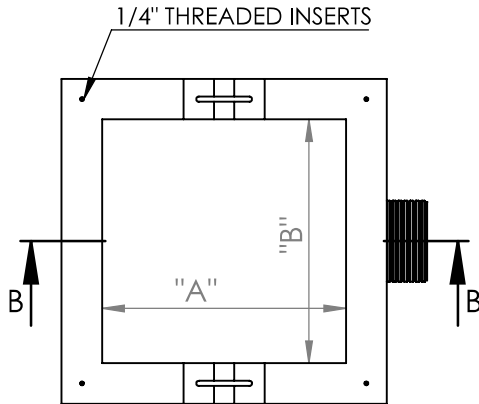
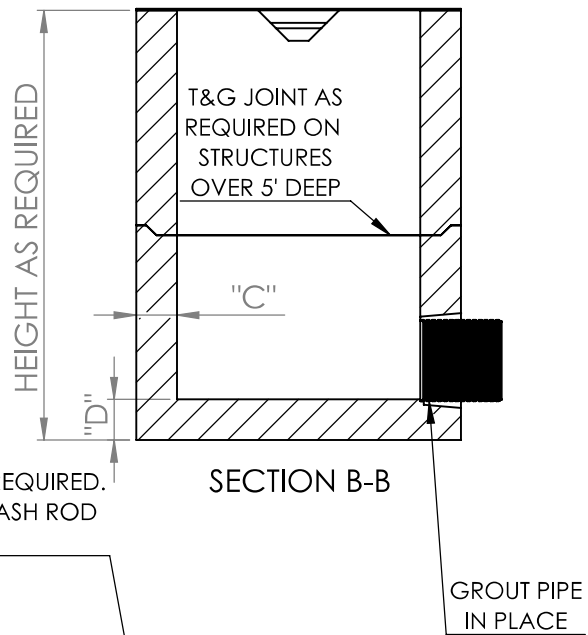


DITCH OPENINGS CAN VARY PER JOB SPECIFICATIONS.



PLAN VIEW



SECTION B-B

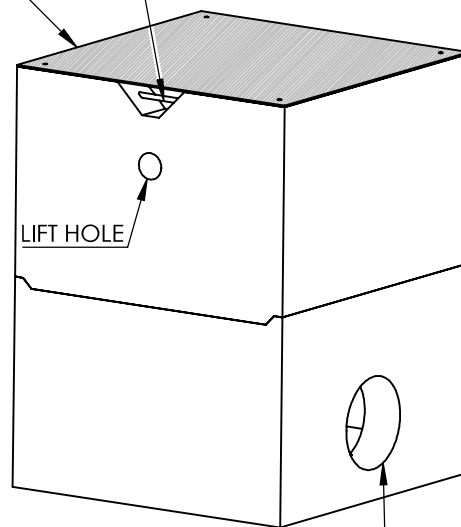
DITCH OPENINGS AS REQUIRED.  
GALVANIZED STEEL TRASH ROD  
(3/4") OPTIONAL.

GALV. STEEL CHECKERPLATE COVER (1/4")

MODEL	A	B	C	D	WEIGHTS	
					WALLS / FT	FL. SLAB
1212	12	12	4	4	267	139
1818	18	18	6	6	600	469
2424-5	24	24	5	6	604	602
2424-6	24	24	6	6	750	675
2436	24	36	6	6	900	900
2436-8	24	36	8	8	1267	1444
3636	36	36	6	6	1050	1200
3636-8	36	36	8	8	1467	1878

NOTES:

- ALL LENGTHS IN INCHES AND WEIGHTS IN POUNDS.
- CONCRETE SHALL TEST 4,000 PSI AT 28 DAYS.
- UNITS ARE FABRICATED TO JOB REQUIREMENTS FOR DEPTH AND PIPE OPENINGS. UNITS MAY BE ORDERED WITH SPECIAL OPENINGS. FLOOR MAY BE DELETED IF DESIRED.
- UNITS ARE REINFORCED WITH 4X4 6-6 WELDED WIRE MESH. SPECIAL REINFORCING MAY BE DELETED IF DESIRED.
- UNITS ARE AVAILABLE WITH BICYCLE PROOF GRATES--TRAFFIC(H-20) OR NON-TRAFFIC DESIGN ALSO AVAILABLE WITH SOLID CHECKERPLATE (TRAFFIC OR NON-TRAFFIC).
- ALL EXPOSED METAL PARTS SHALL BE GALVANIZED IN ACCORDANCE WITH ASTM-A 123 .



ISOMETRIC VIEW

PIPE OPENINGS CAST  
PER PLAN



# STANDARD PRECAST DROP INLETS WITH DITCH OPENINGS