

# Offer

for Andy Chilvers  
of a Mercedes-Benz Arocs 3240 B 8x4/4 Mixer

---



---

This picture can differ from your individual vehicle configuration. It is therefore not binding and might be subject to change!

---

Execution: Truck mixer chassis

Engine Power (kwh): 290

Gross Vehicle Weight: 32000 kg

Steering: right

Vehicle Type: 3240B

---

Cab: S-cab ClassicSpace, 2.30 m,  
tunnel 170 mm

Wheelbase: 5150

Baumuster: 96433022400

---





Mercedes-Benz

# Equipment List

## Paints

Cab & Cab:	MB 9147	arctic white
------------	---------	--------------

## Tyres

1st Axle:	2x 295/80 R 22,5 Bridgestone	V18K26 75 (S+G) Highway cross country
2nd Axle:	2x 295/80 R 22,5 Bridgestone	V18K26 75 (S+G) Highway cross country
3rd Axle:	4x 295/80 R 22,5 Bridgestone	V18K26 75 (S+G) Highway cross country
4th Axle:	4x 295/80 R 22,5 Bridgestone	V18K26 75 (S+G) Highway cross country

## Standard Equipment

A1C	Front axle 7.5 t
A1Y	Front axle, straight version
A2J	Rear axle, crown wheel 390, hypoid, 10.0 t
A5K	Axle ratio i = 3.308 Differential lock, rear axle
B1B	Electronic braking system with ABS and ASR
B1D	Electronic air-processing unit, medium
B1F	Heating, electronic air-processing unit
B1Z	ABS, disengageable
B2A	Disc brakes on front and rear axle
B4A	Condensation monitoring, for compressed air sys.
B4M	Air reservoir, steel Flashing brake lights during emergency braking Parking brake, acoustic warning Compressed air supply connection, front
C0F	Frame overhang 1000 mm
C2Y	Wheelbase 5150 mm
C5K	Mounting parts, for concrete mixer
C6H	Steering, Servotwin
C6J	Power steering pump, uncontrolled
C6Q	Stabiliser, front axle
C6Y	Stabiliser, under frame, rear axle
C7A	Rear underride guard (ECE)
C7J	Battery carrier, batteries side by side
C8F	Wing, for chassis transit Hole matrix on frame, continuous
D0S	Compressed-air connection, in cab
D1B	Driver's suspension seat, standard



Mercedes-Benz

D1N	Fold-up co-driver's seat
D2Y	Seat belt monitor
D3X	Seat cover, flat-weave fabric
D4Y	Sunblind, side, driver's side
D6F	Air conditioning system
D6Z	Construction-site filter
D7R	Stowage flaps, above windscreen
D8A	Roof hatch/vent, roof
	Multifunction steering wheel
	Bottle holder
	Power windows, all-round
	Entrance lamps, in door panel
	Document stowage space, A4 size
DUP0	Duplications Code 0
E1B	Batteries 2 x 12 V/170 Ah, low-maintenance
E1N	Alternator 28 V/100 A
E3L	Socket, 24 V/15 A, co-driver footwell
E3Y	PSM, body and trailer CAN, ISO 11992
E3Z	PSM, body CAN, ISO 11898 instead of 11992
E4A	Communications interface (KOM)
E5A	No. 1 switch, for non-MB body electrics
F0G	Side module, N3G vehicle
F0Y	Mirror cover, construction vehicle
F1A	S-cab ClassicSpace, 2.30 m, tunnel 170 mm
F1P	S-cab
F2B	Floor variant, tunnel 170 mm
F2G	Cab width 2.30 m
F2N	Cab, 600 mm attachment height
F2U	ClassicSpace
F3A	Cab mountings, standard, steel-sprung
F3W	Cab tilting mechanism, mechanical-hydraulic
F4I	Cab rear wall, with window
F5Y	A-pillar trim
F6I	Front mirror, heated
F6Q	Air horn
F7B	Bumper, with steel corners
F7D	Bumper centre section w. towing eyes, coupling jaw
F7Y	Cab entrance, left/right, movable
F8E	Locking system, with central locking
	Cab, reinforced
	Air deflectors, corner panels
	Main mirror heatable and electrically adjustable
	Wide-angle mirror, heated
	Kerb mirror
G0R	Transmission support arms, optimised for removal
G0V	Drive program power
G2B	Transmission G 211-12/14.93-1.0
G5A	Single-disc clutch
G5G	Mercedes PowerShift 3
J1A	Instrument cluster, 10.4 cm



Mercedes-Benz

J1R	Tachograph, digital, EC, rpm, ADR
J1S	Tachograph manufacturer VDO
J1Y	Speedometer, km/h and mph
J2B	CD radio, Bluetooth
J2I	Standard loudspeaker
J9L	Pre-installation for FleetBoard for J3J
	On-Board Diagnosis
	Travel computer
	Display, trailer data, in instrument panel
	FleetBoard Eco Support
	Maintenance system
K0T	Main tank, left
K3T	AdBlue tank, 25 l
K5M	Tanks, lockable
K5Y	Initial filling, additional 30 litres of fuel
K7B	Exhaust syst., outlet downwards, fans out to right
K7T	Exhaust pipe, above wing, second axle
L1B	Daytime driving lamps
	Side marker lights
	Ambient lighting
	LED end-outline marker lamp
M0C	Bottom shell to prevent swirling-up of dust
M0Z	Noise regulation acc. to UN-R 51.03, phase 1
M2Q	Eng. OM470, inline 6, 10.7 l, 290kW (394hp), 1900 Nm
M5A	2. Engine generation OM470
M5M	Engine version Euro VI, with OBD-C
M5U	Exhaust brake, standard system
M6M	Air compressor, 2-stage, for optimised consumption
M7I	Insect screen in front of cooling system
M7J	Guard plate, bumper
M8B	Air intake behind cab, mounted
N6E	Coupling, flexible, for engine PTO (loose)
N7I	Engine takeoff, rear, b, flange 100 mm, 650 Nm
O7A	Powertrain Pack 1
P0W	Cover, for major assemblies
Q1V	Front spring, 2 x 7.5 t, 3-leaf
Q2Q	Rear spring, 2 x 10,0 t, hard
	End cross member, neutral position
R0Z	Wheel-nut cap
R1Q	15-degree tapered rims, 9.00 x 22.5
S5A	Speed limiter, 90 km/h (56 mph), ECE
S5Z	Cruise control
USA2QN	SEPL-Typsteuercode
UTSCNN	SEPL-Typsteuercode
V0T	Vehicle class N3G, off-road vehicle
V0V	Overhang angle, rear, minimum 25 degrees
V0W	Breakover angle, minimum 25 degrees
V0X	Ground clearance under front axle, minimum 250 mm
V0Y	Ground clearance under rear axle, minimum 250 mm
V0Z	Ground clearance between axles, minimum 300 mm



Mercedes-Benz

---

V1B	Arocs
V1W	Standard
V2I	Arocs model generation 1
V8A	Chassis number FIN
W5A	Weight variant 32.0 t (7.1/7.1/9.5/9.5)
X1A	Instrument/labels/documentation, English
X2E	Model plate, EU
X3Z	Powertrain warranty as per T and Cs 3yrs/250,000km
Y4R	Inflation aid, for steep-shoulder rims
Y4Z	Compressed-air gun, with hose
Z4O	Tank cross-section, narrow
Z4Q	Tank cross-section, low
Z5D	OM 470
Z5W	Right-hand drive
Z5Z	Vehicle, for left-side traffic

---

## Selected Optional Equipment

---

F6A	Windscreen, non-tinted
F8B	2 remote control keys
F8F	Extended central locking
F9FC5O	Deletion Rain/light sensor
K1C	Tank, 290 l, left, 650 x 565 x 950 mm, aluminium
L1Q	Tail lights, construc. in metal holder with grille
L9A	Pre-installation for rotating beacons
L9AC3O	Deletion LED tail lights

---

## Dealer Supplied Equipment and Services

---

adc

---

pdi

---



Mercedes-Benz



## Mercedes-Benz Customer Service

With 90 service points located across the UK, the Mercedes-Benz Dealer network ensures that our After Sales support is there when you need us. Day and night, we offer round the clock support to keep your business moving.

Long established franchises with sustained multi-million pound investment have created a network of unrivalled efficiency and responsiveness, ready to meet the demands of every Mercedes-Benz commercial vehicle customer.

First class facilities, high tech systems and motivated staff with extensive, continuous training combine to enable our Dealer network to deliver an After Sales support package that's truly second to none.

## Uptime Commitment

So that every Mercedes-Benz operator can be confident they'll receive the same consistent high levels of service, wherever or whenever they need it, all Mercedes-Benz Authorised Repairers are targeted and measured in key areas.

- MOT 1<sup>st</sup> time pass rate to protect your Operator Licence.
- How long it takes to attend, should you experience a breakdown.
- How many vehicles we fix at roadside without the need to return to a workshop.

You can expect to receive the following level of service:

	<b>Mercedes-Benz Network Average</b>
<b>1st time MOT pass rate</b>	<b>95.19%</b>
<b>Average Service 24h roadside response time</b>	<b>56m 50s</b>
<b>Fixed at roadside</b>	<b>87.7%</b>

## Reassuring Warranties

Atego, New Actros (7,7 litre), Antos (7.7litre), Arocs (7.7litre), double drive New Actros, Antos and Arocs

- One year warranty on complete vehicle
- Further two years driveline cover up to 250,000kms

New Actros, Antos and Arocs (10.7, 12.8 & 15.6 litre), 4x2 and 6x2 models

- One year warranty on complete vehicle
- Further two years driveline cover up to 450,000kms

Econic

- Three years on the complete vehicle, up to 161,000kms

Inclusive Integrated Service Packages

When purchasing a new tractor unit from the New Actros, Antos or Arocs ranges, up to 44t GCW, your vehicle will be supplied as standard with a 2 year, Mercedes-Benz R&M contract.

(To qualify, vehicles must be sourced from an authorised UK Dealer, full contract details available on request).

Parts Warranty

12 months unlimited mileage on all parts and major assemblies.

PowerGuard

PowerGuard, available optionally, is Mercedes-Benz own mechanical breakdown insurance. Offered in three levels, PowerGuard covers the truck's driveline and key ancillary components up to five years.



Mercedes-Benz

## FleetBoard

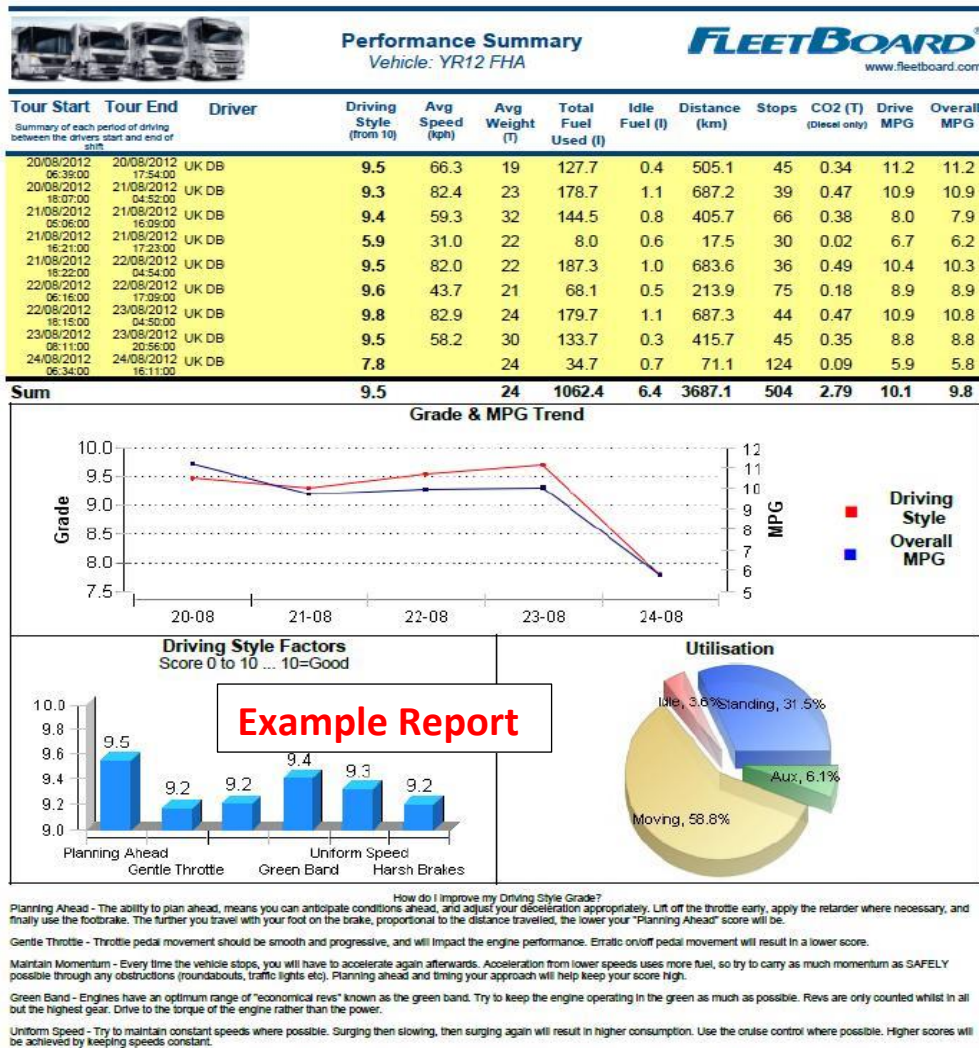
Mercedes-Benz own telematics solution, helping you drive down operating costs while improving your customer service.

In challenging times avoid being left behind by the competition. FleetBoard assists you across your entire fleet in optimising your transport chain, reducing your fuel costs and fulfilling the legal requirements with respect to driver working hours.

Reliable market-leading standard devices and telematics-supported Internet services.

State-of-the art technology, future-proof solutions as well as modular design services and equipment.

- Driver and vehicle performance grading
- MPG reporting by driver and vehicle
- Digital tachograph data and download driver's card
- Street level internet mapping and vehicle tracking
- Online fridge temperature data
- Online tracking, POD signature capture and barcode scanning
- Available for all vehicle makes.



FleetBoard performance reporting is subject to subscription  
Further details are available from: [www.fleetboard.co.uk](http://www.fleetboard.co.uk)





## Mercedes-Benz Electronic Inspection System

<p>The Mercedes-Benz Electronic Inspection System is a simple to use, online system to help you manage your trucks' maintenance and inspection schedules.</p> <p>With all your important documentation recorded via a hand-held PDA and then uploaded onto the secure system, it eliminates the need for paperwork, data entry, record keeping and document retrieval. The system is simple to use and never loses or misplaces a document.</p>	<p>VOSA Approved</p> <p>Reduces admin and paperwork</p> <p>Assess all records, at any time</p> <p>Secure data storage</p> <p>Reduced vehicle downtime</p>
---	---

## Driver Training

<p>Driver CPC training for all professional LGV drivers Driver Certificate of Professional Competence (CPC) has become a legal requirement for everyone operating an LGV over 3.5t. Drivers must undertake 35 hours training every five years to meet the CPC requirements.</p> <p>Training must be approved and Mercedes-Benz is proud to offer these courses through our extensive training network, across the UK.</p>	<p>Over 30 years we have helped more than 20,000 drivers improve their professional driving skills.</p> <p>High quality CPC approved courses developed utilising our own experience, supported by industry organisations such as Skills for Logistics and JAUPT.</p> <p>Mixed classroom and in-cab training provides an enjoyable learning experience, taking participating drivers to a level far beyond that required to qualify.</p>
---	---

Further details are available from: [www.mercedes-benzdrivertraining.co.uk](http://www.mercedes-benzdrivertraining.co.uk)

## Service Contracts

Less truly is more with our new Truck Service Contracts. You can now get more expertise, peace of mind and control for less money: essential for the current financial climate.

A Mercedes-Benz Service Contract will help to ensure that throughout its life, your truck is maintained to the highest standards, by qualified technicians, using Mercedes-Benz Genuine Parts.

Not only ensure that your truck is kept running at its optimum performance, it also makes it easier for you to manage your finances and avoid unexpected bills. After all, the fewer surprises your business has, the more competitive it can be.

<p><b>Less cost</b> Fixed rates avoid unexpected, expensive bills and protect you from inflation for the duration of your contract.</p> <p><b>Less worry</b> Know that your truck will be maintained to the highest standard, by qualified technicians, using Mercedes-Benz Genuine Parts</p> <p><b>Less Hassle</b></p>	<p><b>More expertise</b> No-one knows your truck as well as, or provides better technical advice, than our fully trained Mercedes-Benz technicians.</p> <p><b>More peace of mind</b> Knowing what's around the corner makes it easier to manage your business. And for the unexpected, you can always rely on our Service 24h roadside assistance.</p>
---	--



Mercedes-Benz

Servicing, repairs and maintenance all scheduled at a time to suit you - so your truck is on the road for longer and you get on with running your business.

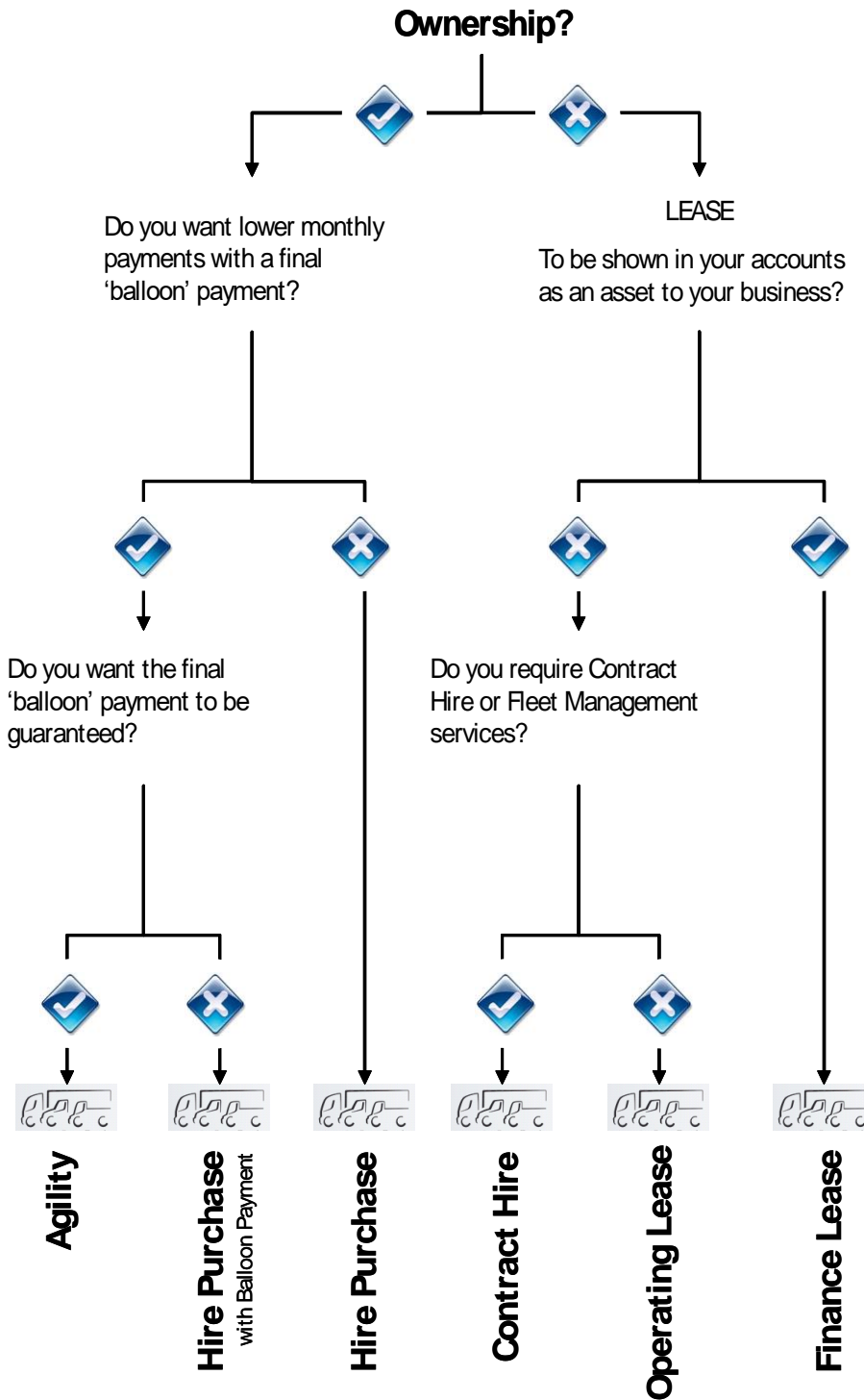
More control

Tailored packages based on mileage or time, with fixed monthly payments, put you in complete control.



## Acquiring your Mercedes-Benz vehicle

Mercedes-Benz CharterWay offers a comprehensive portfolio of services to LGV and LCV operators throughout the UK. The finance options guide, below, is designed to help you review and choose the most appropriate method of acquisition for your organisation.



## Our Vehicle Range

Mercedes-Benz produce a comprehensive range of class leading trucks, capable of meeting the operational requirements of every operator, supported by an extensive UK Dealer network.

### Canter

3.5t > 8.55t Rigid



Designed as a specialist light truck  
Three person Comfort and six/seven person Crew cabs  
Euro VI emission standard engines over 3.5t GVW, with Euro 5b+ light duty as standard at 3.5t  
Exceptional body/payload allowance at 7.5t and above  
Optional Duonic automated manual transmission  
4x4 and EcoHybrid variants available

### Atego

7.5t > 16t Rigid  
13t Tractor



2.3m wide day, extended day, sleeper and high roof sleeper cabs  
Euro VI compliant engines options from 156 to 299 bhp offering improved fuel economy over Euro V  
Automated PowerShift 3 gearbox as standard  
Wheelbases from 3020 to 6260mm  
Bespoke chassis available for specialist applications

### Arocs

18t > 48t Rigid  
40t > 44t Tractor



An all new truck range with increased ground clearance and flexible chassis for on/off road use, with specialist chassis for the construction sector  
Choice of 2.3m day, extended day and sleeper cabs or 2.5m wide sleeper cabs, available with choice of height, floor configuration and roof profile  
Automated PowerShift 3 gearbox as standard  
Euro VI engines with exceptional fuel economy, available from 238 bhp to 625 bhp

### Antos

18t > 26t Rigid  
18t > 44t Tractor



Our new heavy duty truck optimised for the distribution sector  
2.3m wide day and extended day cabs, with a choice of cab shape, floor heights and roof profiles  
Highly fuel efficient design with choice of straight six engines to meet EuroVI requirements and Mercedes PowerShift 3 as standard

### New Actros

18t > 26t Rigid  
18t > 44t Tractor



Our new heavy duty truck range designed for maximum performance in long distance transport  
Choice of 2.3 and 2.5m wide sleeper cabs, with wide choice of height, floor and roof profiles  
Highly fuel efficient design with choice of straight six engines from 238 bhp to 625 bhp, meeting EuroVI emission standards  
Mercedes Powershift 3 automatic gearbox as standard

### Econic

18t > 26t Rigid



Purpose-designed Euro VI compliant RCV chassis  
Initially available with 299 bhp and 354 bhp engines and 4x2 or 6x2 rear steer chassis  
Spacious, state of the art, low entry cab  
Allison automatic gearbox as standard  
Additional chassis variants available during 2014



Unless otherwise agreed in writing by the Company these conditions shall apply to all orders placed with and/or accepted by the Company for all goods and services supplied by the Company.

## 2. Validity

Unless otherwise stated, and so long as the customer is not notified of withdrawal or variation, any quotation made by the Company shall remain open for a period of twentydays from the date appearing thereon, whereupon it shall forthwith lapse. The Company also reserves the right to alter prices and specifications without notice, and the prices charged will be those current at the date of delivery of the goods or performance of the services (as applicable).

## 3. Acceptance

Any quotation, whether written or oral, submitted by the Company shall be deemed to be an invitation to treat and not an offer. The placing by the customer of any order whether written or oral and whether or not any quotation may have been submitted by the Company, shall constitute an offer by the customer, and no contract shall be taken to have come into existence unless and until the Company shall have accepted the customers order in writing. Any order placed by the Customer with any of the Companys salesmen or other representatives shall be subject to written acceptance as aforesaid.

## 4. Delivery

Delivery of goods shall be at the Companys premises specified overleaf. The customer will be notified in writing by the Company when goods are available for delivery and risk in the goods shall pass to the customer on delivery or seven days after the service of such notice, whichever shall be the earlier and whether or not property in the goods has passed.

## 5. Delivery Date

The Company shall make every reasonable endeavour to execute each order within the period quoted, subject to any variation to the contract agreed in writing between the parties or otherwise as varied in accordance with these conditions, but time shall not be the essence of the contract.

## 6. Transfer of property and insurance risk

Property in the goods shall not pass until payment has been made in full. Until payment in full, if the Company releases the goods to the customer with licence to use the goods, the customer shall hold and store the goods at his own expense on behalf of the Company, and the said licence may be revoked expressly by notice (written or verbal and if verbal confirmed in writing) given at any time by the Company to the customer and shall be revoked automatically in the event of the insolvency (as mentioned in condition 14) of the customer. Until payment in full, the Company shall have a general lien on all property and any proceeds of the general sale of the goods of the customer in the possession of the Company. Insurance risk in respect of vehicles belonging to the customer or any third party and in the possession or under the control of the Company shall rest at all times with the customer alone and in respect of goods sold hereunder shall pass to the customer upon delivery, and the customer is advised to insure accordingly.

## 7. Payment

### Vehicles

Payment in full is due not later than the time of delivery. If financing arrangements have been made by the customer or have been organised by the Company on behalf of a customer in respect of the purchase of a vehicle, payment in full and cleared funds will be required by the Company prior to any vehicle being made available for delivery.

### Parts and Services

Where a credit account approved by the Company is open and operating in accordance with the terms of the letter notifying the customer that a credit account has been opened, payment is due by the end of the month following the month of supply of the goods or services. Otherwise, payment shall be due within twenty-one days following the date of the Companys invoice and the goods shall be removed at the time of payment.

(b)The Company shall be entitled to charge interest from day to day on any balance due and remaining unpaid in accordance with the Late Payment of Commercial Debts (Interest) Act 1998 as such legislation has been supplemented, amended and implemented from time to time (as well after any judgement as before).

(c)The Company shall be entitled, if payment is not made in accordance with the terms of this condition, to exercise its lien as bailee by selling any goods held by it and whether or not belonging to the customer, without notice and to withhold from the proceeds all sums due to it hereunder.

## 8. Storage Charges

The Company shall be entitled to make a storage charge on a daily basis in respect of any goods of the customer remaining on its premises for whatever reason (including without limitation as the result of failure by the customer to make payment to the Company hereunder):

- 8.1 at the expiry of a period of twenty-one days after goods are left with it for quotation purposes; or
- 8.2 at the expiry of the twenty-one day period referred to in condition 7;  
whichever is the earlier and in either case with effect from the beginning of the period of twenty-one days referred to.

## 9. Creditworthiness

The Company reserves the right on giving to the customer written notice of its intention to do so, to withhold performance of all or any of its obligations under the contract if in its absolute discretion it considers the customers credit status to be unsatisfactory.

## 10. Improvements and Alterations

The Company whose policy is one of continuous improvement, reserves the right to make any change without notice in material, dimensions and designs which, having regard to all the circumstances it thinks reasonable or desirable, without materially varying the terms of the contract.

## 11. Illustrations and Descriptions

Illustrations and descriptions, except as otherwise agreed in writing, are intended as a general guide only and shall not form the basis of a sale by description.

## 12. Modifications

- 12.1 Any modifications made to vehicles shall be carried out in accordance with Mercedes Benz Body/Equipment Mounting Directives ("Directives") from time to time.
- 12.2 Any third party undertaking modifications to vehicles shall, prior to any such modifications, supply to the Company a detailed specification of the proposed modifications including a complete list of components to be used together with all documentation, conditions and contractual information relating to the proposed modifications. The customer warrants to the Company that any modifications to vehicles (whether carried out by itself or any third party) shall be in accordance with the Directives.
- 12.3 The Company shall not be liable for any loss, expense, cost (howsoever incurred), liability, damage or claim arising out of or as a result of or in relation to modifications carried out by the customer and/or any third party not in accordance with the Directives irrespective of whether the vehicle is purchased from the Company or from a third party including but, for the avoidance of doubt, not limited to:
  - (a) faulty design, production or installation of the body or individual parts used in the manufacture of the body;
  - (b) the safety and roadworthiness of the body;
  - (c) the safety and roadworthiness of parts and components not listed in the specifications supplied to the Company as set out in clause 12.2 above;
  - (d) operational reliability and roadworthiness of the vehicle following the modifications;
  - (e) effect of modifications on the vehicle when such modifications were not indicated in the specifications supplied;
  - (f) subsequent damage resulting from the modification, or
  - (g) the function, reliability and freedom of movement of all moving parts of the goods.
- 12.4 The customer shall be responsible for all modifications and installed parts whether or not contained in or indicated insufficiently in the detailed specifications supplied.
- 12.5 The customer shall be responsible for the modifications complying with applicable laws and directives and with labour protection and accident prevention regulations, safety regulations from time to time (including any amendments to such laws, directive and regulations) and bulletins issued by accident insurance carriers and all technical possibilities for avoiding unsafe operating conditions must be utilised.

## 13. Third Parties

- 13.1 The customer shall warrant to the Company that it shall provide to the Company all documentation and information set out in clause 12.2 above prior to carrying out any modifications.
- 13.2 The customer shall indemnify and keep indemnified in full the Company against any and all loss, expense, cost (howsoever incurred including legal costs), liability, damage or claim arising out of or as a result of or in relation to modifications carried out by a third party.
- 13.3 The Companys pre-delivery checks shall be limited to the chassis and those parts produced by the Company but shall not extend to any modifications carried out by any third party.

## 14. Default of Customer

Without prejudice to clause 6 above, if the customer becomes bankrupt or insolvent (including without limitation compounding or making any arrangement with his creditors or being a company going into liquidation or having a receiver or manager or administrator appointed of the whole or any part of its undertaking and assets) the contract shall forthwith automatically terminate without any requirement as to notice, and the Company shall be entitled to sell or resell the goods, any loss sustained on the sale or re-sale being the account of the customer.



## 15. Liability of Company

Subject to clause 12 above, the liability of the Company hereunder shall be limited as hereinafter mentioned.

### 15.1 Sales of second-hand goods to non-consumers

The customer, having been given reasonable opportunity to inspect and test the goods, shall take them in their state and condition existing upon delivery, and accordingly all conditions, representations and warranties, express and implied, statutory or otherwise, as to the satisfactory quality and fitness for purpose are hereby expressly excluded save only insofar as may be specifically acknowledged by the Company in writing.

### 15.2 Sales of new goods to non-consumers

The Company warrants all new goods except any modifications detailed in clause 12 above to be free from defects in materials and workmanship appearing within the period stated with regard to the goods in question in the manufacturers warranty contained in the dealers handbook and otherwise upon and subject to the terms and conditions therein set out. A copy of this warranty as currently in force may be inspected upon request and a summary of some of its terms and conditions appears in the warranty section of the owners handbook.

### 15.3 Supply of service to consumers and non-consumers

- (a) These conditions shall not in any way affect the customers statutory rights.
- (b) The Company shall, notwithstanding anything contained or implied in these conditions to the contrary, have no liability for any consequential loss whatsoever and howsoever caused and arising directly or indirectly out of the supply of any goods and/or services hereunder except only insofar as the same may result directly out of any negligence of the Company, and in particular but without limitation the Company shall have no liability for any property, whether of the customer or any third party, left in or about any vehicle in its possession or under its control.
- (c) Except only as hereinbefore expressly mentioned, all and any representations, conditions and warranties, express or implied, statutory or otherwise save only those relating to services mentioned in the Supply of Goods and Services Act 1982, are hereby expressly excluded.
- (d) In this condition, the terms "consumer" and "non-consumer" shall be construed in accordance with section 12 of the Unfair Contract Terms Act 1977.

## 16. Competition

In the event that any vehicle supplied hereunder is used by any person for any competitive trial or race without the prior written consent of the Company:

16.1 The customers rights under condition 15 above shall forthwith automatically cease except only to the extent from time to time prohibited by law; and

16.2 The customer shall indemnify and keep indemnified in full the Company against all and any loss, expense, cost (howsoever incurred including legal costs), liability, damage or claim arising out of such use of the vehicle.

## 17. Whole Agreement

These conditions and the terms herein contained or referred to are the whole agreement between the parties.

## 18. Disputes and Set-off

Any liability of the Company hereunder shall be subject to and conditional upon the due performance and observance by the customer of all its obligations hereunder and the customer shall not be entitled to withhold or delay payment or exercise any right to set-off whatsoever and howsoever arising or arisen which might otherwise be available to it.

## 19. Force Majeure

The Company shall have no liability whatsoever for any failure to perform, or for any delay in the performance of any of its obligations hereunder arising wholly or in part by reason of any factor beyond its direct control, including without limitation shortage or raw materials, components or services, act of God, war, national emergency, laws or regulations of any country, industrial dispute, civil commotion, fire, tempest and/or flood.

## 20. Waiver

No failure or delay on the part of the Company to exercise any of its rights hereunder shall operate as a waiver thereof, nor shall any single or partial exercise of any such right preclude any other or further exercise thereof. Any waiver by the Company of any breach by the customer of any of its obligations hereunder shall not affect the rights of the Company in the event of any further or additional breach or breaches.

## 21. Authority to drive vehicles

In connection with any inspection, repair or contemplated repair, testing, taking the vehicle to the coachbuilders or other specialists, demonstrations and/or other purposes for which the Company may take possession of a vehicle hereunder, the customer is deemed, unless express notice in writing is given to the contrary at the time the Company takes possession of the vehicle or earlier to have authorised the driving of the vehicle on the road or elsewhere.

## 22. Authority of employees of Company

Employees of the Company are not in any circumstances authorised to take any deposit or other sum, whether cash or otherwise, otherwise than against a formal receipt of the Company.

## 23. Meaning of "vehicle"

Save where the context forbids, the expression "vehicle" wherever used in these conditions means and includes car, lorry, van, trailer, caravan, invalid carriage and cycle, and as a separate unit or otherwise, engine, axle, gearbox, clutch, generator, starter, battery and each and every component of a vehicle.

## 24. Amendment

No alteration or qualification of these printed conditions shall be effective unless in writing, signed on behalf of the Company by a director or other duly authorised officer of the Company. No other person has any authority to alter or qualify in any way these conditions or to enter any contract for any purpose otherwise than on such conditions.

## 25. Manufacturers Schedule

Unless otherwise stated in writing, all service work undertaken is carried out in accordance with the manufacturers schedule.

## 26. Arbitration

If the parties are unable to agree a mutually satisfactory resolution to any dispute or difference as to the meaning or effect of these conditions or of the Companys guarantee or as to the rights or liabilities of either party under the contract within 28 days of such dispute or difference arising then either party shall have the right to refer the dispute or difference to a single arbitrator in England to be nominated by the parties, or in default of agreement, by the President of the Society of Motor Manufacturers and Traders Limited or, in default of appointment by him, by the President of the Law Society, whose decision shall be final and binding and whose costs shall be borne by the parties as he may direct. This clause shall be deemed to be a submission to arbitration in accordance with the Arbitration Act 1990.

## 27. Assignment

This contract shall be personal to the customer and no rights arising in contract hereunder shall be assignable by the customer without the express prior written consent of the Company.

## 28. Notices

Any notice given hereunder shall be deemed properly given if sent by ordinary post to the address of the party for whom it is intended stated overleaf shall be deemed to have been received forty-eight hours after posting.

## 29. Clause Headings

The clause headings in these conditions are for convenience only and shall in any way affect the interpretation of the Contract.

## 30. Governing Law and Jurisdiction

These conditions shall in all respects be governed by and construed in accordance with English Law and the parties agree to submit to the non-exclusive jurisdiction of the English courts.

## 31. Third Party Rights

None of these conditions shall be enforceable by any person who is not a party to it. The rights of any third party to enforce these conditions may be varied and/or extinguished by agreement between the parties without the consent of any third party.

## 32.

Although the Company will assist the Purchaser in obtaining the services of a signwriter to be specified by the customer and will act as an intermediary for the payment of the requisite fee any contract for such work shall be the sole responsibilities of the respective customer and signwriter concerned, the signwriter not to be deemed a sub-contractor to the Company.



Mercedes-Benz



Andy Chilvers  
ADC Trucks

.  
. .  
.

This proposal is not binding.

The prices indicated refer to valid prices for the anticipated production period and may be subject to change.

The manufacturer reserves the right to make changes to the design, form, colour and specification during the delivery period, provided that these changes, taking into account the interests of the vendor, can be deemed reasonable with respect to the purchaser. Where the vendor or the manufacturer uses symbols or numbers to describe an order or the subject of an order, no rights may be derived solely from these. Illustrations may show accessories and items of special equipment which are not part of the standard configuration, or the proposed vehicle.

Colours may differ slightly from those shown in this document. Unless stated otherwise, all dimensions and weights refer to standard specification.

All calculations are made with the utmost care, but no responsibility can be accepted for any loss or damage (direct or consequential) arising from the output data.

E&OE.





Mercedes-Benz

# Technical data

## Dimensions and weights

Type	
Execution	B
Drivetrain	8X4/4
Wheelbase	5150 mm

Body length	
With max. frame overhang	0 mm
Min. centre of gravity – last axle	0 mm
Max. centre of gravity – last axle	0 mm

Weights	
1. Front axle (empty)	3245 kg
2. Front axle (empty)	3558 kg
1. Rear axle (empty)	1513 kg
2. Rear axle (empty)	1513 kg
kerb weight (incl. SA)	9829 kg
Payload	22171 kg
Gross vehicle weight	32000 kg

Gearbox	
G2B	
Short text	Transmission G 211-12/14.93-1.0

Gross combination weight	Trailer operation not permitted for this vehicle. kg
--------------------------	--

Dimensions	
Frame height – FA – laden	1048 mm
Frame height – FA – unladen	1139 mm
Frame height – RA – laden	1044 mm
Frame height – RA – unladen	1098 mm

Engine	M2Q
Displacement cm <sup>3</sup>	10677
Engine output kW / HP	290 / 394
Power/engine torque in NM at 1100 rpm	1900

Tyres	
1st Axle:	2x 295/80 R 22,5
2nd Axle:	2x 295/80 R 22,5
3rd Axle:	4x 295/80 R 22,5
4th Axle:	4x 295/80 R 22,5

Kerb weights with driver, Tools, Underride protection (front/rear), spare wheel, 90% of tankful



Mercedes-Benz

# Technical Data

Technical illustration

