



2024
PRODUCT CATALOGUE



GLASS DOOR HANDLES & KNOBS



TECHNOLOGY

We implement latest technology in process with modern machinery to deliver best products with enhanced performance. Over goal is to motivated us to accept challenges and come as widest range hardware manufacturer.

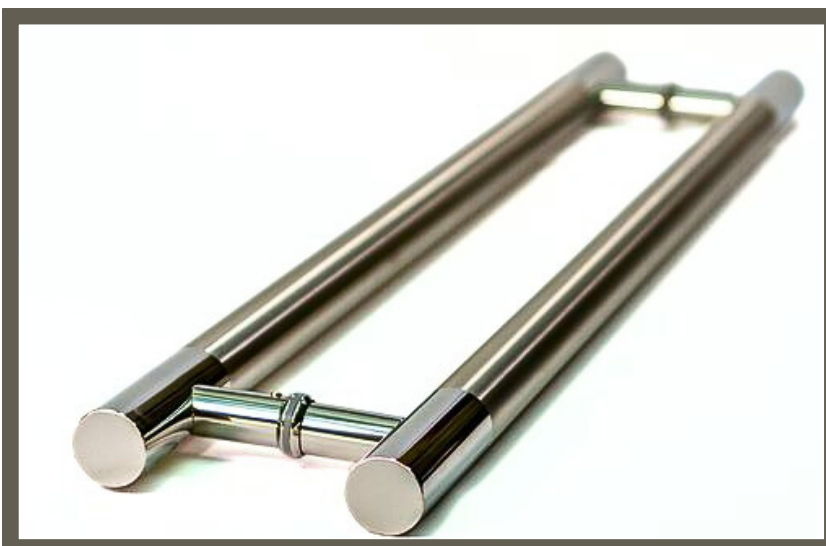
MANUFACTURING

We have workers who have more than a decade of experience on various machines that's why we achieved total quality standards.



WHY US?

Here are some of the aspects that have helped us in keeping our selves ahead of our competitors and preferred business associates of our clients.



EXPERIENCED & RELIABLE

We, Accufit Hardware | MJK Exports are in business of custom manufacturing architectural and furniture hardware since 1994, our vast technical experience and in-house modern factory floor has all the required expertise and resources to produce your custom branded metal hardware both in medium and large volumes, be it CNC machined, deep draw sheet metal, or tubular bent parts.

OUR ENGINEERING

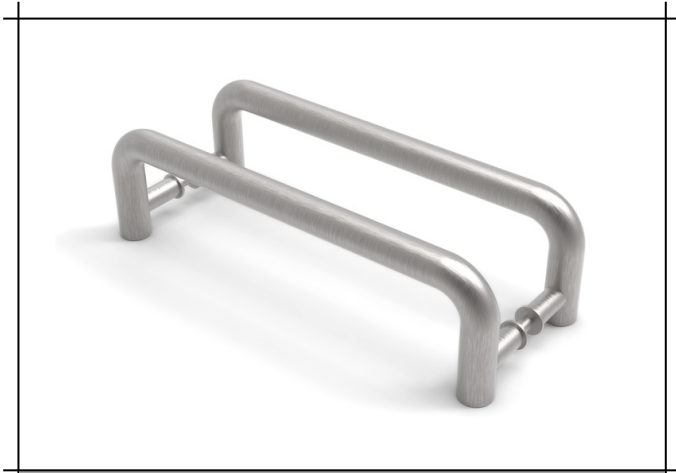
Equipped with solid works , 3D printers, state of the art CNC Machine shop, press shop, polishing and electroplating, we are full service provider for any of your hardware manufacturing needs.

CUSTOMER SATISFACTION

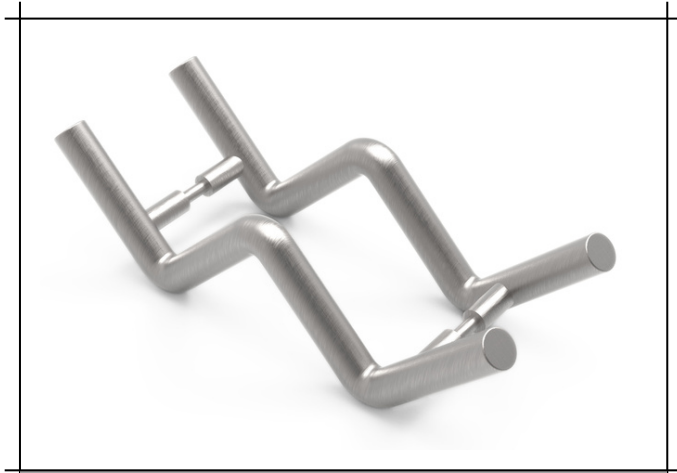
Accufit Hardware | MJK Exports will be honest and responsible in our dealing with customers, suppliers and employees.

We'll provide products and services that meets or exceed the expectations of our customers, while relentlessly pursuing continuous improvements and innovation in everything we do to create a significant competitive advantage compared to our competitors.

ABOUT ACCUFIT HARDWARE



MJK-2975



MJK-2979



MJK-2978



MJK-2976



MJK-2977

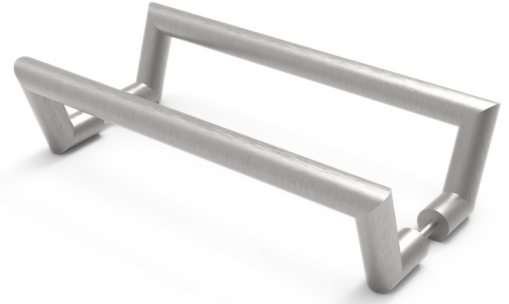


MJK-2983

Dia ϕ	ϕ 19 mm	ϕ 22 mm	ϕ 25 mm	ϕ 32 mm
Length (mm)	150 / 200 / 250 / 300	200 / 250 / 300 / 350 / 450 / 450	300 / 350 / 400 / 450 / 500 / 550 / 600	300 / 350 / 400 / 450 / 500 / 550 / 600 / 900 / 1200 / 2400
Finish	Polished S.S	Satin Nickel	Matt Black	Antique Brass
Material Grade	Stainless Steel 202 / Stainless Steel 304 / Stainless Steel 316 / Wall thickness 1.50 mm			



MJK-2987



MJK-2963



MJK-2960



MJK-2955



MJK-2959



MJK-2948

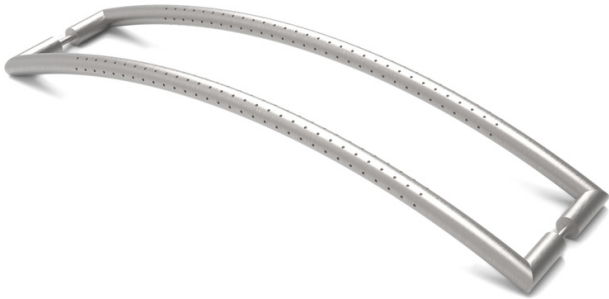
Dia ϕ	ϕ 19 mm	ϕ 22 mm	ϕ 25 mm	ϕ 32 mm
Length (mm)	150 / 200 / 250 / 300	200 / 250 / 300 / 350 / 450 / 450	300 / 350 / 400 / 450 / 500 / 550 / 600	300 / 350 / 400 / 450 / 500 / 550 / 600 / 900 / 1200 / 2400
Finish	Polished S.S	Satin Nickel	Matt Black	Antique Brass
Material Grade	Stainless Steel 202 / Stainless Steel 304 / Stainless Steel 316 / Wall thickness 1.50 mm			



MJK-2957



MJK-2941



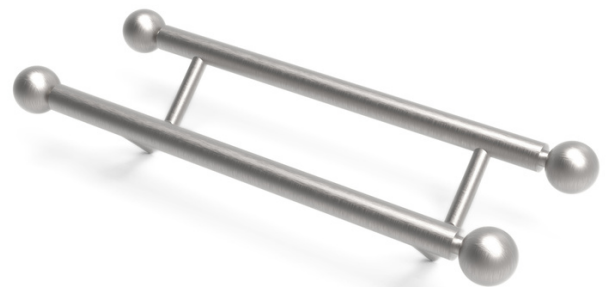
MJK-2943



MJK-2942



MJK-2952



MJK-2954

Dia ϕ	ϕ 19 mm	ϕ 22 mm	ϕ 25 mm	ϕ 32 mm
Length (mm)	150 / 200 / 250 / 300	200 / 250 / 300 / 350 / 450 / 450	300 / 350 / 400 / 450 / 500 / 550 / 600	300 / 350 / 400 / 450 / 500 / 550 / 600 / 900 / 1200 / 2400
Finish	Polished S.S	Satin Nickel	Matt Black	Antique Brass
Material Grade	Stainless Steel 202 / Stainless Steel 304 / Stainless Steel 316 / Wall thickness 1.50 mm			



MJK-2937



MJK-2950



MJK-2946



MJK-2969



MJK-2986

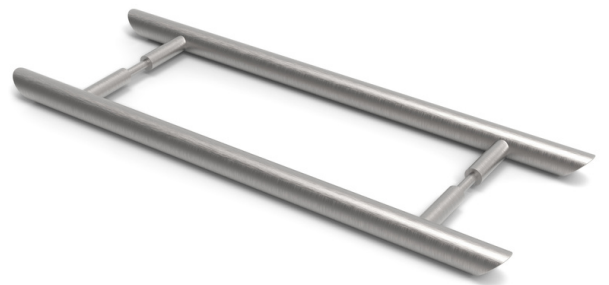


MJK-2961

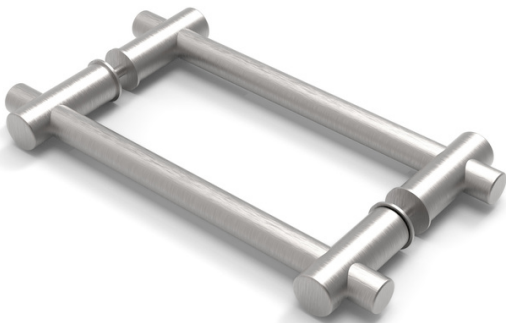
Dia ϕ	ϕ 19 mm	ϕ 22 mm	ϕ 25 mm	ϕ 32 mm
Length (mm)	150 / 200 / 250 / 300	200 / 250 / 300 / 350 / 450 / 450	300 / 350 / 400 / 450 / 500 / 550 / 600	300 / 350 / 400 / 450 / 500 / 550 / 600 / 900 / 1200 / 2400
Finish	Polished S.S	Satin Nickel	Matt Black	Antique Brass
Material Grade	Stainless Steel 202 / Stainless Steel 304 / Stainless Steel 316 / Wall thickness 1.50 mm			



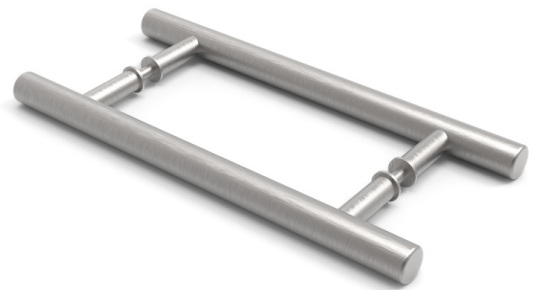
MJK-2985



MJK-2953



MJK-2973



MJK-2974



MJK-2965



MJK-2980

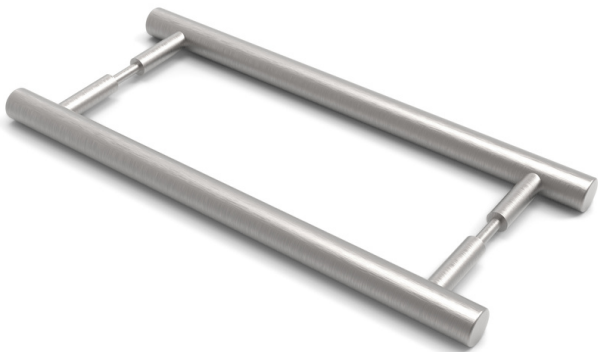
Dia ϕ	ϕ 19 mm	ϕ 22 mm	ϕ 25 mm	ϕ 32 mm
Length (mm)	150 / 200 / 250 / 300	200 / 250 / 300 / 350 / 450 / 450	300 / 350 / 400 / 450 / 500 / 550 / 600	300 / 350 / 400 / 450 / 500 / 550 / 600 / 900 / 1200 / 2400
Finish	Polished S.S	Satin Nickel	Matt Black	Antique Brass
Material Grade	Stainless Steel 202 / Stainless Steel 304 / Stainless Steel 316 / Wall thickness 1.50 mm			



MJK-2949



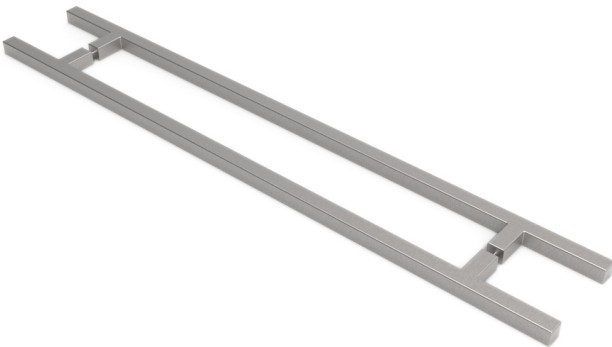
MJK-2944



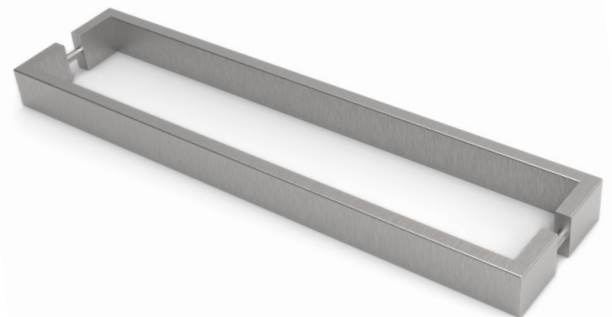
MJK-2939



MJK-2958

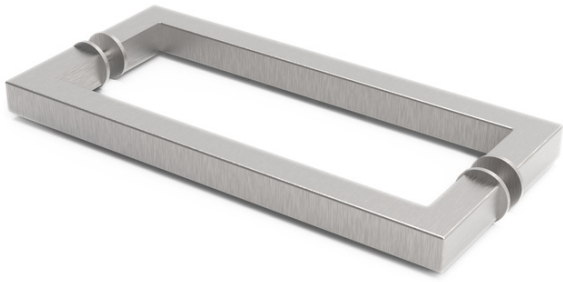


MJK-2933



MJK-2934

Dia ϕ	ϕ 19 mm	ϕ 22 mm	ϕ 25 mm	ϕ 32 mm
Length (mm)	150 / 200 / 250 / 300	200 / 250 / 300 / 350 / 450 / 450	300 / 350 / 400 / 450 / 500 / 550 / 600	300 / 350 / 400 / 450 / 500 / 550 / 600 / 900 / 1200 / 2400
Finish	Polished S.S	Satin Nickel	Matt Black	Antique Brass
Material Grade	Stainless Steel 202 / Stainless Steel 304 / Stainless Steel 316 / Wall thickness 1.50 mm			



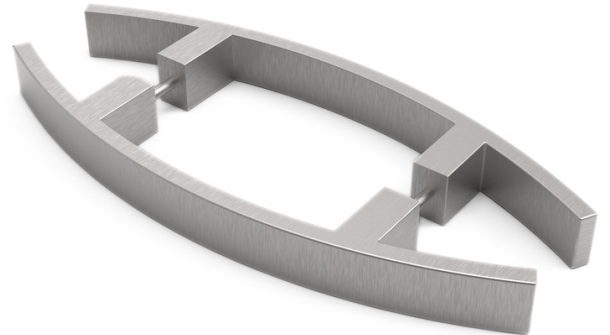
MJK-2984



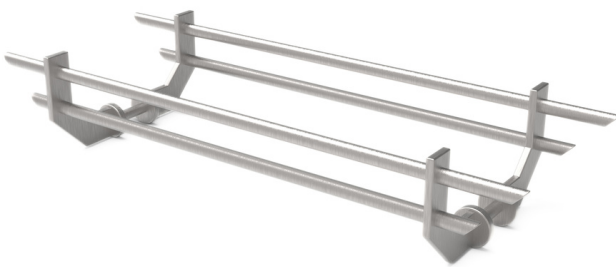
MJK-2981



MJK-2982



MJK-2936



MJK-2964



MJK-2967

Dia	19 mm	22 mm	25 mm	32 mm
Length (mm)	150 / 200 / 250 / 300	200 / 250 / 300 / 350 / 450 / 450	300 / 350 / 400 / 450 / 500 / 550 / 600	300 / 350 / 400 / 450 / 500 / 550 / 600 / 900 / 1200 / 2400
Finish	Polished S.S	Satin Nickel	Matt Black	Antique Brass
Material Grade	Stainless Steel 202 / Stainless Steel 304 / Stainless Steel 316 / Wall thickness 1.50 mm			



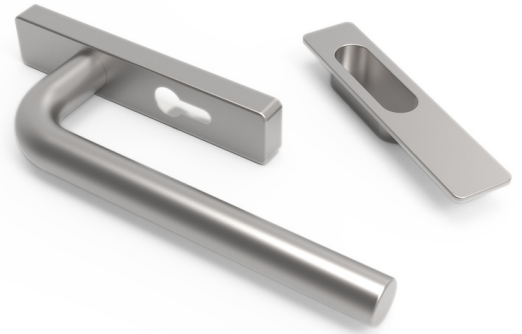
MJK-2998



MJK-2997



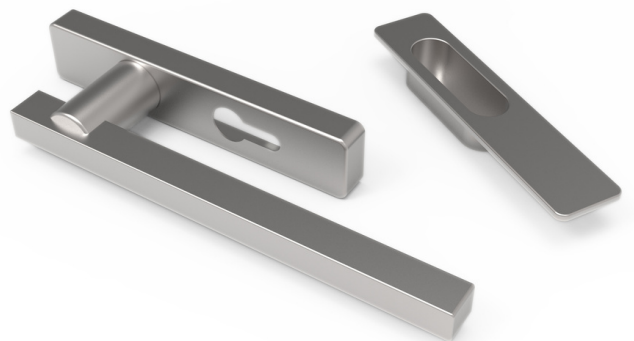
MJK-2996



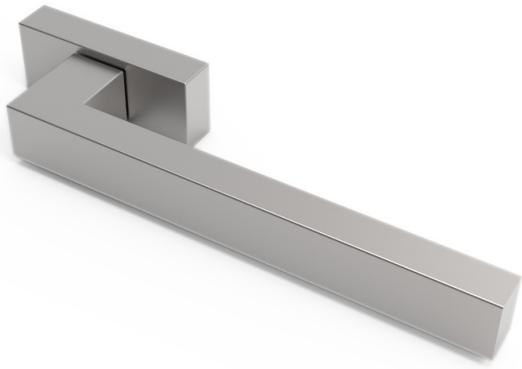
MJK-2994



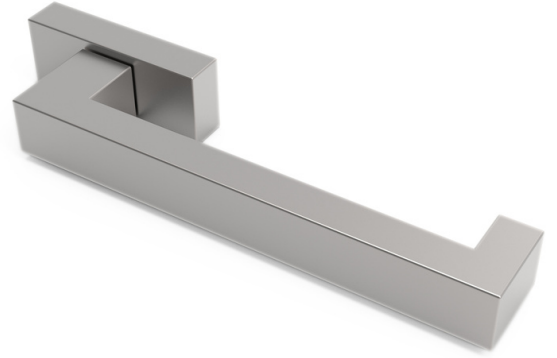
MJK-2993



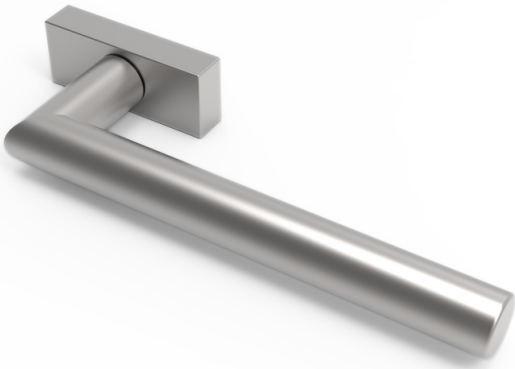
MJK-2992



MJK-3000



MJK-3001



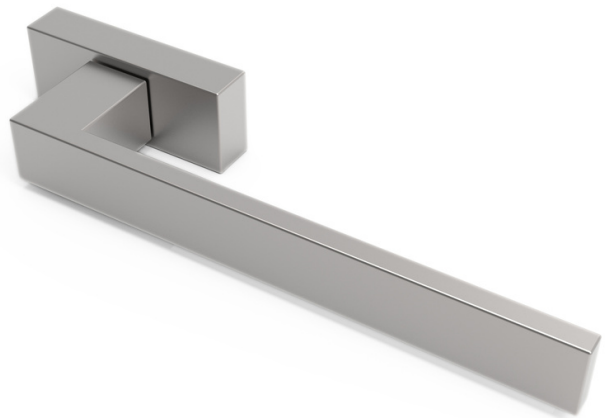
MJK-3002



MJK-2994



MJK-3004



MJK-2999

Item No.: #MJK-3069

CNC
Machined

Solid
Brass



- Polished Chrome
- Satin Nickel
- Matte Black
- Antique Brass
- Satin Brass
- Polished Brass

Item No.	Description	Handle Size			C to C
		L	H	W	
MJK-3069.A	Glass Door Handle	630 mm	48 mm	30 mm	605 mm
MJK-3069.B	Glass Door Handle	540 mm	48 mm	30 mm	512 mm
MJK-3069.C	Glass Door Handle	406 mm	48 mm	25 mm	382 mm
MJK-3069.D	Glass Door Handle	313 mm	48 mm	25 mm	288 mm
MJK-3069.E	Glass Door Handle	217 mm	48 mm	25 mm	192 mm

Item No.: #MJK-3069

CNC
Machined

Solid
Brass



- Polished Chrome
- Satin Nickel
- Matte Black
- Antique Brass
- Satin Brass
- Polished Brass

Item No.	Description	Handle Size			C to C
		L	H	W	
MJK-3069.A	Glass Door Handle	630 mm	48 mm	30 mm	605 mm
MJK-3069.B	Glass Door Handle	540 mm	48 mm	30 mm	512 mm
MJK-3069.C	Glass Door Handle	406 mm	48 mm	25 mm	382 mm
MJK-3069.D	Glass Door Handle	313 mm	48 mm	25 mm	288 mm
MJK-3069.E	Glass Door Handle	217 mm	48 mm	25 mm	192 mm

Item No.: #MJK-3086

CNC
Machined

Solid
Brass

A







B

C

D

E

F

- Polished Chrome 
- Satin Nickel 
- Matte Black 
- Antique Brass 
- Satin Brass 
- Polished Brass 

Item No.	Description	Handle Size			C to C
		L	H	W	
MJK-3086.A	Glass Door Handle	630 mm	48 mm	30 mm	605 mm
MJK-3086.B	Glass Door Handle	540 mm	48 mm	30 mm	512 mm
MJK-3086.C	Glass Door Handle	406 mm	48 mm	25 mm	382 mm
MJK-3086.D	Glass Door Handle	313 mm	48 mm	25 mm	288 mm
MJK-3086.E	Glass Door Handle	217 mm	48 mm	25 mm	192 mm

Item No.: #MJK-3069

CNC
Machined

Solid
Brass



- Polished Chrome
- Satin Nickel
- Matte Black
- Antique Brass
- Satin Brass
- Polished Brass

Item No.	Description	Handle Size			C to C
		L	H	W	
MJK-3069.A	Glass Door Handle	630 mm	48 mm	30 mm	605 mm
MJK-3069.B	Glass Door Handle	540 mm	48 mm	30 mm	512 mm
MJK-3069.C	Glass Door Handle	406 mm	48 mm	25 mm	382 mm
MJK-3069.D	Glass Door Handle	313 mm	48 mm	25 mm	288 mm
MJK-3069.E	Glass Door Handle	217 mm	48 mm	25 mm	192 mm



Item No.#MJK-1727



Item No.#MJK-1726

Brass

Polished Chrome

- Polished Chrome
- Satin Nickel
- Matte Black
- Antique Brass
- Satin Brass
- Polished Brass

Item No.	Description	Handle Size			C to C
MJK-1727	Glass Door handle (Set of 2)	240mm	65mm	55mm	207mm
MJK-1726	Glass Door handle (Set of 2)	190mm	65mm	60mm	152mm



Item No.#POH-9-8S



Item No.#POH-9-6d

Brass

Polished Chrome

- Polished Chrome
- Satin Nickel
- Matte Black
- Antique Brass
- Satin Brass
- Polished Brass

Item No.	Description	Handle Size			C to C
POH-9-8S	Glass Door handle (Set of 2)	246mm	60mm	80mm	202mm
POH-9-6d	Glass Door handle (Set of 2)	193mm	60mm	70mm	151mm



Brass

Polished Chrome

Chrome

- Polished Chrome
- Satin Nickel
- Matte Black
- Antique Brass
- Satin Brass
- Polished Brass

Item No.	Description	Handle Size			C to C
POH-8-S	Symphony 8" Single Pull handle	270mm	55mm	40mm	202mm
POH-6-S	Symphony 6" Single Pull handle	220mm	60mm	40mm	153mm



Brass

Polished Chrome

- Polished Chrome
- Satin Nickel
- Matte Black
- Antique Brass
- Satin Brass
- Polished Brass

Item No.	Description	Handle Size			C to C
Poh-10-8S	Symphony II 8" Single Pull Handle	290mm	60mm	40mm	203mm
POH-10-6S	Symphony II 6" Single Pull handle	235mm	60mm	40mm	153mm



Item No.	Description	Handle Size			C to C
CP-14	Single Pull handle	210mm	55mm	17mm	191mm
POH-14-6.B	Single Pull handle	175mm	65mm	22mm	153mm



Item No.	Description	Handle Size			C to C
503-18-8T	8" Mitered Brass Shower Door Pull	220mm	60mm	20mm	203mm
506.6D	6" Mitered Brass Shower Door Pull	170mm	60mm	20mm	150mm

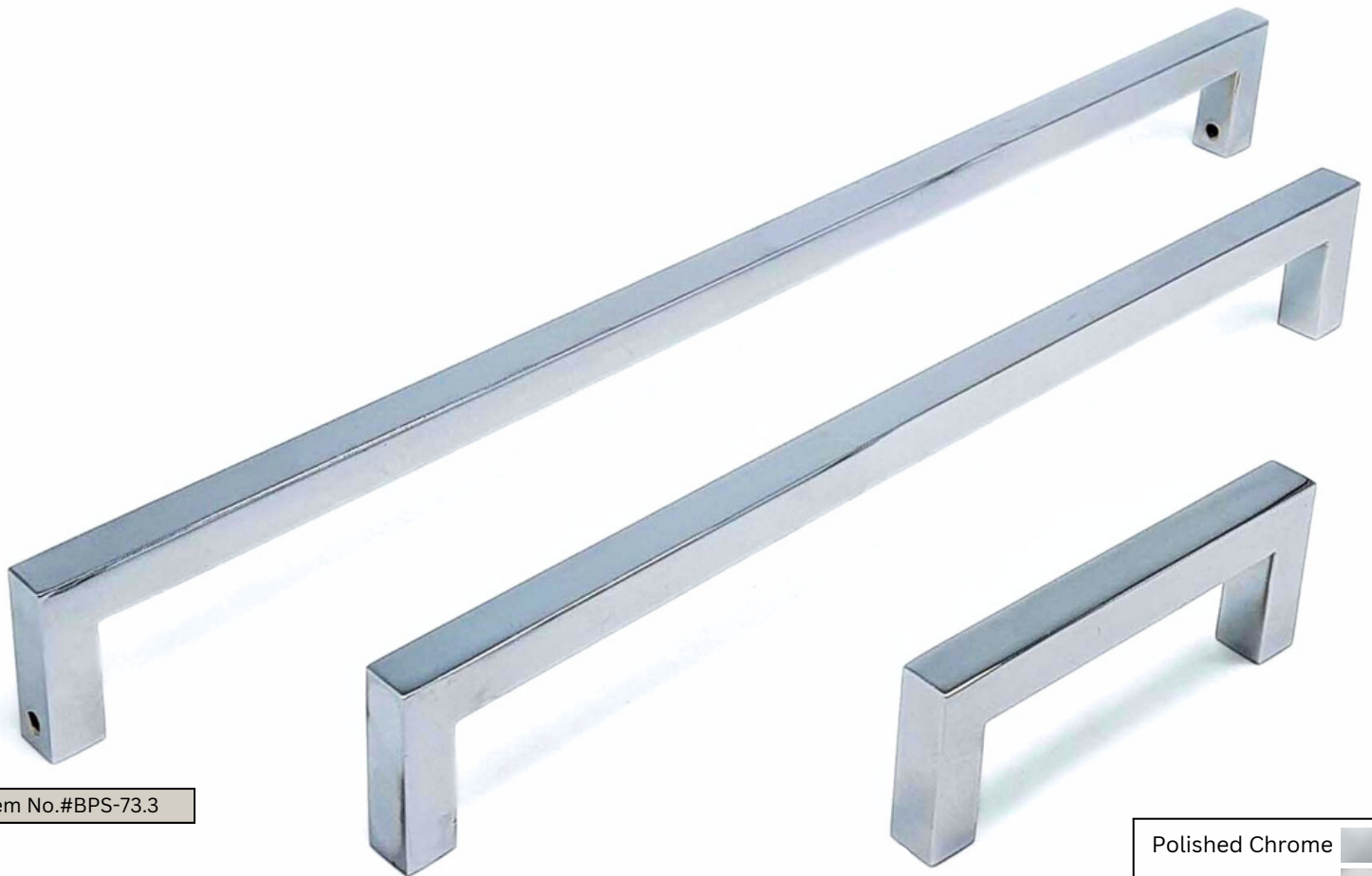
Polished Chrome
Brass



- Polished Chrome
- Satin Nickel
- Matte Black
- Antique Brass
- Satin Brass
- Polished Brass

Item No.	Description	Handle Size			C to C
		L	H	W	
POH-11.24PT	Round Pipe Glass Door handle	580mm	60mm	20mm	560mm
POH-14.P4	Round Pipe Glass Door handle	480mm	60mm	20mm	456mm
POH-11.12PT	Round Pipe Glass Door handle	320mm	60mm	20mm	304mm
POH-11.8PT	Round Pipe Glass Door handle	220mm	60mm	20mm	202mm
POH-11.6PT	Round Pipe Glass Door handle	170mm	60mm	20mm	150mm

Polished Chrome
Brass



Item No.#BPS-73.3

Item No.#BPS-73.2

Item No.#BPS-73.1

- Polished Chrome
- Satin Nickel
- Matte Black
- Antique Brass
- Satin Brass
- Polished Brass

Item No.	Description	Handle Size			C to C
		L	H	W	
BPS-73.3	Square Pipe Glass Door handle	630mm	60mm	20mm	610mm
BPS-73.2	Square Pipe Glass Door handle	475mm	60mm	20mm	457mm
BPS-73.1	Square Pipe Glass Door handle	172mm	60mm	20mm	152mm

Glass Door Knobs





GET IN TOUCH

-  +91 95574 69320
-  jamal@mjkhardware.in
-  [mohd.jamal.mjk](#)
-  www.accufithardware.com
-  Ashrafi House, Mufti Tola
Moradabad - 244001 U.P (INDIA)