

# AFFORDABLE STORAGE CONTAINERS

## 40' 1-Trip Container Specifications



### What is a 1-Trip?

A container that was built in China and has completed one international trip with cargo. These are the newest containers available state side.

### Special Features:

- Factory Vents
- Marine Grade Plywood Flooring - Hard Resin
- Anti-Theft Lockbox
- Single Handle - Easy Open

Dimensions: Exterior | Interior  
High Cube - 40' X 8' X 9'6" | 39'5" x 7'8" x 8'9"

Wood Flooring - Hard Resin



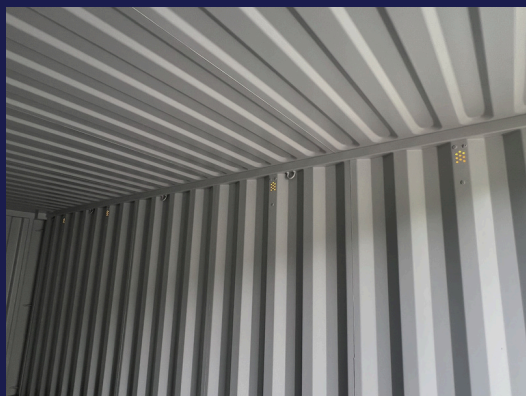
Single Door Handle



Outside View of Vents



Factory Installed Vents



Anti-Theft Lockbox



# AFFORDABLE STORAGE CONTAINERS

## 40' **Cargo Worthy** Container Specifications



### What is Cargo Worthy?

Cargo worthy units are typically used between 12-20 years old. good door seals, floor in good shape, structurally sound, may have a few patches and surface rust, but still weather resistant. These are the best of the used category.

### Special Features:

- 1 1/8" Plywood Floors
- 2 Factory Vents
- Locking at the Door Rods



### Dimensions:    Exterior | Interior

Standard - 40' X 8' X 8'6"    | 39'5" x 7'8" x 7'9"

High Cube - 40' X 8' X 9'6"    | 39'5" x 7'8" x 8'9"





# AFFORDABLE STORAGE CONTAINERS

## 40' Wind & Water Tight Container Specifications



### What is Wind & Water Tight?

Wind & water tight units have the most wear and tear of the used category. Typically have more patches, surface rust and forklift skids. Still structurally sound, doors function properly, just not very visually pleasing.

### Dimensions: Exterior | Interior

Standard - 40' X 8' X 8'6" | 39'5" x 7'8" x 7'9"

High Cube - 40' X 8' X 9'6" | 39'5" x 7'8" x 8'9"



Wall Patch



Roofing Patch

