

pulse 

 Sportcaster



PREMIUM
OUTWEAR

WINTER
24

Contents

MENS APPAREL

4 - 11	JACKETS
12- 24	LAYERING
25 - 30	PANTS

WOMENS APPAREL

32 - 46	JACKETS
47 - 56	LAYERING
57 - 63	PANTS

KIDS APPAREL

65 -74	GIRLS JACKETS
75 - 79	GIRLS PANTS
80 - 81	GIRLS SNOW SETS
83 - 92	BOYS JACKETS
93 - 98	BOYS PANTS
99 - 101	BOYS SNOW SETS

ACCESSORIES

102 - 104	BAGS
105 - 111	BOOTS



Mens



**VANTAGE****000**

TRILAMINATE SHELL JACKET

FABRIC:

- 10K WPB POLYESTER

+ PLUS SIZE AVAILABLE**FEATURES:**

- MECHANIC STRETCH
- WATERTIGHT ZIPPERS
- DWR COATING
- FULLY TAPED SEAMS
- PIT ZIPS
- TECH SNOWSKIRT
- ADJUSTABLE HOOD
- CHEST POCKET
- HAND ZIP POCKETS

COLORS:

1. BLACK
2. BOURBON
3. SEAFOAM

STATEMENT**001**

INSULATED JACKET

FABRIC:

- 10K WPB OXFORD POLYESTER

+ PLUS SIZE AVAILABLE**FEATURES:**

- DWR COATING
- CRITICAL TAPED SEAMS
- PIT ZIPS
- TECH SNOWSKIRT
- THERMAL MESH LINING
- NINJA CUFFS
- ADJUSTABLE HOOD
- AUDIO POCKET
- GOGGLE POCKET
- CHEST POCKET

COLORS:

1. BLACK
2. TARMAC
3. WHITE ACID

4. NAVY ACID

VENTURE**003**

INSULATED JACKET

FABRIC:

- 10K WPB POLYESTER

+ PLUS SIZE AVAILABLE**FEATURES:**

- DWR COATING
- CRITICAL TAPED SEAMS
- PIT ZIPS
- TECH SNOWSKIRT
- THERMAL MESH LINING
- NINJA CUFFS
- ADJUSTABLE HOOD
- AUDIO POCKET
- GOGGLE POCKET
- CHEST POCKET

COLORS:

1. OD CAMO
2. BLUE DUSK
3. ASSORTED



ARBOR 004

INSULATED JACKET

FABRIC: **+ PLUS SIZE AVAILABLE**

- 10K WPB POLYESTER OXFORD

FEATURES:

- DWR COATING
- CRITICAL TAPED SEAMS
- PIT ZIPS
- TECH SNOWSKIRT
- THERMAL MESH LINING
- NINJA CUFFS
- ADJUSTABLE HOOD
- AUDIO POCKET
- GOGGLE POCKET
- SLEEVE POCKET

COLORS:

1. BLACK
2. OLIVE
3. SLATE

LIVINGSTON 005

INSULATED BOARD JACKET

FABRIC: **+ PLUS SIZE AVAILABLE**

- 10K WPB POLYESTER

FEATURES:

- DWR COATING
- CRITICAL TAPED SEAMS
- PIT ZIPS
- TECH SNOWSKIRT
- THERMAL MESH LINING
- NINJA CUFFS
- ADJUSTABLE HOOD
- AUDIO POCKET
- GOGGLE POCKET

COLORS:

1. BLACK
2. HEATHER GREY
3. MOSS

CREST 006

INSULATED JACKET

FABRIC: **+ PLUS SIZE AVAILABLE**

- 10K WPB POLYESTER

FEATURES:

- DWR COATING
- CRITICAL TAPED SEAMS
- PIT ZIPS
- TECH SNOWSKIRT
- THERMAL MESH LINING
- NINJA CUFFS
- DETACHABLE HOOD
- CHEST POCKETS
- AUDIO POCKET
- GOGGLE POCKET

COLORS:

1. BLACK-GRID
2. OLIVE
3. ASSORTED



PEAK 007

INSULATED JACKET

FABRIC:

- 10K WPB TECH-STRETCH POLYESTER

+ PLUS SIZE AVAILABLE

FEATURES:

- DWR COATING
- CRITICAL TAPED SEAMS
- PIT ZIPS
- TECH SNOWSKIRT
- THERMAL MESH LINING
- NINJA CUFFS
- AUDIO POCKET
- GOGGLE POCKET
- WP CHEST POCKET
- WP CENTER FRONT ZIP

COLORS:

1. SPRUCE GREEN / BLACK
2. BLUE DUSK / BLACK
3. STONE / BLACK



ROCCO 009

INSULATED JACKET

FABRIC:

- 10K WPB 2 TONE POLY / OXFORD

+ PLUS SIZE AVAILABLE

FEATURES:

- DWR COATING
- CRITICAL TAPED SEAMS
- PIT ZIPS
- TECH SNOWSKIRT
- THERMAL MESH LINING
- NINJA CUFFS
- INSULATED HOOD
- AUDIO POCKET
- GOGGLE POCKET
- CHEST POCKET

COLORS:

1. GUN METAL
2. OLIVE
3. EGGPLANT
4. GOLD



CASCADE 012

3 IN 1 JACKET W/ SOFT SHELL LINER

FABRIC:

- 10K WPB 320D POLYESTER TASLON

+ PLUS SIZE AVAILABLE

FEATURES:

- DWR COATING
- CRITICAL TAPED SEAMS
- REMOVABLE SOFT SHELL LINER
- MESH LINED SHELL JACKET
- ADJUSTABLE CUFFS
- REMOVABLE HOOD
- CHEST POCKET

COLORS:

1. BLACK / SLATE SHELL
2. SCOUT GREEN / SLATE SHELL
3. BOURBON / SLATE SHELL



SIBERIAN **013**

INSULATED SOFT SHELL

FABRIC:

+ PLUS SIZE AVAILABLE

- WPB 8K POLY SPANDEX

FEATURES:

- DWR COATING
- 3 LAYER SOFT SHELL
- WATERTIGHT CHEST ZIPS
- NINJA CUFFS
- REMOVABLE HOOD
- QUILTED LINING
- INNER STORAGE POCKET
- ZIPPERED HAND POCKETS

COLORS:

- 1. BLACK
- 2. GREY PEBBLE
- 3. BLUE DUSK
- 4. TRUFFLE
- 5. DARK GREEN CAMO



**EVERETT****014****3-IN-1 SYSTEM JACKET****FABRIC:**

- WPB 10K MECHANIC STRETCH POLYESTER

FEATURES:

- DWR COATING
- CRITICAL TAPED SEAMS
- REMOVABLE FLEECE SHIRT JACKET
- ZIPPERED CHEST POCKET
- TECH SNOWSKIRT
- INSULATED HOOD
- GOGGLE POCKET
- ADJUSTABLE CUFFS

COLORS:

1. BLACK / BLACK / GREEN PLAID
2. BLUE DUSK / BLACK / BLACK LINER
3. EGGPLANT / SLATE / BLACK LINER

ALTITUDE 2.0**1142****3-IN-1 SYSTEM JACKET****FABRIC:**

- WPB MECHANIC STRETCH POLY

FEATURES:

- DWR COATING
- CRITICAL TAPED SEAMS
- REMOVABLE PUFF LINER
- ADJUSTABLE CUFFS
- ADJUSTABLE HOOD
- ZIPPERED HAND POCKETS

COLORS:

1. BLACK / SLATE LINER
2. SLATE / BLACK LINER
3. STEEL BLUE / SLATE LINER

+ PLUS SIZE AVAILABLE**COLONY****1130****HEAVY INSULATED PARKA****FABRIC:**

- OXFORD POLY // FULL QUILTED LINING.

FEATURES:

- ACRYLIC/POLYESTER FAUX-FUR TRIM AT HOOD
- ELASTIC DRAWSTRING/TOGGLE
- HOOK AND LOOP AT SLEEVES
- PATCH POCKETS; FRONT
- PLACKET WITH 5 SNAPS OVER FRONT ZIPPER
- ZIP CHEST POCKETS
- DWR COATING

COLORS:

1. BLACK
2. CAVIAR
3. ASSORTED

+ PLUS SIZE AVAILABLE



MAMMOTH 015
SHERPA LINED QUILTED SHIRT JACKET

FABRIC:

- POLYESTER HERRINGBONE

FEATURES:

- DWR COATING
- SYNTHETIC DOWN FILL
- SNAP CHEST POCKET
- HAND POCKETS
- SNAP FRONT CLOSURE
- SNAP OPEN CUFF
- SHERPA LINING

COLORS:

1. BLACK
2. NAVY
3. CHARCOAL



SIGNATURE 016
SYNTHETIC DOWN SHIRT JACKET

FABRIC:

- 300T POLYESTER

+ PLUS SIZE AVAILABLE

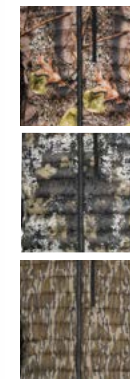
FEATURES:

- DWR COATING
- SYNTHETIC DOWN FILL
- SNAP CHEST POCKET
- HAND POCKETS
- SNAP FRONT CLOSURE
- ELASTIC CUFFS

COLORS:

1. BLACK
2. NAVY
3. SLATE
4. OLIVE





TELLURIDE JACKET

017

SYNTHETIC DOWN HOODIE

FABRIC:

+ PLUS SIZE AVAILABLE

- WR MINI RIPSTOP POLYESTER

FEATURES:

- DWR COATING
- SYNTHETIC DOWN FILL
- ZIPPERED CHEST POCKET
- ZIPPERED HAND POCKETS
- INSULATED HOOD
- ELASTIC CUFFS

COLORS:

- 1. BLACK
- 2. NAVY
- 3. GUNMETAL
- 4. TRUFFLE
- 5. BURLY TAN
- 6. PREDATOR CAMO
- 7. BOTTOMLAND CAMO

TELLURIDE VEST

018

SYNTHETIC DOWN VEST

FABRIC:

+ PLUS SIZE AVAILABLE

- WR MINI RIPSTOP POLYESTER

FEATURES:

- DWR COATING
- SYNTHETIC DOWN FILL
- ZIPPERED CHEST POCKET
- ZIPPERED HAND POCKETS
- ELASTIC RIB ARMHOLE

COLORS:

- 1. BLACK
- 2. NAVY
- 3. GUNMETAL
- 4. TRUFFLE
- 5. BURLY TAN
- 6. PREDATOR CAMO
- 7. BOTTOMLAND CAMO


POWDERDOWN JACKET 1126

PACKABLE 90/10 DOWN JACKET

FABRIC: + PLUS SIZE AVAILABLE

- 400T NYLON SHELL

FEATURES:

- 90/10 DUCK DOWN FILL
- WATER REPELLENT
- 84 GRAM FILL WEIGHT
- PACKABLE INTO POCKET
- ZIPPERED POCKETS
- DOWN PROOF CONSTRUCTION
- LIGHT WEIGHT

COLORS:

1. BLACK
2. HEAVY METAL
3. HUNTER GREEN
4. CRIMSON
5. EGGPLANT
6. NAVY ACID

POWDER DOWN VEST 1127

PACKABLE 90/10 DOWN VEST

FABRIC: + PLUS SIZE AVAILABLE

- 400T NYLON SHELL

FEATURES:

- 90/10 DUCK DOWN FILL
- WATER REPELLENT
- 52 GRAM FILL WEIGHT
- PACKABLE INTO POCKET
- ZIPPERED POCKETS
- DOWN PROOF CONSTRUCTION
- LIGHTWEIGHT

COLORS:

1. BLACK
2. HEAVY METAL
3. HUNTER GREEN
4. CRIMSON
5. EGGPLANT
6. NAVY ACID

LIVINGSTON SHELL 1117

SOFT SHELL SHIRT JACKET

FABRIC: + PLUS SIZE AVAILABLE

- WPB 8K 3 LAYER 2-TONE POLYESTER TWILL

FEATURES:

- 3 LAYER CONSTRUCTION
- WINDBLOCK MEMBRANE
- DWR TREATMENT
- BONDED FLEECE BACKING
- PATCHED CHEST POCKET
- WIND & WATER RESISTANT
- HAND POCKET

COLORS:

1. BLACK
2. HEATHER GREY
3. MOSS

**CORE SHELL 3.0****1118****FITTED SOFT SHELL JACKET****FABRIC:****+ PLUS SIZE AVAILABLE**

- 3 LAYER POLY SPANDEX RIPSTOP

FEATURES:

- 3 LAYER CONSTRUCTION
- WINDBLOCK MEMBRANE
- D.W.R. TREATMENT
- FLEECE LINED
- WIND & WATER RESISTANT
- ZIPPERED HAND POCKETS
- ZIPPERED CHEST POCKETS

COLORS:

1. BLACK
2. GUNMETAL
3. OLIVE
4. BURLY CAMO
5. PREDATOR CAMO
6. BOTTOMLAND CAMO

CORE SHELL HOODIE 3.0**1121****STRETCH SOFT SHELL HOODIE****FABRIC:****+ PLUS SIZE AVAILABLE**

- 3 LAYER POLY SPANDEX RIPSTOP

FEATURES:

- 3 LAYER CONSTRUCTION
- WINDBLOCK MEMBRANE
- D.W.R. TREATMENT
- FLEECE LINED
- WIND & WATER RESISTANT
- ZIPPERED HAND POCKETS
- ZIPPERED CHEST POCKETS
- ADJUSTABLE HOOD

COLORS:

1. BLACK
2. GUNMETAL
3. OLIVE

MIRAMAR**1122****STRETCH SOFT SHELL HOODIE****FABRIC:**

- 3 LAYER POLYESTER MECHANIC STRETCH TWILL

FEATURES:

- 3 LAYER CONSTRUCTION
- WINDBLOCK MEMBRANE
- D.W.R. TREATMENT
- FLEECE LINED
- WIND & WATER RESISTANT
- ZIPPERED HAND POCKETS
- ZIPPERED CHEST POCKETS
- ADJUSTABLE HOOD

COLORS:

1. BLACK
2. OLIVE CAMO
3. BLACK CAMO
4. BOTTOMLAND



GUNNER 1123

WATERPROOF HOODIE

FABRIC:

- WPB 8K 3 LAYER POLY SPANDEX

FEATURES:

- 3 LAYER CONSTRUCTION
- WINDBLOCK MEMBRANE
- SINGLE LAYER KNIT SIDE
- FLEECE LINED
- WIND & WATER RESISTANT
- ZIPPERED POCKETS
- ATTACHED HOOD
- ZIPPERED CHEST POCKET

COLORS:

1. BLACK
2. BLUE DUSK
3. ASSORTED



SOFT SHELL VEST 1120

3 LAYER SHELL VEST

FABRIC:

- WPB 8K 3 LAYER POLY SPANDEX

FEATURES:

- 3 LAYER CONSTRUCTION
- WINDBLOCK MEMBRANE
- D.W.R. TREATMENT
- FLEECE LINED
- WIND & WATER RESISTANT
- ZIPPERED HAND POCKETS
- ZIPPERED CHEST POCKET

COLORS:

1. BLACK
2. GREY PEBBLE
3. SLATE
4. STEEL BLUE
5. TRUFFLE
6. CHESTNUT
7. OLIVE

+ PLUS SIZE AVAILABLE



CLASSIC SOFT SHELL 1119

FULL ZIP SHELL JACKET

FABRIC:

- WPB 8K 3 LAYER POLY SPANDEX

FEATURES:

- 3 LAYER CONSTRUCTION
- WINDBLOCK MEMBRANE
- D.W.R. TREATMENT
- FLEECE LINED
- WIND & WATER RESISTANT
- ZIPPERED HAND POCKETS
- ZIPPERED CHEST POCKET

COLORS:

1. BLACK
2. GREY PEBBLE
3. SLATE
4. STEEL BLUE
5. TRUFFLE
6. CHESTNUT
7. OLIVE

+ PLUS SIZE AVAILABLE

**HEATED SOFTSHELL JACKET****F-1119-H****FABRIC:****+ PLUS SIZE AVAILABLE**

- WP POLYESTER

FEATURES:

- 3 LEVELS OF HEAT
- OPERATES WITH SIMPLE POWER BANK CHARGER NOT INCLUDED
- 3 LAYER CONSTRUCTION
- WBP 8K 3 LAYER POLY SPANDEX
- DWR TREATED SHELL
- HEAT ACTIVATED BY BUTTON
- FLEECE LINED

COLORS:

1. BLACK
2. BLACK CAMO

**HEATED SOFTSHELL VEST****F-1120-H****FABRIC:****+ PLUS SIZE AVAILABLE**

- WP POLYESTER

FEATURES:

- 3 LEVELS OF HEAT
- OPERATES WITH SIMPLE POWER BANK CHARGER NOT INCLUDED
- 3 LAYER CONSTRUCTION
- WBP 8K 3 LAYER POLY SPANDEX
- HEAT ACTIVATED BY BUTTON
- DWR TREATED
- FLEECE LINED

COLORS:

1. BLACK
2. BLACK CAMO





SOMERSET VEST

020

SWEATER FLEECE VEST

FABRIC:

+ PLUS SIZE AVAILABLE

- POLYESTER 2 TONE SWEATER FLEECE

FEATURES:

- ZIPPERED CHEST POCKET
- ZIPPERED HAND POCKETS
- NON PILL SWEATER FLEECE
- BRUSHED LINED
- LIGHT WEIGHT & LOFTY
- ELASTIC HEM & ARMHOLE

COLORS:

- 1. CHARCOAL
- 2. HEATHER GREY
- 3. NAVY
- 4. BRICK
- 5. RUM
- 6. FERN

SOMERSET

022

SWEATER FLEECE PULLOVER

FABRIC:

+ PLUS SIZE AVAILABLE

- POLYESTER 2 TONE SWEATER FLEECE

FEATURES:

- ZIPPERED CHEST POCKET
- SIDE HAND POCKETS
- 1/4 SNAP CLOSURE
- BRUSHED LINED
- LIGHT WEIGHT & LOFTY

COLORS:

- 1. CHARCOAL
- 2. HEATHER GREY
- 3. NAVY
- 4. BRICK
- 5. RUM
- 6. FERN

SOMERSET FULL ZIP

023

SWEATER FLEECE FULL ZIP

FABRIC:

+ PLUS SIZE AVAILABLE

- POLYESTER 2 TONE SWEATER FLEECE

FEATURES:

- ZIPPERED CHEST POCKET
- ZIPPERED HAND POCKETS
- NON PILL FLEECE
- BRUSH LINED
- LIGHT WEIGHT & LOFTY

COLORS:

- 1. CHARCOAL
- 2. HEATHER GREY
- 3. BRICK
- 4. NAVY
- 5. RUM
- 6. FERN

**SOMERSET 1/4 ZIP****021****1/4 FLEECE PULLOVER****FABRIC:****+ PLUS SIZE AVAILABLE**

- POLYESTER 2 TONE SWEATER FLEECE

FEATURES:

- ZIPPERED CHEST POCKET
- ZIPPERED HAND POCKETS
- NON PILL FLEECE
- BRUSH LINED
- LIGHT WEIGHT & LOFTY

COLORS:

1. CHARCOAL
2. HEATHER GREY
3. NAVY
4. BRICK
5. RUM
6. FERN

**RIDGELINE FULL ZIP****027****SWEATER FLEECE FULL ZIP HOODIE****FABRIC:****+ PLUS SIZE AVAILABLE**

- POLYESTER 2 TONE SWEATER FLEECE

FEATURES:

- ZIPPERED CHEST POCKET
- ZIPPERED HAND POCKETS
- NON PILL FLEECE
- BRUSH LINED
- LIGHT WEIGHT & LOFTY

COLORS:

1. CHARCOAL
2. HEATHER GREY
3. NAVY
4. BRICK
5. RUM
6. FERN

**JACKSON FLEECE****024****PRINTED SWEATER SHIRT JACKET****FABRIC:****+ PLUS SIZE AVAILABLE**

- POLYESTER SWEATER FLEECE

FEATURES:

- SIDE HANDWARMER POCKETS
- SNAP PLACKET
- CHEST POCKETS WITH SNAP CLOSURE
- BRUSH LINED
- MACHINE WASHABLE

COLORS:

1. CHARCOAL
2. NAVY
3. RUM
4. GREY
5. AZTEC PRINT



OXFORD FLEECE

026

FAUX WOOL FULL ZIP SWEATER

FABRIC:

+ PLUS SIZE AVAILABLE

- 2 TONE RIBBED DOBBY POLYESTER

FEATURES:

- LOFTY RIBBED FLEECE
- ZIPPERED POCKETS
- BRUSHED LINED
- FAUX WOOL LOOK
- HIGH COLLAR

COLORS:

1. BLACK
2. OD GREEN
3. ASSORTED



TITUS FULL ZIP

028

TECH FLEECE 1/2 ZIP

FABRIC:

- 390 G POLYESTER

FEATURES:

- MOISTURE WICKING
- ANTI PILL
- LIGHT WEIGHT & LOFTY
- ZIPPERED CHEST POCKET
- ZIPPERED HAND POCKETS
- ELASTIC HEM & CUFF

COLORS:

1. CHARCOAL
2. FOREST GREEN
3. GRAPHITE BLUE

**PRECISION 1/2 ZIP****029****WAFFLE STRETCH FLEECE****FABRIC:**

- 210 GSM WAFFLE POLYESTER / SPANDEX

FEATURES:

- 1/2 ZIP FRONT
- WELDED ZIPPERED CHEST POCKET
- ANTI PILL
- THUMB LOOP CUFF
- BRUSH LINED
- LIGHT WEIGHT & LOFTY

COLORS:

1. CHARCOAL
2. OLIVE
3. BURLY TAN CAMO
4. PREDATOR CAMO
5. BOTTOMLAND CAMO

**TASLON FLEECE****NS-1200****HYBRID FLEECE TASLON JACKET****FABRIC:**

- POLYESTER TASLON WITH FLEECE

FEATURES:

- DWR TASLON TOP
- ZIPPERED CHEST POCKET
- SIDE HAND POCKET
- FULL ZIP FRONT CLOSURE

COLORS:

1. BLACK / CHARCOAL
2. GREEN GREY/ CHARCOAL
3. BLUE DUSK / CHARCOAL

**FLEECE VEST****NS-1595****FULL ZIP FLEECE VEST****FABRIC:**

- 300G NON-PILL POLYESTER

FEATURES:

- ANTI PILLING
- SIDE POCKETS
- MACHINE WASHABLE

COLORS:

1. BLACK
2. HEATHER GREY

+ PLUS SIZE AVAILABLE

- SOFT HAND FEEL
- FULL ZIP VEST

3. DUSTY BLUE
4. OATMEAL



CLASSIC FLEECE **NS-1580**

FLEECE JACKET

FABRIC: **+ PLUS SIZE AVAILABLE**

- 300G NON-PILL POLYESTER

FEATURES:

- SIDE POCKETS
- NON-PILLING
- MACHINE WASHABLE
- SOFT HAND FEEL

COLORS:

- 1. BLACK
- 2. HEATHER GREY
- 3. DUSTY BLUE
- 4. OATMEAL

FLEECE HOODIE **NS-1581**

FLEECE HOODED JACKET

FABRIC: **+ PLUS SIZE AVAILABLE**

- 300G NON-PILL POLYESTER

FEATURES:

- SIDE POCKETS
- ANTI PILLING
- MACHINE WASHABLE
- SOFT HAND FEEL

COLORS:

- 1. BLACK
- 2. HEATHER GREY
- 3. DUSTY BLUE
- 4. OATMEAL

THERMAL TOP **PF-592**

BASE LAYER PULLOVER

FABRIC: **+ PLUS SIZE AVAILABLE**

- POLY STRETCH KNIT

FEATURES:

- WICKING
- COMFORT STRETCH
- ANTI PILL
- BRUSH LINED
- POP PACKAGING

COLORS:

- 1. BLACK

**THERMAL BOTTOM****PF-590**

BASE LAYER PULL ON

FABRIC:

- POLY STRETCH KNIT

FEATURES:

- WICKING
- COMFORT STRETCH
- ANTI PILL

- BRUSH LINED
- POP PACKAGING

+ PLUS SIZE AVAILABLE**COLORS:**

1. BLACK

SOMERSET PANT**NS-1596**

SWEATER FLEECE PANT

FABRIC:

- 2 TONE SWEATER FLEECE

FEATURES:

- NON PILL SWEATER FLEECE
- BRUSHED LINED
- LIGHT WEIGHT & LOFTY
- ELASTIC DRAWCORD WAIST
- HAND POCKETS

COLORS:

1. BLACK
2. HEATHER GREY

FLEECE PANT**NS-1597**

PULL ON FLEECE PANT

FABRIC:

- 300G NON-PILL POLYESTER

FEATURES:

- SIDE POCKETS
- NON-PILLING
- MACHINE WASHABLE

COLORS:

1. BLACK
2. NAVY

+ PLUS SIZE AVAILABLE

- SOFT HAND FEEL
- ELASTIC WAIST BAND
- ZIPPERED REAR POCKET



FLEECE PJ PANT

FLP

PAJAMA PANT

FABRIC:

+ PLUS SIZE AVAILABLE

- POLYESTER PRINTED FLEECE

FEATURES:

- SOFT HAND PRINTED FLEECE
- ELASTIC WAISTBAND
- RELAX FIT
- ADJUSTABLE CORD
- HAND POCKET

COLORS:

1. NAVY/RED/WHITE PLAID
2. FISH
3. PAWS



AXEL SHIRT JACKET

FTSJ

BERBER LINED THERMAL SHIRT JACKET

FABRIC:

+ PLUS SIZE AVAILABLE

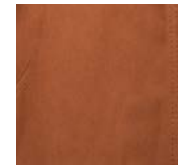
- COTTON / POLYESTER

FEATURES:

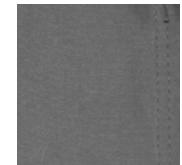
- ANTI PILLING
- MACHINE WASHABLE
- SOFT HAND FEEL
- SIDE POCKETS
- PLUSH LINING
- ADJUSTABLE CUFFS

COLORS:

1. BLACK
2. CHARCOAL
3. NAVY



(BROWN)



(CHARCOAL)

CWJ

CANVAS WORK JACKET

FABRIC:

+ PLUS SIZE AVAILABLE

- COTTON SHELL/POLYESTER LINING

FEATURES:

- ATTACHED ROUNDED BIB HOOD
- DURABLE STITCHING
- REINFORCED ARTICULATED ELBOWS
- SNAP CLOSURE
- HEAVY DUTY FULL LENGTH METAL ZIPPER
- 4 POCKETS FOR STORAGE
- MACHINE WASHABLE

COLORS:

1. BLACK
2. BROWN
3. CHARCOAL

**RANCH JACKET****025****FAUX OILSKIN JACKET****FABRIC:****+ PLUS SIZE AVAILABLE**

- COTTON/POLYESTER / FAUX OILSKIN

FEATURES:

- SHERPA LINED COLLAR
- ZIPPERED CHEST POCKET
- INTERIOR ZIPPERED POCKET
- TWO FRONT POCKETS
- BUTTON CUFFS
- ELBOW PATCHES
- ADJUSTABLE WAIST WITH CORDS
- FLANNEL PLAID LINING

COLORS:

1. BLACK
2. BROWN
3. ASSORTED

**CANVAS JACKET****CAN-101****HEAVY COTTON CANVAS COAT****FABRIC:****+ PLUS SIZE AVAILABLE**

- WASHED 12 OZ. CANVAS BODY

FEATURES:

- WASHED 12 OZ. CANVAS BODY
- 2 SIDE POCKETS
- FULL LENGTH METAL ZIPPER
- INSULATED

COLORS:

1. BLACK
2. GREY
3. CHOCOLATE
4. BARK
5. BROWN

**BRUSHED COTTON FLANNEL****FL-405****FLANNEL BUTTON-UP SHIRT****FABRIC:****+ PLUS SIZE AVAILABLE**

- COTTON

FEATURES:

- SOFT COTTON FLANNEL
- BUTTON FRONT
- CHEST POCKET
- PLAID DESIGN
- FLANNEL BODY

COLORS:

1. CHARCOAL
2. HEATHER GREY
3. NAVY
4. BRICK
5. RUM
6. FERN
7. ASSORTED



BRAWNY **FLBW-405**

BRAWNY WEIGHT FLANNEL SHIRT

FABRIC:

- 300G NON-PILL POLYESTER

+ PLUS SIZE AVAILABLE

FEATURES:

- SOFT COTTON FLANNEL
- BUTTON FRONT
- CHEST POCKET
- ADJUSTABLE CUFF
- BRUSHED HAND FEEL

COLORS:

- 1. BLACK
- 2. GREY
- 3. BLUE
- 4. ORANGE
- 5. GREEN
- 6. MULTI

FLEECE SHIRT **FLT**

FLEECE BUTTON UP SHIRT

FABRIC:

- POLYESTER PRINTED FLEECE

FEATURES:

- PRINTED PLAID DESIGN
- NON-PILLING
- MACHINE WASHABLE
- CHEST POCKET
- ADJUSTABLE CUFFS

COLORS:

- 1. BLACK/WHITE
- 2. BLACK/GREY
- 3. GREEN/BLACK
- 4. CAMEL
- 5. BLUE

SHERPA FLEECE **C-409**

SHERPA LINED HOODED FLEECE JACKET

FABRIC:

- NON PILL PRINTED FLEECE

+ PLUS SIZE AVAILABLE

FEATURES:

- SHERPA LINED
- PRINTED PLAID DESIGN
- NON-PILLING
- MACHINE WASHABLE
- 3 PC HOOD
- CHEST POCKETS
- SIDE POCKETS

COLORS:

- 1. BLACK
- 2. RED
- 3. BROWN
- 4. BLUE
- 5. GREY
- 6. ASSORTED

**WOODSMAN QUILT****FLJ****QUILT LINED FLANNEL SHIRT JACKET****FABRIC:****+ PLUS SIZE AVAILABLE**

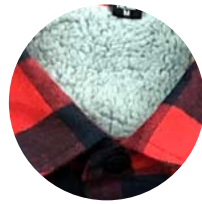
- 60/40 POLY COTTON

FEATURES:

- SOFT FLANNEL SHELL
- SNAP FRONT CLOSURE
- QUILTED INSULATION
- DOUBLE CHEST POCKETS
- 2 SIDE HAND POCKETS
- NON-PILLING
- MACHINE WASHABLE

COLORS:

1. BLACK
2. BLUE
3. BROWN
4. GREEN
5. ORANGE
6. ASSORTED

**SHERPA****WOODSMAN SHERPA****FLSJ****SHERPA LINED FLANNEL SHIRT JACKET****FABRIC:****+ PLUS SIZE AVAILABLE**

- 60/40 POLY COTTON

FEATURES:

- SOFT FLANNEL SHELL
- SNAP FRONT CLOSURE
- SHERPA LINED BODY
- QUILTED INSULATED ARMS
- DOUBLE CHEST POCKETS
- 2 SIDE HAND POCKETS
- NON-PILLING

COLORS:

1. BLACK
2. BLUE
3. RED
4. GREEN
5. ASSORTED (2 PLAIDS)

pulse

**SHERPA****WOODSMAN HOODED SHERPA****FLHJ****SHERPA LINED HOODED FLANNEL****FABRIC:****+ PLUS SIZE AVAILABLE**

- 60/40 POLY COTTON

FEATURES:

- SOFT FLANNEL SHELL
- SNAP FRONT CLOSURE
- SHERPA LINED BODY
- QUILTED INSULATED ARMS
- DOUBLE CHEST POCKETS
- 2 SIDE HAND POCKETS
- JERSEY FLEECE LINED HOOD
- NON-PILLING

COLORS:

1. GREEN
2. RED BUFFALO
3. TAN
4. NAVY
5. RED CHECKS
6. BLUE



CLASSIC BIB

120

MID WAIST SNOW BIB

FABRIC:

- WP TECH STRETCH POLYESTER

+ PLUS SIZE AVAILABLE

FEATURES:

- DOUBLE CLOSURE FLY
- D.W.R. TREATMENT
- LEG SNOW CUFFS
- ADJUSTABLE SUSPENDERS
- ELASTIC SIDE WAISTBAND

COLORS:

1. BLACK
2. CHARCOAL
3. NAVY

OVERLAND BIB

121

HIGH RISE SNOW BIB

FABRIC:

- WP DOBBY POLYESTER

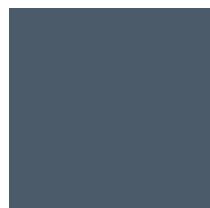
+ PLUS SIZE AVAILABLE

FEATURES:

- CRITICAL TAPED SEAT SEAM
- ZIPPERED LEG OPENING
- FULL RISE PROTECTION
- ZIPPERED POCKET
- D.W.R. TREATMENT
- LEG SNOW CUFFS
- ADJUSTABLE SUSPENDERS
- ELASTIC SIDE WAISTBAND

COLORS:

1. BLACK
2. STEEL BLUE

**VERTEX BIB****114****RENTAL BUILT REINFORCED SNOW BIB****FABRIC:**

- W.P. NYLON TASLON

+ PLUS SIZE AVAILABLE**FEATURES:**

- DWR COATING
- CRITICAL TAPED SEAMS
- ADJUSTABLE SUSPENDERS
- BAR TACK STRESS POINTS
- ZIPPERED POCKETS
- LEG SNOW CUFFS
- SIDE RIB KNIT PANELS
- DOUBLE STITCHED SEAT
- TASLON ZIPPERS
- ELASTIC BACK WAIST

COLORS:

1. BLACK
2. GUNMETAL

**CLASSIC PANT****117****INSULATED PULL ON PANT****FABRIC:**

- W.P. TECH STRETCH POLYESTER

+ PLUS SIZE AVAILABLE**FEATURES:**

- D.W.R. TREATMENT
- ELASTIC WAISTBAND
- LEG SNOW CUFFS
- DRAW STRING CLOSURE
- ZIPPERED POCKETS

COLORS:

1. BLACK
2. CHARCOAL
3. OLIVE

**CARGO PANT****125****INSULATED CARGO SNOWBOARD PANT****FABRIC:**

- W.P. TECH STRETCH POLYESTER

+ PLUS SIZE AVAILABLE**FEATURES:**

- CRITICAL TAPE SEAM SEAT
- LEG SNOW CUFFS
- ZIPPERED POCKETS
- ELASTIC SIDE WAISTBAND
- OXFORD REINFORCED CUFF
- CARGO POCKETS

COLORS:

1. BLACK
2. GREY PEBBLE
3. CHARCOAL
4. TAN
5. CAMO
6. WHITE



SOFT SHELL PANT

115

FLEECE LINED SHELL PANT

FABRIC:

+ PLUS SIZE AVAILABLE

- W.P 8K 3 LAYER POLY / SPANDEX

FEATURES:

- 4-WAY STRETCH FABRIC
- 3 LAYER CONSTRUCTION
- WIND BLOCK MEMBRANE
- D.W.R. TREATMENT
- ARTICULATED KNEES
- LEG SNOW CUFFS
- SIDE CARGO POCKET
- HAND POCKETS
- BACK ZIP POCKET

COLORS:

1. BLACK
2. SLATE
3. TRUFFLE



PUFF PANT

116

QUILTED INSULATED PANT

FABRIC:

+ PLUS SIZE AVAILABLE

- WR MINI RIPSTOP POLYESTER

FEATURES:

- SYNTHETIC DOWN FILL
- QUILTED INSULATION
- LIGHTWEIGHT
- RIB ELASTIC WAIST WITH DRAWCORD
- SIDE HAND POCKET
- RIB CUFF

COLORS:

1. BLACK
2. OLIVE
3. NAVY
4. GUNMETAL
5. TRUFFLE



TIMBER PANT

118

INSULATED RELAXED FIT BOARD BIB

FABRIC:

+ PLUS SIZE AVAILABLE

- 10K WPB STRETCH POLYESTER

FEATURES:

- DWR COATING
- TAPED SEAMS
- REMOVABLE SUSPENDERS
- ADJUSTABLE WAIST
- LEG VENTS
- ZIPPERED POCKETS
- LEG SNOW PUFFS
- OXFORD REINFORCED CUFF

COLORS:

1. BLACK
2. TARMAC
3. BLUE DUSK

**SUSPENDER SHELL****150**

CONVERTIBLE FULL ZIP PANT

SUSPENDER**130**CONVERTIBLE SUSPENDER INSULATED PANT
FABRIC:**+ PLUS SIZE AVAILABLE**

• W.P. 320D POLY TASLON / OXFORD

FEATURES:

- REMOVABLE SUSPENDERS
- FULL ZIP LEGS (*150)
- CRITICAL TAPED SEAMS
- ARTICULATED KNEES
- ADJUSTABLE WAIST TABS
- REINFORCED KNEE AND SEAT
- LEG SNOW CUFFS
- OXFORD REINFORCED CUFFS
- DWR COATING

COLORS:

1. BLACK
2. DUCK BROWN
3. GUNMETAL

**RIDER PANT 2.0****119**

INSULATED RELAXED FIT PANT

FABRIC:

+ PLUS SIZE AVAILABLE

• 10K WPB TECH STRETCH POLYESTER

FEATURES:

- DWR COATING
- CRITICAL TAPED SEAMS
- TAPED SEAMS
- REMOVABLE SUSPENDERS
- ADJUSTABLE WAIST
- LEG VENTS
- ZIPPERED POCKETS
- LEG SNOW PUFFS
- CARGO POCKET
- OXFORD REINFORCED CUFF

COLORS:

1. BLACK
2. EGGPLANT
3. SPUCE GREEN
4. BLUE DUSK
5. STONE
6. NAVY ACID
7. WHITE

**FLOW SHELL PANT****185**

LINED FREEDOM FIT SHELL PANT

FABRIC:

+ PLUS SIZE AVAILABLE

• 10K WPB 400D POLY OXFORD

FEATURES:

- DWR COATING
- CRITICAL TAPED SEAMS
- ARTICULATED KNEES
- WATER-TIGHT ZIPPERED POCKETS
- LEG VENTS
- LEG SNOW CUFFS
- OXFORD REINFORCED CUFF

COLORS:

1. BLACK
2. CAVIAR
3. DARK KHAKI
4. BLUE DUSK
5. OLIVE
6. CAMO



THOR INSULATED PANT 195

INSULATED FREEDOM FIT PANT

FABRIC: **+ PLUS SIZE AVAILABLE**

- 10K WPB MECHANIC STRETCH TWILL

FEATURES:

- DWR COATING
- CRITICAL TAPED SEAMS
- ARTICULATED KNEES
- WATER-TIGHT ZIPPERED LEG POCKETS
- LEG VENTS
- LEG SNOW CUFFS
- OXFORD REINFORCED CUFF

COLORS:

1. BLACK
2. CAVIAR
3. SPRUCE
4. EGGPLANT
5. STONE
6. BOURBON

DOOM PANT 1195

REGULAR FIT INSULATED PANT

FABRIC: **+ PLUS SIZE AVAILABLE**

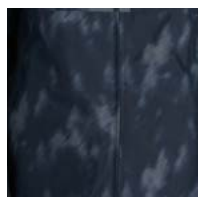
- 10K STRETCH POLYESTER

FEATURES:

- DWR TREATMENT
- TAPED SEAMS
- LEG VENTS
- ADJUSTABLE WAIST
- ZIPPERED BOOT GUSSET
- DEEP CARGO POCKETS
- HAND POCKETS

COLORS:

1. STONE
2. GUN METAL
3. OLIVE

**STATEMENT PANT****1196**

PRINTED INSULATED SNOW PANT

FABRIC:**+ PLUS SIZE AVAILABLE**

- 10K WPB.320D POLY

FEATURES:

- CRITICAL TAPED SEAMS
- TRICOT FLEECE LINED
- LEG VENTS
- LEG SNOW CUFFS
- DWR COATING
- REINFORCED CROTCH
- ADJUSTABLE WAIST

COLORS:

1. BLACK ACID
2. WHITE ACID
3. OD CAMO

**THE DUNGAREE****1191**

INSULATED SNOW COVERALL

FABRIC:**+ PLUS SIZE AVAILABLE**

- W.P.B. 5K 400D POLY OXFORD

FEATURES:

- DWR COATING
- CRITICAL TAPED SEAMS
- ARTICULATED KNEES
- ADJUSTABLE ELASTIC SUSPENDERS
- LEG VENTS
- LEG SNOW CUFFS
- UTILITY PATCH POCKET

COLORS:

1. BLACK
2. STEEL BLUE
3. TARMAC

4. SCOUT GREEN

**DOOM BIB****1194**

REGULAR FIT INSULATED BIB

FABRIC:**+ PLUS SIZE AVAILABLE**

- 10K W.P.B. TECH STRETCH POLYESTER

FEATURES:

- DWR COATING
- CRITICAL TAPED SEAMS
- ADJUSTABLE ELASTIC SUSPENDERS
- LEG VENTS
- ZIPPERED LEG OPENING
- SNAP & ZIPPER SIDE OPEN
- CHEST POCKET

COLORS:

1. BLACK
2. GUN METAL
3. BOURBON

4. SCOUT GREEN

Womens





GRACE 2200

INSULATED JACKET

FABRIC:

- 10K WPB POLYESTER 300D OXFORD

+ PLUS SIZE AVAILABLE

FEATURES:

- DWR COATING
- CRITICAL TAPED SEAMS
- PIT ZIPS
- TECH SNOWSKIRT
- THERMAL MESH LINING
- NINJA CUFFS
- INSULATED HOOD
- AUDIO POCKET
- GOGGLE POCKET
- REMOVABLE FUR TRIMS

COLORS:

1. BLACK
2. PALE AQUA
3. MERLOT

JASMIN 2201

INSULATED JACKET

FABRIC:

- 10K WPB POLYESTER TWILL

+ PLUS SIZE AVAILABLE

FEATURES:

- DWR COATING
- CRITICAL TAPED SEAMS
- PIT ZIPS
- TECH SNOWSKIRT
- THERMAL MESH LINING
- NINJA CUFFS
- INSULATED HOOD
- AUDIO POCKET
- GOGGLE POCKET
- CINCH WAIST CORD
- BERBER LINED HOOD

COLORS:

1. BLACK CAMO
2. WHITE CAMO
3. TARMAC

ARIES 2202

INSULATED BOARD JACKET

FABRIC:

- 10K WPB 300D POLY DENIM TWILL

+ PLUS SIZE AVAILABLE

FEATURES:

- DWR COATING
- CRITICAL TAPED SEAMS
- PLUSH LINED COLLAR
- PLUSH LINED BODY
- PIT ZIPS
- TECH SNOWSKIRT
- NINJA CUFFS
- INSULATED HOOD
- AUDIO POCKET
- GOGGLE POCKET

COLORS:

1. BLACK DENIM
2. BLUE DENIM
3. WHITE DENIM



SLOW FADE **2203**

 INSULATED BOARD JACKET

FABRIC: **+ PLUS SIZE AVAILABLE**

- 10K WPB POLYESTER TECH STRETCH

FEATURES:

- DWR COATING
- CRITICAL TAPED SEAMS
- PIT ZIPS
- TECH SNOWSKIRT
- THERMAL MESH LINING
- NINJA CUFFS
- INSULATED HOOD
- ZIPPERED CHEST POCKET
- AUDIO POCKET
- GOGGLE POCKET

COLORS:

1. PINK FADE
2. ALLURE BLUE
3. ASSORTED

SAGA **2204**

 INSULATED BOARD JACKET

FABRIC: **+ PLUS SIZE AVAILABLE**

- 10K WPB POLYESTER TWILL

FEATURES:

- DWR COATING
- CRITICAL TAPED SEAMS
- PIT ZIPS
- TECH SNOWSKIRT
- THERMAL MESH LINING
- NINJA CUFFS
- INSULATED HOOD
- ZIPPERED HAND POCKET
- AUDIO POCKET
- GOGGLE POCKET

COLORS:

1. PINK INK
2. PURPLE INK
3. ASSORTED



BROOKLYN **2205**

INSULATED BOARD JACKET

FABRIC: **+ PLUS SIZE AVAILABLE**

- 10K WPB POLYESTER TWILL

FEATURES:

- DWR COATING
- CRITICAL TAPED SEAMS
- PIT ZIPS
- TECH SNOWSKIRT
- THERMAL MESH LINING
- NINJA CUFFS
- INSULATED HOOD
- AUDIO POCKET
- GOGGLE POCKET

COLORS:

1. BLACK
2. WHITE
3. ROSECLAY



SOCIETE 2.0 **2206**

INSULATED PARKA

FABRIC: **+ PLUS SIZE AVAILABLE**

- 10K WPB POLYESTER DOBBY

FEATURES:

- DWR COATING
- CRITICAL TAPED SEAMS
- PIT ZIPS
- TECH SNOWSKIRT
- THERMAL MESH LINING
- NINJA CUFFS
- INSULATED HOOD
- AUDIO POCKET
- GOGGLE POCKET
- REMOVABLE FAUX FUR TRIM

COLORS:

1. BLACK
2. CINNAMON
3. SAGE



NOBLE **2207**

INSULATED JACKET

FABRIC: **+ PLUS SIZE AVAILABLE**

- 10K WPB NYLON

FEATURES:

- DWR COATING
- CRITICAL TAPED SEAMS
- PIT ZIPS
- TECH SNOWSKIRT
- THERMAL MESH LINING
- NINJA CUFFS
- DRAW CORD WAIST
- REMOVABLE FAUX FUR TRIM
- AUDIO POCKET
- GOGGLE POCKET

COLORS:

1. BLACK / BLACK
2. BLACK / WHITE
3. WHITE / TAUPE



COSMOS 2209

INSULATED JACKET

FABRIC: **+ PLUS SIZE AVAILABLE**

- 10K WPB 150D POLYESTER

FEATURES:

- DWR COATING
- CRITICAL TAPED SEAMS
- PIT ZIPS
- TECH SNOWSKIRT
- THERMAL MESH LINING
- NINJA CUFFS
- INSULATED HOOD
- AUDIO POCKET
- GOGGLE POCKET
- ZIPPERED CHEST POCKET

COLORS:

1. GREEN STONE
2. WHITE STONE
3. ASSORTED

HERITAGE 2208

INSULATED BOARD JACKET

FABRIC: **+ PLUS SIZE AVAILABLE**

- 10K WPB POLYESTER TASLON

FEATURES:

- DWR COATING
- CRITICAL TAPED SEAMS
- PIT ZIPS
- TECH SNOWSKIRT
- THERMAL MESH LINING
- NINJA CUFFS
- FLANNEL LINED HOOD
- ZIPPERED CHEST POCKET
- AUDIO POCKET
- GOGGLE POCKET

COLORS:

1. BLACK
2. TAWNY ROSE
3. EARTHSTONE
4. SEAFOAM

SWISS SYSTEMS 2211

3-IN-1 SYSTEM JACKET

FABRIC: **+ PLUS SIZE AVAILABLE**

- 10K WPB POLY TWILL / LINER : 400T POLY

FEATURES:

- DWR COATING
- CRITICAL TAPED SEAM
- REMOVABLE SYNTHETIC DOWN LINER
- PIT ZIPS
- TECH SNOWSKIRT
- THERMAL MESH LINING
- REMOVABLE HOOD
- ADJUSTABLE CUFFS
- CHEST POCKET
- GOGGLE POCKET
- AUDIO POCKET

COLORS:

1. BLACK / WHITE MARBLE LINER
2. WINTER BLUE / LIGHT BLUE LINER
3. GRAPE / LIGHT GRAPE LINER



SUGARCOAT **2240**

INSULATED BOARD JACKET

FABRIC: **+ PLUS SIZE AVAILABLE**

- 10K WPB 150D MELANGE POLYESTER TWILL

FEATURES:

- DWR COATING
- CRITICAL TAPED SEAMS
- PIT ZIPS
- TECH SNOWSKIRT
- THERMAL MESH LINING
- NINJA CUFFS
- INSULATED HOOD
- AUDIO POCKET
- GOGGLE POCKET
- CHEST POCKET

COLORS:

1. HONEYDEW
2. MINT
3. METAL BLUE



ASPENS CALLING **2241**

INSULATED JACKET

FABRIC: **+ PLUS SIZE AVAILABLE**

- WP POLY TWILL

FEATURES:

- DWR COATING
- PIT ZIPS
- TECH SNOWSKIRT
- NINJA CUFF
- REMOVABLE INSULATED HOOD
- REMOVABLE FAUX FUR TRIM
- AUDIO POCKET
- THERMAL MESH LINING

COLORS:

1. BLACK
2. WHITE
3. GREY PEBBLE
4. MAGENTA
5. BLUE DUSK





ELATION **2213**

INSULATED HOODED VEST

FABRIC: **+ PLUS SIZE AVAILABLE**

- 400T NYLON

FEATURES:

- SYNTHETIC DOWN FILL
- DWR COATING
- MID LENGTH FIT
- ADJUSTABLE HOOD
- ELASTIC ARM HOLE
- HAND ZIPPERED POCKETS
- FULL FRONT ZIP

COLORS:

- 1. BLACK
- 2. MAGENTA
- 3. SAGE
- 4. BLACK CHERRY
- 5. BURLY CAMO
- 6. BOTTOMLAND

TEMPO **2214**

INSULATED VEST

FABRIC: **+ PLUS SIZE AVAILABLE**

- 400T NYLON

FEATURES:

- SYNTHETIC DOWN FILL
- DWR COATING
- ELASTIC ARM HOLE
- HAND ZIPPERED POCKETS
- FULL FRONT ZIP

COLORS:

- 1. BLACK
- 2. GREEN
- 3. EGGSHELL
- 4. MAUVE
- 5. BLACK CURRANT

LEGION VEST **2215**

INSULATED EXTRA LONG VEST

FABRIC: **+ PLUS SIZE AVAILABLE**

- 300T POLYESTER

FEATURES:

- SYNTHETIC INSULATION
- EXTRA LONG DESIGN
- DIAMOND QUILTED DESIGN
- 2 ZIPPERED POCKETS
- 2 WAY CENTER FRONT ZIPPER
- LONG TAIL WITH GUSSET

COLORS:

- 1. BLACK
- 2. SEAFOAM
- 3. MAUVE
- 4. BLACK CURRANT

**HUNINGTON****2216**

INSULATED LONG HOODED VEST

FABRIC:**+ PLUS SIZE AVAILABLE**

- PEACHED POLYESTER

FEATURES:

- SYNTHETIC INSULATION
- 33.5" LENGTH
- FRONT WELT POCKETS
- ZIPPER & STORM FLAP
- INSULATED HOOD
- HOOD DRAWCORD

COLORS:

1. BLACK
2. OLIVE
3. ASSORTED

**ENCINA****2217**

SHERPA LINED VEST

FABRIC:**+ PLUS SIZE AVAILABLE**

- COTTON POLYESTER TWILL

FEATURES:

- "WAXED" LOOK
- SHERPA LINING
- ZIPPERED POCKETS
- ZIPPER & STORM FLAP

COLORS:

1. DUCK / BLUE
2. BLUE / DUCK
3. GRENACHE
4. SAGE

**CARACOL VEST****2250**

INSULATED TUNIC VEST

FABRIC:**+ PLUS SIZE AVAILABLE**

- 380T NYLON

FEATURES:

- SYNTHETIC DOWN FILL
- DWR COATING
- 2 WAY ZIPPER
- ZIPPERED HAND POCKETS
- INTERIOR STOW POCKET
- TRICOT LINER COLLAR

COLORS:

1. BLACK
2. CORAL CLAY
3. DOVE GREY



PRISTINE PUFFER 2218

SYNTHETIC MID LAYER JACKET

FABRIC: **+ PLUS SIZE AVAILABLE**

- 300T POLYESTER

FEATURES:

- SYNTHETIC DOWN INSULATION
- DWR COATED
- ZIPPERED POCKETS
- BACK DROP HEM
- INTERNAL STORM FLAP

COLORS:

1. BLACK
2. DEEP LICHEN GREEN
3. BLACK CURRANT



MARIE 2219

CROPPED INSULATED HOODIE

FABRIC: **+ PLUS SIZE AVAILABLE**

- 300T POLYESTER

FEATURES:

- DWR TREATMENT
- SYNTHETIC DOWN FILL
- CUTE CROPPED FIT
- INSULATED HOOD
- INNER STOW POCKET
- ZIPPERED HAND POCKETS
- HOOD DRAWCORD

COLORS:

1. BLACK
2. OLIVE
3. CINNAMON PEACHED



ARTICA 2220

INSULATED BOMBER COAT

FABRIC: **+ PLUS SIZE AVAILABLE**

- TECH STRETCH POLYESTER TWILL

FEATURES:

- SYNTHETIC DOWN INSULATION
- WATER PROOF BREATHABLE SHELL
- DWR COATED
- REMOVABLE FAUX FUR TRIM
- DUAL ENTRY POCKETS
- RIBBED CUFF & HEM
- INSULATED HOOD

COLORS:

1. BLACK
2. SEAGREEN
3. ASSORTED



PEEK PUFFER **2221**

INSULATED MIDLAYER HOODED JACKET

FABRIC: **+ PLUS SIZE AVAILABLE**

- 300T POLYESTER

FEATURES:

- SYNTHETIC DOWN INSULATION
- DWR COATED
- PLUSH LINED COLLAR & HOOD
- ZIPPERED POCKETS
- INTERIOR STOW POCKET
- DROP TAIL BACK HEM

COLORS:

1. BLACK
2. OLIVE
3. MAUVE
4. BLACK CURRANT

ELEMENT **2222**

HYBRID SHERPA INSULATED JACKET

FABRIC: **+ PLUS SIZE AVAILABLE**

- 300T POLYESTER/SHERPA

FEATURES:

- SYNTHETIC DOWN INSULATION
- WATER-RESISTANT COATING
- ZIPPERED POCKETS
- INTERIOR STOW POCKET
- ELASTIC CUFFS
- ADJUSTABLE HEM

COLORS:

1. BLACK
2. DARK BLACK CHERRY
3. ASSORTED

SAVOY **2223**

FUNNEL NECK PUFFER JACKET

FABRIC: **+ PLUS SIZE AVAILABLE**

- 300T POLYESTER

FEATURES:

- SYNTHETIC DOWN FILL
- DWR COATING
- MID LENGTH FIT
- 2 WAY ZIPPER
- ZIPPERED POCKETS
- RAISED INSULATED COLLAR

COLORS:

1. BLACK
2. IVORY
3. WINTER BLUE



SHADOW PARKA

2239

INSULATED KNEE LENGTH WINTER COAT

FABRIC:

- 50D POLYESTER PONGEE

+ PLUS SIZE AVAILABLE

FEATURES:

- SYNTHETIC DOWN FILL
- DWR TREATMENT
- MID LENGTH FIT
- 2 WAY ZIPPER
- ZIPPER HAND POCKETS
- INSULATED HOOD
- RIBBED SNOW CUFF
- ADJUSTABLE DRAWCORD

COLORS:

1. RUST SHADOW
2. HONEY SHADOW
3. ASSORTED



AXTELL

2224

PLUSH FLEECE LINED PARKA

FABRIC:

- 300T POLYESTER

+ PLUS SIZE AVAILABLE

FEATURES:

- SYNTHETIC DOWN FILL
- DWR TREATMENT
- MID LENGTH FIT
- 2 WAY ZIPPER
- ZIPPERED POCKETS
- RAISED INSULATED COLLAR
- RIBBED SNOW CUFFS
- REMOVABLE FAUX FUR TRIM
- INSULATED HOOD

COLORS:

1. BLACK
2. DEEP LAGOON
3. CINNAMON



LEAVENWORTH

2225

ULTRALIGHT PACKABLE LONG PARKA

FABRIC:

- 300T POLYESTER

FEATURES:

- SYNTHETIC DOWN FILL
- DWR TREATMENT
- MID LENGTH FIT
- 2 WAY ZIPPER
- ZIPPERED POCKETS
- RAISED INSULATED COLLAR
- INSULATED HOOD

COLORS:

1. BLACK
2. STEEL BLUE
3. MAUVE
4. TEAL SHADOW



BRICKLAYER III

2253

QUILTED SYNTHETIC HOODIE

FABRIC:

- 400T POLYESTER

+ PLUS SIZE AVAILABLE

FEATURES:

- DWR TREATMENT
- SYNTHETIC DOWN FILL
- INSULATED HOOD
- ELASTIC HEM CUFFS

- ZIPPERED POCKETS

COLORS:

1. BLACK
2. MAUVE
3. BLACK CURRANT
4. DEEP LAGOON
5. MOSSY OAK
6. BURLY CAMO

SOLSTICE

2235

HYBRID THERMAL JACKET

FABRIC:

- TECH STRETCH POLYESTER WOVEN & KNIT FLEECE

+ PLUS SIZE AVAILABLE

FEATURES:

- STRETCH PANELS
- SYNTHETIC DOWN FILL
- INSULATED HOOD
- ADJUSTABLE HOOD

- ZIPPERED POCKETS
- KNIT INNER CUFFS
- INNER STOW POCKET

COLORS:

1. INDIGO / WHITE
2. MAUVE / WHITE
3. ASSORTED



LAVISH **2230**
CORDUROY PUFFER

FABRIC: **+ PLUS SIZE AVAILABLE**

- DWR POLYESTER CORDUROY

FEATURES:

- SYNTHETIC DOWN FILL
- INSULATED HOOD
- ADJUSTABLE HOOD
- ZIPPER & STORM FLAP
- DUAL ENTRY POCKET
- ELASTIC HEM CUFF

COLORS:

1. BLACK
2. GOLD
3. ASSORTED



POWDERDOWN **2231**
PACKABLE 90/10 DUCK DOWN JACKET

FABRIC: **+ PLUS SIZE AVAILABLE**

- 400T NYLON SHELL

FEATURES:

- 90/10 DUCK DOWN FILL
- DWR COATING
- WATER REPELLENT
- DOWN PROOF CONSTRUCTION
- 75 GRAM FILL WEIGHT
- LIGHTWEIGHT
- ZIPPERED POCKETS
- PACKABLE INTO POCKET

COLORS:

1. BLACK
2. BLACK CURRANT / CINNAMON
3. DEEP LAGOON / LAGOON
4. URBAN GREEN
5. MARBLE
6. GREEN STONE
7. FLOWER PRINT



HOODED POWDERDOWN **2231-HD**
PACKABLE 90/10 DUCK DOWN JACKET

FABRIC: **+ PLUS SIZE AVAILABLE**

- 400T NYLON SHELL

FEATURES:

- 90/10 DUCK DOWN FILL
- DWR COATING
- WATER REPELLENT
- DOWN PROOF CONSTRUCTION
- 75 GRAM FILL WEIGHT
- LIGHTWEIGHT
- ZIPPERED POCKETS
- PACKABLE INTO POCKET

COLORS:

1. BLACK
2. BLACK CURRANT / CINNAMON
3. DEEP LAGOON / LAGOON
4. URBAN GREEN
5. MARBLE
6. GREEN STONE
7. FLOWER PRINT



ECO POWDERDOWN OPTION 2231-SD

SYNTHETIC DOWN JACKET

FABRIC:

- 400T NYLON SHELL

+ PLUS SIZE AVAILABLE

FEATURES:

- SYNTHETIC DOWN FILL
- DWR TREATMENT
- MID LENGTH FIT
- 2 WAY ZIPPER
- ZIPPERED POCKETS
- RAISED INSULATED COLLAR

COLORS:

1. PEARL
2. METALLIC BLACK CURRANT
3. METALLIC SLATE
4. UNICORN

POWDERDOWN VEST 2232

PACKABLE 90/10 DUCK DOWN VEST

FABRIC:

- 400T NYLON SHELL

+ PLUS SIZE AVAILABLE

FEATURES:

- 90/10 DUCK DOWN FILL
- WATER REPELLENT
- DOWN PROOF CONSTRUCTION
- 55 GRAM FILL WEIGHT
- PACKABLE INTO POCKET
- ZIPPERED POCKETS
- LIGHTWEIGHT

COLORS:

1. BLACK
2. BLACK CURRANT / CINNAMON
3. DEEP LAGOON / LAGOON
4. URBAN GREEN
5. MARBLE
6. GREEN STONE
7. FLOWER PRINT

LUNA 2233

INSULATED SYNTHETIC DOWN JACKET

FABRIC:

- 300T SOFT POLYESTER

+ PLUS SIZE AVAILABLE

FEATURES:

- DWR TREATMENT
- SYNTHETIC DOWN FILL
- INSULATED HOOD
- ZIPPERED POCKETS
- REMOVABLE FAUX FUR TRIM

COLORS:

1. BLACK
2. GREEN
3. WHITE
4. BLACK CURRANT
5. BLUE POPPY



CLASSIC SOFT SHELL 2228

FULL ZIP SOFT SHELL JACKET

FABRIC: **+ PLUS SIZE AVAILABLE**

- WP 8K 3 LAYER POLY / SPANDEX

FEATURES:

- 3 LAYER CONSTRUCTION
- STRETCH FABRIC
- D.W.R. TREATMENT
- MICRO FLEECE BONDED
- WIND AND WATER RESISTANT
- ZIPPERED POCKETS
- ADJUSTABLE CUFFS

COLORS:

- 1. BLACK
- 2. WHITE
- 3. DEEP LAGOON
- 4. MERLOT
- 5. CHESTNUT
- 6. BLUE CAMO
- 7. GREY CAMO

SOFT SHELL VEST 2229

FULL ZIP SOFT SHELL VEST

FABRIC: **+ PLUS SIZE AVAILABLE**

- WP 8K 3 LAYER POLY / SPANDEX

FEATURES:

- 3 LAYER CONSTRUCTION
- STRETCH FABRIC
- D.W.R. TREATMENT
- MICRO FLEECE BONDED
- WIND AND WATER RESISTANT
- ZIPPERED POCKETS

COLORS:

- 1. BLACK
- 2. WHITE
- 3. DEEP LAGOON
- 4. MERLOT
- 5. CHESTNUT
- 6. BLUE CAMO
- 7. GREY CAMO

**VENUS****2227****HOODED SOFT SHELL JACKET****FABRIC:**

- WPB 8K FLEECE BONDED POLYESTER

+ PLUS SIZE AVAILABLE**FEATURES:**

- 3 LAYER CONSTRUCTION
- STRETCH FABRIC
- D.W.R. TREATMENT
- MICRO FLEECE BONDED
- WIND AND WATER RESISTANT
- ZIPPERED POCKETS
- ADJUSTABLE CUFFS

COLORS:

1. BLACK
2. WHITE
3. MERLOT
4. LAGOON
5. CHESTNUT
6. BLUE CAMO
7. GREY CAMO

STOWE**2226****MID LENGTH SOFT SHELL COAT****FABRIC:**

- WPB 8K FLEECE BONDED POLYESTER

+ PLUS SIZE AVAILABLE**FEATURES:**

- DWR COATING
- SHERPA FLEECE BONDED
- WIND AND WATER RESISTANT
- ELASTIC CUFFS
- ZIPPERED POCKETS
- 2 WAY CENTER FRONT ZIPPER
- SHERPA LINED HOOD

COLORS:

1. BLACK
2. WHITE
3. MERLOT



PALOMA FLEECE NS-1316
PLUSH LINED HOODED SWEATER

FABRIC: **+ PLUS SIZE AVAILABLE**

- POLYESTER

FEATURES:

- NON-PILLING
- PLUSH LINING
- MACHINE WASHABLE
- ZIPPERED POCKETS
- ADJUSTABLE HOOD

COLORS:

1. BLACK
2. NAVY
3. OAT
4. ROSE

STUNNER FLEECE NS-1317
SHERPA LINED SWEATER HOODIE

FABRIC: **+ PLUS SIZE AVAILABLE**

- POLYESTER

FEATURES:

- NON-PILLING
- SHERPA LINING
- RIBBED CUFF POCKETS
- RIB HEM AND CUFFS
- ADJUSTABLE HOOD

COLORS:

1. HEATHER GREY
2. SAGE
3. BLACK CHERRY

INSPIRE FLEECE 2345
BERBER HOODIE

FABRIC: **+ PLUS SIZE AVAILABLE**

- 200 GSM POLYESTER

FEATURES:

- NON-PILLING BERBER
- SOFTSHELL SHOULDERS
- ZIPPERED HAND POCKETS
- ADJUSTABLE HOOD
- ELASTIC CUFF AND HEM

COLORS:

1. STONE / NAVY / BLACK CURRANT
2. STONE / AMBER / BLACK CURRANT

**PALOMAR****2347****SWEATER FLEECE HOODED JACKET****FABRIC:****+ PLUS SIZE AVAILABLE**

- 2 TONE KNIT POLYESTER

FEATURES:

- FULL ZIP CLOSURE
- 2 SIDE POCKETS
- ATTACHED HOOD
- LIGHT WEIGHT
- ADJUSTABLE DRAW CORD

COLORS:

1. HEATHER GREY
2. OAT
3. ROSE

**INSPIRE VEST****2346****BERBER HOOD FALL ZIP VEST****FABRIC:****+ PLUS SIZE AVAILABLE**

- 200 GSM POLYESTER

FEATURES:

- NON PILL BERBER FLEECE
- QUILTED OVERLAY
- TASLON TRIM WITH QUILTED
- HAND POCKETS
- BROPTAIL HEM
- ADJUSTABLE DRAWCORD
- ZIPPER FRONT CLOSURE

COLORS:

1. BLACK
2. STONE
3. BLACK CURRENT / BLACK CHERRY

**ODESSA QUILT****2350****INSULATED JACKET****FABRIC:****+ PLUS SIZE AVAILABLE**

- POLYESTER/ ELASTANE

FEATURES:

- LIGHTWEIGHT RELAXED FIT
- INSULATED QUILTED
- 4 WAY STRETCH
- FULL ZIP
- HAND POCKET
- ELASTIC CUFF AND HEM

COLORS:

1. BLACK
2. SEA GREEN
3. HAZEL



KENSINGTON 2348

MICROFLEECE SWEATER

FABRIC: **+ PLUS SIZE AVAILABLE**

- POLYESTER 2-TONE SWEATER FLEECE

FEATURES:

- NON-PILLING
- 2-TONE MELANGE FABRIC
- OVERSIZE COLLAR
- SNAP SIDE PANELS
- LOOSE FIT

COLORS:

1. BLACK
2. HEATHER GREY
3. ROSE



SHARP SHERPA NS-1309

BERBER FLEECE POLYESTER / RIPSTOP

FABRIC: POLYESTER 2-TONE SWEATER FLEECE

- POLYESTER 2-TONE SWEATER FLEECE

FEATURES:

- NON-PILLING
- BONDED SHERPA
- FLEECE LINED
- ZIPPERED CHEST POCKET
- HAND POCKETS

COLORS:

1. BLACK
2. SAGE
3. CREAM



BIRDEYE SNAP PULLOVER 2342

SNAP PULLOVER BERBER FLEECE

FABRIC: **+ PLUS SIZE AVAILABLE**

- MICRO BERBER / JERSEY LINED

FEATURES:

- 2 ZIPPERED HAND POCKETS
- ELASTIC CUFF BINDING
- NON-PILLING
- MACHINE WASHABLE
- CHEST POCKET
- SNAP 1/4 CLOSURE

COLORS:

1. BLACK
2. STONE
3. BLACK CURRANT
4. CHARCOAL
5. DUSTY PINK
6. TAN HERITAGE
7. CHARCOAL HERITAGE

**LAUREL****NS-1311****SHERPA 1/4 ZIP PULLOVER****FABRIC:**

- 260G POLYESTER SHERPA

+ PLUS SIZE AVAILABLE**FEATURES:**

- JERSEY BACKING
- HIGH RISE COLLAR
- ELASTIC CUFF BINDING
- DRAWCORD HEM
- OVERSIZE COMFY FIT

COLORS:

1. RED PLAID
2. BLACK WAVE
3. BEIGE AZTEC
4. TEAL TREE
5. YELLOW LEAF
6. BLUE NATIVE

LODGE FLEECE**NS-1585****PLUSH CORAL FLEECE JACKET****FABRIC:**

- 350G POLYESTER

+ PLUS SIZE AVAILABLE**FEATURES:**

- FULL ZIP WITH DRAFT FLAP
- ELASTIC CUFF
- ELASTIC HEM
- NON PILL
- ZIPPERED HAND POCKETS

COLORS:

1. BLACK
2. WHITE
3. BLACK CURRANT

LODGE PULLOVER**NS-1584****1/4-ZIP FLEECE PULLOVER****FABRIC:**

- MICRO BERBER

+ PLUS SIZE AVAILABLE**FEATURES:**

- NON PILLING
- MACHINE WASHABLE
- 1/4 ZIP CLOSURE

COLORS:

1. MINERAL GREEN
2. LILAC
3. DEMIN



FIRESIDE FLANNEL FLW-405

FAUX WOOL SHIRT JACKET

FABRIC: **+ PLUS SIZE AVAILABLE**

- NON PILL BRUSHED POLYESTER

FEATURES:

- SNAP FRONT CLOSURE
- SNAP CHEST POCKETS
- BRUSHED SHELL FABRIC
- NON-PILLING
- MACHINE WASHABLE

COLORS:

1. GREY
2. TAUPE PLAID
3. ASSORTED

FOREVER FLW-408

LINED FLANNEL SHIRT JACKET

FABRIC: **+ PLUS SIZE AVAILABLE**

- NON PILL BRUSHED POLYESTER

FEATURES:

- SOFT FLANNEL SHELL
- SNAP FRONT CLOSURE
- FLEECE LINED BODY
- NON-PILLING
- DOUBLE CHEST POCKET
- 2 SIDE HAND POCKET
- WAIST TAB SNAP

COLORS:

1. GREY
2. ORANGE PLAID
3. WINE PLAID



CHECKS FLEECE

NS-1583

1/4 ZIP PRINTED FLEECE

FABRIC:

- 200G POLYESTER

+ PLUS SIZE AVAILABLE

FEATURES:

- NON-PILLING
- MACHINE WASHABLE
- 1/4 ZIPPER CLOSURE
- LIGHT WEIGHT & LOFTY
- RELAX CUFF AND HEM

COLORS:

1. BLUE CHECK
2. PALE PINK CHECK
3. GREY CHECK

KNIT FLANNEL

FLW-401

BRUSHED KNIT STRETCH FLANNEL SHIRT

FABRIC:

- POLYESTER

+ PLUS SIZE AVAILABLE

FEATURES:

- NON-PILLING
- SOFT HAND FEEL SHELL
- LIGHTWEIGHT
- BUTTON FRONT CLOSURE

COLORS:

1. GREY
2. BLUE PLAID
3. BLACK PLAID
4. DENIM

TRUCKEE

FLW-410

FLANNEL WORK JACKET

FABRIC:

- POLYESTER FLANNEL BONDED FLEECE

+ PLUS SIZE AVAILABLE

FEATURES:

- SOFT HAND FEEL SHELL
- FLEECE LINED BODY
- SNAP FRONT CLOSURE
- DOUBLE CHEST POCKET
- SIDE HAND POCKETS
- NON-PILLING
- MACHINE WASHABLE
- SHERPA COLLAR

COLORS:

1. RUST
2. BEIGE
3. GREY



YUCCA FLW-AZT

AZTEC PRINT SHIRT JACKET

FABRIC: POLYESTER **+ PLUS SIZE AVAILABLE**

- POLYESTER

FEATURES:

- NON PILLING
- CHEST POCKETS
- HAND POCKETS

COLORS:

1. TEAL/ROSE
2. CORAL/GREY
3. BLUE/GREY

TASLON FLEECE NS-1300

HYBRID FLEECE TASLON JACKET

FABRIC: POLYESTER TASLON WITH FLEECE **+ PLUS SIZE AVAILABLE**

- POLYESTER TASLON WITH FLEECE

FEATURES:

- DWR TASLON TOP
- ZIPPERED CHEST POCKET
- SIDE HAND POCKET
- FULL ZIP FRONT CLOSURE

COLORS:

1. CHARCOAL / HEATHER GREY
2. ROBIN BLUE / PALE PINK
3. SAGE / STONE

HILLTOP FULL ZIP NS-1325

FULL ZIP MICRO FLEECE JACKET

FABRIC: POLYESTER FLEECE **+ PLUS SIZE AVAILABLE**

- POLYESTER FLEECE

FEATURES:

- ANTI PILLING
- MACHINE WASHABLE
- LIGHT WEIGHT & LOFTY
- ZIPPERED POCKETS
- ZIPPERED FRONT CLOSURE

COLORS:

1. BLACK
2. HEATHER GREY
3. PEACOCK
4. WHITE TIGER
5. PALE PINK



FLEECE FULL ZIP **NS-1588**

FULL ZIP FLEECE JACKET

FABRIC: **+ PLUS SIZE AVAILABLE**

- 300 GRAM NON PILL POLYESTER

FEATURES:

- SIDE POCKETS
- NON-PILLING
- MACHINE WASHABLE
- SOFT HAND FEEL

COLORS:

1. BLACK
2. LAGOON
3. RUBY
4. WHITE
5. HEATHER GREY

FLEECE HOODIE **NS-1582**

FULL ZIP FLEECE HOODED JACKET

FABRIC: **+ PLUS SIZE AVAILABLE**

- 300 GRAM NON PILL POLYESTER

FEATURES:

- SIDE POCKETS
- NON-PILLING
- MACHINE WASHABLE
- SOFT HAND FEEL
- 3 PANEL HOOD

COLORS:

1. BLACK
2. LAGOON
3. RUBY
4. WHITE
5. HEATHER GREY

CLASSIC FLEECE VEST **NS-1587**

FULL ZIP FLEECE VEST

FABRIC: **+ PLUS SIZE AVAILABLE**

- 300 GRAM NON PILL POLYESTER

FEATURES:

- SIDE POCKETS
- NON-PILLING
- MACHINE WASHABLE
- SOFT HAND FEEL

COLORS:

1. BLACK
2. LAGOON
3. RUBY
4. WHITE
5. HEATHER GREY



THERMAL TOP **PF-592-F**
BASE LAYER PULLOVER

FABRIC: **+ PLUS SIZE AVAILABLE**

- POLY STRETCH KNIT

FEATURES:

- WICKING
- COMFORT STRETCH
- ANTI PILL
- BRUSH LINED
- POP PACKAGING

COLORS:

1. BLACK



THERMAL BOTTOM **PF-590-F**
BASE LAYER PULLOVER

FABRIC: **+ PLUS SIZE AVAILABLE**

- POLY STRETCH KNIT

FEATURES:

- WICKING
- COMFORT STRETCH
- ANTI PILL
- BRUSH LINED
- POP PACKAGING

COLORS:

1. BLACK



AURA PANT **NS-1329**
JOGGER PANT

FABRIC: **+ PLUS SIZE AVAILABLE**

- POLYESTER COTTON SPANDEX

FEATURES:

- NON-PILLING
- SOFT & LIGHTWEIGHT
- HAND POCKETS
- ELASTIC WAIST
- ADJUSTABLE DRAWCORD
- JOGGER BOTTOM

COLORS:

1. BLACK
2. DRIFTWOOD
3. JEWEL GREEN
4. IVORY



AURA-OVERSIZE **NS-1324**
PULLOVER CREWNECK SWEATER

FABRIC: **+ PLUS SIZE AVAILABLE**

- POLYESTER COTTON SPANDEX

FEATURES:

- NON-PILLING
- SOFT AND LIGHTWEIGHT
- SPANDEX CUFF
- RELAXED FIT HEM OPENING

COLORS:

1. BLACK
2. DRIFTWOOD
3. JEWEL GREEN
4. IVORY



AURA COWL NECK **NS-1327**
TWISTED NECK SWEATSHIRT

FABRIC: **+ PLUS SIZE AVAILABLE**

- POLYESTER COTTON SPANDEX

FEATURES:

- NON-PILLING
- SOFT AND LIGHTWEIGHT
- NINJA CUFF
- OVERSIZE COLLAR

COLORS:

1. BLACK
2. DRIFTWOOD
3. JEWEL GREEN
4. IVORY



AURA FULL ZIP **NS-1328**
FULL ZIP HOODIE SWEATSHIRT

FABRIC: **+ PLUS SIZE AVAILABLE**

- POLYESTER COTTON SPANDEX

FEATURES:

- NON-PILLING
- SOFT AND LIGHTWEIGHT
- NINJA CUFF
- ZIPPERED FRONT CLOSURE
- HAND POCKET
- SPANDEX FIT HEM
- ADJUSTABLE HOOD

COLORS:

1. BLACK
2. DRIFTWOOD
3. JEWEL GREEN
4. IVORY


CLASSIC SNOW BIB
210
MID WAIST RISE SNOW BIB
FABRIC:
+ PLUS SIZE AVAILABLE

- WP TECH STRETCH POLYESTER

FEATURES:

- D.W.R. TREATMENT
- LARGE ZIPPER ENTRY
- LEG SNOW CUFFS
- ADJUSTABLE SUSPENDERS
- ELASTIC SIDE WAISTBAND

COLORS:

1. BLACK
2. GREYSTONE
3. CINNAMON


OVERLAND BIB
211
HIGH RISE SNOW BIB
FABRIC:
+ PLUS SIZE AVAILABLE

- WP DOBBY SNOW-TAC POLY

FEATURES:

- CRITICAL TAPED SEAT SEAM
- ZIPPERED LEG OPENING
- FULL RISE PROTECTION
- ZIPPERED POCKET
- D.W.R. TREATMENT
- LEG SNOW CUFFS
- ADJUSTABLE SUSPENDERS
- ELASTIC SIDE WAISTBAND
- D-RING CLIP
- OXFORD REINFORCED CUFF

COLORS:

1. BLACK
2. BLACK CHERRY


VERTIX
214
RENTAL BUILT REINFORCED SNOW BIB
FABRIC:
+ PLUS SIZE AVAILABLE

- WPB. 320D NYLON TASLON

FEATURES:

- CRITICAL TAPED SEAMS
- ADJUSTABLE SUSPENDERS
- BAR TACK STRESS POINTS
- ZIPPERED POCKETS
- LEG SNOW CUFFS
- SIDE RIB KNIT PANELS
- DOUBLE STITCHED SEAT
- TASLON ZIPPERS
- YKK ZIPPERS

COLORS:

1. BLACK
2. STONE

**ENVY SHELL PANT****205****4-WAY STRETCH SOFT SHELL PANT****FABRIC:****+ PLUS SIZE AVAILABLE**

- WP 8K 3-LAYER POLYESTER STRETCH

FEATURES:

- 4-WAY STRETCH FABRIC
- LEG SNOW CUFF
- 3 LAYER CONSTRUCTION
- DWR COATING
- INNER SNOW CUFFS
- ZIPPERED LEG CUFFS
- MICRO FLEECE LINED
- ZIPPERED POCKETS

COLORS:

1. BLACK
2. WHITE
3. DEEP LAGOON
4. MERLOT
5. CHESTNUT
6. BLUE CAMO
7. GREY CAMO

SOFT SHELL**215****STRETCH FLEECE LINED PANT****FABRIC:****+ PLUS SIZE AVAILABLE**

- WPB 8K 3 LAYER POLY

FEATURES:

- 4-WAY STRETCH FABRIC
- 3 LAYER CONSTRUCTION
- DWR COATING
- LEG SNOW CUFFS
- ZIPPERED LEG CUFFS
- MICRO FLEECE BONDED
- REAR POCKETS

COLORS:

1. BLACK
2. WHITE
3. DEEP LAGOON
4. MERLOT
5. CHESTNUT
6. BLUE CAMO
7. GREY CAMO

FLY-HI**216****SOFT SHELL STRETCH BIB****FABRIC:****+ PLUS SIZE AVAILABLE**

- WPB 8K 3 LAYER POLY

FEATURES:

- 4-WAY STRETCH FABRIC
- 3 LAYER CONSTRUCTION
- DWR COATING
- SIDE ZIP OPENING
- SNOW CUFFS
- ZIPPERED LEGCUFF
- MICRO FLEECE BONDED
- REAR POCKET

COLORS:

1. BLACK
2. WHITE
3. MERLOT
4. CHESTNUT
5. GREY CAMO



PULL ON **217**

CLASSIC FIT INSULATED SNOW PANT

FABRIC: **+ PLUS SIZE AVAILABLE**

- WP TECH STRETCH POLYESTER

FEATURES:

- DWR COATING
- ARTICULATED KNEES
- ADJUSTABLE WAIST TABS
- DOUBLE SNAP CLOSURE
- LEG SNOW CUFFS
- ZIPPERED POCKETS

COLORS:

1. BLACK
2. GREYSTONE
3. WHITE
4. TEAL
5. PINK
6. WHITE CAMO
7. BLACK CAMO

NIMBLE PANT **218**

TAILORED FIT INSULATED PANT

FABRIC: **+ PLUS SIZE AVAILABLE**

- 10K WPB JACQUARD POLYESTER

FEATURES:

- DWR COATING
- CRITICAL TAPED SEAMS
- ZIPPERED LEG VENTS
- INNER SNOW CUFF
- BOOT CUFF GUSSET
- THIGH POCKET
- DRAW CORD WAIST
- ZIPPERED HAND POCKETS
- REAR POCKETS

COLORS:

1. BLACK
2. BABY PINK
3. MINT
4. BLUE METAL
5. STONE

TRAX PANT 2.0 **220**

INSULATED STRETCH SNOW PANT

FABRIC: **+ PLUS SIZE AVAILABLE**

- 10K WPB POLYESTER / ELASTINE

FEATURES:

- DWR COATING
- CRITICAL TAPED SEAMS
- INNER SNOW CUFF
- BOOT CUFF GUSSET
- THIGH POCKET
- DRAW CORD WAIST
- ZIPPERED HAND POCKETS
- REAR POCKETS
- INNER ADJUSTABLE WAIST TABS

COLORS:

1. BLACK
2. WHITE
3. EARTHSTONE
4. PINK FADE
5. ALLURE BLUE
6. BLACK CHERRY
7. DEEP LAGOON

WOMENS PANTS



RIDER PANT

219

INSULATED RELAXED FIT BOARD PANT

FABRIC:

- WP TECH STRETCH POLYESTER

FEATURES:

- DWR COATING
- CRITICAL TAPED SEAMS
- ADJUSTABLE WAIST TABS
- ZIPPERED POCKETS
- LEG VENTS
- LEG SNOW CUFFS
- OXFORD REINFORCED CUFF

COLORS:

1. BLACK
2. WHITE
3. GOLD
4. BLACK CURRANT
5. PALE AQUA
6. CINNAMON

+ PLUS SIZE AVAILABLE

ARIES

230

STRAIGHT LEG INSULATED PANT

FABRIC:

- WPB 10K DENIM POLY TWILL

FEATURES:

- CRITICAL TAPED SEAMS
- ARTICULATED KNEES
- ADJUSTABLE WAIST TABS
- ZIPPERED LEG VENTS
- LEG SNOW CUFFS
- ZIPPERED POCKETS
- ADJUSTABLE WEB BELT
- OXFORD REINFORCED CUFF

COLORS:

1. BLACK DENIM
2. BLUE DENIM
3. PINK DENIM
4. WHITE DENIM

+ PLUS SIZE AVAILABLE



STATEMENT PANT

240

INSULATED PRINTED PANT

FABRIC:

+ PLUS SIZE AVAILABLE

- WPB 10K 320D POLY TASLON

FEATURES:

- CRITICAL TAPED SEAMS
- ARTICULATED KNEES
- ADJUSTABLE WAIST TABS
- ZIPPERED LEG VENTS
- LEG SNOW CUFFS
- ZIPPERED POCKETS
- REAR POCKET

COLORS:

- 1. PINK FADE
- 2. ALLURE BLUE
- 3. PINK INK
- 4. PURPLE INK
- 5. GREEN STONE
- 6. WHITE STONE
- 7. LEOPARD



CEDAR BIB

290

INSULATED SNOW BIBS

FABRIC:

- 10K WPB MINI OXFORD NYLON

FEATURES:

- DWR COATING
- CRITICAL TAPED SEAMS
- ARTICULATED KNEES
- ADJUSTABLE SUSPENSERS
- ZIPPERED LEG VENTS
- SIDE WAIST ZIPS ENTRY
- INNER SNOW CUFFS
- ZIPPERED POCKETS
- UTILITY CHEST POCKET

COLORS:

- 1. BLACK
- 2. RUST
- 3. BLACK CURRANT
- 4. SEAFOAM



THE DUNGAREE

270

INSULATED SNOW COVERALL

FABRIC:

+ PLUS SIZE AVAILABLE

- WPB 10K MINI OXFORD POLY

FEATURES:

- DWR COATING
- CRITICAL TAPED SEAMS
- ARTICULATED KNEES
- ADJUSTABLE SUSPENSERS
- ZIPPERED LEG VENTS
- SIDE WAIST ZIPS ENTRY
- LEG SNOW CUFFS
- ZIPPERED POCKETS
- UTILITY CHEST POCKET

COLORS:

- 1. BLACK
- 2. GOLD
- 3. MIDNIGHT
- 4. DEEP LAGOON



GROOVE **260**

INSULATED SNOW COVERALL

FABRIC: **+ PLUS SIZE AVAILABLE**

• WPB 10K 300D OXFORD POLY TASLON

FEATURES:

- DWR COATING
- CRITICAL TAPED SEAMS
- ARTICULATED KNEES
- ADJUSTABLE SUSPENDERS
- ZIPPERED LEG VENTS
- FULL ZIP FRONT OPENING
- LEG SNOW CUFFS
- ZIPPERED POCKETS
- UTILITY CHEST POCKET

COLORS:

1. BLACK
2. MERLOT
3. TARMAC





PALOMAR SKIRT 207

POLARTEC ISOTHERMAL SKIRT

FABRIC:

- 2 TONE POLY SWEATER FLEECE

FEATURES:

- NON PILLING
- BRUSHED LINED
- LIGHT WEIGHT & LOFTY
- SNAP OPENING
- RIGHT HAND STOW POCKET
- 15.5" FRONT / 16" IN BACK

COLORS:

1. BLACK
2. HEATHER GREY
3. ROSE

OSLO 2.0 SKIRT 212

INSULATED SHORT SKIRT

FABRIC:

+ PLUS SIZE AVAILABLE

- 300T POLYESTER

FEATURES:

- DWR COATING
- SYNTHETIC DOWN INSULATION
- WIDE COMFORT WAIST BAND
- EASY ACCESS FULL ZIP SIDE
- MID THIGH LENGTH

COLORS:

1. BLACK
2. SEAFOAM
3. MAUVE

BERGEN 213

INSULATED MID LENGTH SKIRT

FABRIC:

+ PLUS SIZE AVAILABLE

- 300T POLYESTER

FEATURES:

- DWR COATING
- SYNTHETIC DOWN FILLING
- ZIPPERED HAND POCKETS
- ZIPPERED SLIT AT HEM
- BELT LOOPS
- 17 INCH FRONT HEM (M)
- 22 INCH BACK HEM (M)
- MID LENGTH

COLORS:

1. BLACK
2. HUNTER GREEN
3. BLUE GREY

A young girl with brown hair in a braid, wearing a light green and purple winter jacket and black pants, stands in a snowy forest. She is smiling and looking to her right. The background is filled with snow-covered evergreen trees and a soft, diffused light.

Girls



POPPY
3202-J YOUTH (8-18)
3202-P KIDS (4-7)
3202-T TODDLER (2-4T)

ALL AGES INSULATED JACKET

FABRIC:
 · 10K WPB 320D POLY OXFORD

- FEATURES:**
- DWR COATING
 - CRITICAL TAPED SEAMS*
 - PIT ZIPS*
 - TECH SNOWSKIRT *
 - REMOVABLE HOOD
 - NINJA CUFFS*
 - THERMAL MESH LINING*
 - GOGGLE POCKET*
 - AUDIO POCKET*

- COLORS:**
1. BLUE DAZE
 2. SEAFOAM
 3. DUSTY PINK
 4. ASSORTED

EXPLORER
3203-J YOUTH (8-18)
3203-P KIDS (4-7)
3203-T TODDLER (2-4T)

ALL AGES PARKA

FABRIC:
 · WP 150D POLYESTER TWILL

- FEATURES:**
- DWR COATING
 - CRITICAL TAPED SEAMS*
 - PIT ZIPS*
 - TECH SNOWSKIRT *
 - REMOVABLE HOOD
 - REMOVABLE FAUX FUR TRIM
 - NINJA CUFFS*
 - THERMAL MESH LINING*
 - GOGGLE POCKET*
 - AUDIO POCKET*

- COLORS:**
1. BLACK
 2. LAVENDER
 3. SEAGREEN
 4. ASSORTED

MASH UP
3204-J YOUTH (8-18)
3204-P KIDS (4-7)
3204-T TODDLER (2-4T)

ALL AGES INSULATED JACKET

FABRIC:
 · 10K WPB 320D POLY DOBBY

- FEATURES:**
- DWR COATING
 - CRITICAL TAPED SEAMS*
 - PIT ZIPS*
 - TECH SNOWSKIRT*
 - THERMAL MESH LINING*
 - NINJA CUFFS*
 - INSULATED HOOD
 - AUDIO POCKET*
 - GOGGLE POCKET*
 - ZIPPERED HAND POCKETS

- COLORS:**
1. MINT COMBO
 2. PINK COMBO
 3. ASSORTED

**MILA****3206-J** YOUTH (8-18)

YOUTH INSULATED JACKET

FABRIC:

- 10K WPB 150D POLYESTER

FEATURES:

- DWR COATING
- CRITICAL TAPED SEAMS
- PIT ZIPS
- TECH SNOWSKIRT
- NINJA CUFFS
- THERMAL MESH LINING
- GOGGLE POCKET
- AUDIO POCKET

COLORS:

1. MINT
2. LILAC
3. WHITE
4. ASSORTED

**WINTERLAND PARKA****3207-J** YOUTH (8-18)

YOUTH INSULATED FLEECE LINED PARKA

FABRIC:

- 320 D POLYESTER TASLON

FEATURES:

- DWR COATING
- FLEECE LINED BODY
- NINJA CUFFS
- REMOVABLE FAUX FUR TRIM
- ZIPPERED POCKETS

COLORS:

1. BLACK
2. DEEP LAGOON
3. LAVENDER CLOUD

**KODIAK COAT****3208-J**
3208-P
3208-TYOUTH (8-18)
KIDS (4-7)
TODDLER (2-4T)

ALL AGES INSULATED JACKET

FABRIC:

- WP 228 SNOW TAC TASLON POLY

FEATURES:

- DWR COATING
- INSULATED HOOD
- QUILTED INSULATED LINING
- ZIPPERED POCKETS
- FLEECE SNOW CUFF

COLORS:

1. TIE DYE GEO SWIRL
2. TEAL GEO
3. BLACK DOT
4. ASSORTED

GIRLS JACKETS



SUGARCOAT

3240-J YOUTH (8-18)

YOUTH INSULATED JACKET

FABRIC:

- 10K WPB 150D MELANGE POLYESTER

FEATURES:

- DWR COATING
- CRITICAL TAPED SEAMS
- PIT ZIPS
- TECH SNOWSKIRT
- THERMAL MESH LINING
- NINJA CUFFS
- INSULATED HOOD
- AUDIO POCKET
- GOGGLE POCKET
- CHEST POCKET

COLORS:

1. HONEYDEW
2. MINT
3. METAL BLUE
4. ASSORTED

ASPENS CALLING

3241-J YOUTH (8-18)

YOUTH INSULATED JACKET

FABRIC:

- WP POLY TWILL

FEATURES:

- DWR COATING
- PIT ZIPS
- TECH SNOWSKIRT
- THERMAL MESH LINING
- NINJA CUFFS
- REMOVABLE HOOD
- REMOVABLE FAUX FUR TRIM
- AUDIO POCKET
- GOGGLE POCKET

COLORS:

1. BLACK
2. WHITE
3. GREY PEBBLE
4. MAGENTA
5. BLUE DUSK
6. ASSORTED (WHITE/MAGENTA)



1



4



2



3



5



6

**SNOWDAY**

3220-J
3220-P
3220-T

YOUTH (8-18)
KIDS (4-7)
TODDLER (2-4T)

ALL AGES INSULATED JACKET**FABRIC:**

- WP 228 SNOW TAC TASLON POLY

FEATURES:

- DWR COATING
- INSULATED HOOD
- FLEECE LINED
- SNOWSKIRT
- REFLECTIVE PIPING
- ZIPPERED POCKETS

COLORS:

1. LILAC TIE DYE
2. PURPLE SWIRL
3. RAINBOW INK
4. PURPLE AZTEC
5. FLORAL NAVY
6. JADE HEARTS
7. ASSORTED (FLORAL/HEARTS)

YUKON 3.0**3111-J** YOUTH (8-18)**3 IN 1 JACKET****FABRIC:**

- WP HONEYCOMB RIP STOP POLYESTER

FEATURES:

- DWR COATING
- CRITICAL TAPED SEAMS
- REMOVABLE FLEECE LINER
- ADJUSTABLE CUFFS
- ZIPPERED POCKETS
- REFLECTIVE PIPING

COLORS:

1. BLACK
2. TEAL
3. DUSTY PINK

4. ASSORTED



DYNAMIC PUFFER

3214-J YOUTH (8-18)
3214-P KIDS (4-7)
3214-T TODDLER (2-4T)

ALL AGES PUFFER JACKET

FABRIC:

- WR 380T NYLON

FEATURES:

- DWR TREATMENT
- 120 GRAM INSULATION
- LIGHTWEIGHT SYNTHETIC DOWN
- ZIPPERED HAND POCKETS
- INSULATED HOOD

COLORS:

1. BLACK
2. PURPLE TIE DYE
3. LAVENDER
4. TEAL
5. GEO PRINT
6. ASSORTED (PURPLE TIE DYE/LAVENDER)

LUNA

3233-J YOUTH (8-18)

YOUTH SYNTHETIC DOWN JACKET

FABRIC:

- 300T WP POLY PONGEE

FEATURES:

- DWR COATING
- SYNTHETIC DOWN FILL
- INSULATED HOOD
- ZIPPERED POCKETS
- REMOVABLE FAUX FUR TRIM
- NINJA CUFFS

COLORS:

1. BLACK
2. GREEN
3. WHITE
4. BLACK CURRANT
5. BLUE POPPY
6. ASSORTED (BLACK/GREEN)

NOVA

3215-P KIDS (4-7)
3215-T TODDLER (2-4T)

FLEECE SHERPA LINED JACKET

FABRIC:

- 300T POLYESTER

FEATURES:

- DWR COATING
- SHERPA LINED BODY
- SHERPA LINED HOOD
- SNAP FRONT POCKETS
- ELASTIC HEM AND CUFF

COLORS:

1. FLORAL NAVY
2. LEOPARD
3. ASSORTED

**POWDERDOWN JACKET**

3231-J YOUTH (8-18)
3231-P KIDS (4-7)
3231-T TODDLER (2-4T)

ALL AGES DOWN JACKET**FABRIC:**

- 380T NYLON SHELL

FEATURES:

- WATER REPELLENT
- 90/10 DUCK DOWN FILL
- DOWN PROOF CONSTRUCTION
- PACKABLE INTO POCKET
- ZIPPERED POCKETS
- LIGHTWEIGHT

COLORS:

1. BLACK
2. BLACK CURRANT
3. DEEP LAGOON
4. URBAN GREEN
5. MARBLE
6. GREEN STONE
7. FLOWER PRINT

POWDERDOWN VEST

3232-J YOUTH (8-18)
3232-P KIDS (4-7)
3232-T TODDLER (2-4T)

ALL AGES DOWN VEST**FABRIC:**

- 380T NYLON SHELL

FEATURES:

- WATER REPELLENT
- 90/10 DUCK DOWN FILL
- DOWN PROOF CONSTRUCTION
- PACKABLE INTO POCKET
- ZIPPERED POCKETS
- LIGHTWEIGHT

COLORS:

1. BLACK
2. BLACK CURRANT / CINNAMON
3. DEEP LAGOON / LAGOON
4. URBAN GREEN
5. MARBLE
6. GREEN STONE
7. FLOWER PRINT

VENUS SHELL

3227-J YOUTH (8-18)

YOUTH HOODED SOFT SHELL JACKET**FABRIC:**

- WP 8K 3 LAYER POLY / SPANDEX

FEATURES:

- 3 LAYER CONSTRUCTION
- DWR COATING
- MICRO FLEECE BONDED
- WIND AND WATER RESISTANT
- 3 ZIPPERED POCKETS
- 4-WAY STRETCH FABRIC

COLORS:

1. BLACK
2. WHITE
3. MERLOT
4. BLUE CAMO
5. GREY CAMO



CLASSIC SOFT SHELL **3228-J** YOUTH (8-18)

YOUTH SOFT SHELL JACKET

FABRIC:

- WP 8K 3 LAYER POLY / SPANDEX

FEATURES:

- 3 LAYER CONSTRUCTION
- DWR COATING
- MICRO FLEECE BONDED
- WIND AND WATER RESISTANT
- 3 ZIPPERED POCKETS
- 4-WAY STRETCH FABRIC

COLORS:

- 1. BLACK
- 2. WHITE
- 3. DEEP LAGOON
- 4. MERLOT
- 5. CHESTNUT
- 6. BLUE CAMO
- 7. GREY CAMO



8



BRECK FLEECE

ALL AGES 1/4 SNAP FLEECE

FABRIC:

- POLY KNIT FLEECE

FEATURES:

- NON PILL FLEECE
- 1/4 SNAP OPENING
- ELASTIC CUFF
- ELASTIC HEM
- MICRO FLEECE

COLORS:

- 1. TEAL TIE DYE
- 2. PURPLE FLORAL
- 3. RAINBOW INK
- 4. CREAM TERRAZZO
- 5. PURPLE AZTEC
- 6. JADE HEARTS
- 7. LAVENDER MINT
- 8. LLAMA
- 9. GOLD POPPIES
- 10. BROWN PLAID



7

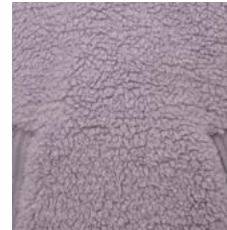


9



10

3212-J YOUTH (8-18)
3212-P KIDS (4-7)
3212-T TODDLER (2-4T)

**BRECK SHERPA****KIDS SHERPA FLEECE****FABRIC:**

- BERBER FLEECE

FEATURES:

- NON-PILLING
- MACHINE WASHABLE
- FULL ZIP CLOSURE
- ELASTIC HEM
- ELASTIC CUFF

COLORS:

1. PINK AZTEC
2. PINK HEART
3. BLACK DIAMOND
4. ASSORTED

3216-J YOUTH (8-18)
3216-P KIDS (4-7)
3216-T TODDLER (2-4T)

SNUGGLE FLEECE**SHERPA FLEECE SNAP JACKET****FABRIC:**

- 270G BERBER FLEECE

FEATURES:

- NON-PILLING
- MACHINE WASHABLE
- SNAP CLOSURE
- KANGAROO POCKET
- ULTRA PLUSH HAND FEEL

COLORS:

1. CREAM FLORAL
2. GREY CHECK
3. LILAC

3217-J YOUTH (8-18)

BEARY SOFT HOODIE**LITTLE ONES PLUSH FLEECE****FABRIC:**

- PLUSH MICRO FLEECE

FEATURES:

- ULTRA SOFT HAND FEEL
- SIDE POCKETS
- ANIMAL EAR HOOD
- MACHINE WASHABLE
- ELASTIC CUFFS

COLORS:

1. BERRY
2. CREME
3. LEOPARD

3218-P KIDS (4-7)
3218-T TODDLER (2-4T)
3218-I INFANT (12-18M)

4. PINK LEOPARD
5. GREY
6. ASSORTED (LEOPARD'S)



BEARY COVERALL

3219-P KIDS (4-7)
3219-T TODDLER (2-4T)
3219-I INFANT (12-18M)

LITTLE ONES FLEECE COVERALL

FABRIC:

- PLUSH MICRO FLEECE

FEATURES:

- ULTRA SOFT HAND FEEL
- ZIP TO LEG EASY ENTRY
- ANIMAL EAR HOOD
- MACHINE WASHABLE
- ELASTIC CUFFS

COLORS:

1. HEATHER GREY
2. DEER PRINT
3. ASSORTED

NOVA SNAP

3222-J YOUTH (8-18)
3222-P KIDS (4-7)
3222-T TODDLER (2-4T)

FLEECE JACKET

FABRIC:

- POLYESTER TASLON / BERBER FLEECE

FEATURES:

- NON-PILLING
- TASLON TRIMS
- ZIPPERED CHEST POCKET
- HAND POCKETS
- DROP TAIL HEM

COLORS:

1. SEAFOAM
2. FUNFETTI
3. ASSORTED



3226-J YOUTH (8-18)
3226-P KIDS (4-7)
3226-T TODDLER (2-4T)

STACKED PUFFER

COLORBLOCK PUFFER

FABRIC:

- 300T POLYESTER

FEATURES:

- DWR COATING
- SYNTHETIC DOWN INSULATION
- HAND POCKETS
- ELASTIC CUFF

COLORS:

1. BLACK / BLUE DUSK
2. LAVENDER / MINT
3. ASSORTED



NS-1585-J YOUTH (8-18)
NS-1585-P KIDS (4-7)
NS-1585-T TODDLER (2-4T)

LODGE FLEECE

PLUSH CORAL FLEECE JACKET

FABRIC:

- 350G POLYESTER

FEATURES:

- FULL ZIP WITH DRAFT FLAP
- ELASTIC CUFF
- ELASTIC HEM
- NON PILL
- ZIPPERED HAND POCKETS

COLORS:

1. BLACK
2. STONE
3. BLACK CURRANT



BIRDEYE SNAP

3242-J YOUTH (8-18)

YOUTH 1/2 SNAP SHERPA PULLOVER

FABRIC:

- BERBER FLEECE

FEATURES:

- NON-PILLING
- MACHINE WASHABLE
- 1/2 ZIP CLOSURE
- SIDE POCKETS
- ELASTIC ARM AND HEM
- 2 PANEL HOOD

COLORS:

1. BLACK
2. STONE
3. BLACK CURRANT
4. CHARCOAL
5. DUSTY PINK
6. TAN HERITAGE
7. CHARCOAL HERITAGE



311-J YOUTH (8-18)
311-P KIDS (4-7)
311-T TODDLER (2-4T)

OVERLAND BIB

ALL AGES HIGH RISE SNOW BIB

FABRIC:

- WP DOBBY POLYESTER

FEATURES:

- DWR COATING
- CRITICAL TAPED SEAT SEAM
- ZIPPERED LEG OPENING
- FULL RISE PROTECTION
- ZIPPERED POCKET
- LEG SNOW CUFFS
- ADJUSTABLE SUSPENDERS
- ELASTIC SIDE WAISTBAND

COLORS:

1. BLACK
2. BLACK CHERRY



312-J YOUTH (8-18)
312-P KIDS (4-7)
312-T TODDLER (2-4T)
312-I INFANT (12-24M)

CLASSIC BIB

ALL AGES BIB

FABRIC:

- TECH STRETCH POLYESTER

FEATURES:

- DWR COATING
- LEG SNOW CUFF
- ADJUSTABLE SUSPENDERS
- ELASTIC SIDE WAISTBAND

COLORS:

1. BLACK
2. GREY STONE
3. CINNAMON



316-P KIDS (4-7)
316-T TODDLER (2-4T)

BRISK BIB

INSULATED SNOW PANT W/ SUSPENDERS

FABRIC:

- WP 228 POLY TASLON

FEATURES:

- DWR COATING
- TAPED SEAMS
- ZIPPERED LEG SNOW CUFF
- REMOVABLE SUSPENDERS
- ADJUSTABLE SUSPENDERS
- ADJUSTABLE WAIST TABS
- ARTICULATED KNEE
- REFLECTIVE TRIMS
- ZIPPERED POCKETS

COLORS:

1. BLACK
2. PINK
3. LAVENDER



9



1

2

3



4

5

6



7



8

NUNU BIB**HEAVY INSULATED SNOW BIB****FABRIC:**

- WP 320D POLY TASLON

FEATURES:

- DWR COATING
- 8 OZ INSULATION
- ELASTIC WAISTBAND
- GROW CUFF EXTENSION

COLORS:

1. BLACK
2. PINK (REPEAT)
3. MINT (REPEAT)
4. LAVENDER (REPEAT)
5. PINK AZTEC (AS 24-3206)
6. FLORAL NAVY (AS 24-3215)
7. PINK GEO (AS 24-3206)

8. LAVENDER TIE DYE (REPEAT)
9. PURPLE SWIRL (MAIN)

310-P KIDS (4-7)
310-T TODDLER (2-4T)

**FLEECE TOPPER****TOP FLEECE BIB****FABRIC:**

- WP POLY TASLON / FLEECE

FEATURES:

- DWR COATING
- SOFT FLEECE UPPER
- LONG CENTER FRONT ZIPPER
- EASY SHOULDER VELCRO TABS
- ADJUSTABLE WAIST
- ELASTIC REAR WAISTBAND
- GROW CUFF EXTENSION
- LEG SNOW CUFF

COLORS:

1. BLACK
2. SAGE
3. DUSTY PINK
4. LAVENDER

309-P KIDS (4-7)
309-T TODDLER (2-4T)





CLASSIC PANT

317-J YOUTH (8-18)
317-P KIDS (4-7)
317-T TODDLER (2-4T)

INSULATED PULL ON SNOW PANT

FABRIC:

- TECH STRETCH POLYESTER

FEATURES:

- DWR COATING
- CRITICAL TAPED SEAM SEAT
- ARTICULATED KNEES
- LEG SNOW CUFF
- ZIPPERED POCKETS
- ELASTIC WAIST

COLORS:

- 1. BLACK
- 2. GREYSTONE
- 3. WHITE
- 4. TEAL
- 5. PINK
- 6. WHITE CAMO
- 7. BLACK CAMO

SOFT SHELL PANT

315-J YOUTH (8-18)

YOUTH STRETCH SHELL PANT

FABRIC:

- W.P.B. 8K 3 LAYER POLY

FEATURES:

- 4-WAY STRETCH FABRIC
- D.W.R. TREATMENT
- LEG SNOW CUFFS
- ZIPPERED LEG CUFFS
- MICRO FLEECE BONDED
- REAR POCKETS

COLORS:

- 1. BLACK
- 2. WHITE
- 3. DEEP LAGOON
- 4. MERLOT
- 5. CHESTNUT
- 6. BLUE CAMO
- 7. GREY CAMO

NIMBLE PANT

318-J YOUTH (8-18)

TAILORED FIT INSULATED PANT

FABRIC:

- 10K WPB JACQUARD POLYESTER

FEATURES:

- DWR COATING
- CRITICAL TAPED SEAMS
- ZIPPERED LEG VENTS
- INNER SNOW CUFF
- BOOT CUFF GUSSET
- THIGH POCKET
- DRAW CORD WAIST
- ZIPPERED HAND POCKETS
- REAR POCKETS

COLORS:

- 1. BLACK
- 2. BABY PINK
- 3. MINT
- 4. BLUE METAL
- 5. STONE

**RIDER PANT****391-J** YOUTH (8-18)

INSULATED RELAXED FIT PANT

FABRIC:

- W.P. TECH STRETCH POLYESTER

FEATURES:

- CRITICAL TAPED SEAMS
- ARTICULATED KNEES
- ADJUSTABLE WAIST TABS
- LEG VENTS
- LEG SNOW CUFFS
- OXFORD REINFORCED CUFF

COLORS:

1. BLACK
2. WHITE
3. GOLD
4. BLACK CURRANT
5. PALE AQUA
6. CINNAMON

TRAX PANT**320-J** YOUTH (8-18)

INSULATED STRECH SNOW PANT

FABRIC:

- 10K WPB MECHANIC STRETCH TWILL

FEATURES:

- DWR COATING
- CRITICAL TAPED SEAMS
- LEG VENTS
- LEG SNOW CUFF
- OXFORD REINFORCED CUFF
- DOUBLE BUTTON CLOSURE
- WATER TIGHT HAND POCKETS

COLORS:

1. BLACK
2. WHITE
3. EARTHSTONE
4. PINK FADE
5. ALLURE BLUE
6. BLACK CHERRY
7. DEEP LAGOON

STATEMENT PANT**340-J** YOUTH (8-18)

PRINTED INSULATED BOARD PANT

FABRIC:

- 10K WPB 320D POLY TASLON

FEATURES:

- CRITICAL TAPED SEAMS
- ARTICULATED KNEES
- ADJUSTABLE WAIST TABS
- LEG VENTS
- LEG SNOW CUFFS
- ZIPPERED POCKETS

COLORS:

1. PINK FADE
2. ALLURE BLUE
3. PINK INK
4. PURPLE INK
5. GREEN STONE
6. WHITE STONE
7. LEOPARD

**SUNSHINE BIB****360-J** YOUTH (8-18)**INSULATED BIB OVERALL****FABRIC:**

- 10K WPB DOBBY POLYESTER

FEATURES:

- DWR COATING
- CRITICAL TAPED SEAMS
- ARTICULATED KNEES
- UTILITY CHEST POCKET
- ZIPPERED LEG VENTS
- HAND POCKETS
- REAR POCKET
- SIDE WAIST ZIPS FOR EASY ENTRY

COLORS:

1. BLACK
2. CORAL
3. MINT

GROOVE**316-J** YOUTH (8-18)**INSULATED SNOW COVERALL****FABRIC:**

- WPB 10K 300D OXFORD POLY TASLON

FEATURES:

- DWR COATING
- CRITICAL TAPED SEAMS
- ARTICULATED KNEES
- ADJUSTABLE SUSPENDERS
- ZIPPERED LEG VENTS
- FULL ZIP FRONT OPENING
- LEG SNOW CUFFS
- ZIPPERED POCKETS
- UTILITY CHEST POCKET

COLORS:

1. MERLOT
2. BLACK
3. OD

+ PLUS SIZE AVAILABLE

**POPPY SET**

93202-P KIDS (4-7)
93202-T TODDLER (2-4T)

INSULATED JACKET & BIB COMBO**FABRIC:**

- WP 228 SNOW TAC TASLON POLY

FEATURES:

- DWR COATING
- TECH SNOWSKIRT
- SNAP-OFF INSULATED HOOD
- INNER POCKET
- 8 OZ INSULATED NUNU BIB
- ARTICULATED KNEE
- ZIPPERED POCKETS

COLORS:

1. BLUE DAZE / PINK BIB
2. SEAFOAM / PINK BIB
3. DUSTY PINK / BLACK BIB

**MASH UP SET**

93204-P KIDS (4-7)
93204-T TODDLER (2-4T)

INSULATED JACKET & BIB COMBO**FABRIC:**

- 10K WPB 320D POLY TASLON

FEATURES:

- DWR COATING
- TECH SNOWSKIRT
- SNAP-OFF INSULATED HOOD
- INNER POCKET
- 8 OZ INSULATED NUNU BIB
- ARTICULATED KNEE
- ZIPPERED POCKETS

COLORS:

1. MINT COMBO
2. PINK COMBO
3. ASSORTED





SNOWDAY SET **93220-P** KIDS (4-7)
 93220-T TODDLER (2-4T)

INSULATED JACKET & BIB COMBO

FABRIC:

- WP 228 SNOW TAC TASLON POLY

FEATURES:

- DWR COATING
- INSULATED HOOD JACKET
- FLEECE LINED JACKET
- BIB PANT
- REFLECTIVE PIPING

COLORS:

1. LILAC TIE DYE/LAVENDER BIB
2. PURPLE SWIRL/LAVENDER BIB
3. RAINBOW INK/PINK BIB
4. PURPLE AZTEC/BLACK BIB
5. FLORAL NAVY/MINT BIB
6. JADE HEARTS/BLACK BIB

Boys





DROP IN 2.0

401-J YOUTH (8-18)
401-P KIDS (4-7)
401-T TODDLER (2-4T)

ALL AGES INSULATED JACKET

FABRIC:

- 10K WPB POLYESTER TASLON

FEATURES:

- DWR COATING
- CRITICAL TAPED SEAMS
- TECH SNOWSKIRT
- THERMAL MESH LINING
- NINJA CUFFS
- CHEST POCKET
- INSULATED HOOD
- AUDIO POCKET
- GOGGLE POCKET

COLORS:

1. BLACK
2. TARMAC
3. WHITE ACID
4. NAVY ACID
5. ASSORTED (ACID)

MONTY

402-J YOUTH (8-18)

YOUTH INSULATED JACKET

FABRIC:

- 10K WPB MECHANIC STRETCH POLYESTER

FEATURES:

- DWR COATING
- CRITICAL TAPED SEAMS
- TECH SNOWSKIRT
- THERMAL MESH LINING
- NINJA CUFFS
- INSULATED HOOD
- AUDIO POCKET
- GOGGLE POCKET

COLORS:

1. NAVY / BLAZE
2. CHARCOAL / CITRINE
3. ASSORTED

VENTURE

403-J YOUTH (8-18)

INSULATED JACKET

FABRIC:

- 10K WPB MECHANIC STRETCH POLYESTER

FEATURES:

- DWR COATING
- CRITICAL TAPED SEAMS
- TECH SNOWSKIRT
- THERMAL MESH LINING
- NINJA CUFFS
- INSULATED HOOD
- AUDIO POCKET
- GOGGLE POCKET

COLORS:

1. OD CAMO
2. BLUE DUSK
3. ASSORTED



407-J YOUTH (8-18)
407-P KIDS (4-7)
407-T TODDLER (2-4T)

VERT**ALL AGES INSULATED JACKET****FABRIC:**

- 10K WPB MECHANIC STRETCH POLYESTER

FEATURES:

- DWR COATING
- CRITICAL TAPED SEAMS*
- TECH SNOWSKIRT
- THERMAL MESH LINING*
- NINJA CUFFS*
- ADJUSTABLE CUFFS
- INSULATED HOOD
- AUDIO POCKET*
- GOGGLE POCKET*

COLORS:

1. BLACK / OD / ORANGE
2. BLACK / LIME / OD
3. BLUE / ORANGE / NAVY

4. ASSORTED

**409-J** YOUTH (8-18)**TRINITY 3 IN 1****YOUTH 3 IN 1 SYSTEM JACKET****FABRIC:**

- WP WOVEN POLYESTER

FEATURES:

- DWR COATING
- CRITICAL TAPED SEAMS
- REMOVABLE LINER
- ADJUSTABLE CUFFS
- INSULATED HOOD
- AUDIO POCKET
- GOGGLE POCKET

COLORS:

1. GREY CAMO
2. MARINE
3. ASSORTED



4111-J YOUTH (8-18)
4111-P KIDS (4-7)
4111-T TODDLER (2-4T)

YUKON**ALL AGES 3 IN 1 SYSTEM JACKET****FABRIC:**

- WP MECHANIC STRETCH POLY

FEATURES:

- DWR COATING
- CRITICAL TAPED SEAMS
- REMOVABLE FLEECE LINER
- ADJUSTABLE CUFFS
- LINED HOOD
- REFLECTIVE PIPING
- ZIPPERED HAND POCKETS

COLORS:

1. BLACK / BLACK LINER
2. MUSTARD / BLUE DUSK LINER
3. BLUE DUSK / SKY BLUE LINER
4. ASSORTED



KODIAK COAT

ALL AGES INSULATED JACKET

FABRIC:

- WP 228 SNOW TAC TASLON POLY

FEATURES:

- DWR COATING
- INSULATED HOOD
- QUILTED INSULATED LINING
- ZIPPERED POCKETS
- FLEECE SNOW CUFF

COLORS:

1. BLUE BRICK
2. BLACK GALAXY
3. GREY MAZE
4. ASSORTED

- 408-J** YOUTH (8-18)
- 408-P** KIDS (4-7)
- 408-T** TODDLER (2-4T)

GRAVITY

ALL AGES INSULATED JACKET

FABRIC:

- W.P. 320D POLY TASLON

FEATURES:

- DWR COATING
- CHEST ZIPPER
- TECH SNOWSKIRT
- ELASTIC CUFFS
- INSULATED HOOD
- ZIPPERED HAND POCKETS

COLORS:

1. BLACK
2. GREY PEBBLE
3. OD
4. BLUE
5. BLACK GALAXY
6. BROWN CAMO
7. ASSORTED (BLK/BLUE)





5



1

2

3

4

5

7

4220-J YOUTH (8-18)
4220-P KIDS (4-7)
4220-T TODDLER (2-4T)

EDGE**ALL AGES INSULATED JACKET****FABRIC:**

- W.P. 228T POLY TASLON

FEATURES:

- D.W.R. TREATMENT
- INSULATED HOOD
- FLEECE LINED
- SNOWSKIRT
- REFLECTIVE PIPING
- ZIPPERED POCKETS

COLORS:

1. WHITE ACID
2. BLACK ACID
3. GREY CAMO
4. OD CAMO
5. ORANGE CAMO
6. BLUE GALAXY
7. BLUE BRICK
8. ASSORTED (GREY CAMO/
ORANGE CAMO)

**REVERSIBLE**

4213-P KIDS (4-7)
4213-T TODDLER (2-4T)
4213-I INFANT (12M-24M)

DOUBLE TAKE**REVERSIBLE INSULATED JACKET****FABRIC:**

- MICRO FIBER / FLEECE

FEATURES:

- DWR COATING
- REVERSIBLE TO FLEECE
- ELASTIC CUFF
- ELASTIC HEM
- INSULATED HOOD
- HAND POCKETS
- QUILTED INSULATION

COLORS:

1. BROWN CAMO
2. FLOWER
3. ASSORTED



4214-J YOUTH (8-18)
4214-P KIDS (4-7)
4214-T TODDLER (2-4T)

DYNAMIC PUFFER**ALL AGES PUFFER JACKET****FABRIC:**

- WR 380T NYLON

FEATURES:

- DWR TREATMENT
- 120 GRAM INSULATION
- LIGHTWEIGHT SYNTHETIC DOWN
- ZIPPERED HAND POCKETS
- INSULATED HOOD

COLORS:

1. BLACK
2. BLUE DUSK
3. GREEN
4. BLUE GALAXY
5. GREY CAMO
6. ASSORTED (BLK/GREEN)



REVERSIBLE



COZY COLORBLOCK

4224-J YOUTH (8-18)
4224-P KIDS (4-7)

ALL AGES SHERPA LINED JACKET

FABRIC:

- 300T WP POLY PONGEE

FEATURES:

- DWR COATING
- SYNTHETIC DOWN FILL
- SHERPA LINED
- INSULATED HOOD
- ZIPPERED POCKETS
- INNER CUFFS

COLORS:

1. BLACK/ GREY
2. BLACK/ OD CAMO
3. KHAKI / BLACK
4. ASSORTED



POWDERDOWN

4126-J YOUTH (8-18)
4126-P KIDS (4-7)
4126-T TODDLER (2-4T)

PACKABLE 90/10 DOWN JACKET

FABRIC:

- 400T NYLON SHELL

+ PLUS SIZE AVAILABLE

FEATURES:

- 90/10 DUCK DOWN FILL
- WATER REPELLENT
- 84 GRAM FILL WEIGHT
- PACKABLE INTO POCKET
- ZIPPERED POCKETS
- DOWN PROOF CONSTRUCTION
- LIGHT WEIGHT

COLORS:

1. BLACK
2. HEAVY METAL
3. HUNTER GREEN
4. CRIMSON
5. EGGPLANT
6. NAVY ACID





4119-J YOUTH (8-18)
4119-P KIDS (4-7)
4119-T TODDLER (2-4T)

CLASSIC SOFT SHELL

FULL ZIP SHELL JACKET

FABRIC:

- WPB 8K 3 LAYER POLY SPANDEX

+ PLUS SIZE AVAILABLE

FEATURES:

- 3 LAYER CONSTRUCTION
- WINDBLOCK MEMBRANE
- D.W.R. TREATMENT
- FLEECE LINED
- WIND & WATER RESISTANT
- ZIPPERED HAND POCKETS
- ZIPPERED CHEST POCKET

COLORS:

1. BLACK
2. GREY PEBBLE
3. SLATE
4. STEEL BLUE
5. TRUFFLE
6. CHESTNUT
7. OLIVE



4118-J YOUTH (8-18)
4118-P KIDS (4-7)
4118-T TODDLER (2-4T)

BLADE SOFT SHELL

ALL AGES HOODED SOFT SHELL

FABRIC:

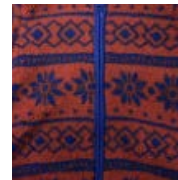
- 10K WPB MECHANIC STRETCH / POLYESTER

FEATURES:

- 3 LAYER CONSTRUCTION
- WINDBLOCK MEMBRANE
- D.W.R. TREATMENT
- FLEECE LINED
- WIND & WATER RESISTANT
- ZIPPERED HAND POCKETS

COLORS:

1. NAVY-ORANGE
2. LODEN-LIME
3. BLACK
4. ASSORTED



4210-J YOUTH (8-18)
4210-P KIDS (4-7)
4210-T TODDLER (2-4T)

TITAN FLEECE

ALL AGES TECH FLEECE HOODIE

FABRIC:
 · 2 TONE KNIT POLYESTER

FEATURES:
 · ANTI PILL FLEECE
 · BRUSH LINED
 · ELASTIC CUFFS
 · ELASTIC HEM
 · ZIPPERED POCKETS

COLORS:
 1. CHARCOAL
 2. BLUE
 3. ORANGE
 4. ASSORTED

2

5

1

3

4

6

BRECK FLEECE

ALL AGES FLEECE PULLOVER

FABRIC:
 · POLY KNIT FLEECE

FEATURES:
 · 1/4 SNAP OPENING
 · ELASTIC CUFF
 · ELASTIC HEM
 · MICRO FLEECE

COLORS:
 1. SLOTHS
 2. DIGITAL CAMO
 3. ORANGE AZTEC
 4. GREY / MOOSE
 5. RED BUFFALO PLAID
 6. CAMO
 7. BLUE BUFFALO PLAID



7

**BRUSHED FLANNEL**

FL-405-J YOUTH (8-18)
FL-405-P KIDS (4-7)
FL-405-T TODDLER (2-4T)

COTTON POLYESTER FLANNEL

FABRIC:**➕ PLUS SIZE AVAILABLE****FEATURES:**

- SOFT COTTON FLANNEL
- BUTTON FRONT
- CHEST POCKET
- PLAID DESIGN
- ADJUSTABLE CUFFS

COLORS:

1. RED
2. GREY
3. BLUE
4. BLUE-WHITE
5. GREEN
6. ASSORTED

**BRAWNY SHIRT**

FLEECE LINED FLANNEL

FABRIC:

- 100% COTTON

FEATURES:

- NON-PILLING
- ADJUSTABLE CUFFS
- CHEST POCKET
- DROP HEM
- 7 BUTTON FRONT CLOSURE

COLORS:

1. CHARCOAL
2. HEATHER GREY
3. NAVY
4. BRICK
5. RUM
6. FERN
7. ASSORTED

**BRAWNY HOODED**

FLEECE LINED FLANNEL

FABRIC:

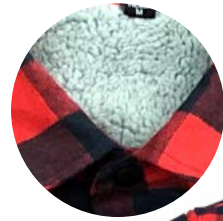
- 10K WPB 320D POLY TASLON

FEATURES:

- SHERPA LINED
- PRINTED PLAID DESIGN
- NON-PILLING
- MACHINE WASHABLE
- 3 PC HOOD
- CHEST POCKETS
- SIDE POCKETS

COLORS:

1. BLUE
2. GREEN
3. BEIGE
4. ASSORTED



SHERPA



SHERPA FLEECE

C409-J YOUTH (8-18)
C409-P KIDS (4-7)

SHERPA LINED HOODED FLEECE JACKET

FABRIC:

- NON PILL PRINTED FLEECE

FEATURES:

- SHERPA LINED
- PRINTED PLAID DESIGN
- NON-PILLING
- MACHINE WASHABLE
- 3 PC HOOD
- CHEST POCKETS
- SIDE POCKETS

COLORS:

- 1. RED
- 2. BROWN
- 3. BLACK
- 4. BLUE
- 5. GREY
- 6. ASSORTED (2 PLAIDS)



WOODSMAN SHERPA

FLSJ-J YOUTH (8-18)
FLSJ-P KIDS (4-7)

SHERPA LINED FLANNEL SHIRT JACKET

FABRIC:

- 60/40 POLY COTTON

FEATURES:

- SOFT FLANNEL SHELL
- SNAP FRONT CLOSURE
- SHERPA LINED BODY
- QUILTED INSULATED ARMS
- DOUBLE CHEST POCKETS
- 2 SIDE HAND POCKETS
- NON-PILLING

COLORS:

- 1. BLACK
- 2. BLUE
- 3. RED
- 4. GREEN
- 5. ASSORTED (2 PLAIDS)



FLANNEL BODYSUIT

FL-ONSIE-T TODDLER (2-4T)
FL-ONSIE-I INFANT (12M-24M)

FLANNEL LONG SLEEVE BUTTON DOWN

FABRIC:

- COTTON FLANNEL

FEATURES:

- SOFT FLANNEL SHELL
- BUTTON FRONT CLOSURE
- NON PILLING
- ELASTIC LEG HEM

COLORS:

- 1. BLACK / GREEN
- 2. NAVY / ORANGE
- 3. ASSORTED

**FLEECE HOODIE**

NS-1580-J YOUTH (8-18)
NS-1580-P KIDS (4-7)

FLEECE HOODED JACKET**FABRIC:**

- NON-PILL POLYESTER

+ PLUS SIZE AVAILABLE

FEATURES:

- SIDE POCKETS
- ANTI PILLING
- MACHINE WASHABLE
- SOFT HAND FEEL

COLORS:

1. BLACK
2. HEATHER GREY
3. DUSTY BLUE

4. OATMEAL

**FLEECE HOODIE**

NS-1581-J YOUTH (8-18)
NS-1581-P KIDS (4-7)

FLEECE HOODED JACKET**FABRIC:**

- NON-PILL POLYESTER

+ PLUS SIZE AVAILABLE

FEATURES:

- SIDE POCKETS
- ANTI PILLING
- MACHINE WASHABLE
- SOFT HAND FEEL

COLORS:

1. BLACK
2. HEATHER GREY
3. DUSTY BLUE

4. OATMEAL

**CANVAS COAT**

CAN-101-J YOUTH (8-18)
CAN-101-P KIDS (4-7)
CAN-101-T TODDLER (2-4T)

UNISEX ALL AGES WORK JACKET**FABRIC:**

- WASHED 12 OZ. CANVAS BODY

FEATURES:

- WASHED 12 OZ. CANVAS BODY
- 4 OZ INSULATION
- METAL ZIPPER
- KNIT CUFF
- 2 SIDE POCKETS

COLORS:

1. BLACK
2. GREY
3. CHOCOLATE

4. BARK
5. BROWN



THERMAL TOP **PF-592-J** YOUTH (8-18)
BASE LAYER PULLOVER

FABRIC:

- POLY STRETCH KNIT

FEATURES:

- WICKING
- COMFORT STRETCH
- ANTI PILL
- BRUSH LINED
- POP PACKAGING

COLORS:

1. BLACK



THERMAL PANT **PF-590-J** YOUTH (8-18)
BASE LAYER THERMAL PULLON PANT

FABRIC:

- POLY STRETCH KNIT

FEATURES:

- WICKING
- COMFORT STRETCH
- ANTI PILL
- BRUSH LINED
- POP PACKAGING

COLORS:

1. BLACK



OVERLAND BIB
HIGH RISE SNOW BIB

FABRIC:

- WP DOBBY POLYESTER

FEATURES:

- CRITICAL TAPED SEAT SEAM
- ZIPPERED LEG OPENING
- FULL RISE PROTECTION
- ZIPPERED POCKET
- D.W.R. TREATMENT

COLORS:

1. BLACK
2. STEEL BLUE

- 511-J** YOUTH (8-18)
- 511-P** KIDS (4-7)
- 511-T** TODDLER (2-4T)

- LEG SNOW CUFFS
- ADJUSTABLE SUSPENDERS
- ELASTIC SIDE WAISTBAND



512-J YOUTH (8-18)
512-P KIDS (4-7)
512-T TODDLER (2-4T)
512-I INFANT (12M-24M)

CLASSIC SKI BIB

INSULATED SNOW BIB

FABRIC:

- WP TECH STRETCH POLYESTER

FEATURES:

- LEG SNOW CUFF
- ADJUSTABLE SUSPENDERS
- ELASTIC SIDE WAISTBAND

COLORS:

1. BLACK
2. NAVY
3. GREYSTONE



VERTEX BIB

RENTAL BUILT REINFORCED SNOW BIB

FABRIC:

- W.P. NYLON TASLON

FEATURES:

- CRITICAL TAPED SEAMS
- ADJUSTABLE SUSPENDERS
- BAR TACK STRESS POINTS
- ZIPPERED POCKETS
- LEG SNOW CUFFS
- SIDE RIB KNIT PANELS
- DOUBLE STITCHED SEAT
- TASLON ZIPPERS
- YKK ZIPPERS

COLORS:

1. BLACK
2. GUNMETAL





1 2 3



4 5 6



7 8



9 10



11

NUNU BIB

510-P
510-T

KIDS (4-7)
TODDLER (2-4T)

HEAVY INSULATED SNOW BIB

FABRIC:

- WP 320D POLY TASLON

FEATURES:

- DWR COATING
- 8 OZ INSULATION
- ELASTIC WAISTBAND
- GROW CUFF EXTENSION
- ZIPPERED HAND POCKETS
- CARGO POCKET
- LEG SNOW CUFFS

COLORS:

- 1. BLACK
- 2. ORANGE
- 3. GREY PEBBLE
- 4. LIME
- 5. NAVY
- 6. BLACK ACID
- 7. GREY CAMO
- 8. OD CAMO
- 9. BLUE GALAXY SPACE
- 10. BLUE BRICK
- 11. ORANGE CAMO



CLASSIC PANT

517-J YOUTH (8-18)
517-P KIDS (4-7)
517-T TODDLER (2-4T)

INSULATED PULL ON PANT

FABRIC:

- WP TECH STRETCH POLYESTER

FEATURES:

- D.W.R. TREATMENT
- ELASTIC WAISTBAND
- LEG SNOW CUFFS
- DRAW STRING CLOSURE
- ZIPPERED POCKETS

COLORS:

1. BLACK
2. GREYSTONE
3. OLIVE



FLEECE TOPPER

409-P KIDS (4-7)
409-T TODDLER (2-4T)

TOP FLEECE BIB

FABRIC:

- WP POLY TASLON / FLEECE

FEATURES:

- DWR COATING
- SOFT FLEECE UPPER
- LONG CENTER FRONT ZIPPER
- EASY SHOULDER VELCRO TABS
- ADJUSTABLE WAIST
- ELASTIC REAR WAISTBAND
- CROW CUFF EXTENSION
- LEG SNOW CUFF

COLORS:

1. BLACK
2. GREY
3. OD



CARGO PANT

INSULATED CARGO SNOWBOARD PANT

519-J YOUTH (8-18)
519-P KIDS (4-7)
519-T TODDLER (2-4T)

FABRIC:

- W.P. TECH STRETCH POLYESTER

FEATURES:

- CRITICAL TAPE SEAM SEAT
- LEG SNOW CUFFS
- ZIPPERED POCKETS
- ELASTIC SIDE WAISTBAND
- OXFORD REINFORCED CUFF
- CARGO POCKETS

COLORS:

- | | |
|----------------|----------|
| 1. BLACK | 5. CAMO |
| 2. GREY PEBBLE | 6. WHITE |
| 3. CHARCOAL | |
| 4. TAN | |



RIDER PANT 2.0

INSULATED RELAXED FIT BOARD PANT

591-J YOUTH (8-18)

FABRIC:

- 10K WPB TECH STRETCH

FEATURES:

- DWR COATING
- TAPED SEAMS
- REMOVABLE SUSPENDERS
- ADJUSTABLE WAIST
- LEG VENTS
- ZIPPERED POCKETS
- LEG SNOW PUFFS
- OXFORD REINFORCED CUFFS

COLORS:

- | | |
|----------------|--------------|
| 1. BLACK | 5. STONE |
| 2. EGGPLANT | 6. NAVY ACID |
| 3. SPUCE GREEN | 7. WHITE |
| 4. BLUE DUSK | |



TRAX PANT

INSULATED STRETCH SNOW PANT

23-550-J YOUTH (8-18)

FABRIC:

- W.P. MECHANIC STRETCH TWILL

FEATURES:

- CRITICAL TAPED SEAMS
- BELT LOOPS
- ZIPPERED POCKETS
- LEG SNOW CUFFS
- OXFORD REINFORCED CUFFS
- 2" EXTENDED GROW CUFFS

COLORS:

- | | |
|-------------|------------|
| 1. BLACK | 4. STONE |
| 2. SPRUCE | 5. MUSTARD |
| 3. EGGPLANT | 6. BLUE |



STATEMENT PANT **5196-J** YOUTH (8-18)
PRINTED INSULATED SNOW PANT

FABRIC:
· W.P.B. 10K STRETCH POLYESTER

FEATURES:
· CRITICAL TAPED SEAMS
· TRICOT FLEECE LINED
· LEG VENTS
· LEG SNOW CUFFS
· DWR COATING
· REINFORCED CROTCH
· ADJUSTABLE WAIST

COLORS:
1. BLACK ACID
2. WHITE ACID
3. OD CAMO

THE DUNGAREE **5191-J** YOUTH (8-18)
INSULATED SNOW COVERALL

FABRIC:
· W.P.B. 5K 400D POLY OXFORD

FEATURES:
· CRITICAL TAPED SEAMS
· DWR COATING
· ARTICULATED KNEES
· ADJUSTABLE ELASTIC SUSPENDERS
· LEG VENTS
· LEG SNOW CUFFS
· UTILITY PATCH POCKET

COLORS:
1. BLACK
2. STEEL BLUE
3. TARMAC
4. SCOUT GREEN

DOOM BIB **5194-J** YOUTH (8-18)
REGULAR FIT INSULATED BIB

FABRIC:
· W.P.B. 10K STRETCH POLYESTER

FEATURES:
· DWR COATING
· CRITICAL TAPED SEAMS
· ADJUSTABLE ELASTIC
· SUSPENDERS
· LEG VENTS
· ZIPPERED LEG OPENING

COLORS:
1. BLACK
2. GUN METAL
3. BOURBON
4. SCOUT GREEN



9407-P KIDS (4-7)
9407-T TODDLER (2-4T)

VERT

INSULATED JACKET & BIB COMBO

FABRIC:

- WPB MECHANIC STRETCH POLYESTER

FEATURES:

- DWR COATING
- TECH SNOWSKIRT
- SNAP-OFF INSULATED HOOD
- INNER POCKET
- 8 OZ INSULATED NUNU BIB
- ARTICULATED KNEE
- ZIPPERED POCKETS

COLORS:

1. BLACK/ OD/ ORANGE
2. BLACK / LIME / OD
3. BLUE/ORANGE/NAVY
4. ASSORTED



94112-P KIDS (4-7)
94112-T TODDLER (2-4T)

GRAVITY SET

INSULATED JACKET & BIB COMBO

FABRIC:

- W.P. 320D POLY TASLON

FEATURES:

- D.W.R. TREATMENT
- INSULATED HOOD
- FLEECE LINED
- BIB PANT
- REFLECTIVE PIPING

COLORS:

1. BLACK/BLACK BIN
2. GREY PEBBLE/BLACK BIB
3. OD/BLACK BIB
4. BLUE/BLACK BIB
5. BLACK GALAXY/BLACK BIB
6. BROWN CAMO/OD BIB
7. ASSORTED (BLK/BLUE)





2



4



5



1



3



6



7



BOY'S EDGE SET

94220-P KIDS (4-7)
94220-T TODDLER (2-4T)

INSULATED JACKET & BIB COMBO

FABRIC:
· W.P. 228T POLY TASLON

FEATURES:
· D.W.R. TREATMENT
· INSULATED HOOD
· FLEECE LINED
· BIB PANT
· REFLECTIVE PIPING

COLORS:
1. WHITE ACID/BLACK BIB
2. BLACK ACID/BLACK BIB
3. GREY CAMO/GREY BIB
4. OD CAMO/OD BIB
5. ORANGE CAMO/NAVY BIB

6. BLUE GALAXY/BLACK BIB
7. BLUE BRICK/BLACK BIB
8. ASSORTED (GREY CAMO/
ORANGE CAMO)

KIDS COVERALL

701-P KIDS (4-7)
701-T TODDLER (2-4T)
701-I INFANT (12M-24M)

INSULATED ONE PIECE SUIT

FABRIC:
· WP 320 D POLY TASLON

FEATURES:
· REMOVABLE HOOD
· INSULATED HOOD
· ARTICULATED KNEES
· FLEECE LINED
· REINFORCED KNEES

COLORS:
1. ROYAL
2. LILAC
3. ASSORTED

· CARGO POCKET
· GROW CUFF EXTENSION
· SNOW CUFFS



703-P KIDS (4-7)
703-T TODDLER (2-4T)
703-I INFANT (12M-24M)

QUILTED BUNTING

INSULATED ONE PIECE SUIT

FABRIC:

- WP POLYESTER

FEATURES:

- QUILTED INSULATION
- DWR COATING
- COVERED HAND MITTENS
- ELASTIC CUFFS
- ELASTIC HOOD

COLORS:

1. ANIMAL PRINT
2. NAVY DOTS
3. ASSORTED



706-T TODDLER (2-4T)
706-I INFANT (12M-24M)

WINTER BUNTING

INSULATED ONE PIECE SUIT

FABRIC:

- WP 320 D POLY TASLON

FEATURES:

- DWR COATING
- ZIPPER FROM NECK TO
- LOWER LEG
- ELASTIC HOOD
- COVERED CUFFS

COLORS:

1. MAGENTA BERRY
2. ROYAL COBALT
3. ASSORTED



705-P KIDS (4-7)
705-T TODDLER (2-4T)
705-I INFANT (12M-24M)

FINAL SUIT

INSULATED ONE PIECE SUIT

FABRIC:

- WP 320 D POLY TASLON

FEATURES:

- REMOVABLE HOOD
- INSULATED HOOD
- ARTICULATED KNEES
- FLEECE LINED
- REINFORCED KNEES
- CARGO POCKET
- GROW CUFF EXTENSION
- SNOW CUFFS

COLORS:

1. BLUE
2. PINK
3. ASSORTED



USA-540 BOOT BAG

DURABLE BOOT BAG

FABRIC:

- 600 D POLYESTER

FEATURES:

- WEBBED HANDLE
- WATER RESISTANT MATERIAL
- DOUBLE STITCHING
- OVERSIZE ZIPPER: EASY ACCESS
- BOTTOM PVC HARD SHELL
- 12 PC CASE PACK

COLORS:

1. BLACK

USA-547 SNOWBOARD COMBO

SNOWBOARD & BOOT BAG COMBO

FABRIC:

- 228 SNOW TAC TASLON POLY

FEATURES:

- ADJUSTABLE SIDE STRAP
- ACCOMMODATES 165CM
- WATER RESISTANT MATERIAL
- COMPRESSION STRAPS
- DOUBLE STITCHING
- FULL LENGTH ZIPPER
- PADDED HANDLE
- DISPLAY BOX
- 10 OC CASE PACK

COLORS:

1. BLACK





USA-545 SKI COMBO

ADJUSTABLE SKI & BOOT BAG

FABRIC:

- W.P. 320D POLY TASLON

FEATURES:

- ADJUSTABLE SIDE STRAP
- ACCOMMODATES 200CM
- WATER RESISTANT MATERIAL
- COMPRESSION STRAPS
- DOUBLE STITCHING
- FULL ZIPPER: EASY ACCESS
- PADDED HANDLE
- DISPLAY BOX
- 10 PC CASE PACK

COLORS:

- 1. BLACK



USA-510 PADDED SNOWBOARD

PADDED FULL ZIP SNOWBOARD BAG

FABRIC:

- 600 D POLYESTER

FEATURES:

- ADJUSTABLE SIDE STRAP
- 5 FOOT LENGTH / 152 CM
- WATER RESISTANT MATERIAL
- TARP LINED
- DOUBLE STITCHING
- FULL ZIPPER: EASY ACCESS
- REINFORCED WEB HANDLE
- ZIPPERED ACCESSORY POCKET
- 10 PC CASE PACK

COLORS:

- 1. BLACK



USA-520 PADDED SKI

ADJUSTABLE PADDED SKI BAG

FABRIC:

- 600 D POLYESTER

FEATURES:

- ZIPPERED ADJUSTABILITY
- ACCOMMODATES 160 - 190
- WATER RESISTANT MATERIAL
- COMPRESSION STRAPS
- DOUBLE STITCHING
- FULL ZIPPER: EASY ACCESS
- PADDED HANDLE
- VENTED TARP BOTTOM
- 10 PC CASE PACK

COLORS:

- 1. BLACK



USA-530 WHEELIE SNOWBOARD

PADDED WHEELED SNOWBOARD BAG

FABRIC:

- 600 D POLYESTER

FEATURES:

- REINFORCED TROLLEY SYSTEM
- ACCOMMODATES ANY BOARD
- DURABLE OXFORD POLYESTER WITH WATERPROOF BACKING
- INLINE SKATE WHEELS
- COMPRESSION STRAPS
- DOUBLE STITCHING
- 3/4 ZIPPER: EASY ACCESS
- PADDED HANDLE
- ZIPPERED ACCESSORY POCKET
- 2 RUBBER CARRY HANDLES
- 4 PC CASE PACK

COLORS:

- 1. BLACK

USA-535 WHEELIE SKI BAG

DOUBLE PADDED WHEELED SKI BAG

FABRIC:

- 600 D POLYESTER

FEATURES:

- REINFORCED TROLLEY SYSTEM
- DURABLE OXFORD POLYESTER WITH WATERPROOF BACKING
- INLINE SKATE WHEELS
- COMPRESSION STRAPS
- 3/4 ZIPPER: EASY ACCESS
- PADDED HANDLE
- ZIPPERED ACCESSORY POCKET
- COMFORT GRIP HANDLE
- HOLDS UP TO 190CM SKIS
- 2 PC CASE PACK

COLORS:

- 1. BLACK

**ASK ABOUT
NAME
DROPPING
YOUR OWN
BAGS**

***50 PC MIN**



- SNOWJ-MEN // Mens SIZE 7-13**
- SNOWJ-WOMEN // Womens by SIZE 5-10**
- SNOWJ-YTH // Youth SIZE 13-6**
- SNOWJ-KID // Kids SIZE 8-12**
- SNOWJ-INF // Infant SIZE 5-7**

SNOW JOGGER

ALL AGES INSULATED SNOW BOOT

FABRIC:
 · SYNTHETIC UPPER/ RUBBER SOLE

FEATURES:
 · RUGGED OUTER SOLE
 · VELCRO CLOSURE
 · INSULATED

COLORS:
 1. BLACK



- SNOWSF-WB // Women Boot SIZE (5-10)**
- SNOWSF-GB // Girls Boot SIZE (13-6)**
- SNOWSF-KB-ASST // Girls Boot SIZE (8-12)**

SNOWFLAKE

WOMEN / GIRLS SLIP ON BOOT

FABRIC:
 · SYNTHETIC UPPER/ RUBBER SOLE

FEATURES:
 · RUGGED OUTER SOLE
 · VELCRO CLOSURE
 · INSULATED
 · BERBER LINED UPPER

COLORS:
 1. BLACK
 2. PINK



- SNOWF-MZIP // Mens Boot SIZE (7-13)**
- SNOWF-YZIP // Youth Boot SIZE (13-6)**

SNOW RANGER

ZIPPERED INSULATED SNOW BOOT

FABRIC:
 · SYNTHETIC UPPER/ RUBBER SOLE

FEATURES:
 · RUGGED OUTER SOLE WITH ANTI SLIP
 · ZIPPERED CLOSURE
 · INSULATED
 · PADDED TONGUE

COLORS:
 1. BLACK



SNOW-DG-WB // Womens Boot SIZE (5-10)
SNOW-DG-YB // Girls Boot SIZE (13-6)

DURANGO

WOMEN MID CALF BOOT

FABRIC:

- SYNTHETIC UPPER/ RUBBER SOLE

FEATURES:

- RUGGED OUTER SOLE WITH ANTI SLIP
- FLEECE LINED
- 4 EYELET LACE UP CLOSURE
- INSULATED PADDED TONGUE
- PROTECTIVE TOE CAP
- PULL ON TAB
- TWO-TONE LACES

COLORS:

1. CHARCOAL
2. TAN



SNOWX-MB // Mens Boot SIZE (7-13)
SNOWX-YB // Boys Boot SIZE (13-6)

SLOWPLOW

MENS/ BOYS LACE-UP SNOW BOOT

FABRIC:

- SYNTHETIC UPPER/ RUBBER SOLE

FEATURES:

- RUGGED OUTER SOLE WITH ANTI SLIP
- 3 EYELET LACE UP CLOSURE
- INSULATED
- PADDED TONGUE
- PROTECTIVE TOE CAP

COLORS:

1. TAN
2. BLACK
3. CHOCOLATE





SNOW-S-MB // Mens Boot (7-13)
SNOW-S-YB // Youth Boot sizes (13-6)
SNOW-S-KB // Kids Boot sizes (8-12)

YETTI 2.0

REMOVABLE LINER SNOW BOOT

FABRIC:

- SYNTHETIC UPPER/ RUBBER SOLE

FEATURES:

- RUGGED OUTER SOLE WITH ANTI SLIP
- 4 EYELET LACE UP CLOSURE
- WATERPROOF TOE CAP
- BERBER LINED TRIM
- SYNTHETIC SUEDE UPPER
- PULL ON TAB
- REMOVABLE LINER

COLORS:

1. BLACK
2. DUCK

SNOW-ICE-MB // Mens Boot SIZE (7-13)
SNOW-ICE-YB // Boys Boot SIZE (13-6)

ICELANDER

MENS/ BOYS DELUXE WINTER BOOT

FABRIC:

- SYNTHETIC UPPER/ RUBBER SOLE

FEATURES:

- RUGGED OUTER SOLE WITH ANTI SLIP
- 6 EYELET LACE UP CLOSURE
- WATERPROOF TOE CAP
- SYNTHETIC SUEDE UPPER
- 200G PADDED INSULATION
- PADDED TONGUE

COLORS:

1. BLACK
2. BROWN

SNOW-FUR-WB // Women Boot SIZE (5-10)
SNOW-FUR-YB // Girls Boot SIZE (13-6)

SNOWFLURRY

WOMEN / GIRLS DELUXE WINTER BOOT

FABRIC:

- SYNTHETIC UPPER/ RUBBER SOLE

FEATURES:

- RUGGED OUTER SOLE WITH ANTI SLIP
- FAUX FUR TRIM
- 5 EYELET LACE UP CLOSURE
- WATERPROOF TOE CAP
- SYNTHETIC SUEDE UPPER
- 200G PADDED INSULATION
- PADDED TONGUE

COLORS:

1. BLACK
2. BUFF



SNOW-WB-WB // Womens Boot SIZE (5-10)
SNOW-WB-YB // Girls Boot SIZE (13-6)

WINTER BLISS

WOMEN / GIRLS MID RISE BOOT

FABRIC:

- SYNTHETIC UPPER/ RUBBER SOLE

FEATURES:

- RUGGED OUTER SOLE WITH ANTI SLIP
- 4 EYELET LACE UP CLOSURE
- ATHLETIC SOLE
- SYNTHETIC SUEDE UPPER
- 200G PADDED INSULATION
- SHERPA LINED
- PADDED TONGUE

COLORS:

1. BLACK



SNOWFB-WB // Womens Boot SIZE (5-10)
SNOWFB-YB // Girls Boot by SIZE (13-6)

SUGARLOAF

LACE-UP FUR TRIMMED SNOW BOOT

FABRIC:

- SYNTHETIC UPPER/ RUBBER SOLE

FEATURES:

- RUGGED ANTI SLIP SOLE
- LACE UP CLOSURE
- QUILTED INSULATION
- PROTECTIVE TOE CAP
- FAUX FUR TRIM

COLORS:

1. BLACK
2. IVORY



SNOW-SIENNA2-WB // Women Boot SIZE (5-10)

SIENNA II

WOMEN MID LACE UP CALF BOOT

FABRIC:

- SYNTHETIC UPPER/ RUBBER SOLE

FEATURES:

- FAUX WOOL / LEATHER UPPER
- RUGGED OUTER SOLE WITH ANTI SLIP
- 4 EYELET LACE UP CLOSURE
- WATERPROOF TOE CAP
- 200G PADDED INSULATION
- PADDED TONGUE
- FAUX FUR LINED

COLORS:

1. BLACK
2. TAUPE



SNOW-BUTTE-YB // Youth Boots (13-6)
SNOW-BUTTE-KB // Kids Boots (8-12)

SNOW-BUTTE-G-YB // Youth Boots (13-6)
SNOW-BUTTE-G-KB // Kids Boots (8-12)

SNOWT-FT-MB // MENS BOOT SIZE (7-13)
SNOWT-FT-YB // BOYS BOOT SIZE (13-6)

BOYS BUTTE BOOT

BUNGEE INSULATED KIDS BOOT

FABRIC:

- SYNTHETIC UPPER/ RUBBER SOLE

FEATURES:

- DURABLE OXFORD SHELL AND SYNTHETIC LEATHER FABRIC
- RUGGED OUTER SOLE WITH ANTI SLIP
- WATERPROOF TOE CAP
- EASY BUNGEE FASTENING
- INSULATED
- BERBER LINED
- PULL ON TAB

COLORS:

- 1. BLACK
- 2. OD
- 3. TAN

GIRLS BUTTE BOOT

BUNGEE INSULATED KIDS BOOT

FABRIC:

- SYNTHETIC UPPER/ RUBBER SOLE

FEATURES:

- DURABLE OXFORD SHELL AND SYNTHETIC LEATHER FABRIC
- RUGGED OUTER SOLE WITH ANTI SLIP
- WATERPROOF TOE CAP
- EASY BUNGEE FASTENING
- INSULATED
- BERBER LINED
- PULL ON TAB

COLORS:

- 1. BLACK
- 2. MAUVE
- 3. WINTER WHITE

FRONTIER

-20 DEGREE RATED SNOW BOOT

FABRIC:

- SYNTHETIC UPPER/ RUBBER SOLE

FEATURES:

- WATERPROOF: CRITICAL SEAM SEAL
- 200G THINSULATE @ INSULATION
- DWR COATING
- REMOVABLE FELT LINER
- SHERPA COLLAR
- RUGGED OUTER SOLE WITH ANTI SLIP
- PULL ON TAB

COLORS:

- 1. BLACK
- 2. BROWN



SNOWT-NL-YB // WOMENS BOOT SIZE (5-10)
SNOWT-YB-WB // GIRLS BOOT BY SIZE (13-6)

NOELLE

-20 DEGREE RATED SNOW BOOT

FABRIC:

- SYNTHETIC UPPER/ RUBBER SOLE

FEATURES:

- WATERPROOF: CRITICAL SEAM SEAL
- 200G THINSULATE® INSULATION
- DWR COATING
- REMOVABLE INSOLE
- FAUX FUR TRIM
- RUGGED OUTER SOLE WITH ANTI SLIP

COLORS:

1. TAN
2. GREY



SNOWT-SLT-KB-ASST KIDS (8-12) ASSORTED
SNOWT-SLT-YB-ASST YOUTH (13-6) ASSORTED

KIDS SLEET SEEKER BOOT

-20 DEGREE RATED SNOW BOOT

FABRIC:

- SYNTHETIC UPPER/ RUBBER SOLE

FEATURES:

- WATERPROOF: CRITICAL SEAM SEAL
- 200G THINSULATE® INSULATION
- DWR COATING
- REMOVABLE INSOLE
- BERBER LINED
- RUGGED OUTER SOLE WITH ANTI SLIP
- PULL ON TAB

COLORS:

1. BLACK
2. GREY CAMO
3. TEAL GEO OR TIE DYE GEO SWIRL



SNOW-PAL-IB-ASST INFANT (5-7) ASSORTED
SNOW-PAL-KB-ASST KIDS (8-12) ASSORTED
SNOW-PAL-YB-ASST YOUTH (13-6) ASSORTED

SNOWPAL BOOT

INSULATED W/ LINER SNOW BOOT

FABRIC:

- SYNTHETIC UPPER/ RUBBER SOLE

FEATURES:

- RUGGED OUTER SOLE WITH ANTI SLIP
- VELCRO CLOSURE
- INSULATED
- REMOVABLE FOAM LINER

COLORS:

1. BLUE
2. PINK



SNOW-IB-ASST // INFANT (5-7)
SNOW-KB-ASST // KIDS (8-12)
SNOW-YB-ASST // YOUTH (13-6)

GIRLS TOASTY BOOT

VELCRO INSULATED SNOW BOOT

FABRIC:

- SYNTHETIC UPPER/ RUBBER SOLE

FEATURES:

- RUGGED OUTER SOLE WITH ANTI SLIP
- VELCRO CLOSURE
- INSULATED
- FLEECE LINED

COLORS:

- 1. PINK (SOLID)
- 2. PINK DOT
- 3. BLACK DOTS
- 4. SILVER DOTS

SNOW-IB-ASST // INFANT (5-7)
SNOW-KB-ASST // KIDS (8-12)
SNOW-YB-ASST // YOUTH (13-6)

BOYS TOASTY BOOT

VELCRO INSULATED SNOW BOOT

FABRIC:

- SYNTHETIC UPPER/ RUBBER SOLE

FEATURES:

- RUGGED OUTER SOLE WITH ANTI SLIP
- VELCRO CLOSURE
- INSULATED
- FLEECE LINED

COLORS:

- 1. BLACK
- 2. OLIVE
- 3. BLUE
- 4. CAMO

AB04R09 GAITER

CROSS COUNTRY SNOW GAITER

FABRIC:

- W.P. 600 DENIER POLY

FEATURES:

- 17 INCH LENGTH
- FULL VELCRO CLOSURE
- ADJUSTABLE TOP TOGGLE CORD
- ADJUSTABLE TPU BOOT STRAP

COLORS:

- 1. BLACK
- 2. YELLOW
- 3. RED
- 4. BLUE
- 5. ASSORTED

F.Y.I.

SUGGESTED RETAIL

OUTERWEAR COMES WITH A SUGGESTED RETAIL TICKET PRICE

WARRANTY

ALL ITEMS COME WITH A ONE YEAR MANUFACTURER DEFFECTIVE WARRANTY FROM DATE OF ORIGINAL PURCHASE FROM PULSE/SPORTCASTER

The Construction: Unless noted otherwise all of our insulated or slightly insulated garments come with the following

STANDARD FEATURES:

- Waterproof /Breathable Materials
- Taped Seams
- Inner Technical Snow Skirt
- Inner Zip Pockets
- Feather Touch Insulation
- Inner Audio System Pocket
- Goggle Pocket
- Pit Zips
- Ninja Cuffs

CASE PACK:

- Men's, Ladies, Junior's, Preschool, Toddler, and Infants are packed 12 pieces per carton ASSORTED SIZES
- Plus Size (2-4X for Men and 1X-3X for Women) are packed 6 pieces per carton.
- By Size: Product can be ordered by size in qty's of 6 pc case packs.
- Men's and Ladies Pant and Jackets come solid color per case, unless otherwise noted.
- Junior's, Preschool, Toddler, and Infant Jackets come assorted colors and sizes
- Junior's, Preschool, Toddler, and Infants Pants come in solid color case pack

CLOTHING ASSORTMENT SIZING SCALE:

MENS	S/1	M/3	L/5	XL/3
PLUS SIZE MENS	2X/3, 3X/2, 4X/1			
LADIES	XS/1, S/3, M/4, L/3, XL/1			
LADIES PLUS	1X/3, 2X/2, 3X/1			
JUNIORS (8-18)	S/2	M/4	L/4	XL/2
PRESCHOOL (4-7)	S/4	M/4	L/4	
TODDLER (2T-4T)	2T/4	3T/4	4T/4	
INFANT	6M/4	12M/4	18M/4	

BOOT ASSORTMENT SIZING SCALE:

BIG KIDS: 1/13, 1/1, 2/2, 2/3, 2/4, 2/5, 2/6

LITTLE KIDS: 8/2, 9/2, 10/2, 11/3, 12/3

INFANT KIDS: 5/4, 6/4, 7/4

MENS ASST: 1EA 7&8, 3EA 9&10, 2/11, 1/12, 1/13

WOMENS ASST: 1EA 5, 2/6, 3/7, 3/8, 2/9, 1/10

TO ORDER CONTACT YOUR AREA REPRESENTATIVE
- call us toll free 800-848-9848
- support@worldfamoussports.com



 **Sportcaster**

pulse 

WORLD FAMOUS SPORTS
687 ANITA ST.
CHULA VISTA, CA. 91911

CALL YOUR AREA REP
619-231-4800 800-848-9848
support@worldfamoussports.com
WORLD FAMOUSSPORTS.COM



WORLD FAMOUS SPORTS