

SPRING PREMIUM OUTDOOR APPAREL 2024



WOMENS





EVERGREEN

S-800

2 LAYER RAIN JACKET

- POLYESTER
- FULLY TAPED SEAMS
- WATERPROOF
- WINDPROOF
- SUPERIOR BREATHABILITY
- WATERTIGHT MAIN ZIPPER
- ZIPPERED HAND POCKETS
- ZIPPERED CHEST POCKET
- ADJUSTABLE HOOD

COLORS:

GLACIER GREY/ WHITE, PLUM, TEAL

MANCHESTER 2.0

S-801

RAIN TRENCH COAT

- POLYESTER
- WATERPROOF BREATHABLE 228 TASLON
- CRITICAL TAPED SEAMS
- DWR COATING
- WINDPROOF
- DRAWCORD WAIST
- ADJUSTABLE STORM HOOD
- VELCRO FRONT CLOSURE W/ ZIPPER

COLORS:

IVORY, SLATE, SCOUT GREEN

CAMDEN

S-804

2.5 LAYER RAIN JACKET

- POLYESTER
- 2.5 LAYER FABRIC (LIGHTWEIGHT)
- WATERPROOF BREATHABLE
- FULLY TAPED SEAMS
- DWR COATING
- WINDPROOF
- ACTIVE FIT (SITS AT LOW HIP)
- ZIPPERED POCKETS
- ADJUSTABLE HOOD

COLORS:

STEEL BLUE, IVORY, PALE PINK, ASSORTED

**POD JACKET****S-807****PACKABLE SHELL RAIN JACKET**

- POLYESTER
- WATERPROOF
- WINDPROOF
- BREATHABLE
- 310T MINI RIPSTOP
- DWR COATING
- FULLY TAPED SEAMS
- PACKABLE INTO POCKET
- ZIPPERED POCKETS
- ADJUSTABLE HOOD

COLORS:

BLACK, BURGUNDY, GREY, LILAC, TEAL

**POD PANT****S-808****PACKABLE SHELL RAIN PANT**

- POLYESTER
- WATERPROOF
- WINDPROOF
- BREATHABLE
- 310T MINI RIPSTOP
- DWR COATING
- FULLY TAPED SEAMS
- PACKABLE INTO POCKET
- ZIPPERED POCKET

COLORS:

BLACK, BURGUNDY, GREY, LILAC, TEAL

**WILDFLOWER****S-809****PACKABLE WIND JACKET**

- POLYESTER
- LIGHTWEIGHT
- STOW AWAY HOOD
- WATER-REPELLENT
- BREATHABLE WINDPROOF
- SHELL
- ADJUSTABLE HEM AND HOOD
- ZIPPERED HAND POCKETS
- ELASTIC CUFF AND HEM

COLORS:

BLUE CAMO, LILAC, WHITE CAMO, LEMON



WINDGUARD

S-810

HOODED WINDBREAKER

- POLYESTER
- FULLY MESH LINED
- ADJUSTABLE HOOD
- HAND POCKETS
- WATER REPELLENT
- WINDPROOF
- DRAWCORD
- ELASTIC CUFFS

COLORS:

BLACK, GREY, ROBIN BLUE, ROSECLAY

SABRE SHELL

S-811

LIGHTWEIGHT STRETCH SHELL JACKET

- POLYESTER/SPANDEX
- WIND AND WATER RESISTANT
- BREATHABLE
- STRETCH FABRICATION
- ZIPPERED HAND POCKETS
- ZIPPERED CHEST POCKET
- DRAWCORD HEM
- COVERED HAND HEM

COLORS:

BLACK, METAL BLUE, SAGE, ROSE CLAY

FLINT PULLOVER

S-812

PACKABLE ANORAK

- POLYESTER
- WATER REPELLENT
- WINDPROOF
- MESH LINED
- DROP IN KANGAROO POCKET
- ADJUSTABLE HOOD
- ZIPPERED HAND POCKETS
- ADJUSTABLE HOOD
- ADJUSTABLE CUFFS

COLORS:

MALT BLUE, MALT/ASPALT, ASSORTED





DENIM

S-DENIM

RELAXED FIT DENIM JACKET

- COTTON
- LIGHTWEIGHT
- SOFT WASHED FABRIC
- DOUBLE CHEST POCKETS
- SIDE HAND POCKETS
- DOUBLE STITCH CONSTRUCTION
- BUTTON CUFF
- ADJUSTABLE BUTTON HEM

COLORS:

DENIM

CANVAS BOMBER

S-823

LIGHT WEIGHT CANVAS SHELL JACKET

- COTTON / SPANDEX
- MESH LINED
- RIB COLLAR AND CUFFS
- ZIPPERED CHEST POCKET
- ZIPPERED HAND POCKETS
- CUTE BOMBER CUT
- FLEXIBLE

COLORS:

BLACK, STONE, ASSORTED

BREEZE ACTIVE HOODIE

S-816

LIGHTWEIGHT STRETCH HOODIE

- POLYESTER / SPANDEX
- ACTIVE FIT
- ADJUSTABLE 3 PANEL HOOD
- THUMBHOLE CUFFS
- ZIPPERED HAND POCKET
- DROP IN MEDIA POCKET
- DROP TAIL HEM

COLORS:

HEATHER GREY, AQUA, LILAC

**GRAYTON**

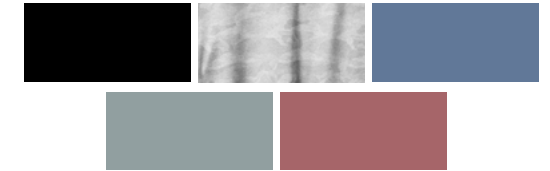
S-813

RELAXED FIT SWEATSHIRT

- COTTON; POLYESTER
- SOFT AND LIGHTWEIGHT
- WICKING
- SPANDEX CUFF AND HEM
- LARGE FRONT POUCH POCKET
- RELAXED FIT HEM OPENING

COLORS:

BLACK, GREY, SEAFOAM

**HILTON HEAD**

S-814

V-NECK HOODIE

- COTTON / SPANDEX
- WASHED VINTAGE FABRIC
- BUTTON V-NECK OPENING
- LARGE FRONT POUCH POCKET
- ADJUSTABLE HOOD
- CUTE CROSS STITCHING
- LOOSE COMFORTABLE FIT

COLORS:

WASHED BLACK, WASHED BLUE, ASSORTED

ODESSA FULL ZIP

S-815

RELAXED FIT FULL ZIP HOODIE

- POLYESTER/ELASTANE
- LIGHTWEIGHT, RELAXED FIT
- 4-WAY STRETCH
- DRAW CORD HOOD
- FULL ZIP
- MOISTURE WICKING
- PATCH HAND POCKETS
- RIBBED CUFF AND HEM

COLORS:

BLACK, GREY CAMO, AZURE, DUSTY CORAL, SEA GREY, MARSALA



ODESSA PULLOVER

S-818

RELAXED FIT HOODIE

- POLYESTER/ELASTANE
- LIGHTWEIGHT, RELAXED FIT
- MOISTURE WICKING
- 4-WAY STRETCH
- DRAWCORD HOOD
- PULLOVER
- QUICK DRYING
- UPF RATING

COLORS:

BLACK, GREY CAMO, AZURE, DUSTY CORAL, SEA GREY, MARSALA



TRAVELER HOODIE

S-819

UPF HOODED PULLOVER

- POLYESTER/SPANDEX
- LIGHTWEIGHT
- WICKING
- ULTIMATE STRETCH
- THUMBHOLE CUFFS
- UPF 50+
- OVERSIZED HOOD

COLORS:

BLACK, TEAL, BLUSH

**SUNSEEKER***S-820**UPF HIKING HOODIE*

- POLYESTER / SPANDEX
- DURABLE WAFFLE AIR HOLE FABRICATION
- LIGHTWEIGHT & WICKING
- ULTIMATE STRETCH
- THUMBHOLE CUFFS
- UPF 50+
- ZIPPERED HIDDEN POCKET
- HOOD WITH PONY TAIL SLIT

COLORS:*MINT, WHITE, TERRA COTTA***LOLO***S-822**LIGHTWEIGHT HYBRID VEST*

- POLYESTER/ELASTANE
- SLIGHT INSULATED
- SOFT SHELL SIDE PANELS
- WATER-REPELLENT
- WINDPROOF
- CONCEALED-ZIP HAND POCKETS

COLORS:*BLACK, LILAC, SEAFOAM***LENA TEE***S-QD-4842**WOMENS STRIPED TOP*

- POLYESTER/SPANDEX
- STRIPED TEE
- LOOSE FIT
- QUICK-DRYING

COLORS:*BLACK, WHITE, LILAC*



VENTURE V-TEE

S-QD-4841

PERFORMANCE V-NECK TEE

- POLYESTER/SPANDEX
 - QUICK-DRYING FABRIC
 - SOFT, COMFORT STRETCH
 - ANTIMICROBACTERIAL
- FUNCTION
 - UPF 30 PROTECTION

COLORS:

CHARCOAL, GREY, SILVER

VENTURE TEE

S-QD-4840

PERFORMANCE TEE

- POLYESTER/SPANDEX
 - QUICK-DRYING FABRIC
 - SOFT, COMFORT STRETCH
 - ANTIMICROBACTERIAL
- FUNCTION
 - UPF 30 PROTECTION

COLORS:

CHARCOAL, HEATHER GREY, SEA BLUE, ROSE CLAY, TERRA COTTA

PRINTED VENTURE

S-QD-4840-PRINT

PRINTED TEE SHIRT

- POLYESTER/SPANDEX
- QUICK-DRYING FABRIC
- SOFT, COMFORT STRETCH
- UPF 30 PROTECTION

COLORS:

ASSORTED PRINTS

**VENTURE TANK****S-QD-4830****PERFORMANCE TANK TOP**

- POLYESTER/COTTON
- WICKING FABRIC
- QUICK DRYING
- ANTIMICROBIAL FUNCTION
- UPF 30 PROTECTION
- COMFORT STRETCH
- EXTRA SOFT

COLORS:

CHARCOAL, HEATHER GREY, SEA BLUE, ROSE CLAY, TERRA COTTA

**TIOGA****S-QD-4837****PERFORMANCE CROPED TANK**

- POLYESTER/SPANDEX
- COMFORT STRETCH FABRIC
- QUICK-DRYING
- MOISTURE WICKING
- HIGH NECK LINE
- CROP LENGTH
- UPF 30 PROTECTION

COLORS:

BLACK, HEATHER GREY, MALT, AZURE, SEA GREY, MARSALA



MOVEMENT TANK

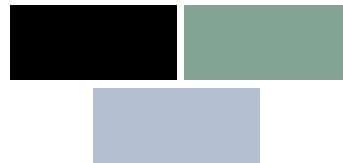
S-QD-4831

HIGH NECK LONG DROP TANK

- 100% POLYESTER
- WARP KNIT STRETCH FABRIC
- RACERBACK DESIGN
- LIGHTWEIGHT, WICKING MATERIAL

COLORS:

BLACK, BLUE DUSK, CORAL, HEATHER GREY



SPIRIT TANK

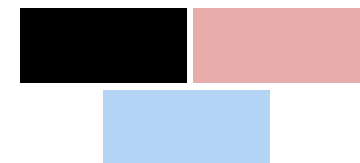
S-QD-4832

HIGH NECK CROP TANK

- POLYESTER/SPANDEX
 - QUICK-DRYING FABRIC
 - SOFT, COMFORT STRETCH
 - ANTIMICROBACTERIAL
- FUNCTION
 - UPF 30 PROTECTION

COLORS:

BLACK, MINT, BLUE, CORAL



SOL MAR

S-QD-4835

RELAXED FIT SLEEVELESS SHIRT

- POLYESTER/COTTON
 - WICKING FABRIC
 - QUICK DRYING
 - ANTIMICROBIAL FUNCTION
- UPF 30 PROTECTION
 - COMFORT STRETCH
 - EXTRA SOFT

COLORS:

BLACK, LILAC, CORAL, MINT



FLUTTER TANK

S-QD-4834

WOMENS REVERSIBLE TANK TOP

- POLYESTER/SPANDEX
- REVERSIBLE FROM V-NECK TO SCOOP NECK
- LIGHTWEIGHT
- ULTIMATE STRETCH
- WICKING FABRIC

COLORS:

BLACK, WHITE, LIGHT BLUE, ASSORTED



LAKESIDE SHORT SLEEVE

S-QD-4800

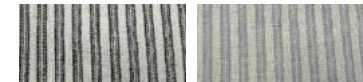
EMBROIDERED TEE SHIRT

- POLYESTER
- QUICK DRYING
- ANTIMICROBIAL FUNCTION
- UPF 30 PROTECTION
- BACK MESH VENT
- BUTTON CHEST POCKET

COLORS:

ASSORTED PLAIDS (2 PER PACK)





LAKESIDE LONG SLEEVE

S-QD-4810

PLAID ROLL UP

- POLYESTER
- QUICK DRYING
- ANTIMICROBIAL FUNCTION
- UPF 30 PROTECTION
- BACK MESH VENT
- BUTTON CHEST POCKET
- ROLL UP SLEEVE LOOPS

COLORS:

ASSORTED PLAIDS (2 PER PACK)

SUMMER COMFORT

S-QD-4801

TIE FRONT RELAXED LINEN BUTTON UP

- COTTON / POLYESTER
- LIGHTWEIGHT AND BREATHABLE
- DRAP FIT WITH TIE FRONT
- UPF 30 PROTECTION
- CHEST POCKET

COLORS:

DUSTY CORAL, WHITE FLOWER, BLUE FLOWER, GOLDEN ROD, ASSORTED

SHORECLUB

S-QD-4802

PULLOVER COVER UP

- COTTON / POLYESTER
- LIGHTWEIGHT AND BREATHABLE
- MANDARIN STYLE COLLAR
- V-NECK BUTTON FRONT
- SIDE OPENING HEM
- OVERSIZED COMFORT FIT
- CHEST POCKETS
- ROLL UP SLEEVE LOOPS

COLORS:

BLACK, BLUE, LAVENDER, ASSORTED

**QUEST SHORT SLEEVE****S-QD-4865****QUICK DRY SHORT SLEEVE SHIRT**

- 100% POLYESTER
- QUICK DRY RIPSTOP
- BREATHABLE FABRIC
- SHIRT COLLAR
- CHEST POCKETS WITH FLAPS
- BACK VENTILATION
- BUTTON CLOSURE

COLORS:

BONE, SAGE, CORAL, LINE PRINT, FILTERED BLUE, LILAC

**QUEST LONG SLEEVE****S-QD-4866****QUICK DRY LONG SLEEVE SHIRT**

- 100% POLYESTER
- QUICK DRY RIPSTOP
- BREATHABLE FABRIC
- SHIRT COLLAR
- BUTTON FRONT CLOSURE
- FRONT CHEST POCKETS WITH FLAPS
- BACK VENTILATION
- ROLL UP SLEEVES

COLORS:

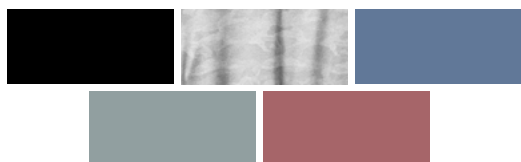
BONE, SAGE, CORAL, LINE PRINT, FILTERED BLUE, LILAC

**QUEST SLEEVELESS****S-QD-4867****QUICK DRY SLEEVELESS SHIRT**

- 100% POLYESTER
- QUICK DRYING, DURABLE FABRIC
- MOISTURE WICKING
- BREATHABLE VENTILATION
- WRINKLE RESISTANT
- LIGHTWEIGHT STRETCH

COLORS:

BLACK, WHITE, LILAC, ASSORTED



MOTION SHORT

S-QD-4849

ACTIVE LOUNGE PERFORMANCE SHORT

- POLYESTER/ELASTANE
- ULTIMATE STRETCH FABRIC
- 2.5" INSEAM
- JUNIOR FIT
- ELASTIC WAISTBAND W/ DRAW CORD
- SIDE HAND POCKETS

COLORS:

BLACK, GREY CAMO, AZURE, DUSTY CORAL, SEA GREY, MARSALA

SUNKISSED SHORT

S-QD-4850

ACTIVE SWEAT SHORT

- COTTON / POLYESTER
- 4" INSEAM
- COMFORT ELASTIC WAIST W/ DRAW CORD
- SIDE SLITS
- SIDE HAND POCKETS

COLORS:

BLACK, DUSTY BLUE, CORAL, TEAL, STONE

CAPITOLA 2.0

S-QD-4851

MID RISE QUICK DRY SHORT

- POLYESTER
- LIGHTWEIGHT STRETCH FABRIC
- 3.5" INSEAM
- SIDE HAND POCKETS
- REAR BACK POCKETS
- WIDE COMFORT ELASTIC WAIST W/ DRAW CORD

COLORS:

BLACK CAMO, LEOPARD, GEO PRINT, ASSORTED

**HUNTINGTON SHORT***S-QD-4860**ACTIVE CORDUROY SHORT*

- COTTON / SPANDEX
- STRETCH CORDUROY
- 4" INSEAM
- MID RISE
- SIDE HAND POCKETS
- REAR BACK POCKETS
- HIDDEN STOW POCKET
- RAW HEM

COLORS:

BLACK, TERRA COTTA, BASIL, ROYAL BLUE, CHESTNUT

**VENICE SHORT***S-QD-4861**VINTAGE WASHED STRETCH SHORT*

- NYLON / SPANDEX
- ELASTIC WAIST W/ DRAWCORD
- STRETCH MINI RIPSTOP
- 3" INSEAM
- MID RISE
- PATCH HAND POCKETS
- REAR BACK POCKETS
- RAW HEM

COLORS:

CHARCOAL, ARMY, ROSECLAY

**BOARDWALK SHORT***S-QD-4852**RIPSTOP STRETCH SHORT*

- POLYESTER/SPANDEX
- STRETCH MINI RIPSTOP
- 3" INSEAM
- MID RISE W/ 13" BACKRISE
- ELASTIC WAIST W/ DRAWCORD
- PATCH HAND POCKETS
- REAR BACK POCKETS

COLORS:

BLACK, ARMY, RUST, HAZEL



NIMBLE SHORT

S-QD-4853

ACTIVE STRETCH SHORT

- POLYESTER/SPANDEX
- LIGHTWEIGHT STRETCH FABRIC
- 4" INSEAM
- WIDE COMFORT STRETCH WAISTBAND
- UPF 50 PROTECTION
- MOISTURE WICKING
- SIDE HAND POCKETS
- REAR POCKET
- ZIPPERED STOW POCKET

COLORS:

BLACK, SCOUT GREEN, SAND, ASSORTED

CORE SHORT

S-QD-4862

CLASSIC FIT OUTDOOR SHORTS

- COTTON/ POLYESTER/ SPANDEX
- LIGHTWEIGHT STRETCH FABRIC
- 4.5" INSEAM
- FLAT FRONT WAIST
- PARTIAL ELASTIC REAR WAISTBAND
- MOISTURE WICKING
- SIDE HAND POCKETS
- REAR BACK POCKETS

COLORS:

GREY, SOAPSTONE, SAGE



QUEST SHORTS

S-QD-4870

QUICK DRY SHORTS

- POLYESTER/NYLON
- MINI QUICK DRY RIPSTOP
- BREATHABLE FABRIC
- HAND POCKETS
- BUTTON WAIST CLOSURE
- BACK POCKETS
- MESH POCKET LINING
- 5" INSEAM

COLORS:

KHAKI, SCOUT GREEN, CHARCOAL, ABALONE GREY

CADET SHORT

S-QD-4868

STRETCH ACTIVE FIT SHORT

- NYLON / SPANDEX
- STRETCH FABRIC
- 7" INSEAM
- UPF 50 PROTECTION
- MID RISE
- CURVED CONSTRUCTION
- SIDE HAND POCKETS
- ZIPPERED CARGO POCKETS

COLORS:

BLACK, ARMY, PUMICE



GUIDE SHORT

S-QD-4864

STRETCH ACTIVE FIT SHORT

- NYLON / SPANDEX
- STRETCH FABRIC
- 5.5" INSEAM
- UPF 50 PROTECTION
- GUSSETED CONSTRUCTION
- REGULAR RISE
- SIDE HAND POCKETS
- REAR BACK POCKETS
- LEG STOW POCKET

COLORS:

CHARCOAL, WASHED BLUE, STONE

MILLIE SHORT

S-QD-4871

STRETCH ACTIVE FIT LONG SHORT

- NYLON / SPANDEX
- STRETCH MINI RIPSTOP
- 7" INSEAM
- MID RISE
- INTERIOR DRAWCORD
- SIDE HAND POCKETS
- ZIPPERED STOW POCKET
- REAR BACK POCKETS

COLORS:

DARK SAGE, STONE, DUSTY BLUE

LAKESHORE SKIRT

S-QD-4859

STRETCH ACTIVE FIT SKIRT

- LIGHTWEIGHT STRETCH FABRIC
- QUICK DRY TREATMENT
- UPF PROTECTION
- WIDE COMFORT WAISTBAND
- MESH INNER SHORT
- 16.5" FRONT LENGTH
- 4" INNER SHORT INSEAM

COLORS:

BLACK, HAZEL, SCOUT GREEN

**NIMBLE SKIRT***S-QD-4863***ACTIVE STRETCH SKIRT**

- POLYESTER/SPANDEX
- LIGHTWEIGHT STRETCH FABRIC
- 16.5" FRONT LENGTH
- 4" INNER SHORT INSEAM
- UPF 50 PROTECTION
- MOISTURE WICKING
- WIDE COMFORT WAISTBAND
- RIBBED SIDE PANELS
- SIDE HAND POCKETS
- REAR BACK POCKET

COLORS:

BLACK, ROSE CLAY, KHAKI

**CINCH CAPRI***S-QD-4875***CONVERTIBLE STRETCH CAPRI**

- POLYESTER
- STRETCH FABRIC
- MID RISE
- LEG CINCH CONVERTS FROM CAPRI TO SHORT
- INTERIOR DRAWCORD
- SIDE HAND POCKETS
- HIDDEN ZIPPERED SIDE POCKETS
- REAR PATCH POCKETS

COLORS:

CHARCOAL, ARMY GREEN, ASSORTED

**ATHENA***S-QD-4882***QUICK DRY CAPRIS**

- STRETCH RIPSTOP FABRIC
- QUICK DRY
- BUTTON WAIST CLOSURE
- HAND POCKETS
- BACK POCKETS
- BELT LOOPS
- CORD HEMS

COLORS:

BLACK, CHARCOAL, STEEL BLUE, SAND



QUEST ZIP OFFS

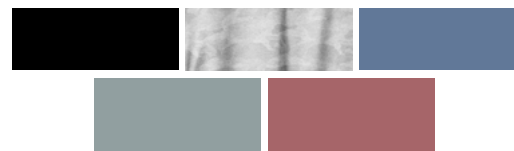
S-QD-4885

CONVERTIBLE QD PANT

- ZIP OFF PANTS
- 31" INSEAM
- MINI RIPSTOP
- QUICK DRYING BREATHABLE FABRIC
- SIDE ZIPPERED POCKET
- HAND /BACK POCKETS
- BUTTON WAIST CLOSURE

COLORS:

KHAKI, SCOUT GREEN, CHARCOAL



MOTION PANT

S-QD-4892

WOMENS PERFORMANCE JOGGER

- POLYESTER/ELASTANE
- RELAXED FIT
- DRAWSTRING WAISTBAND
- TWO POCKETS
- WIDE CUFF LEG

COLORS:

BLACK, GREY CAMO, AZURE, DUSTY CORAL, SEA GREY, MARSALA



RENEGADE JOGGER

S-QD-4893

- POLYESTER/SPANDEX
- LIGHTWEIGHT STRETCH FABRIC
- SIDE DROP IN CARGO POCKETS
- FLAT FRONT WAIST
- INTERIOR DRAWCORD
- UPF 50 PROTECTION
- SIDE HAND POCKETS
- REAR PATCH POCKETS
- ELASTIC JOGGER CUFFS

COLORS:

BLACK, BLACK CAMO, ARMY

**AMALFI PANT****S-QD-4894***RELAXED FIT ROLL UP PANT*

- POLYESTER TWILL
- LIGHTWEIGHT FABRIC
- 28" INSEAM (UNROLLED)
- 26" INSEAM (ROLLED)
- MID RISE
- FLAT WAIST FRONT W/ DRAWCORD
- ELASTIC SIDE PANELS
- SIDE PATCH POCKETS
- REAR BACK POCKETS

COLORS:

CHARCOAL, IVORY, ASSORTED

**BOARDWALK PANTS****S-QD-4888***RIPSTOP STRETCH PANTS*

- POLYESTER/SPANDEX
- MINI RIPSTOP STRETCH FABRIC
- UPF PROTECTION
- 2-WAY STRETCH
- 2 REAR POCKETS
- ELASTIC WAIST WITH DRAWCORD
- ZIPPERED MESH POCKETS
- 29" INSEAM
- 2 REAR POCKETS

COLORS:

BLACK, HAZEL, ARMY, BLACK CAMO, CAMO



Mens



**RUGGED RAINER****S-900****2.5 LAYER WATERPROOF JACKET**

- POLYESTER
- FULLY TAPED SEAMS
- WATERPROOF
- WINDPROOF
- SUPERIOR BREATHABILITY
- WATERTIGHT MAIN ZIPPER
- ZIPPERED HAND POCKETS
- ZIPPERED CHEST POCKET
- ADJUSTABLE HOOD

COLORS:

BLACK, CHARCOAL/BLACK, DUCK/BLACK

**CLOUDBURST 2.0****S-902****2.5 WATERPROOF JACKET**

- POLYESTER
- WATERPROOF BREATHABLE
- FULLY TAPED SEAMS
- DURABLE MINI RIPSTOP
- DWR COATING
- WINDPROOF

COLORS:

BLACK, MARINE, OLIVE

**PATHFINDER****S-903****2.5 LAYER RAIN JACKET**

- POLYESTER
- ULTRA LIGHT RIPSTOP
- 2.5 LAYER FABRIC, FULLY TAPED SEAMS
- WATERPROOF BREATHABLE
- DWR COATING
- PACKABLE INTO POCKET
- ARTICULATED CONSTRUCTION
- WATERPROOF ZIPPERS

COLORS:

BLACK, OLIVE DRAB, ASSORTED



SLICKER JACKET

S-905

WELDED TRICOT LINED RAIN JACKET

- POLYESTER/TRICOT
- 100% POLYESTER TAFFETA
- FULL PVC TAPING AND WELDING

COLORS:

BLACK, OLIVE, NAVY

SLICKER PANT

S-906

WELDED TRICOT LINED RAIN PANT

- POLYESTER/TRICOT
- 100% POLYESTER TAFFETA
- FULL PVC TAPING AND WELDING

COLORS:

BLACK, OLIVE, NAVY

SLICKER SET

S-909

WELDED TRICOT LINED RAIN JACKET AND PANTS

- POLYESTER/TRICOT
- 100% POLYESTER TAFFETA
- FULL PVC TAPING AND WELDING

COLORS:

BLACK, OLIVE, NAVY

**POD JACKET****S-907****PACKABLE SHELL RAIN JACKET**

- POLYESTER
- WATERPROOF BREATHABLE
- 310T POLY MINI RIPSTOP
- DWR COATING
- WINDPROOF
- FULLY TAPED SEAMS
- PACKABLE INTO POCKET

COLORS:

BLACK, ARMY GREEN, GREY, CRIMSON, BLUE

**POD PANT****S-908****PACKABLE SHELL RAIN PANT**

- POLYESTER
- WATERPROOF BREATHABLE
- 310T POLY MINI RIPSTOP
- DWR COATING
- WINDPROOF
- FULLY TAPED SEAMS
- PACKABLE INTO POCKET

COLORS:

BLACK, BLUE, ARMY GREEN, GREY, CRIMSON

*(4500)**(4700)***PRS****WATER PROOF SET**

- PVC TAPED SEAMS SHELL
- 2 PC SET PANT AND JACKET
- PACKABLE
- SIZES: M/2 L/4 XL/4 2X/2
- 3X AND 4X AVAILABLE
- 12 PCS PER CASE

COLORS:

CAMO, ARMY GREEN



MOSQUITO NET JACKET

S-MMJ

MOSQUITO NET JACKET

- POLYESTER
- MESH SLEEVES AND FACE
- BREATHABLE MICROFIBER
- ZIPPERED HOOD
- ADJUSTABLE WAIST AND WRIST

COLORS:

OLIVE

SPRING SOFT SHELL JACKET

S-1119

SOFT SHELL JACKET

- POLYESTER/SPANDEX
- STRETCH FABRICATION
- WATER RESISTANT
- WIND RESISTANT
- BREATHABLE
- MICRO FLEECE LINED
- ZIPPERED HAND POCKETS
- ZIPPERED CHEST POCKET
- DRAW CORD HEM

COLORS:

BLACK, SLATE, SAGE

TRAX BOMBER

S-921

BOMBER SHELL JACKET

- POLYESTER/SPANDEX
- STRETCH LINING
- WATER RESISTANT
- WIND RESISTANT
- STOW HOOD
- ZIPPERED HAND POCKETS
- ZIPPERED CHEST POCKET
- ELASTIC CUFFS AND HEM

COLORS:

BLACK, RED EARTH, MIGHT BLUE/BLACK

**TRUSTLE****S-904****RIPSTOP WINDBREAKER**

- WATER RESISTANT
- WIND RESISTANT
- ZIPPERED POCKETS
- RIPSTOP SHELL FABRIC
- DRAW CORD HOOD
- MESH LINED

COLORS:

BLACK, INDIGO, OLIVE

WINDGUARD**S-910****HOODED WINDBREAKER JACKET**

- POLYESTER
- FULLY MESH LINED
- ADJUSTABLE STOW HOOD
- HAND POCKETS
- WATER REPELLENT
- WINDPROOF
- ADJUSTABLE HEM

COLORS:

BLACK, BLUE, GREY, MOSS

LONE PINE FULL ZIP**S-912****FULL ZIP HYBRID HOODIE**

- POLYESTER/ELASTANE
- SOFT, STRETCH KNIT
- MOISTURE-WICKING FABRIC
- TASLON OVERLAY
- DRAW CORD HOODIE
- ZIPPERED POCKETS

COLORS:

BLACK, NAVY INK, ASSORTED



LONE PINE PULLOVER

S-916

PULLOVER SPRING HOODIE

- POLYESTER/ELASTANE
- SOFT, STRETCH KNIT
- MOISTURE-WICKING FABRIC
- EASY ACCESS HALF ZIP OPENING
- OVERSIZE KANGAROO POCKET
- ZIPPERED POCKETS
- HOODED

COLORS:

BLACK, NAVY INK, HEATHER GREY

TRAILHEAD PULLOVER 2.0

S-913

HALF-ZIP LIGHTWEIGHT PULLOVER

- POLYESTER/SPANDEX
- 4-WAY STRETCH MATERIAL
- MOISTURE-WICKING FABRIC
- ANTIMICROBIAL FUNCTION
- UPF 50 PROTECTION
- ZIPPERED STOW POCKET
- 1/4 ZIP OPENING
- THUMBHOLE SLEEVES

COLORS:

CHARCOAL, SEA GLASS, BURNT ORANGE

CREEK 1/4 ZIP

S-QD-4722

QUICK DRY 1/4 ZIP SHIRT

- POLYESTER / COTTON
- QUICK DRYING
- MOISTURE-WICKING FABRIC
- ANTIMICROBIAL FUNCTION
- UPF 20 PROTECTION
- CROSS STITCH CONSTRUCTION
- 1/4 ZIP OPENING

COLORS:

CHARCOAL, PRIVATE BLUE, POWDER BLUE



TELLURIDE SPRING VEST

S-914

LIGHTWEIGHT INSULATED VEST

- POLYESTER
- ABRASION RESISTANT
- QUILTED POLYESTER LINING
- DWR FABRIC SHELL
- CHEST POCKET
- LOWER SNAP BUTTON POCKET
- INNER HOOK-AND-LOOP POCKET
- ADJUSTABLE DRAW CORD

COLORS:

BLACK, MIDNIGHT BLUE, HUNTER GREEN, TRUFFLE



KEYS HOODIE

S-915

LONG SLEEVE PULLOVER HOODIE

- POLYESTER
- MOISTURE-WICKING FABRIC
- BREATHABLE OPEN-KNIT PANELS
- THUMBHOLE SLEEVES

COLORS:

HEATHER GREY, LODEN GREEN, PRIVATE BLUE, RUST



TRAVELER HOODIE

S-919

UPF HOODIE PULLOVER

- POLYESTER/SPANDEX
- UPF 50 PROTECTION
- 2 TONE KNITTED JERSEY
- ATTACHED HOOD
- BREATHABLE FABRIC
- STRETCH FABRIC
- FIT FOR RELAXED MOVEMENT

COLORS:

GREY, CAPE BLUE, SEA GLASS



SWAMIS

S-940

CHANGING PONCHO

- COTTON TERRY
- SOFT AND ABSORBENT
- HAND ACCESS POINTS
- OVERSIZED HOOD
- EASY ACCESS SNAP OPENING
- KANGAROO POCKET

COLORS:

AZTEC PRINT, GREY, ASSORTED

LAKESIDE SHORT SLEEVE

S-QD-4700

MEN'S PLAID QUICK DRY BUTTON-UP

- 100% POLYESTER
- ASSORTED PLAIDS
- QUICK DRYING
- ANTIMICROBIAL FUNCTION
- BACK MESH VENTS

COLORS:

ASSORTED

LAKESIDE LONG SLEEVE

S-QD-4710

MEN'S PLAID ROLL UP QUICK DRY SHIRT

- 100% POLYESTER
- ASSORTED PLAIDS
- QUICK DRYING
- UPF 30 PROTECTION
- BACK MESH VENTS
- LONG SLEEVE WITH ROLL UP LOOPS

COLORS:

MEN'S PLAID ROLL UP



ALOHA SHIRT

S-QD-4718

BUTTON UP VACATION SHIRTS

- COTTON/POLYESTER
- BREATHABLE
- UPF 30 PROTECTION
- CHEST POCKET
- RELAX FIT
- SHELL TEXTURED BOTTOMS

COLORS:

WHITE, GOLD, SALMON, GREEN, ASSORTED

VACATION SHIRT

QD-4717

BUTTON UP VACATION SHIRTS

- POLYESTER
- WICKING QUICK DRY
- SPF 30 PROTECTION
- CHEST POCKET
- BREATHABLE
- OVERSIZED FIT

COLORS:

BLACK FLORAL, BLUE FLORAL, CHARCOAL TIKI, ASSORTED

WEEKENDER

S-QD-4729

MODERN FIT BUTTON UP

- COTTON/POLYESTER
- WICKING QUICK DRY
- SPF 30 PROTECTION
- CHEST POCKET

COLORS:

BLACK, SAFARI BROWN, GREY, ASSORTED



KINDRED *S-4739*

MODERN FIT PERFORMANCE BUTTON UP

- POLYESTER/SPANDEX
- WICKING QUICK DRY
- SPF 30 PROTECTION
- CHEST POCKET

COLORS:

CHARCOAL, BLUE, TERRA COTTA, ASSORTED



AIRFLOW *S-QD-4730*

QUICK DRY S/S SHIRT

- POLYESTER
- PERMEABLE AIR FLOW FABRIC
- WICKING QUICK DRY
- UPF 20 PROTECTION
- CHEST POCKETS
- VENTED BACK

COLORS:

ASH, BLUE, CORAL REEF, WHITE



CROSS S/S *S-QD-4740*

QUICK DRY S/S SHIRT

- 2 TONE CROSS DYED POLYESTER
- QUICK DRY
- BREATHABLE FABRIC
- BUTTON FRONT
- SLEEVE CUFFS
- SNAP CHEST POCKET
- ZIPPERED CHEST POCKET
- VENTED BACK

COLORS:

CHARCOAL, MOSS, STEEL BLUE

**CROSS L/S***S-QD-4742***QUICK DRY ROLL UP SHIRT**

- 2 TONE CROSS DYED POLYESTER
- QUICK DRY
- ROLL UP SLEEVES
- BREATHABLE FABRIC
- BUTTON FRONT
- SLEEVE CUFFS
- CHEST POCKET

COLORS:

CHARCOAL, MOSS, STEEL BLUE

**JOURNEYMAN***S-QD-4721***BREATHABLE PANEL UTILITY SHIRT**

- POLYESTER
- MIXED MEDIA CONSTRUCTION
- PERMEABLE AIR FLOW SIDE PANELS
- MOISTURE WICKING
- UPF 30 PROTECTION
- VENTED BACK
- 3 CHEST POCKETS
- BUILT IN GLASS CLEANER

COLORS:

CHARCOAL, BLUE, OLIVE, SAND

**SOMERTON***S-QD-4716***BUTTON UP CAMP SHIRTS**

- 2 TONE POLYESTER
- WICKING QUICK DRY
- UPF 30 PROTECTION
- CHEST POCKETS
- SUBTLE WESTERN DESIGN
- PEARL SNAPS
- BUILT IN LENSE CLOTH
- REINFORCED BARTACK

COLORS:

BLACK, CHARCOAL, BURGUNDY, BLUE



FLATHEAD SHORT SLEEVE *S-QD-4718*

PERFORMANCE QUICK DRY WESTERN

- POLYESTER / SPANDEX
- STRETCH FABRIC
- QUICK DRY
- MOISTURE WICKING
- VENTED BACK
- PEARL SNAP FRONT
- CHEST POCKETS
- ZIPPERED STOW POCKET
- SUBTLE WESTERN DESIGN
- BUILT IN LENSE CLOTH

COLORS:

OLIVE, BURNT ORANGE, STONE PLAID,

FLATHEAD LONG SLEEVE *S-QD-4719*

PERFORMANCE QUICK DRY WESTERN

- POLYESTER / SPANDEX
- STRETCH FABRIC
- QUICK DRY
- MOISTURE WICKING
- VENTED BACK
- PEARL SNAP FRONT
- CHEST POCKETS
- ZIPPERED STOW POCKET
- BUILT IN LENSE CLOTH

COLORS:

OLIVE, CAMEL, BLUE PLAID

MONTANA *S-QD-4723*

PERFORMANCE DENIM SHIRT

- COTTON / SPANDEX
- SOFT WORN IN FABRIC
- DURABLE REINFORCED STITCHING
- PEARL SNAP FRONT
- CHEST POCKETS
- DOUBLE SNAP CUFFS
- SUBTLE WESTERN DESIGN
- BUILT IN LENSE CLOTH

COLORS:

DENIM, DARK DENIM, ASSORTED



QUEST S/S

S-QD-4745

SHORT SLEEVE QUICK DRY

- RIPSTOP POLYESTER
- BACK VENTILATION
- QUICK DRYING
- BREATHABLE FABRIC
- BUTTON FRONT
- CHEST POCKETS
- UPF PROTECTION

COLORS:

BONE, SAGE, STEEL BLUE, AQUA

QUEST L/S

S-QD-4747

ROLL UP SLEEVE QUICK DRY SHIRT

- RIPSTOP POLYESTER
- BACK VENTILATION
- QUICK DRYING
- BREATHABLE FABRIC
- BUTTON FRONT
- CHEST POCKETS
- ROLL UP SLEEVES W/ LOOPS
- UPF PROTECTION

COLORS:

BONE, SAGE, STEEL BLUE, AQUA



KEYS POLO

S-QD-4720

QUICK DRY POLO

- 100% POLYESTER
- MOISTURE-WICKING FABRIC
- BREATHABLE OPEN-KNIT PANELS
- UPF 25+/UPF 20+ PANELS

COLORS:

HEATHER GREY, LODEN GREEN, PRIVATE BLUE, RUST



MENS HIKER TANK

S-QD-4725

QUICK DRY / UPF TANK TOP

- POLYESTER/COTTON
- WICKING FABRIC
- QUICK DRYING
- ANTIMICROBIAL FUNCTION
- UPF 30 PROTECTION
- COMFORT STRETCH
- EXTRA SOFT

COLORS:

BLACK, GREY, SAGE, ADOBE RED, BLUE DUSK



MENS HIKER SLEEVELESS

S-QD-4727

QUICK DRY / UPF TANK TOP

- POLYESTER/RAYON
- WICKING FABRIC
- QUICK DRYING
- ANTIMICROBIAL FUNCTION
- UPF 30 PROTECTION
- COMFORT STRETCH
- EXTRA SOFT

COLORS:

BLACK, GREY, SAGE, ADOBE RED, BLUE DUSK



MENS HIKER SHORT SLEEVE S-QD-4735

QUICK DRY / UPF SHIRT

- POLYESTER/RAYON
- WICKING FABRIC
- QUICK DRYING
- ANTIMICROBIAL FUNCTION
- UPF 30 PROTECTION
- COMFORT STRETCH
- EXTRA SOFT

COLORS:

BLACK, GREY, SAGE, ADOBE RED, BLUE DUSK,



MENS HIKER LONG SLEEVE S-QD-4736

QUICK DRY / UPF SHIRT

- POLYESTER/RAYON
- WICKING FABRIC
- QUICK DRYING
- ANTIMICROBIAL FUNCTION
- UPF 30 PROTECTION
- COMFORT STRETCH
- EXTRA SOFT

COLORS:

BLACK, GREY, SAGE, ADOBE RED, BLUE DUSK



PRINTED VENTURE T-SHIRT S-QD-4735-PRINT

PRINTED UPF SHIRT

- POLYESTER/RAYON
- WICKING FABRIC
- QUICK DRYING
- ANTIMICROBIAL FUNCTION
- UPF 30 PROTECTION
- COMFORT STRETCH
- EXTRA SOFT

COLORS:

ASSORTED COLOR PRINTS



QUEST SHORT

S-QD-4749

QUICK DRY CARGO SHORT

- POLYESTER/NYLON
- QUICK DRYING FABRIC
- ADJUSTABLE BELT INCLUDED
- HAND POCKETS
- SIDE CARGO POCKET/ SIDE
- ZIPPERED POCKET
- 10.5" INSEAM
- BELT LOOPS
- MESH POCKET LINING

COLORS:

KHAKI, SCOUT GREEN, CHARCOAL, STONE

**QUEST PANT***S-QD-4773**QUICK DRY ZIP OFF PANT*

- POLYESTER/NYLON
- BREATHABLE FABRIC
- QUICK DRYING FABRIC
- ZIPPERED SIDE POCKET / CARGO POCKET
- ADJUSTABLE BELT INCLUDED
- HAND/BACK POCKETS
- CONVERTIBLE ZIP OFF INTO SHORTS
- 32" INSEAM

COLORS:*KHAKI, SCOUT GREEN, CHARCOAL, STONE***LA PLAYA SHORT-6"INSEAM***S-QD-4776-6***LA PLAYA SHORT-8"INSEAM***S-QD-4776-8**STRETCH SPORT SHORT*

- POLYESTER/SPANDEX
- BREATHABLE FABRIC
- 4 - WAY MECHANICAL STRETCH
- HAND POCKETS
- QUICK DRYING FABRIC
- BACK POCKET W/ FLAP
- ELASTIC WAIST

COLORS:*BLACK, ADOBE, BLUE DUSK, GUNMETAL, PRIVATE BLUE, ARMY***STONEBROOK SHORT***S-4772**QUICK DRY UTILITY SHORT*

- POLYESTER / SPANDEX
- UPF 50 PROTECTION
- STRETCH MATERIAL
- SIDE HAND POCKETS
- 10" INSEAM
- REAR BACK POCKETS
- ABRASION RESISTANT
- ZIPPERED STOW POCKET
- GUSSETED CONSTRUCTION
- DROP IN SIDE POCKET

COLORS:*CHARCOAL, KHAKI, GREEN GREY*



MOTION SHORT

S-QD-4779

MENS CASUAL SHORT

- POLYESTER/ELASTANE
- ULTIMATE STRETCH FABRIC
- 8" INSEAM
- LOOSE FIT
- ELASTIC WAISTBAND W/
 - DRAW CORD
 - SIDE HAND POCKETS
 - ZIPPERED REAR POCKET

COLORS:

BLACK, NAVY INK, HEATHER GREY, SEA GREY

CLÁSICO

S-QD-4770

COTTON UTILITY SHORT

- COTTON/SPANDEX
- COMFORTABLE STRETCH FIT
- ELASTIC WAISTBAND
- INTERIOR DRAWCORD
- SIDE POCKET
 - REAR POCKET
 - CLASSIC FIT

COLORS:

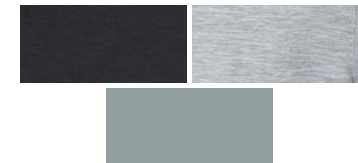
WASHED CHARCOAL, DARK WASHED KHAKI, WASHED ARMY

**HUNTINGTON SHORT***S-QD-4760**ACTIVE CORDUROY SHORT*

- COTTON / SPANDEX
- STRETCH CORDUROY
- 8.5" INSEAM
- RELAXED FIT
- ELASTIC WAIST W/ DRAWCORD
- SIDE HAND POCKETS
- REAR BACK POCKET

COLORS:*WASHED CARMEL, WASHED BLACK, ASSORTED***BOARDWALK SHORT***S-QD-4771**RIP STOP STRETCH SHORT*

- POLYESTER/SPANDEX
- STRETCH MINI RIPSTOP
- 9" INSEAM
- ELASTIC WAIST W/ DRAW CORD
- GUSSETED CONSTRUCTION
- SIDE HAND POCKETS
- REAR BACK POCKET
- ZIPPERED LEG STASH POCKET

COLORS:*BURNT OLIVE, CHARCOAL, STONE***MOTION PANT***S-QD-4753**STRETCH LIFESTYLE SWEAT PANT*

- POLYESTER/ELASTANE
- ULTIMATE STRETCH FABRIC
- RELAXED FIT
- ELASTIC WAIST W/ DRAW CORD
- SIDE HAND POCKETS
- OPEN LEG CUFF

COLORS:*BLACK, NAVY INK, HEATHER GREY, SEA GREY*

WORLD FAMOUS SPORTS



LA PLAYA PANT

S-QD-4797

STRETCH SPORT PANT

- POLYESTER/SPANDEX
- 4 - WAY MECHANICAL STRETCH
- QUICK DRYING FABRIC
- ELASTIC WAIST
- BREATHABLE FABRIC
- HAND POCKETS
- BACK POCKET W/ FLAP

COLORS:

BLACK, ADOBE, BLUE DUSK, GUNMETAL, PRIVATE BLUE, ARMY



ARCHES PANT

S-QD-4795

STRETCH SHELL PERFORMANCE PANT

- LIGHTWEIGHT WR FABRIC
- DWR TREATMENT
- UPF PROTECTION
- ARTICULATED KNEE
- GUSSETED CROTCH
- MULTIPLE ZIPPERED POCKETS
- DRAW CORD LEG CUFF

COLORS:

SLATE



Kids





CHARACTER RAIN COAT

S-400-PT

KIDS PRINTED SNAP UP RAIN COAT

- POLYESTER
- PACKABLE POUCH
- FRONT POCKETS
- FUN CHARACTER DESIGN
- HOOD WITH EARS

COLORS:

BEAR, FROG, STRAWBERRY, UNICORN



POD JACKET

S-807-JPT

PACKABLE SHELL RAIN JACKET

- POLYESTER
- WATERPROOF, BREATHABLE
- 310T POLY MINI RIPSTOP
- DWR COATING
- WINDPROOF
- FULLY TAPED SEAMS
- PACKABLE INTO POCKET
- ZIPPERED POCKETS

COLORS:

BLACK, BURGUNDY, GREY, LILAC, TEAL



POD PANT

S-808-JPT

PACKABLE SHELL RAIN PANT

- POLYESTER
- WATERPROOF, BREATHABLE
- 310T POLY MINI RIPSTOP
- DWR COATING
- WINDPROOF
- FULLY TAPED SEAMS
- PACKABLE INTO POCKET

COLORS:

BLACK, BURGUNDY, GREY, LILAC, TEAL

**WINDGUARD***S-810-JPT***HOODED WINDBREAKER**

- POLYESTER
- FULLY MESH LINED
- ADJUSTABLE HOOD
- HAND POCKETS
- WATER REPELLENT
- WINDPROOF
- DRAW CORD
- ELASTIC CUFFS

COLORS:

BLACK, GREY, ROBIN BLUE, ROSECLAY

**DENIM***S-DENIM-J***RELAXED FIT DENIM JACKET**

- COTTON
- LIGHTWEIGHT
- SOFT WASHED FABRIC
- DOUBLE CHEST POCKETS
- SIDE HAND POCKETS
- DOUBLE STITCH CONSTRUCTION
- BUTTON CUFF
- ADJUSTABLE BUTTON HEM

COLORS:

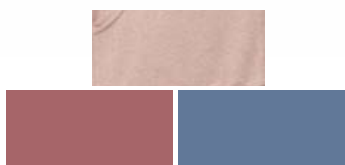
DENIM

**ODESSA FULL ZIP***S-815-J***RELAXED FIT FULL ZIP HOODIE**

- POLYESTER/ELASTANE
- LIGHTWEIGHT, RELAXED FIT
- MOISTURE WICKING
- 4-WAY STRETCH
- DRAW CORD HOOD
- FULL ZIP
- MOISTURE WICKING
- PATCH HAND POCKETS
- RIBBED CUFF AND HEM

COLORS:

BLACK, GREY CAMO, AZURE, DUSTY CORAL, SEA GREY, MARSALA



ODESSA PULLOVER

S-818-J

RELAXED FIT HOODIE

- POLYESTER/ELASTANE
- LIGHTWEIGHT, RELAXED FIT
- MOISTURE WICKING
- 4-WAY STRETCH
- DRAW CORD HOOD
- PULLOVER
- QUICK DRYING
- UPF RAITING

COLORS:

BLACK, GREY CAMO, AZURE, DUSTY CORAL, SEA GREY, MARSALA



TRAVELER HOODIE

S-819-JPT

UPF HOODED PULLOVER

- POLYESTER/SPANDEX
- LIGHTWEIGHT
- WICKING
- ULTIMATE STRETCH
- THUMBHOLE CUFFS
- UPF 50+
- OVERSIZED HOOD

COLORS:

BLACK, TEAL, BLUSH



TIOGA

S-QD-4837

PERFORMANCE CROPED TANK

- POLYESTER/SPANDEX
- COMFORT STRETCH FABRIC
- QUICK-DRYING
- MOISTURE WICKING
- HIGH NECK LINE
- CROP LENGTH
- UPF 30 PROTECTION

COLORS:

BLACK, HEATHER GREY, MALT, AZURE, SEA GREY, MARSALA

**VENTURE TANK***S-QD-4830-J**PERFORMANCE TANK TOP*

- POLYESTER/COTTON
- WICKING FABRIC
- QUICK DRYING
- ANTIMICROBIAL FUNCTION
- UPF 30 PROTECTION
- COMFORT STRETCH
- EXTRA SOFT

COLORS:

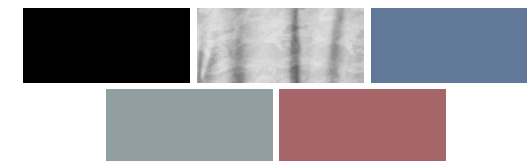
CHARCOAL, HEATHER GREY, SEA BLUE, ROSE CLAY, TERRA COTTA

**VENTURE TEE***S-QD-4840-J**PERFORMANCE TEE*

- POLYESTER/SPANDEX
- QUICK-DRYING FABRIC
- SOFT, COMFORT STRETCH
- ANTIMICROBACTERIAL
- FUNCTION
- UPF 30 PROTECTION

COLORS:

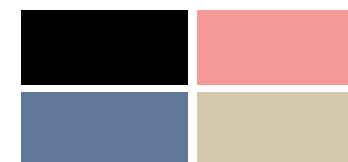
CHARCOAL, HEATHER GREY, SEA BLUE, ROSE CLAY, TERRA COTTA

**MOTION SHORT***S-QD-4849-J**ACTIVE LOUNGE PERFORMANCE SHORT*

- POLYESTER/ELASTANE
- ULTIMATE STRETCH FABRIC
- JUNIOR FIT
- ELASTIC WAISTBAND W/ DRAW CORD
- SIDE HAND POCKETS

COLORS:

BLACK, GREY CAMO, AZURE, DUSTY CORAL, SEA GREY, MARSALA



VENICE SHORT

S-QD-4861-J

VINTAGE WASHED STRETCH SHORT

- COTTON / POLYESTER / SPANDEX
- STRETCH MINI RIPSTOP
- MID RISE
- ELASTIC WAIST W/ DRAWCORD
- PATCH HAND POCKETS
- REAR BACK POCKETS
- RAW HEM

COLORS:

CHARCOAL, ARMY, ROSECLAY

BOARDWALK SHORT

S-QD-4852-J

RIPSTOP STRETCH SHORT

- POLYESTER/SPANDEX
- BREATHABLE FABRIC
- HAND POCKETS
- ELASTIC WAIST W/ DRAW CORD
- REAR POCKETS
- MESH POCKET LINING

COLORS:

BLACK, ARMY, RUST, HAZEL

SUNKISSED SHORT

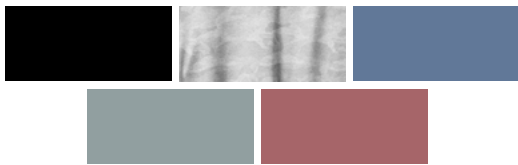
S-QD-4850-J

ACTIVE SWEAT SHORT

- COTTON / POLYESTER
- COMFORT ELASTIC WAIST W/ DRAW CORD
- SIDE SLITS
- SIDE HAND POCKETS

COLORS:

BLACK, DUSTY BLUE, CORAL, TEAL, STONE

**MOTION PANT***S-QD-4892-J**WOMENS PERFORMANCE JOGGER*

- POLYESTER/ELASTANE
- RELAXED FIT
- DRAWSTRING WAISTBAND
- TWO POCKETS

COLORS:*BLACK, GREY CAMO, AZURE, DUSTY CORAL, SEA GREY, MARSALA***STRETCH JEGGINGS***S-31688-PT**GIRLS JEGGINGS*

- COTTON/POLYESTER/RAYON/
SPANDEX
- STRETCHY DENIM
CONSTRUCTION
- FRONT AND BACK POCKETS

COLORS:*DARK WASH***COTTON STRETCH PANT***S-QW-21916-PT**UNISEX TWILL PANTS*

- COTTON
- SOFT KNIT
- DRAW CORD ELASTIC
WAISTBAND
- FRONT AND BACK POCKETS

COLORS:*DENIM, KHAKI*



TRUSTLE

S-904-JPT

RIPSTOP WINDBREAKER

- WATER RESISTANT
- WIND RESISTANT
- ZIPPERED POCKETS
- DRAW CORD HOOD
- MESH LINED

COLORS:

BLACK, INDIGO, OLIVE



POD JACKET

S-907-JPT

PACKABLE SHELL RAIN JACKET

- POLYESTER
- WATERPROOF BREATHABLE
- 310T POLY MINI RIPSTOP
- DWR COATING
- WINDPROOF
- FULLY TAPED SEAMS
- PACKABLE INTO POCKET

COLORS:

ARMY GREEN, GREY, BLACK, CRIMSON, BLUE



WINGUARD

S-910-JPT

HOODED WINDBREAKER JACKET

- POLYESTER
- FULLY MESH LINED
- ADJUSTABLE STOW HOOD
- HAND POCKETS
- WATER REPELLENT
- WINDPROOF
- ADJUSTABLE HEM

COLORS:

BLACK, GREY, MOSS, BLUE

**TRAVELER HOODIE***S-919-JPT**UPF HOODIE PULLOVER*

- POLYESTER/SPANDEX
- UPF 50 PROTECTION
- 2 TONE KNITTED JERSEY
- ATTACHED HOOD
- BREATHABLE FABRIC
- STRETCH FABRIC
- FIT FOR RELAXED MOVEMENT

COLORS:*GREY, CAPE BLUE, SEA GLASS***HIKER TANK***S-QD-4725-J**QUICK DRY / UPF TANK TOP*

- POLYESTER/COTTON
- WICKING FABRIC
- QUICK DRYING
- ANTIMICROBIAL FUNCTION
- UPF 30 PROTECTION
- COMFORT STRETCH
- EXTRA SOFT

COLORS:*BLACK, GREY, SAGE, ADOBE RED, BLUE DUSK***BOYS HIKER SHORT SLEEVE** *S-QD-4735-J**QUICK DRY / UPF SHIRT*

- POLYESTER/COTTON
- WICKING FABRIC
- QUICK DRYING
- ANTIMICROBIAL FUNCTION
- UPF 30 PROTECTION
- COMFORT STRETCH
- EXTRA SOFT

COLORS:*BLACK, GREY, SAGE, ADOBE RED, BLUE DUSK,*



QUEST SHORT

S-QD-4749-J

QUICK DRY CARGO SHORT

- POLYESTER/NYLON
- QUICK DRYING FABRIC
- ADJUSTABLE BELT INCLUDED
- HAND POCKETS
- SIDE CARGO POCKET/ SIDE
- ZIPPERED POCKET
- BELT LOOPS
- MESH POCKET LINING

COLORS:

KHAKI, SCOUT GREEN, CHARCOAL, STONE

QUEST PANT

S-QD-4773-J

QUICK DRY ZIP OFF PANT

- POLYESTER/NYLON
- QUICK DRYING FABRIC
- ADJUSTABLE BELT INCLUDED
- CONVERTIBLE ZIP OFF INTO SHORTS
- BREATHABLE FABRIC
- ZIPPERED SIDE POCKET / CARGO POCKET
- HAND/BACK POCKETS

COLORS:

KHAKI, SCOUT GREEN, CHARCOAL, STONE

SCOUT PANT

S-5774-JP

KIDS CONVERTIBLE ZIP OFF HIKE PANT

- POLYESTER / SPANDEX
- LIGHTWEIGHT STRETCH FABRIC
- ABRASION RESISTANT
- UPF 50 PROTECTION
- ZIPS OFF TO 8" INSEAM SHORT
- ELASTIC WAISTBAND
- SIDE HAND POCKETS
- REAR ZIPPERED POCKET

COLORS:

PRIVATE BLUE, KHAKI, SCOUT GREEN

**HUNTINGTON SHORT***S-QD-4760-J***ACTIVE CORDUROY SHORT**

- COTTON / SPANDEX
- STRETCH CORDUROY
- RELAXED FIT
- ELASTIC WAIST W/
- DRAWCORD
- SIDE HAND POCKETS
- REAR BACK POCKET

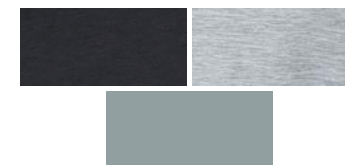
COLORS:*WASHED CARMEL, WASHED BLACK, ASSORTED***BOARDWALK SHORT***S-QD-4771-J***RIP STOP STRETCH SHORT**

- POLYESTER/SPANDEX
- STRETCH MINI RIPSTOP
- ELASTIC WAIST W/ DRAW CORD
- GUSSETED CONSTRUCTION
- SIDE HAND POCKETS
- REAR BACK POCKET
- ZIPPERED LEG STASH POCKET

COLORS:*BURNT OLIVE, CHARCOAL, STONE***CREST SHORT***S-5750-JPT***KIDS SHORT**

- POLYESTER/SPANDEX
- RIPSTOP FABRIC
- ELASTIC WAISTBAND
- QUICK DRY
- HAND POCKETS
- CARGO POCKET
- UPF 50 FABRIC

COLORS:*CHARCOAL, SAGE, ADOBE*



LA PLAYA SHORT

S-QD-4776-J

STRETCH SPORT SHORT

- POLYESTER/SPANDEX
- 4 - WAY MECHANICAL STRETCH
- QUICK DRYING FABRIC
- ELASTIC WAIST
- BREATHABLE FABRIC
- HAND POCKETS
- BACK POCKET W/ FLAP

COLORS:

BLACK, ADOBE, BLUE DUSK, GUNMETAL, PRIVATE BLUE, ARMY

MOTION SHORT

S-QD-4779-J

CASUAL SHORT

- POLYESTER/ELASTANE
- ULTIMATE STRETCH FABRIC
- LOOSE FIT
- ELASTIC WAISTBAND W/ DRAW CORD
- SIDE HAND POCKETS
- ZIPPERED REAR POCKET

COLORS:

BLACK, NAVY INK, HEATHER GREY, SEA GREY

MOTION PANT

S-QD-4753-J

STRETCH LIFESTYLE SWEAT PANT

- POLYESTER/ELASTANE
- ULTIMATE STRETCH FABRIC
- RELAXED FIT
- ELASTIC WAIST W/ DRAW CORD
- SIDE HAND POCKETS
- OPEN LEG CUFF

COLORS:

BLACK, NAVY INK, HEATHER GREY, SEA GREY



687 ANITA ST.
CHULA VISTA, CA 91911

(619) 231-4800
TOLL FREE (800) 848-9848
FAX (619) 231-1717

www.worldfamoussports.com
SUPPORT@WORLDFAMOUSSPORTS.COM

