



TOUCH  
SCREEN 7"



INTERNET  
OF THINGS



WIFI



USB



ETHERNET



DATA MATRIX



## COMPACT, PORTABLE CR80 METAL TAG EMBOSSEER WITH 2D DATA MATRIX OPTION

The **ME550 CR80 DATA MATRIX** is a portable metal tag embosser to mark alphanumeric characters and **2D DATA MATRIX** barcodes on **CR80** tag sizes (85,6 mm x 54 mm / 3.37" x 2.13") ideal for permanent marking of aluminum and stainless steel tags. The **2D DATA MATRIX** barcode has the great advantage of containing a high volume of data on limited space. With a 10% increase in production speed, a completely renewed design and new features, the **ME550 CR80 DATA MATRIX** is an advanced solution that can be integrated into any existing factory or office network.

### 7" color touchscreen display with high resolution

The **ME550 CR80 DATA MATRIX** is equipped with a built-in 7" WVGA LCD touchscreen display with simple and easy to use icon and buttons. The user can access and manage machine functions through a multi-level menu in an easy and intuitive way.

### IoT (Internet of Things) remote access and management

- **Web services:** The machine set-up and operations can be entirely managed remotely via the web or through the use of VNC (Virtual Networking Computing) client, using a personal computer or other devices connected to the Customer's network.

- **Data transfer:** Data import/export and the machine updating can be managed from any device connected to the embosser via Ethernet by using the FTP protocol (file transfer protocol).

### USB (type A, type B), Ethernet and WiFi

The **ME550 CR80 DATA MATRIX** can be connected to a personal computer, to load data and start production, or to another device, such as keyboard, barcode reader or other if needed.

The **ME550 CR80 DATA MATRIX** is a completely self-contained tag marking machine, and is ideal for component and production line identification and traceability applications. Designed to operate in harsh industrial environments and easy to transport.



USED BY

- AUTOMOTIVE PLANTS
- SHIPYARDS
- STEEL PLANTS
- INDUSTRIAL MANUFACTURERS
- LOGGING INDUSTRIES
- LOGISTICS MANAGEMENT
- POWER & UTILITY COMPANIES



IDEAL FOR

CR80 SIZE

# FEATURES AND SPECIFICATIONS

## MODEL NAME

ME550 CR80 DATA MATRIX

## PLATE AND FEEDER

Dimensions

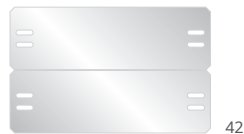
Metal plates: CR80 standard 85,6 x 54 mm - 3.37 x 2.13 in (WxH)



31



41



42



43

Materials

Alluminum, stainless steel

Thickness

Metal plates: 0,356 ÷ 0,70 mm / 0.014 ÷ 0.0275 in

Input hopper

Up to 120 plates capacity (0,4 mm / 0.0157 in)

Output hopper

External collection tray

## MARKING

Technology

Embossing or debossing

Wheel capacity

60 slots

Type set

Simplex 2, Block USA, Block 5, OCRB1

Embossing area

See picture

Performance

112 tags per hour based on 60 characters

## COMMUNICATION AND SOFTWARE

Interface

USB 2.0 port (device and host), Ethernet, WiFi

Software

Linux based self enclosed software

PowerTag PC application proprietary software Windows 7/8/10

PowerTag USB on USB key for multiple use

Protocol

Multiembosser

Optional: Cim, Xon-Xoff, Stored Format default, Stored Format Selected and Pound-Pound

## HARDWARE

System

CPU Arm Cortex-A8 / RAM 256 MB, with flash-disk and file system Linux O.S. based

Power supply

Universal switching power supply 100-240 volts; 50 or 60 hz

Power consumption

300 Watt max

Operating environment

Temperature: 5° ÷ 40°c / 41° ÷ 104° F, relative humidity 30% ÷ 90%

## VARIOUS

Others

Built in touch screen 7", multi-language user interface management: English, Spanish, Italian

Innovative embedded software up-grade system thru pen drive and web server

Interchangeable input hopper for easy charge and discharge of medical alert & dog tags

Machine configuration protected by password for high security and data protection

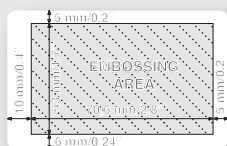
Easy to carry handle, no packaging required

## CERTIFICATIONS

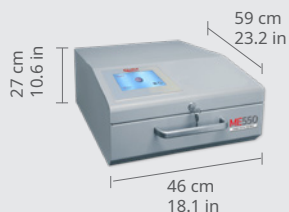
UL, FCC, CE, ROHS



EMBOSSING AREA



DIMENSION



WEIGHT

26 Kg / 57.3 lbs



SOFTWARE

power tag  
LITE  
optional  
power tag  
EVO