



TOUCH
SCREEN 7"



INTERNET
OF THINGS



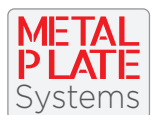
WiFi



USB



ETHERNET



COMPACT, PORTABLE CR80 METAL TAG EMBOSSE

The **ME550 CR80** is a portable metal tag embosser designed to manage **CR80** tag sizes (85,6 mm x 54 mm / 3.37" x 2.13") ideal for permanent marking of aluminum and stainless steel tags. With a 10% increase in production speed, a completely renewed design and new features, the **ME550 CR80** is an advanced solution that can be integrated into any existing factory or office network.

7" color touchscreen display with high resolution

The **ME550 CR80** is equipped with a built-in 7" WVGA LCD touchscreen display with simple and easy to use icon and buttons. The user can access and manage machine functions through a multi-level menu in an easy and intuitive way.

IoT (Internet of Things) remote access and management

- **Web services:** The machine set-up and operations can be entirely managed remotely via the web or through the use of VNC (Virtual Networking Computing) client, using a personal computer or other devices connected to the Customer's network.

- **Data transfer:** Data import/export and the machine updating can be managed from any device connected to the embosser via Ethernet by using the FTP protocol (file transfer protocol).

USB (type A, type B), Ethernet and WiFi

The **ME550 CR80** can be connected to a personal computer, to load data and start production, or to another device, such as keyboard, barcode reader or other if needed.

The **ME550 CR80** is a completely self-contained tag marking machine, and is ideal for component and production line identification and traceability applications. Designed to operate in harsh industrial environments and easy to transport.



USED BY

- AUTOMOTIVE PLANTS
- SHIPYARDS
- STEEL PLANTS
- INDUSTRIAL MANUFACTURERS
- LOGGING INDUSTRIES
- LOGISTICS MANAGEMENT
- POWER & UTILITY COMPANIES



IDEAL FOR

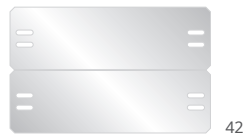
CR80 SIZE

FEATURES AND SPECIFICATIONS

MODEL NAME ME550 CR80

PLATE AND FEEDER

Dimensions Metal plates: CR80 standard 85,6 x 54 mm - 3.37 x 2.13 in (WxH)



Materials Aluminum, stainless steel
 Thickness Metal plates: 0,356 ÷ 0,70 mm / 0.014 ÷ 0.0275 in
 Input hopper Up to 120 plates capacity (0,4 mm / 0.0157 in)
 Output hopper External collection tray

MARKING

Technology Embossing or debossing
 Wheel capacity 60 slots
 Type set Simplex 2, Block USA, Block 5, OCRB1
 Embossing area See picture
 Performance 112 tags per hour based on 60 characters

COMMUNICATION AND SOFTWARE

Interface USB 2.0 port (device and host), Ethernet, WiFi
 Software Linux based self enclosed software
 PowerTag PC application proprietary software Windows 7/8/10
 PowerTag USB on USB key for multiple use
 Protocol Multiembosser
 Optional: Cim, Xon-Xoff, Stored Format default, Stored Format Selected and Pound-Pound

HARDWARE

System CPU Arm Cortex-A8 / RAM 256 MB, with flash-disk and file system Linux O.S. based
 Power supply Universal switching power supply 100-240 volts; 50 or 60 hz
 Power consumption 300 Watt max
 Operating environment Temperature: 5° ÷ 40°c / 41° ÷ 104° F, relative humidity 30% ÷ 90%

VARIOUS

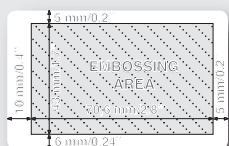
Others Built in touch screen 7", multi-language user interface management: English, Spanish, Italian
 Innovative embedded software up-grade system thru pen drive and web server
 Interchangeable input hopper for easy charge and discharge of medical alert & dog tags
 Machine configuration protected by password for high security and data protection
 Easy to carry handle, no packaging required

CERTIFICATIONS

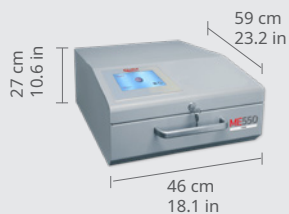
UL, FCC, CE, ROHS



EMBOSSING AREA



DIMENSION



WEIGHT

26 Kg / 57.3 lbs



SOFTWARE

power tag
 LITE
 optional
power tag
 EVO