

296 Freeport Street
Dorchester, MA 02122

215 Worcester Road
Framingham, MA 01701

548 Washington Street
Hanover, MA 02339



Specifications for Project
DiGregorio Corporation, Anthony DiGregorio 29 Narragansett
Avenue Jamestown, RI 02835

Yale Appliance realizes that our customers have many options where to buy the products we sell. We are confident that our full-service Sales, Delivery, Service repair and Installation services are second to none and the true difference maker when making your final decision. We promise to work tirelessly on your behalf and appreciate the opportunity to earn your business.

548 Washington Street
Hanover
6178226173

Stan Pendrak
stan.pendrak@yaleappliance.com

i REMINDER: To ensure a smooth project it is the responsibility of the homeowner / purchaser of appliances for this project to share all the attached specifications to ensure the cabinet provider, contractor, or any other tradesperson have all the information required to complete their work accurately.

Specifications are subject to change. If any tradesperson has questions regarding the attached specifications please contact our sales associate. Please also realize that Yale Appliance and Lighting does not install, disconnect appliances or modify cabinets in any way as part of standard normal delivery. Yale does offer for specific installations options at an additional charge. Please contact salesperson for details.

Powered by SteelCod

DiGregorio Corporation, Anthony
DiGregorio 29 Narragansett Avenue
Jamestown, RI 02835

DiGregorio Corporation, Anthony DiGregorio
29 Narragansett Avenue
Jamestown, RI 02835



<i>Contents</i>	<i>Page no.</i>
BH148RSL DCS Outdoor	3-5
CAD148E DCS Outdoor	6
WPD38I48SB BEST Ventilation Pro-style Outdoor Range Hood	7-9

Yale Appliance

yaleappliance.com

Stan Pendrak

6178226173

Document **YS00486335-3**

Version 1.1

Fri, Feb 3, 2023

2:15 PM EST



enterprise.steelcod.com/sp/yale/0ZX2ODBY

Note about page numbers:

Because the original manufacturer's documents are not altered in any way, the page numbers displayed on the page may not correspond to the page number within this package.

All specifications are intended for initial planning purposes only.

Manufacturers reserve the right to change specifications at any time without notice. Always consult the installation instructions found on the manufacturer's website or included with the appliances before installation.



BH1-48RS-L

48" Traditional Grill with Rotisserie and Side Burners

Designed with flexibility in mind, DCS Grills allow you to cook a wide variety of meals and are engineered to deliver the functionality and power demanded by a professional chef. DCS Grills are hand-finished to perfection to complement the quality of the DCS premium outdoor kitchen and built to withstand the demands of the serious cook and the extremes of mother nature. Available in Natural and LP Gas. Grill Cart pictured sold separately.

Brushed Stainless Steel

24/7

A PEACE OF MIND SALE

24 Hours 7 Days a Week Customer Support
T 1.888.936.7872 W dcsappliances.com

Dimensions

Depth	27 5/16"
Height	24 1/4"
Width	53 3/8"

Features & Benefits

Precision heat and control

A DCS Grill puts you in control of up to a massive 126,500 BTU per hour total power. That power lets you choose the precise heat you need from a low and slow 300° up to an intense 1100°. DCS Grills do more than help you grill an incredible steak, you can infuse smoke into your favorite meal using the built in smoker, or close the specially designed hood and use the power of convection to cook the perfect pizza. DCS Grills put you in control, giving you the versatility to cook what you want.

Double-sided Cast Stainless Steel Grates

One side has a gentle radius for handling delicate foods. The other side is W-shaped for perfect sear lines while channeling oil away to an easily removable drip tray.

Grease Management System™ Grease Channeling Technology

This patented technology reduces flare-ups by directing grease and oils away from the burner flames during grilling.

Smart Beam™ Grill Light

A halogen light is designed to illuminate the entire cooking surface for perfect night grilling.

Temperature Gauge - zero to sear

Go from zero to sear with DCS Grills' new built-in temperature gauge. It lets you know exactly how hot the grill is, even when the hood is down.

Dedicated Sealed Smoker

A dedicated smoker tray with a direct 3,500BTU burner offering a clean, convenient option for specialized smoking recipes.

Rotisserie made easy

Inspired by our commercial heritage, DCS Rotisserie Grills are the perfect package of robust construction, powerful motor, consistent temperatures and strong forks. DCS Rotisserie Grill models feature a dedicated infrared rotisserie burner, providing controlled searing up to 14,000 BTU per hour. The heavy-duty motor allows you to load your Thanksgiving turkey (and more!), while the Smart Beam™ Grill Light illuminates the entire cooking surface for perfect night grilling. Load up your new DCS Grill's rotisserie then sit back and let the grill do the work.

Drip Pan

DCS Grills feature a removable drip pan, conveniently located in a slide-out tray to allow for easy cleaning.

Direct Burner Ignition

An ergonomic ignition solution, where burners are lit directly from the corresponding knobs.

Ceramic Radiant Technology

A layer of ceramic rods provides intense yet even heat. It gives a consistent grilling surface, with controlled heat rather than direct fire.

Full Surface Searing

This grill features full surface searing, rather than uneven hotspots.

Stainless Steel Burners

The precision ported U-shaped stainless steel burners are rated at a massive 25,000BTU each, offering premium quality and performance. A heat shield directs heat upwards maximizing heating efficiency.



Real steel - inside out

Assembled by hand from heavy duty 304 stainless steel, inside and out, DCS Grills are built to handle most everything Mother Nature can throw at them.

Lifetime warranty

Built to last a lifetime, DCS grills are robust and durable. They come with a lifetime warranty on their stainless steel grill burners and hood, burner box, cooking grates and grill racks*. Choose DCS, the grill you can trust. * Lifetime warranty excludes discoloration or surface corrosion. For complete DCS Grill Warranty refer to Use & Care Guide.

Specifications

Accessories sold separately

Optional cart-mount	CAD1-48
Optional griddle plate	BGC-GP
Optional hybrid IR burner	BGC-IR

Cooking surface area

Cooking surface area	1115sq. in.
Primary cooking area (grill)	630sq. in.
Side burner area	244 sq. in.
Warming rack area	241sq. in.

Cut

Cutout depth	22 3/4 "
Cutout height	10 1/8 "
Cutout width	45 3/4 "

Insulated jacket (different cut-outs needed-check manual) **BGA48-IJS (optional)**

Finish

Built in	•
Finish	304 grade stainless steel
Optional cart-mount	CAD1-48
Weather resistant	•

Gas Requirements

1/2" in NPT male with 3/8" in flare adapter	•
Gas requirements	LP
LP hose with regulator and Type 1 connector is shipped connected	•
Operational Pressure	11" W.C.
Supply Pressure	12" to 14" W.C.

Grill Features

- Double sided stainless steel grilling grates (36" & 48" models only)
- Full surface searing
- Grease Management System™
- Hood temperature gauge
- Metal dials
- One-step direct burner ignition
- Rotisserie
- Side burners
- Smoker
- Warming rack

Measurements

Shipping weight	353 LBS
-----------------	---------

Performance

Max weight rotisserie	50 LBS
Number of U-burners	3
Number of side burners	2
Rotisserie burner power in BTU	14,000
Side burner power in BTU	17,000
Smoker burner power in BTU	3,500
Total power in BTU	126,500
U-burner power in BTU	25,000

Power Requirements

Power Requirements	9V battery for ignition
Rotisserie power supply	120V 60Hz

Warranty

Warranty **Limited 2 years part & labor**

SKU	71298
-----	-------

The product dimensions and specifications in this page apply to the specific product and model. Under our policy of continuous improvement, these dimensions and specifications may change at any time. You should therefore check with Fisher & Paykel's Customer Care Centre to ensure this page correctly describes the model currently available. © 2017 DCS by Fisher & Paykel Appliances Limited

Other product downloads available at dcsappliances.com



Locating Built-in Clearances

IMPORTANT!

Gas fittings, regulator, and installer supplied shut-off valves must be easily accessible.

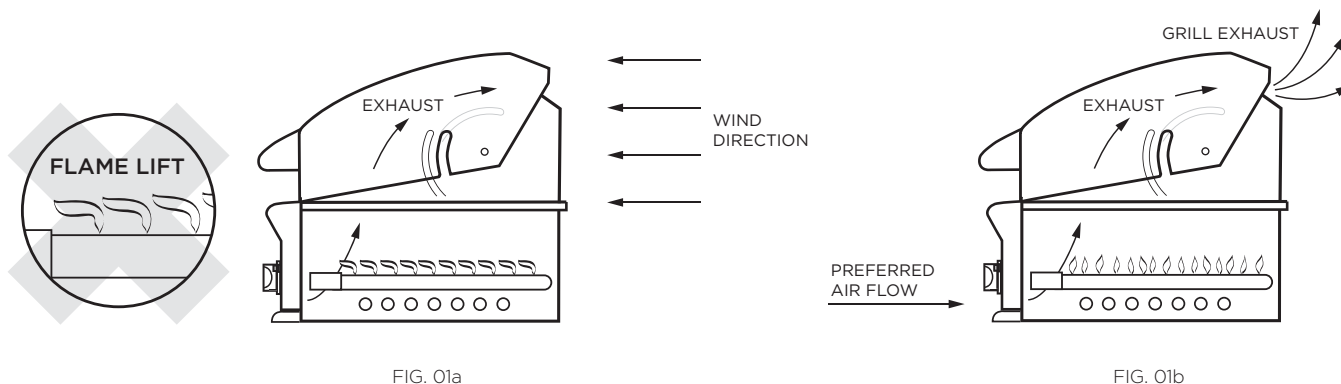


FIG. 01a

FIG. 01b

Wind hitting the grill while in use, (especially wind blowing into or across the hood gap) can cause poor performance and in some cases can cause the control panel to get dangerously hot.

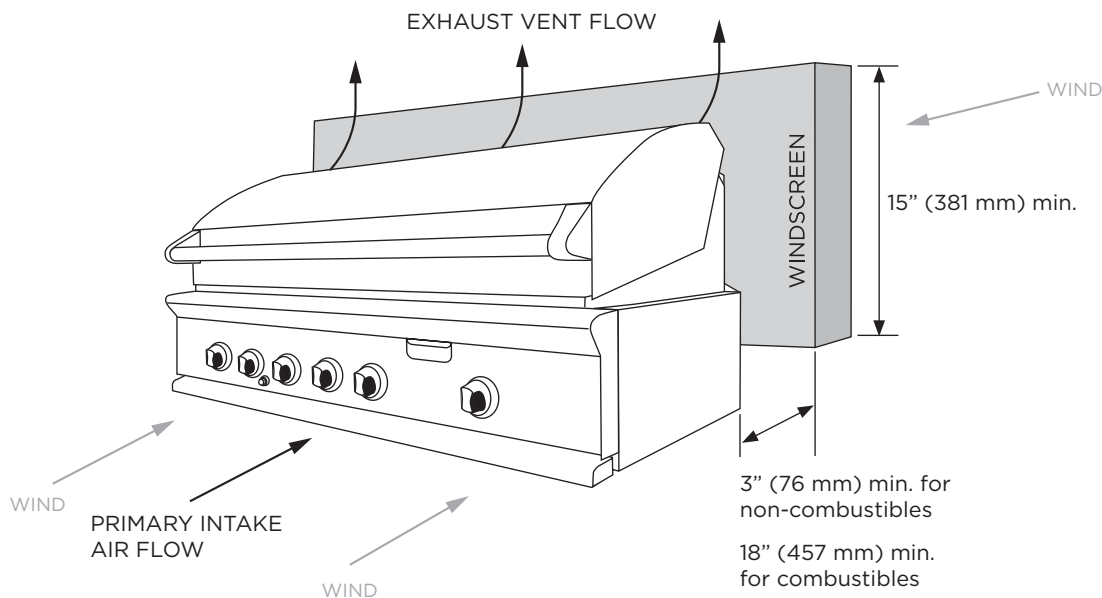


FIG. 01c

If wind is an issue, a windscreen should be added. The windscreen should be higher than the top of the opening in the back of the grill, with a minimum clearance of 3" (76mm) for non-combustibles, or 18" (457mm) for combustibles, from the back of the grill.



CAD1-48E

48" Cad Grill Cart, Series 9

DCS Freestanding Grills combine the DCS Grill head unit with a transportable DCS Cart. The versatile DCS Cart comes in a range of sizes to suit your grill head, creating a compact outdoor kitchen solution wherever you choose.

Brushed Stainless Steel

Dimensions

Depth	25 1/2"
Height	35 1/2"
Width	47 15/16"

Features & Benefits

Handy accessories

The optional side shelf kits offer a sturdy preparation or resting space, and fold down easily when not in use. Brazillian Cherry wood inserts can be added to the side shelves, creating convenient chopping board surfaces.

Flexible storage

Featuring multiple storage compartments, the cart provides easy access to your condiments, smoker wood chips, serving trays or grill covers. A series of Cart accessories offer maximum flexibility - the LP tank drawer can be converted into a two-bin trash drawer or simply a large capacity storage drawer.

Premium quality design

Constructed from 304 grade stainless steel, and superior weld and finish, DCS Carts are built to last.

Family match

The neutral stainless steel finish, refined handle profile and consistent detailing ensure DCS Built-in Products will install seamlessly into your desired countertop and cabinetry material palette.

Specifications

Finish

Finish 304 grade stainless steel

Weather resistant

Optional accessories

Adjustable leveling feet making stationary cart	CAD-LVL
Side shelf kit	CAD-SK
Tank drawer bottom cover	TDBC-ADR1CAD
Wastebasket holder	WBH-ADR1CAD

Warranty

Material & labor 2 years

SKU 71408

The product dimensions and specifications in this page apply to the specific product and model. Under our policy of continuous improvement, these dimensions and specifications may change at any time. You should therefore check with Fisher & Paykel's Customer Care Centre to ensure this page correctly describes the model currently available. © 2019 DCS by Fisher & Paykel Appliances Limited

Other product downloads available at dcsappliances.com

24/7

A PEACE OF MIND SALE
24 Hours 7 Days a Week Customer Support
T 1.888.936.7872 W dcsappliances.com

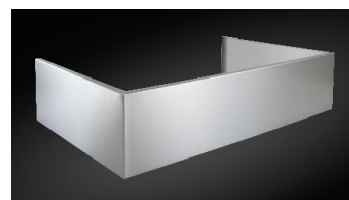




WPD38I Series

This UL-Rated Outdoor Pro-Style hood is constructed with brushed corrosion-resistant stainless steel to ensure long life in outdoor areas. This hood will remain a beautiful addition to your outdoor kitchen for many years to come.

- Powered by internal blower system with 1300 MAX blower CFM. Quiet 2.0 sones at normal setting.
- 4-speed rotary control with separate On/Off speed control gives you the convenience of automatically remembering last setting.
- One-level LED cooktop lighting. (Bulbs included.)
- Easily accessible, dishwasher-safe corrosion-resistant stainless steel baffle filters with handles.
- Optional corrosion-resistant flue cover attaches to the top of the range hood.

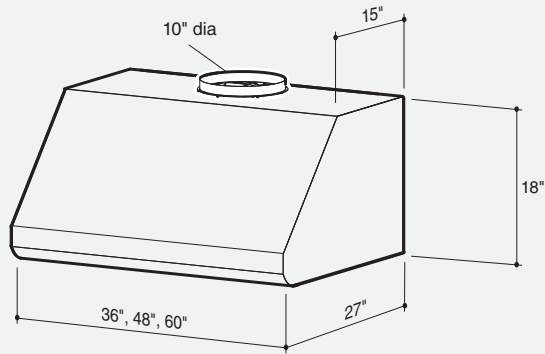


best[®]
PERFORMANCE THAT INSPIRES

At **BEST**, we make high performance range hoods that perform beautifully. Astonishingly quiet. Impressively effective. Remarkably efficient. And perfectly suited for the most distinguished kitchens.

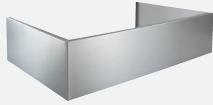
Whether it's the centerpiece of the room or letting its surroundings shine, **BEST** is where high-end performance inspires.

Installation height above the cooking surface: 36"



Standard Flue Cover

Corrosion-resistant flue cover in professional-grade stainless steel attaches to the top of the range hood shell. Available in 30"-54" telescopic heights.



- Telescopic 30"-54" = 10'-12' ceiling

HOOD SIZES*

Internal Blower, Dual — Depth: 27"

36" WPD38I36SB

48" WPD38I48SB

60" WPD38I60SB

* For exact dimensions, please refer to the technical drawing of each model.

FEATURES

Finish	Corrosion-Resistant Stainless Steel (Grade 304)
Lighting Type	LED, 6 W, GU10, R16
Number of Lamps	2 on 36" 3 on 48" and 60"
Lighting Level	1
Lighting Lamps Included	Yes
Control Type	4-speed, Rotary, Illuminated ON/OFF Indicator
Control Features	Heat Sentry™
Remote Control	Not Available
Filter Type	304 Stainless Steel Baffle
Non-ducted Capability	No

HOOD BLOWER INCLUDED WPD38I

Internal	
Max Blower CFM*	1300

ACCESSORIES

Flue Cover (Standard Depth) 30"-54" AEWPD3054SB

INSTALLATION REQUIREMENTS

Amps @ 120 V	9.0 Max
Electrical Connection	Direct Wire
Duct Size: Internal Blower	10"
Duct Direction	Vertical
Backdraft Damper	Not Included

*MAX Blower CFM indicates the performance of the hood blower in open air and is not HVI certified.

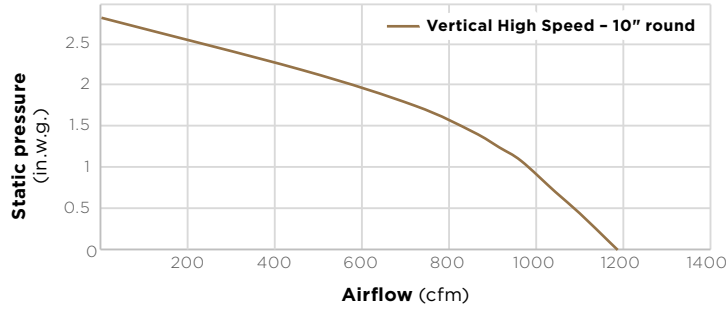
HVI PERFORMANCE

INTERNAL BLOWERS, DUAL - WPD38I

Sones	
Normal Speed 2.0	High Speed 11.0

CFM	
Normal Speed 430	High Speed 1160

AIRFLOW PERFORMANCE



HVI-2100 CERTIFIED RATINGS comply with new testing technologies and procedures prescribed by the Home Ventilating Institute, for off-the-shelf products, as they are available to consumers. Product performance is rated at 0.1 and 0.25 in. static pressure at high speed based on tests conducted in an HVI-approved state-of-the-art test laboratory. Sones are a measure of humanly-perceived loudness, based on laboratory measurements.