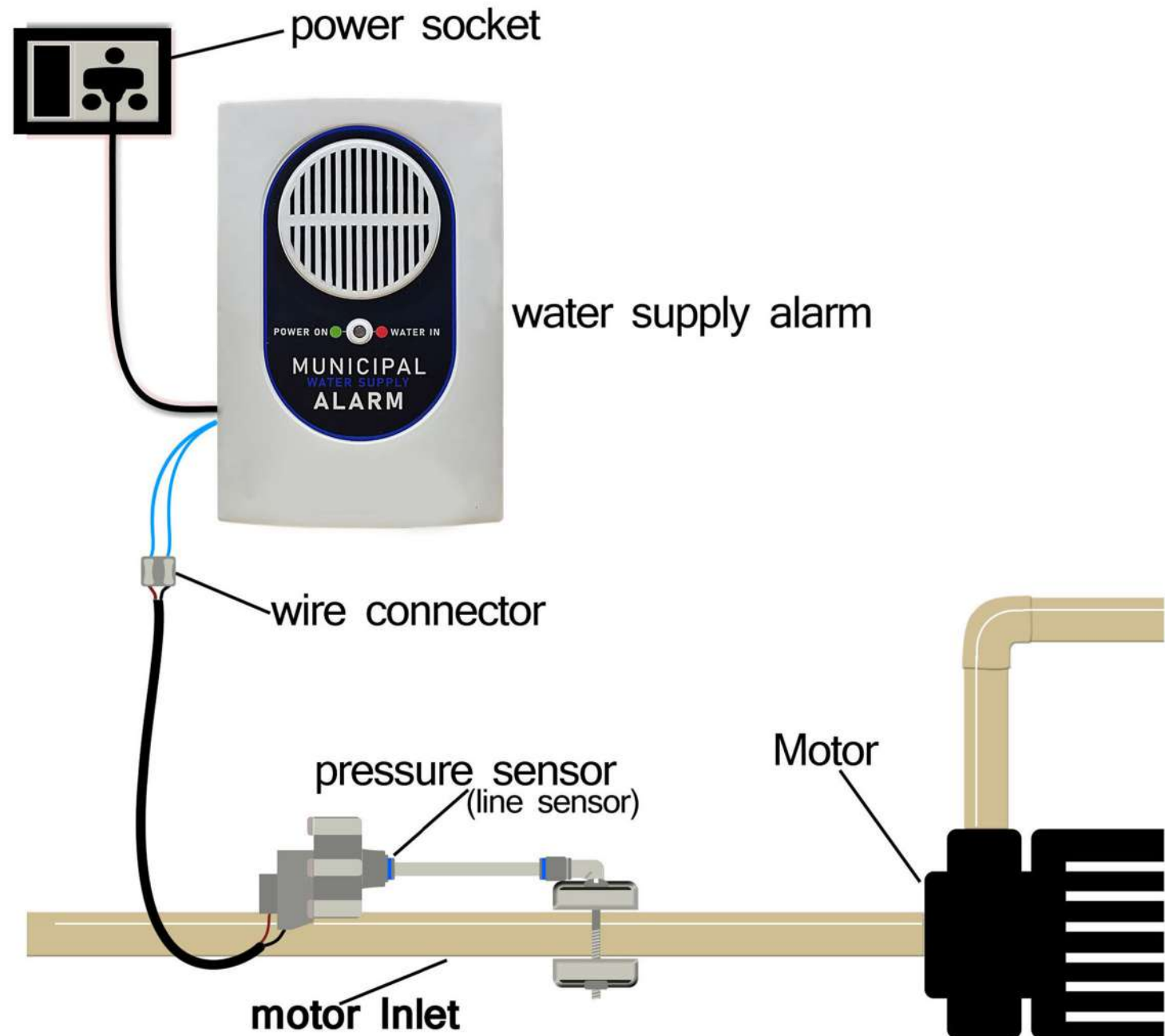


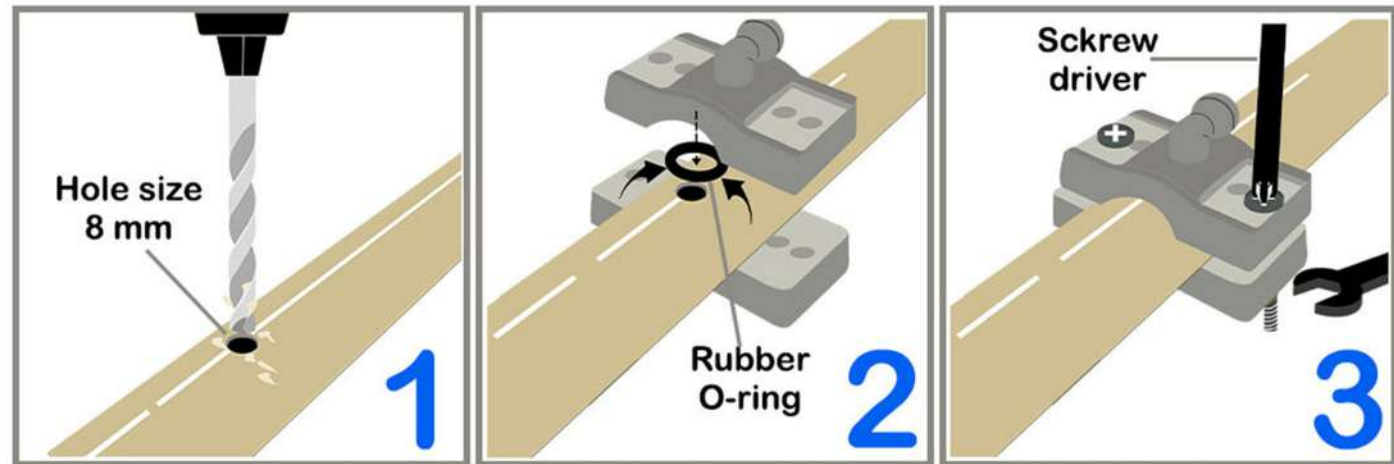
Installation

Now the device
is ready to
eliminate your
biggest daily
worries about
water waiting

Easy
installation



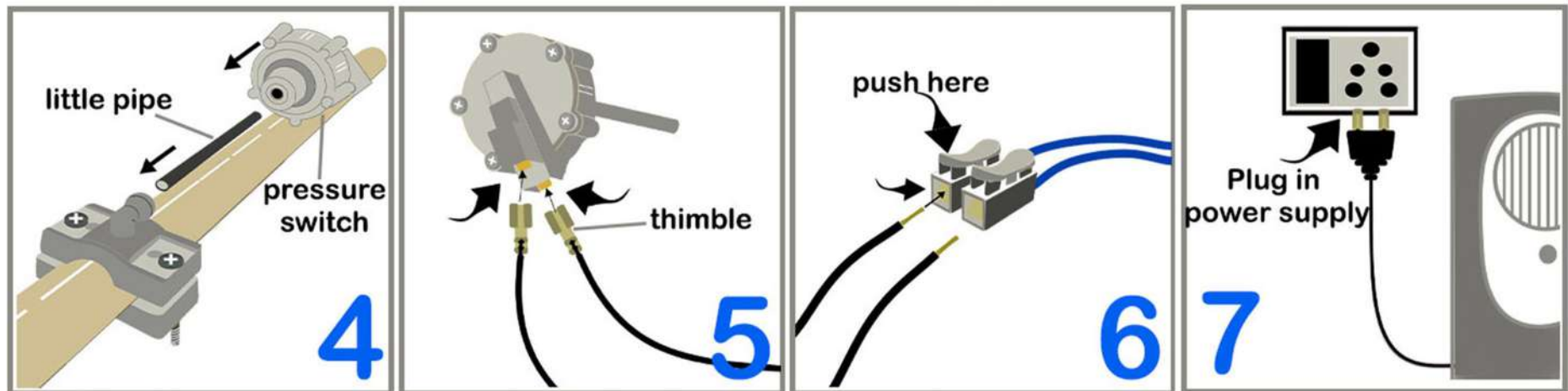
pressure sensor fitting



Make a hole in motor inlet

Add rubber O ring the center of hole

Tight the clamp on pipe



Attach the pressure switch with clamp the help of little pipe

Attach the wire after fitt thimble

push the connector add wire in conector port

Plug in power supply



यह अलार्म लगातार बोलकर
आपको परेशान नहीं करेगा।

This alarm will not bother
you by continuously
speaking.

पानी आने पर यह एक मिनट तक बोलेगा।
हालाँकी, LED लगातार लाल रहेगी। अगर
पानी आने पर आप इसकी आवाज़ नहीं सुन
पाए तो आप LED की जाँच करके देख
सकते हैं की पानी आ रहा है या नहीं।

It will speaking for one minute
when water is coming.
However, the LED will remain
red continuously. If you hear it
when it is flowing, you can
check the LED to indicate
water is coming.

speaker

आपके घर की लाइन में पानी
आ गया है कृपा मोटर को
ऑन कीजिए

Water has comes at your
house line, please turn on
the motor.

Dual color LED



Signal Green mean
power ON



Signal Red mean
supply arrived