

BARROW CLASSIFICATION STANDARDS FOR WAVE #1**BERKSHIRE****Ideal**

- Predominantly black possessing Berkshire breed character with regards to skull shape and ear shape.
- A Berkshire should have six white points: nose, each leg/foot and at end of tail (unless tail is docked).
- Erect ears.

Acceptable

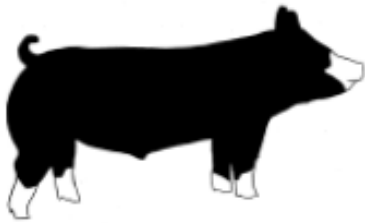
- An occasional splash of white skin/hair may appear on the body.
- Three of the four legs/feet must be white.
- Ear can have white on it (not full coverage).
- Red or fawn hair, if over black or white skin pigmentation.
- Ear deformity/ear folded in a backwards position towards hog's body (crinkled ear).

Discriminatory

- Gray pigmentation on the body (spotting or mottling pattern).
- Moderate amount of white skin splashes.

Absolute Disqualification

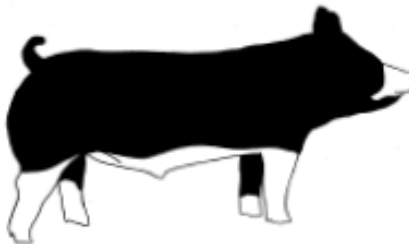
- Solid white or solid black face from base of ear forward.
- Solid black nose (white does not break rim of nose).
- Solid white ear.
- Excessive white on the body.
 - a. Full coverage of white coming up the lower one-third of the body (not including legs) that extends from the base of the jaw through sternum and lower body through seam of the ham.
 - b. White splash extends from rear leg to upper hip.
- White skin or hair that continuously encircles the body anywhere between the base of the ear and the base of the tail.
- Any evidence of belt formation on the body.
- Lacks breed character with regards to skull and/or ear shape.
- Any evidence of physical tampering that would alter breed character.

BERKSHIRE**Breed Classification Guidelines****Ideal:****Acceptable:**

Three of the four legs/feet
must be white.



An occasional splash of white skin/
hair may appear on the body.

Discriminatory:

Moderate
amount of
white skin
splashes.

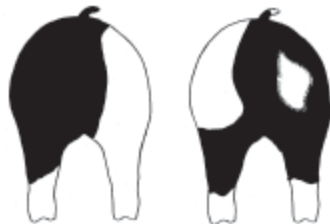
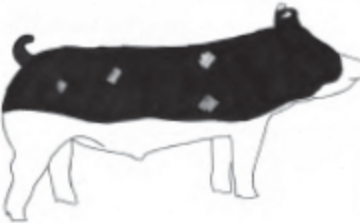


Absolute Disqualification:

Solid white or solid black face from the base of the ear forward.



White skin or hair that continuously encircles the body anywhere between the base of the ear and the base of the tail.



Excessive white on the body.

- a. Full coverage of white coming up the lower one-third of the body (not including legs) that extends from the base of the jaw through sternum and lower body through seam of the ham.
- b. White splash extends from rear leg to upper hip.



Solid white ear.



Solid black nose (white does not break the rim of the nose).



Lacking Berkshire breed character with regards to skull shape and ear shape.

SPOTTED**Ideal**

- Must be black and white, possessing Spotted breed character.
- Ears are down when hog is in a relaxed position.

Acceptable

- Predominantly black with white spots or predominantly white with black spots.
- Ear deformity/ear folded in a backwards position towards hog's body (crinkled ear).

Discriminatory

- Partially erect/level ears.
- Moderate brown spots.

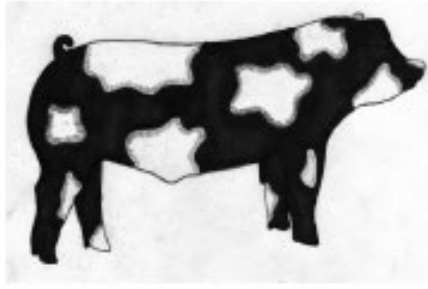
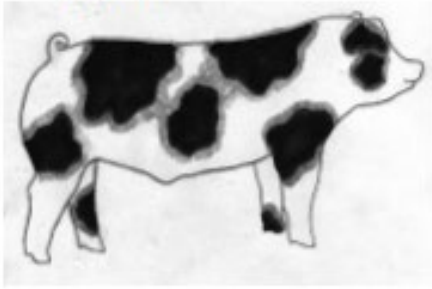
Absolute Disqualification

- Erect ears.
- Solid black head from base of ears forward.
- Distinct white belt pattern (hair or skin) encircling and extending down and onto each shoulder.
- Red hair.
- Excessive brown spots.
- Any evidence of physical tampering that would alter breed character

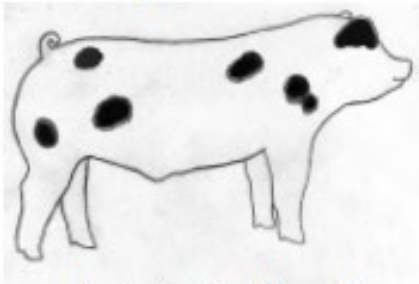
POLAND CHINA & SPOTTED**Ideal:****Discriminatory:****Absolute Disqualification:**

SPOTTED

Ideal:



Acceptable:

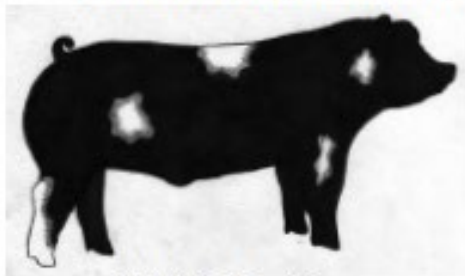


Predominantly white with
black spots.



Predominantly black with
white spots.

Absolute Disqualification:



Solid black head from
base of ears forward.



Distinct white belt pattern (hair
or skin) encircling and extending
down and onto each shoulder.

POLAND CHINA**Ideal**

- Predominantly black possessing Poland China breed character.
- A Poland China should have six white points: nose, each leg/foot and at the end of the tail (unless tail is docked).
- Ears are down when hog is in a relaxed position.

Acceptable

- A slight continuation of white from the legs to the body.
- Ear may have white on it.
- Three of the four legs must be white.
- May have an occasional splash of white on the body.
- Hair and skin texture can vary from coarse to thin, and color can vary from dark black to ashy/pale.
- Ear deformity/ear folded in a backwards position towards hog's body (crinkled ear).

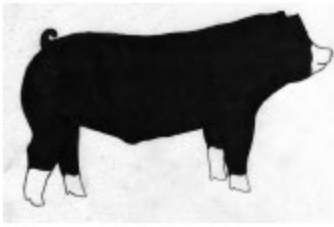
Discriminatory

- Partially erect/level ears.
- A moderate continuation of white from the legs to the body.
- Moderate freestanding white, not attached to a leg.

Absolute Disqualification

- Erect ears.
- Solid white or solid black face.
- More than one solid black leg.
- If the white on a solid white ear goes past the base of the ear.
- An excessive continuation of white from the legs, encompassing the upper hip or shoulder.
- Excessive freestanding white, not attached to a leg.
- Evidence of belt formation.
- Red or sandy hair.
- Any evidence of physical tampering that would alter breed character.

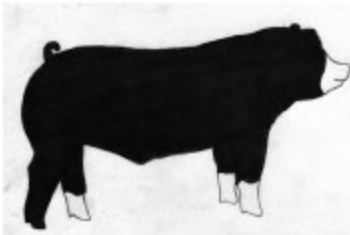
POLAND CHINA & SPOTTED**Ideal:****Discriminatory:****Absolute Disqualification:**

POLAND CHINA**Ideal:****Acceptable:**

A slight continuation of white from the legs to the body.



Ear may have white on it.



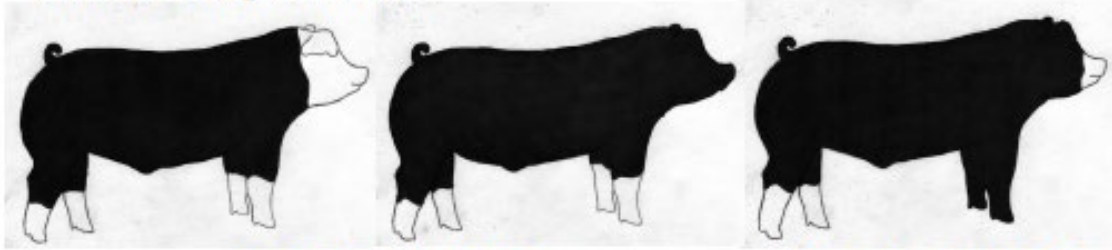
Three of the four legs must be white.



May have an occasional splash of white on the body.

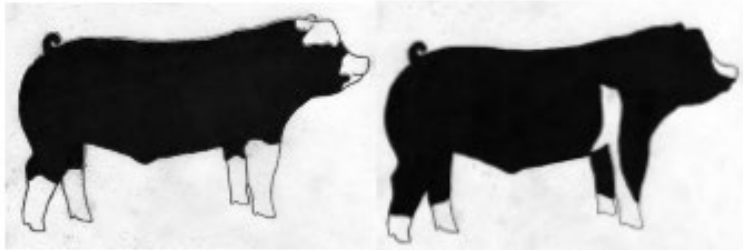
Discriminatory:

A moderate continuation of white from the legs to the body or moderate freestanding white, not attached to a leg.

Absolute Disqualification:

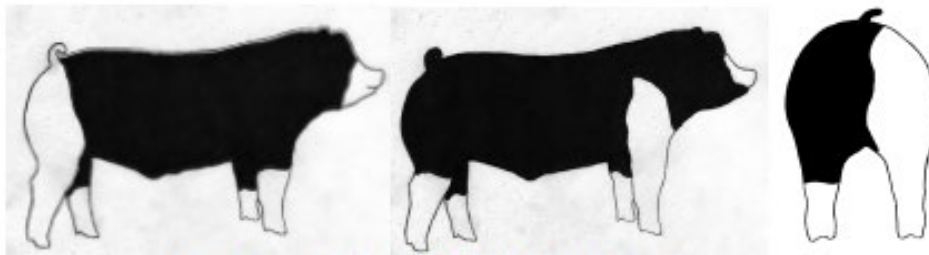
Solid white or solid black face.

More than one solid black leg.

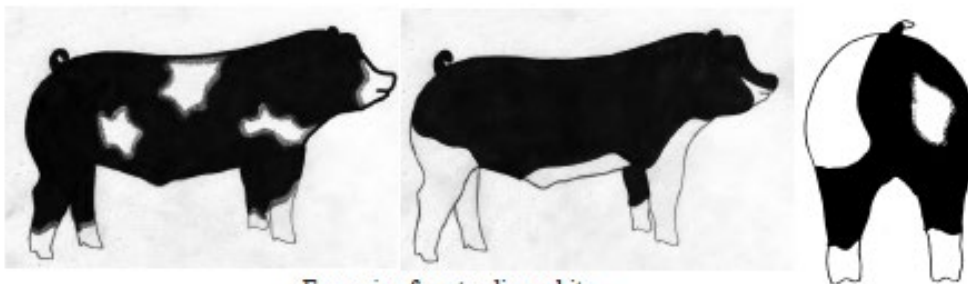


If the white on a solid white ear goes past the base of the ear.

Evidence of belt formation.



An excessive continuation of white from the legs, encompassing the upper hip or shoulder.



Excessive freestanding white, not attached to a leg.

HAMPSHIRE**Ideal**

- Black in color with a full white belt over the shoulders encompassing both front legs/feet.
- Possess Hampshire breed character with regards to skull shape and ear shape.
- Erect ears.

Acceptable

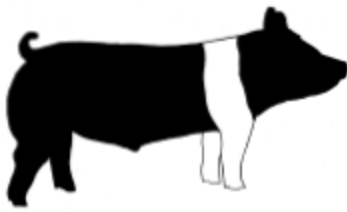
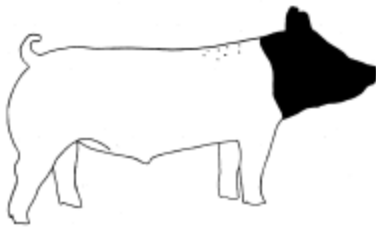
- Black head with a white body, with evidence of pigment and freckling down the top.
- White belt starting on a front foot/leg; belt partially encircles body extending to at least the chest floor (half belt).
- Freckling in the belt.
- Ear deformity/ear folded in a backwards position towards hog's body (crinkled ear).

Discriminatory

- Large spots within the belt.
- Belt is in front of or behind a solid black front leg.
- If belt v's and progresses towards the poll (base of the ear).
- White tip on tail, if docked.
- White on rear leg extends to the base of the ham.

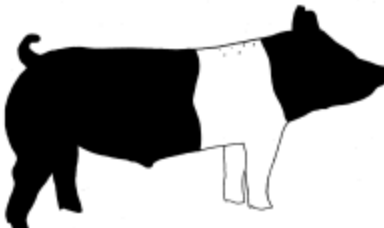
Absolute Disqualification

- Streaking or evidence of white on forehead.
- White skin extends over the rim of the nose.
- When mouth is closed, the white under the chin cannot exceed what a U.S. minted quarter will cover.
- Black head with a white body without freckles or pigmentation.
- Belt extends past the sheath (sheath must be black).
- Excessive frosting or white hair outside the belt.
- Red hair.
- Droopy or floppy ears.
- Any evidence of physical tampering that would alter breed character.

HAMPSHIRE**Ideal:****Acceptable:**

Black head with a white body, with evidence of pigment and freckling down the top.

White belt starting on a front foot/leg; belt partially encircles body extending to at least the chest floor (half belt).



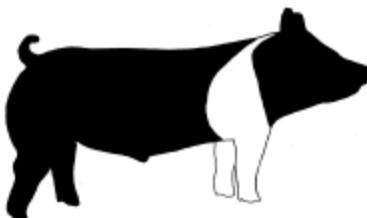
Freckling in the belt.

White on rear leg is below the base of the ham.

**Discriminatory:**

Large spots within the belt.

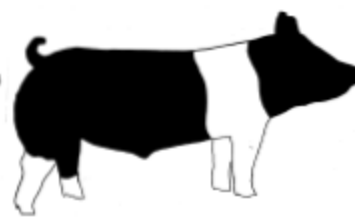
Belt is in front of or behind a solid black front leg.



If belt v's and progresses towards the poll (base of the ear).



White tip on tail, if docked.



White on rear leg extends to the base of the ham.

Absolute Disqualification:

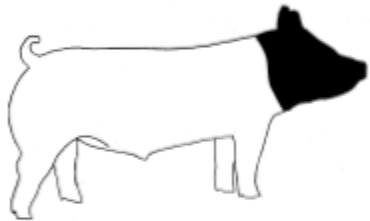
Streaking or evidence of white on forehead.



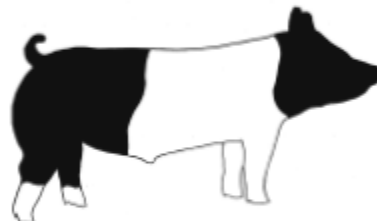
White skin extends over the rim of the nose.



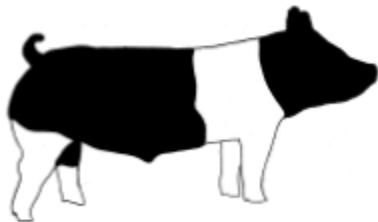
White under the chin cannot exceed what a U.S. minted quarter will cover.



Black head with a white body without freckles or pigmentation.



Belt extends past the sheath (sheath must be black).



White on rear leg extends above the base of the ham.



DUROC**Ideal**

- Must be red in color, possessing Duroc breed character.
- Ears are down when hog is in a relaxed position.

Acceptable

- Acceptable colors range from light red to dark brown.
- Ear deformity/ear folded in a backwards position towards hog's body (crinkled ear).

Discriminatory

- Minimal amounts of black hair.
- Black spots on the skin under two inches in diameter.
- Partially erect/level ears.

Absolute Disqualifications

- Excessive amounts of black hair.
- White hair.
- White skin on the body or legs, or that extends over the rim of the nose.
- Four (4) or more black spots on the skin, any of which are larger than two (2) inches in diameter.
- Evidence of a belt.
- Erect ears.
- Any evidence of physical tampering that would alter breed character.

DUROC**Ideal:****Discriminatory:****Absolute Disqualification:****DARK CROSSBRED**

- Barrows with black and/or red pigmentation (i.e. not sandy, rusty, orange, roan, gray or blue), comprising at least 20% of total body area, shall be considered a Dark Cross. These barrows may be black or red belted, black/red patched or spotted. Barrows with only blue, rusty, sandy, orange, and gray pigmentation are NOT considered Dark Crosses. Barrows that do not meet the breed classification requirements for Dark Crossbred will not be reclassified.

BARROW CLASSIFICATION STANDARDS FOR WAVE #2**CHESTER WHITE****Ideal**

- Solid white in color possessing Chester White breed character.
- Medium sized ears are down when hog is in a relaxed position.

Acceptable

- Ear deformity/ear folded in a backwards position towards hog's body (crinkled ear).

Discriminatory

- Partially erect/level ear.
- Skin pigmentation.

Absolute Disqualification

- Erect ears.
- Colored hair.
- Color on the skin, cumulatively larger than a U.S. minted silver dollar.
- Any evidence of physical tampering that would alter breed character.

CHESTER WHITE**Ideal:****Discriminatory:****Absolute Disqualification:**

LANDRACE**Ideal**

- Must be solid white possessing Landrace breed character.
- Large ears that droop and slant forward coming to a sharp point.

Acceptable

- Ear deformity/ear folded in a backwards position towards hog's body (crinkled ear).

Discriminatory

- Short rounded ears.
- Short snout mimicking that of a Chester White.

Absolute Disqualification

- Erect ears.
- Any hair color other than white.
- More than 3 spots of skin pigmentation; each individual spot cannot be larger than a U.S. minted quarter.
- Any evidence of physical tampering that would alter breed character.

LANDRACE**Ideal:****Discriminatory:****Absolute Disqualification:**