

NOW AVAILABLE FOR LEASE

**5,825 SF COMMERCIAL KITCHEN
WITH LOADING DOCKS**



2501-3 E PRESIDENT ST, SAVANNAH GA 31404



ZONING: IL

THIS 5,825 SF KITCHEN WITH A LOADING DOCK IS AN IDEAL SETUP FOR BUSINESSES FOCUSED ON CATERING, READY-TO-EAT MEAL PRODUCTION, AND LAST-MILE DELIVERY TO NEARBY DOWNTOWN SAVANNAH.

KEY FEATURES:

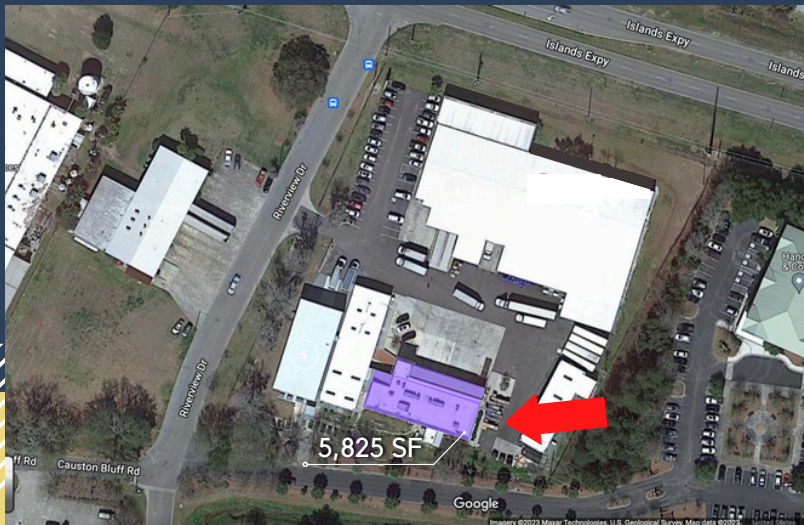
- 5,825 SF COMMERCIAL KITCHEN WITH LOADING DOCK ACCESS
- TWO WALK-IN COOLERS
- WALK-IN FREEZER
- SIX LOADING DOCKS FOR EFFICIENT DISTRIBUTION
- MODERN COMMERCIAL KITCHEN WITH STATE-OF-THE-ART EQUIPMENT
- CLIMATE-CONTROLLED HVAC FOR OPTIMAL FOOD STORAGE & COMFORT
- ELECTRICITY: 277/480V FOR HEAVY-DUTY EQUIPMENT
- SMOKE DETECTORS FOR ADDED SAFETY
- BUILT IN 2018 - EXCELLENT CONDITION

THIS FULLY-EQUIPPED KITCHEN SPACE IS AVAILABLE FOR LEASE.

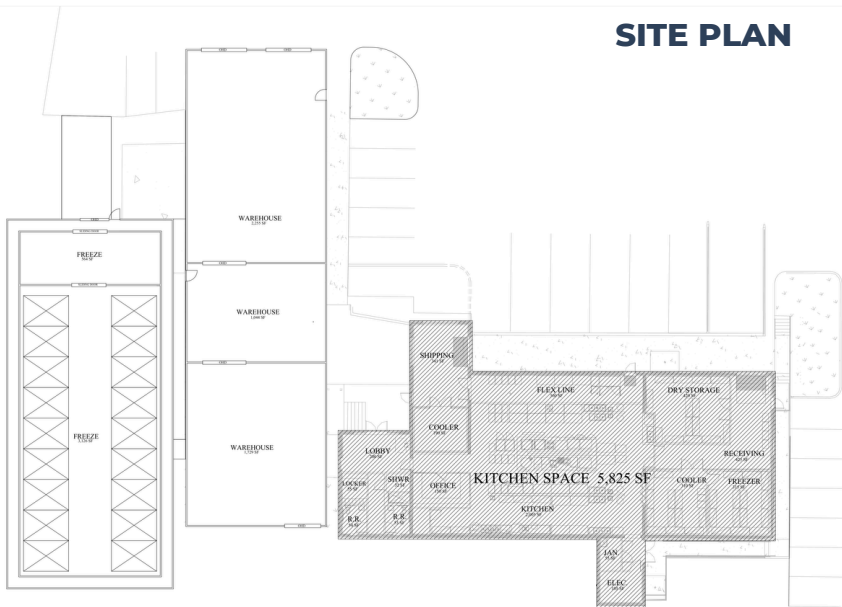
CONTACT US TODAY FOR MORE LEASING DETAILS!



AERIAL



SITE PLAN

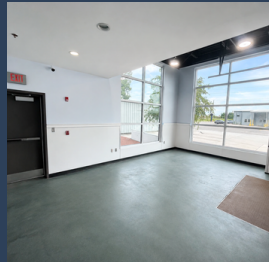


SITE PLAN

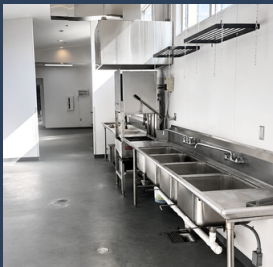




KITCHEN WITH A LOADING DOCK



KITCHEN WITH A LOADING DOCK



CONTACT US FOR MORE DETAILS!



2501 E PRESIDENT ST.
SAVANNAH GA 31404



OLEGM@USATRT.COM



917-656-1682

