



with **BRICK**  
by ADDCO

# VEHICLE MOUNT MESSAGE SIGNS



**Multiple Mounting Frames**  
to fit any vehicle and application

## DISPLAY FEATURES

### SUPER SURROUND BACK PANEL

- Flat black powder coat finish
- Lightweight, ASSHTO wind load compliant
- No bulky cabinet
- No fans, filters, hinges or doors to deal with
- Slim profile, only 2.5 inches
- One piece aluminum structure

### BRICK® LED MODULE

- Self-contained, environmentally sealed LED unit
- High Density, 8x12 pixel array each
- Plug & Play simplicity
- Virtually maintenance free
- Consistent intensity and color LED BIN selection

### LEGIBILITY

- Full Matrix
- Variable width/height fonts
- 30 degree cone of vision
- 0-100% Manual and Automatic LED intensity adjustment in response to ambient light conditions
- Front and rear facing ambient light sensor
- Up to 1,200 ft visibility



## CONSTRUCTION

- Quality materials and dedicated craftsmanship
- Superior durability
- 2" x 2" 11-gauge, welded tubular steel frame
- Chromate etched, non-reflective flat black powder-coated Super Surround Back Plate
- 1/8" 5052 aluminum sheet metal back plate
- Weatherproof main bus with positive lock connectors
- Tested up to 65 mph moving vehicle
- ADDCO ISO 9001:2015 Quality Management System
- Multiple mounting frames to fit any vehicle and application

## OPTIONS:

- Manual or Power Actuator Tilt Display
- Solar Power
- 20', 30', 40', 50' Cable Lengths

## ADDCO's SC8 CONTROLLER

- Wireless Control from any smart device
- Password Protected
- Create, edit, display messages
- Store hundreds of messages
- Create messages on the fly
- Includes Arrow Board operation
- Displays battery voltage and temperature
- Auto deploy and stow with message



WWW.ADDCO.COM

651.488.8600

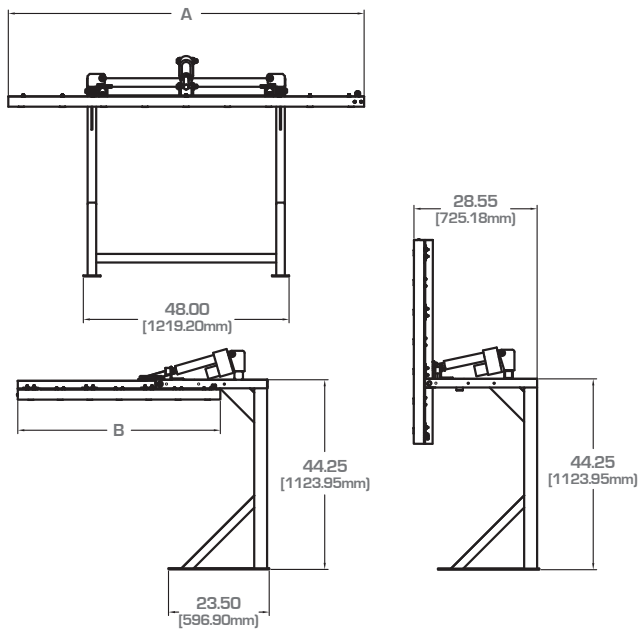
955 Wells Street Suite 400 . St. Paul, MN 55106

# DISPLAY CONFIGURATIONS

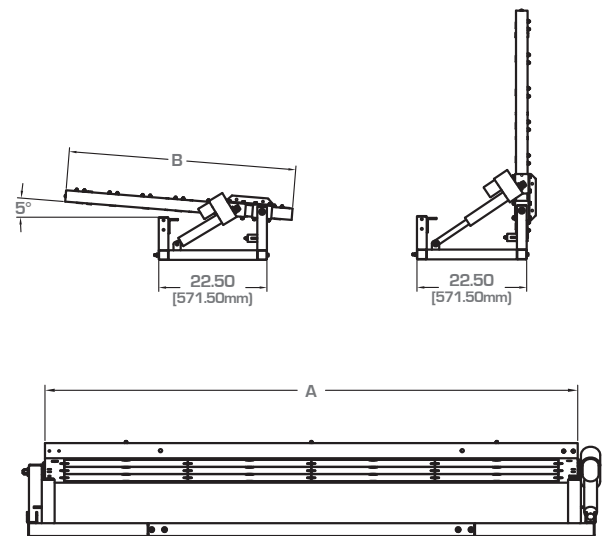
| MODEL | DISPLAY                  | DIMENSIONS [A x B] | FONTS                               | TYPICAL CHARACTERS/LINES |
|-------|--------------------------|--------------------|-------------------------------------|--------------------------|
| 3x2H  | Full Matrix 36x16 Pixels | 63.75"W x 33.5"H   | 4x7 Pixel Font for 12" Characters   | 2 Lines of 7 Characters  |
| 4x2H  | Full Matrix 48x16 Pixels | 83"W x 33.5"H      | 5x7 Pixel Font for 12" Characters   | 2 Lines of 8 Characters  |
| 5x2V  | Full Matrix 40x24 Pixels | 74.75"W x 44.5"H   | 4x7 Pixel Font for 11.2" Characters | 3 Lines of 8 Characters  |
| 4x3H  | Full Matrix 48x24 Pixels | 83"W x 47.25"H     | 5x7 Pixel Font for 12" Characters   | 3 Lines of 8 Characters  |



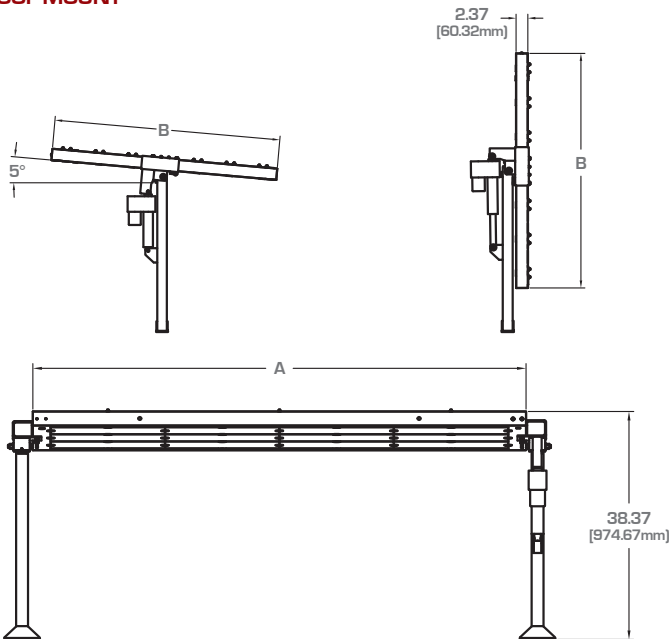
## BED MOUNT



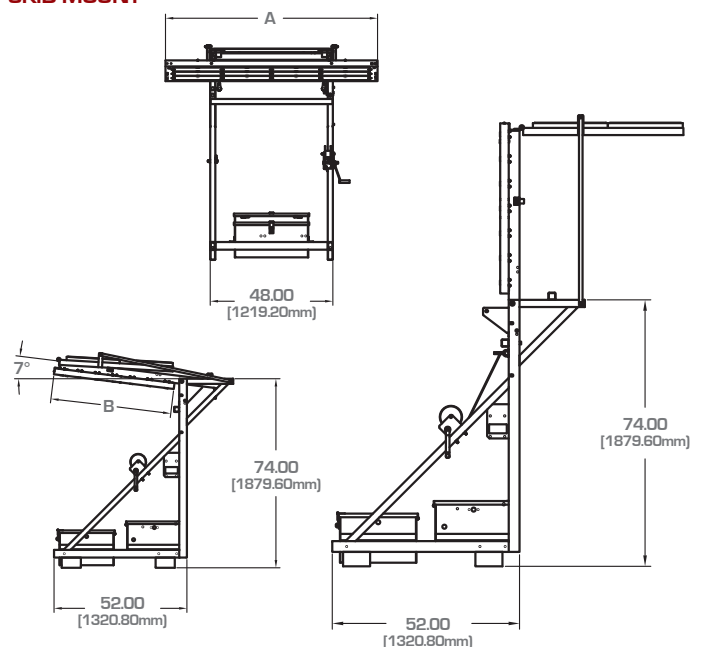
## RAIL MOUNT



## ROOF MOUNT



## SKID MOUNT



\* specifications are subject to change without notice

WARRANTY: • 2 Years on BRICK Modules • 1 Year on Parts and Workmanship