

NCAA EMERGING SPORTS FOR WOMEN



Supported by the Women's Collegiate Wrestling Coalition || Contact Julia Salata || julia@wrestlelikeagirl.org || [@WCWCoalition](https://www.wcwc.org)

A SPORT FOR EVERYBODY

Wrestling offers a new and diverse sporting opportunity to female student-athletes. Adding women's wrestling as a varsity athletic offering to your institution will give you an affordable, inclusive, and exciting sport for student-athletes.

NCAA women's wrestling is on the cusp of the critical 40 program minimum requirement needed to be considered for NCAA Championship status. Across all collegiate athletic associations (NCAA, NAIA, NJCAA), there are 80+ collegiate varsity programs, with more opportunities being created as women's wrestling gains popularity.

EQUIPMENT & FACILITY DETAILS

\$35,000
+ Coach Salaries

Yearly Operating Budget*

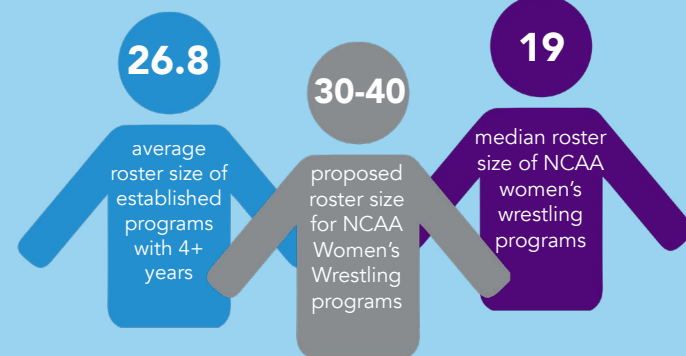
Start-up Equipment

- Wrestling Mat
- Competition Singlets
- Shoes
- Headgear
- Other**

Modest Facility Needs

- Wrestling Room***
- Women's Locker Room

ROSTER SIZE



29

states recognize women's wrestling as an official high school sport

39

number of NCAA women's wrestling programs in 2019-20 academic year

330

total participants at the 2019 Women's Collegiate Wrestling Association National Championships (WCWA)

USA WRESTLING WOMEN'S MEMBERSHIP

Native American	4%
African American	4%
Mixed	4.7%
Asian	4.7%
Pacific Islander	4.8%
Hispanic	23.7%
White	54.5%

SCHOLASTIC AND COLLEGIATE GROWTH

Student-Athlete Participation

1999 - 2,361 || 2019 - 30,000+
• 27.5% growth in one year •

20+ YEARS of growth in girls and women's wrestling for USA Wrestling

14% AVG. annual growth rate for girls participating in wrestling over the past 4 years

WCWA Participation

2011 - 143 || 2019 - 330

1999 first 4-year varsity program established, now 80+ programs across all associations

2020 women's wrestling approved as emerging sport

2020 National Collegiate Women's Wrestling Championship, exclusive for NCAA programs

Useful strategy to support Title IX compliance and meet the demand for opportunities with proportional participation

DEVELOPING LEADERS

Equal Opportunity. Equal Access. Low Barriers to Entry. 23% of wrestlers are 1st gen. college students. Paired with academic access it's shown to increase social, financial, & economic mobility among its participants****.



*The final cost will reflect each programs individual needs and requirements.

**These items will be deemed necessary by each adopting institution.

***These can be utilized along side an existing men's wrestling program.

**** [Link to full article.](#)