

Research

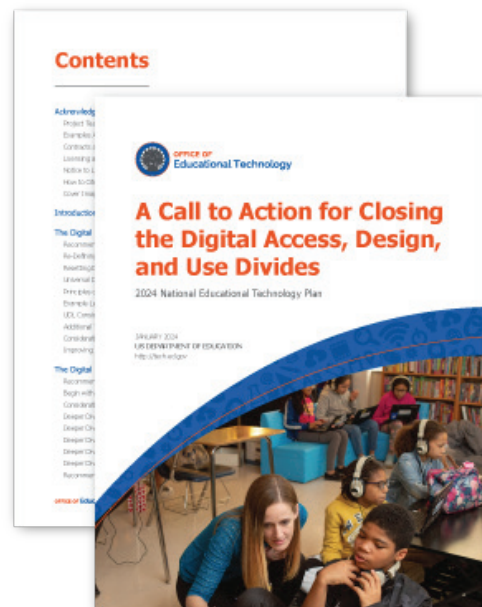
Explore the IMPACT of zSpace on learning in STEM and CTE through research studies, reports, and use cases. Over the past ten (10) years, studies have indicated that learning with zSpace:

- Increases engagement
- Motivates students
- Promotes understanding
- Achieves outcomes
- Creates opportunities for critical thinking, communication, creativity, and collaboration
- Trains for careers and workforce

*Significant improvement including a **16% increase** in post-test scores as a result of using zSpace.*

Rebecca Hite, Ph.D

Texas Tech University, 2022



M.A. Jones Elementary School (Atlanta Public Schools) highlighted for 3D modeling with zSpace in USDOE National Education Technology Plan (2024).

Services

We offer comprehensive support services including training, implementation, and ongoing assistance to ensure educators effectively integrate zSpace technology into their curriculum. Our team is dedicated to helping schools maximize the potential of immersive learning.

For more details on research and services, visit zspace.com



Scan to contact sales or visit: <https://zspace.com/contact-sales>

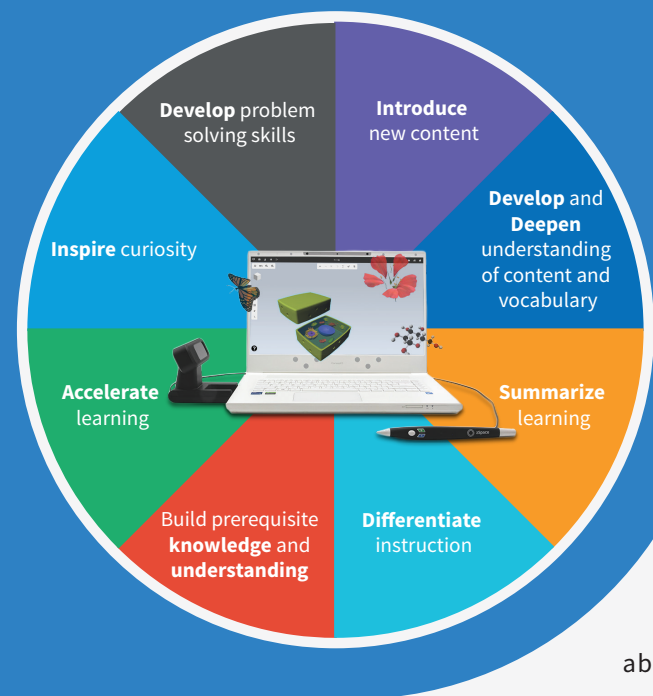
The zSpace Solution

The zSpace Inspire is a comprehensive solution consisting of Windows-based AR/VR laptops, software, standards-aligned content, and professional development.



Scan for more info about a free demo or visit: <https://info.zspace.com/what-is-zspace>





Career Readiness powered by zSpace

Career Awareness

Open up the world of career possibilities for students. The immersive zSpace learning experience introduces students to a variety of careers, sparking early interest and curiosity.

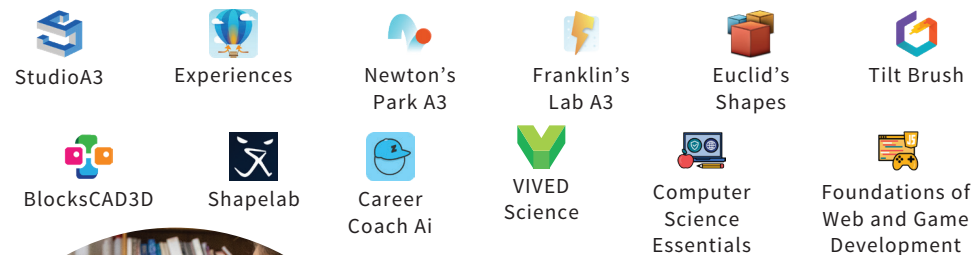
Career Exploration

School is a critical time for students to develop their interests in specific fields of study and actively begin shaping their futures. With zSpace, students can explore various career paths at a deeper level empowering them to make informed decisions about their future coursework and programs of study.

zSpace for STEM

Elementary and Middle School

zSpace solutions for Elementary and Middle school engages young minds in learning through interactive hands-on experiences and simulations in STEM and computer science. From exploring the solar system to dissecting virtual organisms, zSpace brings lessons to life, igniting curiosity and sparking a passion for learning.



High School

The zSpace High School Solution prepares high school students for college and careers leveraging AR/VR to provide simulations and interaction with concepts in STEM and computer science.



Career Preparedness

Equip students with the tools needed for success at the high school and post-secondary levels. zSpace offers an unparalleled opportunity to deepen expertise in specific academic areas and programs of study. Completing certification programs and programs of study ensures that students are well-prepared for the demands of the workforce.



Career & Technical Education

Advanced Manufacturing & Robotics

Ignite creativity and innovation in CTE learners with hands-on experiences in advanced manufacturing and robotics, preparing them for high-demand industries.

Agriculture & Food

Immerse CTE learners in virtual farm environments, cultivating a deep understanding of agricultural processes and fostering sustainable practices.

Health Sciences

Elevate medical training with lifelike simulations, empowering CTE learners to develop critical skills and enhance patient care.

Information Technology

Equip CTE learners with practical skills through interactive IT experiences, preparing them for the dynamic digital landscape.

Skilled Trades

Empower CTE learners to master trades through realistic simulations, allowing them to gain hands-on experience and excel in their chosen field.

Transportation

Immerse CTE learners in virtual transportation scenarios, honing essential skills and promoting safety in real-world situations.

Technical Specifications

Operating System

Windows 11 Pro 64-bit

CPU and Chipset

Intel Core™ i5-11400H processor

Inspire Pro

Intel Core™ i7-11800H processor

Memory

Dual-channel 16-GB DDR4 SDRAM

Inspire Pro

Dual-channel 32-GB DDR4 SDRAM

Display

15.6" HD Display with IPS technology
Ultra HD 3840 x 2160 in 2D mode,
Acer ColorBlast technology, Pantone®
validated, Delta E<2, 100% Adobe RGB
color gamut, SpatialLabs 3D Stereoscopic
module, 1920 x 2160 in 3D mode

Dimensions

Height: .4 inch -1 inch (9.9mm-28.4mm)
Width: 14.1 inches (358.5mm)
Depth: 10.4 inches (263.4mm)

Graphics

NVIDIA® GeForce RTX™ 3060 with a 6-GB
GDDR6 VRAM

Inspire Pro

NVIDIA® GeForce RTX™ 3080 with a 8-GB
GDDR6 VRAM

Storage

512 GB SSD, PCIe Gen4, 16 GB/s, NVMe

Inspire Pro

1 TB SSD, PCIe Gen4, 16 GB/s, NVMe

Webcam

1280 x 720 resolution
720p HD audio/video recording

Eye-Tracking Camera

1280 x 480 resolution (VGA x 2) with
SpatialLabs technology

Wireless and Networking

Intel® Wireless Wi-Fi 6 AX201
802.11a/b/g/n/ac/ax wireless LAN
Supports Bluetooth® 5.1
Gigabit Ethernet, Wake-on-LAN ready

Input and Output

USB Type-C port: USB 3.2 Gen 2
Thunderbolt 4
DisplayPort 1.4
HDMI port with HDCP support
SDCard reader
Ethernet (RJ-45) port