



INCLINO-ROBOT

-----OUGAN GROUP

Professional instrument provider for geotechnical
engineering industry

www.ougangroup.com www.inclinorobot.com



Founded in **2005**

Headquarter: **Hangzhou**

Employee: over 130

Our business :

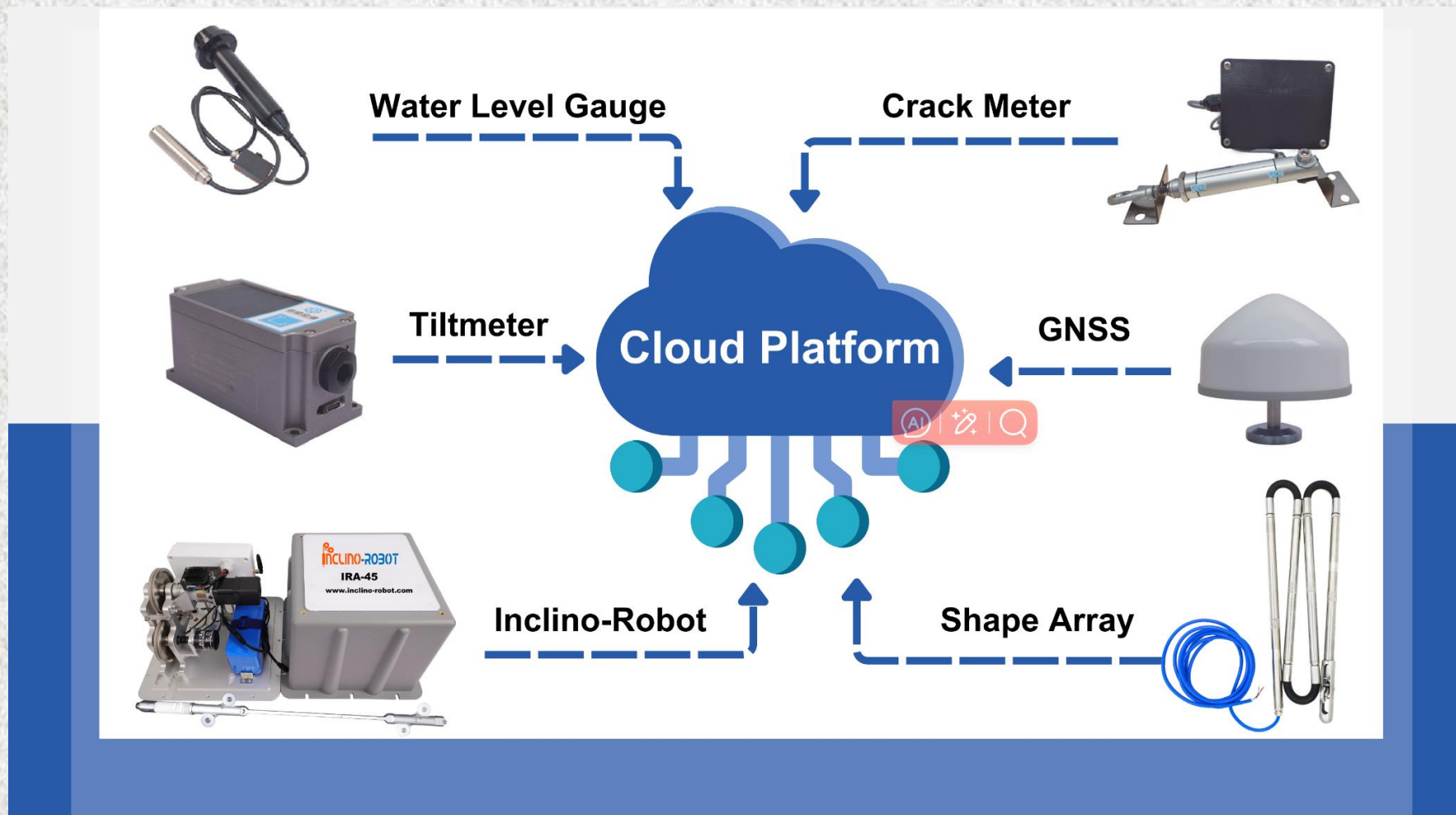
Line 1: Drillings & accessories

Line 2: Bi-directional static load testing

Line 3: **Geotechnical monitoring**



Dedicated in Geotechnical Monitoring



Why Inclino-Robot?

Common Inclinometers



Manual
Inclinometer



Shape Accel Arrays
(Flexible Inclinometer)



In-Place
Inclinometer

Current Pain-Points of Common Inclinometers

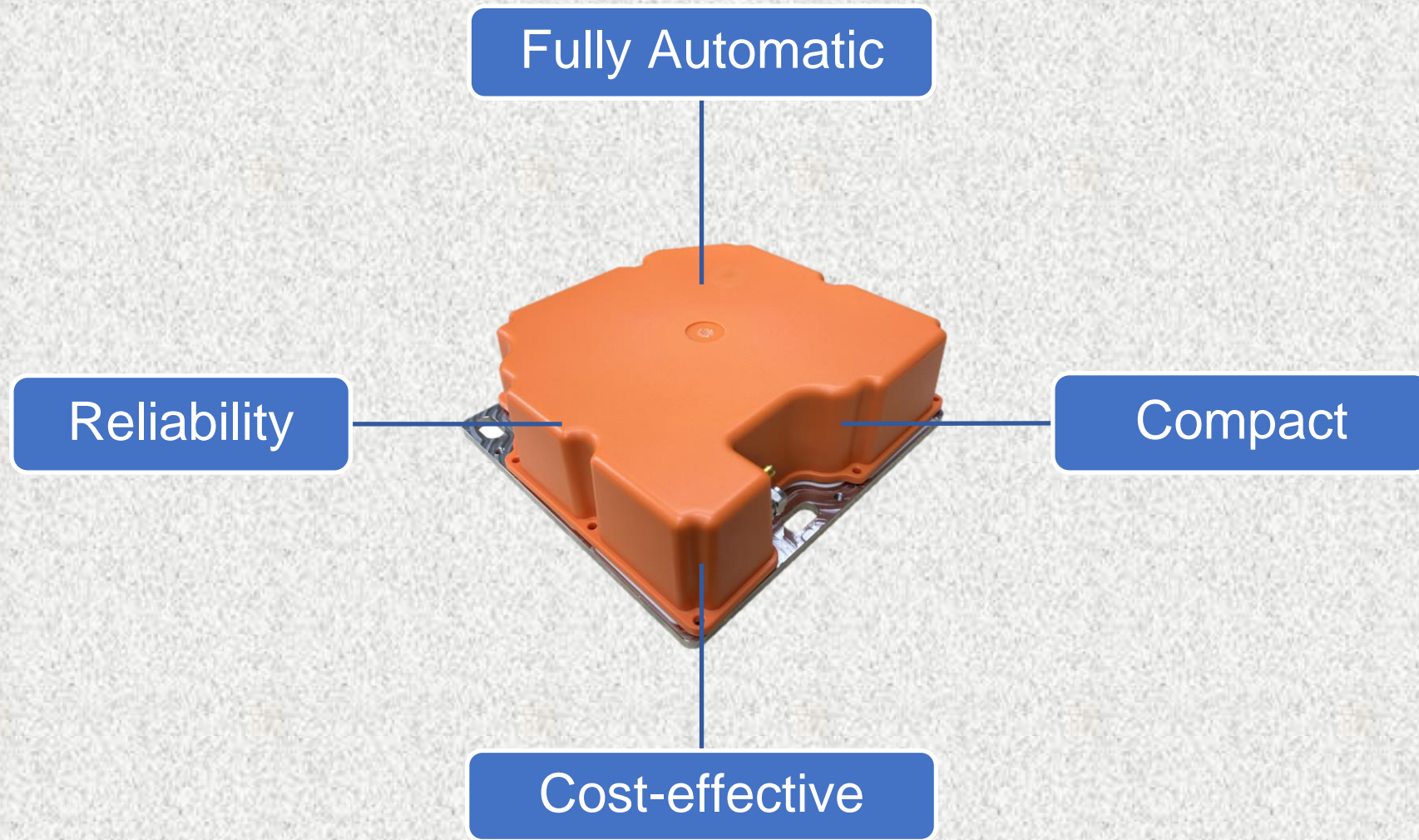
Manual Type

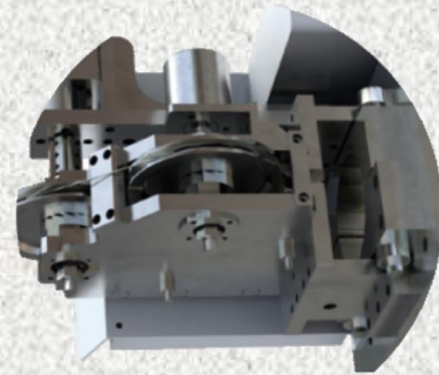
1. Low efficiency
2. High labor costs
3. Difficulty in operation in bad weather

SAA & IPI

1. Higher the cost
2. Complex installation
3. Difficult to recover
4. Difficult to reuse

Revolutionary Solution





Drive Controller



Inclinometer Sensor



Drive Wheel

Sensor

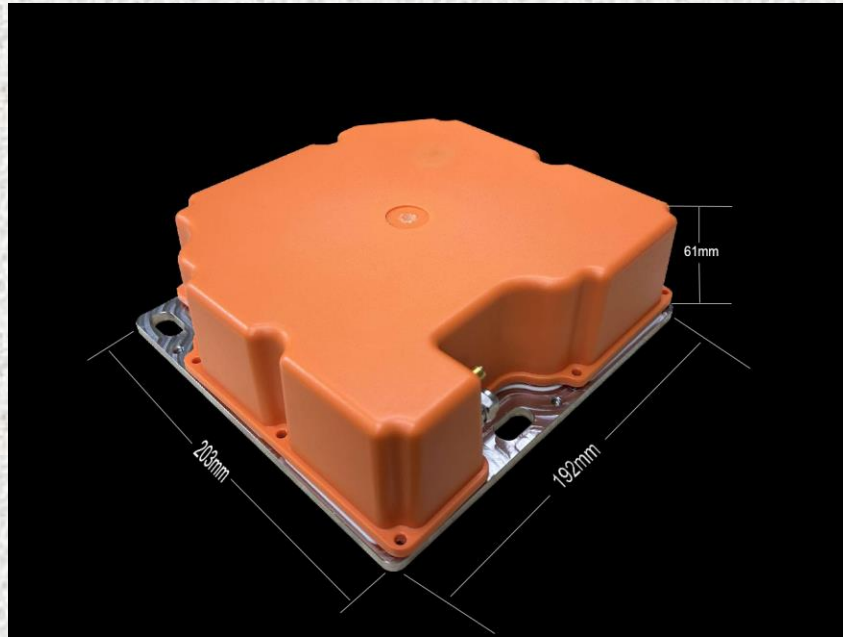
Wire Rope

Counterweights

Ougan Inclino-robot is an innovative inclinometer



Compact size, easy for operation;

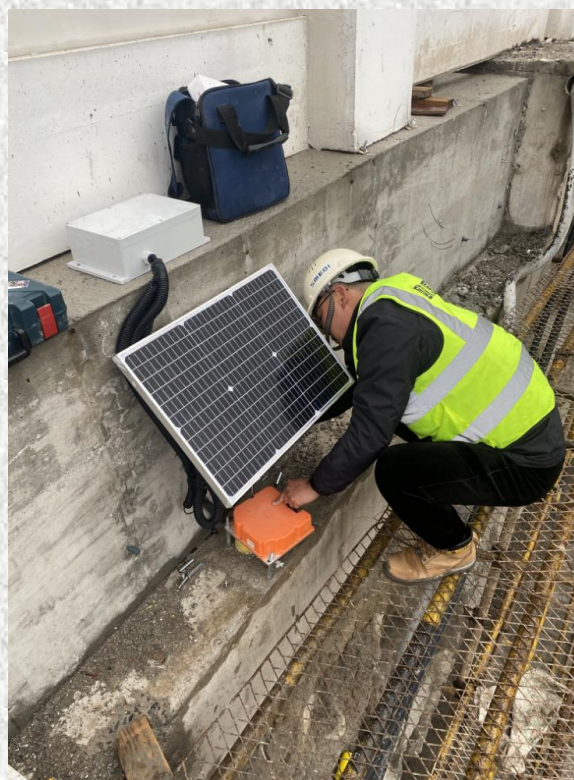


INCLINO-ROBOT-IRA

Total weight: 9kg



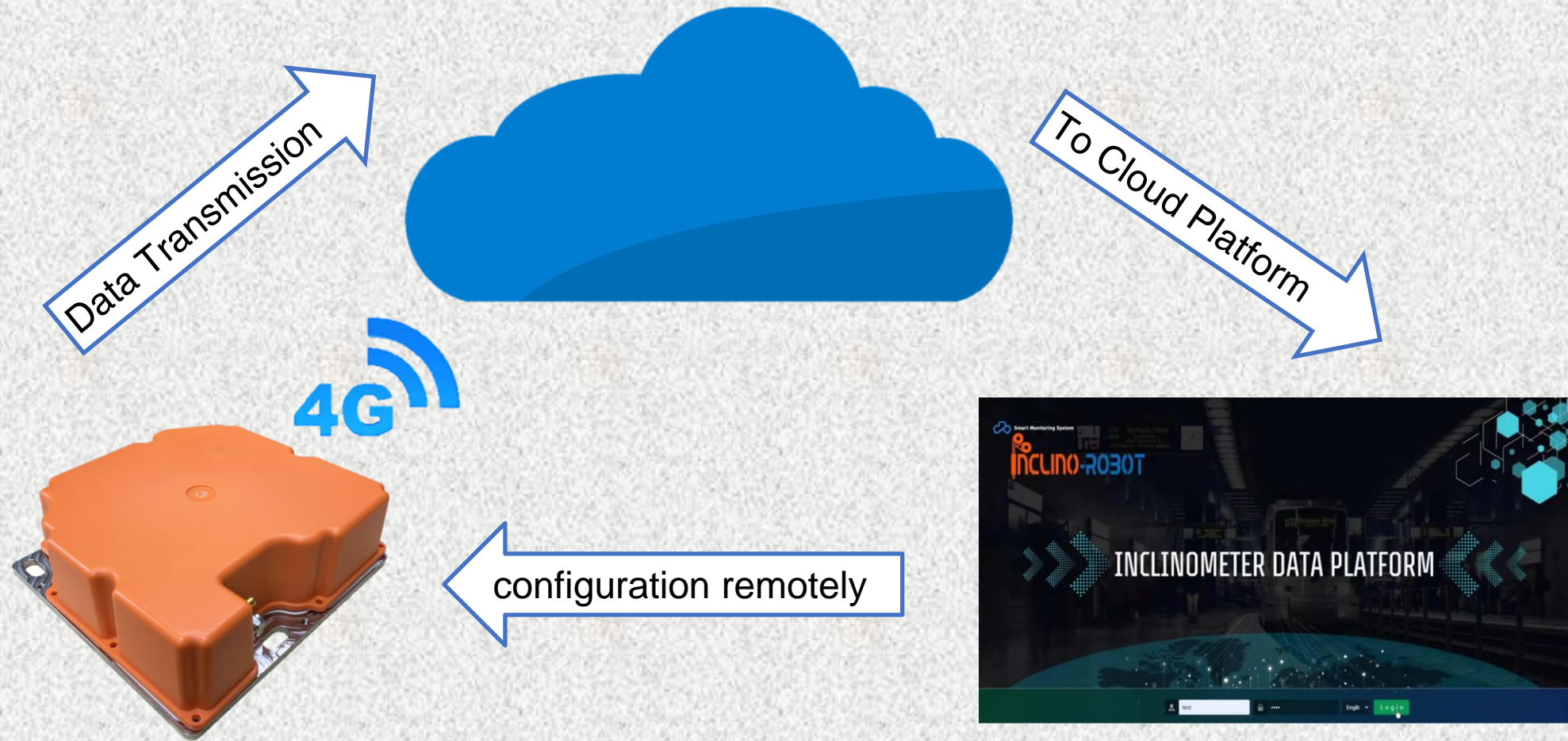
Cost-effective solution:
Low costs of purchase, operation, calibration & maintenance



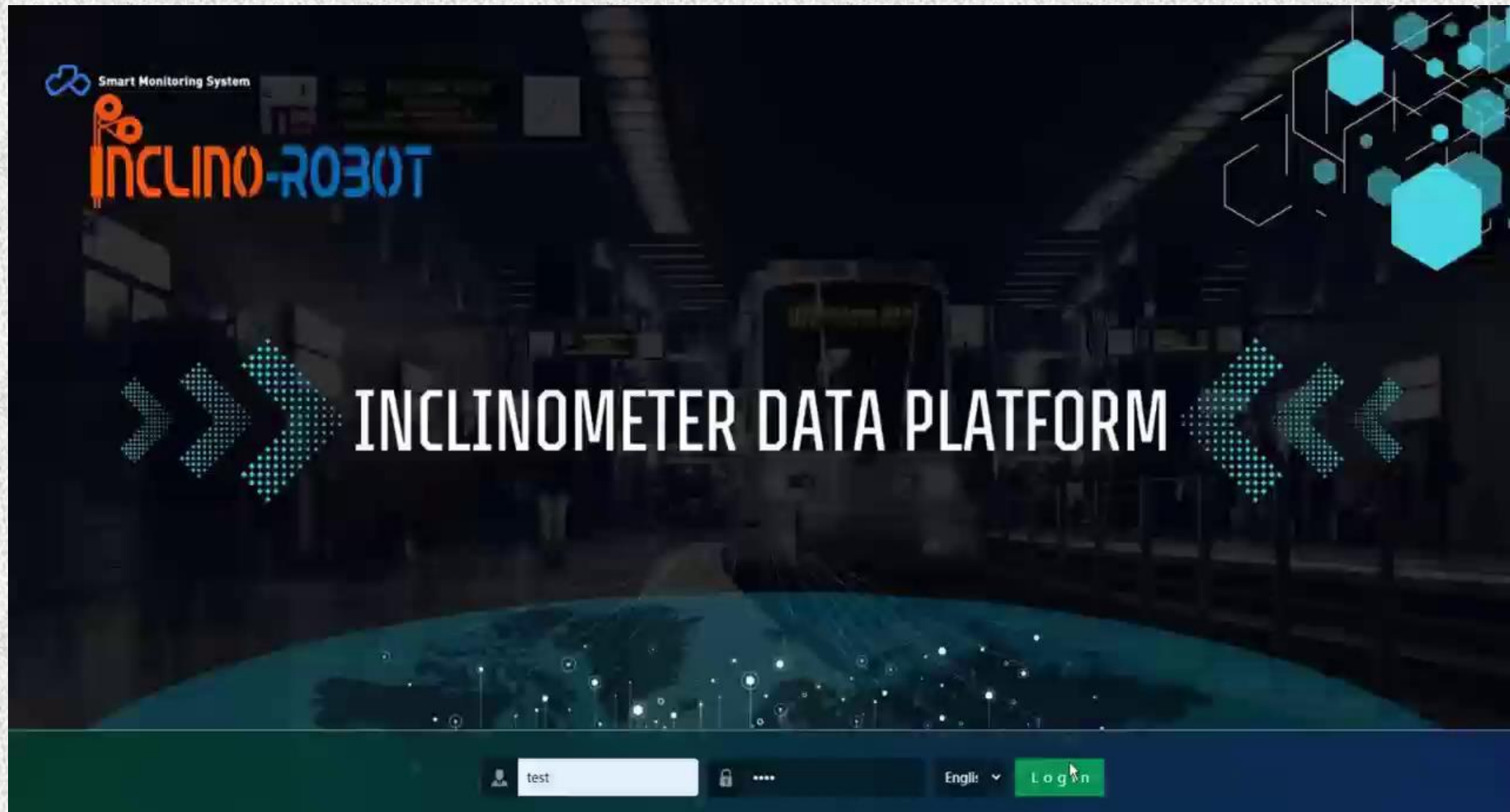
Ougan Inclino-robot is an innovative inclinometer



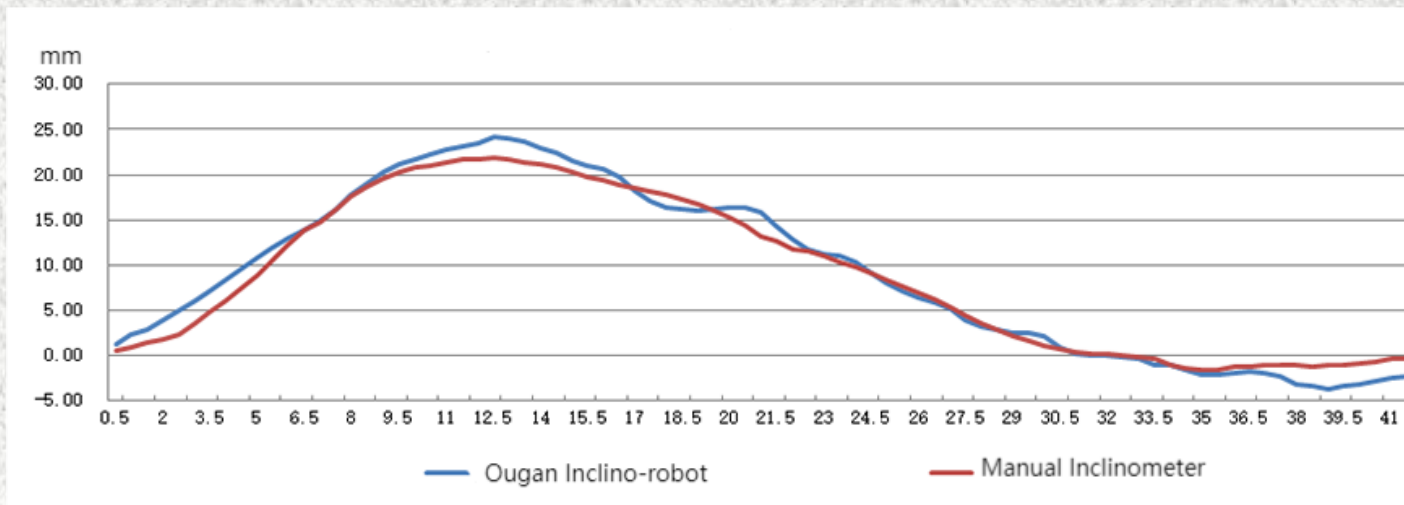
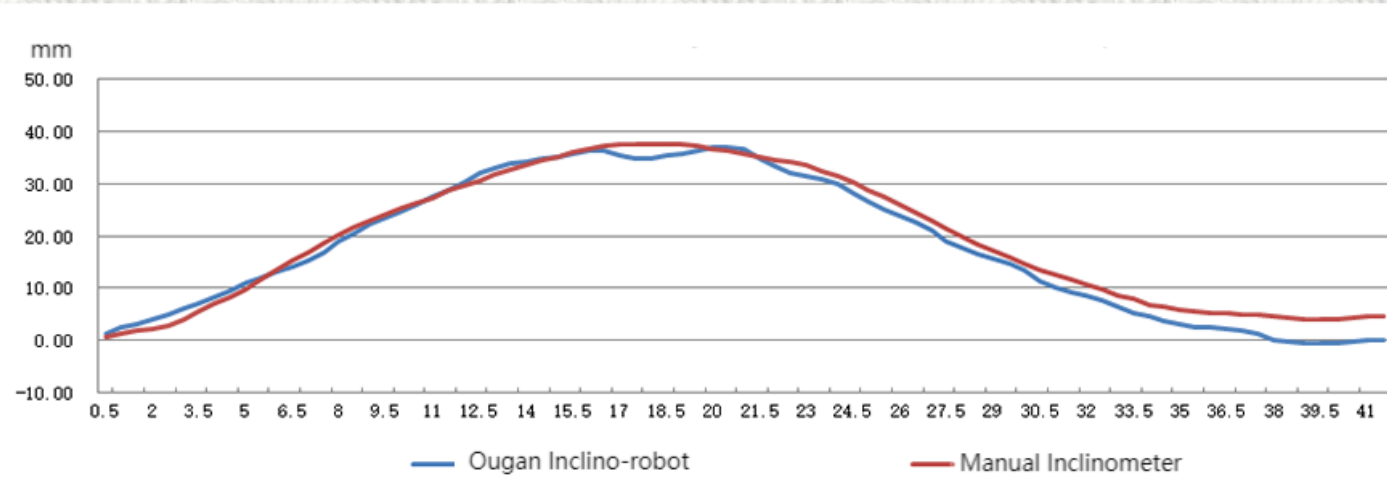
Ougan Inclino-robot is an innovative inclinometer



Ougan Inclino-robot is an innovative inclinometer



Impressive accuracy & reliable measurements that you can trust



- ✓ System accuracy:
0.25mm/m
2.5mm/30m
- ✓ Resolution:
0.01mm/500mm
- ✓ Measurement spacing:
500mm
- ✓ Measurement depth:
0 to 100m

Case Study



Thanks for your time!

Corporate Office:

Add: 17th floor, Unit A, Wanda Plaza, Hangxing Rd,
Gongshu district, Hangzhou, 310015, P.R.China
Tel: +86-571-28223950 / 28027060 / 28223955;
Fax: +86-571-28993137
Email: info@ougangroup.com

Dealer in HK :

YSF Corporation Ltd
Unit 610, CCT Telecom Building, 11 Wo
Shing Street, Fo Tan, New Territories, HK
Tel: 81098368
Email: sales@ysftool.com