

Chattanooga's Premier
Rental Resource!

1220 Latta Street
P.O. Box 5576
Chattanooga, TN 37406



423-624-2040
423-629-4826 (Fax)

Monday - Friday, 8am - 5pm
Saturday, 8am - 12pm

★ ★ ★ See even more at www.ShowtimeChattanooga.com ★ ★ ★

TABLES & CHAIRS

6 Ft. Round Folding Table	\$12.00
5 Ft. Round Folding Table	\$9.00
4 Ft. Round Table	\$7.00
3 Ft. Round Table	\$6.00
30" Round Pedestal Table	\$8.00
26" Round Pedestal Table	\$8.00
8 Ft. Rectangular Table	\$9.00
6 Ft. Rectangular Table	\$8.00
36" x 36" Card Table	\$6.00

Heart-shaped Table	\$10.00
Heart-shaped Table w/Cover (White, Black, or White Lace)	\$25.00
5 Ft. Serpentine Table	\$10.00
4 Ft. Serpentine Table	\$10.00
4 PVC Leg Extensions	\$1.00

CHAIRS

Gold Chivari Ballroom Chairs w/ White Cushion	\$7.00
White Resin Folding Chair	\$3.00
White Folding Chair (metal frame w/heavy gauge plastic seat and back)	\$1.75
Folding Chair (metal frame w/heavy-gauge plastic seat and back)	\$1.20 (available in Black and Red)



LINENS

LINENS

90" x 132" Rectangular Tablecloth	\$18.00
90" x 156" Rectangular Tablecloth	\$18.00
120" Round Tablecloth	\$15.00
108" Round Tablecloth	\$13.00
90" Round Tablecloth	\$11.00
60" x 120" Rectangular Tablecloth	\$11.00
20" x 20" Napkins	\$0.60

Most commonly rented sizes listed above.

Many other sizes and color options. Please call for availability.

Tablecloths will cover the table and appear flowy. Tablecovers slip over the table and fall straight to the floor for a tailored fit. These are best utilized on buffet or display tables, not dining tables with chairs.

SPECIALTY COVERS

4' Complete Serpentine Tablecover - White or Black	\$15.00
5' Complete Serpentine Tablecover - White or Black	\$15.00
6' Complete Tablecover - Black	\$15.00
8' Complete Tablecover - Black	\$15.00
Complete Black Cover for 30" Pedestal Table	\$10.00
Cover for Waiter Tray Stand - Black	\$6.00

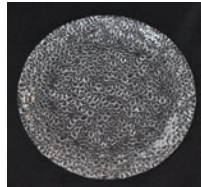
Plastic covers for rectangular and round tables available for purchase.

SKIRTS (PLEATED)

21' x 29" Tableskirt - White	\$20.00
13' x 29" Tableskirt (White, Black, Ivory, Hunter Green, Royal Blue, and Victorian Rose Ivory)	\$13.00
11' x 29" Tableskirt - White	\$10.00
8' x 29" Tableskirt (White, Black, and Victorian Rose Ivory)	\$8.00

All skirting is velcro lined and comes with clips which are sized for 3/4" thick tables.

TABLE SETTINGS



DISHWARE

Round China (white w/gold rim)

10" Dinner Plate	\$0.60
9" Round Salad/Soup Bowl	\$0.40
7.5" Bread/Dessert Plate	\$0.40
6.5" Bread/Butter Plate	\$0.35
6" Saucer	\$0.30

Scalloped China (white)

10.75" Plate	\$0.60
8" Salad/Dessert Plate	\$0.40
6.5" Bread/Dessert Plate	\$0.35

10" Square White Dinner Plate (white)

10" Round Glass Dinner Plate

8" Round Glass Plate

8.25" Round Pebbled Glass Plate

FLATWARE

Gold Dinner Knife \$0.50

Gold Salad/Dessert Fork \$0.50

Gold Dinner Fork \$0.50

Gold Teaspoon \$0.50

Dinner Knife \$0.30

Dinner Fork \$0.30

Salad/Dessert Fork \$0.30

Teaspoon \$0.30

Soup Spoon \$0.30

Steak Knife \$0.30

Butter Spreader \$0.30

ACCESSORIES

White China Creamer \$1.00

White China Sugar Bowl with Lid \$1.00

Decorative Glass Creamer \$1.00

Decorative Glass Sugar Bowl \$1.00

Stainless Creamer \$1.00

Sugar Packet Holder \$0.50

Salt & Pepper Shaker set (pre-filled) \$1.00

Tall/Short Table Number holders¹ \$1.50/\$0.50

DRINKWARE

China Coffee/Tea Cup \$0.50

Coffee Mug \$0.50

Large Red Wine Glass \$0.75

Fluted Champagne Glass \$0.30

White Wine Glass \$0.30

Pilsner Glass \$0.30

Martini Glass \$0.30

Red Wine Glass \$0.30

Tumbler \$0.30

Goblet \$0.30

Bowl Champagne Glass \$0.30

Highball Glass \$0.30

Rocks Glass \$0.30

Punch Cup \$0.25

POLICIES

RESERVATION AND PAYMENT POLICIES:

To confirm a reservation, a 25% non-refundable deposit is required.

We will hold an order for 7 days pending receipt of the deposit. Payment is due in full at time of pickup or delivery. We accept all major credit cards. There is a \$25 charge for returned checks. All checks will be electronically processed.

STANDARD DELIVERY:

The hours for **standard delivery and pick-up are Monday - Friday 8:30 am - 5:00 pm, and Saturday 8:30 am - 12 noon.** The fee for delivery AND pick-up within the city limits of Chattanooga is **\$100 minimum.** For delivery only OR pick-up only, the minimum fee is \$50 one way.

BEFORE/AFTER HOURS:

The Before/After Hours delivery AND pick-up minimum fee is \$200. For Before/After Hours delivery only OR pick-up only, the minimum fee is \$100 one way.

Before Hours is 7:00 - 8:30 am and After Hours is 5:01 - 9:00 pm. Premium After Hours pickup and delivery **is from 9:01 - 11:00 pm.**

Additional fees may be applied at employee's

discretion, depending upon location and amount of equipment rented. Any work before 7:00am and after 11:30pm is subject to our discretion and safety.

EXTENDED DELIVERY:

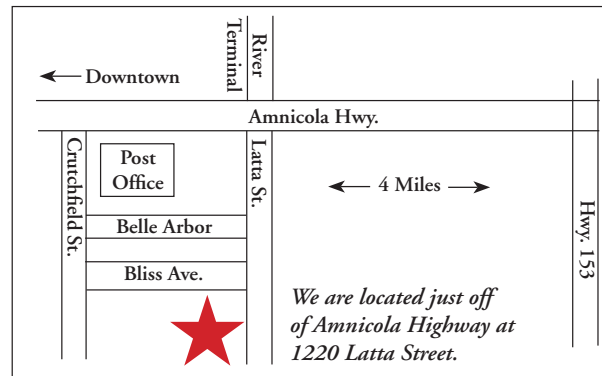
Any delivery or pick-up more than 10 miles from our Latta Street office (Amnicola Highway) is charged at \$4 per mile (measured one way). **We will not deliver or pick-up over 50 miles from our showroom.**

WHAT DELIVERY & PICK-UP SERVICES INCLUDE:

Delivery and pick-up services include unloading and loading all rented equipment at the rental address. At the driver's discretion, the equipment may be taken (rolled or carried) to the exact site for set-up. Delivery and/or pick-up services do not include for ShowTime employees to hand carry equipment through narrow doors, up or down stairs, or distances over 35 feet. Any of the above scenarios for equipment delivery or pick-up will be subject to a minimum fee of \$20 per hour per employee.

Delivery and/or pick-up services do not include set-up or take down. If the equipment is not set-up by ShowTime employees, ShowTime will expect the equipment to be stacked in the same place and condition it was received by the customer. In the event equipment is still set up when we arrive to pick-up, reasonable take down charges will be added to the contract.

If you desire for ShowTime employees to set-up and/or take down your rental equipment, please discuss your needs with your ShowTime representative when you reserve your equipment.



www.showtimechattanooga.com



423-624-2040 ★ 423-629-4826 (Fax)

Prices and policies are subject to change without notice. 2/2019

A minimum of 7 days notice is required to secure rental equipment. An additional 20% fee will be charged for short notice (less than 7 days)

CATERING EQUIPMENT

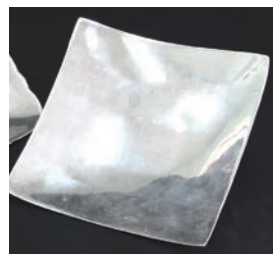
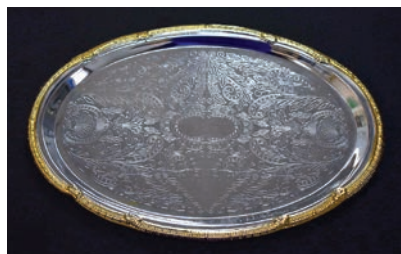
Silver Punch Fountain - 3, 5, or 7 gallons	\$40.00/\$45.00/\$50.00
Silver Punch Bowl - 3 or 5 gallons	\$20.00/\$25.00
add ladle for Punch Bowl Set	add \$5.00
8 Qt Rectangle Rolltop Chafing Dish w/sterno	\$20.00
8 Qt. Rectangular Chafing Dish w/sterno	\$15.00
7 Qt. Round Soup Chafing Dish w/sterno	\$10.00
6 Qt. Oval Chafing Dish w/sterno	\$12.00
4 Qt. Round Chafing Dish w/sterno	\$10.00
Stainless Coffee Brewer – 40, 55, or 100 cups	\$10.00/\$15.00/\$20.00
2-tone Coffee Urn w/sterno – 48 or 80 cups	\$25.00/\$30.00
25 Cup Silver Coffee Urn w/sterno	\$20.00
25 Cup Silver Samovar w/sterno.	\$20.00
Acrylic beverage dispenser (2-3 gal)	\$20.00

DISPLAY STANDS

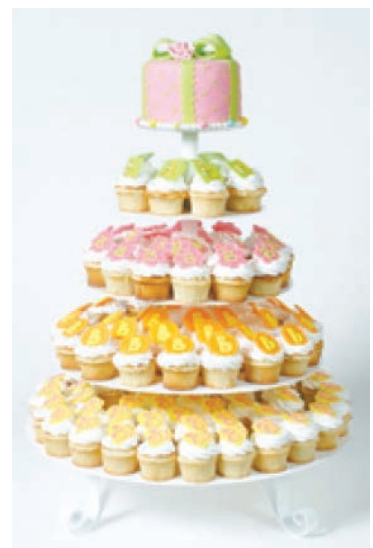
Classic 2-Tier Display Stand – 14” and 18” Trays (18” tall)	\$35.00
Classic 3-Tier Display Stand – 14”, 18” and 21” Trays (24” tall)	\$40.00
2-Tier 3-Shell Display Stand: (3) 9” Shells and 24” Tray (18” tall)	\$35.00
2-Tier 5-Shell Display Stand:	
(2) 9” Shells and (3) 9” Shells (16” tall)	\$35.00
3-Tier Stone Display	\$35.00
3-Tier Clear Acrylic Food Display – (3) 24” oval trays	\$25.00
Triple 19” round zen display with stand	
(holds 1 sterno, trays can also be chilled)	\$40.00

SERVICE EQUIPMENT

Portable Carving Station	\$25.00
Cambro Beverage Container/Dispenser – 3 or 5 gallons	\$8.00/\$12.00
Waiter Tray	\$4.00
Waiter Tray Stand	\$4.00
Thermal Carafe	\$2.00
Clear Plastic Water Pitcher	\$1.00
Wire Bread Basket.	\$1.50
Stainless Serving Spoon or Fork.	\$0.50



Popcorn Machine with 6 oz. Kettle	\$35.00
Food Transport Box (4 pan capacity)	\$20.00
Large Food Transport Box (6 pan capacity)	\$25.00
Electric Food Transport Box 160 degree (4 pan capacity).	\$50.00
Heated Holding Transport Cabinet	\$80.00



CAKE STANDS

5-Tier Cupcake Stand (round or square)	\$35.00
4-Level Cake Pop Stand.	\$30.00
22” Round Cake Stand - (silver or gold)	\$25.00
18” Round Cake Stand - (silver or gold)	\$18.00
14” Round Cake Stand - silver	\$15.00
22” Square Cake Stand (gold)	\$25.00
18” Square Cake Stand (silver or gold)	\$18.00
14” Square Cake Stand - silver.	\$15.00

TRAYS

12” Square Zen Serving Dish	\$8.00
12” x 18” Rectangular Scalloped Zen Tray	\$8.00
14” Scalloped Zen Bowl	\$8.00
18” x 21” Rectangular Zen Tray with Stand	\$10.00
21” round zen bowl with stand	\$10.00
Rectangle Trays ranging in sizes 11” x 15” - 18” x 24	\$4.00 - \$6.00
Round Trays ranging in sizes 12” - 20”	\$3.00 - \$10.00
Oval Trays ranging in sizes 13” x 18” - 20” x 25”	\$6.00 - \$20.00

See website for pictures of each size

www.showtimechattanooga.com



423-624-2040 ★ 423-629-4826 (Fax)

Prices and policies are subject to change without notice.
2/2019

A minimum of 7 days notice is required to secure rental equipment.
An additional 20% fee will be charged for short notice (less than 7 days)

TENTS



Delivery charge is additional to setup of tents.



POLE TENTS

30' x 40' - White - includes setup	\$700.00
20' x 40' - White - includes setup	\$500.00
20' x 30' - White - includes setup	\$400.00
20' x 20' - White	\$150.00
Water-filled Tent Weight w/ covers	\$15.00

FRAME TENTS

20' x 40' - White - includes setup	\$650.00
20' x 30' - White - includes setup	\$450.00
20' x 20' - White - includes setup	\$350.00
10' x 10' E-Z Up Tent - White	\$60.00
Tent Sidewall - per foot	\$1.00

SPECIAL EVENTS

DECOR

Ivy Archway	\$35.00
Wrought Iron Archway w/Columns ..	\$45.00
Walkthrough Arch - Brass	\$35.00
Brown Metal Arch, Vine & Flower ..	\$35.00
Four Globe Lampost	\$30.00
Tabletop "Stone" Fairy Fountain	\$30.00
Decorative Kissing Fairy	\$25.00
Tabletop Fairy on Gazing Globe	\$10.00
Silver Hanging Lantern - 5.5' Tall	\$15.00
Silver or Black Hanging Lantern 3' Tall	\$10.00
8' Tall Round Column (white)	\$15.00
6' Tall Round Column (white)	\$10.00
3.5' Tall Round Column (white)	\$8.00
Colonnade (white)	\$10.00
3' Tall Square/Floral Column (dark grey "stone")	\$10.00
4' Tall Square/Floral Column (dark OR light grey "stone")	\$10.00
50" Tall Carousel Horse	\$50.00
36" Tall Carousel Horse	\$25.00
35" Tall Urn (brown or light grey "stone")	\$10.00
Raffle Drum (brass)	\$10.00
Easel (gold or wood)	\$10.00

Money Tree (brown or white metal) 52" tall	\$10.00
---	---------

UTILITY

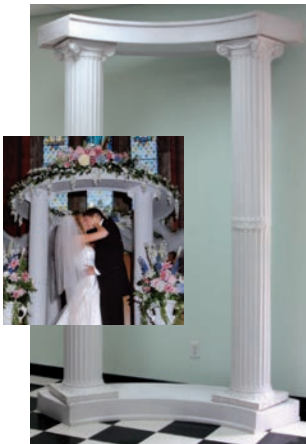
Port-A-Cool Evaporative Cooler	\$75.00
Patio Heaters (2 styles)	\$60.00
Pedestal Fan	\$20.00
8-Burner Gas Grill (includes 40lb propane)	\$110.00
Charcoal Grill	\$40.00
Chill and Fill 6' Table with skirt	\$35.00
Large Rolling Ice Chest	\$30.00
RTIC 65 Qt Ice Chest/Cooler	\$25.00
110 Qt. Igloo Ice Chest/Cooler	\$20.00
6' Portable Bar (clamps to table)	\$35.00
5' Folding Bar w/Ice Chest and Bottle Rack	\$50.00
Chrome Stanchion	\$6.00
8' Velvet Rope (black or red)	\$4.00
Red Carpet (4' x 25')	\$40.00
Rolling Coat Rack (4' tall x 6' wide) ..	\$10.00
Felt-Covered Folding Podium	\$40.00
Register Stand - Brass	\$10.00

STAGING/LIGHTING

3' x 3' Dance Floor section (oak)	\$13.00
4' x 8' Stage section	\$60.00
3 Level Choral Risers	\$60.00
20" Mirror Ball	\$25.00
16" Mirror Ball	\$20.00
Spotlight	\$65.00
Par 36 Light (tent light)	\$10.00
Bubble Machine	\$15.00
Fog Machine	\$50.00

BOOTH EQUIPMENT

Linear Ft. of 8' Pipe & Drape (black, blue, green, ivory, Snow White, and silver) ..	\$3.00
Linear Ft. of 3' Pipe & Drape - (black, green, or blue)	\$1.50
Linear Ft. of 8' Pipe & Drape - black velour (light blocking - "black out" look) ..	\$5.00
Wastebasket - black	\$2.00
8' base	\$1.50
8' upright	\$1.00
3' upright	\$1.00
3' base	\$1.00
Telescoping rod	\$1.00



www.showtimechattanooga.com



423-624-2040 ★ 423-629-4826 (Fax)

Prices and policies are subject to change without notice.
2/2019

A minimum of 7 days notice is required to secure rental equipment.
An additional 20% fee will be charged for short notice (less than 7 days)