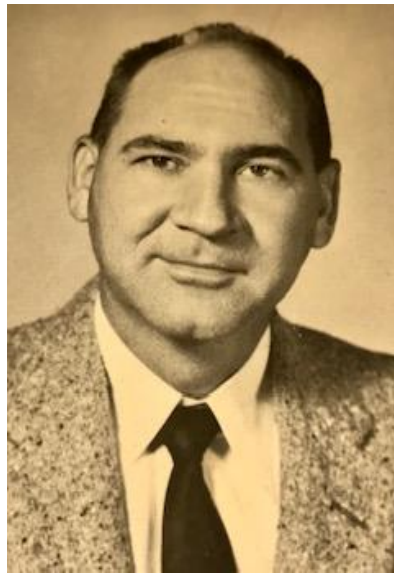


Teachers and Administrators of the 1950's

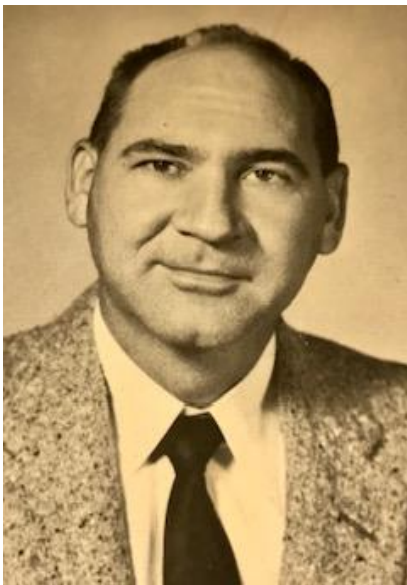
Administration



**O. K. Wolfenbarger
Superintendent
1949 - 1952**



**Ronald Jenkins
Principal
1950 - 1952**



**Ronald Jenkins
Superintendent/Principal
1952 - 1956**



**Ivan Wade
Superintendent/Principal
1956 - 1958**



Ira A. Murphy
Superintendent
1958 – 1959



Melvin Huber
Principal
1956 – 1959

Teachers of the 1950's



Juanita Allen
Home Economics
1951 – 1953



Kenneth Amspoker
Social St. / Ind. Arts
1949 – 1954



Frances Amspoker
English
1953 – 1954



Vivian Amspoker
Physical Education
1951 – 1954



Barry Arney
P.E./Dr. Educ.
1955 – 1959

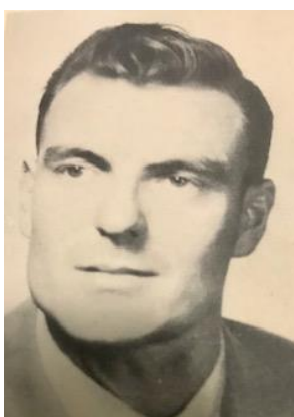


Alford Banta
Agriculture
1950 – 1952

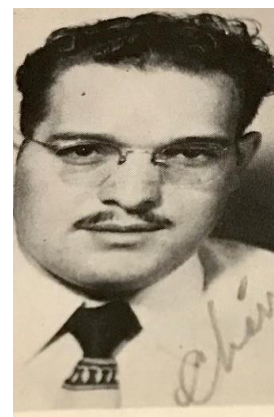


Miss Benton

1956 – 1958



Don Bullard
Science/PE
1949 – 1951



Ulban Chavez
Spanish
1949 – 1954



Mrs. Cherry
Home Economics
1958 – 1959



Mrs. Condor
Home Economics
1958 – 1959



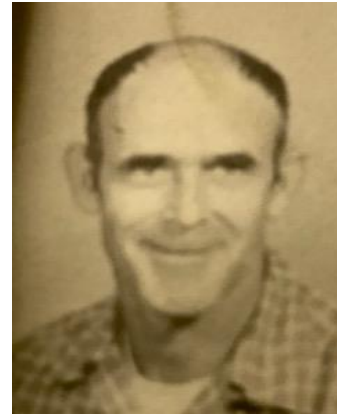
Dorothy Conner
1953 – 1955



Isabel Daou
Spanish / P.E.
1949 – 1950



Jay Dean
1959 – 1960



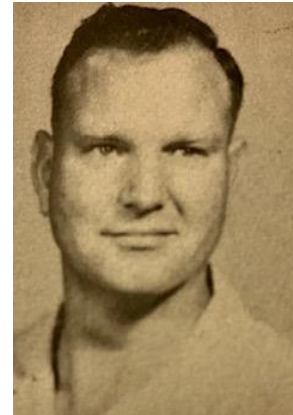
Mr. Delaney
Social St. / English



Melvin Dolson
Mathematics
1949 – 1959



Catherine Dundee
1951 – 1953



Claude Edge
English / Math
1956 – 1959



Harriett Eiden
English / Business
1950 – 1951



Lucille Elliott
Business
1955 – 1958



Winston Elliott
Spanish/Ind. Arts
1954 – 1958



Ted Fowler
1955 – 1957



Mrs. Geriets
1955 – 1958



Mr. Gill
1950 – 1953



Dale Goodwin
Agriculture/Ind. Arts
1955 – 1957



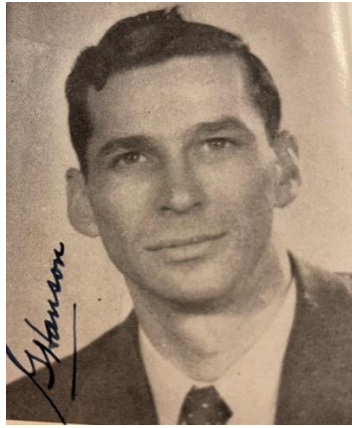
Dean Gordon
1949 – 1952



Betty Graham
1952 – 1953



Mrs. Graves
Social Studies
1958 – 1959



Eugene Hansen
Music
1949 – 1950



Naomi Hieronymus
English
1950 – 1959



Helen Heskett
Physical Education
1950 – 1952



LaVonne Hoffman (LaNasa)
Home Economics
1949 – 1951



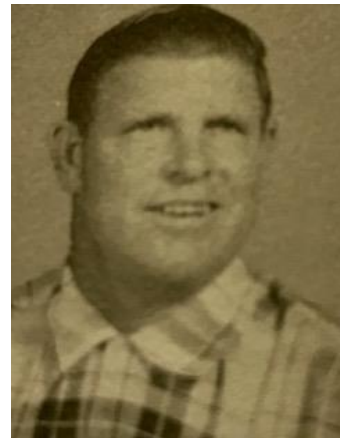
Charlotte Hornung
Business
1949 – 1950



Mary Howe
English
1949 – 1959



Melvin Huber
Agriculture
1949 – 1956



Joe Hunter
Social St./Ind. Arts
1958 – 1959



Thomas Hyde

1952 – 1954



Raymond Kellis
Biology / Photo

1956 – 1959



Ray Kiel
Industrial Arts / Art

1958 – 1959



W. E. Kirkpatrick

1954 – 1955



George Kolar

1949 – 1950



V. G. LaTourrette
Agriculture

1949 – 1950



Susan Marks
Physical Education

1955 – 1959



Miss Mason
Business

1958 – 1959



Edward McFadden
Science

1949 – 1959



Robert Mendenhall
Agriculture
1955 – 1958



Ray Mitokawa
Social Studies
1954 – 1959



Frances Nabors
1950 – 1951



Patricia O'Neil
1950 – 1951



Marilyn Patrick (Mikes)
Business
1954 – 1959



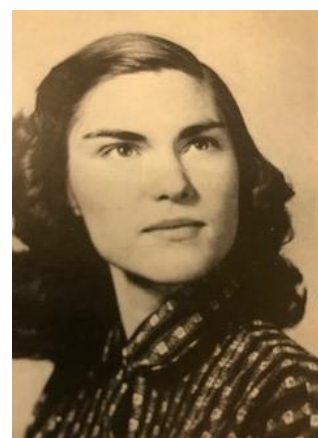
Loren Peters
Music
1950 – 1952



E. R. Peterson
1953 – 1955



Bill Polete
Business / P.E.
1951 – 1954



Temple Pound
1954 – 1955



Don Saba

1954 – 1955



**Duke Sherod
Band**

1956 – 1959



**Mr. Stucki
Agriculture**

1958 – 1959



Beth Swanson

1953 – 1955



Doris Ann Thomas

1953 – 1956



Felix Winslow

1953 – 1954



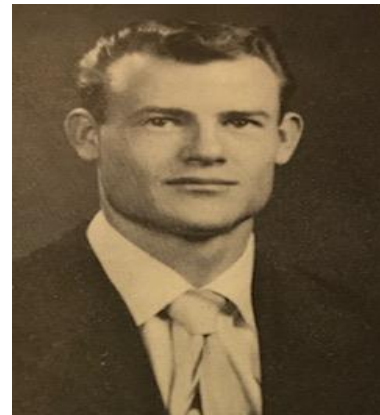
**Hazel Schmidt
District Secretary**

1949 – 1959



**Louise Weaver
School Nurse**

1949 – 1959



**J. E. Hoffman
Music**

1955 – 1957