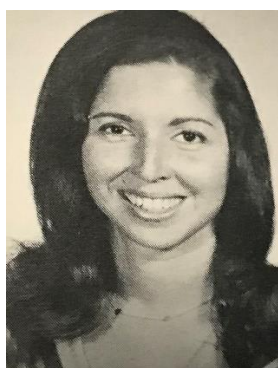


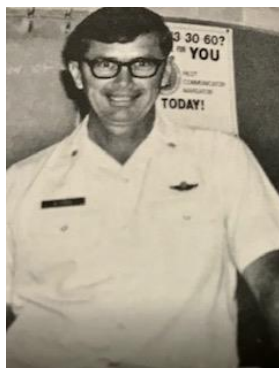
Peoria Teachers of the 1970s



Rich Ackerman
Woodworking
1974 – 1978



Ilene Adams(Blau)
Reading
1973 - 1979



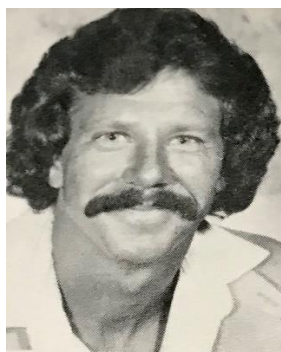
Don Alford
ROTC
1973 – 1974



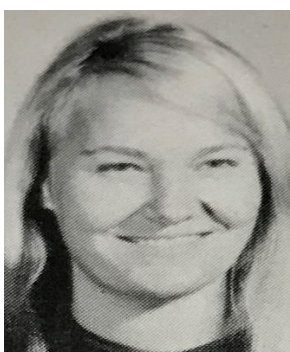
Marilyn Anderson
Art
1973 – 1978



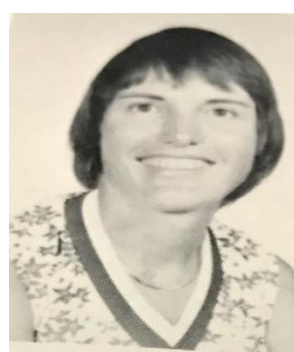
Barry Arney
Physical Education
1969 – 1979



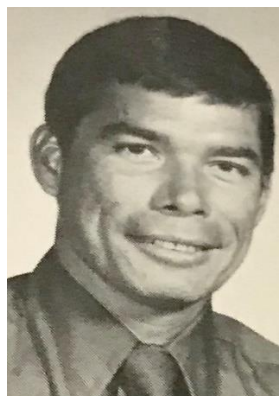
Scott Baldock
Science
1977 – 1979



Mrs. Barker
1970 – 1971



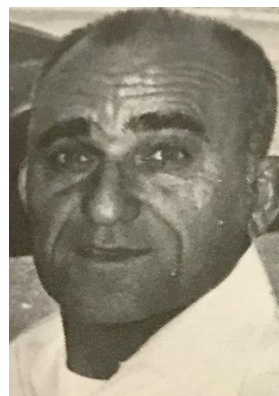
Barbara Benson
English
1973 – 1979



Stan Berg
English
1974 – 1978



Judy Bergraff
Business
1974 – 1975



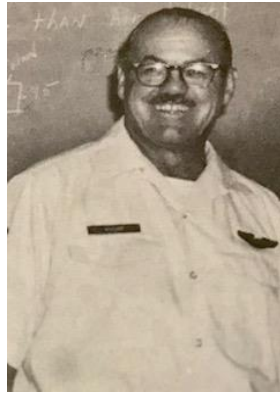
Tony Berki
Industrial Arts
1974 – 1979



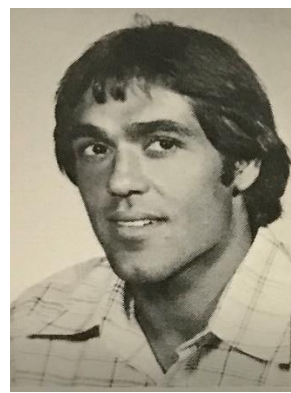
Jacque Boker
Business
1969 – 1971



Barbara Border
Home Economics
1969 – 1970



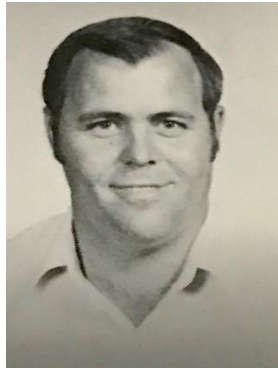
Ed Bouchard
ROTC
1973 – 1974



Tony Bracciale
PE/Business
1975 – 1979



Marge Bromley
Reading
1977 – 1978



Jim Brown
Agriculture
1969 – 1978



Murr Brown
Industrial Arts
1973 – 1974



Jane Bryan
English
1977 – 1978



Mrs. Burkhardt
English
1972 – 1973



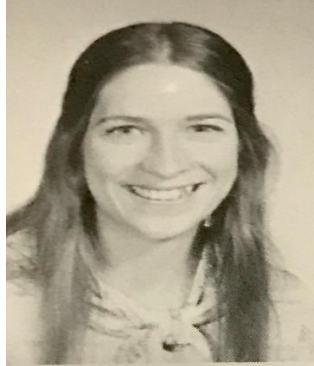
Ellen Cameron
Social Studies
1974 – 1979



Betty Campbell
Chorus
1974 – 1975



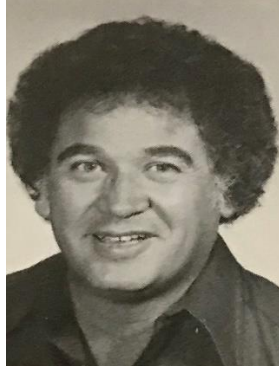
Barbie Carlile
Spanish
1976 – 1979



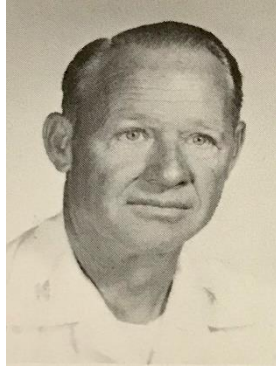
Shari Carrel
French
1976 – 1979



Lois Chappell
Special Education
1974 – 1979



Tom Chavez
Spanish/Counselor
1969 – 1979



Paul Coke
ROTC
1974 – 1979



Robert Colucci
ROTC
1974 – 1979



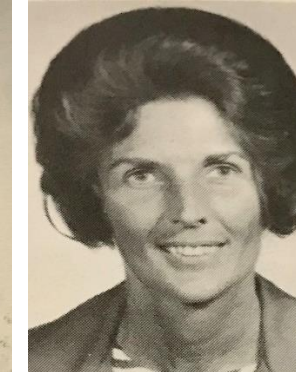
Don Cross
Industrial Arts
1977 -1978



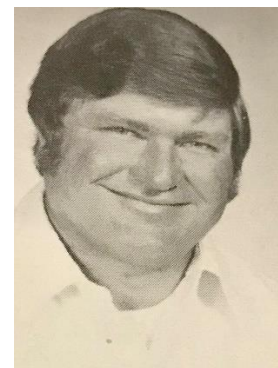
Bob Crump
Band
1977 – 1979



Paula Cupell
English
1972 – 1979



Noreen Daley
Home Economics
1973 – 1979



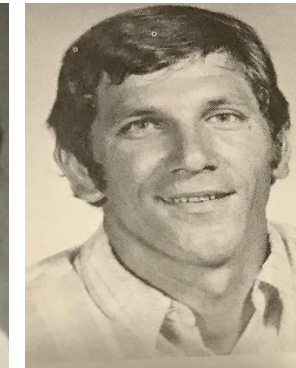
Rob DeSeelhorst
Science/Career Ed.
1970 – 1978



Mary Detrie
Art
1973 – 1979



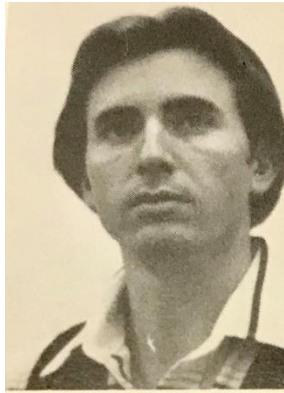
Ellen Elford
Nurse
1978 – 1979



Bob Feist
Physical Education'
1975 – 1979



Tomlin Fields
French
1969 – 1970



Phillip Ferguson
Chorus
1978 – 1979



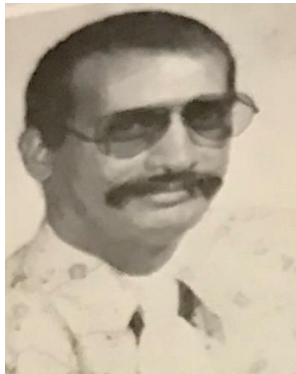
Joy Fitzgerald
Art
1971 – 1973



Bill French
Business
1969 – 1972



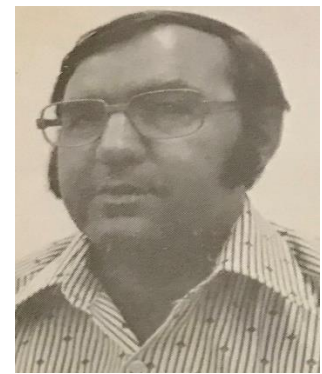
Bill Gollihare
Business
1973 – 1979



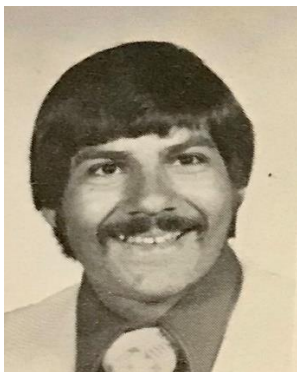
Steve Gonzalez
Spanish
1978 – 1979



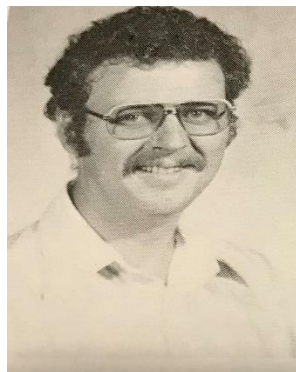
Bobby Gonzalo
Social Studies
1972 – 1979



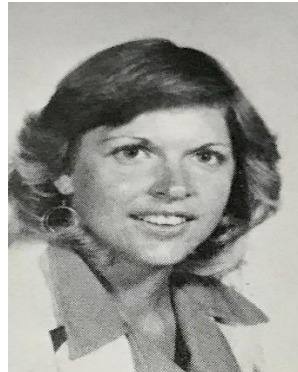
Tony Gonzalo
Spanish
1973 – 1979



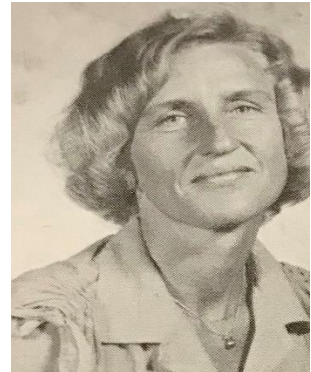
Richard Greco
Chorus
1975 – 1978



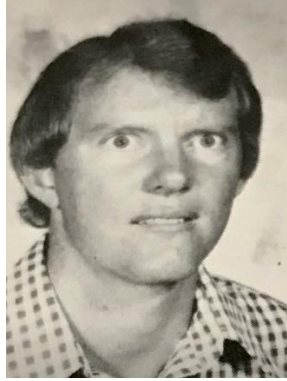
Don Hatch
English
1978 – 1979



Randi Haws
Career Education
1976 – 1977



Abby Hemingway
Social Studies
1976 – 1979



Ron Hildreth
Science
1973 – 1979



Harriet Holly
Career Education
1978 – 1979



Mary Howe
English
1969 – 1974



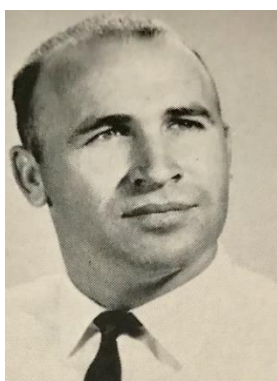
Peggy Hudson
English
1971 – 1978



Elda Huling
Librarian
1969 – 1979



Joe Hunter
Industrial Arts
1969 – 1974



Bob Johnson
S.Studies/Counselor
1969 – 1974



Sally Johnson
Counselor
1977 -1979



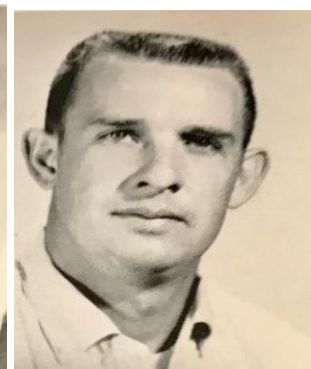
Linda Kane
English
1972 - 1973



Debbie Kennedy
Career Education
1978 – 1979



Dave Kerns
Mathematics
1976 – 1979



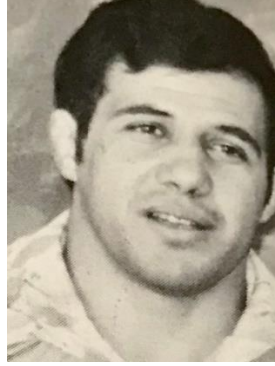
Ray Kiel
Industrial Arts
1969 – 1972



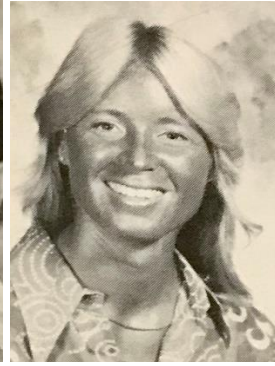
Gary Kiser
Business
1976 – 1978



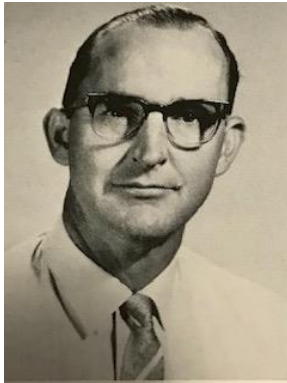
Jan Knudson
Reading
1975 – 1979



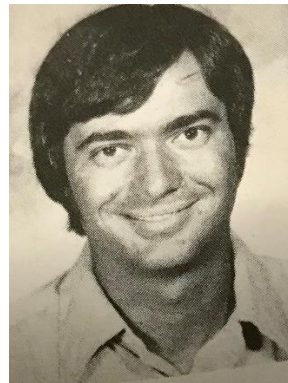
Mike Koury
Mathematics
1975 – 1979



Jan Laakso
P.E./Social Studies
1977 – 1978



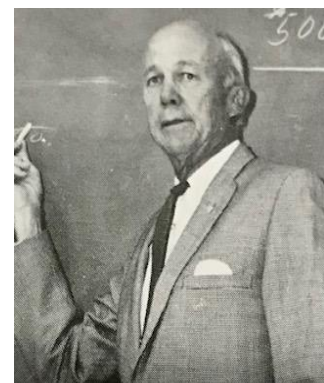
Phil Liggett
Science
1969 – 1978



Don Losito
Auto
1972 – 1979



Virginia Ludders
English/Drama
1977 – 1978



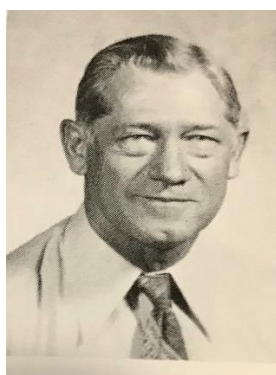
Mr. Luthy
Business
1972 – 1973



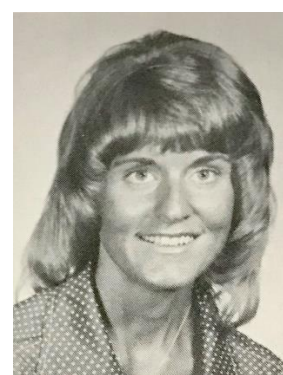
Bill Lynch
Chorus
1970 – 1973



Bill Maas
Math/Counselor
1972 – 1979



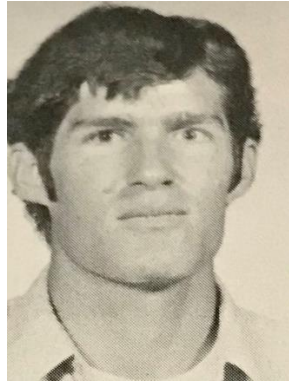
George Maertens
Counselor
1975 – 1979



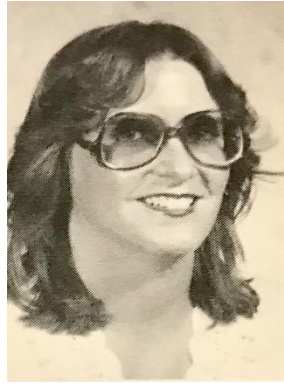
Cindy Makowski
Home Economics
1970 – 1978



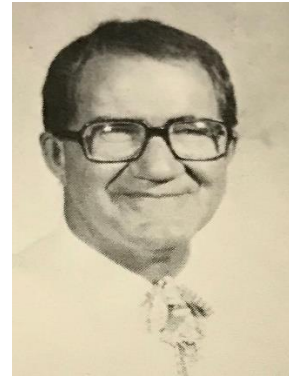
Rusty Maness
English
1975 – 1978



Gary Mangin
English
1975 – 1978



Joyce Marini
Special Education
1977 – 1979



Bill Martin
Science
1969 – 1979



Bill Maschger
Band
1969 – 1974



Sharon Mathias
Physical Education
1975 – 1979



Willard Mattingly
Reading
1976 – 1979



Mr. McMillan
Business
1973 – 1974



Olivia Meyers
Ceramics
1972 – 1973



John Miller
Science
1971 – 1978



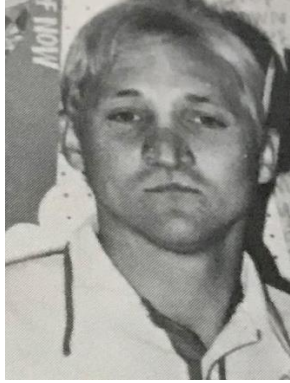
Lee Mitchell
Special Education
1973 – 1979



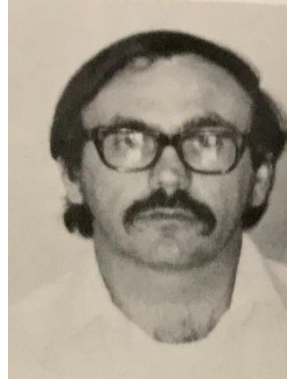
Ray Mitokawa
Social Studies
1969 – 1971



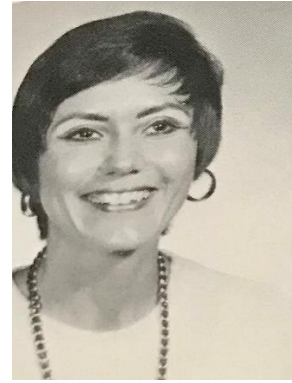
Gayle Moman
Physical Education
1974 – 1976



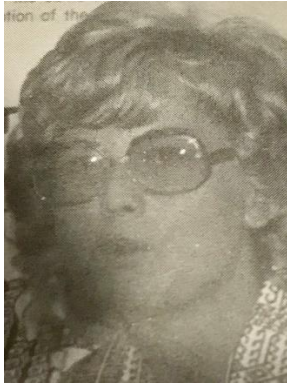
Dave Moore
Social Studies
1972 – 1978



Guy Morris
Industrial Arts
1976 – 1979



Melody Mroski
Business
1974 – 1979



Donna Parrott
Art/Business
1977 – 1978



Nellie Peters
English
1974 – 1978



Mary Pinkerton
Home Economics
1969 – 1971



Janet Pisciotta
Business
1972 – 1973



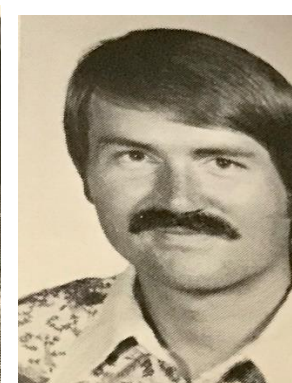
Linda Porter
Chorus
1977 – 1978



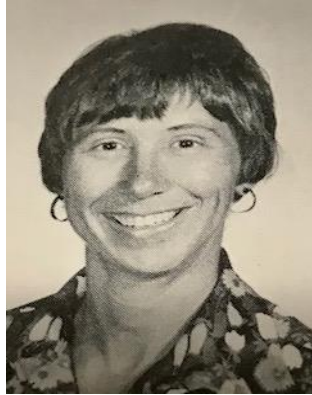
Kathy Potter
Mathematics
1973 – 1978



Chris Price
English
1977 – 1978



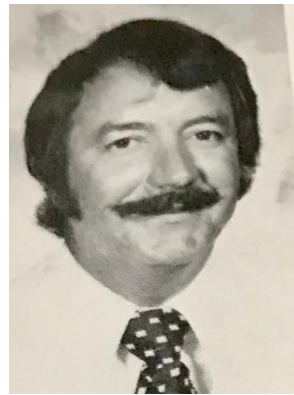
Ron Price
English/Film
1971 – 1978



Sue Quinby(Johnson)
Social St./Counselor
1969 – 1978



Cathy Robertson
Business
1975 – 1976



David Rodriguez
Mathematics
1969 – 1978



Eloise Rohner
Science
1974 – 1978



Jim Rolfs
Mathematics
1969 – 1975



Barbara Ruhlman
Physical Education
1976 – 1978



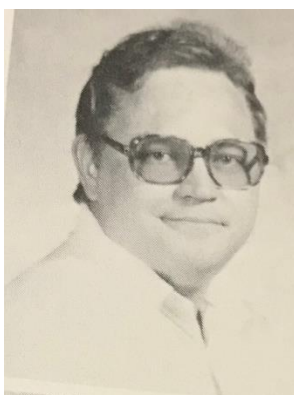
E.L. Sanders
Business
1976 – 1978



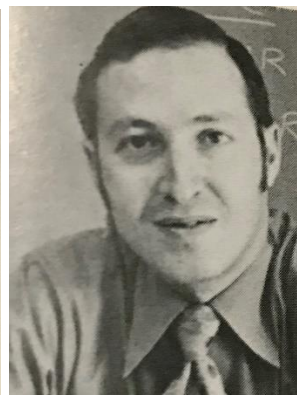
Nell Sanders
Physical Education
1969 – 1977



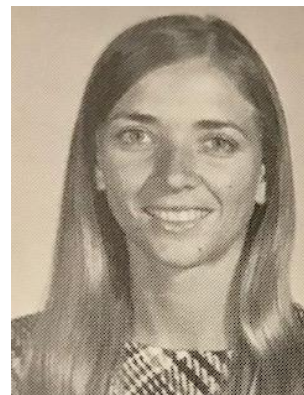
Deanna Scholnik
English
1971 – 1978



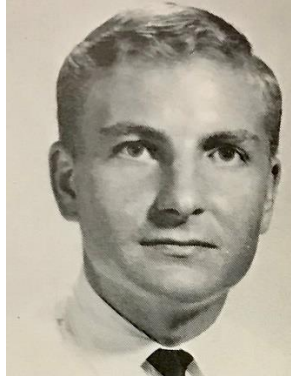
Ron Selim
Drama/German
1978 - 1979



Andre Seigal
Special Education
1975 – 1977



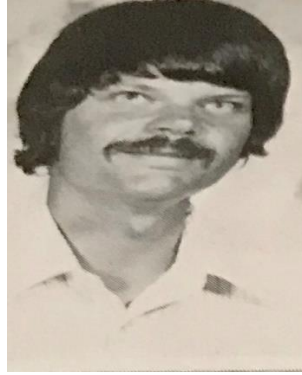
Patty Shillington
Physical Education
1971 – 1974



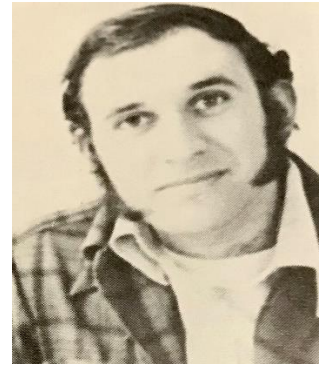
Ron Sipus
English
1969 – 1970



Pat Smith
Business
1971 – 1978



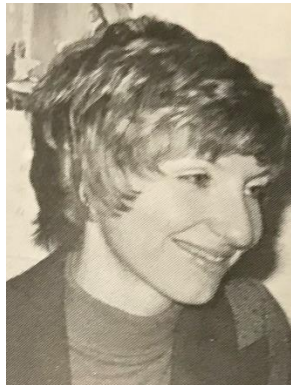
Richard Sonandres
Special Education
1975 – 1979



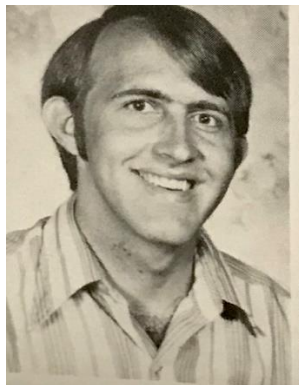
Lewis Sorci
Industrial Arts
1973 – 1976



Larry Sparling
Science
1976 – 1979



Geri Spencer (Hulse)
Reading
1975 – 1978



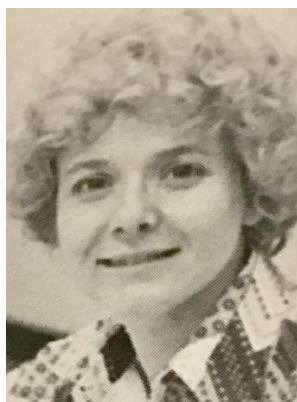
Mike Stapley
Mathematics
1977 – 1978



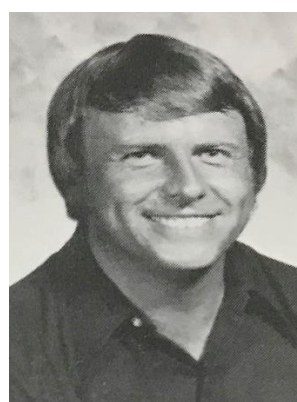
Darlene Staussen
CUES
1978 – 1979



Sandy Stephens
Home Economics
1978 – 1979



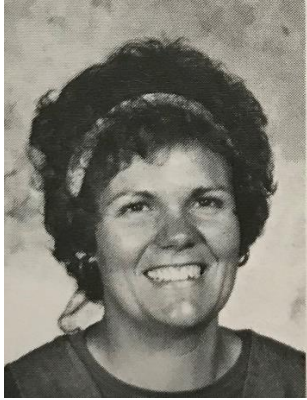
Frances Sis Sullivan
Spanish
1970 – 1976



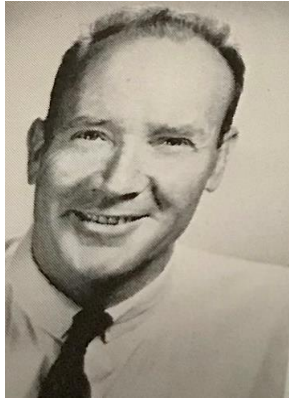
Byron Sutton
Social Studies
1977 – 1979



Joan Swantes
Counselor
1973 – 1974



Joleen Tieman (Hunt)
Home Economics
1974 – 1979



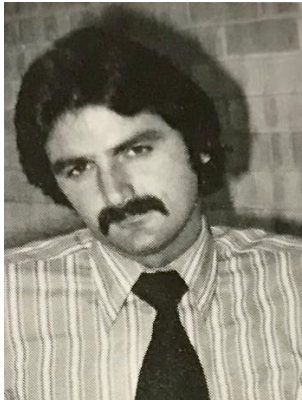
Milt Turner
English
1969 – 1975



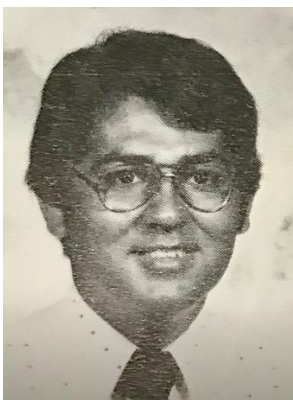
Margarita Valdez
Spanish
1972 – 1973



Carol VanMeter
Home Economics
1971 – 1973



Dennis Vicars
Social Studies



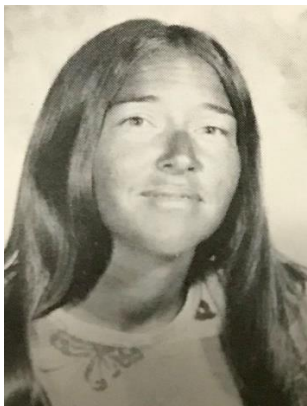
Gil Villasenor
Spanish



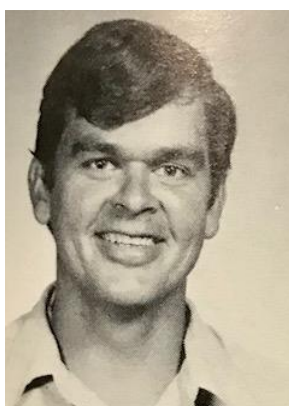
James Watkins
Agriculture



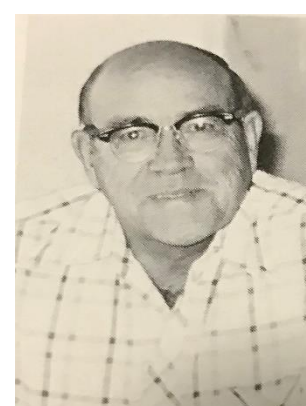
Julie Watson
Business/Counselor



Pam Weller
Physical Education
1974 – 1979



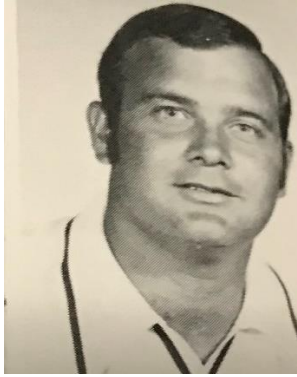
Robert Weller
Band
1975 – 1977



Bob White
Social Studies
1969 – 1978



Mrs. Wiley
English
1971 – 1973



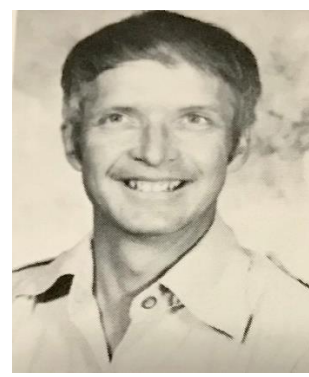
Jim Williams
PE/Social Studies
1972 – 1978



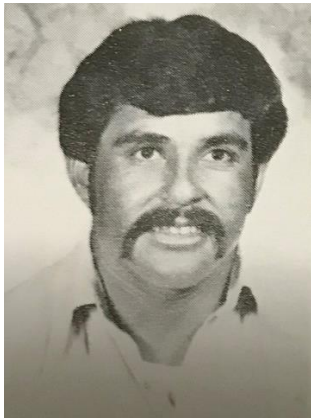
Naomi Williamson
English
1969 – 1979



Bonnie Wolff
Chorus
1973 – 1974



Rodney Wright
Art/Ceramics
1973 – 1979



Gilbert Zamudio
Agriculture
1977 – 1979



Kim Fischer
English / Business
1978 - 1979

Not Pictured

Mildred Travis - English – 1978 – 1978

Mrs. Swallow - 1972 - 1978

