

*SHUELSKAMP*  
LUXURY HOMES



Crafted  
Stylish  
Natural  
Relaxed  
Fresh  
Light  
Airy  
Luxury

# Life Inspired

Set in Oak Tree, Wiregrass is surrounded by familiar places, opportunities for entertainment, and the necessities you need. Enjoy stunning golf course views, a multitude of convenient shopping and services, and easy access to Edmond and Northwest Oklahoma City.

*W* Wiregrass

*This is your place.*







## Established Community

Become part of an award-winning master-planned community, with friendly families and active kids.

## Recreation

Join Oak Tree — the spot for families to gather, play and relax. Featuring two Pete Dye 18-hole championship golf courses, indoor and outdoor tennis courts, Olympic sized pool, onsite babysitting, a fitness center, multiple dining areas and much more.

## Education

Your family will enjoy access to an acclaimed and award-winning Edmond school district with elementary school, middle school and high school just up the road.

## Shopping, Dining, Entertainment

Make a quick trip to Uptown grocery, get your Italian fix at the Pepperoni Grill, grab a burger at the Garage, choose to refill prescriptions at one of two pharmacies (Life Pharmacy or Walgreens), and additional restaurants and services — all just minutes from Oak Tree.





*Enjoy life's possibilities in a serene and stress free environment*



*H*

HUELSKAMP

LUXURY HOMES









# Residence 1

## The Karsten

*Single-story living with 3 Bedrooms, 2 1/2 Bathrooms,  
plus study and an oversized 3 car Garage w/3rd as  
Tandem stall area for golf carts and storage -  
approximately 2873 ft*

**from \$679,000 w/ courtyard lot**







**Karsten Modern Tudor**



**Karsten Modern Farmhouse**



**Karsten English Tudor**





# Karsten 2873

## Optional Floorplan Layouts Available



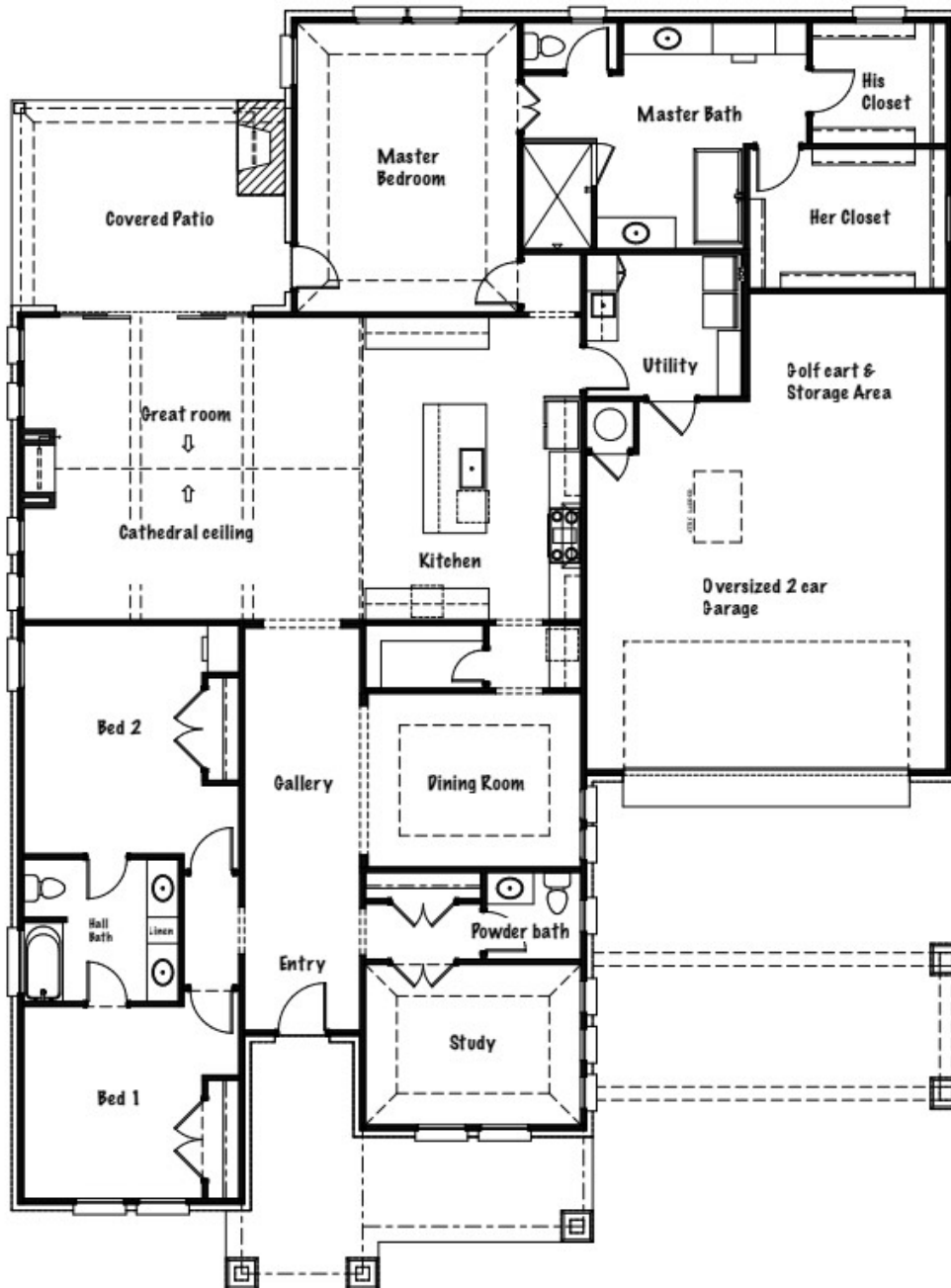
### Options

16' Sliding Door or change to 4 windows and single door

Enlarge Refrigerator expand to 48" or 60" built in

Enlarge Cooktop up to 48"

Eliminate master patio door change to window



BRENT GIBSON  
CLASSIC HOME DESIGN





# Residence 2

## The Augusta

*Single-story living w/ 3 beds & 2 1/2 baths, oversized 3 car garage w/ rear 3rd stall tandem area for golf carts & storage - versions include optional story and a 1/2 w/ two main level master suites - plan expands for larger living w/ up to 5 bedrooms & multiple living spaces - approximately 2907ft*

**from \$699,000 w/ courtyard lot**





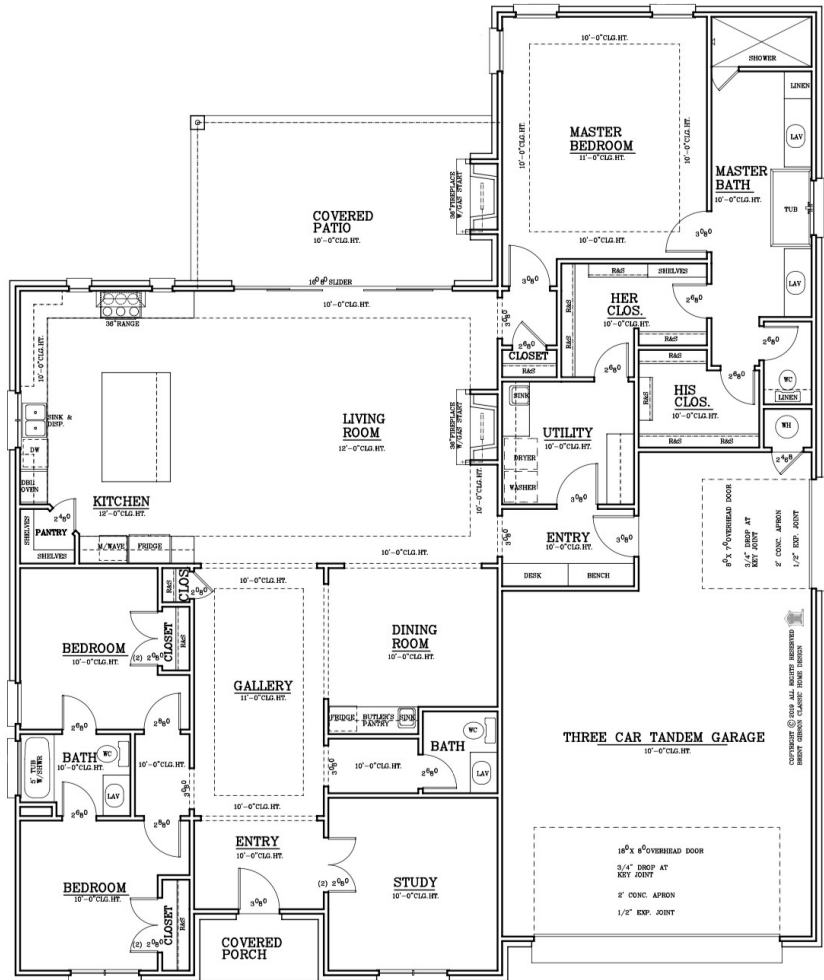




# Augusta 2907

## Optional Floorplan

### Available up to 4500 ft



## Options

2nd master suite in place of two front spare bedrooms - also creates a larger pantry space option

16' Sliding door or change to 4 windows and single door

Add 2nd dining located off rear of kitchen area

Change dining room to a large bar area - also adds 3-4 ft to study

Master bath change linen to makeup sitting area



**BRENT GIBSON**  
CLASSIC HOME DESIGN



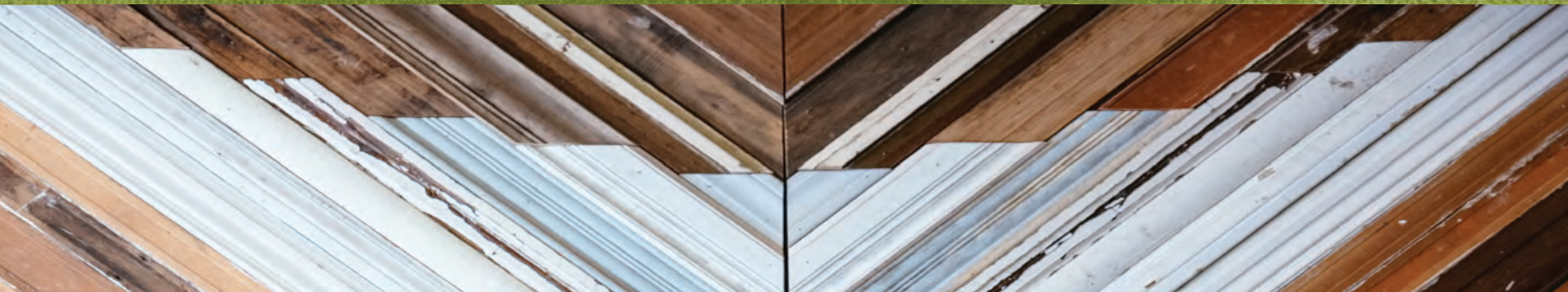


# Residence 3

## The Pinehurst

*Single-story living with 3 beds, 2 1/2 Bathrooms or change to just 2 beds w/ a study/second living area downstairs, a 3 car tandem style garage for golf carts and storage - plan available with additional upstairs bedrooms and living spaces - approximately 3064 ft*

**from \$719,000 w/ courtyard lot**





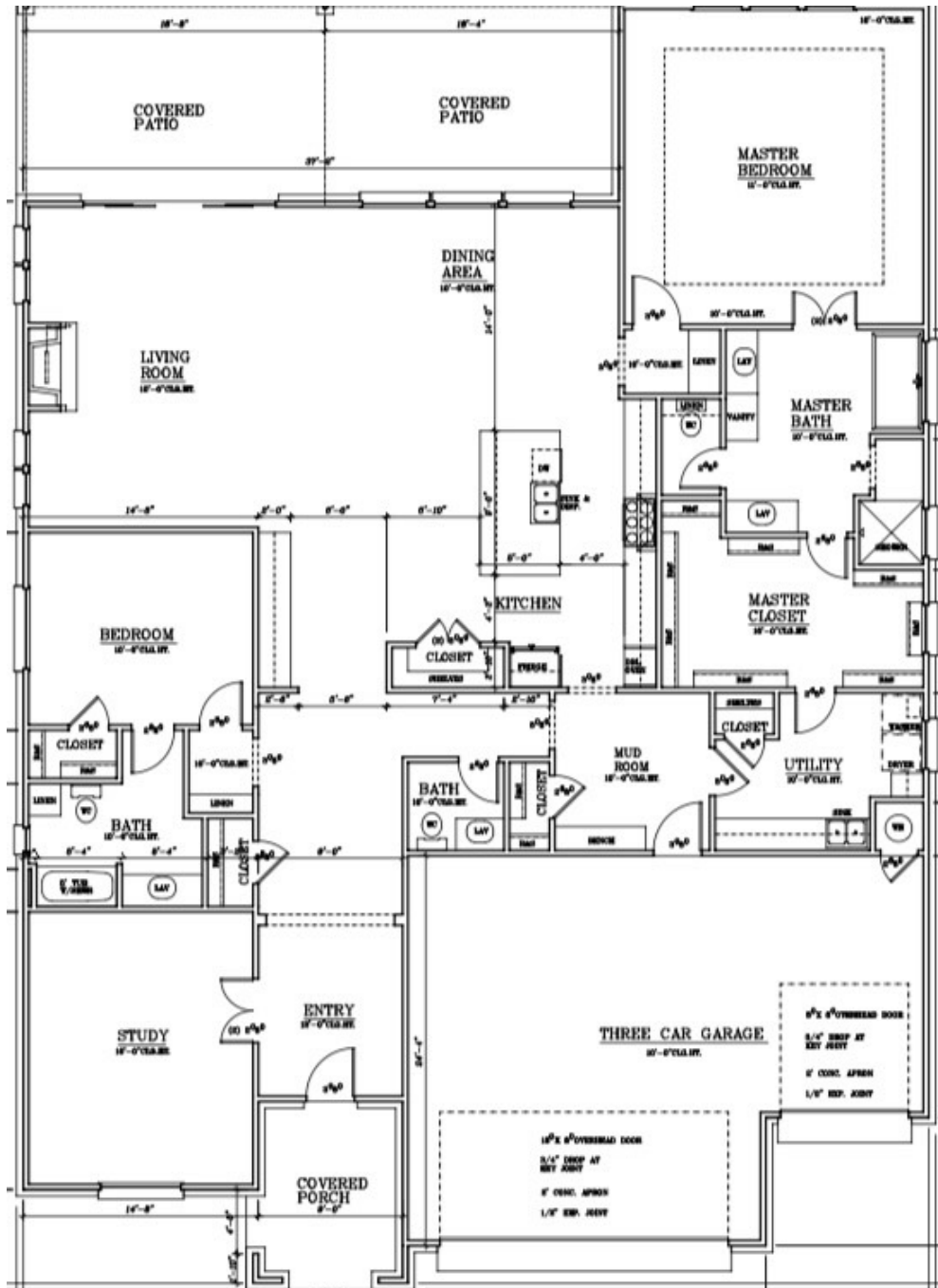
# Preliminary Exterior Elevations





# Pinehurst 3064

## Optional Floorplan Layouts Available



### Options

12' Sliding doors change to 3 windows and a single door

Change Study to a 3rd Bedroom

Enlarge Refrigerator to 48" - 60" wide built-in version

Enlarge Cooktop at up to 48"



**BRENT GIBSON**  
CLASSIC HOME DESIGN

Model may reflect structural configuration options that incur additional costs.





# Residence 4

## The Sawgrass

*One and a half story living w/ 3 beds & 2 1/2 baths, oversized 3 car garage w/ 3rd stall as tandem area for golf carts & storage - versions include optional two-story w/ on suite baths, additional entertaining bath, second upstairs game/theatre room, bar area optional upper balcony - lower level expansion options also available - approximately 3526 ft*

from \$829,000 w/ courtyard lot



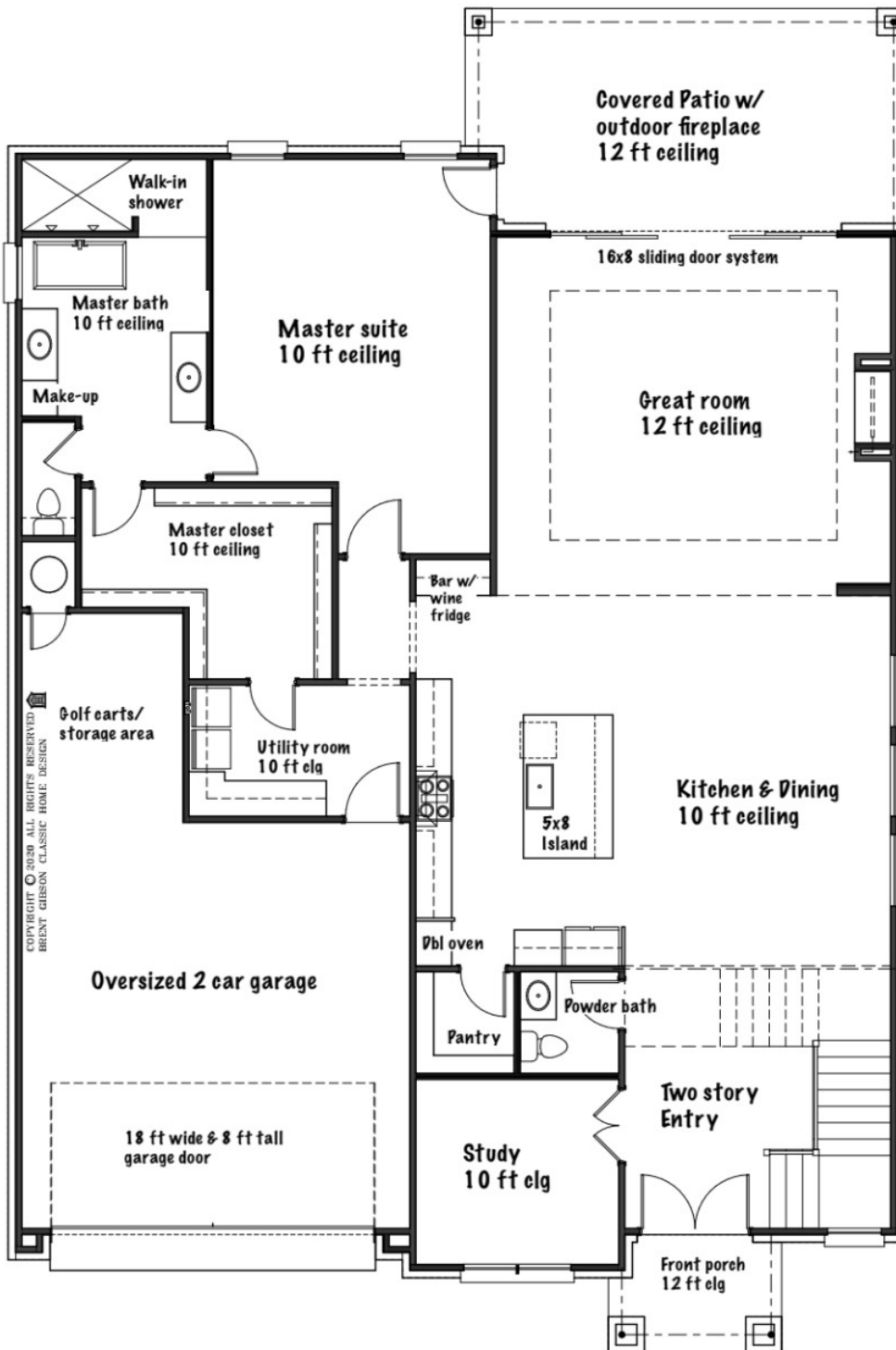






# Sawgrass 3526

## Optional Floorplan Layouts Available



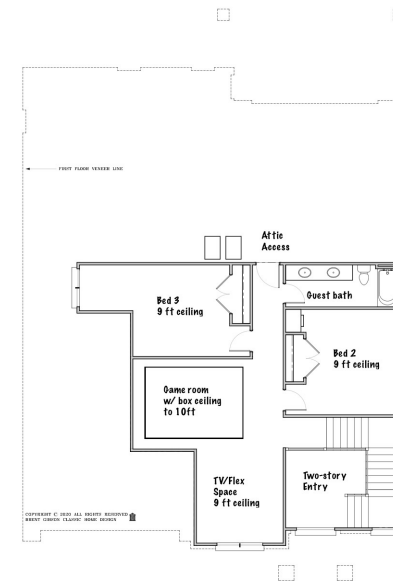
### Options

12' Sliding doors change to 4 windows and a single door

Add upstairs bath for each Bedroom

Upstairs Thestre space to rear of home w/ patio

Expandle first level add larger bar area/storage



**BRENT GIBSON**  
CLASSIC HOME DESIGN

! may reflect structural configuration options that incur additional





Wiregrass

*This is your place.*



H U E L S K A M P

L U X U R Y H O M E S

office@huelskamphomes.com  
(405) 285-0561