

Humanizing education & the world from the inside out

CAPABILITY STATEMENT

Vision

The vision of INNERVATE2EDUCATE is to humanize education & the world from the inside out.

Mission

The mission of INNERVATE2EDUCATE is to deliver profound learning experiences that stimulate the hearts, minds, and spirits of educators, professionals, and leaders to achieve belonging and dignity for all.

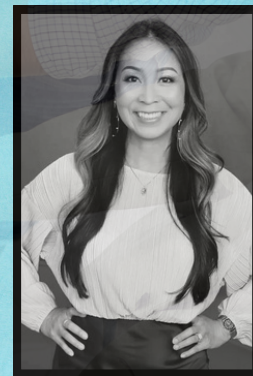
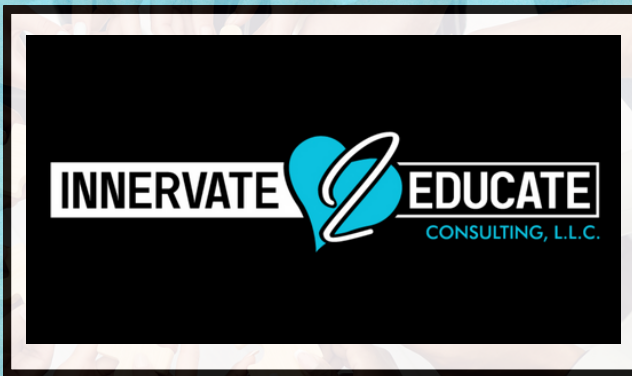
Core Beliefs

- We uplift VULNERABILITY and believe that we can each learn to be brave and look within ourselves.
- We uplift EQUITY and believe that we can each learn to build bridges across lines of difference.
- We uplift SPIRITUALITY and believe that we can each learn to be empathically attuned to one another.

Company Overview

Innervate2Educate Consulting, L.L.C. provides diversity, equity, and inclusion solutions to individuals and organizations in education and extends our reach into businesses across various sectors and of various sizes. Each person, whether an educator, professional, or leader, can develop the capacity to innervate - to stimulate from within in order to transform the world around us. Through customized profound learning experiences that stimulate our hearts, minds, and spirits in a strength-based approach and using an Innervation Framework for Transformation that invites us to innervate with vulnerability, toward equity, and from spirituality, I2E helps participants stride toward individual, interpersonal, and institutional change that will propel any organization forward into thriving and prospering workplaces of belonging and dignity.

INNERVATE - to stimulate toward action; to stimulate from within in order to transform outward



Humanizing education & the world from the inside out

CAPABILITY STATEMENT

SERVICES & SOLUTIONS

I2E uses an Innervation Framework for Transformation to guide educators, professionals, and leaders through a strength-based process that will lead to more expansive mental models and a renewed and reinvigorated commitment to belonging and dignity for all. As part of our commitment to praxis, participants who engage in profound learning experiences will receive actionable tools to turn theory into practice for immediate and ongoing application of newly learned knowledge and skills.

Customized workshops and keynotes/presentations in the following topics are also available:

- Belonging and Dignity through Innervation
- Mental Models for Systems Change
- Cultural Proficiency/Cultural Competency
- Culturally Responsive Leadership
- Microaggressions and Microaffirmations
- Implicit Bias
- Hiring with Equity in Mind
- Building Bridges

DIFFERENTIATORS

- Strength-based, humanizing approach to support DEI efforts and goals
- Innovation lies in the concept of innervation - looking deeply within ourselves to generate change and transform systems
- Emphasis on mental models as the driver of individual, interpersonal, and institutional change and transformation
- Professional development gives way to profound learning which focuses on personal and professional identities and how they influence and are influenced by our interactions and relationships
- Vulnerability, equity, and spirituality as levers for advancing DEI goals

“Thymai introduced each topic with professionalism and care. She allowed time for the participants to discuss and reflect on the concepts shared. I heartily recommend Thymai as an expert in the field, an engaging presenter, and a consummate professional.”

• James Drew, Past-President, Texas Fine Arts Administrators

Contact Info:

Thymai Dong-Sheehan, Ph.D. (tee-my)
Founder/Owner, Chief Innervation Officer

✉ thymai@innervate2educate.com

🌐 www.innervate2educate.com



“We have more possibilities available in each moment than we realize.” - Thích Nhất Hạnh