

Hollen

— INDUSTRIES LTD. —

EST. 2020

 **Canadian Made** 



Hollen Industries is proud to have one of the largest selections of Bins, Totes and Containers. We are even more proud of the fact that we have a very solid line up of Canadian Made Products to offer for use in your business.

These product are of the highest quality and value priced to meet your budget.

As you review this product guide, please remember, we are here to answer any questions or provide you with a quote on these products. We can be reached at

Email: hollenindustries@gmail.com

Phone: 780-974-2700

Thank you for taking time to review these products and we look forward to connecting with you

Stack and Nest Containers:



Features/Benefits:

- Ideal for shipping, distribution and for storage.
- Totes nest when empty.
- Strong, industrial-grade polymer will not rust, corrode, or splinter.
- Long service life resulting in lower replacement costs.
- Manufactured from FDA-approved materials.
- **Standard footprint, containers are cross compatible.**



C18702



AC11037



SN20161200



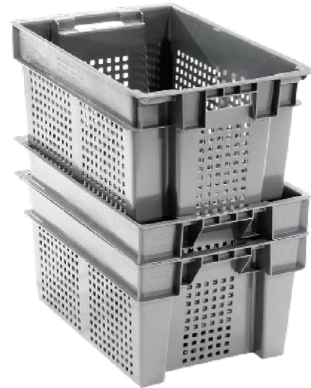
SN21141200

Model Number	Description	Available Colour(s)	Nest and Stack Totes			Nest and Stack Totes			Other Specifications			
			Outside Dimensions (In.)			Inside Dimensions (In.)			Weight (lbs)	Cu. Ft.	Capacity (lbs)	Pallet Quantity
Model Number	Description	Available Colour(s)	Length	Width	Height	Length	Width	Height	Weight (lbs)	Cu. Ft.	Capacity (lbs)	Pallet Quantity
C18702	32" x 18" x 12" Heavy Duty Stack and Nest Container	Blue, Green, Grey	31.63	18.38	12.00	24.81	15.56	10.50	8.60	2.50	125	69
SN20161200	20" x 16" x 12" Heavy Duty Stack and Nest Container	Grey	20.00	16.00	12.00	17.50	11.13	11.13	4.00	1.42	60	132
SN21141200	21" x 14" x 12" Heavy Duty Stack and Nest Container	Grey	21.00	14.00	12.00	17.00	8.00	11.00	4.00	1.23	70	132
AC11037	24" x 16" x 9" Heavy Duty Stack and Nest Container, Vented Sides and Bottom	Orange	23.62	15.75	9.29	18.11	13.39	8.07	3.62	1.31	50	120

Stack and Nest Containers: continued



SN24161200



SN24161222

SN24161600



SN24161622



SN24160822



SN24160800



AC11020

Nest and Stack Totes

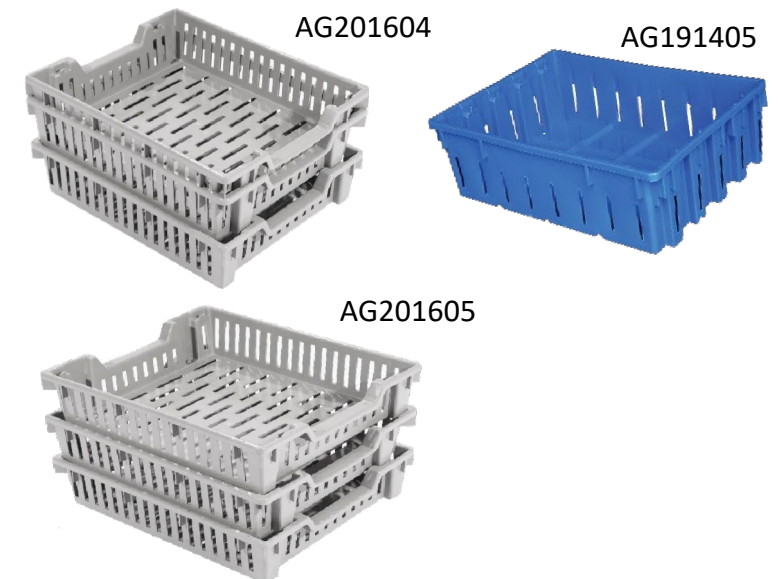
Model Number	Description	Available Colour(s)	Outside Dimensions (In.)			Inside Dimensions (In.)			Other Specifications			
			Length	Width	Height	Length	Width	Height	Weight (lbs)	Cu. Ft.	Capacity (lbs)	Pallet Quantity
AC11020	24" x 16" x 4" Stack and Nest Tote with Holes	Grey	24.00	16.00	4.00	19.50	13.12	3.75	2.20	-	40	270
SN24160800	24" x 16" x 8" Stack and Nest Tote without Holes	Grey	24.00	16.00	8.00	19.50	13.25	7.75	4.00	-	80	150
SN24160822	24" x 16" x 8" Stack and Nest Tote with Holes	Grey	24.00	16.00	8.00	19.50	13.25	7.75	3.20	-	80	150
SN24161200	24" x 16" x 12" Stack and Nest Tote without Holes	Grey	24.00	16.00	12.00	19.50	13.25	11.75	4.80	-	80	115
SN24161222	24" x 16" x 12" Stack and Nest Tote with Holes	Grey	24.00	16.00	12.00	19.50	13.25	11.75	4.40	-	80	115
SN24161600	24" x 16" x 16" Stack and Nest Tote without Holes	Grey	24.00	16.00	16.00	19.50	13.25	15.75	6.60	-	80	80
SN24161622	24" x 16" x 16" Stack and Nest Tote with Holes	Grey	24.00	16.00	16.00	19.50	13.25	15.75	6.10	-	80	80

Stack and Nest Containers: continued



		Nest and Stack Totes										
		Available Colour(s)	Outside Dimensions (In.)			Inside Dimensions (In.)			Other Specifications			
Model Number	Description		Length	Width	Height	Length	Width	Height	Weight (lbs)	Cu. Ft.	Capacity (lbs)	Pallet Quantity
007640	19" x 19" x 10.5" Stack and Nest Tote without Bottom Drain Holes	Lt. Blue	19.00	19.00	10.50	15.38	15.38	10	-	1.41	45	-
007641	19" x 19" x 10.5" Stack and Nest Tote with Bottom Drain Holes	Orange	19.00	19.00	10.50	15.38	15.38	10	-	1.41	45	-
007644	23.5" x 18.5" x 12" Stack and Nest Tote with ventilation	Green	23.50	18.50	12.25	19.13	16.00	11.25	-	2.10	80	-
007648	22" x 14.5" x 14.5" Stack and Nest Tote with Bottom Drain Holes	Beige	22.00	14.50	14.50	17.50	10.06	13.88	-	1.50	60	-

		Nest and Stack Trays										
		Available Colour(s)	Outside Dimensions (In.)			Inside Dimensions (In.)			Other Specifications			
Model Number	Description		Length	Width	Height	Length	Width	Height	Weight (lbs)	Cu. Ft.	Capacity (lbs)	Pallet Quantity
AG191405	19" x 14" x 5" Stack and Nest Tray - Ventilated	Beige Blue	18.75	13.63	4.56	16.50	12.50	4.00	-	0.49	20	-
AG201604	20" x 16" x 4" Stack and Nest Tray - Ventilated	Grey	19.50	16.38	4.19	16.63	14.63	3.50	-	0.51	10	-
AG201605	20" x 16" x 5" Stack and Nest Tray - Ventilated	Grey	19.50	16.38	5.00	16.70	14.64	4.50	-	0.64	10	-



*Other Colors Available with Minimum Order.

Detached and Attached Containers:



Detached Lid Containers:

Features/Benefits:

- Stack firmly with lids.
- Nest when empty.
- interwork for optimum space utilization.
- Detached lids snap tight for secure closure.
- Manufactured from FDA-approved materials.
- CFIA Approved.

		Detached Lid Containers										
		Outside Dimensions (In.)			Inside Dimensions (In.)			Other Specifications				
Model Number	Description	Available Colour(s)	Length	Width	Height	Length	Width	Height	Weight (lbs)	Cu. Ft.	Capacity (lbs)	Pallet Quantity
C18541	24" x 16" x 9" Nest Pack Container	Beige	24.31	16.31	8.75	19.94	12.88	8.25	4.28	1.38	50	210
C18525	24" x 16" x 2" Lid for C18541 Container	Beige	24.38	16.38	1.81	-	-	-	2.25	-	-	392

*Other Colors Available with Minimum Order.

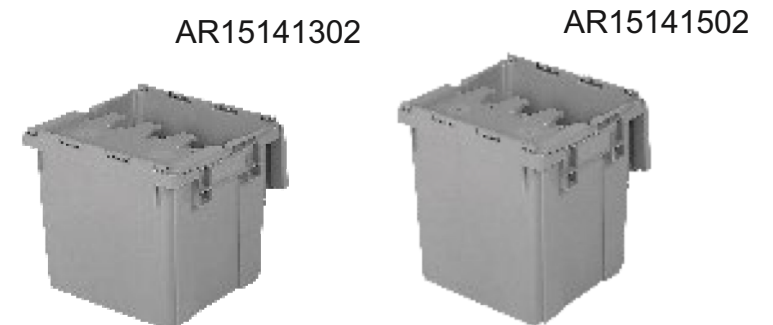


Attached Lid Containers:

Features/Benefits:

- Reusable for shipping, distribution, and storage containers.
- Textured bottoms provide a sure grip on conveyor belts.
- Ergonomic handles designed for easy lifting and carrying.
- Padlock eye on both ends accommodate security ties.
- Reinforced hinge pins for years of smooth lid operation.
- Attached lids snap securely closed to protect contents.
- Containers stack on closed lids and nest when lids are open.
- Custom colors and hot stamping available

		Attached Lid Containers										
		Outside Dimensions (In.)			Inside Dimensions (In.)			Other Specifications				
Model Number	Description	Available Colour(s)	Length	Width	Height	Length	Width	Height	Weight (lbs)	Cu. Ft.	Capacity (lbs)	Pallet Quantity
AR15141302	15" x 14" x 13" Attached Lid Container	Grey	14.75	13.50	13.31	11.25	11.25	11.88	4.98	0.98	50	-
AR15141502	15" x 14" x 15" Attached Lid Container	Grey	14.75	13.50	15.22	11.25	11.25	13.81	5.08	1.12	50	-
AR27170902	27" x 17" x 9" Attached Lid Container	Green	27.06	16.88	9.63	23.88	14.13	8.00	7.52	1.68	80	-



Nesting Containers:



Features/Benefits:

- Ideal for order picking and harvesting.
- Solid or vented sides.
- Made from FDA approved materials.
- Nest when empty for compact storage.
- Will not rust or splinter.

		Nesting Containers											
				Outside Dimensions (In.)			Inside Dimensions (In.)			Other Specifications			
Model Number	Description	Available Color(s)	Length	Width	Height	Length	Width	Height	Weight (lbs)	Cu. Ft.	Capacity (lbs)	Pallet Quantity	
007670	15" Diameter x 13" High Picking Basket with Ventilation	Green	15.00	15.00	13.00	-	-	-	2.00	-	-	568	
007671	15" Diameter x 13" High Picking Basket without Ventilation	Green	15.00	15.00	13.00	-	-	-	2.20	-	-	568	
007678	12" Diameter x 13" High Picking Basket with Ventilation	Red	12.00	12.00	13.00	-	-	-	1.82	-	-	696	

*Other Colors Available with Minimum Order



Nesting General Purpose Containers:

Features/Benefits:

- Ideal for order picking, work in process, or storage.
- Ergonomic handle.
- Will not rust or splinter.
- Nest for compact storage.

		Nesting Containers											
				Outside Dimensions (In.)			Inside Dimensions (In.)			Other Specifications			
Model Number	Description	Available Color(s)	Length	Width	Height	Length	Width	Height	Weight (lbs)	Cu. Ft.	Capacity (lbs)	Pallet Quantity	
075611	21 x 15 x 12 Medium Blue Bin with Drain Holes	Blue	20.75	15.00	12.00	-	-	-	3.65	1.69	40	180	
RC25141401	25 x 17 x 13 Large Blue Bin with Drain Holes	Blue	25.00	17.00	13.00	-	-	-	4.92	2.54	50	140	

*Other Colors Available with Minimum Order

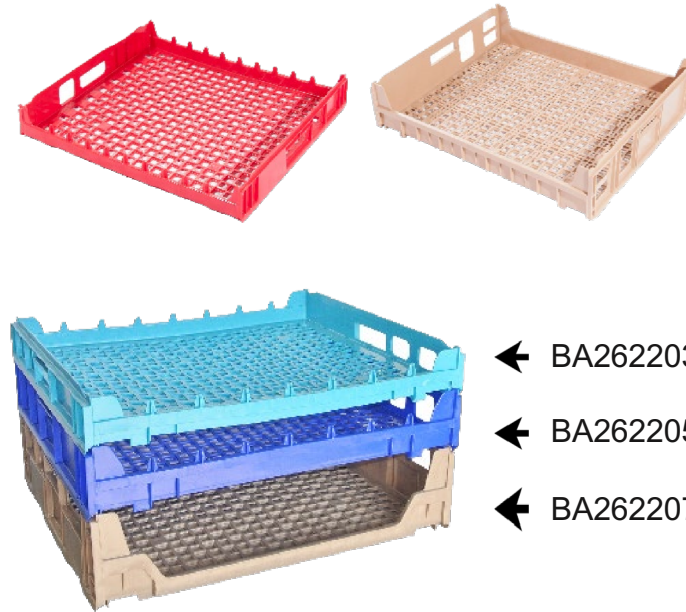


Multi-Purpose Trays:



Features/Benefits:

- Tongue-and-groove design for positive, secure tray stacking.
- Low walls for easy product access.
- Two-way or four-way hand truck entry allows for accessibility and convenient moving and loading.
- Open-grid bottom and open sides allow maximum air flow for product ventilation.
- Stack and nest within footprints to eliminate wasted space and reduce backhaul space.
- Allow full cube of trailers, Reducing transport costs.
- Combine with plastic or steel dollies for easy transport.
- Molded of HDPE; will not corrode or splinter.
- Freezer-safe and 100% recyclable.
- Use with temperatures of -20° to 120° F.
- Customization and identification options available.

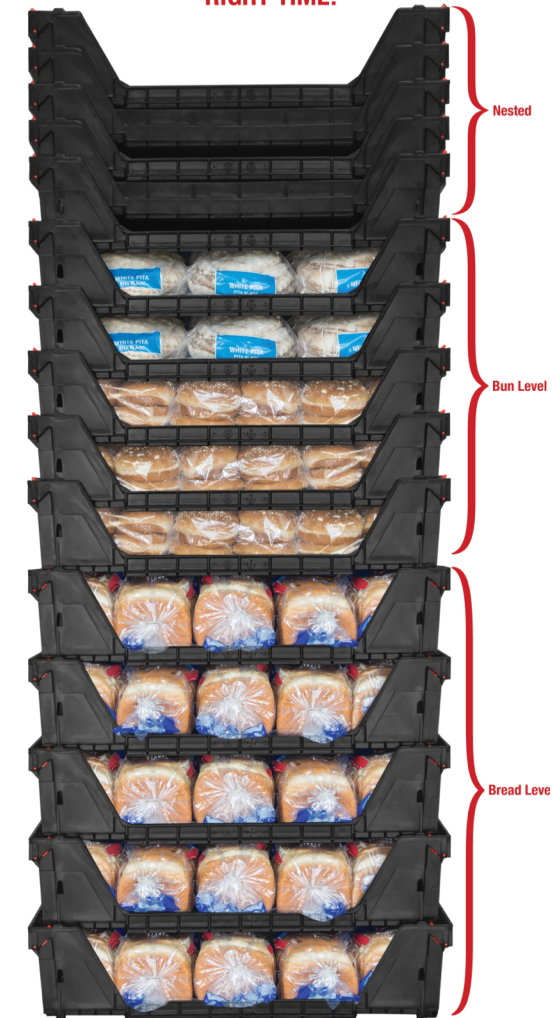


← BA26220322

← BA26220522

← BA26220722

THE RIGHT TRAY AT THE RIGHT PLACE AT THE RIGHT TIME!



BL27230623

BA23200422 BA26220622

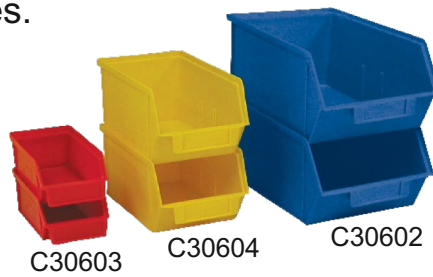
		Multi-purpose Trays											
Model Number	Description	Available Colour(s)	Outside Dimensions (In.)			Inside Dimensions (In.)			Other Specifications				
			Length	Width	Height	Length	Width	Height	Weight (lbs)	Cu. Ft.	Capacity (lbs)	Pallet Quantity	
BA23200422	23" x 20" x 4" Stack and Nest Tray	Grey Red	22.75	20.25	3.63	22.00	19.25	2.88	2.50	-	10	240	
BA26220322 / C19-702	26" x 22" x 3" Stack and Nest Tray	Blue Red	26.75	21.50	3.44	24.75	20.75	2.69	2.67	-	10	84	
BA26220522 / C19-703	26" x 22" x 5" Stack and Nest Tray	Blue	26.75	21.50	4.75	24.75	20.75	3.60	2.75	-	10	84	
BA26220622 / C19-706	26" x 22" x 6" Stack and Nest Tray	Beige	26.50	22.25	5.75	25.75	21.25	5.00	4.13	-	18	70	
BA26220777 / C19-704	26" x 22" x 7" Stack and Nest Tray	Beige	26.75	21.50	6.56	24.75	20.75	5.50	3.50	-	20	74	
BL27230623 / C19-932	27" x 23" x 6" Stack and Nest Tray	Black	27.44	23.44	5.50	24.88	22.50	5.19	5.50	-	20	70	

Hanging and Stacking Bins:



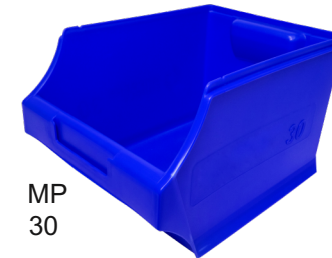
Features/Benefits:

- Superior construction allows for being fully loaded without the risk of bulging or cracking.
- Stack securely to maximize space or hang off panels or rails to meet your storage needs.
- Will not splinter, warp or crack under normal use
- Available in various colors and sizes.
- Tough, durable and easy to clean
- Resistant to oil and grease.



		Hanging and Stacking Bins										
Model Number	Description	Available Colour(s)	Outside Dimensions (In.)			Inside Dimensions (In.)			Other Specifications			
			Length	Width	Height	Length	Width	Height	Weight (lbs)	Cu. Ft.	Capacity (lbs)	Pallet Quantity
C30601	4" x 4" x 2" Hanging and Stacking Bin	Blue, Red, Yellow	4.00	3.88	2.00	3.25	2.31	1.69	0.11	-	5	-
C30602	13" x 8" x 6" Hanging and Stacking Bin	Blue, Red, Yellow	13.31	7.94	6.00	10.50	6.88	5.44	1.25	-	25	-
C30603	7" x 4" x 3" Hanging and Stacking Bin	Blue, Red, Yellow	7.31	3.87	2.88	5.19	3.19	2.38	0.20	-	5	-
C30604	10" x 4" x 3" Hanging and Stacking Bin	Blue, Red, Yellow	9.62	3.67	2.88	7.38	4.88	4.50	0.56	-	10	-

*Other Colors Available with Minimum Order.



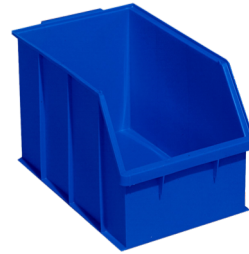
		Hanging and Stacking Bins										
Model Number	Description	Available Colour(s)	Outside Dimensions (In.)			Inside Dimensions (In.)			Other Specifications			
			Length	Width	Height	Length	Width	Height	Weight (lbs)	Cu. Ft.	Capacity (lbs)	Pallet Quantity
MP05	5" x 4" x 2" Hanging and Stacking Bin	Blue, Red, Yellow	4.75	4.00	2.37	-	-	-	2.50	-	5	-
MP10	7" x 4" x 3" Hanging and Stacking Bin	Blue, Red, Yellow	7.00	4.00	3.25	-	-	-	2.67	-	10	-
MP20	9" x 5" x 5" Hanging and Stacking Bin	Blue, Red, Yellow	9.00	5.25	5.00	-	-	-	2.75	-	20	-
MP30	11" x 8" x 7" Hanging and Stacking Bin	Blue, Red, Yellow	11.00	8.00	6.50	-	-	-	3.50	-	30	-
MP40	11" x 16" x 7" Hanging and Stacking Bin	Blue, Red, Yellow	11.00	16.00	6.50	-	-	-	4.13	-	40	-

High Visibility Shelf Bins:



Features/Benefits

- Large hopped front for maximum visibility of contents
- Variety of sizes that work with standard steel and wire shelving, with gravity flow racking, or with deep racking
- Resistant to weak acids, alkalis, water, rust and corrosion proof
- Visible label area for easy identification of contents



030600



030550



030605



AK42121203 with
AK421212DIVIDER

		Shelf Bins										
			Outside Dimensions (In.)			Inside Dimensions (In.)			Other Specifications			
Model Number	Description	Available Colour(s)	Length	Width	Height	Length	Width	Height	Weight (lbs)	Cu. Ft.	Capacity (lbs)	Pallet Quantity
030550	24" x 6" x 6" Shelf Bin	Blue	24.25	6.00	5.75	-	-	-	2.50	-	20	240
030600	18" x 9" x 10" Shelf Bin	Blue	18.00	9.37	10.00	-	-	-	2.67	-	50	84
030605	16" x 16" x 8" Shelf Bin	Blue	16.00	16.00	8.19	14.50	14.50	8.00	2.30	-	50	138
AK42121203	42" x 11.5" x 11.5" Rack Bin	Blue	42.00	11.50	11.50	39.50	10.00	11.25	14.00	-	-	120

*Other Colors Available with Minimum Order.



SB1



SB2



SB3



SB4

		Shelf Bins										
			Outside Dimensions (In.)			Inside Dimensions (In.)			Other Specifications			
Model Number	Description	Available Colour(s)	Length	Width	Height	Length	Width	Height	Weight (lbs)	Cu. Ft.	Capacity (lbs)	Pallet Quantity
SB1	12" x 5" x 4" Shelf Bin	Blue, Red, Yellow	12.25	4.50	4.00	10.25	3.00	4.00	0.38	-	-	1728
SB2	12" x 7" x 4" Shelf Bin	Blue, Red, Yellow	12.25	6.50	4.00	10.25	5.50	4.00	0.51	-	-	1080
SB3	18" x 5" x 4" Shelf Bin	Blue, Red, Yellow	18.25	4.50	4.00	16.50	3.00	4.00	0.58	-	-	960
SB4	18" x 7" x 4" Shelf Bin	Blue, Red, Yellow	18.25	6.50	4.00	16.50	5.50	4.00	0.68	-	-	720

*Other Colors Available with Minimum Order.