

# Introduction to Hollen Industries Specialty Lines



# Hollen Industries Specialty Products

Hollen Industries is proud to introduce our line of specialty products to you. We have additional products that can be seen in our [product categories online](#), but we wanted to highlight some of the distinctive products we have to assist you in making your projects better.

We are confident that all our products are of the highest quality and are value-priced to meet your budget.

To request a quote, contact Hollen Industries today.

Email: [hollenindustries@gmail.com](mailto:hollenindustries@gmail.com)

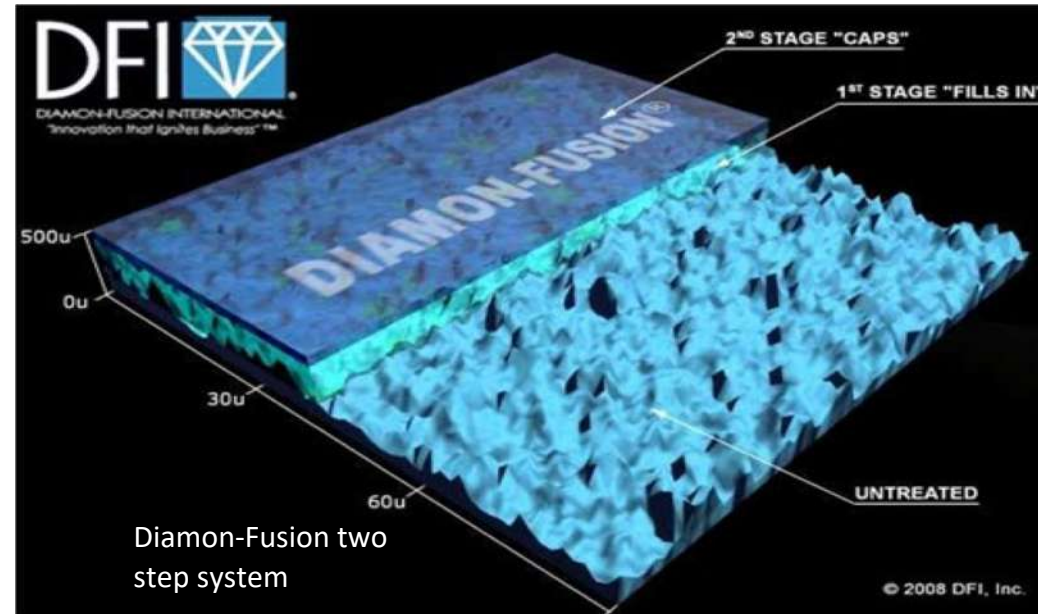
Call: 780-974-2700

We look forward to connecting with you on how Hollen Industries can meet your product needs, on time and on budget!



# Diamon-Fusion

Diamon-Fusion products are a family of patented one and two-step hydrophobic protective coatings for glass, Stainless Steel and other silica based surfaces which enhances the performance of the surface it is applied to.



Learn more at  
[www.dfisolutions.com](http://www.dfisolutions.com)

Diamon-Fusion was established in 1997. Currently Diamon-Fusion has been patented or has patents pending in 120 countries around the world

# Glass Enhancement

Hollen Industries is proud and excited to offer our Glass Enhancement product along with our Glass and Stainless-steel maintenance program.



Our Glass Enhancement Product known as Diamon-Fusion is designed to be used on any glass or silica-based substrate. However, we believe that it is best suited for three main areas of any building:

- Hard to Clean areas as it will reduce cleaning cycles
- Areas with high touch or exposure to either people or environment
- Areas that need antibacterial and mold resistance.



# Glass and Stainless-Steel Maintenance Products

Hollen Industries Ltd Glass and Stainless-steel Maintenance program is made up of unique products which change the way you maintain your property.

## **Stainless-Steel Defender**

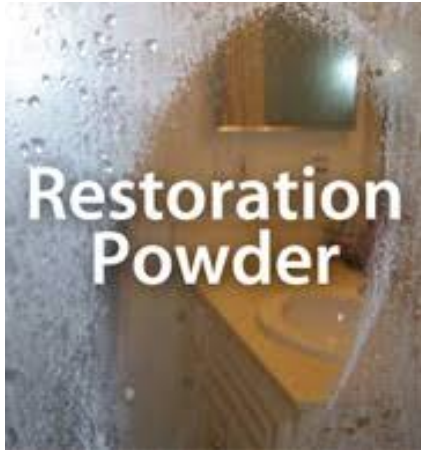
DFI Stainless Defender is our Stainless-Steel protectant. Once applied the product goes to work and assists in reducing cleaning time. Enhancing the stainless-steels appearance and eliminates the need for harsh cleaning agents or expensive polishes.

## **DFI Clear Fusion Pro**

This product, like its big sister, offers many of the same benefits but in a one step process. The product is ideal for a wide range of silica-based products like Mirrors, Glass Tables, Porcelain Sinks, Toilets, Granite Countertops, Food Guards just to name some areas.



# Glass and Stainless-Steel Maintenance Products



## **Glass Rescue and Restoration Powder**

These two cleaning agents represent the ability to clean most silica-based product. The easiest way to describe them is that the Restoration Powder is the light duty cleaner and the Glass Rescue is the Heavy duty cleaner. These products allow you to restore rather than replace water stained, degraded silica surfaces and once brought back to “like new, can be protected” huge saving cost savings over replacement

## **DFI Revitalizer**

Hollen Industries also provides you with the DFI Revitalizer. This product works to support all Diamond fusion products. This product allows you to monitor the performance of their other products and if any should be not performing to there highest capacity then this product is designed to help restore the full capacity of the product it is used with.

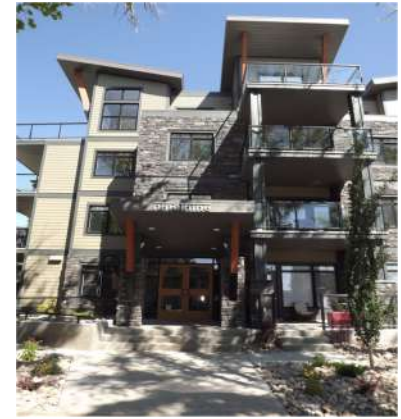


# Benefits of Diamon-Fusion

Diamon-Fusion Products give a full breath of enhancements, savings and environmental stewardship.

## Savings

- Reduced cleaning cycles
- Reduced labour cost as makes cleaning easier and faster
- Reduce the need for harsh and expensive cleaning products



## Enhancements

- Enhances brilliance of glass by 20%
- Increases deflection strength up to 10 times
- Extension of product life by reducing chances of staining, discolouration and degrading
- Graffiti proofs your glass product
- Provides an antibacterial surface



## Environmental Stewardship

- LEED Certified points for new commercial construction
- Reduces use of harmful cleaning chemicals
- Reduce use of water (less cleaning cycles)

# Vintage View

Vintage View is the leader in contemporary, wall mounted wine rack design and manufacturing. They don't just make great product that wine-centric customers seek. They pride themselves in providing world-class fulfillment, service for the best wine cellar companies in North American and beyond. Hollen Industries by teaming with Vintage View, can provide you the builder the option of including amazing wine storage in your home or commercial builds.



For commercial builders Wine is a critical element to the dining experience, an ROI-focused decor upgrade that is becoming increasingly showcased in beautiful commercial properties around the globe. Vintage View has worked with some of the top restaurants, hotels, and retail locations in Miami, New York, San Francisco, Chicago and all points in between to create stunning visual wine displays that leave guests and customers in awe — and drive interaction (more sales) with restaurant wine lists and professionals. Combined with the customer support focus of Hollen Industries , you also can provide your client with the same awe inspiring results



# Vintage View

Vintage View brings a strong selection of different wine display systems to your project ensuring you have the right system for your client



The Vino Series is our artistic, minimalist approach to bottle storage. Start with one bottle and let the interior designer in you run loose.

Our label-forward Vino Pins and cork-first Rails are single-bottle metal wine racks that allow you to break from linear wine racking to invent artistic expressions that hold one bottle or thousands.



The W Series is our patented wall mounted wine rack that features the original label-forward design trusted by interior design and building professionals. This metal wine rack started the modern wine storage movement with a contemporary style unknown to the industry prior.

Perfect for any size room — residential or commercial. The W Series collection is completely modular to scale with a wine collection of any size, starting at just a few bottle



The hyper modern Wine Towers of the Evolution line continues our legacy of creating contemporary ways to display wine collections, label forward. This collection combines steel rods with acrylic supports for a truly innovative design, look and feel.

Lightweight and easy to assemble, Wine Towers fit into with any residential room, restaurant or retail floor design. Its transparent sides allow for creative additions of LED lighting. Expand with extension kits or explore our customizable options.

# Vintage View

Need More inspiration check out Vintage View at <https://vintageview.com/>



The Evolution Wine Wall collection offers a unique approach to label-forward wall mounted wine rack storage. Available in a variety of stackable heights, three bottle depths, and a standard 3-bottle wide configuration, the Wine Wall can scale to any project requirement. Plus units can link together (sharing a support) to expand to any project requirement and the racks are spaced to hold magnum, Champagne, and standard wine bottle sizes.



The Case & Crate collection brings design sensibility (and Vintage View's renowned modularity) to bulk wine storage. The secure Lockers and open Bins of this lineup can store bottles by the case load and integrate perfectly with label-forward wine racking displays.



The Island Display Rack series takes the best of our label-forward design, building it into great looking, freestanding wine displays. Your customers will love how easy it is to visually shop for their favorite labels without having to dig through bins or cork-forward racks to find the bottles they'll take home that day.

# Vintage View Advantage

The Hollen Industries/Vintage View Advantage are simple

- ❑ Local single point support through Hollen Industries Ltd
- ❑ Full project design support
- ❑ Quality North American made Products
- ❑ Strong Website support for information and resources
- ❑ Industry leading and trending styles and systems
- ❑ Easy access to product ordering with limited to no Headaches



# Edgewood Matting

Hollen Industries through Edgewood provides high quality matting and athletic and sports flooring solutions.

With full lines of commercial entrance matting, industrial matting and safety matting, Hollen Industries has the right matting solution for you or your client.

As for our Athletic and sports flooring we can assist you from planning to completion. Providing top quality product choices to the coverings needed to protect that investment.

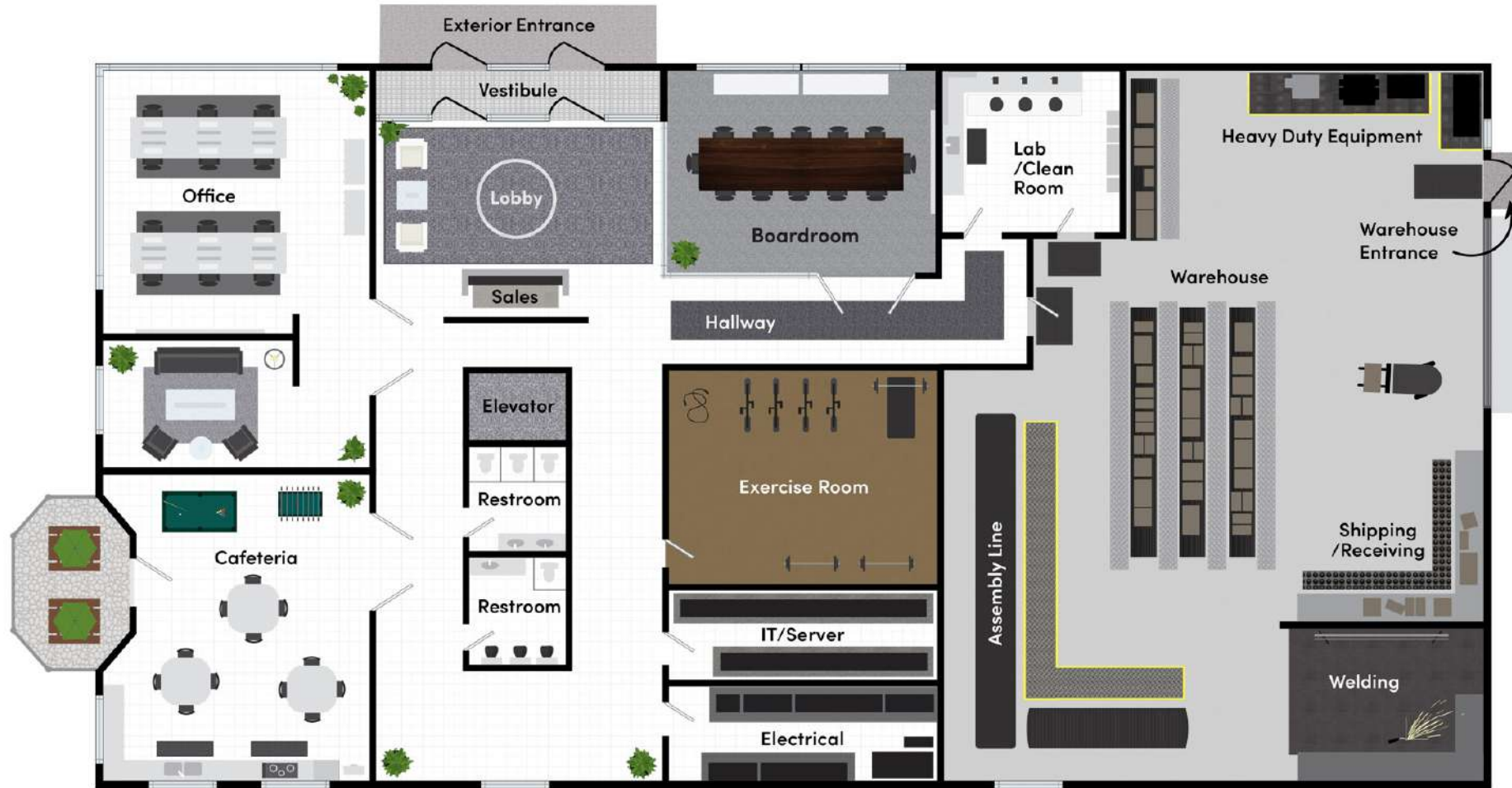
Talk with Hollen Industries today to determine what the right product is for your installation.



Custom Matting is one of our specialties



# Edgewood Matting



From front to back door, and any space in-between;  
at Hollen Industries we know we can cover your needs

# For More Information

**Contact:**

**Allen Palmer**

**Hollen Industries Ltd**

**Phone: 780-974-2700**

**Email: [hollenindustries@gmail.com](mailto:hollenindustries@gmail.com)**



Hollen Industries Ltd is Alberta's newest single point supply center. Hollen Industries was born out of the understanding that companies need the ability to work with product experts in order to best meet their needs and budgets. Each purchase they make is an investment in their business and subsequent success. Though established in 2020, its management has been in the supply industry for over 20 years; both as a supplier and a consumer. While leading one of Canada's top supply companies, it became apparent that it wasn't enough to be a distributor, but one needed to be a dedicated and educated provider. It is important to know and understand the right product to meet businesses growing demands. This understanding is what makes Hollen Industries different from other competitors.



Hollen Industries offers products lines that are distinct in the market, meeting a wide range of needs for the everyday business. Products that will assist you in developing and maintaining your business to the highest standards.