



Ace Roto-Mold

A DIVISION OF DEN HARTOG INDUSTRIES, INC.



Den Hartog
INDUSTRIES, INC.

BLOW MOLDING
INJECTION MOLDING
ROTATIONAL MOLDING
METAL FABRICATION



“ALWAYS AT YOUR SERVICE”

Since 1976, Den Hartog Industries has been committed to providing quality products and innovative, industry-leading service solutions with integrity.

Den Hartog Industries, Inc. features four manufacturing divisions:

ACE ROTO-MOLD ROTATIONAL MOLDING

Ace Roto-Mold tanks and marine products are well-known for high quality, rotationally molded products and accessories. Ace Roto-Mold is a leader in the industrial and agricultural container markets, the marine industry and custom molding.

INJECTION MOLDING

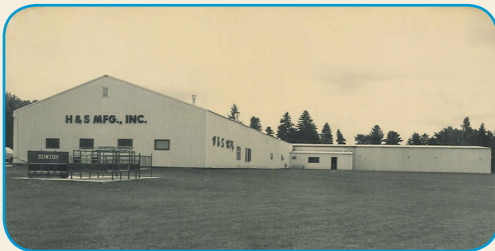
The Injection Division has the ability to take your project from concept to reality with complete, in-house services such as packaging, printing and assembly.

BLOW MOLDING

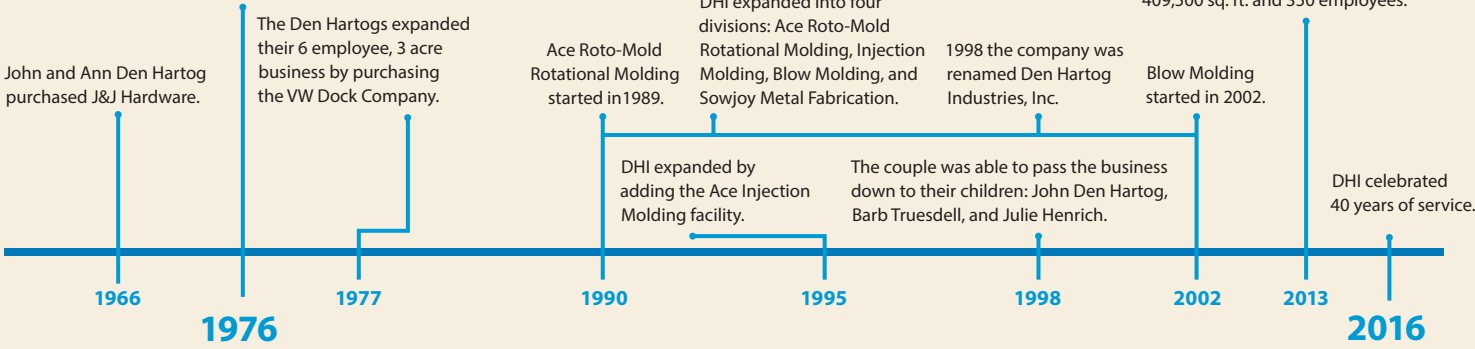
The Blow Molding Division can efficiently produce high quality products at a low part cost. This method of molding can produce large volumes of detailed plastic parts.

SOWJOY METAL FABRICATION

A wide range of capabilities allows the Sowjoy division to produce various custom projects. Known for its line of hog confinement systems, this division also provides mold fabrication and repair for Ace Roto-Mold.



The Den Hartogs purchased H&S Manufacturing.



TRANSPORTATION

Manufacturing high-quality tanks for industrial and agricultural needs is just part of the job. Den Hartog Industries delivers – literally. Our company-owned and operated fleet will deliver your order promptly and conveniently to your business or work site. Our custom fleet of trucks and trailers reduces transportation costs while increasing responsiveness and convenience to our customers. The Den Hartog transportation service is one more way we live up to our motto, “Always At Your Service.”

APPLICATION GUIDELINES

A booklet containing additional information on tank selection and application, chemical resistance, materials information, tank drawings, handling, installation and use guidelines, fitting installation guidelines, and general customer information is available upon request. Application Guidelines are also available online at www.denhartogindustries.com/application-guidelines.

CHEMICAL COMPATIBILITY

Always verify your chemical compatibility with tanks, fittings, and gaskets. Consult your chemical manufacturer regarding applications.



Ace Roto-Mold

A DIVISION OF DEN HARTOG INDUSTRIES, INC.

| | |
|--|--------------|
| Vertical, Water Only & Gusseted Tanks | 4-5 |
| Vertical & Cone Bottom Batch Tanks, Stands & Lids | 6 |
| Cone Bottom Tanks & Stands | 7-8 |
| Inductor Tanks & Stands | 9 |
| Free Standing Horizontal Tanks | 10-11 |
| Hoops, Baffles & Skids | 12-13 |
| Powder-Coated Steel Bands, Round Horizontal Tanks & Cradles | 14 |
| Elliptical Tanks & Cradles | 15 |
| Containment Tanks | 16 |
| Dualline™ Double Wall Tanks | 17 |
| Specialty Tanks & Bands | 18-19 |
| Spot Sprayers, PCO Tanks & Powder-Coated Steel Bands | 20 |
| Fuel Tanks, Stock Tanks & Pick Up Tanks | 21 |
| Crop Care Tanks & Hoops | 22 |
| Tractor Mounted Tanks | 23 |
| Pallet Paks & Stackable Totes | 24 |
| Cisterns & Aquifer Low Profile Cisterns | 25 |
| Septic Tanks & Septic/Cistern Accessories | 26 |
| Low Profile Septic Tanks, Accessories & Kits | 27 |
| Feed Carts, Utility Carts, Liquid Feeders & Mineral Feeders | 28 |
| Lids & Strainer Baskets | 29 |
| Fittings, Spinwelds & Accessory Clips | 30 |
| New Products | 31 |

Den Hartog Industries, Inc

4010 HOSPERS DRIVE SOUTH | PO BOX 425 | HOSPERS, IA 51238-0425

Customer Service/Sales Support: sales@denhartogindustries.com

712.752.8432 | 800.342.3408 | Fax: 712.752.8222

www.denhartogindustries.com

Vertical Tanks are free standing with a flat bottom for indoor or outdoor installations. Tanks are manufactured from medium- or high-density polyethylene with UV inhibitors. Ace Roto-Mold Vertical Tanks conform to the requirements of NSF/ANSI Standard 61. Tank walls are translucent for level viewing and equipped with gallon indicators. Please consult factory regarding approved colors.

VERTICAL TANKS - DOME TOP

Syphon tube included with tanks 300 gallon or greater
Additional water only tanks available



| PART NUMBER | CAPACITY | WEIGHT | DIMENSIONS (DIA X HEIGHT) | LID | FITTING | SPECIFIC GRAVITY |
|---------------|------------|--------|------------------------------|-----|---------|------------------|
| VT0010-12† | 10 GAL | 9 | 12 X 25 | 8" | 3/4" | 2.0 |
| VT0020-16† | 20 GAL | 15 | 16 X 28 | 8" | 3/4" | 2.0 |
| VT0025-18† | 25 GAL | 14 | 18 X 30 | 5" | 3/4" | 2.0 |
| VT0040-18† | 40 GAL | 19 | 18 X 43 | 5" | 3/4" | 2.0 |
| VT0055-20† | 55 GAL | 23 | 20 X 47 | 5" | 1" | 2.0 |
| VT0065-23† | 65 GAL | 27 | 23 X 42 | 5" | 1" | 2.0 |
| VT0110-32 | 110 GAL | 42 | 32 X 41 | 5" | 2" TOP | 2.0 |
| VT0135-23 | 135 GAL | 47 | 23 X 82 | 16" | 1" | 2.0 |
| VT0300-42 | 300 GAL | 74 | 42 X 55 | 8" | 2" | 2.0 |
| VT0405-52 | 405 GAL | 92 | 52 X 48 | 8" | 2" | 2.0 |
| VT0425-42 | 425 GAL | 102 | 42 X 75 | 8" | 2" | 2.0 |
| VT0505-46 | 505 GAL | 120 | 46 X 80 | 16" | 2" | 2.0 |
| VT0550-52 | 550 GAL | 118 | 52 X 66 | 8" | 2" | 2.0 |
| VT0600-46 | 600 GAL | 132 | 46 X 91 | 16" | 2" | 2.0 |
| VT0625-64 | 625 GAL | 102 | 64 X 50 | 8" | 2" | 2.0 |
| VT0800-46 | 800 GAL | 177 | 46 X 118 | 16" | 2" | 1.7 |
| VT0900-46 | 900 GAL | 222 | 46 X 132 | 16" | 2" | 1.7 |
| VT1000-64 | 1000 GAL | 252 | 64 X 81 | 16" | 2" | 1.7 |
| VT1050-86 | 1050 GAL | 192 | 86 X 54 | 16" | 2" | 1.7 |
| VT1200-64 | 1200 GAL | 277 | 64 X 97 | 16" | 2" | 1.7 |
| VT1350-86 | 1350 GAL | 230 | 86 X 65 | 16" | 2" | 1.7 |
| VT1500-64 | 1500 GAL | 337 | 64 X 115 | 16" | 2" | 1.7 |
| VT1500-86 | 1500 GAL | 252 | 86 X 69 | 16" | 2" | 1.7 |
| VT1525-64 | 1525 GAL | 352 | 64 X 122 | 16" | 2" | 1.7 |
| VT1650-86 | 1650 GAL | 280 | 86 X 74 | 16" | 2" | 1.7 |
| VT2000-64 | 2000 GAL | 467 | 64 X 156 | 16" | 2" | 1.7 |
| VT2000-90 | 2000 GAL | 377 | 91 X 84 | 16" | 2" | 1.7 |
| VT2050-86 | 2050 GAL | 402 | 86 X 93 | 16" | 2" | 1.7 |
| VT2150-102 | 2150 GAL | 417 | 102 X 71 | 16" | 2" | 1.7 |
| VT2500-90 | 2500 GAL | 422 | 91 X 103 | 16" | 2" | 1.7 |
| NEW VT2500-96 | 2500 GAL | 445 | 96 X 92 | 16" | 2" | 1.7 |
| VT3000-90 | 3000 GAL | 552 | 91 X 120 | 16" | 2" | 1.7 |
| NEW VT3000-96 | 3000 GAL | 582 | 96 X 109 | 16" | 2" | 1.7 |
| VT3100-102* | 3100 GAL | 552 | 102 X 103 | 16" | 2" | 1.7 |
| VT3400-102* | 3400 GAL | 587 | 102 X 107 | 16" | 2" | 1.7 |
| VT4000-96* | 4000 GAL | 902 | 96 X 140 | 16" | 2" | 1.7 |
| VT4200-96* | 4200 GAL | 952 | 96 X 148 | 16" | 2" | 1.7 |
| VT4995-142* | 4995 GAL | 952 | 142 X 90 | 16" | 3" | 1.7 |
| VT5000-102* | 5000 GAL | 1302 | 102 X 156 | 16" | 3" | 1.7 |
| VT5150-102* | 5150 GAL | 1352 | 102 X 161 | 16" | 3" | 1.7 |
| VT6250-102* | 6250 GAL | 1552 | 102 X 194 | 16" | 3" | 1.7 |
| VT6500-120* | 6500 GAL | 1502 | 120 X 152 | 16" | 3" | 1.7 |
| VT7000-142* | 7000 GAL | 1752 | 142 X 125 | 16" | 3" | 1.7 |
| VT7800-120* | 7800 GAL | 1902 | 120 X 176 | 16" | 3" | 1.7 |
| VT8000-120* | 8000 GAL | 1932 | 120 X 180 | 16" | 3" | 1.7 |
| VT9000-142* | 9000 GAL | 2002 | 142 X 154 | 16" | 3" | 1.7 |
| VT9150-120* | 9150 GAL | 2202 | 120 X 203 | 16" | 3" | 1.7 |
| VT9500-120* | 9500 GAL | 2352 | 120 X 213 | 16" | 3" | 1.7 |
| VT10500-2500* | 10,500 GAL | 2502 | 142 X 177 | 16" | 3" | 1.6 |
| VT10500-2800* | 10,500 GAL | 2802 | 142 X 177 | 16" | 3" | 1.8 |
| VT12500-142* | 12,500 GAL | 3402 | 142 X 208 | 16" | 3" | 1.7 |
| VT15500-142* | 15,500 GAL | 4002 | 142 X 247 | 16" | 3" | 1.7 |

† INDICATES CAN BE SHIPPED VIA UPS/FED EX * HEAVY DUTY FITTING



Warning: Cancer and Reproductive Harm.
www.P65Warnings.ca.gov

VT15500-142

VERTICAL TANKS - FLAT TOP

Featuring additional flats for fitting installation or mounting

| PART NUMBER | CAPACITY | WEIGHT | DIMENSIONS (DIA X HEIGHT) | LID | FITTINGS | SPECIFIC GRAVITY |
|-------------|----------|--------|---------------------------|-----|----------|------------------|
| VT0075-23† | 75 GAL | 30 | 23 X 50 | 7" | 1" | 2.0 |
| VT0100-28† | 100 GAL | 38 | 28 X 45 | 7" | 1" | 2.0 |
| VT0105-23† | 105 GAL | 40 | 23 X 65 | 7" | 1" | 2.0 |
| VT0130-32 | 130 GAL | 47 | 32 X 46 | 8" | 1" | 2.0 |
| VT0135-28 | 135 GAL | 47 | 28 X 59 | 8" | 1" | 2.0 |
| VT0160-28 | 160 GAL | 58 | 28 X 68 | 8" | 1" | 2.0 |
| VT0175-31 | 175 GAL | 56 | 31 X 61 | 8" | 1 1/2" | 2.0 |
| VT0180-40 | 180 GAL | 50 | 40 X 45 | 5" | 2" TOP | 2.0 |
| VT0210-40 | 210 GAL | 58 | 40 X 49 | 5" | 2" TOP | 2.0 |
| VT0225-31 | 225 GAL | 67 | 31 X 76 | 8" | 1 1/2" | 2.0 |
| VT0265-31 | 265 GAL | 76 | 31 X 88 | 8" | 1 1/2" | 2.0 |
| VT0295-42 | 295 GAL | 74 | 42 X 55 | 16" | 2" | 2.0 |
| VT0300-35 | 300 GAL | 88 | 35 X 81 | 8" | 2" | 2.0 |
| VT0420-42 | 420 GAL | 102 | 42 X 75 | 16" | 2" | 2.0 |
| VT0500-46 | 500 GAL | 120 | 46 X 77 | 8" | 2" | 2.0 |
| VT0850-54 | 850 GAL | 184 | 54 X 94 | 8" | 2" | 1.7 |



VT0265-31



VT0850-54

† INDICATES CAN BE SHIPPED VIA UPS/FED EX

VERTICAL STANDS

| PART NUMBER | DESCRIPTION | WEIGHT | DIMENSIONS (DIA X HEIGHT) |
|--------------|----------------------------|--------|---------------------------|
| VT28/31-STP† | 31-1/2" POLY STAND | 35 | 39 X 24 |
| VT-ST052 | 52" POLY STAND | 165 | 52 X 36 |
| VT-ST052FF | 52" FOAM FILLED POLY STAND | 201 | 52 X 36 |
| VT160-28ST | 160 GAL METAL STAND | 83 | 30 X 26 |
| VT265-31ST | 265 GAL METAL STAND | 89 | 33 X 26 |
| VT300-35ST | 300 GAL METAL STAND | 114 | 37 X 38 |



VT300-35ST

† INDICATES CAN BE SHIPPED VIA UPS/FED EX

GUSSETED TANKS

Gusseted Top Vertical Tanks are free standing with a flat bottom for indoor or outdoor installations. Tanks are manufactured from medium-density polyethylene with UV inhibitors and designed for containment of liquids. Tank walls are translucent for level viewing and equipped with gallon indicators.



GV7000-142

| PART NUMBER | CAPACITY | WEIGHT | DIMENSIONS (DIA X HEIGHT) | LID | FITTINGS | SPECIFIC GRAVITY |
|--------------|-----------|--------|---------------------------|-----|----------|------------------|
| GV1050-86 | 1050 GAL | 177 | 86 X 50 | 16" | 2" | 1.5 |
| GV1350-86 | 1350 GAL | 209 | 86 X 62 | 16" | 2" | 1.5 |
| GV1500-86 | 1500 GAL | 230 | 86 X 69 | 16" | 2" | 1.5 |
| GV1650-86 | 1650 GAL | 257 | 86 X 74 | 16" | 2" | 1.5 |
| GV4995-142 | 4995 GAL | 952 | 142 X 97 | 16" | 3" | 1.7 |
| GV7000-142 | 7000 GAL | 1752 | 142 X 127 | 16" | 3" | 1.7 |
| GV10500-2500 | 10500 GAL | 2502 | 142 X 179 | 16" | 3" | 1.5 |
| GV10500-2800 | 10500 GAL | 2802 | 142 X 179 | 16" | 3" | 1.7 |
| GV12500-142 | 12500 GAL | 3402 | 142 X 208 | 16" | 3" | 1.7 |
| GV15500-142 | 15500 GAL | 4002 | 142 X 253 | 16" | 3" | 1.7 |

WATER ONLY TANKS

Additional water only tanks available

Water Only Vertical Tanks are free standing for indoor or outdoor stationary applications. Tanks are manufactured from FDA compliant high-density polyethylene with UV inhibitors. Available in dark green or black.

| PART NUMBER | CAPACITY | WEIGHT | DIMENSIONS (DIA X HEIGHT) | LID | FITTINGS | SPECIFIC GRAVITY |
|-------------|----------|--------|---------------------------|-----|----------|------------------|
| WO2500-VT | 2500 GAL | 392 | 96 X 92 | 16" | 2" | 1.0 |
| WO3000-VT | 3000 GAL | 487 | 96 X 109 | 16" | 2" | 1.0 |



WO2500-VT



WO3000-VT

Batch Tanks are designed for indoor applications. The tanks support many features including vertical, open top vertical, cone bottom, as well as open top cone bottom options. All tanks feature 8" lids and one standard fitting. A hinged lid option is also available on the open top styles. Both polyethylene and metal stands designed for all styles make these tanks very versatile. Tanks are manufactured from medium-density polyethylene with UV inhibitors and are designed for the containment of liquids up to 2.0 specific gravity. Tank walls are translucent for level viewing and equipped with liter and gallon indicators.

VT0200-36



CB0200-36



OC0200-36

OC036-STP
(WITH ADAPTOR)

VERTICAL BATCH TANKS

| PART NUMBER | CAPACITY | WEIGHT | DIMENSIONS (DIA X HEIGHT) | LID | FITTINGS | SPECIFIC GRAVITY |
|-------------|----------|--------|---------------------------|-----|----------|------------------|
| VT0055-23† | 55 GAL | 26 | 23 X 38 | 8" | 1" | 2.0 |
| VT0100-23 | 100 GAL | 36 | 23 X 64 | 8" | 1" | 2.0 |
| VT0145-36 | 145 GAL | 52 | 36 X 40 | 8" | 1" | 2.0 |
| VT0200-36 | 200 GAL | 58 | 36 X 53 | 8" | 1 1/2" | 2.0 |
| VT0250-36 | 250 GAL | 76 | 36 X 62 | 8" | 1 1/2" | 2.0 |
| VT0325-36 | 325 GAL | 92 | 36 X 81 | 8" | 2" | 2.0 |

† INDICATES CAN BE SHIPPED VIA UPS/FED EX

VERTICAL BATCH TANKS - OPEN TOP

All tanks come with bolt-on top

| PART NUMBER | CAPACITY | WEIGHT | DIMENSIONS (DIA X HEIGHT) | LID | FITTINGS | SPECIFIC GRAVITY |
|-------------|----------|--------|---------------------------|-----|----------|------------------|
| OP0055-23† | 55 GAL | 26 | 23 X 36 | 8" | 1" | 2.0 |
| OP0100-23 | 100 GAL | 36 | 23 X 62 | 8" | 1" | 2.0 |
| OP0145-36 | 145 GAL | 52 | 36 X 39 | 8" | 1" | 2.0 |
| OP0200-36 | 200 GAL | 58 | 36 X 51 | 8" | 1 1/2" | 2.0 |
| OP0250-36 | 250 GAL | 76 | 36 X 61 | 8" | 1 1/2" | 2.0 |
| OP0325-36 | 325 GAL | 92 | 36 X 80 | 8" | 2" | 2.0 |

† INDICATES CAN BE SHIPPED VIA UPS/FED EX

CONE BOTTOM BATCH TANKS

| PART NUMBER | CAPACITY | WEIGHT | DIMENSIONS (DIA X HEIGHT) | LID | FITTINGS | SPECIFIC GRAVITY |
|-------------|---------------|--------|---------------------------|-----|----------|------------------|
| CB0055-23† | 55 GAL - 15° | 26 | 23 X 39 | 8" | 1 1/2" | 2.0 |
| CB0100-23 | 100 GAL - 15° | 36 | 23 X 65 | 8" | 1 1/2" | 2.0 |
| CB0145-36 | 145 GAL - 15° | 52 | 36 X 43 | 8" | 2" | 2.0 |
| CB0200-36 | 200 GAL - 15° | 58 | 36 X 55 | 8" | 2" | 2.0 |
| CB0250-36 | 250 GAL - 15° | 76 | 36 X 67 | 8" | 2" | 2.0 |
| CB0325-36 | 325 GAL - 15° | 92 | 36 X 84 | 8" | 2" | 2.0 |

STAND IS REQUIRED

† INDICATES CAN BE SHIPPED VIA UPS/FED EX

CONE BOTTOM BATCH TANKS - OPEN TOP

All tanks come with bolt-on top

| PART NUMBER | CAPACITY | WEIGHT | DIMENSIONS (DIA X HEIGHT) | LID | FITTINGS | SPECIFIC GRAVITY |
|-------------|---------------|--------|---------------------------|-----|----------|------------------|
| OC0055-23† | 55 GAL - 15° | 26 | 23 X 37 | 8" | 1 1/2" | 2.0 |
| OC0100-23 | 100 GAL - 15° | 36 | 23 X 63 | 8" | 1 1/2" | 2.0 |
| OC0145-36 | 145 GAL - 15° | 52 | 36 X 41 | 8" | 2" | 2.0 |
| OC0200-36 | 200 GAL - 15° | 58 | 36 X 53 | 8" | 2" | 2.0 |
| OC0250-36 | 250 GAL - 15° | 76 | 36 X 65 | 8" | 2" | 2.0 |
| OC0325-36 | 325 GAL - 15° | 92 | 36 X 82 | 8" | 2" | 2.0 |

STAND IS REQUIRED

† INDICATES CAN BE SHIPPED VIA UPS/FED EX

BATCH TANK LIDS & STANDS

| PART NUMBER | DESCRIPTION | WEIGHT |
|-------------|---------------------------------|--------|
| 19502 | 23" HINGED LID | 8 |
| 19505 | 36" HINGED LID | 14 |
| OC023-STP | 23" POLY CONE BOTTOM STAND | 45 |
| 19506 | 23" POLY VERTICAL STAND ADAPTOR | 7 |
| OC036-STP | 36" POLY CONE BOTTOM STAND | 92 |
| 19507 | 36" POLY VERTICAL STAND ADAPTOR | 15 |
| CB023-15ST | 23" METAL STAND | 37 |
| CB036-15ST | 36" METAL STAND | 84 |



Warning: Cancer and Reproductive Harm.
www.P65Warnings.ca.gov

Cone Bottom Tanks are selected when a more complete drain out of stored chemical is required in indoor or outdoor installations. Tanks require stands to support the conical bottoms. Tanks are manufactured from medium- or high-density polyethylene with UV inhibitors. Tank walls are translucent for level viewing and equipped with gallon indicators.

CONE BOTTOM TANKS - FLAT TOP

| PART NUMBER | CAPACITY | WEIGHT | DIMENSIONS (DIA X HEIGHT) | OVERALL HEIGHT (INCLUDING STAND) | LID | FITTINGS | SPECIFIC GRAVITY |
|-------------|-----------------------------|--------|---------------------------|----------------------------------|-----|----------|------------------|
| CB0150-36 | 150 GAL - 45° | 63 | 36 X 51 | 63" | 12" | 2" | 2.0 |
| CB0200-42 | 200 GAL - 45° | 77 | 42 X 55 | 67" | 12" | 2" | 2.0 |
| CBFD240-42 | 240 GAL - 45° FULL DRAIN | 77 | 42 X 59 | 69" | 12" | 2" | 2.0 |
| CB0345-52 | 345 GAL - 45° | 102 | 52 X 58 | 70" | 12" | 2" | 2.0 |
| CB0350-42 | 350 GAL - 45° | 120 | 42 X 81 | 93" | 12" | 2" | 2.0 |
| CB0500-52 | 500 GAL - 45° | 132 | 52 X 81 | 92" | 12" | 2" | 2.0 |
| CB0850-90 | 850 GAL - 15° | 212 | 91 X 56 | 67" | 16" | 2" | 1.7 |
| CB1150-90 | 1150 GAL - 15° | 242 | 91 X 67 | 78" | 16" | 2" | 1.7 |
| CB1550-90 | 1550 GAL - 30° | 286 | 91 X 88 | 97" | 16" | 2" | 1.7 |
| CB2450-90 | 2450 GAL - 15° | 437 | 91 X 114 | 125" | 16" | 2" | 1.7 |
| CB2550-90 | 2550 GAL - 30° | 502 | 91 X 126 | 134" | 16" | 2" | 1.7 |

STAND IS REQUIRED



CB350-42



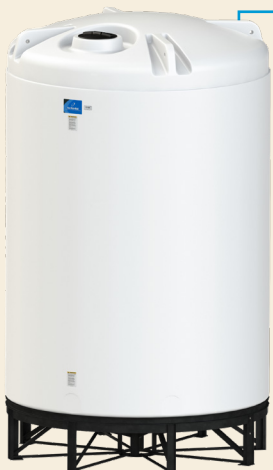
CB0850-90

CONE BOTTOM TANKS - DOME TOP

| PART NUMBER | CAPACITY | WEIGHT | DIMENSIONS (DIA X HEIGHT) | OVERALL HEIGHT (INCLUDING STAND) | LID | FITTINGS | SPECIFIC GRAVITY |
|-------------|----------------|--------|---------------------------|----------------------------------|-----|----------|------------------|
| CB0300-42 | 300 GAL - 45° | 102 | 42 X 67 | 79" | 16" | 2" | 2.0 |
| CB0800-86 | 800 GAL - 15° | 182 | 86 X 48 | 58" | 16" | 2" | 1.7 |
| CB1000-64 | 1000 GAL - 45° | 252 | 64 X 98 | 112" | 16" | 2" | 1.7 |
| CB1000-90 | 1000 GAL - 15° | 212 | 91 X 54 | 64" | 16" | 2" | 1.7 |
| CB1005-64 | 1005 GAL - 15° | 222 | 64 X 86 | 105" | 16" | 2" | 1.7 |
| CB1200-90 | 1200 GAL - 15° | 242 | 91 X 62 | 74" | 16" | 2" | 1.7 |
| CB1300-90 | 1300 GAL - 15° | 262 | 91 X 65 | 75" | 16" | 2" | 1.7 |
| CB1490-64 | 1490 GAL - 45° | 342 | 64 X 132 | 146" | 16" | 2" | 1.7 |
| CB1500-64 | 1500 GAL - 15° | 332 | 64 X 122 | 141" | 16" | 2" | 1.7 |
| CB1500-96 | 1500 GAL - 30° | 252 | 96 X 80 | 92" | 16" | 2" | 1.7 |
| CB1600-90 | 1600 GAL - 30° | 286 | 91 X 85 | 94" | 16" | 2" | 1.7 |
| CB1700-86 | 1700 GAL - 15° | 286 | 86 X 85 | 96" | 16" | 2" | 1.7 |
| CB2000-96 | 2000 GAL - 30° | 292 | 96 X 96 | 108" | 16" | 2" | 1.7 |
| CB2495-90 | 2495 GAL - 30° | 487 | 91 X 119 | 129" | 16" | 2" | 1.7 |
| CB2500-90 | 2500 GAL - 15° | 437 | 91 X 111 | 122" | 16" | 2" | 1.7 |
| CB2600-90 | 2600 GAL - 30° | 502 | 91 X 123 | 132" | 16" | 2" | 1.7 |
| CB2600-86 | 2600 GAL - 45° | 502 | 86 X 146 | 158" | 16" | 2" | 1.7 |
| CB3000-90 | 3000 GAL - 15° | 552 | 91 X 128 | 138" | 16" | 2" | 1.7 |
| CB3000-96 | 3000 GAL - 30° | 552 | 96 X 125 | 137" | 16" | 2" | 1.7 |
| CB4200-122 | 4200 GAL - 15° | 1102 | 122 X 113 | 126" | 16" | 3" | 1.7 |
| CB4600-102 | 4600 GAL - 15° | 1202 | 102 X 155 | 166" | 16" | 2" | 1.7 |
| CB4900-102 | 4900 GAL - 15° | 1302 | 102 X 159 | 170" | 16" | 2" | 1.7 |
| CB6000-122 | 6000 GAL - 15° | 1602 | 122 X 150 | 162" | 16" | 3" | 1.7 |
| CB6900-122 | 6900 GAL - 15° | 1702 | 122 X 168 | 178" | 16" | 3" | 1.7 |
| CB8250-122 | 8250 GAL - 15° | 2102 | 122 X 195 | 206" | 16" | 3" | 1.7 |

STAND IS REQUIRED

CB8250-122



Warning: Cancer and Reproductive Harm.
www.P65Warnings.ca.gov

CONE BOTTOM STANDS

| PART NUMBER | DESCRIPTION | WEIGHT | DIMENSIONS (DIA X HEIGHT) | CLEARANCE |
|--------------|--|--------|------------------------------|-----------|
| CB036-45ST | 150 GAL – 45° | 63 | 64 X 61 | 12" |
| CB042-45ST | 200, 300 OR 350 GAL – 45° | 82 | 41 X 34 | 11" |
| CBFD042-45ST | 240 GAL FULL DRAIN – 45° | 82 | 42 X 42 | 10" |
| CB052-45ST | 345 OR 500 GAL – 45° | 174 | 55 X 41 | 13" |
| CB064-15ST | 1005 OR 1500 GAL – 15° | 320 | 64 X 25 | 16" |
| CB064-45ST | 1000 OR 1490 GAL – 45° | 320 | 64 X 61 | 14" |
| CB086-15ST | 800 OR 1700 GAL – 15° | 360 | 86 X 23 | 11" |
| CB086-45ST | 2600 GAL – 45° | 580 | 86 X 49 | 12" |
| CB090-15ST | 850, 1000, 1150, 1200, 1300, 2450, 2500 OR 3000 GAL – 15° | 380 | 90 X 24 | 11" |
| CB090-30ST | 1550, 1600, 2550 OR 2600 GAL – 30° | 640 | 94 X 40 | 9" |
| CB096-30ST | 1500, 2000, 3000 GAL – 30° | 553 | 96 X 38 | 12" |
| CB102-15ST | 4600 OR 4900 GAL – 15° | 640 | 102 X 25 | 11" |
| CB122-15ST | 4200, 6000, 6900 OR 8250 GAL – 15° | 1020 | 122 X 27 | 10" |



CB096-30ST

CONE BOTTOM TANKS - OPEN TOP All tanks come with bolt-on top

Open Top Tanks are selected for collection systems, temporary liquid storage or as secondary containment for tanks in indoor or outdoor stationary installations. Tanks require stands to support the conical bottoms. Tanks are manufactured from medium- or high-density polyethylene with UV inhibitors. Tank walls are translucent for level viewing and equipped with gallon indicators.

| PART NUMBER | DESCRIPTION | WEIGHT | DIMENSIONS (DIA X HEIGHT) | OVERALL HEIGHT | FITTINGS | SPECIFIC GRAVITY |
|-------------|-----------------|--------|------------------------------|----------------|----------|------------------|
| OC0840-90 | 840 GAL – 15° | 214 | 91 X 49 | 61" | 2" | 1.7 |
| OC1010-64 | 1,010 GAL – 45° | 252 | 64 X 99 | 113" | 2" | 1.7 |
| OC1050-90 | 1,050 GAL – 15° | 242 | 91 X 57 | 69" | 2" | 1.7 |
| OC1150-90 | 1,150 GAL – 15° | 262 | 91 X 60 | 72" | 2" | 1.7 |
| OC1450-90 | 1,450 GAL – 30° | 286 | 91 X 79 | 89" | 2" | 1.7 |
| OC1500-64 | 1,500 GAL – 45° | 342 | 64 X 134 | 147" | 2" | 1.7 |
| OC1710-86 | 1,710 GAL – 15° | 286 | 86 X 87 | 98" | 2" | 1.7 |
| OC2350-90 | 2,350 GAL – 15° | 437 | 91 X 106 | 118" | 2" | 1.7 |
| OC2440-90 | 2,440 GAL – 30° | 502 | 91 X 117 | 127" | 2" | 1.7 |
| OC2610-86 | 2,610 GAL – 45° | 502 | 86 X 147 | 158" | 2" | 1.7 |

STAND IS REQUIRED

CONE BOTTOM TANKS - OPEN TOP STANDS

| PART NUMBER | DESCRIPTION | WEIGHT | DIMENSIONS (DIA X HEIGHT) | CLEARANCE |
|-------------|------------------------------------|--------|------------------------------|-----------|
| CB064-45ST | 1010 OR 1500 GAL – 45° | 320 | 64 X 61 | 14" |
| CB086-15ST | 1710 GAL – 15° | 360 | 86 X 23 | 11" |
| CB086-45ST | 2610 GAL – 45° | 580 | 86 X 49 | 12" |
| CB090-15ST | 840, 1050, 1150, OR 2350 GAL – 15° | 380 | 90 X 24 | 11" |
| CB090-30ST | 1450 OR 2440 GAL – 30° | 640 | 90 X 40 | 9" |

OC1010-64



OC1710-86



Warning: Cancer and Reproductive Harm.
www.P65Warnings.ca.gov

INDUCTOR TANKS

Inductor Tanks are selected as supply tanks for indoor or outdoor applications and feature conical bottoms to facilitate liquid drain out. Full-Drain tanks are available with molded in threaded outlet for complete drainage. Tanks require stands to support the conical bottoms. These tanks are manufactured from medium-density polyethylene with UV inhibitors and designed for containment of liquids of up to 1.7 specific gravity. Tank walls are translucent for level viewing and equipped with gallon indicators.

| PART NUMBER | CAPACITY | DESCRIPTION | WEIGHT | DIMENSIONS (DIA X HEIGHT) | LID | FITTINGS | SPECIFIC GRAVITY |
|--------------|----------|-------------|--------|---------------------------|-----|-----------------|------------------|
| INFD7-15† | 7 GAL | FULL DRAIN | 8 | 15 X 21 | 8" | 1 1/2" FPT BOSS | 1.7 |
| INFD10-15 | 10 GAL | FULL DRAIN | 10 | 15 X 25 | 8" | 1 1/2" FPT BOSS | 1.7 |
| IN0015-19† | 15 GAL | | 12 | 19 X 24 | 12" | 2" FPT | 1.7 |
| INFD15-19† | 15 GAL | FULL DRAIN | 12 | 19 X 27 | 12" | 1 1/2" FPT BOSS | 1.7 |
| IN0015-19SM† | 15 GAL | SIDE MOUNT | 10 | 19 X 24 | 12" | 2" FPT | 1.7 |
| IN0030-24† | 30 GAL | | 17 | 24 X 30 | 12" | 2" FPT | 1.7 |
| INFD30-24† | 30 GAL | FULL DRAIN | 17 | 24 X 33 | 12" | 1 1/2" FPT BOSS | 1.7 |
| INFD040-30† | 40 GAL | FULL DRAIN | 26 | 30 X 34 | 12" | 2" MPT BOSS | 1.7 |
| IN0055-24† | 55 GAL | | 24 | 24 X 42 | 12" | 2" FPT | 1.7 |
| INFD55-24† | 55 GAL | FULL DRAIN | 24 | 24 X 46 | 12" | 1 1/2" FPT BOSS | 1.7 |
| INFD60-30† | 60 GAL | FULL DRAIN | 28 | 30 X 38 | 16" | 2" MPT BOSS | 1.7 |
| IN0085-30† | 85 GAL | | 37 | 30 X 43 | 12" | 2" FPT | 1.7 |
| INFD85-30 | 85 GAL | FULL DRAIN | 37 | 30 X 48 | 12" | 2" FPT BOSS | 1.7 |
| IN0110-30 | 110 GAL | | 44 | 30 X 51 | 12" | 2" FPT | 1.7 |
| INFD110-30 | 110 GAL | FULL DRAIN | 44 | 30 X 56 | 12" | 2" FPT BOSS | 1.7 |

STAND IS REQUIRED

† INDICATES CAN BE SHIPPED VIA UPS/FED EX



INDUCTOR STANDS

| PART NUMBER | CAPACITY | DESCRIPTION | WEIGHT |
|---------------|------------------------|--------------------------|--------|
| INFD7-10-ST† | 7 OR 10 GAL | FOR 15" DIA TANK | 12 |
| IN15-ST† | 15 GAL | FOR 15" DIA TANK | 15 |
| INFD15-ST† | 15 GAL | 4" TALLER FOR FULL DRAIN | 16 |
| IN30/55-ST† | 30 OR 55 GAL | FOR 24" DIA TANK | 18 |
| INFD30/55-ST | 30 OR 55 GAL | 4" TALLER FOR FULL DRAIN | 19 |
| IN40/85-ST† | 40, 60, 85, OR 110 GAL | FOR 30" DIA TANK | 40 |
| IN40-ST† | 40 GAL | FOR UPS SHIPMENTS | 40 |
| INFD40/85-ST† | 40, 60, 85, OR 110 GAL | 4" TALLER FOR FULL DRAIN | 45 |

† INDICATES CAN BE SHIPPED VIA UPS/FED EX

BLOW MOLD INDUCTOR TANK SET WITH POLYETHYLENE LEGS

Blow Molded Inductor Tank Sets are designed for indoor or outdoor stationary applications. Anchor Kits are available for transportable (non-DOT regulated) applications. Four blow molded polyethylene legs are included that attach directly to the tank with stainless steel hardware. Tanks feature full drain conical bottoms and outlet for complete drainage. Tank walls are translucent for level viewing and equipped with gallon/liter indicators. Tanks are manufactured from high-density polyethylene with UV inhibitors and are designed for the containment of liquids of up to 1.7 specific gravity.

| PART NUMBER | CAPACITY | WEIGHT | DIMENSIONS (CASE) | LID | FITTINGS | SPECIFIC GRAVITY |
|-------------|-----------------------------------|--------|---------------------|-----|----------|------------------|
| IBFD10-SET† | 10 GAL FULL DRAIN | 37 | 18.5" X 21.5" X 32" | 12" | 2" | 1.7 |
| IBFD15-SET† | 15 GAL FULL DRAIN | 39 | 18.5" X 21.5" X 32" | 12" | 2" | 1.7 |
| IBFD20-SET† | 20 GAL FULL DRAIN | 42 | 18.5" X 21.5" X 32" | 12" | 2" | 1.7 |
| IBFD35-SET† | 35 GAL FULL DRAIN | 41 | 25" X 25" X 43" | 12" | 2" | 1.7 |
| IBFD60-SET† | 60 GAL FULL DRAIN | 47 | 25" X 25" X 55" | 12" | 2" | 1.7 |
| 12695 | BLOW MOLD INDUCTOR LEG ANCHOR KIT | 2 | 6" X 6" X 6" | | | |

† INDICATES CAN BE SHIPPED VIA UPS/FED EX



SHOWN WITH OPTIONAL ANCHOR KIT



Warning: Cancer and Reproductive Harm.
www.P65Warnings.ca.gov

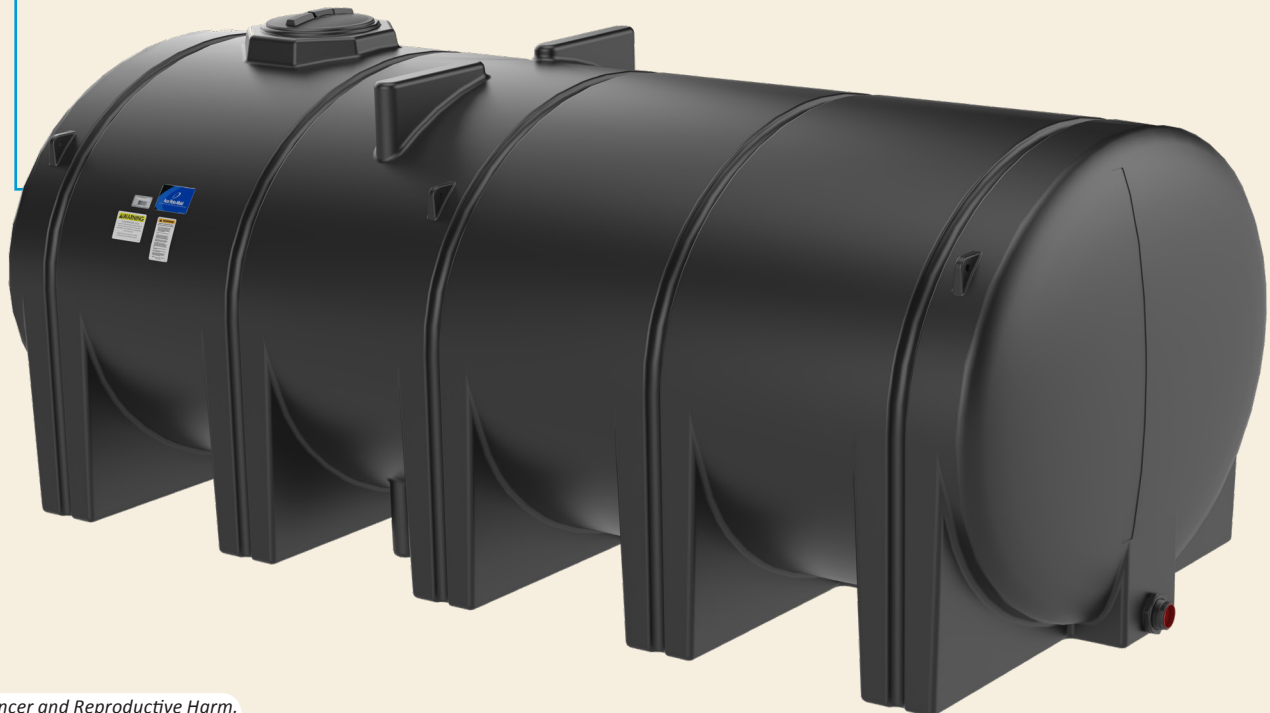
FREE STANDING HORIZONTAL TANKS WITHOUT SUMP

Free Standing Horizontal Tanks are selected when transportable (non-DOT regulated) containment is required for indoor or outdoor applications. Tanks are equipped with molded-in legs to support the tank and band/hoop locators for tie down. Tanks are manufactured from medium- or high-density polyethylene with UV inhibitors and designed for containment of liquids of up to 1.7 specific gravity. Tank walls are translucent for level viewing and equipped with gallon indicators.



| PART NUMBER | CAPACITY | HOOPS | DESCRIPTION | WEIGHT | DIMENSIONS (DIA X HEIGHT) | LID | FITTING | SPECIFIC GRAVITY |
|-------------|----------|----------|-----------------|--------|---------------------------|-----|---------|------------------|
| FS0035-18† | 35 GAL | | | 16 | 18 X 34 | 5" | 1" | 1.7 |
| FS0055-23† | 55 GAL | | | 22 | 23 X 34 | 5" | 1" | 1.7 |
| FS0065-24† | 65 GAL | | | 33 | 24 X 39 | 5" | 1" | 1.7 |
| FS0070-24† | 70 GAL | | STACKABLE | 37 | 24 X 39 | 5" | 1" | 1.7 |
| FS0125-32 | 125 GAL | | | 54 | 32 X 44 | 8" | 1" | 1.7 |
| FS0165-32 | 165 GAL | | | 72 | 32 X 54 | 8" | 1" | 1.7 |
| FS0225-38 | 225 GAL | | | 87 | 38 X 52 | 8" | 2" | 1.7 |
| FS0325-38 | 325 GAL | | | 108 | 38 X 72 | 12" | 2" | 1.7 |
| FS0335-44 | 335 GAL | | | 118 | 44 X 56 | 16" | 2" | 1.7 |
| FS0510-57 | 510 GAL | REQUIRED | ELLIPTICAL | 164 | 57 X 80 X 39 | 16" | 2" | 1.7 |
| FS0535-48 | 535 GAL | | | 162 | 48 X 78 | 16" | 2" | 1.7 |
| FS0735-48 | 735 GAL | REQUIRED | | 252 | 48 X 103 | 16" | 2" | 1.7 |
| FS0925-DW | 925 GAL | REQUIRED | | 292 | 62 X 81 | 16" | 2" | 1.7 |
| FS1005-48 | 1005 GAL | REQUIRED | | 342 | 48 X 130 | 16" | 2" | 1.7 |
| FS1035-78 | 1035 GAL | REQUIRED | ELLIPTICAL | 292 | 78 X 90 X 52 | 16" | 2" | 1.7 |
| FS1065-56W | 1065 GAL | REQUIRED | | 342 | 56 X 105 | 16" | 2" | 1.7 |
| FS1300-DW | 1300 GAL | REQUIRED | | 427 | 62 X 114 | 16" | 2" | 1.7 |
| FS1610-78 | 1610 GAL | REQUIRED | ELLIPTICAL | 530 | 78 X 139 X 56 | 16" | 2" | 1.7 |
| FS1750-62W | 1750 GAL | REQUIRED | | 616 | 62 X 147 | 16" | 2" | 1.7 |
| FS1800-2W | 1800 GAL | REQUIRED | MULTI TANKS (2) | 580 | 62 X 149 | 16" | 2" | 1.7 |
| FS1850-78 | 1850 GAL | REQUIRED | ELLIPTICAL | 571 | 78 X 139 X 63 | 16" | 2" | 1.7 |
| FS2350-88 | 2350 GAL | REQUIRED | ELLIPTICAL | 920 | 88 X 146 X 63 | 16" | 2" | 1.7 |
| FS2600-2W | 2600 GAL | REQUIRED | MULTI TANKS (2) | 850 | 62 X 212 | 16" | 2" | 1.7 |
| FS2750-88 | 2750 GAL | REQUIRED | ELLIPTICAL | 1150 | 88 X 146 X 70 | 16" | 2" | 1.7 |
| FS3250-88 | 3250 GAL | REQUIRED | ELLIPTICAL | 1208 | 88 X 146 X 79 | 16" | 3" | 1.7 |
| FS3750-88 | 3750 GAL | REQUIRED | ELLIPTICAL | 1422 | 88 X 146 X 91 | 16" | 3" | 1.7 |
| FS4200-92 | 4200 GAL | REQUIRED | ELLIPTICAL | 1648 | 92 X 195 X 80 | 16" | 3" | 1.7 |
| FS4250-88 | 4250 GAL | REQUIRED | ELLIPTICAL | 1617 | 88 X 146 X 101 | 16" | 3" | 1.7 |

† INDICATES CAN BE SHIPPED VIA UPS/FED EX



Warning: Cancer and Reproductive Harm.
www.P65Warnings.ca.gov



FM0925-DS

FREE STANDING HORIZONTAL WITH SUMP

| PART NUMBER | CAPACITY | HOOPS | DESCRIPTION | WEIGHT | DIMENSIONS (DIA X HEIGHT) | LID | FITTING | SPECIFIC GRAVITY |
|----------------|----------|----------|-----------------------------|--------|------------------------------|-----|---------|------------------|
| FM0015-14S†* | 15 GAL | | | 13 | 14 X 30 | 5" | | 1.7 |
| FM0025-16S†* | 25 GAL | | | 15 | 16 X 34 | 5" | | 1.7 |
| FM0925-DS* | 925 GAL | REQUIRED | | 292 | 62 X 81 | 16" | 2" | 1.7 |
| FM1010-48* | 1010 GAL | REQUIRED | | 342 | 48 X 130 | 16" | 2" | 1.7 |
| FM1065-56S* | 1065 GAL | REQUIRED | | 342 | 56 X 105 | 16" | 2" | 1.7 |
| FM1300-DS* | 1300 GAL | REQUIRED | | 427 | 62 X 114 | 16" | 2" | 1.7 |
| FM1610-78S* | 1610 GAL | REQUIRED | ELLIPTICAL | 530 | 78 X 139 X 58 | 16" | 2" | 1.7 |
| FM1750-62S* | 1750 GAL | REQUIRED | | 616 | 62 X 147 | 16" | 2" | 1.7 |
| FM1800-2S* | 1800 GAL | REQUIRED | MULTI TANKS (2) | 580 | 62 X 149 | 16" | 2" | 1.7 |
| FM1850-78S* | 1850 GAL | REQUIRED | ELLIPTICAL | 571 | 78 X 139 X 67 | 16" | 2" | 1.7 |
| FM2350-88S* | 2350 GAL | REQUIRED | ELLIPTICAL | 920 | 88 X 146 X 63 | 16" | 2" | 1.7 |
| FM2600-2S* | 2600 GAL | REQUIRED | MULTI TANKS (2) | 850 | 62 X 212 | 16" | 2" | 1.7 |
| FM2750-88S* | 2750 GAL | REQUIRED | ELLIPTICAL | 1150 | 88 X 146 X 70 | 16" | 2" | 1.7 |
| FM3200-2S* | 3200 GAL | REQUIRED | MULTITANKS (2) & ELLIPTICAL | 1100 | 88 X 172 X 74 | 16" | 2" | 1.7 |
| FM3250-88S* | 3250 GAL | REQUIRED | ELLIPTICAL | 1208 | 88 X 146 X 79 | 16" | 3" | 1.7 |
| FM3750-88S* | 3750 GAL | REQUIRED | ELLIPTICAL | 1422 | 88 X 146 X 91 | 16" | 3" | 1.7 |
| NEW FM4200-92* | 4200 GAL | REQUIRED | ELLIPTICAL | 1648 | 92 X 195 X 80 | 16" | 3" | 1.7 |
| FM4250-88S* | 4250 GAL | REQUIRED | ELLIPTICAL | 1617 | 88 X 146 X 101 | 16" | 3" | 1.7 |

† INDICATES CAN BE SHIPPED VIA UPS/FED EX * SKID REQUIRED TO SUPPORT ELEVATED LEGS



FM1750-62S

Used for Lawn and Tree Care



Warning: Cancer and Reproductive Harm.
www.P65Warnings.ca.gov

HOOPS, BAFFLES & SKIDS



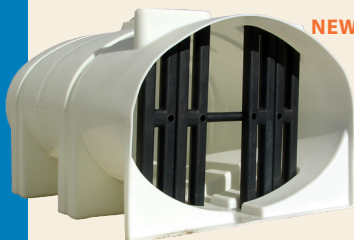
FS1005-HP



FS3250-LAD



FM2350/3250-SKE



| PART NUMBER | CAPACITY/DESCRIPTION | WEIGHT | DIMENSIONS |
|-------------------|--|----------|------------|
| FS048-HP | 735 GAL HOOPS | SET OF 3 | 1.315 OD |
| FS062-HP-925 | 925 GAL HOOPS | SET OF 2 | 1.66 OD |
| FS062-HP-1300 | 1300 GAL HOOPS | SET OF 3 | 1.66 OD |
| FS062-HP-1750 | 1750 GAL HOOPS | SET OF 4 | 1.66 OD |
| FS062-HP-1800C | 1800 GAL HOOPS | SET OF 4 | 1.66 OD |
| FS062-HP-2600C | 2600 GAL HOOPS | SET OF 6 | 1.66 OD |
| FS0510-HP | 510 GAL HOOPS | SET OF 3 | 1.315 OD |
| FS1005-HP | 1005 GAL HOOPS | SET OF 4 | 1.315 OD |
| FM1010-HP | 1010 GAL HOOPS | SET OF 4 | 1.315 OD |
| FS1035-HP | 1035 GAL HOOPS | SET OF 3 | 1.66 OD |
| FS1065-HP | 1065 GAL HOOPS | SET OF 3 | 1.315 OD |
| FS1065-BAF | 1065 GAL BAFFLE KIT (OPTIONAL) | 38 | |
| FS1610-HP | 1610 GAL HOOPS W/O SUMP | SET OF 4 | 1.66 OD |
| FM1610-HP | 1610 GAL HOOPS W/SUMP | SET OF 4 | 1.66 OD |
| FS1850-HP | 1850 GAL HOOPS W/O SUMP | SET OF 4 | 1.66 OD |
| FM1850-HP | 1850 GAL HOOPS W/SUMP | SET OF 4 | 1.66 OD |
| FS2350-HP | 2350 GAL HOOPS | SET OF 4 | 1.90 OD |
| FS2750-HP | 2750 GAL HOOPS | SET OF 4 | 1.90 OD |
| FM3200-HP | 3200 GAL HOOPS | SET OF 4 | 1.66 OD |
| FS3250-HP | 3250 GAL HOOPS | SET OF 4 | 1.90 OD |
| FS3250-LAD | 3250 LADDER | 56 | 16 X 78 |
| FS3750-HP | 3750 GAL HOOPS | SET OF 4 | 1.90 OD |
| FS3750-LAD | 3750 LADDER | 62 | 16 X 90 |
| NEW FS4200-HP-92 | 4200 GAL HOOPS | SET OF 5 | 1.90 OD |
| NEW FS4200-HPF-92 | 4200 GAL HOOPS W/FEET | SET OF 5 | 1.90 OD |
| FS4250-HP | 4250 GAL HOOPS | SET OF 4 | 1.90 OD |
| FS4250-LAD | 4250 LADDER | 68 | 16 X 100 |
| FS0925-SK | 925 GAL SKID | 280 | 61 X 64 |
| FM1010-SK | 1010 GAL SKID | 409 | 53 X 115 |
| FM1065-SKS | 1065 GAL SKID W/SUMP | 280 | 61 X 78 |
| FS1065-SKW | 1065 GAL SKID W/O SUMP | 200 | 59 X 100 |
| FS1300-SK | 1300 GAL SKID | 450 | 64 X 104 |
| FM1610-SKC | 1610 OR 1850 GAL SKID CENTER DRAIN | 490 | 83 X 107 |
| FM1610-SKE | 1610 OR 1850 GAL SKID END SUMP | 490 | 83 X 112 |
| FS1750-SK | 1750 GAL SKID | 604 | 64 X 138 |
| FS1800-SKW | 1800 GAL SKID W/O SUMP | 382 | 64 X 125 |
| FM1800-SKS | 1800 GAL SKID W/SUMP | 580 | 64 X 125 |
| FS2350/3250-SK | 2350, 2750, 3250, 3750, OR 4250 GAL SKID W/O SUMP | 1078 | 88 X 141 |
| FM2350/3250-SKC | 2350, 2750, 3250, 3750, OR 4250 GAL SKID CENTER SUMP | 1060 | 88 X 141 |
| FM2350/3250-SKE | 2350, 2750, 3250, 3750, OR 4250 GAL SKID END SUMP | 1060 | 88 X 141 |
| FS2600-SK | 2600 GAL SKID | 900 | 64 X 201 |
| FS3200-SK | 3200 GAL SKID | 1163 | 90 X 168 |
| NEW FS4200-SKCO | 4200 GAL SKID CENTER SUMP | 1454 | 92 X 190 |
| NEW FS4200-SKEO | 4200 GAL SKID END SUMP | 1454 | 92 X 190 |
| NEW FS4200-SK | 4200 GAL SKID W/O SUMP | 1454 | 92 X 190 |

Baffles

Ace Roto-Mold has developed a unique baffle system that is easy to install and clean. These baffles help to reduce fluid sloshing. Baffle systems come standard in some tanks and offered as an option for others.

Poly baffles for fluid control are inserted through the lid and installed prior to shipment.



Warning: Cancer and Reproductive Harm.
www.P65Warnings.ca.gov



FM3750-88
TANK SHOWN WITH
HOOPS AND SKID

Used for Brine Application



FS4250-88
TANK SHOWN WITH HOOPS,
SKID AND LADDER





Bands with J-bolt

POWDER-COATED STEEL BANDS with J-bolt

| PART NUMBER | DESCRIPTION | WEIGHT | BANDS (W X L) |
|-----------------|------------------------|--------|---------------|
| FS0035-SB†* | 35 GAL KIT SILVER | 2 | 2 X 45 |
| FS0065-SB†* | 65 GAL KIT SILVER | 4 | 2 X 61 |
| FS125/165-SBPJ† | 125/165 GAL KIT SILVER | 10.5 | 3 X 80 |
| FS225/325-SBPJ† | 225/325 GAL KIT SILVER | 13 | 3 X 95 |
| FS0335-SBPJ† | 335 GAL KIT SILVER | 15 | 3 X 110 |
| FS0535-SBPJ† | 535 GAL KIT SILVER | 16 | 3 X 120 |

† INDICATES CAN BE SHIPPED VIA UPS/FED EX * STAINLESS STEEL BANDS STANDARD



Bands with Feet

POWDER-COATED STEEL BANDS with Feet

| PART NUMBER | DESCRIPTION | WEIGHT | BANDS (W X L) |
|-----------------|------------------------|--------|---------------|
| FS0035-SBPF† | 35 GAL KIT SILVER | 8 | 2 X 47.5 |
| FS0065-SBPF† | 65 GAL KIT SILVER | 12 | 2 X 67 |
| FS125/165-SBPF† | 125/165 GAL KIT SILVER | 16 | 2.5 X 84.5 |
| FS225/325-SBPF† | 225/325 GAL KIT SILVER | 19 | 2.5 X 99.5 |
| FS0335-SBPF† | 335 GAL KIT SILVER | 34 | 2.75 X 116.5 |
| FS0535-SBPF† | 535 GAL KIT SILVER | 36 | 2.75 X 125 |

† INDICATES CAN BE SHIPPED VIA UPS/FED EX

ROUND HORIZONTAL TANKS

Round Horizontal Tanks are selected when transportable (non-DOT regulated) containment is required for indoor or outdoor applications. Tanks require cradles and bands to support the round bottom. All tanks are equipped with drain out sumps. Tanks are manufactured from medium-density polyethylene with UV inhibitors and designed for containment of liquids of up to 1.7 specific gravity. Tank walls are translucent for level viewing and equipped with gallon indicators.

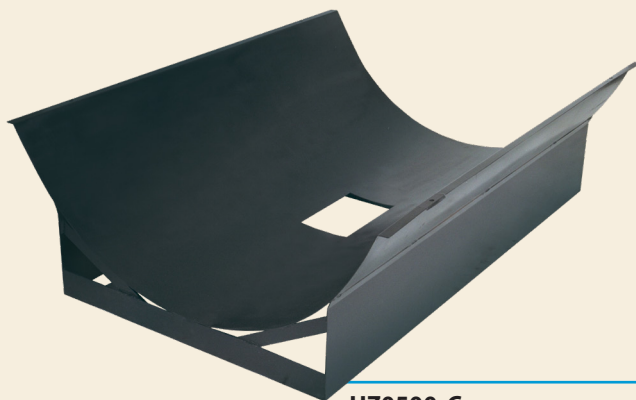


HZ0300-38

| PART NUMBER | CAPACITY | WEIGHT | DIMENSIONS (DIA X HEIGHT) | LID | FITTINGS | SPECIFIC GRAVITY |
|-------------|--------------|--------|---------------------------|-----|---------------|------------------|
| HZ0025-23† | 25 GAL | 16 | 23 X 22 | 5" | 3/4" | 1.7 |
| HZ0055-23† | 55 GAL | 25 | 23 X 38 | 5" | 3/4" | 1.7 |
| HZ0075-24† | 75 GAL | 33 | 24 X 47 | 5" | 3/4" | 1.7 |
| HZ0095-24† | 95 GAL | 37 | 24 X 56 | 5" | 1 1/4" | 1.7 |
| HZ0100-23 | 100 GAL | 40 | 23 X 64 | 5" | 1 1/4" | 1.7 |
| HZ0110-30 | 110 GAL | 42 | 30 X 44 | 8" | 1 1/4" | 1.7 |
| HZ0150-30 | 150 GAL X 30 | 50 | 30 X 57 | 8" | 3/4" & 1 1/4" | 1.7 |
| HZ0150-32 | 150 GAL X 32 | 50 | 32 X 52 | 8" | 3/4" & 1 1/4" | 1.7 |
| HZ0200-32 | 200 GAL X 32 | 66 | 32 X 68 | 8" | 3/4" & 1 1/4" | 1.7 |
| HZ0200-38 | 200 GAL X 38 | 66 | 38 X 51 | 8" | 3/4" & 1 1/4" | 1.7 |
| HZ0300-38 | 300 GAL | 90 | 38 X 76 | 8" | 3/4" & 1 1/4" | 1.7 |
| HZ0400-42 | 400 GAL | 117 | 42 X 76 | 8" | 3/4" & 1 1/4" | 1.7 |
| HZ0500-48 | 500 GAL | 124 | 48 X 79 | 8" | 3/4" & 1 1/4" | 1.7 |

† INDICATES CAN BE SHIPPED VIA UPS/FED EX

HORIZONTAL CRADLES



HZ0500-C

| PART NUMBER | CAPACITY | WEIGHT | BANDS (W X L) |
|-------------|--------------|--------|---------------|
| HZ0025-C*† | 25 GAL | 18 | 1.5" X 50" |
| HZ0055-C*† | 55 GAL | 24 | 2" X 50.5" |
| HZ0075-C† | 75 GAL | 36 | 2" X 51.5" |
| HZ0095-C† | 95 GAL | 38 | 2" X 51.5" |
| HZ0100-C† | 100 GAL | 40 | 1.75" X 41.5" |
| HZ0110-C† | 110 GAL | 40 | 2.75" X 60" |
| HZ0153-C† | 150 GAL X 30 | 57 | 2.75" X 55" |
| HZ0150-C | 150 GAL X 32 | 56 | 2.75" X 56" |
| HZ0232-C | 200 GAL X 32 | 110 | 2.75" X 57" |
| HZ0238-C | 200 GAL X 38 | 85 | 2.75" X 65" |
| HZ0300-C | 300 GAL | 145 | 2.75" X 69.5" |
| HZ0400-C | 400 GAL | 146 | 2.75" X 76" |
| HZ0500-C | 500 GAL | 170 | 2.75" X 88" |

† INDICATES CAN BE SHIPPED VIA UPS/FED EX

* STAINLESS STEEL BANDS STANDARD (INCLUDED WITH CRADLE)



Warning: Cancer and Reproductive Harm.
www.P65Warnings.ca.gov

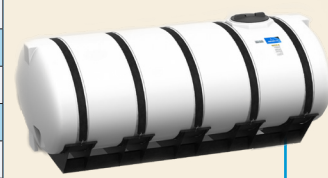
ELLIPTICAL TANKS

Elliptical Tanks can be selected for stationary or transportable (non-DOT regulated) applications both indoor and outdoor. The elliptical tank lowers the center of gravity to enhance stability and visibility. The tanks feature a standard 2 1/2" collection sump on the bottom for full drain out. An 8 1/2" deep sump option is available in five sizes. Sump is located directly under the lid on standard tanks, but a center sump option is available on tanks from 500-1250 gallons. These tanks require the bottom to be fully supported with a cradle for use. The tanks are manufactured from medium-density polyethylene with UV stabilizers and are designed for containment of liquids of up to 1.7 specific gravity. Tank walls are translucent for level viewing and equipped with gallon indicators.

| PART NUMBER | CAPACITY | WEIGHT | DIMENSIONS (W X L X H) | LID | FITTINGS | SPECIFIC GRAVITY |
|-------------|--------------------------|--------|------------------------|-----|---------------|------------------|
| HE0085-36 | 85 GAL | 42 | 36 X 47 X 21 | 7" | NONE | 1.7 |
| HE0200-41 | 200 GAL | 84 | 41 X 66 X 26 | 8" | 3/4" & 1 1/4" | 1.7 |
| HE0300-48 | 300 GAL | 114 | 48 X 70 X 30 | 8" | 3/4" & 1 1/4" | 1.7 |
| HE0400-57 | 400 GAL | 129 | 57 X 70 X 36 | 8" | 3/4" & 1 1/4" | 1.7 |
| HE0500-57+ | 500 GAL | 167 | 57 X 82 X 36 | 8" | 3/4" & 1 1/4" | 1.7 |
| HED0500-57 | 500 GAL 8.5" DEEP | 167 | 57 X 82 X 36 | 8" | 3/4" & 1 1/4" | 1.7 |
| HE0600-64 | 600 GAL | 187 | 64 X 84 X 39 | 16" | 3/4" & 1 1/4" | 1.7 |
| HE0750-69+ | 750 GAL | 222 | 69 X 89 X 42 | 16" | 1 1/4" & 2" | 1.7 |
| HED0750-69 | 750 GAL 8.5" DEEP | 222 | 69 X 89 X 42 | 16" | 1 1/4" & 2" | 1.7 |
| HE0850-69 | 850 GAL | 248 | 69 X 89 X 46 | 16" | 1 1/4" & 2" | 1.7 |
| HED0850-69 | 850 GAL 8.5" DEEP | 248 | 69 X 89 X 46 | 16" | 1 1/4" & 2" | 1.7 |
| HE1000-78* | 1000 GAL | 287 | 78 X 90 X 49 | 16" | 1 1/4" & 2" | 1.7 |
| HED1000-78* | 1000 GAL 8.5" DEEP | 287 | 78 X 90 X 49 | 16" | 1 1/4" & 2" | 1.7 |
| HE1000-BAF | 1000 OPTIONAL BAFFLE KIT | 41 | | | | |
| HE1250-78† | 1250 GAL | 402 | 78 X 92 X 60 | 16" | 1 1/4" & 2" | 1.7 |
| HED1250-78† | 1250 GAL 8.5" DEEP | 402 | 78 X 92 X 60 | 16" | 1 1/4" & 2" | 1.7 |
| HE1600-78† | 1600 GAL | 439 | 78 X 138 X 49 | 16" | 2" | 1.7 |
| HED1600-78† | 1600 GAL 6" DEEP | 439 | 78 X 138 X 49 | 16" | 2" | 1.7 |



HE0300-48



HE1600-78

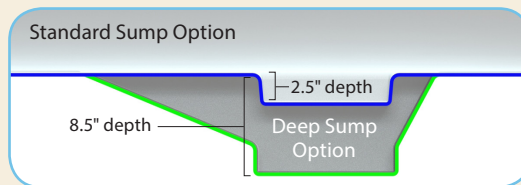
† INDICATES BAFFLE SYSTEM IS STANDARD + AVAILABLE IN FLAT-BOTTOM STYLE
 * INDICATES BAFFLE OPTION AVAILABLE

ELLIPTICAL CRADLES

| PART NUMBER | DESCRIPTION | WEIGHT | BANDS (W X L) |
|-------------|-------------|--------|---------------|
| HE0085-C | 85 GAL | 40 | 2" X 55" |
| HE0200-C | 200 GAL | 140 | 3" X 61" |
| HE0300-C | 300 GAL | 155 | 3" X 74" |
| HE0400-C | 400 GAL | 190 | 4" X 89" |
| HE0500-C | 500 GAL | 202 | 4" X 89" |
| HE0600-C | 600 GAL | 243 | 4" X 92" |
| HE0750-C | 750 GAL | 405 | 4" X 93" |
| HE0850-C | 850 GAL | 408 | 4" X 99" |
| HE1000-C | 1000 GAL | 515 | 4" X 105" |
| HE1250-C | 1250 GAL | 520 | 4" X 126" |
| HE1600-C | 1600 GAL | 578 | 3.5" X 124" |

BANDS INCLUDED WITH CRADLES

Drain Options — Available on 500–1,250 gallon tanks



HE0085-C



HE0600-C

CONTAINMENT TANKS - OPEN TOP

Open Top Tanks are selected for collection systems, temporary liquid storage, or as secondary containment for vertical tanks in indoor or outdoor installations. Tanks are manufactured from medium or high-density polyethylene with UV inhibitors. Tank walls are translucent for level viewing and equipped with gallon indicators. The Open Top Rectangle Tanks (RT) are ONLY for secondary containment purposes. They are not to be utilized for primary storage of liquids.

OP0360-48



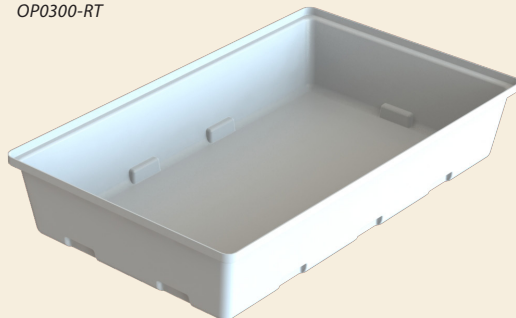
OP1325-RT



| PART NUMBER | CAPACITY | DESCRIPTION | WEIGHT | DIMENSIONS (DIA X HEIGHT) | SPECIFIC GRAVITY |
|-------------|--------------------|------------------------|--------|---------------------------|------------------|
| OP0055-2DC | 2-55 GAL DRUMS | | 70 | 34 X 62 X 26 | 1.7 |
| OP0100-RT^ | 100 GAL RECTANGLE | | 26 | 43 X 43 X 17 | 1.7 |
| OP0150-RT^ | 150 GAL RECTANGLE | | 35 | 47 X 60 X 16 | 1.7 |
| OP0200-RT^ | 200 GAL RECTANGLE | | 78 | 66 X 78 X 12 | 1.7 |
| OP0210-RT^ | 210 GAL RECTANGLE | | 52 | 53 X 65 X 18 | 1.7 |
| OP0210-40 | 210 GAL | | 48 | 40 X 42 | 2.0 |
| OP0300-RT | 300 GAL RECTANGLE | | 82 | 57 X 94 X 18 | 1.7 |
| OP0325-RT^ | 325 GAL RECTANGLE | | 115 | 60 X 96 X 24 | 1.7 |
| OP0360-48 | 360 GAL | | 115 | 48 X 51 | 2.0 |
| OP0425-RT^ | 425 GAL RECTANGLE | | 94 | 69 X 71 X 25 | 1.7 |
| OP0500-56 | 500 GAL | COMES WITH BOLT-ON TOP | 150 | 56 X 65 | 2.0 |
| OP0625-RT^ | 625 GAL RECTANGLE | | 145 | 72 X 108 X 24 | 1.7 |
| OP0635-64 | 635 GAL | COMES WITH BOLT-ON TOP | 102 | 64 X 52 | 1.7 |
| OP0825-RT^ | 825 GAL RECTANGLE | | 276 | 73 X 73 X 66 | 1.7 |
| OP0900-86 | 900 GAL | | 175 | 86 X 43 | 1.7 |
| OP1000-74 | 1000 GAL | COMES WITH BOLT-ON TOP | 277 | 74 X 64 | 1.7 |
| OP1010-64 | 1010 GAL | COMES WITH BOLT-ON TOP | 252 | 64 X 83 | 1.7 |
| OP1060-86 | 1060 GAL | COMES WITH BOLT-ON TOP | 192 | 86 X 56 | 1.7 |
| OP1200-86 | 1200 GAL | | 200 | 86 X 54 | 1.7 |
| OP1210-64 | 1210 GAL | COMES WITH BOLT-ON TOP | 277 | 64 X 100 | 1.7 |
| OP1325-RT^ | 1325 GAL RECTANGLE | | 360 | 84 X 84 X 60 | 1.7 |
| OP1350-86 | 1350 GAL | | 217 | 86 X 62 | 1.7 |
| OP1360-86 | 1360 GAL | COMES WITH BOLT-ON TOP | 230 | 86 X 67 | 1.7 |
| OP1500-86 | 1500 GAL | | 240 | 86 X 68 | 1.7 |
| OP1505-64 | 1505 GAL | COMES WITH BOLT-ON TOP | 337 | 64 X 117 | 1.7 |
| OP1510-86 | 1510 GAL | COMES WITH BOLT-ON TOP | 252 | 86 X 71 | 1.7 |
| OP1660-86 | 1660 GAL | COMES WITH BOLT-ON TOP | 280 | 86 X 76 | 1.7 |
| OP1700-90 | 1700 GAL | | 317 | 91 X 66 | 1.7 |
| OP1825-RT^ | 1825 GAL RECTANGLE | | 520 | 96 X 96 X 62 | 1.7 |
| OP2000-RT^ | 2000 GAL RECTANGLE | | 570 | 96 X 96 X 68 | 1.7 |
| OP2010-64 | 2010 GAL | COMES WITH BOLT-ON TOP | 465 | 64 X 158 | 1.7 |
| OP2060-86 | 2060 GAL | COMES WITH BOLT-ON TOP | 402 | 86 X 95 | 1.7 |
| OP2200-90 | 2200 GAL | | 365 | 91 X 85 | 1.7 |
| OP2700-90 | 2700 GAL | | 480 | 91 X 103 | 1.7 |
| OP3300-102 | 3300 GAL | | 550 | 102 X 105 | 1.7 |
| OP3700-96 | 3700 GAL | | 625 | 96 X 128 | 1.7 |
| OP6800-120 | 6800 GAL | | 1525 | 120 X 146 | 1.7 |

^ RT TANKS DESIGNED FOR SECONDARY CONTAINMENT TANKS ONLY

OP0300-RT



OP3700-96



Warning: Cancer and Reproductive Harm.
www.P65Warnings.ca.gov

DUALLINE™ DOUBLE WALL TANKS

When secondary containment is your first priority!

Dualine™

BY DEN HARTOG INDUSTRIES, INC.

Patent 9,162,816

Other Patents Pending



DW1500-77

DW1000-77

DW0500-57

DW0300-57

DW0150-36

DW0120-36

DW0065-28

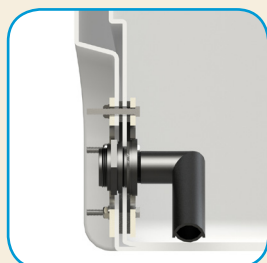
Dualine Tanks

The strong, durable, quality construction is designed for the containment of all chemicals rated for contact with polyethylene. Dualine™ tanks are freestanding, double wall, vertical tanks with a flat bottom for indoor or outdoor stationary applications. Double wall construction provides containment in the event the inner or primary tank is compromised.

An EPDM elastic seal is standard and seals the primary tank to the secondary tank to prevent dirt and moisture from entering the containment space between tanks.

- Furnished with a 16" vented lid assembly as standard.
- Three fitting flats provided on top for custom tank plumbing.
- A service fitting is provided on the secondary tank in the event that the containment requires evacuation.
- Tanks manufactured from polyethylene with UV stabilizers.
- Standard colors are white, yellow and black.
- Designed for the containment of all chemicals rated for contact with polyethylene.
- Standard weight tank is designed for chemicals with a specific gravity of 1.7.

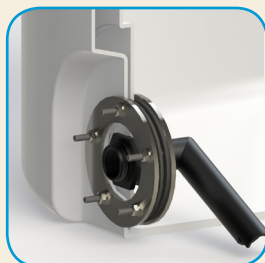
| PART NUMBER | CAPACITY | WEIGHT | DIMENSIONS (DIA X HEIGHT) | SERVICE FITTING | OPTIONAL FITTING |
|-------------|---------------------|--------|---------------------------|-----------------|------------------|
| DW0065-28 | 65 GAL | 52 | 29 X 43 | 1" | 1" |
| DW0120-36 | 120 GAL | 81 | 36 X 50 | 1" | 2" |
| DW0150-36 | 150 GAL | 99 | 36 X 60 | 1" | 2" |
| DW0300-57 | 300 GAL | 190 | 57 X 45 | 1" | 2" |
| DW0500-57 | 500 GAL | 264 | 57 X 69 | 1" | 2" |
| DW1000-77 | 1000 GAL | 522 | 77 X 82 | 1" | 2" |
| DW1500-77 | 1500 GAL | 673 | 77 X 119 | 1" | 2" |
| DW2000-102 | 2000 GAL | 907 | 102 X 97 | 1.5" | 3" |
| DW2500-102 | 2500 GAL | 1153 | 102 X 119 | 1.5" | 3" |
| DW6000-120 | 6000 GAL | 2951 | 120 X 191 | NA | NA |
| DW6500-120 | 6500 GAL | 3152 | 120 X 207 | NA | NA |
| DW19557 | OPTIONAL 1" FITTING | | 1" | | |
| DW19563 | OPTIONAL 2" FITTING | | 2" | | |
| DW19569 | OPTIONAL 3" FITTING | | 3" | | |



Optional Fitting Detail #1



Optional Fitting Detail #2



Optional Fitting Detail #3



Tie Down Detail



Gasket Detail



Warning: Cancer and Reproductive Harm.
www.P65Warnings.ca.gov

Specialty Tanks are available for a variety of custom applications in both stationary and portable configurations. Tanks are manufactured from medium-density polyethylene with UV inhibitors and designed for containment of liquids of up to 1.7 specific gravity. Tank walls are translucent for level viewing and equipped with gallon indicators.

UTILITY TANKS - FLAT BOTTOM



SP0400-UT

| PART NUMBER | CAPACITY | WEIGHT | DIMENSIONS (W X L X H) | LID | FITTING |
|-------------|---------------------------------|--------|------------------------|-----|-------------|
| SP0026-RT† | 26 GAL RECTANGLE | 15 | 18 X 25 X 19 | 8" | 3/4" OUTLET |
| SP0045-AS† | 45 GAL RECTANGLE | 23 | 18 X 37 X 22 | 5" | |
| SP0050-RT†* | 50 GAL RECTANGLE | 27 | 19 X 38 X 23 | 8" | 1" |
| SP0055-MM† | 55 GAL RECTANGLE | 32 | 18 X 18 X 44 | 5" | 1" |
| SP0080-RT†* | 80 GAL RECTANGLE (SUPPORT REQ.) | 42 | 18 X 27 X 44 | 5" | 1" |
| SP0100-RT†* | 100 GAL RECTANGLE | 50 | 27 X 43 X 29 | 8" | 1" |
| SP0150-RT* | 150 GAL RECTANGLE | 62 | 36 X 48 X 29 | 8" | 1" |
| SP0200-RT* | 200 GAL RECTANGLE | 82 | 36 X 48 X 38 | 8" | 1" |

† INDICATES CAN BE SHIPPED VIA UPS/FED EX
 * METAL BANDS AVAILABLE, SOLD SEPARATELY

UTILITY TANKS - SLIM-LINE

| PART NUMBER | CAPACITY | WEIGHT | DIMENSIONS (W X L X H) | LID | FITTING |
|---------------|---------------------------|--------|------------------------|-----|---------|
| SP0250-UT | 250 GAL UPRIGHT RECTANGLE | 115 | 29 X 62 X 42 | 16" | 1 1/2" |
| SP0300-UT | 300 GAL UPRIGHT RECTANGLE | 159 | 29 X 62 X 53 | 16" | 1 1/2" |
| SP0400-UT | 400 GAL UPRIGHT RECTANGLE | 209 | 29 X 62 X 66 | 16" | 2" |
| NEW SP0500-UT | 500 GAL RECTANGLE | 223 | 31 X 74 X 70 | 16" | 2" |
| NEW SP0750-UT | 750 GAL RECTANGLE | 318 | 35 X 82 X 86 | 16" | 2" |
| NEW SP1000-UT | 1000 GAL RECTANGLE | 407 | 40 X 92 X 89 | 16" | 2" |



SP0750-UT

NEW
NEW
NEW

RECTANGLE TANKS - TOTAL DRAIN

| PART NUMBER | CAPACITY | WEIGHT | DIMENSIONS (W X L X H) | LID | FITTING |
|-------------|------------------|--------|------------------------|-----|---------|
| SP0035-RT† | 35 GAL RECTANGLE | 19 | 19 X 28 X 20 | 5" | 1" |
| SP0056-RT† | 56 GAL RECTANGLE | 32 | 20 X 38 X 26 | 5" | 3/4" |

† INDICATES CAN BE SHIPPED VIA UPS/FED EX

LOW PROFILE RECTANGLE TANKS

LP0050-RT

| PART NUMBER | CAPACITY | WEIGHT | DIMENSIONS (W X L X H) | LID | FITTING |
|-------------|----------------------|--------|------------------------|-----|---------|
| LP0050-RT† | 50 GAL RECTANGLE | 37 | 24 X 43 X 15 | 5" | 1" |
| LP0068-RT† | 68 GAL RECTANGLE | 42 | 26 X 42 X 17 | 6" | 1" |
| LP0110-RT† | 110 GAL RECTANGLE | 60 | 35 X 48 X 19 | 5" | 1" |
| LP0200-RT | 200 GAL RECTANGLE | 84 | 48 X 60 X 19 | 8" | 1" |
| LP0300-RT | 300 GAL RECTANGLE | 135 | 48 X 80 X 21 | 8" | 2" |
| LP0300-HT | 300 GAL HOLDING TANK | 132 | 56 X 95 X 16 | 6" | 3" |

† INDICATES CAN BE SHIPPED VIA UPS/FED EX

POWDER-COATED STEEL BANDS for Low Profile & Utility Tanks



LP0068-SBP

| PART NUMBER | CAPACITY | DESCRIPTION | WEIGHT | BANDS (W X L) |
|-------------|----------|---------------------------|--------|---------------|
| SP0050-SBP | 50 GAL | RECTANGLE KIT | 7 | 2 X 54.5 |
| SP0080-SBP | 80 GAL | RECTANGLE SUPPORT BAND | 21 | 3 X 93 |
| SP0100-SBP | 100 GAL | RECTANGLE KIT | 11 | 2.25 X 70.5 |
| SP0150-SBP | 150 GAL | RECTANGLE KIT | 14 | 2.25 X 77.5 |
| SP0200-SBP | 200 GAL | RECTANGLE KIT | 16 | 2.25 X 94 |
| LP0050-SBP | 50 GAL | LOW PROFILE RECTANGLE KIT | 7 | 2 X 58 |
| LP0068-SBP | 68 GAL | LOW PROFILE RECTANGLE KIT | 11 | 2 X 58 |
| LP0110-SBP | 110 GAL | LOW PROFILE RECTANGLE KIT | 11 | 2 X 69 |
| LP0200-SBP | 200 GAL | LOW PROFILE RECTANGLE KIT | 14 | 2 X 82.5 |
| LP0300-SBP | 300 GAL | LOW PROFILE RECTANGLE KIT | 16 | 2 X 86.5 |

RINSE TANKS

| PART NUMBER | CAPACITY | WEIGHT | DIMENSIONS (DIA X HEIGHT) | LID | FITTING |
|-------------|-------------------|--------|------------------------------|-----|---------|
| SPBM2.5-RT† | 2.5 GAL RECTANGLE | 4 | 7 X 15 X 14 | 5" | 3/4" |
| SPBM003-RT† | 3 GAL RECTANGLE | 4 | 7 X 12 X 14 | 5" | 3/4" |
| SP003.5-CL† | 3.5 GAL CYLINDER | 5 | 11 X 15 | 5" | 3/4" |
| SPBM04-SQ5† | 4 GAL SQUARE | 5 | 11 X 11 X 15 | 5" | 1 1/4" |
| SPBM04-SQ7† | 4 GAL SQUARE | 5 | 11 X 11 X 16 | 7" | 1 1/4" |
| SPBM04-SQ8† | 4 GAL SQUARE | 5 | 11 X 11 X 14 | 8" | 1 1/4" |
| SPBM05-SQ5† | 5 GAL SQUARE | 5 | 11 X 11 X 20 | 5" | 1 1/4" |
| SPBM05-SQ7† | 5 GAL SQUARE | 5 | 11 X 11 X 20 | 7" | 1 1/4" |
| SPBM05-SQ8† | 5 GAL SQUARE | 5 | 11 X 11 X 18 | 8" | 1 1/4" |
| SP0010-SQ8† | 10 GAL SQUARE | 10 | 13 X 13 X 21 | 8" | 1 1/4" |
| SP0015-SQ5† | 15 GAL SQUARE | 16 | 16 X 16 X 23 | 5" | 1 1/4" |
| SP0015-SQ7† | 15 GAL SQUARE | 16 | 16 X 16 X 24 | 7" | 1 1/4" |
| SP0015-SQ8† | 15 GAL SQUARE | 16 | 16 X 16 X 23 | 8" | 1 1/4" |

† INDICATES CAN BE SHIPPED VIA UPS/FED EX

SPBM002.5-RT



SP0015-SQ8



RECTANGLE TANKS - FLAT BOTTOM

| PART NUMBER | CAPACITY | WEIGHT | DIMENSIONS (W X L X H) | LID | FITTING |
|-------------|------------------------------|--------|---------------------------|-----|-------------|
| SP002.8-RT† | 2.8 GAL | 4 | 9 X 14 X 9 | 5" | |
| SP0005-RT† | 5 GAL | 6 | 10 X 22 X 8 | 5" | |
| SP0006-2P† | 6 GAL W/ PUMP MOUNT & 2" LID | 6 | 12 X 15 X 8 | 2" | |
| SP0006-5N† | 6 GAL W/ 5" LID | 6 | 12 X 15 X 8 | 5" | |
| SP0007-RT† | 7 GAL | 8 | 9 X 14 X 15 | 5" | |
| SP0016-MM† | 16 GAL | 10 | 14 X 21 X 14 | 5" | |
| SP0020-OM† | 20 GAL UPRIGHT | 17 | 11 X 15 X 31 | 5" | 1/2" OUTLET |

† INDICATES CAN BE SHIPPED VIA UPS/FED EX

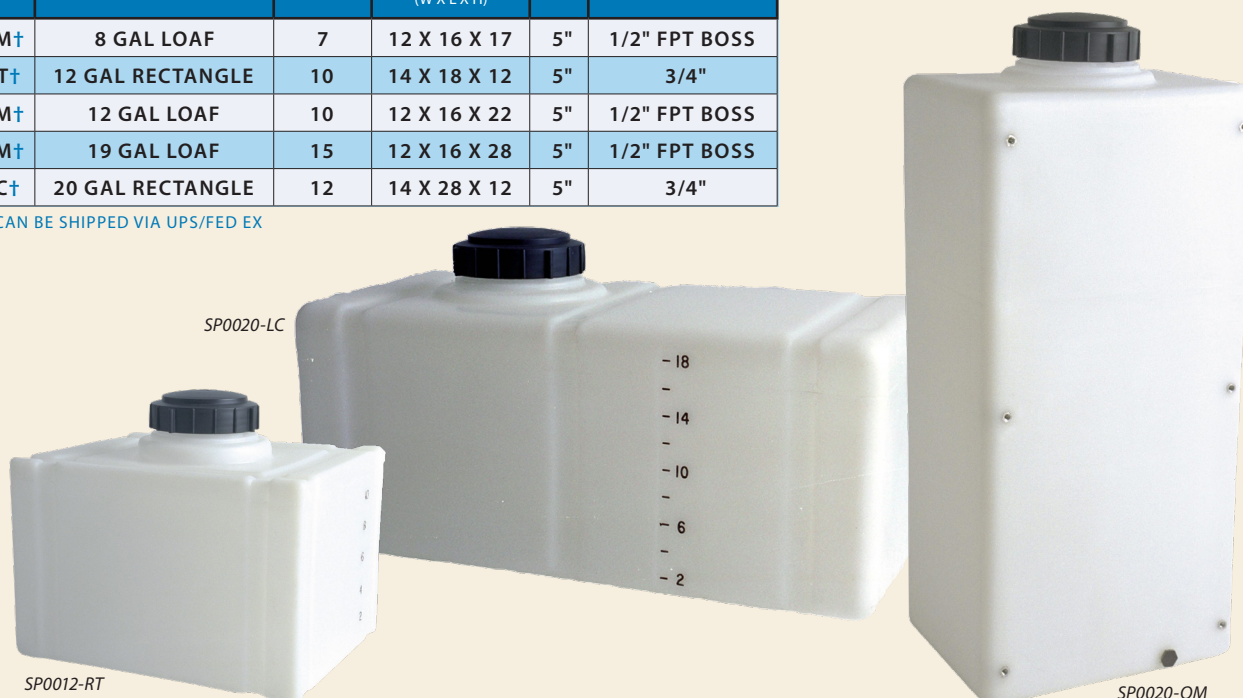
SP0006-2P



APPLICATOR TANKS - SUMP ON BOTTOM

| PART NUMBER | CAPACITY | WEIGHT | DIMENSIONS (W X L X H) | LID | FITTING |
|-------------|------------------|--------|---------------------------|-----|---------------|
| SP0008-VM† | 8 GAL LOAF | 7 | 12 X 16 X 17 | 5" | 1/2" FPT BOSS |
| SP0012-RT† | 12 GAL RECTANGLE | 10 | 14 X 18 X 12 | 5" | 3/4" |
| SP0012-VM† | 12 GAL LOAF | 10 | 12 X 16 X 22 | 5" | 1/2" FPT BOSS |
| SP0019-VM† | 19 GAL LOAF | 15 | 12 X 16 X 28 | 5" | 1/2" FPT BOSS |
| SP0020-LC† | 20 GAL RECTANGLE | 12 | 14 X 28 X 12 | 5" | 3/4" |

† INDICATES CAN BE SHIPPED VIA UPS/FED EX



SP0020-LC

SP0012-RT

SP0020-OM



Warning: Cancer and Reproductive Harm.
www.P65Warnings.ca.gov

Rotomolded Spot Sprayer Tanks are designed as portable applicator supply tanks and are equipped with pump and equipment mount inserts. Tanks are equipped with molded in legs to support the tank and band locators for tie-down. Tanks mount with bottom inserts. Tanks are manufactured from linear low-density polyethylene with UV inhibitors and designed for the containment of liquids of up to 1.7 specific gravity. Tank walls are translucent for level viewing and equipped with gallon indicators.

Blow Molded Applicator Tanks are designed with injection-molded leg inserts that allow the tanks to be anchored for transportable applications. They are furnished with brass inserts for pump and wand clip mounting. Tanks are manufactured from high-density polyethylene with UV stabilizers and designed for containment of liquids up to 1.7 specific gravity. Tanks are equipped with U.S. gallon and metric indicators for liquid level viewing. These tanks are available in white or yellow.

Pest Control Operator (PCO) Tanks can be selected for stationary or transportable (non-DOT regulated) applications both indoor and outdoor. The 50-300 gallon tanks have a rounded bottom for best fluid drainage. A 2" deep sump option is also available on these sizes. PCO tanks must be securely anchored for use in transportable applications and powder-coated steel bands are available for this purpose. The tanks are manufactured from medium-density polyethylene with UV stabilizers and designed for containment of liquids of up to 1.7 specific gravity.

SPOT SPRAYERS



| PART NUMBER | CAPACITY | DESCRIPTION | WEIGHT | DIMENSIONS (W X L X H) | LID |
|-------------|----------|-----------------|--------|------------------------|-----|
| SM0014-14S† | 14 GAL | ROTO W/SUMP | 8 | 14 X 30 X 14 | 5" |
| SS0014-14† | 14 GAL | ROTO W/OUT SUMP | 8 | 14 X 30 X 14 | 5" |
| SM0025-18S† | 25 GAL | ROTO W/SUMP | 14 | 18 X 34 X 18 | 5" |
| SS0025-18† | 25 GAL | ROTO W/OUT SUMP | 14 | 18 X 34 X 18 | 5" |
| SB00015* | 15 GAL | BLOW MOLDED | 7.5 | 34 X 16 X 13 | 5" |
| SB00025* | 25 GAL | BLOW MOLDED | 12 | 36 X 18 X 17 | 5" |
| SB00030* | 30 GAL | BLOW MOLDED | 13 | 19 X 36 X 18 | 5" |
| SB00040† | 40 GAL | BLOW MOLDED | 17.5 | 24 X 36 X 19 | 5" |
| SB00060† | 60 GAL | BLOW MOLDED | 21 | 24 X 36 X 26 | 5" |

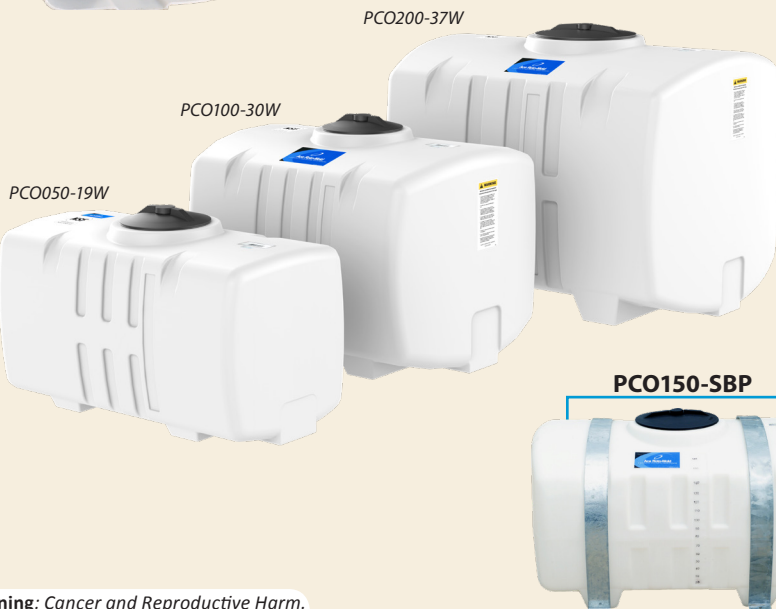
† INDICATES CAN BE SHIPPED VIA UPS/FED EX
* AVAILABLE IN PALLET QUANTITIES ONLY

PCO TANKS



| PART NUMBER | CAPACITY | DESCRIPTION | WEIGHT | DIMENSIONS (W X L X H) | LID | FITTING |
|-------------|----------|-----------------|--------|------------------------|-----|---------|
| PCO035-16W† | 35 GAL | | 26 | 16 X 35 X 21 | 5" | 1" |
| PCO050-19S† | 50 GAL | COMES WITH SUMP | 27 | 19 X 38 X 23 | 8" | 1" |
| PCO050-19W† | 50 GAL | | 27 | 19 X 38 X 23 | 8" | 1" |
| PCO100-30S† | 100 GAL | COMES WITH SUMP | 52 | 30 X 38 X 29 | 8" | 1" |
| PCO100-30W† | 100 GAL | | 52 | 30 X 38 X 29 | 8" | 1" |
| PCO150-37S | 150 GAL | COMES WITH SUMP | 63 | 37 X 48 X 29 | 12" | 1 1/4" |
| PCO150-37W | 150 GAL | | 63 | 37 X 48 X 29 | 12" | 1 1/4" |
| PCO200-37S | 200 GAL | COMES WITH SUMP | 84 | 37 X 48 X 38 | 12" | 1 1/4" |
| PCO200-37W | 200 GAL | | 84 | 37 X 48 X 38 | 12" | 1 1/4" |
| PCO300-37S | 300 GAL | COMES WITH SUMP | 160 | 37 X 69 X 40 | 16" | 2" |
| PCO300-37W | 300 GAL | | 160 | 37 X 69 X 40 | 16" | 2" |

† INDICATES CAN BE SHIPPED VIA UPS/FED EX



POWDER-COATED STEEL BANDS

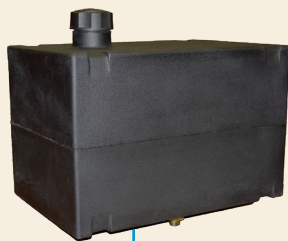
for PCO Tanks

| PART NUMBER | CAPACITY | WEIGHT | DIMENSIONS (DIA X HEIGHT) |
|-------------|-------------|--------|---------------------------|
| PCO035-SB†* | 35 GAL SET | 3 | 2 X 50.5 |
| PCO050-SBP | 50 GAL SET | 6 | 2.5 X 57.5 |
| PCO100-SBP† | 100 GAL SET | 20 | 2.5 X 76 |
| PCO150-SBP† | 150 GAL SET | 30 | 3.5 X 82 |
| PCO200-SBP† | 200 GAL SET | 36 | 3.5 X 98 |
| PCO300-SBP† | 300 GAL SET | 40 | 4 X 100 |

† INDICATES CAN BE SHIPPED VIA UPS/FED EX
* PCO035 BANDS ARE STAINLESS STEEL
ALL OTHER SIZES ARE POWDER-COATED SILVER



Warning: Cancer and Reproductive Harm.
www.P65Warnings.ca.gov



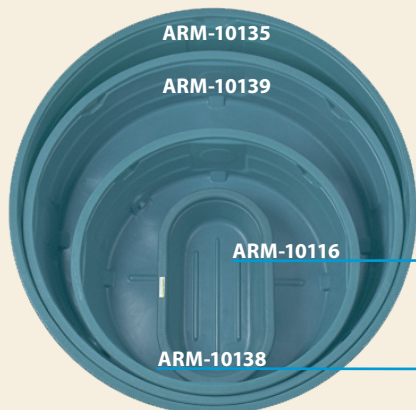
SP0006-FUWB

FUEL TANKS

Fuel Tanks are manufactured from high-density, cross-linked polyethylene with UV stabilizers and are available in natural and black colors. Tanks are designed for the containment of all chemicals (including gasoline and diesel fuel) rated for contact with cross-linked polyethylene. The standard weight tank is designed for chemicals with a specific gravity of 1.75. Tanks are provided with a collection sump on the bottom for fitting installation, but because of the variety of applications, no fittings are furnished. Please consult factory regarding available fittings.

| PART NUMBER | CAPACITY | WEIGHT | DIMENSIONS (W X L X H) | LID |
|--------------|---|--------|------------------------|-----|
| SP0006-FU† | 6 GAL FUEL XLPE | 5 | 10 X 15 X 10 | 2" |
| SP0006-FUWB† | 6 GAL FUEL XLPE W/ 1/4" BRASS BULKHEAD | 5 | 10 X 15 X 10 | 2" |
| SP0012-FU† | 12 GAL FUEL XLPE | 9 | 14 X 18 X 12 | 2" |
| SP0012-FUWB† | 12 GAL FUEL XLPE W/ 1/4" BRASS BULKHEAD | 9 | 14 X 18 X 12 | 2" |

† INDICATES CAN BE SHIPPED VIA UPS/FED EX



STOCK TANKS

Stock Tanks are designed for portable livestock watering. Tank tops, sides and bottom are ribbed for strength. Drain plug is provided on all tanks except the 124 model. Tank models are nestable for shipping and storage. Tanks are manufactured from USDA compliant low-density polyethylene with UV inhibitors and designed for containment of liquids of up to 1.0 specific gravity.

| PART NUMBER | CAPACITY | DESCRIPTION | WEIGHT | DIMENSIONS (DIA X HEIGHT) | DRAIN PLUG |
|-------------|---------------|-------------|--------|---------------------------|--------------|
| ARM-10115 | 50 GAL OVAL | RE124 | 16 | 50 X 31 X 12 | NOT INCLUDED |
| ARM-10116 | 100 GAL OVAL | RE224 | 26 | 55 X 31 X 25 | 1" |
| ARM-19455 | 120 GAL ROUND | R42 | 32 | 48 X 24 | 1 1/2" |
| ARM-10117 | 150 GAL OVAL | RE226 | 48 | 75 X 31 X 25 | 1" |
| ARM-10138 | 320 GAL ROUND | R62 | 62 | 72 X 24 | 1 1/2" |
| ARM-10139 | 610 GAL ROUND | R82 | 105 | 96 X 24 | 1 1/2" |
| ARM-10135 | 920 GAL ROUND | R92 | 140 | 106 X 29 | 1 1/2" |

PICK UP TANKS

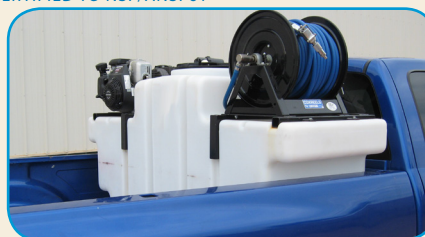
Pick Up Tanks are selected as applicator tanks or when transportable (non-DOT regulated) containment is required. Tanks are designed to fit most pick up trucks. Tanks are manufactured from medium-density polyethylene with UV inhibitors and designed for containment of liquids of up to 1.7 specific gravity. Tank walls are translucent for level viewing and equipped with gallon indicators.

| PART NUMBER | CAPACITY | WEIGHT | DIMENSIONS (DIA X HEIGHT) | LID | FITTING |
|-------------|----------|--------|---------------------------|-----|---------|
| PU0200-52 | 200 GAL | 56 | 52 X 30 | 8" | 2" |
| PU0205-52 | 205 GAL | 87 | 52 X 52 X 26 | 7" | 2" |
| PU0305-60* | 305 GAL | 107 | 60 X 58 X 30 | 7" | 2" |
| PU0350-62 | 350 GAL | 94 | 62 X 34 | 8" | 2" |
| PU0450-62 | 450 GAL | 104 | 62 X 41 | 8" | 2" |
| SSPU0200-70 | 200 GAL | 120 | 70 X 29 X 42 | 12" | N/A |
| SSPU0300-70 | 300 GAL | 174 | 70 X 41 X 42 | 12" | N/A |
| SSPU0400-70 | 400 GAL | 202 | 70 X 52 X 42 | 12" | N/A |

* STANDARD TANK IS 1.5 SPECIFIC GRAVITY. ABLE TO GO UP TO 1.7 WITH HEAVIER TANK CERTIFIED TO NSF/ANSI 61



PU0350-62 Shown in Pick Up Truck



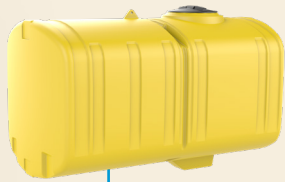
SSPU0200 Shown in Pick Up Truck



SSPU0200-70



SSPU0300-70



CM0750-48



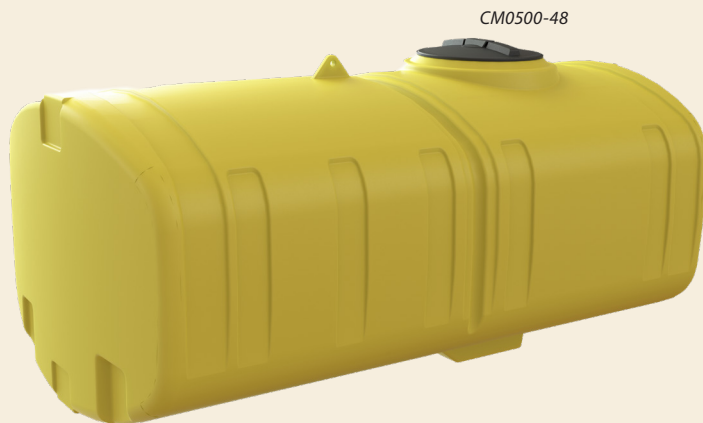
CC1500-58N

CROP CARE TANKS Tanks are shipped on returnable pallet; fittings shipped loose

Crop Care Tanks are designed for OEM sprayer applications that contain chemicals rated for contact with polyethylene. Hoop recesses are provided around the tank to facilitate installation and anchoring. Wide bottom tanks are available with either box-style or sloped-style sump on the bottom for withdrawal. Narrow bottom tanks are cut out on each side to facilitate narrow track widths and are only available with a sloped-style sump. Larger tanks are furnished with polyethylene baffles for fluid control and a five-gallon rinse tank. The tanks are manufactured from high-density polyethylene with UV stabilizers designed for liquids of up to 1.9 specific gravity.

| PART NUMBER | CAPACITY | WEIGHT | DIMENSIONS (W X L X H) | LID | FITTING |
|-------------|---------------------------------------|--------|---------------------------|-----|---------|
| CM0500-48 | 500 GAL W/ SUMP | 202 | 48 X 90 X 38 | 16" | 2" |
| CM0750-48 | 750 GAL W/ SUMP | 262 | 48 X 90 X 50 | 16" | 2" |
| CC1000-58S* | 1000 GAL W/ SLOPED SUMP | 345 | 58 X 115 X 47 | 16" | 2" |
| CC1000-58N* | 1000 GAL NARROW BOTTOM W/ SLOPED SUMP | 345 | 58 X 115 X 51 | 16" | 2" |
| CM1000-58B* | 1000 GAL W/ BOX SUMP | 350 | 58 X 115 X 47 | 16" | 2" |
| CC1250-58S* | 1250 GAL W/ SLOPED SUMP | 480 | 58 X 115 X 57 | 16" | 2" |
| CC1250-58N* | 1250 GAL NARROW BOTTOM W/ SLOPED SUMP | 480 | 58 X 115 X 61 | 16" | 2" |
| CM1250-58B* | 1250 GAL W/ BOX SUMP | 485 | 58 X 115 X 57 | 16" | 2" |
| CC1500-58S* | 1500 GAL W/ SLOPED SUMP | 550 | 58 X 115 X 66 | 16" | 2" |
| CC1500-58N* | 1500 GAL NARROW BOTTOM W/ SLOPED SUMP | 550 | 58 X 115 X 70 | 16" | 2" |
| CM1500-58B* | 1500 GAL W/ BOX SUMP | 550 | 58 X 115 X 66 | 16" | 2" |

* BAFFLES & RINSE TANK INCLUDED



CM0500-48

CROP CARE HOOPS

| PART NUMBER | CAPACITY/DESCRIPTION | KIT |
|-------------|----------------------|------------------------|
| CC0500-HPS | 500 GAL HOOP | 1 HOOP (1)-1 2/3" PIPE |
| CC0750-HPS | 750 GAL HOOP | 1 HOOP (1)-1 2/3" PIPE |
| CC1000-HP | 1000 GAL HOOPS | 1 SET (3)-2 3/8" PIPES |
| CC1250-HP | 1250 GAL HOOPS | 1 SET (3)-2 3/8" PIPES |
| CC1500-HP | 1500 GAL HOOPS | 1 SET (5)-2 3/8" PIPES |

CC1500-58N



TRACTOR MOUNTED TANKS

Tractor Mounted Tanks are designed as portable (non-DOT regulated) applicator tanks. Tanks require the bottom to be fully supported with a cradle for use. Gallon indicators are included and the tank walls are translucent for level viewing. Ends of tanks feature fitting flats to facilitate a variety of installation options. Bottoms of tanks feature a collection sump for full drain out. Tanks are manufactured from medium-density polyethylene with UV inhibitors and designed for containment of liquids of up to 1.7 specific gravity.

OVAL TANKS

| PART NUMBER | CAPACITY | WEIGHT | DIMENSIONS (W X L X H) | LID | FITTING |
|-------------|----------|--------|------------------------|-----|-----------------|
| OT0300-31 | 300 GAL | 102 | 31 X 49 X 56 | 16" | 3/4" AND 1 1/4" |

OT0300-31



OVAL CRADLE

| PART NUMBER | CAPACITY | WEIGHT | BANDS (W X L) |
|-------------|----------|--------|---------------|
| OT0300-C | 300 GAL | 137 | 2.5 X 79 |

CUT AWAY TANKS

| PART NUMBER | CAPACITY | WEIGHT | DIMENSIONS (W X L X H) | LID | FITTING |
|-------------|----------|--------|------------------------|-----|-----------------|
| CAW0200-24 | 200 GAL | 82 | 24 X 55 X 46 | 8" | 3/4" AND 1 1/4" |
| CAW0250-24 | 250 GAL | 97 | 24 X 61 X 51 | 8" | 3/4" AND 1 1/4" |

CUT AWAY CRADLES

| PART NUMBER | CAPACITY | WEIGHT | BANDS (W X L) |
|-------------|----------|--------|--------------------|
| CAW0200-C | 200 GAL | 135 | 3 X 60 AND 3 X 40" |
| CAW0250-C | 250 GAL | 143 | 3 X 72 AND 3 X 51" |

CAW0250-24/CAW0250-C



TEAR DROP TANKS

| PART NUMBER | CAPACITY | WEIGHT | DIMENSIONS (W X L X H) | LID | FITTING |
|-------------|----------|--------|------------------------|-----|-----------------|
| TD0250-36 | 250 GAL | 97 | 36 X 52 X 45 | 12" | 3/4" AND 1 1/4" |
| TD0300-36 | 300 GAL | 109 | 36 X 62 X 45 | 12" | 3/4" AND 1 1/4" |

TD0300-36 & TD0300-C

TEAR DROP CRADLES

| PART NUMBER | CAPACITY | WEIGHT | BANDS (W X L) |
|-------------|----------|--------|---------------|
| TD0250-C | 250 GAL | 96 | 2.5" X 74.5" |
| TD0300-C | 300 GAL | 108 | 2.5" X 74.5" |



Warning: Cancer and Reproductive Harm.
www.P65Warnings.ca.gov

PALLET PAKS

Pallet Pak Units are designed for light-duty transport (non-DOT regulated) for indoor or outdoor applications. The base of the pallet frame is designed for forklift transportability. The rectangular pallet paks have a metal frame and plastic base. The vertical paks have poly bases. The tanks are manufactured from medium-density polyethylene with UV inhibitors and are designed for containment of liquids up to 1.7 specific gravity. Tank walls are translucent for level viewing and equipped with gallon indicators.

SP0150-2TPP



| PART NUMBER | CAPACITY | WEIGHT | DIMENSIONS (DIA X HEIGHT) | LID | FITTING |
|-------------|---|--------|---------------------------|-----|--------------------|
| SP0150-PP | 150 GAL PALLET & TANK | 203 | 26 X 43 X 47 | 7" | 2" |
| SP0150-2TPP | 150 GAL PALLET PAK-2 TANKS, PALLET, FRAME | 356 | 50 X 43 X 47 | 7" | 2" |
| SP0300-PP | 300 GAL PALLET PAK-1 TANK, PALLET, FRAME | 316 | 50 X 43 X 47 | 7" | 2" |
| VT0110-PP | 110 GAL PALLET & TANK | 70 | 33 X 40 X 44 | 5" | 2" TOP (MOLDED IN) |
| VT0210-PP | 210 GAL PALLET & TANK | 84 | 41 X 52 | 5" | 2" TOP (MOLDED IN) |

PALLET TANKS

| PART NUMBER | CAPACITY | WEIGHT | DIMENSIONS (DIA X HEIGHT) | LID | FITTING |
|--------------|--------------------------|--------|---------------------------|-----|---------|
| SP0150-PPTK* | 150 GAL RECTANGLE | 82 | 24 X 40 X 42 | 7" | 2" |
| SP0300-PPTK* | 300 GAL RECTANGLE | 122 | 48 X 40 X 42 | 7" | 2" |
| VT0110-32 | 110 GAL TANK ONLY W/SUMP | 42 | 32 X 41 | 5" | 2" TOP |
| VT0210-40 | 210 GAL TANK ONLY | 58 | 40 X 49 | 5" | 2" TOP |

* RECTANGLE TANKS USED WITHOUT THE PALLET STILL REQUIRE SIDE SUPPORT



STACKABLE TOTES

Stackable Totes can be used for indoor or outdoor, stationary or portable applications (non-DOT regulated). Four lift lugs are provided for lifting each tote and a 4-way forklift accessible skid is available for easy handling. Each tote features three 2" threaded ports for dispensing the totes contents. Totes are manufactured from medium-density polyethylene with UV stabilizers.

| PART NUMBER | CAPACITY | WEIGHT | DIMENSIONS (W X L X H) | LID | STACKABLE HEIGHT RESTRICTIONS |
|-------------|----------|--------|------------------------|-----|-------------------------------|
| ST0035-32† | 35 GAL | 30 | 32 X 32 X 15 | 7" | 3 |
| ST0070-32† | 70 GAL | 42 | 32 X 32 X 25 | 7" | 3 |
| ST0120-32 | 120 GAL | 77 | 32 X 32 X 38 | 7" | 2 |
| ST0180-42 | 180 GAL | 126 | 42 X 42 X 35 | 7" | 2 |
| ST0240-42 | 240 GAL | 164 | 42 X 42 X 45 | 7" | 2 |

† INDICATES CAN BE SHIPPED VIA UPS/FED EX



ST0120-32

ST0070-32 x 3

*SHOWN WITH OPTIONAL ACCESSORIES

STACKABLE TOTE ACCESSORIES

| PART NUMBER | CAPACITY | WEIGHT | DIMENSIONS (W X L X H) |
|--------------|---------------------------------|--------|------------------------|
| ST70/120-SK† | 35, 70 OR 120 GAL STEEL SKID | 50 | 30 X 30 X 8 |
| ST024-LG* | 35, 70 OR 120 GAL 24" LEG KIT | 24 | 5 X 5 X 26 |
| ST036-LG* | 35, 70 OR 120 GAL 36" LEG KIT | 70 | 8 X 8 X 41 |
| ST70/120-DT | 35, 70 OR 120 GAL DRIP TRAY KIT | 15 | 5 X 20 X 35 |
| ST70/120-PL | STACKABLE TOTE PLUMBING KIT(S) | | |
| 19508 | 180 & 240 GAL TOTE ADAPTER | 55 | 42 X 42 X 10 |
| ST180/240-ST | 180 & 240 GAL STEEL STAND | 175 | 44 X 44 X 27 |
| ST180/240-DT | 180 & 240 GAL DRIP TRAY KIT | 17 | 5 X 20 X 46 |

† INDICATES CAN BE SHIPPED VIA UPS/FED EX

* SKID REQUIRED WITH LEG KITS



ST70/120-PL Plumbing Kit

ST70/120-DT Drip Tray



Warning: Cancer and Reproductive Harm.
www.P65Warnings.ca.gov

AQUIFER LOW PROFILE CISTERN TANKS

Aquifer Low Profile Cistern Tanks are designed to provide a safe and durable means for the storage of potable or non-potable water. Their sectional ribbing design will sustain vertical soil pressures of up to 400 PSF. Tanks can be buried up to 28" deep and can be backfilled empty. Multiple fitting locations are provided to accommodate a variety of plumbing configurations. Manufactured from high-density polyethylene with UV inhibitors. Aquifers are made from FDA compliant resins and conform to the requirements of NSF/ANSI Standard 61. Designed for the containment of liquids of up to 1.7 specific gravity. Tanks are available with burial lid or ground access assembly options.



LOW PROFILE CISTERNS



CERTIFIED TO NSF/ANSI 61

| PART NUMBER | CAPACITY | WEIGHT | DIMENSIONS (DIA X HEIGHT) |
|-------------|------------------------------------|--------|---------------------------|
| ACT1000-LPB | 1000 GAL W/BURIAL LID | 559 | 98 X 111 X 36 |
| ACT1000-LPG | 1000 GAL W/GROUND ACCESS ASSEMBLY | 595 | 98 X 111 X 36 |
| ACT1500-LPB | 1500 GAL W/BURIAL LID | 702 | 98 X 111 X 48 |
| ACT1500-LPG | 1500 GAL W/GROUND ACCESS ASSEMBLY | 738 | 98 X 111 X 48 |
| ACT2000-LPB | 2000 GAL W/BURIAL LID | 917 | 98 X 158 X 45 |
| ACT2000-LPG | 2000 GAL W/GROUND ACCESS ASSEMBLY | 953 | 98 X 158 X 45 |
| ACT2500-LPB | 2500 GAL W/BURIAL LID | 1031 | 98 X 158 X 54 |
| ACT2500-LPG | 2500 GAL W/GROUND ACCESS ASSEMBLY | 1067 | 98 X 158 X 54 |
| ACT-16053† | AQUIFER 24" BURIAL LID & GASKET | 17 | 35 X 8 |
| ACT-16052 | 28" AQUIFER GROUND ACCESS ASSEMBLY | 53 | 34 X 38 |
| ACT-16054† | 16" AQUIFER GROUND ACCESS ASSEMBLY | 43 | 34 X 24 |
| AST19553 | 24" AQUIFER OPENING RESTRICTOR | 7 | |

† INDICATES CAN BE SHIPPED VIA UPS/FED EX



ACT-16052



AST19553



Burial Lid Flat with Closed Cell Foam Gasket



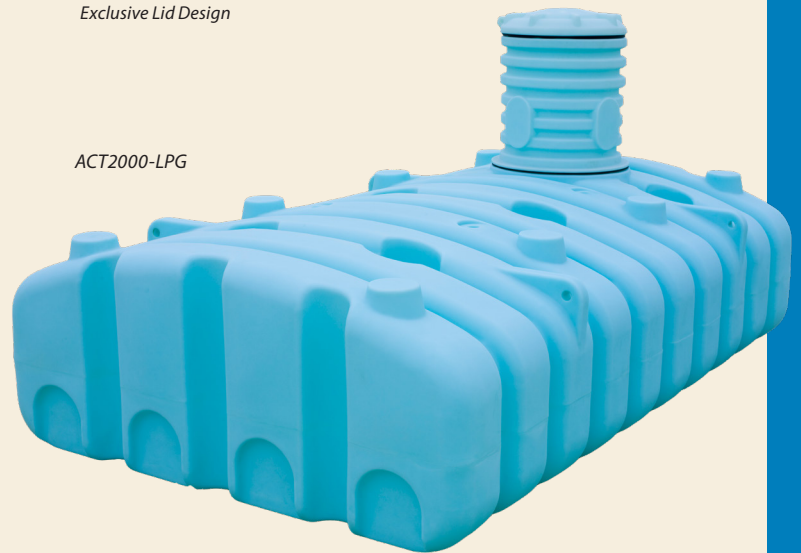
Fitting Flats



Exclusive Lid Design



ACT1500-LPB



ACT2000-LPG

CISTERN TANKS

Cistern Tanks are designed for bulk storage or collection of potable water. Manufactured from high-density polyethylene with UV inhibitors. Tanks are designed for containment of liquids up to 1.7 specific gravity. Tanks feature deep ribbing for strength to permit below-ground installations of up to 36" deep.

| PART NUMBER | CAPACITY | WEIGHT | DIMENSIONS (DIA X HEIGHT) |
|-------------|----------|--------|---------------------------|
| AST-0325-1W | 325 GAL | 134 | 54 X 56 |
| AST-0525-1W | 525 GAL | 194 | 63 X 74 |
| AST-0850-1W | 850 GAL | 259 | 60 X 70 X 60 |
| AST-1150-1W | 1150 GAL | 414 | 60 X 101 X 60 |
| AST-1450-1W | 1450 GAL | 473 | 58 X 118 X 72 |
| AST-1700-1W | 1700 GAL | 567 | 58 X 137 X 72 |



AST-1150-1W



AST-1700-1W

SEPTIC TANKS

Septic Tanks are designed and manufactured to meet wastewater treatment system standards. The 1000, 1250, and 1500 gallon double-compartment septic tanks have been tested by IAPMO to meet the IAPMO/ANSI Z1000-2013 and CSA B66-2016 standards. Consult with the applicable state, county or local codes for polyethylene septic tank compliance and installation requirements. Manufactured from high-density polyethylene with UV inhibitors.



AST-0500-1

AST-0300-1R **NEW**AST-0750-1R **NEW**

AST-1250-2



AST-1500-2

* MANUFACTURED FROM RECLAIMED POLYETHYLENE.

| PART NUMBER | CAPACITY | DESCRIPTION | WEIGHT | DIMENSIONS (DIA X HEIGHT) |
|--------------|----------|---------------|--------|---------------------------|
| AST-0300-1 | 300 GAL | PUMP TANK | 137 | 54 X 56 |
| AST-0300-1R* | 300 GAL | PUMP TANK | 137 | 54 X 56 |
| AST-0500-1 | 500 GAL | PUMP TANK | 197 | 63 X 74 |
| AST-0500-1R* | 500 GAL | PUMP TANK | 197 | 63 X 74 |
| AST-0750-1 | 750 GAL | 1 COMPARTMENT | 259 | 60 X 70 X 60 |
| AST-0750-1R* | 750 GAL | SEPTIC TANK | 259 | 60 X 70 X 60 |
| AST-1000-1 | 1000 GAL | 1 COMPARTMENT | 396 | 60 X 101 X 60 |
| AST-1000-2 | 1000 GAL | 2 COMPARTMENT | 448 | 60 X 101 X 60 |
| AST-1250-1 | 1250 GAL | 1 COMPARTMENT | 446 | 58 X 118 X 72 |
| AST-1250-2 | 1250 GAL | 2 COMPARTMENT | 492 | 58 X 118 X 72 |
| AST-1500-1 | 1500 GAL | 1 COMPARTMENT | 584 | 58 X 137 X 72 |
| AST-1500-2 | 1500 GAL | 2 COMPARTMENT | 630 | 58 X 137 X 72 |

SEPTIC & CISTERN ACCESSORIES

| PART NUMBER | CAPACITY | WEIGHT | DIMENSIONS (DIA X HEIGHT) |
|-------------|--|--------|---------------------------|
| AST19365 | 7" ACCESS EXTENSION - BLACK | 13 | 32.5 X 13.5 |
| AST19379 | 7" ACCESS EXTENSION - WHITE | 13 | 32.5 X 13.5 |
| AST19212 | 16" ACCESS EXTENSION - BLACK | 35 | 32.5 X 16 |
| AST19214 | 16" ACCESS EXTENSION - WHITE | 35 | 32.5 X 16 |
| AST19368 | 16" ACCESS EXTENSION - GREEN | 35 | 32.5 X 16 |
| AST19211 | 24" ACCESS COVER - BLACK | 17 | 32.5 X 8 |
| AST19213 | 24" ACE ACCESS COVER - WHITE | 14 | 32.5 X 8 |
| AST19366 | 24" ACCESS COVER - GREEN | 17 | 32.5 X 8 |
| AST19257 | 8" RISER AND LID - BLACK | 20 | 32.5 X 29 |
| AST19258 | 8" RISER AND LID - WHITE | 20 | 32.5 X 29 |
| AST19544 | 24" SEPTIC/CISTERNS OPENING RESTRICTOR | 4 | |
| AST10078 | 4" SANITARY GASKET | 1 | 4.00 ID X 8 OD |
| AST10084 | 4" SCHEDULE 40 GASKET | 1 | 4.25 ID X 8 OD |
| AST19256 | 4" GASKET RETAINER W/ HARDWARE | 1 | |
| AST10154 | DIVIDER PANEL ASSEMBLY FOR 1000 GAL W/ HARDWARE | 52 | |
| AST19233 | DIVIDER PANEL ASSEMBLY FOR 1250/1500 GAL W/ HARDWARE | 46 | |
| AST18000-XX | INTERNAL PLUMBING KIT | | |

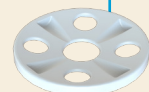


AST19368

AST19257



AST19544



NEW LOW PROFILE SEPTIC TANKS

Low Profile Septic Tanks are available in one-compartment and two-compartment designs and are manufactured for containment of liquids up to 1.7 specific gravity. These low profile tanks are designed and manufactured to meet wastewater treatment system standards. The 1000, 1250, and 1500 gallon double-compartment low profile septic tanks have been tested by IAPMO to meet the IAPMO/ANSI Z1000-2013 and CSA B66-2016 standards.

Tanks feature sectional ribbing designed to sustain vertical soil pressures of up to 500 PSF at a maximum soil depth of 36". Multiple fitting locations are provided to accommodate a variety of plumbing configurations. Tank is furnished with two 24" openings available for burial lids or access and inspection risers each sealed with a PVC closed cell gasket. Tank is designed to be backfilled empty.



| PART NUMBER | CAPACITY | WEIGHT | DIMENSIONS (W X L X H) |
|-------------|----------|--------|------------------------|
| LPS-1000-1 | 1000 GAL | 582 | 72 X 122 X 51 |
| LPS-1000-2 | 1000 GAL | 602 | 72 X 122 X 51 |
| LPS-1250-1 | 1250 GAL | 638 | 72 X 138 X 51 |
| LPS-1250-2 | 1250 GAL | 658 | 72 X 138 X 51 |
| LPS-1500-1 | 1500 GAL | 694 | 72 X 154 X 51 |
| LPS-1500-2 | 1500 GAL | 714 | 72 X 154 X 51 |

LOW PROFILE SEPTIC ACCESSORIES

| PART NUMBER | CAPACITY |
|-------------|---|
| ACT-16054BK | 16" GROUND ACCESS ASSEMBLY W/ GASKET |
| ACT-16053BK | 28" BURIAL LID ASSEMBLY W/ GASKET |
| ACT-16052BK | 28' GROUND ACCESS RISER ASSEMBLY W/GASKET |
| LPS18000-XX | INTERNAL PLUMBING KIT |

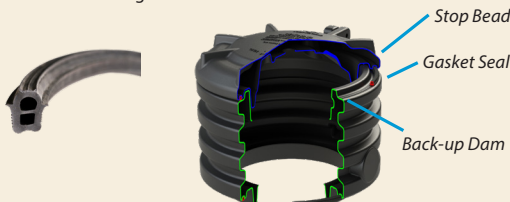


LOW PROFILE SEPTIC KITS

| PART NUMBER | DESCRIPTION | EXTENSION KIT INCLUDES (SEE ABOVE) |
|--------------|--------------------------|------------------------------------|
| LPS-0KIT0BK | BURIAL LID KIT | ACT-16053BK (2) |
| LPS-1KIT16BK | SINGLE 16" EXTENSION KIT | ACT-16053BK (1) & ACT16054BK (1) |
| LPS-2KIT16BK | DOUBLE 16" EXTENSION KIT | ACT16054BK (2) |
| LPS-1KIT28BK | SINGLE 28" EXTENSION KIT | ACT-16053BK (1) & ACT16052BK (1) |
| LPS-2KIT28BK | DOUBLE 28" EXTENSION KIT | ACT16052BK (2) |



Exclusive Lid Design Only Ace Tanks have double-walled access covers that lock securely to the tank body and can be secured using nylon ties, eliminating the need for metal fasteners that can corrode and fail. They feature a custom-molded gasket in the lid. Manufactured from extruded Nitrile Rubber, the gasket snaps into the lid to make a watertight seal.



RISER
The lid with an 8" pipe that may be used to inspect tank.



EXTENSION
Raises the opening of the tank from below grade to above grade and may be stacked to desired height.

LIQUID FEEDER TANKS & WHEELS

Liquid Feeder Tanks are designed for dispensing liquid feed supplements to livestock. These tanks are equipped with rotary dispensing wheels and fill port. Tanks are manufactured from medium-density polyethylene with UV inhibitors and designed for containment of liquids of up to 1.5 specific gravity. Tank walls are translucent for level viewing and equipped with gallon indicators. Wheels sold separately.

| PART NUMBER | CAPACITY | DESCRIPTION | WEIGHT | DIMENSIONS (DIA X HEIGHT) |
|-------------|----------|--|--------|---------------------------|
| LTA155-55 | 155 GAL | LICK TANK – UP TO THREE 24" WHEELS | 57 | 50 X 38 |
| LTA180-68 | 180 GAL | LICK TANK – USES UP TO FOUR 17" WHEELS | 75 | 68 X 34 |
| LTA285-68 | 285 GAL | LICK TANK – USES UP TO FOUR 24" WHEELS | 98 | 68 X 39 |
| LT17W | | 17 INCH WHEEL | 2 | |
| LT24W | | 24 INCH WHEEL | 4 | |

LTA155-55



MINERAL FEEDER

| PART NUMBER | DESCRIPTION | WEIGHT | DIMENSIONS (W X L X H) |
|-------------|-----------------------|--------|------------------------|
| MF-10198† | 100LB. MINERAL FEEDER | 91 | 72 X 72 X 54 |

† INDICATES CAN BE SHIPPED VIA UPS/FED EX

MF-10198



FEED CARTS

| PART NUMBER | CAPACITY | DESCRIPTION | WEIGHT | DIMENSIONS (W X L X H) |
|-------------|----------------------|-------------|--------|------------------------|
| SJ-10183† | 3.5 BUSHEL FEED CART | STANDARD | 60 | 18 X 40 X 36 |
| SJ10232† | 3.5 BUSHEL FEED CART | DELUXE | 65 | 18 X 40 X 36 |

SJ10232



UTILITY CARTS

The Lil' Lugger Utility Cart/Dock Cart is a two wheel utility transport cart. The cart provides 7.5 cubic feet of transport capacity and is designed for transporting loads up to but not exceeding 300 pounds total. The cart has 20" diameter wheels with semi-pneumatic tires with sealed ball bearing support and an adjustable axle to allow load balance adjustments. Carts are manufactured from linear low-density polyethylene with UV stabilizers. Assembly of frame and wheels required.

| PART NUMBER | CAPACITY | DESCRIPTION | WEIGHT | DIMENSIONS (W X L X H) |
|-------------|----------------|-------------|--------|------------------------|
| UC007.5-28 | 7.5 CUBIC FEET | STANDARD | 54 | 51 X 28 X 34 |



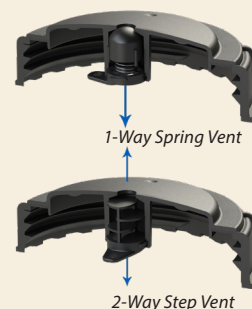
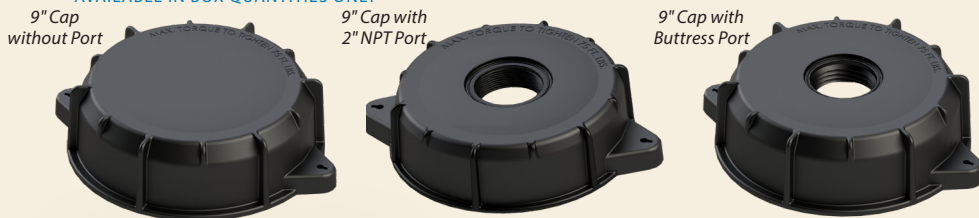
Warning: Cancer and Reproductive Harm.
www.P65Warnings.ca.gov

LIDS

Lids are available in a wide range of sizes from 2" to 22". Most are available with or without venting to suit your applications. Injection molded from polypropylene with UV inhibitors ensures long life.

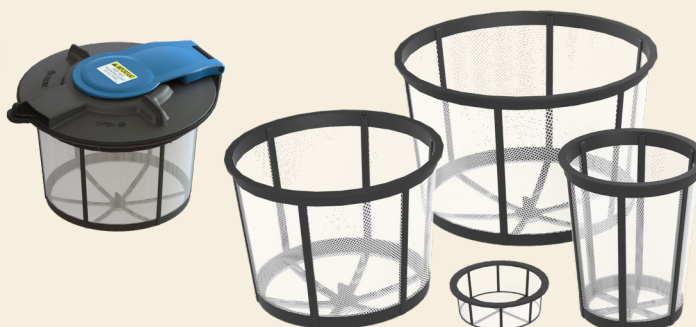
| PART NUMBER | DESCRIPTION |
|-------------------|--|
| 10631 | 2" SPIN ON KELCH CAP |
| 13108 | 3 1/2" VENTED LID & LANYARD ASSEMBLY |
| 19406 | 5" HINGED LOW-PROFILE |
| 13748 | 5" THREADED NON-VENTED LID |
| 13696 | 5" THREADED LID W/VENT |
| 13697 | 5" THREADED LID W/.25" VENT HOLE |
| 13709 | 5" THREADED LID W/2-WAY STEP VENT |
| 13716 | 5" THREADED LID W/VENT & GASKET |
| 13714 | 5" THREADED LID W/2-WAY STEP VENT & GASKET |
| 13717 | 5" THREADED LID W/.25 VENT HOLE & GASKET |
| 13715 | 5" THREADED LID W/.25 VENT HOLE & LANYARD ASSEMBLY |
| 12415 | 7" SPIN-ON NON-VENTED LID |
| 12414 | 7" SPIN-ON SPRING-VENTED LID |
| 12427 | 7" SPIN-ON LID W/STEP VENT |
| 10525 | 8" THREADED VENTED LID & RING |
| 10526 | 12" THREADED NON-VENTED LID & RING |
| 10527 | 12" THREADED VENTED LID & RING |
| 10528 | 16" THREADED VENTED LID & RING |
| 10530 | 22" THREADED VENTED LID & RING |
| 10520 | BREATHER ONLY (FOR 8" & 12" LIDS) |
| 10529 | BREATHER, 4" CENTER (FOR 16" LIDS) |
| 12460 | 12" SELF-ANCHORING LANYARD |
| 10873 | SHORT LANYARD - 12" |
| 10534 | LONG LANYARD - 16" |
| 19024 | OUTLET CAP, 3/4" |
| 19025 | TETHER FOR OUTLET CAP |
| 10960 | GASKET FOR OUTLET CAP |
| NEW 14737* | 9" CAP WITHOUT PORT AND GASKET ASSEMBLY (SANTOPRENE) |
| NEW 14738* | 9" CAP 2" FPT THREAD AND GASKET ASSEMBLY (SANTOPRENE) |
| NEW 14739* | 9" CAP 2" BUTTRESS THREAD AND GASKET ASSEMBLY (SANTOPRENE) |
| NEW 14876* | 9" CAP WITHOUT PORT AND GASKET ASSEMBLY (VITON) |
| NEW 14875* | 9" CAP 2" FPT THREAD AND GASKET ASSEMBLY (VITON) |
| NEW 14874* | 9" CAP 2" BUTTRESS THREAD AND GASKET ASSEMBLY (VITON) |
| NEW 14761 | 16" HINGED VENTED LID |
| NEW 14762 | 16" HINGED NON-VENTED LID |

* AVAILABLE IN BOX QUANTITIES ONLY



STRAINER BASKETS

| PART NUMBER | DESCRIPTION |
|-------------|---------------------------|
| 19469 | BASKET 5" HDPE STRAINER |
| 10535 | STRAINER BASKET 8" |
| 10536 | STRAINER BASKET 12" |
| 19173 | STRAINER BASKET 16" UNICO |
| 10537 | STRAINER BASKET, 16" X 7" |



FITTINGS - BULKHEADS & SYPHON TUBES



| PART NUMBER | DESCRIPTION | HOLE SIZE |
|-------------|--|-----------|
| 10897 | 1/4" BRASS BULKHEAD | 25/32" |
| 10058 | 1/2" ACE BULKHEAD | 1 1/4" |
| 10025 | 1/2" POLYPROPYLENE BULKHEAD | 1 3/8" |
| 13208 | 3/4" ACE BULKHEAD | 1 7/16" |
| 10484 | 3/4" ACE HEAVY-DUTY BULKHEAD | 1 3/4" |
| 10485 | 1" ACE BULKHEAD | 1 3/4" |
| 10503 | 1" POLYPROPYLENE BULKHEAD | 2 1/4" |
| 10918 | 1-1/4" ACE BULKHEAD | 2 1/4" |
| 10507 | 1-1/2" ACE BULKHEAD | 3" |
| 10508 | 2" ACE BULKHEAD | 3" |
| 10486 | 2" STAINLESS STEEL BULKHEAD DOUBLE THREADED | 3" |
| 10912 | 2" ACE HEAVY-DUTY BULKHEAD FOR TANKS OVER 3000 GAL | 3 1/4" |
| 10490 | 2" SS BULKHEAD HEAVY FOR TANKS OVER 3000 GAL | 3 1/4" |
| 12528 | 3" ACE BULKHEAD | 4 1/2" |
| 10487 | 3" STAINLESS STEEL BULKHEAD DOUBLE THREADED | 4 1/2" |
| 11099 | 4" STAINLESS STEEL BULKHEAD | 4 7/8" |
| 10511 | 2" SYPHON TUBE | |
| 10488 | 2" LONG SYPHON TUBE | |
| 10489 | 3" LONG SYPHON TUBE | |
| 13470 | 4" LONG SYPHON TUBE | |

FEATURES

- Retainer ring molded into each fitting prevents the sealing gasket from expanding or sliding out of position under compression
- Bearing washer insures even compression on the gasket and promotes sealing
- Each fitting features left hand compression threads to prevent loosening while installing mating fittings
- Internal threads feature female pipe threads and are provided on both sides of the fitting. Mating fittings can be installed on both sides of the installed fitting
- Sealing gaskets are produced from Santoprene Thermoplastic Rubber (TPR)
- Fitting compression nuts feature a specially designed cross-section to prevent distortion under load

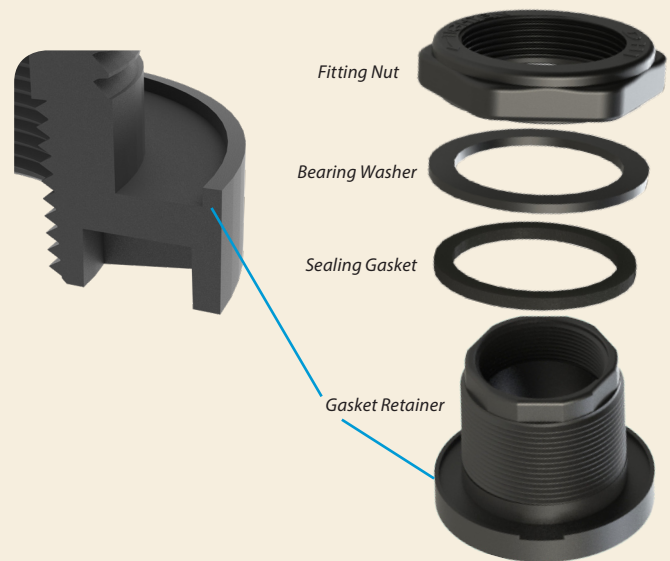
SPINWELDS

Spinwelds feature a hex driving recess to ease installation. This driving recess makes the installation tools universal and easy to construct. These spinwelds also feature a specially designed conical welding surface that helps to center the spinweld and increases the surface welding area.

| PART NUMBER | DESCRIPTION |
|-------------|-------------------------------|
| 10237 | 3/8" THREADED PLUG |
| 10041 | 3/8" THREADED SPINWELD |
| 12104 | 3/4" PATCH (9/16" HEX DRIVE) |
| 10008 | 1" PATCH (3/4" HEX DRIVE) |
| 12429 | 1 1/2" PATCH (3/4" HEX DRIVE) |
| 10441 | 2" PATCH (3/4" HEX DRIVE) |

*BLACK PART NUMBERS LISTED

*CALL FOR QUOTE ON CUSTOM COLORS



ACCESSORY CLIPS

| PART NUMBER | DESCRIPTION |
|-------------|--|
| 19444 | 5/16" ACCESSORY CLIP |
| 12732 | 1/2" ACCESSORY CLIP |
| 12094 | 10-24 X 3/8" PHILLIPS PANHEAD SCREWS W/LOCKING PATCH |
| 12100 | 5/16" ACCESSORY CLIP KIT |
| 12200 | 1/2" ACCESSORY CLIP KIT |

19444



Warning: Cancer and Reproductive Harm.
www.P65Warnings.ca.gov

Slim-Line Utility Tanks Page 18



Low Profile Septic Tanks Page 27



Septic & Pump Tanks Manufactured from Reclaimed Polyethylene Page 26



16" Hinged Lid & 9" Threaded Cap Page 29



4200 Gallon Elliptical Leg Tank Page 10



Den Hartog Industries, Inc
4010 HOSPERS DRIVE SOUTH | PO BOX 425 | HOSPERS, IA 51238-0425

02/2018