



Den Hartog
INDUSTRIES, INC.

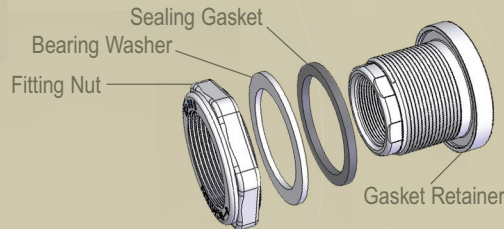
ACCESSORIES LIDS & FITTINGS

FITTINGS

DHI's Injection Division manufactures a wide variety of accessories, lids and fittings to meet the needs of our customers. Our polypropylene bulkhead fittings incorporate an innovative design that is proven to last.

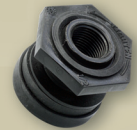
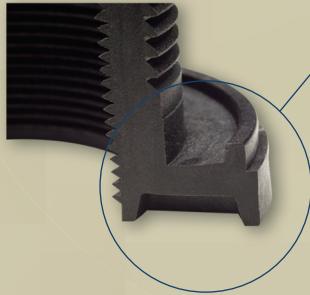


10912



Features ...

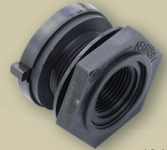
- Retainer ring molded into each fitting prevents the sealing gasket from expanding or sliding out of position under compression.
- Bearing washer insures even compression on the gasket and promotes sealing.
- Each fitting features left hand compression threads to prevent loosening while installing mating fittings.
- Internal threads feature female pipe threads and are provided on both sides of the fitting - mating fittings can be installed on both sides of the installed fitting.
- Sealing gaskets are produced from durable Santoprene thermoplastic rubber (TPR).
- Fitting compression nuts feature a specially designed cross-section to prevent distortion under load.



10058



10484



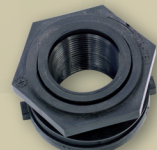
10485



10508



10918



10507

BULKHEAD FITTINGS & SYPHON TUBES

| PART NO. | DESCRIPTION | HOLE REQUIREMENT |
|----------|--------------------------------|------------------|
| 10058 | 1/2" Bulkhead Fitting | 1 1/4" |
| 10484 | 3/4" Bulkhead Fitting | 1 3/4" |
| 10485 | 1" Bulkhead Fitting | 1 3/4" |
| 10918 | 1-1/4" Bulkhead Fitting | 2 1/4" |
| 10507 | 1-1/2" Bulkhead Fitting | 3" |
| 10508 | 2" Bulkhead Fitting | 3" |
| 10912 | 2" Heavy Duty Bulkhead Fitting | 3 1/4" |
| 10511 | 2" Syphon Tube 4" Long | |
| 10488 | 2" Syphon Tube 12" Long | |
| 10489 | 3" Syphon Tube 12" Long | |



10511



10488



10489



10912