



**Serving the farm and ranch industry since 1963**

**PRODUCT CATALOG**







## SMVSTORY

SMV Industries was founded in 1963 after a national mandate requiring the use of the slow moving vehicle sign. In the beginning one employee made the signs that were sold in the farm retail market. As sales increased, more and more employees were hired and new products added to the SMV line of merchandise.

SMV offers manufacturing, warehousing, and distribution to farm/ag/home store retailers. Conveniently located in the Interstate 29 & Interstate 80 corridor in Council Bluffs, IA. We have over 40 years of experience in the Lawn/Garden/Ag Sprayer market with 125,000 sq. ft. warehouse space.

SMV Industries stands out as a company known for its long-term commitments, reliable service, quality products, and competitive pricing. The SMV name brings with it a reputation for integrity. Customers can believe what they are told. As a family-owned business, SMV focuses its attention on managing business over the long term to ensure a significant presence in the marketplace. Customers can rely on SMV's merchandising, warehousing, and distribution system to help them stay competitive in meeting the product and service demands of their customers.

SMV employees are a multi-talented group of people who sincerely care about the products they make and customers they serve. They are hard working people who still believe in old fashioned, midwestern values and service – with a personal touch. We look forward to serving and helping you meet your needs.



51213 195th Street  
Council Bluffs, IA 51503  
712-366-8040  
1-800-831-3308  
smvindcb@gmail.com  
smvindustries.com



## SMV SAFETY SIGNS

The original and universally used, triangular fluorescent display needed for all slow moving vehicles. The units are 14" on a side, easy to apply in a variety of forms and meets the latest ASAE Standards.



<p><b>1-CH</b> SMV Emblem-Metal back Meets ASAE-276.4 Standards Provides reflectivity up to 600 ft 0 12947 00013 5</p>	<p><b>1P-CH</b> SMV Emblem-Poly Styrene back Meets ASAE-276.4 Standards Provides reflectivity up to 600 ft 0 12947 01163 6</p>	<p><b>1FP-CH</b> SMV Emblem-pre-positioned decal Meets ASAE-276.4 Standards Provides reflectivity up to 600 ft 0 12947 16163 8</p>
<p><b>2-CH</b> SMV Emblem-Metal back Meets ASAE-S276.8 Standards Provides reflectivity up to 1000 ft 0 12947 00254 2</p>	<p><b>2P-CH</b> SMV Emblem-Poly Styrene Plastic Meets ASAE-S276.8 Standards Provides reflectivity up to 1000 ft 0 12947 00255 9</p>	<p><b>2FP-CH</b> SMV Emblem-pre-positioned decal Meets ASAE-S276.8 Standards Provides reflectivity up to 1000 ft 0 12947 00253 5</p>

## SMV MOUNTING SOLUTIONS



<p><b>57-BP</b> Spade/Socket Combo 12 per case 8 lbs per case Meets ANSI standards for mounting 0 12947 00332 7</p>	<p><b>5</b> SMV Mounting Socket 12 per case 3 lbs per case 0 12947 00005 0</p>	<p><b>7</b> SMV Mounting Spade 12 per case 6 lbs per case 0 12947 00007 4</p>	<p><b>6</b> SMV Pole Mount 12 per case 15 lbs per case 0 12947 00006 7</p>
---	--	---	--

## SMV WARNING LIGHTS & KITS



**8TF**  
Triangle Warning Kit  
3 triangles per kit  
Meets DOT FMVSS 125 Standards  
0 12947 08206 3



**LED-10F**  
10 Function LED Safety Light  
Magnetic & Hook Mounting  
Battery Operated  
Require 3 AAA batteries (included)  
Up To 38 Hour Run Time



**LSL-A**  
2 Function Amber Light  
Heavy Duty Magnet  
Battery Operated  
Require 4 AA batteries  
(batteries not included)  
012947 00526 0



**LSL-R**  
2 Function Red Light  
Heavy Duty Magnet  
Battery Operated  
Require 4 AA batteries  
(batteries not included)  
0 12947 00527 7



smvindustries.com



WARNING: Cancer and Reproductive Harm  
www.P65Warnings.ca.gov.



## SMV ATV FLAGS



**516**  
Tractor Flag  
Red  
16" x 16" flag  
25 per case  
0 12947 00040 1



**250**  
Bike Flag  
Orange  
6' Pole  
25 per case  
10 lbs per case  
Mounting kit included  
0 12947 00039 5



**ATV-F**  
Fluorescent Red  
Triangular Flag  
6' Pole  
25 per case  
Mounting kit included  
0 12947 00250 4



## SMV FIELD MARKING FLAGS



**350**  
Red Marking Flags  
2.5" x 3.5"  
1000 Case  
100 Bundle  
3 lbs per bundle



**MPF4X5B**  
Blue Marking Flags  
4" x 5"  
1000 Case  
100 Bundle  
34 lbs per case



**MPF4X5Y**  
Yellow Marking Flags  
4" x 5"  
1000 Case  
100 Bundle  
34 lbs per case



**580**  
Fluorescent Orange  
Marking Flags  
5" x 8"  
1000 Case  
100 Bundle  
4.5 lbs per bundle

## SMV SAFETY FENCING & BARRIERS



**SF450-Snow/Barrier Fence**  
4' x 50'  
Easy Install & Take Down  
U.V. Stabilized  
High Visibility Orange  
100% High Density Polyethylene  
240 Rolls/Pallet



**TC-Y300**  
Caution Tape  
3" x 300' roll  
16 per carton  
12 lbs per carton  
0 12947 00093 7

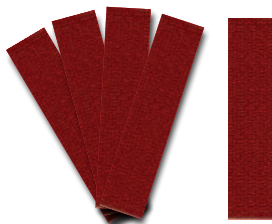


**TC-Y1000**  
Caution Tape  
3" x 1000' roll  
8 per carton  
40 lbs per carton  
0 12947 00094 4

WARNING: Cancer and Reproductive Harm-  
www.P65Warnings.ca.gov.



## SMV CONSPICUITY/REFLECTIVE TAPE



**2RS-4**  
Red Conspicuity Tape  
Available in 4 pack  
or bundles of 100  
2" x 9" Strips  
0 12947 00606 9



**2YS-4**  
Yellow Conspicuity Tape  
Available in 4 pack  
or bundles of 100  
2" x 9" Strips  
0 12947 00607 6



**2ROS-4**  
Fluorescent Orange Reflective Tape  
Available in 4 pack  
or bundles of 100  
2" x 9" Strips  
0 12947 01121 6

# SMVFENCING



5/16 RB • 3/8 RB • 7/16 RB



FG-48



FGC-20

Description	Size	P/N	Case Qty	UPC
PROFILED ELECTRIC FENCE POST	5/16" D X 4'	5/16RB	25 BUNDLE/2000 PALLET	0 12947 00393 8
PROFILED ELECTRIC FENCE POST	3/8" D X 4'	3/8RB	25 BUNDLE/2000 PALLET	0 12947 00043 2
PROFILED ELECTRIC FENCE POST	7/16" D X 4'	7/16RB	20 BUNDLE/1000 PALLET	0 12947 00394 5
FIBERGLASS ELECTRIC FENCE POST	3/8" D X 4'	FG-48	25 BUNDLE	0 12947 00188 0
WIRE FIBERGLASS FENCE POSTS CLIPS	3/8" FIBERGLASS	FGC-20	25 CLIPS PER BAG	0 12947 00234 4

# SMVPOST DRIVERS



PD29



214H



PD36

Description	Size	P/N	Weight/lbs	UPC
BLACK STEEL POST DRIVER	2 1/8" X 29 1/2"	PD29	12	0 12947 00961 9
GREY STEEL POST DRIVER HD	3" X 23 3/4"	214H	17	0 12947 00058 6
ORANGE STEEL POST DRIVER HD	3" ID X 36"	PD36	25	0 12947 01122 3

# SMVEARTH ANCHORS



EA1503 • EA3003 • EA4004 • EA4806

Description	Size	P/N	UPC
EARTH ANCHOR	15" W/3" FOOTPLATE	EA1503	0 12947 00980 0
EARTH ANCHOR	30" W/3" FOOTPLATE	EA3003	0 12947 00981 7
EARTH ANCHOR	40" W/4" FOOTPLATE	EA4004	0 12947 00982 4
EARTH ANCHOR	48" W/6" FOOTPLATE	EA4806	0 12947 00983 1



WARNING: Cancer and Reproductive Harm - www.P65Warnings.ca.gov.







UP-1



UP-3



50



99



918



1221



12

Description	P/N	Case Qty	Weight	UPC
1 GALLON UTILITY PAN	UP-1	18	12 OZ	0 12947 00095 1
3 GALLON UTILITY PAN	UP-3	22	1.5 LBS	0 12947 00096 8
UNIVERSAL RUBBER RAKE TEETH	50	100	49 LBS	0 12947 00050 0
9"X9" GRAIN GATE	99	BULK	7 LBS	0 12947 00025 8
9"X18" GRAIN GATE	918	BULK	12 LBS	0 12947 00026 5
12"X21" GRAIN GATE	1221	BULK	13.5 LBS	0 12947 00027 2
STEERING WHEEL SPINNER KNOB	12	6	.5	0 12947 00012 8



WARNING: Cancer and Reproductive Harm-  
www.P65Warnings.ca.gov.



# SMV HYDRAULIC CYLINDERS



- SMV Hydraulic Cylinders are 100% QC tested at factory level
- 2500 PSI working pressure Dual Acting cylinders
- ASAE & Non-ASAE sizes available
- Call 712-366-8040 for availability

**98/99**  
 Depth Control Collars  
 4 per pack  
 7/8", 1", 1 1/4", 1 1/2"

ASAE – 8" & 16" stroke cylinders available with ASAE configurations. ASAE cylinders have defined retracted dimensions. Non-ASAE cylinder retracted dimensions may vary.

## SMV CYLINDER COMMON DATA

**ASAE vs. Non-ASAE** - 8" & 16" stroke cylinders are available in ASAE & Non-ASAE configurations. 8" & 16" ASAE cylinders have defined retracted dimensions respectively. Non-ASAE retracted dimensions may vary

**Bore** - piston diameter inside the cylinder tube. The larger bore equals greater lifting force

**Rod Diameter** - diameter of the piston or rod. Larger diameter equals greater lifting force

**Stroke** - cylinder travel meaning measured dimensions of the extended length of the rod minus the retracted length (measured center pin to center pin)

**Clevis** - most common end type, consisting of two, one on each end, with holes drilled for pins to go thru

**Tie-Rod** - most common in agricultural applications. Tie-Rods are 4 long, threaded bolts, running the length of the cylinder, to provide extra stability.

**Dual (or Double) Acting** - cylinder works under pressure in a pulling or pushing function

Part #	Description	UPC Code
2x8 ASAE	2x8 ASAE Cylinder	0 12947 00851-3
2.5x8 ASAE	2.5x8 ASAE Cylinder	0 12947 00852-0
3x8 ASAE	3x8 ASAE Cylinder	0 12947 00853-7
3x16 ASAE	3x16 ASAE Cylinder	0 12947 00892-6
3.5x8 ASAE	3.5x8 ASAE Cylinder	0 12947 00854-4
3.5x16 ASAE	3.5x16 ASAE Cylinder	0 12947 00894-0
4x8 ASAE	4x8 ASAE Cylinder	0 12947 00855-1
4x16 ASAE	4x16 ASAE Cylinder	0 12947 00893-3
2x6 NON-ASAE	2x6 NON-ASAE Cylinder	0 12947 00913-8
2x10 NON-ASAE	2x10 NON-ASAE Cylinder	0 12947 00856-8
2x12 NON-ASAE	2x12 NON-ASAE Cylinder	0 12947 00895-7
2x14 NON-ASAE	2x14 NON-ASAE Cylinder	0 12947 00914-5
2x16 NON-ASAE	2x16 NON-ASAE Cylinder	0 12947 00915-2
2.5x10 NON-ASAE	2.5x10 NON-ASAE Cylinder	0 12947 01104-9
2.5x12 NON-ASAE	2.5x12 NON-ASAE Cylinder	0 12947 00916-9
2.5x14 NON-ASAE	2.5x14 NON-ASAE Cylinder	0 12947 00917-6
2.5x16 NON-ASAE	2.5x16 NON-ASAE Cylinder	0 12947 00896-4
2.5x24 NON-ASAE	2.5x24 NON-ASAE Cylinder	0 12947 00918-3
3x6 NON-ASAE	3x6 NON-ASAE Cylinder	0 12947 00938-1
3x10 NON-ASAE	3x10 NON-ASAE Cylinder	0 12947 00857-5
3x12 NON-ASAE	3x12 NON-ASAE Cylinder	0 12947 00858-2
3x16 NON-ASAE	3x16 NON-ASAE Cylinder	0 12947 01120-9
3x14 NON-ASAE	3x14 NON-ASAE Cylinder	0 12947 00919-0
3x24 NON-ASAE	3x24 NON-ASAE Cylinder	0 12947 00920-6
3.5x10 NON-ASAE	3.5x10 NON-ASAE Cylinder	0 12947 00921-3
3.5x12 NON-ASAE	3.5x12 NON-ASAE Cylinder	0 12947 00922-0
3.5x16 NON-ASAE	3.5x16 NON-ASAE Cylinder	0 12947 00936-7
3.5x20 NON-ASAE	3.5x20 NON-ASAE Cylinder	0 12947 00923-7
3.5x24 NON-ASAE	3.5x24 NON-ASAE Cylinder	0 12947 00924-4
3.6x36 NON-ASAE	3.5x36 NON-ASAE Cylinder	0 12947 01105-6
4x8 NON-ASAE	4x8 NON-ASAE Cylinder	0 12947 00855-1
4x10 NON-ASAE	4x10 NON-ASAE Cylinder	0 12947 00897-1
4x12 NON-ASAE	4x12 NON-ASAE Cylinder	0 12947 00925-1
4x16 NON-ASAE	4x16 NON-ASAE Cylinder	0 12947 00937-4
4x20 NON-ASAE	4x20 NON-ASAE Cylinder	0 12947 00926-8
4x24 NON-ASAE	4x24 NON-ASAE Cylinder	0 12947 00859-9

WARNING: Cancer and Reproductive Harm  
[www.P65Warnings.ca.gov](http://www.P65Warnings.ca.gov)

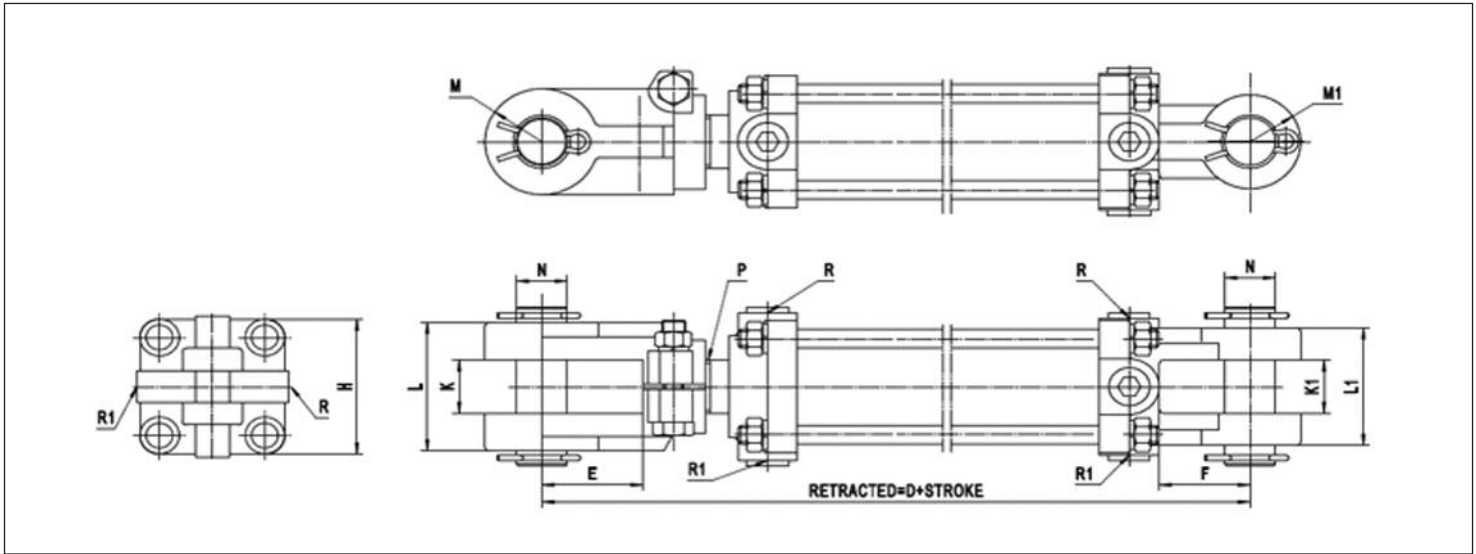
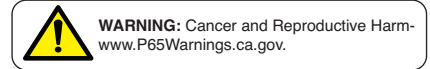




# SMV CYLINDER SPECIFICATIONS

1. 1000 hrs salt-spray tested rods (nickel & chrome) patented procedure
2. 100% oil tested for oil cleanliness = longer lasting/lifetime of parts
3. 100% pressure tested
4. All cylinders 100% washed before welded better welds = fewer leaks from weld defects
5. 2500 PS.I.

Item	SMV Cylinder
Working pressure	2500PSI
Rod	Not Quench & tempered
Seal	Static seal: O-ring Piston seal: 2 backup rings + O-ring
Port	Rod end cap: 1 NPT port Base end cap: 2 NPT ports



Bore	Rod	D	E	F	K	K1	L	L1	M	M1	N	P	R	R1	H
2	1	10-1/4	2-7/64	1-51/64	1-1/8	1-1/8	2-1/2	2-11/32	57/64	27/32	1	1-12UNF	3/8NPT		2-53/64
	1-1/8	10-1/4	2-7/64	1-51/64	1-1/8	1-1/8	2-1/2	2-11/32	57/64	27/32	1	1-1/8-12UNF	3/8NPT		2-53/64
2.5	1-1/8	10-1/4	2-7/64	1-51/64	1-1/8	1-1/8	2-1/2	2-11/32	57/64	27/32	1	1-1/8-12UNF	3/8NPT		3-15/64
	1-1/4	10-1/4	2-7/64	1-51/64	1-1/8	1-1/8	2-1/2	2-11/32	57/64	27/32	1	1-1/4-12UNF	3/8NPT		3-15/64
3	1-1/4	10-1/4	2-7/64	2-7/64	1-1/8	1-1/8	2-1/2	2-11/32	1-1/32	57/64	1	1-1/4-12UNF	1/2NPT		3-45/64
	1-1/2	10-1/4	2-7/64	2-7/64	1-1/8	1-1/8	2-1/2	2-11/32	1-1/32	57/64	1	1-1/4-12UNF	1/2NPT		3-45/64
3.5	1-1/4	10-1/4	2-7/64	2-7/64	1-1/8	1-15/64	2-1/2	2-5/8	1-1/32	1-1/32	1	1-1/4-12UNF	1/2NPT		4-1/4
	1-1/2	10-1/4	2-7/64	2-7/64	1-1/8	1-15/64	2-1/2	2-5/8	1-1/32	1-1/32	1	1-1/4-12UNF	1/2NPT		4-1/4
4	1-1/4	10-1/4	2-7/64	2-7/64	1-1/8	1-15/64	2-3/4	2-57/64	1-1/8	1-3/16	1	1-1/4-12UNF	1/2NPT		4-59/64
	1-1/2	10-1/4	2-7/64	2-7/64	1-1/8	1-15/64	2-3/4	2-57/64	1-1/8	1-3/16	1	1-1/4-12UNF	1/2NPT		4-59/64
	1-3/4	10-1/4	2-7/64	2-7/64	1-1/8	1-15/64	2-3/4	2-57/64	1-1/8	1-3/16	1	1-1/4-12UNF	1/2NPT		4-59/64
	2	10-1/4	2-7/64	2-7/64	1-1/8	1-15/64	2-3/4	2-57/64	1-1/8	1-3/16	1	1-1/4-12UNF	1/2NPT		4-59/64

Bore	Rod	D		F		L		L1		M		M1		N	
		ASAE-8	ASAE-16	ASAE-8	ASAE-16	ASAE-8	ASAE-16	ASAE-8	ASAE-16	ASAE-8	ASAE-16	ASAE-8	ASAE-16	ASAE-8	ASAE-16
2	1-1/8	12-1/4	15-1/2	1-51/64	1-5/8	2-1/2	2-3/4	2-11/32	2-1/2	57/64	1-1/8	27/32	1	1	1-17/64
2-1/2	1-1/8	12-1/4	15-1/2	1-51/64	1-5/8	2-1/2	2-3/4	2-11/32	2-5/8	57/64	1-1/8	27/32	1	1	1-17/64
	1-1/4	12-1/4	15-1/2	1-51/64	1-5/8	2-1/2	2-3/4	2-11/32	2-5/8	57/64	1-1/8	27/32	1	1	1-17/64
3	1-1/4	12-1/4	15-1/2	2-7/64	2	2-1/2	2-3/4	2-11/32	2-5/8	1-1/32	1-1/8	57/64	1-1/8	1	1-17/64
	1-1/2	12-1/4	15-1/2	2-7/64	2	2-1/2	2-3/4	2-11/32	2-5/8	1-1/32	1-1/8	57/64	1-1/8	1	1-17/64
3-1/2	1-1/4	12-1/4	15-1/2	2-7/64	2	2-1/2	2-3/4	2-5/8	2-3/4	1-1/32	1-1/8	1-1/32	1-1/8	1	1-17/64
	1-1/2	12-1/4	15-1/2	2-7/64	2	2-1/2	2-3/4	2-5/8	2-3/4	1-1/32	1-1/8	1-1/32	1-1/8	1	1-17/64
4	1-1/4	12-1/4	15-1/2	2-7/64	2	2-3/4	2-3/4	2-57/64	2-57/64	1-1/8	1-1/8	1-3/16	1-1/4	1	1-17/64
	1-1/2	12-1/4	15-1/2	2-7/64	2	2-3/4	2-3/4	2-57/64	2-57/64	1-1/8	1-1/8	1-3/16	1-1/4	1	1-17/64
	1-3/4	12-1/4	15-1/2	2-7/64	2	2-3/4	2-3/4	2-57/64	2-57/64	1-1/8	1-1/8	1-3/16	1-1/4	1	1-17/64
	2	12-1/4	15-1/2	2-7/64	2	2-3/4	2-3/4	2-57/64	2-57/64	1-1/8	1-1/8	1-3/16	1-1/4	1	1-17/64

# SMV TRAILER JACKS

## Inner & Outer Tubes

Engineered for strength and durability with a tube overlap at extension of 3" for 10" travel jacks and 5" for 15" travel jacks.

## Standard Finish

Zinc chromate on the inner tube and black powder coat on the outer tube.

## Welded Footplate

4" x 7.5" on 2000 lbs jacks and 6" x 8" on 5000 lbs jacks.

## Flange Mount

Features single pull pin snap ring mount and flange plate on 2000 lbs jacks. Double pull pin bolt on mount and flange plate on 5000 lbs jacks.

## Tube Mount

Features 360 degree seam welded tube with four 90 degree locking positions. Unique double lock hitch pin assembly includes 5/8" plated pin. Heavy duty 2" internal mounting tube is included.



8' In-Store Display



10B/15B



10T/15T



10TS/15TS



10BS/15BS



GN10000

Item Number	WT/LBS	Case Qty	Mount	Handle	Travel	Retracted	Extended	Lift Cap./LBS	UPC
10B	12.5	4	FLANGE	TOPWIND	10"	11 7/8"	21 7/8"	2000	0 12947 00008 1
15B	16	4	FLANGE	TOPWIND	15"	14 7/8"	29 7/8"	2000	0 12947 00010 4

Item Number	WT/LBS	Case Qty	Mount	Handle	Travel	Retracted	Extended	Lift Cap./LBS	UPC
10T	12	4	TUBE	TOPWIND	10"	11 7/8"	21 7/8"	2000	0 12947 00009 8
15T	15	4	TUBE	TOPWIND	15"	14 7/8"	29 7/8"	2000	0 12947 00011 1

Item Number	WT/LBS	Case Qty	Mount	Handle	Travel	Retracted	Extended	Lift Cap./LBS	UPC
10TS	13.5	3	TUBE	SIDEWIND	10"	11 7/8"	21 7/8"	2000	0 12947 00016 6
15TS	15	3	TUBE	SIDEWIND	15"	14 7/8"	29 7/8"	2000	0 12947 00017 3

Item Number	WT/LBS	Case Qty	Mount	Handle	Travel	Retracted	Extended	Lift Cap./LBS	UPC
10BS	14	3	FLANGE	SIDEWIND	10"	11 7/8"	21 7/8"	2000	0 12947 00014 2
15BS	17	3	FLANGE	SIDEWIND	15"	14 7/8"	29 7/8"	2000	0 12947 00015 9

Item Number	WT/LBS	Case Qty	Mount	Handle	Support Cap./LBS	Lift Cap./LBS	UPC
GN10000	56	BULK	HD GOOSENECK	SIDEWIND	12,000	10,000	0 12947 00822 3

\*DROPLEG SPRING-LOADED

WARNING: Cancer and Reproductive Harm - www.P65Warnings.ca.gov.



# SMV TRAILER JACKS



1KMR



TR-12V



15-SS



15A

Item Number	WT/LBS	Case Qty	Mount	Handle	Travel	Retracted	Extended	Lift Cap./LBS	UPC
1KMR	13	1	BRACKET	SIDE	10"			1000	0 12947 00899 5

Item Number	WT/LBS	Case Qty	Mount	Travel	Lift Cap./LBS	UPC
TR-12V ELECTRIC	23.5	1	A-FRAME	10"	3500	0 12947 00821 6

Item Number	WT/LBS	Case Qty	Mount	Handle	Travel	Retracted	Extended	Lift Cap./LBS	UPC
15-SS	27.5	1	SQ. TUBE	SIDEWIND	28.5"	23"	51.5"	7000	0 12947 00560 4

Item Number	WT/LBS	Case Qty	Mount	Handle	Travel	Retracted	Extended	Lift Cap./LBS	UPC
15A	12	4	A FRAME	TOPWIND	15"	10"	25"	2000	0 12947 00559 8

# SMV TRAILER JACK PARTS



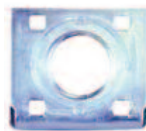
280010



320015



280063



280606



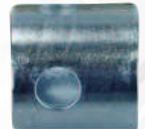
320057



GNHandle



200133

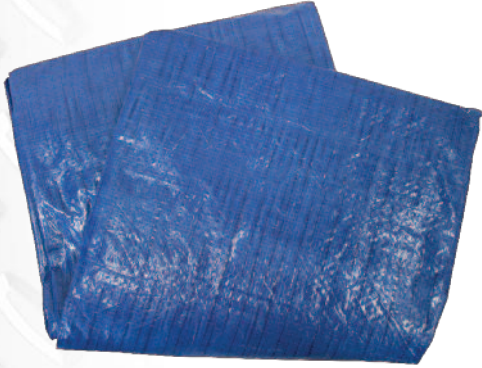


350030



Description	P/N	Case Qty	UPC
REMOVABLE TRAILER JACK FOOT PLATE	280010	2	0 12947 00561 1
LOCKING PIN ASSEMBLY	320015	6	0 12947 00564 2
SWIVEL CASTER WHEEL ASSEMBLY	280063	4	0 12947 00531 4
FLANGE MOUNT SWIVEL PLATE	280606	6	0 12947 00569 7
TOP WIND TRAILER JACK CRANK	320057	6	0 12947 00565 9
GOOSENECK JACK HANDLE	GNHandle	1	0 12947 00827 8
SWIVEL MOUNT SNAP RING	200133	6	0 12947 00563 5
2" WELD ON JACK MOUNTING TUBE	350030	6	0 12947 00562 8

**BLUE POLY TARP**



Size	P/N	Case Qty	UPC
5x7 BLUE TARP	5X7	40	0 12947 09057 0
6X8 BLUE TARP	6X8	30	0 12947 09068 6
8X10 BLUE TARP	8X10	20	0 12947 09810 1
9X12 BLUE TARP	9X12	15	0 12947 09912 2
10X12 BLUE TARP	10X12	12	0 12947 09112 6
10X14 BLUE TARP	10X14	12	0 12947 09104 1
10X16 BLUE TARP	10X16	10	0 12947 09106 5
10X20 BLUE TARP	10X20	8	0 12947 09102 7
12X14 BLUE TARP	12X14	10	0 12947 09114 0
12X16 BLUE TARP	12X16	8	0 12947 09126 3
12X18 BLUE TARP	12X18	8	0 12947 01066 0
12X20 BLUE TARP	12X20	7	0 12947 09120 1
12X24 BLUE TARP	12X24	6	0 19247 09124 9
16X20 BLUE TARP	16X20	5	0 12947 09162 4
18X24 BLUE TARP	18X24	4	0 12947 09182 9
20X20 BLUE TARP	20X20	4	0 12947 09202 4
20X30 BLUE TARP	20X30	3	0 12947 09203 1
20X40 BLUE TARP	20X40	2	0 12947 09204 8
30X40 BLUE TARP	30X40	2	0 12947 09304 5
30X50 BLUE TARP	30X50	1	0 12947 09305 2
30X60 BLUE TARP	30X60	1	0 12947 09306 9

**SILVER/BLACK POLY TARP W/REINFORCED CORNERS**



Size	P/N	Case Qty	UPC
6X8 SILVER/BLACK TARP	6X8SB	15	0 12947 00236 8
8X10 SILVER/BLACK TARP	8X10SB	10	0 12947 00237 5
10X12 SILVER/BLACK TARP	10X12SB	6	0 12947 00238 2
12X16 SILVER/BLACK TARP	12X16SB	5	0 12947 00258 0
12X20 SILVER/BLACK TARP	12X20SB	2	0 12947 00240 5
12X24 SILVER/BLACK TARP	12X24SB	2	0 12947 00271 9
16X20 SILVER/BLACK TARP	16X20SB	2	0 12947 00241 2
18X24 SILVER/BLACK TARP	18X24SB	2	0 12947 00570 3
20X30 SILVER/BLACK TARP	20X30SB	2	0 12947 00243 6
20X40 SILVER/BLACK TARP	20X40SB	1	0 12947 00244 3

WARNING: Cancer and Reproductive Harm-  
www.P65Warnings.ca.gov







**MESH TARP**

Size	P/N	Case Qty	UPC
8X10 MESH TARP	MT810	8	0 12947 00968 8
10X12 MESH TARP	MT1012	5	0 12947 00969 5
10X16 MESH TARP	MT1016	3	0 12947 00970 1



**BROWN/GREEN TARP**


Size	P/N	Case Qty	UPC
8X10 BROWN/GREEN TARP	8X10BG	20	0 12947 00571 0
10X12 BROWN/GREEN TARP	10X12BG	12	0 12947 00572 7
10X16 BROWN/GREEN TARP	10X16BG	10	0 12947 00573 4



**CAMOUFLAGE TARP W/REINFORCED CORNERS**

Size	P/N	Case Qty	UPC
8x10 CAMOUFLAGE TARP	8X10CT	20	0 12947 00395 2
10x12 CAMOUFLAGE TARP	10X12CT	15	0 12947 01094 3
10x16 CAMOUFLAGE TARP	10X16CT	10	0 12947 00397 6
10x20 CAMOUFLAGE TARP	10X20CT	8	0 12947 00398 3
12X20 CAMOUFLAGE TARP	12X20CT	7	0 12947 01095 0

WARNING: Cancer and Reproductive Harm -  
www.P65Warnings.ca.gov.



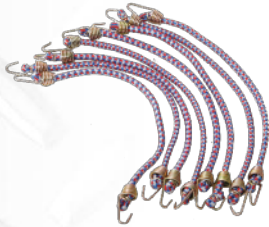
# SMV TARP STRAPS



Description	P/N	Case Qty	Weight	UPC
10" TARP STRAP EPDM	10	200	16 lbs	0 12947 00032 6
15" TARP STRAP EPDM	15	200	21 lbs	0 12947 00033 3
21" TARP STRAP EPDM	21	200	25 lbs	0 12947 00034 0
31" TARP STRAP EPDM	31	200	31 lbs	0 12947 00035 7
41" TARP STRAP EPDM	41	100	40 lbs	0 12947 00036 4
24" ADJ. TARP STRAP EPDM	24ADJ	100	30 lbs	0 12947 00235 1



Description	P/N	Case Qty	Weight	UPC
12" CANOPY TARP TIES	BCS12	60 (6 CLIP STRIPS OF 10)	18 lbs	0 12947 00445 4



Description	P/N	Case Qty	Weight	UPC
MINI BUNGEE	BCSM	144 (12 CLIP STRIPS OF 12)	20 lbs	0 12947 00447 8



Description	P/N	Case Qty	Weight	UPC
6"-48"ADJUSTABLE BUNGEE	BCS648	60 (6 CLIP STRIPS OF 10)	25 lbs	0 12947 00446 1



WARNING: Cancer and Reproductive Harm  
www.P65Warnings.ca.gov





# SMVBUNGEE CORDS



Description	P/N	Case Qty	Thickness	Weight/lbs	UPC
16" STANDARD BUNGEE	SBC16	25	9MM	4.75	0 12947 00439 3
24" STANDARD BUNGEE	SBC24	25	9MM	5.2	0 12947 00438 6
32" STANDARD BUNGEE	SBC32	25	9MM	6.3	0 12947 00437 9
40" STANDARD BUNGEE	SBC40	25	9MM	6.75	0 12947 00436 2
48" STANDARD BUNGEE	SBC48	25	9MM	7.175	0 12947 00435 5



Description	P/N	Case Qty	Thickness	Weight/lbs	UPC
16" HEAVY DUTY BUNGEE	HBC16	25	10MM	6.075	0 12947 00444 7
24" HEAVY DUTY BUNGEE	HBC24	25	10MM	6.95	0 12947 00443 0
32" HEAVY DUTY BUNGEE	HBC32	25	10MM	7.6235	0 12947 00442 3
48" HEAVY DUTY BUNGEE	HBC48	25	10MM	9.3	0 12947 00440 9



Description	P/N	Case Qty	Thickness	Weight/lbs	UPC
12 PC HD BUNGEE ASST	BAH12	25	10MM	6.075	0 12947 00450 8
24 PC HD BUNGEE ASST	BAH24	25	10MM	7.6235	0 12947 00451 5



Description	P/N	Case Qty	Thickness	Weight/lbs	UPC
12 PC BUNGEE ASST	BAS12	25	10MM	6.95	0 12947 00448 5
25 PC BUNGEE ASST	BAS25	25	10MM	6.95	0 12947 00449 2



4 ft In-Store Display



**GAL-28**



**GBLS-28**



**GLWHS-22**



**GBL-30**



**GSHS-25**



**GRAL-30**



**GTAL-39**



**GBLSP-2PC**



**GAP-8**



**GBPS-CCS**



**GRAP-8**



**GRBP-8**



**GBPP-8.5**



**GAP-8SC**



**GRBL-30**



**GTBP-39**

Description	P/N	Handle	Grips	Blade	UPC
28" ANVIL LOPPER	GAL-28	WOOD	WOOD	1050 MID CARBON STEEL	0 12947 00410 2
28" BYPASS LOPPER SHEAR	GBLS-28	WOOD	WOOD	1050 MID CARBON STEEL	0 12947 00416 4
22" HEDGE SHEARS	GLWHS-22	WOOD	WOOD	1050 MID CARBON STEEL	0 12947 00430 0
30" ANVIL LOPPER SHEAR	GBL-30	OVAL TUBED STEEL	PVC	1050 MID CARBON STEEL	0 12947 00413 3
25" SERRATED HEDGE SHEAR	GSHS-25	OVAL TUBED STEEL	PVC	1050 MID CARBON STEEL	0 12947 00421 8
30.25" RATCHET ANVIL LOPPER	GRAL-30	OVAL TUBED STEEL	PVC	1050 MID CARBON STEEL	0 12947 00571 8
27.25"-39" TELESCOPIC ANVIL LOPPER	GTAL-39	ROUND ALUMINUM	TPR	1050 MID CARBON STEEL	0 12947 00496 6
28" BYPASS LOPPING SHEAR 8.5" BYPASS PRUNER COMBO SET	GBLSP-2PC	OVAL TUBED/ DIE-CAST ALUMINUM	PVC/ VINYL	CARBON STEEL	0 12947 00409 6
8" ANVIL PRUNER	GAP-8	DIE-CAST ALUMINUM	PVC	CARBON STEEL	0 12947 00432 2
8.25" BYPASS PRUNER	GBPS-CCS	DIE-CAST ALUMINUM	PVC	SK5 HIGH CARBON STEEL	0 12947 00417 1
8 1/4" Rat Anvil Pruner	GRAP-8	DIE-CAST ALUMINUM	PVC	SK5 HIGH CARBON STEEL	0 12947 00522 2
8 1/4" Rat B/P Pruner	GRBP-8	OVAL TUBED	PVC	SK5 HIGH CARBON STEEL	0 12947 00521 5
8 1/2" B/P Pruner	GBPP-8.5	OVAL TUBED	PVC	SK5 HIGH CARBON STEEL	0 12947 00424 9
8" Anvil Pruner	GAP-8SC	OVAL TUBED	PVC	SK5 HIGH CARBON STEEL	0 12947 00425 6
30" Rat B/P Lopper	GRBL-30	OVAL TUBED	PVC	1050 MID CARBON STEEL	0 12947 00518 5
26-39" Tele Bypass	GTBP-39	ROUND ALUMINUM	TPR	1050 MID CARBON STEEL	0 12947 00497 3
30" Bypass Leverage Lopping Shear	GLBL-30	OVAL TUBED	PVC	1050 MID CARBON STEEL	0 12947 00420 1

WARNING: Cancer and Reproductive Harm-  
www.P65Warnings.ca.gov.







GTP-T10



GSB-12.5



GBS-21



GBS-24



GPS-10



GPS-12



SHGTRANSP



SHGT3TFH



SHGCULTIV



SHGTROWEL



GFP-2



GFP-R

Description	P/N	Handle	Grips	Blade	UPC
Tree Pruner	GTP-T10	10' FIBERGLASS	FIBER	13" SAW BLADE	0 12947 00449 7
12 1/2" Grass Shear	GSB-12.5	ZINC	VINYL	420 SS	0 12947 00428 7
21" Bow Saw	GBS-21	STEEL TUBE	VINYL	SK5 STEEL	0 12947 00520 8
24" Bow Saw	GBS-24	STEEL TUBE	VINYL	SK5 STEEL	0 12947 00519 2
Protooth Pruning Saw	GPS-10	MAT VINYL	CUSHION	SK5 STEEL 10"	0 12947 00516 1
12" Saw w/Scabbard	GPS-12	MAT VINYL	CUSHION	SK5 STEEL 12"	0 12947 00515 4
S/H-Hd Transplanter	SHGTRANSP	MAT VINYL	CUSHION	SK5 STEEL	0 12947 00795 0
12X14 BLUE TARP	SHGT3TFH	MAT VINYL	CUSHION	SK5 STEEL	0 12947 09114 0
S/H Cultivator	SHGCULTIV	MAT VINYL	CUSHION	SK5 STEEL	0 12947 00796 7
S/H Trowel	SHGTROWEL	PLASTIC/PP	TPR	CARBON STEEL	0 12947 00797 4
Fruit Picker	GFP-2	2 PC WOODEN	WOOD	N/A	0 12947 00500 0
Retractable Fruit Picker	GFP-R	TELESCOPIC ALUM	N/A	N/A	0 12947 00912 1



**WARNING:** Cancer and Reproductive Harm-  
www.P65Warnings.ca.gov.



# Decorative Backyard Windmills



## 4.5 Foot



**45A**

4.5' Silver/Red Windmill  
1 per case • 14 lbs  
0 12947 00392 1

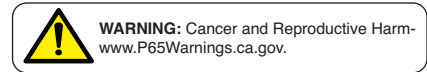


**45A-G**

4.5' Green/Yellow Windmill  
1 per case • 14 lbs  
0 12947 00493 5

### Quality Parts & Construction

- Indicates Wind Speed & Direction •
- Galvanized Steel with Weather Resistant Protection •
- Easy to Assemble •
- Ideal for Planters, Yards, & Gardens •
- Anchor/Yard Stakes Included •



## 8 Foot



**48A**

8' Silver/Red Windmill  
1 per case • 32 lbs  
0 12947 01001 1



**48A-R**

8' Red/White Windmill  
1 per case • 32 lbs  
0 12947 00401 0



**48A-B**

8' Black/Gold Windmill  
1 per case • 32 lbs  
0 12947 00400 3



**48A-F**

8' American Flag  
1 per case • 32 lbs  
0 12947 01114 8



**48A-G**

8' Green/Yellow Windmill  
1 per case • 32 lbs  
0 12947 00457 7

**SPECIAL ORDERS AVAILABLE CALL 712-366-8040**

**MANUFACTURED BY:**

**SMV Industries Inc. • PO BOX 1094 • Council Bluffs, IA 51502 • WWW.SMVINDUSTRIES.COM**









51213 195th Street  
Council Bluffs, IA 51503  
712-366-8040  
1-800-831-3308  
smvindcb@gmail.com  
smvindustries.com



**WARNING:** Cancer and Reproductive Harm-  
[www.P65Warnings.ca.gov](http://www.P65Warnings.ca.gov)