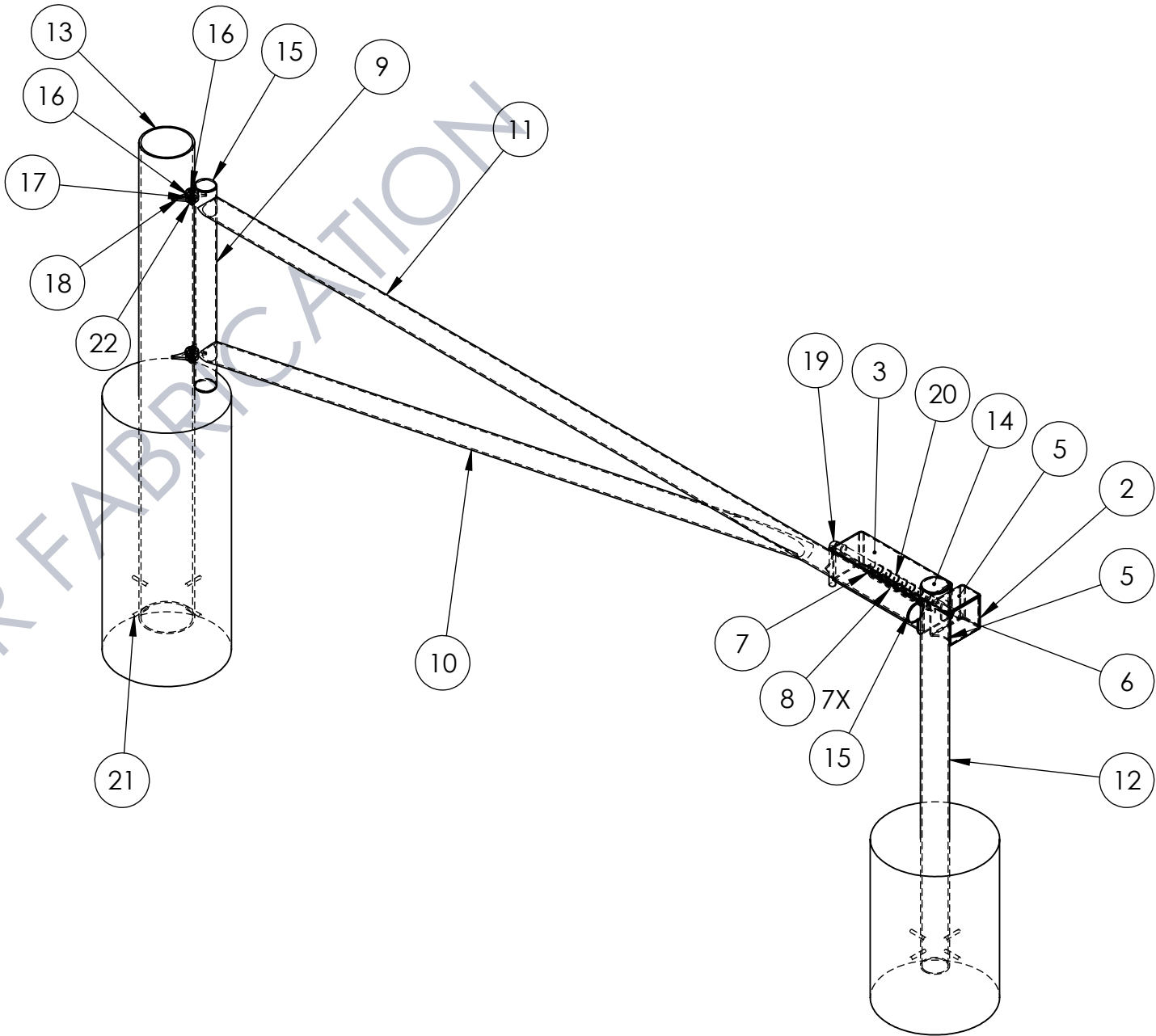
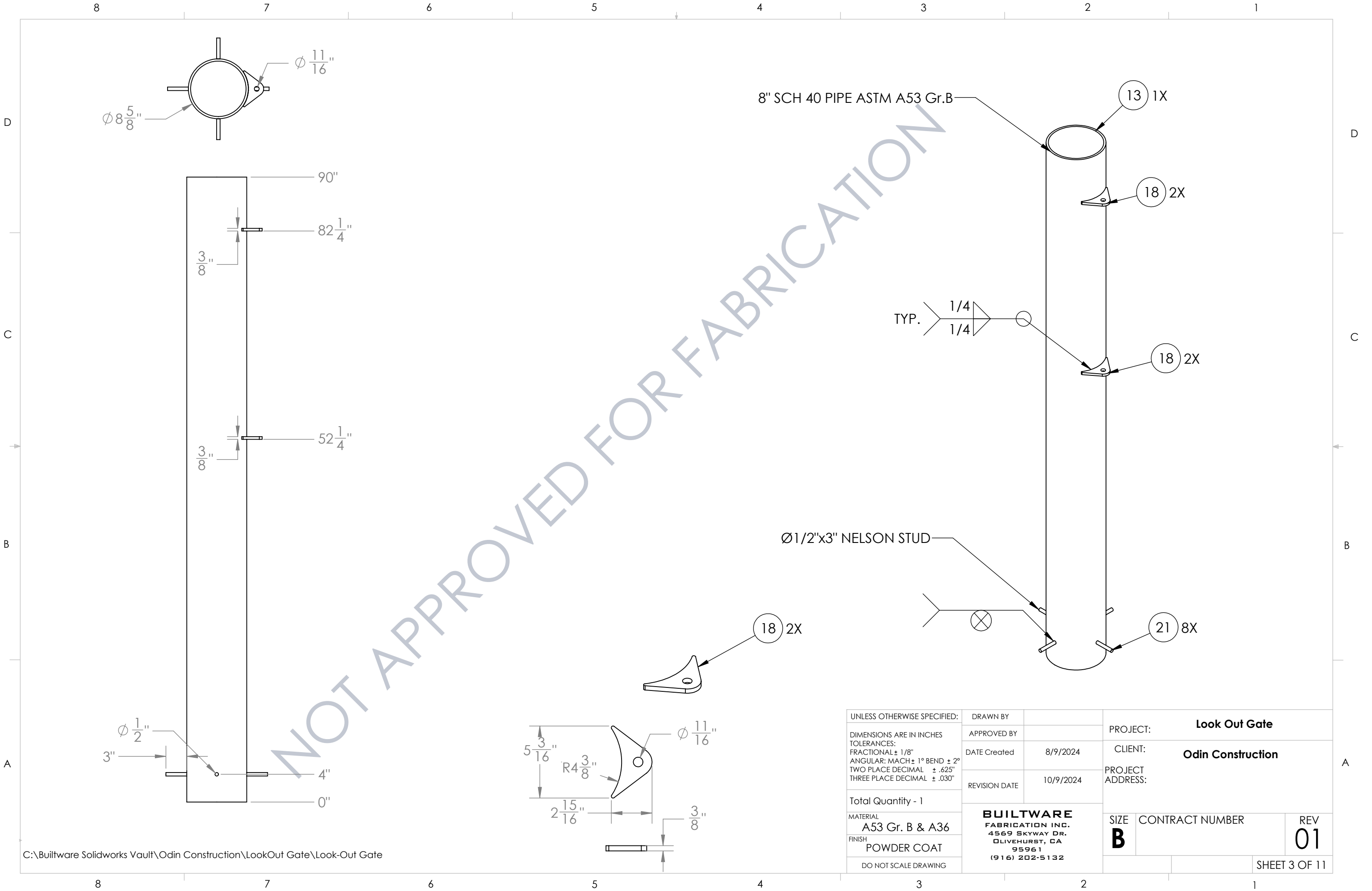


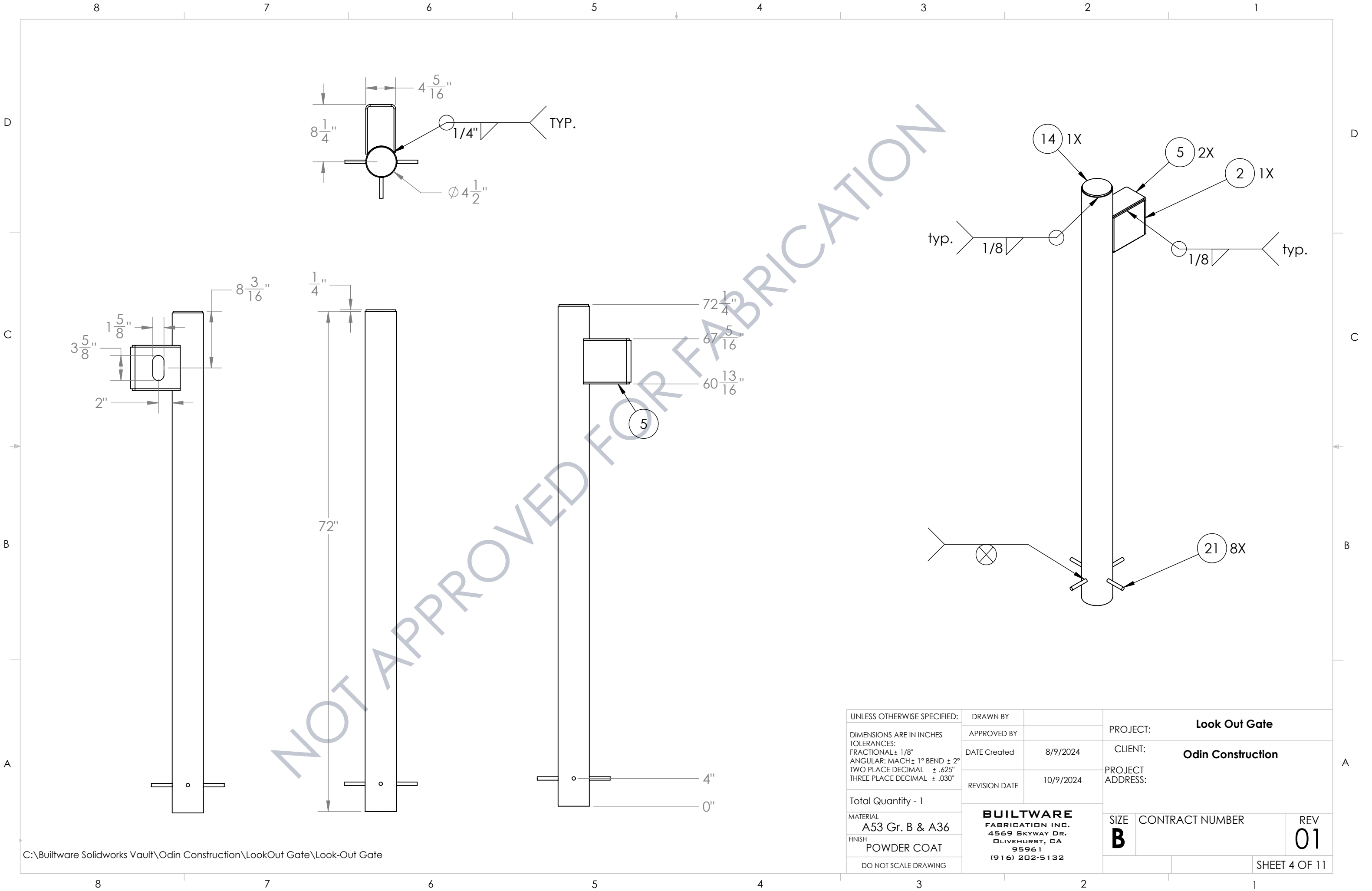
UNLESS OTHERWISE SPECIFIED:  DIMENSIONS ARE IN INCHES TOLERANCES: FRACTIONAL $\pm 1/8"$ ANGULAR: MACH $\pm 1^\circ$ BEND $\pm 2^\circ$ TWO PLACE DECIMAL $\pm .025"$ THREE PLACE DECIMAL $\pm .030"$  Total Quantity - 1  MATERIAL A53 Gr. B & A36  FINISH POWDER COAT  DO NOT SCALE DRAWING	DRAWN BY	PROJECT: <b>Look Out Gate</b>		
	APPROVED BY	CLIENT: <b>Odin Construction</b>		
	DATE Created	8/9/2024	PROJECT ADDRESS:	
	REVISION DATE	10/9/2024		
	<b>BUILTWARE</b> FABRICATION INC. 4569 SKYWAY DR. OLIVEHURST, CA 95961 (916) 202-5132		SIZE <b>B</b>	CONTRACT NUMBER
				REV <b>01</b>
				SHEET 1 OF 11

BOM Table						
ITEM NO.	PARTS PER UNIT	DESCRIPTION	LENGTH	PLATE LENGTH	PLATE Width	PLATE THICKNESS
1	1	1/4" ASTM A36				
2	1	1/4" ASTM A36				
3	1	1/4" ASTM A36				
4	1	1/4" ASTM A36				
5	2	1/4" ASTM A36				
6	1	1/4" PL, END LOCK TAB, ASTM A36				
7	1	1/4" PL, END LOCK TAB, ASTM A36				
8	7	1/4" PL, LOCK TABS, ASTM A36				
9	1	3" SCH 40 PIPE ASTM A53 Gr.B	37 3/4"			
10	1	3" SCH 40 PIPE ASTM A53 Gr.B	134"			
11	1	3" SCH 40 PIPE ASTM A53 Gr.B	155 1/8"			
12	1	4" SCH 40 PIPE, ASTM A53 Gr.B	72"			
13	1	8" SCH 40 PIPE ASTM A53 Gr.B	90"			
14	1	ASTM A36		4 1/4"	4 1/4"	1/4"
15	3	ASTM A36		3 1/4"	3 1/4"	1/4"
16	6	ASTM A36		2"	2"	1/8"
17	2	ASTM A36		2 15/16"	2 3/4"	3/8"
18	2	ASTM A36		5 3/16"	2 15/16"	3/8"
19	1	Ø1" LOCK HANDLE, ASTM A36				
20	7	Ø1.0625x.120x1" Locking Tab				
21	8	Ø1/2"x3" NELSON STUD	3"			
22	2	Ø5/8"-11 NUT, ASTM A307				
23	2	Ø5/8"-11 x 2-1/4" BOLT, ASTM A307				

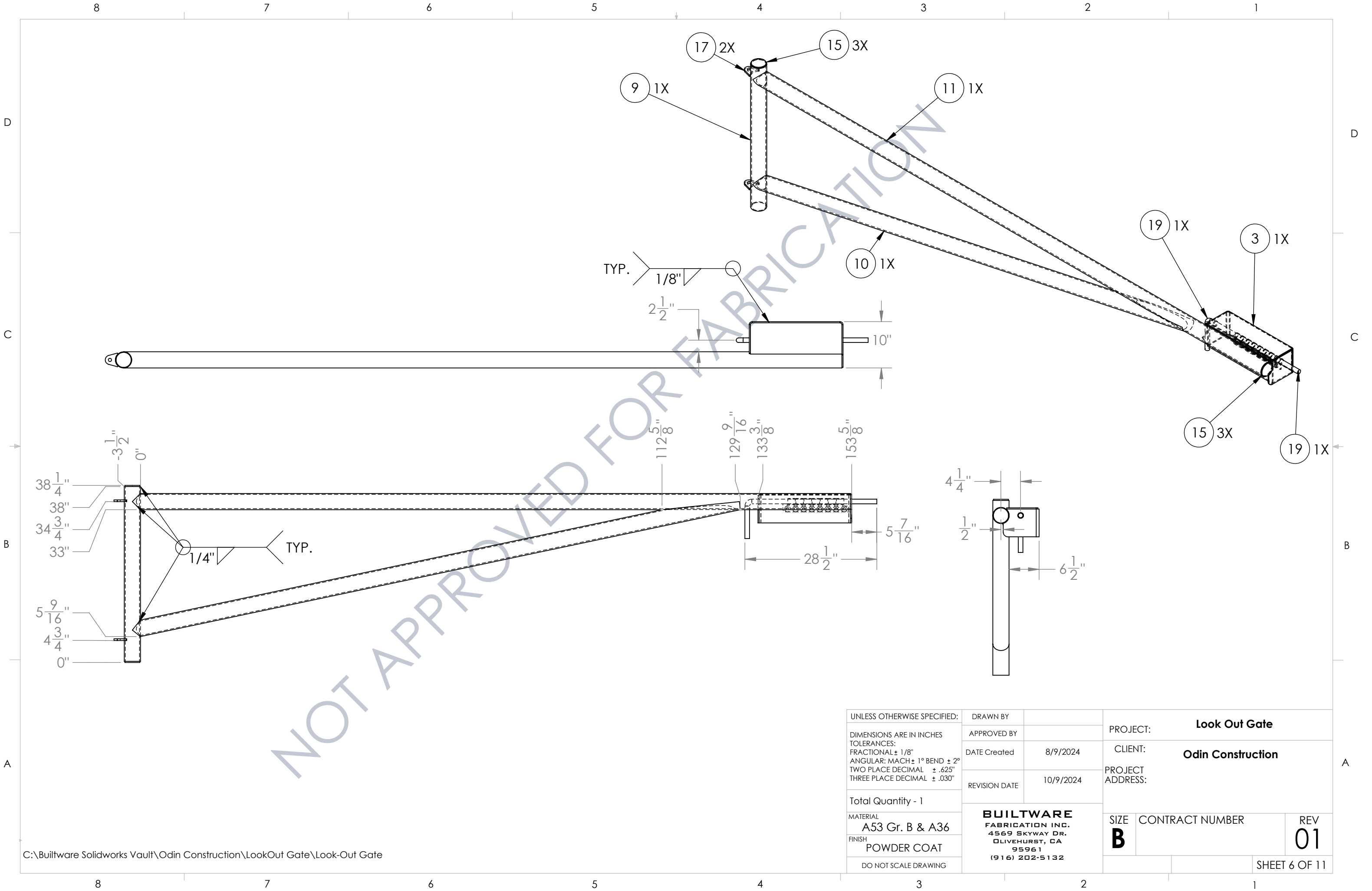


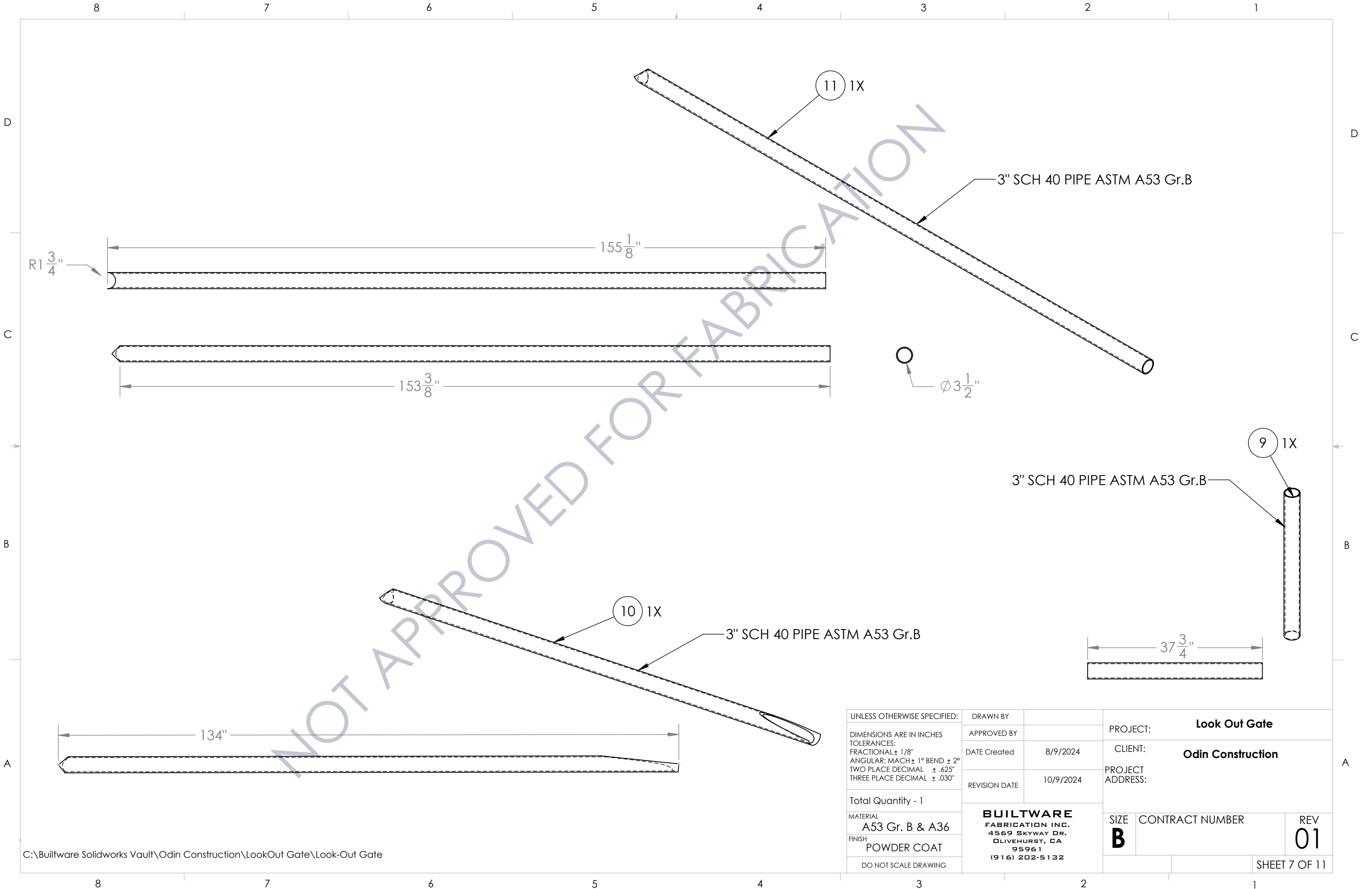
UNLESS OTHERWISE SPECIFIED:  DIMENSIONS ARE IN INCHES TOLERANCES: FRACTIONAL ± 1/8" ANGULAR: MACH ± 1° BEND ± 2° TWO PLACE DECIMAL    ± .625" THREE PLACE DECIMAL   ± .030"	DRAWN BY	PROJECT: <b>Look Out Gate</b>			
	APPROVED BY				
	DATE Created	8/9/2024	CLIENT: <b>Odin Construction</b>		
	REVISION DATE	10/9/2024	PROJECT ADDRESS:		
Total Quantity - 1	<b>BUILTWARE</b> FABRICATION INC. 4569 SKYWAY DR. OLIVEHURST, CA 95961 (916) 202-5132		SIZE	CONTRACT NUMBER	REV
MATERIAL A53 Gr. B & A36			<b>B</b>		<b>01</b>
FINISH POWDER COAT					
DO NOT SCALE DRAWING					
			SHEET 2 OF 11		



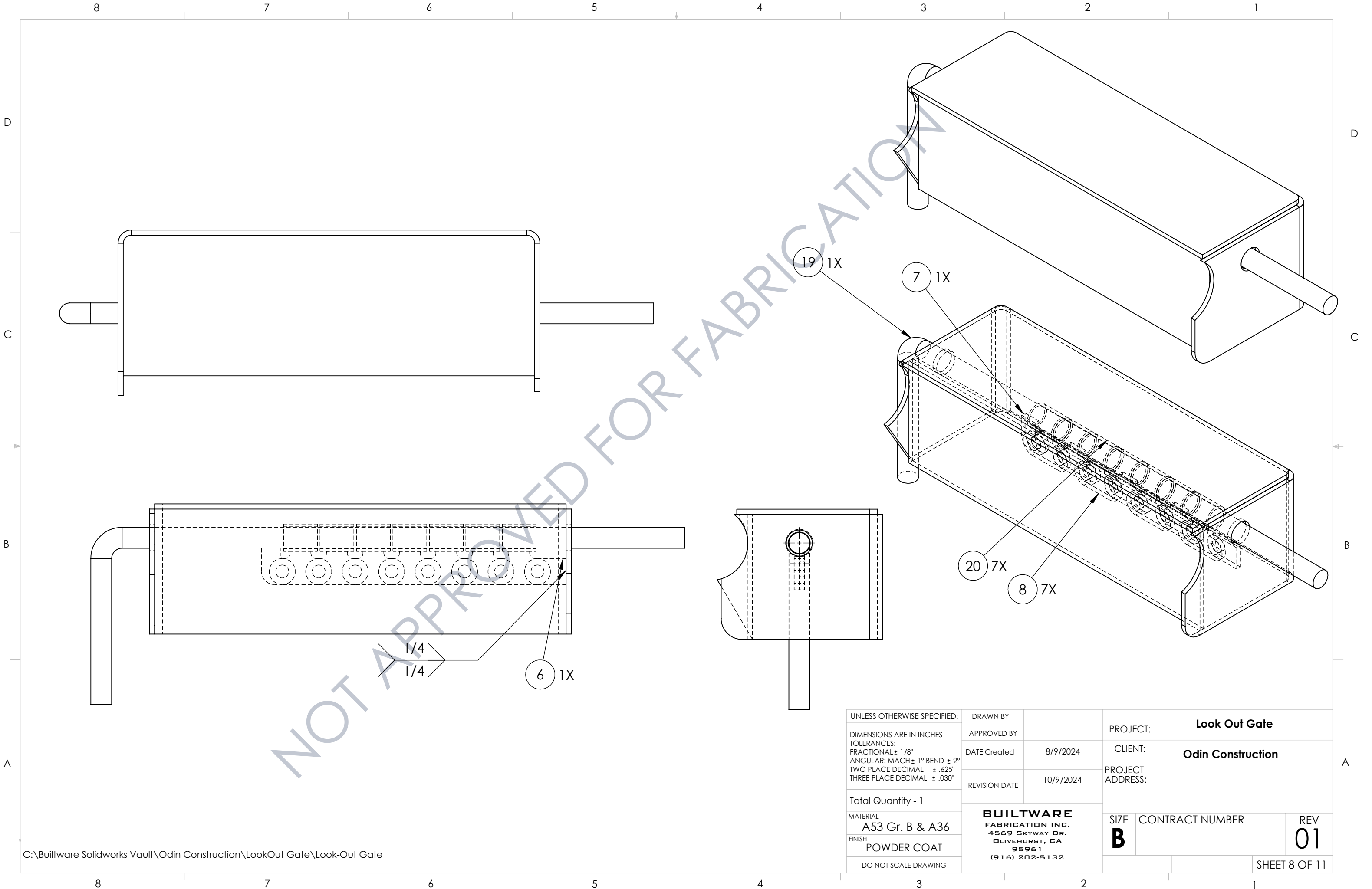








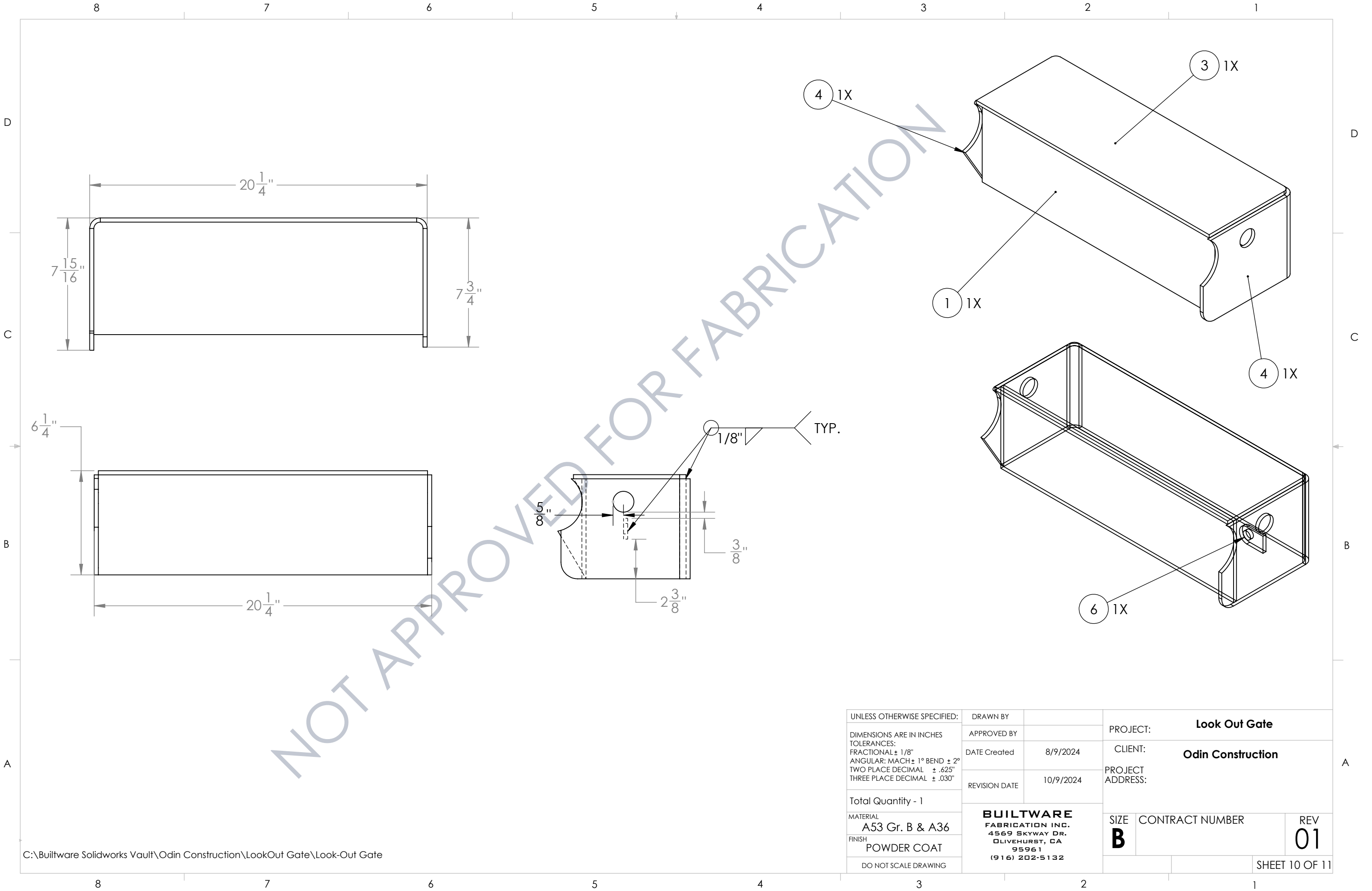
UNLESS OTHERWISE SPECIFIED:  DIMENSIONS ARE IN INCHES TOLERANCES: FRACTIONAL ± 1/8" ANGULAR: MACH ± 1° BEND ± 2° TWO PLACE DECIMAL    ± .025" THREE PLACE DECIMAL   ± .030"	DRAWN BY	PROJECT: Look Out Gate			
	APPROVED BY	CLIENT: Odin Construction			
	DATE Created	8/9/2024	PROJECT ADDRESS:		
	REVISION DATE	10/9/2024			
Total Quantity - 1	<b>BUILTWARE</b> FABRICATION INC. 4569 SKYWAY DR. OLIVEHURST, CA 95961 (916) 202-5132		SIZE	CONTRACT NUMBER	REV
MATERIAL A53 Gr. B & A36			<b>B</b>		01
FINISH POWDER COAT					
DO NOT SCALE DRAWING					
			SHEET 7 OF 11		



NOT APPROVED FOR FABRICATION

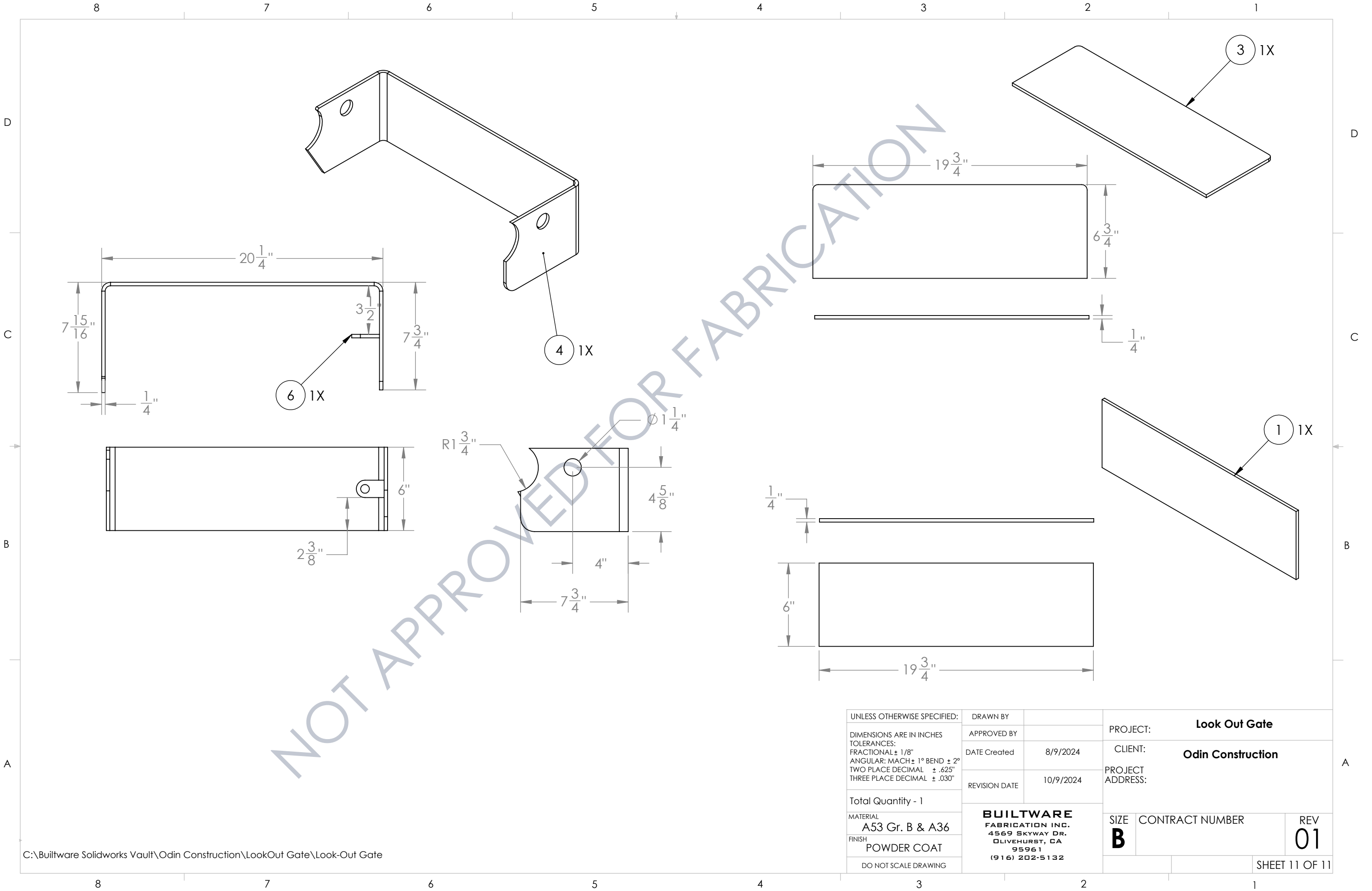
UNLESS OTHERWISE SPECIFIED:  DIMENSIONS ARE IN INCHES TOLERANCES: FRACTIONAL ± 1/8" ANGULAR: MACH ± 1° BEND ± 2° TWO PLACE DECIMAL    ± .625" THREE PLACE DECIMAL   ± .030"	DRAWN BY	PROJECT: <b>Look Out Gate</b>			
	APPROVED BY	CLIENT: <b>Odin Construction</b>			
	DATE Created	8/9/2024	PROJECT ADDRESS:		
	REVISION DATE	10/9/2024			
Total Quantity - 1	<b>BUILTWARE</b> FABRICATION INC. 4569 SKYWAY DR. OLIVEHURST, CA 95961 (916) 202-5132		SIZE	CONTRACT NUMBER	REV
MATERIAL <b>A53 Gr. B &amp; A36</b>			<b>B</b>		<b>01</b>
FINISH <b>POWDER COAT</b>					
DO NOT SCALE DRAWING					
SHEET 8 OF 11					





C:\Builtware Solidworks Vault\Odin Construction\LookOut Gate\Look-Out Gate

UNLESS OTHERWISE SPECIFIED:  DIMENSIONS ARE IN INCHES TOLERANCES: FRACTIONAL ± 1/8" ANGULAR: MACH ± 1° BEND ± 2° TWO PLACE DECIMAL ± .625" THREE PLACE DECIMAL ± .030"	DRAWN BY	PROJECT: <b>Look Out Gate</b>		
	APPROVED BY			
	DATE Created	8/9/2024	CLIENT: <b>Odin Construction</b>	
	REVISION DATE	10/9/2024		
Total Quantity - 1	<b>BUILTWARE</b> FABRICATION INC. 4569 SKYWAY DR. OLIVEHURST, CA 95961 (916) 202-5132		PROJECT ADDRESS:	
MATERIAL A53 Gr. B & A36			SIZE <b>B</b>	CONTRACT NUMBER
FINISH POWDER COAT			REV <b>01</b>	
DO NOT SCALE DRAWING			SHEET 10 OF 11	



UNLESS OTHERWISE SPECIFIED:  DIMENSIONS ARE IN INCHES TOLERANCES: FRACTIONAL ± 1/8" ANGULAR: MACH ± 1° BEND ± 2° TWO PLACE DECIMAL ± .025" THREE PLACE DECIMAL ± .030"	DRAWN BY	PROJECT: <b>Look Out Gate</b>		
	APPROVED BY	CLIENT: <b>Odin Construction</b>		
	DATE Created	8/9/2024	PROJECT ADDRESS:	
	REVISION DATE	10/9/2024		
Total Quantity - 1	<b>BUILTWARE</b> FABRICATION INC. 4569 SKYWAY DR. OLIVEHURST, CA 95961 (916) 202-5132		SIZE	CONTRACT NUMBER
MATERIAL <b>A53 Gr. B &amp; A36</b>			<b>B</b>	
FINISH <b>POWDER COAT</b>				REV <b>01</b>
DO NOT SCALE DRAWING				