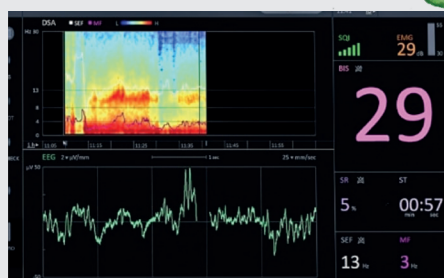
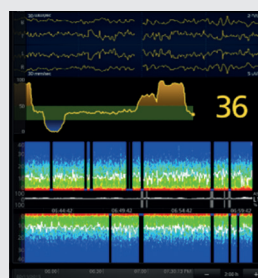


# SEDSIM

4-channel EEG  
Simulator for  
Anesthesia.



Patent Pending

Master Anesthetic Brain Monitoring  
with real-time EEG simulation.



+1 410 7393223

jfernandez@smarttiva.com

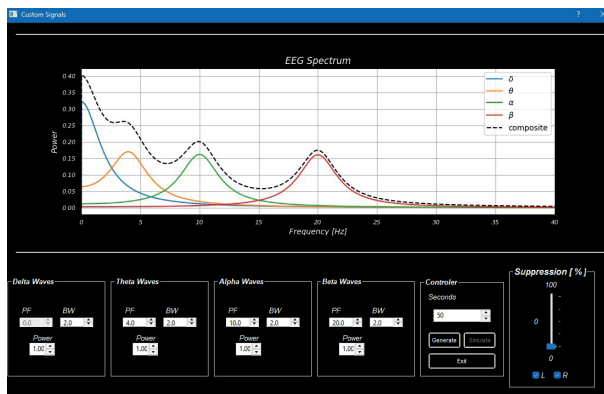
www.smarttiva.com

- **SedSim** is a 4-channel EEG simulator designed for **anesthesia training and education**.
- Allows connection to real brain monitoring sensors for **realistic simulation**.
- Users can tweak EEG waveforms, adjust suppression rates, control patient depth in real time, recreate key clinical cases or simulate anesthetic drug doses through PK/PD models, **providing a hands-on experience for anesthesia Brain monitoring training**.

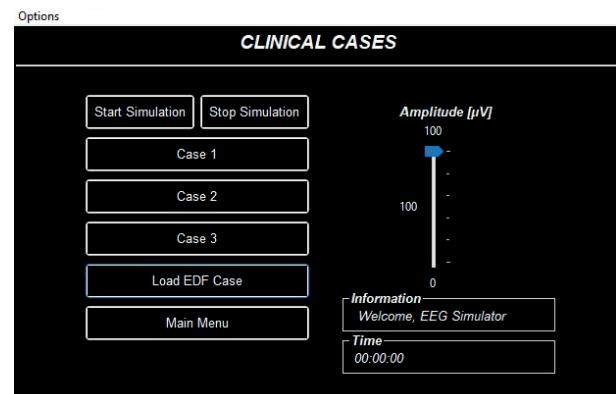


**Compatible with most  
Brain Monitor sensors.**

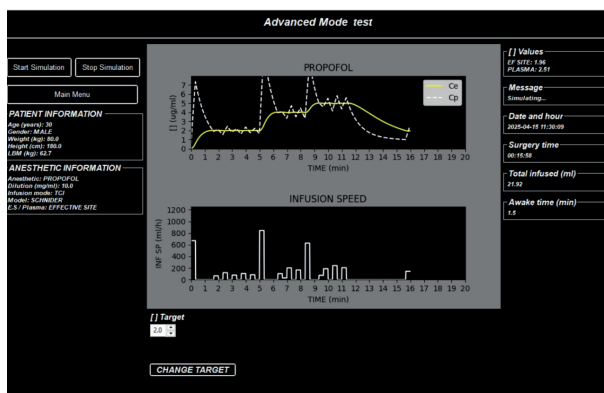
BIS Vista®  
Sedline®  
Entropy®



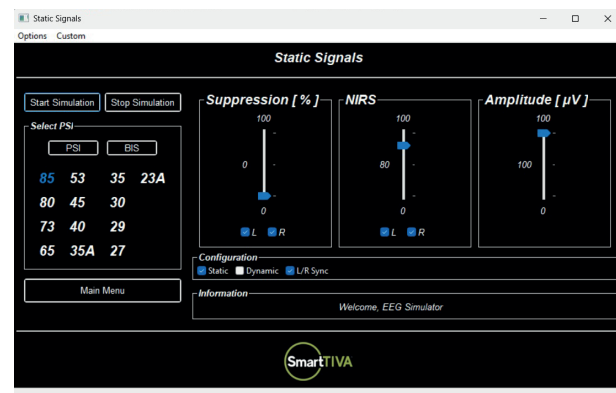
- Create your own Delta, Theta, Alpha and Beta waves.



- Reproduce 20 min cases or load your own EDF.



- Simulate pharmacokinetics and their effects on EEG.



- Load stable DSA and add suppression rates or change amplitude.