

Brad S. Billings
GRAND SECRETARY
PO BOX 446
WACO, TEXAS 76703



BUS: (254) 753-7395
FAX: (254) 753-2944
gs@grandsecretaryoftx.org

GRAND SECRETARY'S MONTHLY COMMUNICATION SEPTEMBER 2025

SECRETARIES and my Brothers All – Welcome to the September edition of the Grand Secretary's Newsletter. This edition includes the following:

- Grand Master's Request
- Grand Secretary's Office - Resolutions, Annual Forms and Secretary Schools
- Grand Treasurer – 990s
- Product of the Month: Candidate Coin
- Golden Ticket Contest – Please share!
- Statistics –Achieving Growth – Zachary Haston
- Monthly Law Reading – Suspensions for Plural Members
- Lodge Spotlight – Montgomery Lodge No. 25 – Mustaches, Wigs, and Masonry
- and more.....

PLEASE COMMUNICATE THIS INFORMATION TO YOUR MEMBERS, AS APPROPRIATE. I recommend you print this communication and bring it to your stated meeting for discussion. This communication is automatically provided electronically to all lodges with the capability to use the Grandview system. Individual Master Masons of The Grand Lodge of Texas can sign up by contacting the Grand Secretary's Office at (254) 753-7395 or gs@grandsecretaryoftx.org, or by registering your membership through [the Member Portal](#).

CANDIDATE COINS



If your Lodge does not already present a coin to Entered Apprentices, consider the Grand Lodge Candidate Coin. These coins may be given to a newly raised Master Mason, fully engraved, or presented to a newly initiated Entered Apprentice with the promise that—upon attaining their Master Mason degree—the Lodge will have the coin engraved with all the pertinent information.



The coins are available at **\$3.75 each or \$30 for a set of 10**. They serve as a meaningful keepsake and a constant reminder of the journey a Brother has begun, while pointing to the future Light to be obtained.

[Candidate Coins – The Grand Lodge of Texas](#)

PLEASE READ

GRAND MASTER'S REQUEST FOR INFORMATION

Brethren,

This request for information was global in nature and not intended to exclude any type of Law Enforcement Officer that is a Master Mason in the State of Texas. If you serve or served in any capacity of Law Enforcement, please submit the information on the survey. I sincerely apologize for any misunderstanding concerning this email.

In the history of the Grand Lodge of Texas, many of our esteemed brethren also served in law enforcement and the judiciary. Men such as Texas Ranger, Frank Hamer; Watergate prosecutor Leon Jaworski; and Texas Supreme Court Chief Justice John Hill. The Grand Lodge has undertaken a research project to determine how many of our current members are similarly serving. If you are currently serving or retired as a Chief of Police; a County Sheriff; Texas Ranger; a District or County Attorney; or a Judge (municipal judge; Justice of the Peace; county court; county court at law; district court; court of appeals; or supreme court) please let us know.

Name:

Lodge No.:

Department of Service:

This can be submitted by following [THIS LINK](#)

RESOLUTIONS

Please note: These are NOT vetted by the Jurisprudence Committee or in final form or in the final order. They are noted here simply to ensure that every Resolution that was properly submitted is accounted for. If you submitted a Resolution that is not noted below, please send me an email at GS@GrandSecretaryoftx.org before September 15th.

- | | |
|---|---|
| 1 – Duty – Golden Trowel | 18 – Wiener – Burden on prosecution |
| 2 – Duty – Background checks | 19 – Neeley – Receiving in EA/FC lodge |
| 3 – Townsend – Assistance Fund | 20 – Siems – Time of Elections |
| 4 – Townsend – Assistance Fund Trustees | 21 – Siems – Qualification of Officers |
| 5 – Wise – Assistance disbursement | 22 – Summers – Elections |
| 6 – Wise – Youth Foundation giving | 23 – Newberry – Electioneering |
| 7 - Billings – Form revisions | 24 – Williams – Ending Automatic Reinstatement |
| 8 – Anderson – Charitable report | 25 – Garrett – Deferred Adjudication |
| 9 – Holder – AV committee | 26 – Gray –Masonic disciplinary violation |
| 10 - Enderli – Committee on Technology | 27 – Nigro – Time Limit on Preferring Allegations |
| 11 – Rumsey – Photo Committee | 28 – Nigro – GM Decisions |
| 12 – Rumsey – Temporary Committees | 29 – Maddox – Adding Skull to Art. 273 |
| 13 – Ross - P&P and JP Committees | 30 – Maddox - Work Day on a Sunday |
| 14 – Ross – Restoring Charters | 31 – Parsons – Leases |
| 15 – Jason Parker – Cornerstone | 32 -McGettrick – Knights of Pythias |
| 16 – Corley – Digital demised lodge records | 33 – Upton – Odd Fellows |
| 17 – Sisemore – Masonic charges timeline | |

REMINDER FROM THE GRAND TREASURER TO ALL LODGES

Every lodge should file a tax return with the IRS on or before November 15th each year. There are 3 possible returns available depending on the numbers for your lodge. To determine which form to use we checked with the Grand Lodge auditors JRBT, who also prepare our tax return. Their guidance is listed below. Please be aware that the 990-N is much shorter than the other 2 and is filed electronically with the IRS. You receive proof the IRS received the return as part of the process. Even though you are only required to file a 990-N you may choose to file a 990-EZ or a 990 depending on your circumstances. - **Rick Townsend**, Grand Treasurer

When it comes to question of which 990 to file, the IRS looks at the gross receipts first, and then the assets. As soon as an entity has \$50,001 in gross receipts, the IRS will look at the total assets of the organization to determine which filing is obligated. So, before you hit \$50,001 in gross receipts, the total assets of the organization are not relevant to determining which form to file. There is nothing wrong with filing a full form when you qualify for a 990-N, however, then 990-N is a much simpler submission and can be done online. Here are the thresholds as stated by the IRS:

990-N

Income is equal to or less than \$50,000

There is no asset threshold for a 990-N

990-EZ

Income is more than \$50,000, but less than \$200,000

AND Total assets of \$500,000 or less

990

Income is equal to or more than \$200,000

OR Total assets are \$500,000 or more

This link provides some good guidance from the IRS on who can file a 990-N [Form 990 series which forms do exempt organizations file filing phase in | Internal Revenue Service](#). As always, if you have any questions on this, or if any of the lodges have any questions on this, we are happy to help.

- **Kelsie Johnson**, CPA, Senior Manager, JRBT

FILING PROCESSES FOR ANNUAL FORMS WITH GRAND LODGE

Three forms must be filed with the Grand Secretary's Office soon after the Masonic Year begins, they are the Annual Returns, Form 71, and the 990 Confirmation. The processes for filing these forms are below:

Annual Returns – This form must be printed and signed and sealed. It must also contain a check for the annual per capita and fees and can ONLY be mailed to the Grand Secretary's Office. It is due to the Grand Secretary's Office, no later than August 15th.

Form 71 – The preferred way to file this form is to upload it to the File Vault on Grand View in the 'Other Folder'. Alternative, you can email it to the Grand Secretary's office or mail it to the Grand Secretary's Office.

Form 990 Confirmation – The preferred way to file this form is to upload it to the File Vault on Grand View in the 990 folder. Alternative, you can email or mail it to the Grand Secretary's Office.

2026 SECRETARY SCHOOLS (SAVE THE DATE)

Waco: Saturday September 27th Grand Lodge Building at 9:00 A.M.

Dallas: Saturday October 18th James A Smith Lodge No. 395 at 2:00 P.M.

Houston: Saturday November 15th Gray Masonic Lodge No. 329 at 9:00 A.M.

Registration for all three Schools can be found here: [Grand Lodge Masonic Membership Manager 2.0](#)

Calling All Digital Creators, Meme Makers, Videographers, Artists & Writers:

Masonry Wants YOU! We are excited to announce the **Golden Ticket Contest**, where Masons like you can showcase your creativity and submit digital content to be used by Grand Lodges across the country! Not only will your work help inspire the next generation of Masons to join our fraternity, but you'll also have the chance to win the **GRAND PRIZE: The Golden Ticket Tour**, planned for **August 2026!**

How to Participate:

- Create your best Masonic-themed digital content
- Submit your work through the contest website
- Inspire, compete, and possibly win the experience of a lifetime!



For full contest details and submission guidelines, please visit: <https://www.masonicgoldenticket.com/>

Join the movement. Share your talent. Help shape the future of Freemasonry!

TEXAS MIDDLE CHAMBER PROGRAM – Fall 2025

By popular demand, the *Middle Chamber Program* is returning to Texas! Hosted by **Lewisville Lodge**, this three-part series offers a deep dive into the Entered Apprentice, Fellow Craft, and Master Mason degrees, with guided instruction, course materials, meals, and rich esoteric discussion.

Schedule:

- **9/6 (9a–12p) – Free Intro Session**
- **9/27 (8a–3p) – Entered Apprentice**
- **10/25 (8a–3p) – Fellow Craft**
- **11/15 (8a–3p) – Master Mason**

Cost: \$300 for full program (sessions must be taken in order)

Contact **Kerr Morton** at kkerrmjr@gmail.com for more info. Registration opens soon!

READ PORTIONS APPROPRIATE FOR YOUR LODGE

BROTHERS OF THE HOUSTON/SOUTHEAST TEXAS AREA: **BRING THE GIFT OF LIFE TO YOUR COMMUNITY!**

We are excited to announce the “Gift of Life” blood drive program is expanding to the Greater Houston area and surrounding counties! We’re proud to partner with Gulf Coast Blood (GCB) to extend this life-saving initiative to our Lodges and our communities.

As a valued partner of the **Shriners Hospital in Galveston**, the GCB supplies blood to the hospital, helping to support the care of the patients. Additionally, donors in **November and December** have the opportunity to send Holiday Hugs cards to patients, with each card attached to cuddly teddy bears. The GCB will then distribute the bears at the hospitals they serve on behalf of the donors who generously gave blood.

This presents a powerful opportunity for your lodge to embody our commitment to charity and community. By hosting a blood drive, you directly contribute to saving lives and making a difference for those in need.

To be sure to be on the books to get cards and Teddy Bears to the kids at the Shrine Hospital [Book a Blood Drive Here](#) or email GCB at hostablooddrive@giveblood.org . **Together, let’s truly give the ‘Gift of Life’!**

TAKE TIME TO READ – Join the Effort!

All across our great state, schools are welcoming students back from summer vacation. The **Grand Lodge of Texas** is proud to continue its partnership with the **Scottish Rite Hospital** in the **Take Time to Read (TTTR)** Program, helping to inspire young readers and strengthen our communities.

Now is the perfect time to plan how **you and your Lodge** can participate in this impactful program. Currently, only about 100 Lodges are receiving TTTR updates and information—don’t let your Lodge miss out!

To ensure your Lodge is included, please contact the State TTTR Chairman:

📧 **Bruce Dalton** – bdd2208@gmail.com ☎ **817-223-1471**

Let’s work together to make literacy a priority in every Lodge across Texas!

LONE STAR APRON



ONLY ONE MONTH REMAINING to purchase the **Lone Star Apron**. The window is **open now through October 5th**. We currently have 51 orders. Our order earlier this year was a tremendous success, with **130 new Past Masters** now proudly wearing their aprons—and raising **over \$7,000** in support of the **Grand Lodge of Texas!** Don’t miss your chance to own this distinctive apron while supporting the work of our Grand Lodge. Order here:

[Texas Regulation Past Master's Apron - Silver – The Craftsman's Apron](#)

LODGE SPOTLIGHT:

MONTGOMERY LODGE NO. 25

Montgomery Lodge No. 25 continues to honor tradition while embracing moments of lighthearted brotherhood. From mustache surprises to their beloved annual Wig Night, the lodge shows how camaraderie and observant Masonry can go hand in hand. This year's Wig Night will be extra special, with the Grand Master of Texas making his second visit to the lodge.

"Mustaches, Wigs, and Masonry: A Lodge Bound by Brotherhood

On my first night as Worshipful Master of Montgomery Lodge No. 25, I thought I was ready for anything. But as I stood to open the Lodge, I looked up to see a room full of brothers—each wearing a fake mustache. My nerves disappeared instantly. That moment—hilarious yet heartfelt—captured everything I love about this fraternity: genuine friendship, shared purpose, and a brotherhood that knows how to laugh while honoring tradition.

Montgomery No. 25 has never been afraid to embrace the unexpected. Each October, we host one of our most cherished traditions: Wig Night. It began as a surprise, when all the officers gathered in the secretary's office dressed in black suits, white gloves, and powdered colonial-style wigs. Our Brother and Past Master Brian Beck, whose mother lodge is in England, scanned the room and realized none of his officers were present. Moments later, we processed in—wigs and all. His reaction said it all. Since then, Wig Night has become an annual highlight. Classical music plays, incense drifts through the room, and a guest speaker joins us as the night takes on the tone of observant Masonry. But at its heart, Wig Night is not about theatrics—it's about honoring a Brother, strengthening bonds, and sharing the kind of joy only true Masons understand.

This October, we will welcome the Grand Master of Texas for his second visit to our lodge—and I have a strong suspicion he'll be wearing his wig.

Whether sparked by a mustache or a wig, moments like these remind us that the true strength of Masonry is in the bonds we share."

— Chance E. Crane

Worshipful Master, Montgomery Lodge No. 25

I am grateful to share this story on behalf of Montgomery Lodge No. 25 and Worshipful Master Chance Crane. May it inspire other lodges to celebrate tradition with joy, creativity, and brotherly love. — **Mike Mistry, P.M.**



ACHIEVING GROWTH

Okay, that's a lofty title, and a paper on that is way longer than the 3 pages the Grand Secretary allows me here; therefore, I'll let others add their thoughts on the "how" while I talk about the numbers. Part of me thinks I shouldn't post such a number-heavy article as so many won't read it, but some will, and it's only one month. So, if you like to see some of the inner working of modeling, read on.

First off, I'll propose a basic equation for our year-over-year membership change:

$$\Delta \text{Memberships} = (\text{Initiations} - \text{Failure to Advance}) - \text{NPDs} - \text{Deaths} \pm \text{Other}$$

I'll talk about each in turn. First off is initiations. We still mostly have a word-of-mouth man-to-man "advertising" mechanism, and over the past 70 years, have averaged bringing in 2.1% initiates per member per

Figure 1. Lodge Initiations per Member per Year Since COVID

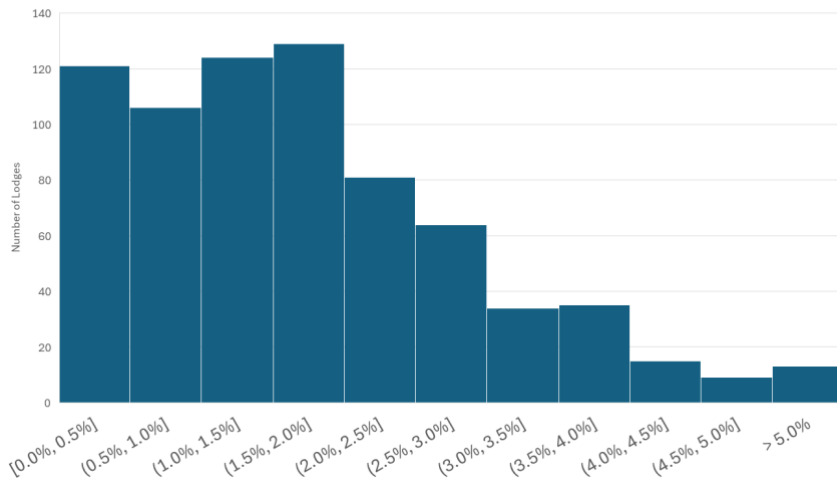
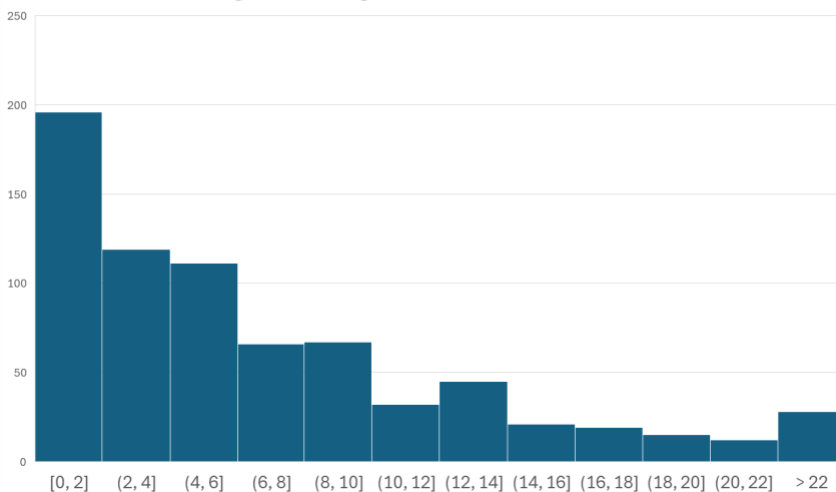


Figure 2. Lodge Initiations Since COVID

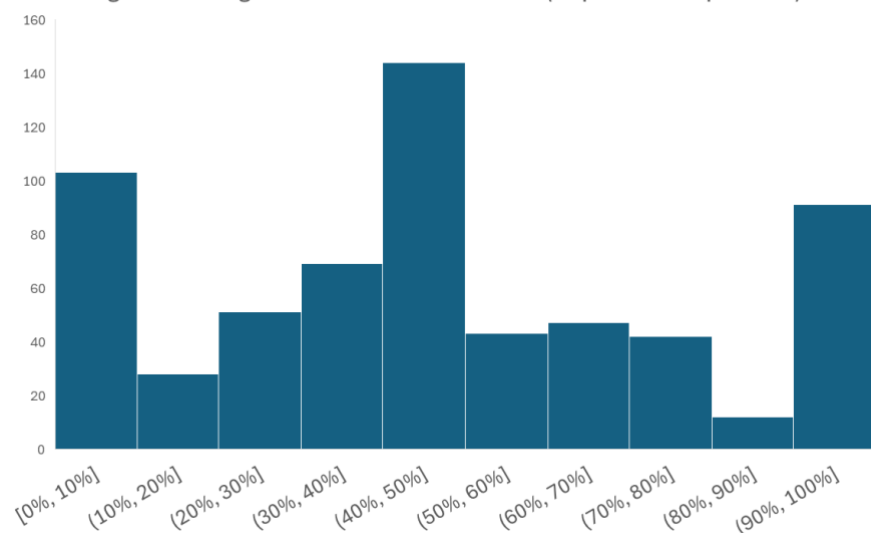


year. From 1965 to 2005 (a span of 40 years) we never varied from between 1.9% and 2.3% initiations per membership despite all the focus we had during that time on our falling membership. We did have a post-National Treasure bump to 3.5%, but it fell back, and since COVID we've actually been below 2% Statewide. Nationally, we've been on the lower side of a pretty tight $\pm 1\%$ band between States on this for the past couple of decades. Texas is on the lower side of that band due to both 1) \$500 endowments keeping people on our rolls that we haven't seen in decades, thus dividing by an artificially high number, and 2) Texas maintaining more lodges, by far, than anyone else. 64 of our lodges have not initiated a single person in the last 5 years, and that becomes 196 lodges if you want to include only initiating 1 or 2 people since COVID. If we exclude just the lodges initiating 0 to 2 over the past 5 years (the left band in Figure 2), then we're back above average compared both to other States and to our history. It should be noted that our long-term 2.1% initiations per member average, when you combine that with our current passing and retention rates, is insufficient

to overcome our death rate. The top quartile of our lodges, however, bring in 3.5% initiates per member, which, combined with good passing and retention rates, can and do yield growth. As seen in Figure 2, yes, we have a lot of lodges bringing in none to very few, but we also have some bringing in a good stream of initiates. 48 lodges have initiated 20+ since COVID, and a five have initiated 40 and even 50+!

Failure to Advance (FTA). Before I even get into this one, I have to point out that these are not fully independent variables. If we were to zero out our FTAs with one-day classes, our NPDs would increase to match, and we've seen that in other comparably-sized States. Similarly, here in Texas when we opened up Stated Meetings to EAs and FCs, our FTA rate increased, but that was matched by a similar NPD decrease, and in the end we ended up with about the same number of Masons. Still, FTA rates are the single biggest decline we've seen over the decades, and it's very lodge-dependent. Today, in some lodges, the vast majority of initiates quit while in other lodges the majority get raised. This can be seen in Figure 3. Note that during that

Figure 3. Lodge Failure to Advance Rate (Sept 2020-Sept 2023)

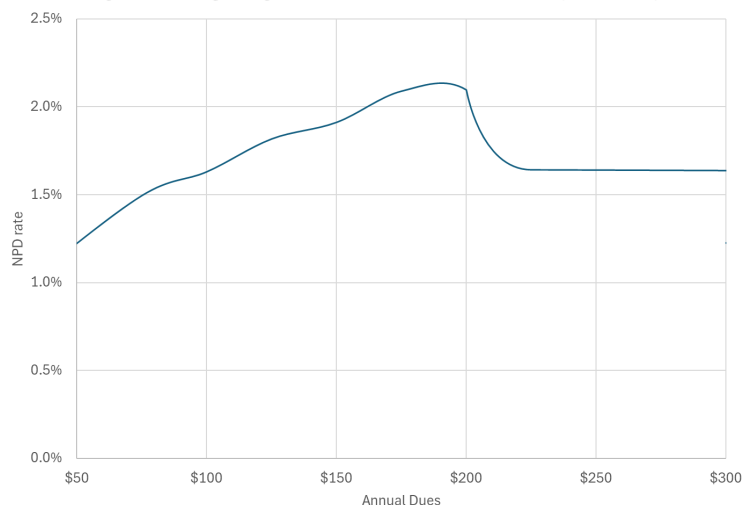


3yr period, we had 256 Brethren initiated into lodges that raised no one, and over a thousand (1067) of our initiates (28% of our total) came into lodges that raised less than a third of what they got. The 181 lodges raising less than a third are not all remote lodges either. 82% of those lodges are East of 100°W longitude (meaning they're in the middle of the Texas Triangle or East Texas) usually within 20 miles of lodges raising much more. Overall, Statewide, we average 53% raised now, a HUGE decline from the 60s and 70s when, with a 3-part EA proficiency and a single blackball, we were consistently raising over 80% of our initiates Statewide. Numerically, that decline is our single biggest change and hindrance to Statewide growth! 53% raised is an abysmal new low and tells us people are not finding what they hoped for like they used to...in some lodges, because, as seen in Figure 3, it's highly lodge specific. Some lodges have yields like 4 current MMs out of 22 EA degrees or 2 MMs out of 19! Overall, 28% of our initiates Statewide come into the 181 lodges that raise less than a third of what they get. The other 550 lodges average raising 72% of what they bring in. That's a big difference. People live where they live and join either a nearby lodge or one where they know someone. If they happen to join one of the 550, they're lucky and have a good chance of continuing in Masonry, but we lose a LOT in the other lodges. Capturing Initiates, particularly in the lodges that struggle with this, needs to be a focus if we are ever to achieve growth on a Statewide basis.

The number of suspensions for Non-Payment of Dues (NPD) has varied between a low of losing 1.1% of our membership following 2022 to a high of 2.4% in 2012, usually between 1.5% and 1.9% with an overall average of 1.7%. It's interesting to note that NPD rates are fairly independent of lodge dues rates (varying less than a percent by dues as shown in Figure 4) while varying several percent between lodges due to other factors. I expect the main factors affecting a Lodge's NPD rate would include how stimulating they are, how active, the atmosphere, how many members proceed to Appendant bodies, etc., but I'll leave retention discussions to another article.

If we were at equilibrium, with no net change in membership year-over-year, we would

Figure 4. Average Lodge NPD Rate for Various Annual Dues (2005-2025)



be raising as many young people as we would be losing old, and our membership age curve would be flat. We have not been at equilibrium since a little after the Korean War though, and after 6 decades of bringing in fewer, younger people than we used to, our membership age curve is heavily weighted towards older members. That means our percentage of members lost to death is going to be higher than it would be at steady state for quite a while, and there's nothing we can do about that. Last year we lost 4.9% of our memberships to death. If we were at equilibrium, with an average member joining in their late 30s and laying down their working tools in their late 80s, that's 50 years of Masonry, or 2% lost per year to death. We'll be above that number for a while, but should we ever get a sustained increase in retained new members, our age curve and that elevated death rate loss would work its way out, although it would take decades.

The "± Other" term in the initial equation is mostly memberships from plurals less withdrawal from plurals, but it also includes 115 Masons who have moved here from out-of-State since 2024 and a handful of demits, suspensions and expulsion losses. Overall, over the past couple of years we've netted a positive 0.7% memberships in the "other" category above. Let's help keep the Texas economy running well.

So what does all that mean? Well, putting it all together, Statewide, our membership has been on an exponential decay curve, losing nearly 3%/yr, for decades. As discussed above, that's overall though. Excluding the consolidations, 267 lodges (36% of our lodges) have a higher current membership today than they did 3 years ago. That's growth! Our top quartile of lodges on EA degrees bring in 3.5% new Brothers per existing member per year. Our top quartile raise 86% of their EAs, and our top quartile on retention only lose 0.7%/yr to NPD on average. Those are a net positive. It's not the losses in those lodges, but rather the lodges that don't raise anyone and don't keep anyone, or a low percentage anyway, that have our Statewide totals in decline. Natural selection will eventually do its thing with those lodges, but in the meantime, it's hard to just sit back and watch 28% of our initiates to go into lodges that we know they're just going to quit, either before being raised or soon thereafter. Where possible, we need to help our Brethren find a quality experience when they come, which in some lodges they appear to, and in others not, as people vote with their feet. So how do we achieve growth? By imitating the successful lodges in their practices, because growth is out there, just not everywhere. – Zachary Haston, PM

MONTHLY QUOTE

"The secret to happiness, of course, is not getting what you want; it's wanting what you get" — Alex Trebek

TEXAS FREEMASON MAGAZINE

The most recent edition of the magazine: <https://grandlodgeoftexas.org/texas-freemason-magazine>.

The Texas Freemason Magazine is published four times a year and is available in PDF format on the Grand Lodge website under the "MEDIA/MAGAZINE" tab. In addition to the digital format, The Winter and Spring issues are printed and mailed before and following the Grand Annual Communication. If you are not receiving the magazine in the mail, it is likely your address is not correct in the Grand Lodge database. You can correct this by visiting the Grand Lodge website and logging into the member portal where you can edit your profile as needed.

MONTHLY LAW READING – Suspension of Plural Members

We have just recently finished our annual cycle of reporting members who are in arrears in their dues to the Grand Lodge and formally suspending those members on June 23rd. There is a common misconception that if a member is suspended for non-payment of dues in one lodge that they may continue to attend in a different lodge that they hold plural membership in. Articles 351 and 352 set out the procedures for when this occurs and how to regain membership in all lodges that a member belongs to.

Art. 351. Effects of Suspension or Expulsion in One Lodge.

A. When a Brother who holds membership in any Lodge in this Grand Jurisdiction, is suspended or expelled for any reason from any Lodge, he is automatically suspended or expelled from all other Lodges in which he might hold membership, without further action than noting the fact in the minutes. The Secretary of the Lodge inflicting such penalty shall immediately report the fact to the other Lodge or Lodges and to this Grand Lodge.

B. When a Brother who holds his parent or plural membership in another Grand Jurisdiction and his other membership in this Jurisdiction is suspended or expelled in this Jurisdiction, such fact shall be immediately reported to the Secretary of his Lodge in the other Jurisdiction. (For Suspension or Expulsion for other than non-payment of dues in another Grand Jurisdiction see Art. 641).

Art. 352. Reinstatement in One Lodge: Effect.

Any Brother holding plural membership in Lodges in this Jurisdiction, who has been suspended or expelled for any cause by one of his Lodges, shall, upon reinstatement therein, be automatically reinstated in his other Lodge or Lodges, unless a protest is filed by a member of that Lodge with the Worshipful Master. Where the suspension or expulsion is for non-payment of dues, a protest is not allowed. Under this Article and Art. 627, a protest has the effect of three blackballs. (Revised 1994)

– Jeremy R. Johnson, P.M.

TX MASON APP

The TX Mason app is over **5,000** users! Please join the 5,253 Brothers using the TX Mason APP! This is separate from the GrandView App & has a searchable (updated) law book and monitor at your fingertips.

<https://grandlodgeoftexas.app/launch.html>

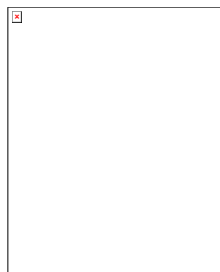
HEATIN' UP! TEXAS MASONIC BBQ COOKOFF PLUS CLASSIC CAR & MOTORCYCLE SHOW

Think it's hot now? The competition really heats up at the statewide Masonic Barbecue Cookoff and Classic Car & Motorcycle Show on Saturday, Oct. 11, 2025! Held during Family Day, the largest gathering of Texas Masons and their families, winners compete for bragging rights, trophies, and many other awards. Entry forms and rules at <https://yourtmrc.org/family-day/>



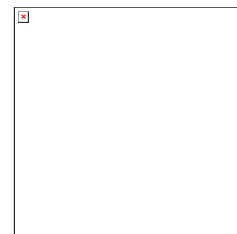
Grand Master's Calendar of Events

Date	Event	Time	Location	Address
Saturday 9/6/2025	Milam Lodge No. 2 Chair Ceremony	8:30 A.M.	Milam Lodge #2	129 S. Fredonia St, Nacogdoches, TX 75961
Monday 9/8/2025	Official Visit to Angleton Lodge No. 829	6:30 P.M.	Angleton Lodge #829	1205 N. Chenango St, Angleton, TX 77515
Saturday 9/30/2025	175 th Anniversary Rocky Mount Lodge No. 63 and Clinton No. 23	12:00 P.M.	Clinton Lodge #23	477 TX-571 Loop, Henderson, TX 75654



Major John B Jones Masonic Rangering Company Annual Meeting October 25, 2025

Mark your calendar for Saturday, October 25, 2025!
Camp Alzafar - Camp Alzafar Road, Boerne, Tx 78006



This year, the Annual Meeting will take place at Camp Alzafar on the Guadalupe River. This is a daylong event with GM Raborn Reader and members of the Rising Star Ranger Degree Team.

IMPORTANT: This is a "Texas Style" masonic event open to all worthy Masons. You do not need to be a member of the Rangering Company to attend. Entered Apprentices and Fellowcrafts are welcome to attend the Annual Meeting and Swearing In Ceremony for new members.

Agenda:

1:00pm Registration

2:00pm Open EA Lodge, Swearing in New Members

2:45pm Open MM Lodge - Rising Star Ranger Lodge to confer the MM Degree

5:00pm Close MM Lodge

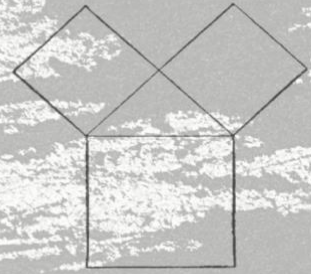
Adjourn to Pavilion for Social Hour & Dinner - BBQ Meal - \$20 per person

During our Meeting and Lodge, there will be a special ladies' event at the Pavilion -- "Bingo with Prizes" which has proven to be very popular with the ladies.

There are both camper and motorhome sites available by reservation through Alzafar Shrine Temple at 210-496-1625. IF YOU HAVE AN QUESTIONS - CONTACT THE FORMER TEXAS RANGERS FOUNDATION OFFICE AT [830-990-1192](tel:830-990-1192) OR JOE@FORMERTEXASRANGERS.ORG.



Committee on Work Schedule



<u>Date</u>	<u>Lodge</u>	<u>No.</u>	<u>City</u>	<u>District</u>	<u>Forum</u>	<u>Exam</u>
Cody Cockroft						
Sat, 13 Sep 2025	BW Tinsley	1458	Houston	30-C	8:00 AM	Following
Sat, 20 Sep 2025	Lee Scott	793	Somerville	44	8:00 AM	Following
Sat, 18 Oct 2025	Bridge City	1345	Bridge City	25-A	8:00 AM	Following
Sat, 25 Oct 2025	Joaquin	856	Joaquin	15	8:00 AM	Following
Thur, 30 Oct 2025	Huffman	1428	Huffman	30-D	8:00 AM	Following
Chuck Forsyth						
Sat, 13 Sep 2025	Cross Plains	627	Cross Plains	74	9:00 AM	Following
Sat, 20 Sep 2025	Decatur	447	Decatur	87	9:00 AM	Following
Sat, 27 Sep 2025	H.A. McFarland	1338	Odessa	82	9:00 AM	Following
Sat, 25 Oct 2025	Brownwood	279	Brownwood	76	9:00 AM	Following
Steve Pepper						
Fri, 5 Sep 2025	Pampa	966	Pampa	98	6:00 PM	Exam Only
Sat, 6 Sep 2025	Pampa	966	Pampa	98	9:00 AM	Forum Only
Sat, 4 Oct 2025	Mackenzie	1327	Lubbock	93	9:00 AM	Following
Cody Stewart						
Sat, 13 Sep 2025	James A. Smith	395	Farmers Branch	14-F	8:00 AM	Following
Sat, 27 Sep 2025	Hillsboro – CANCELLED	196	Hillsboro		CANCELLED	CANCELLED
Sat, 25 Oct 2025	Castillian	141	Canton	12	8:00 AM	Following
Sat, 8 Nov 2025	Metropolitan	1182	Dallas	14-E	8:00 AM	Following
Sat, 15 Nov 2025	Knob Creek	401	Temple	48	8:00 AM	Following
John Peters						
Sat, 6 Sep 2025	Hondo City	756	Hondo	53	9:00 AM	Following
Sat, 13 Sep 2025	Floresville	515	Floresville	38	9:00 AM	Exam Only
Sat, 4 Oct 2025	Solomon	484	Taylor	47	9:00 AM	Following
Sat, 18 Oct 2025	Hardeman	179	Luling	35-A	9:00 AM	Following

For more information go to: <https://grandlodgeoftexas.org/committee-on-work>

The Grand Lodge of Texas Cornerstone Leveling Ceremonies 2025



For Information Contact:

Kevin T. Binder - State Cornerstone Coordinator
832-489-7778 - kevinbinder30@gmail.com

<i>Date</i>	<i>Time</i>	<i>Lodge</i>	<i>Location</i>	<i>Grand Lodge Representative</i>
Saturday 9/6/2025	Lunch or Refreshments at Noon Open Whitt Lodge at 1:00pm Open Grand Lodge at 1:15pm Cornerstone Ceremony at 2:00pm	Whitt #624 101 Main St. Whitt, TX 76490	New Fire Station	Kenneth C. Curry Past Grand Master
Monday 10/13/2025	Lunch or refreshments at 11:00am Open Elgin Lodge at Noon Open Grand Lodge at 12:15pm Cornerstone Ceremony at 1:00pm	Elgin #328 30 North Ave. C Elgin, TX 78621	New School	H.N. "Chip" Green, Jr. Grand Jr. Warden
Friday 10/17/2025	Coffee & donuts at 9:00am Open Forrest Lodge at 10:00am Open Grand Lodge at 10:15am Cornerstone Ceremony at 11:00am	Forrest #19 1030 12th St. Huntsville, TX 77340	New City Hall	Raborn L. Reader, Jr. Grand Master
Friday 10/24/2025	Lunch or refreshments at 11:00am Open Deer Park Lodge at Noon Open Grand Lodge at 12:15pm Cornerstone Ceremony #1 at 1:00pm Cornerstone Ceremony #2 at 1:30pm	Deer Park #1362 2809 Center St. Deer Park, TX 77536	Fire Station #1 & Dow Active Complex	Raborn L. Reader, Jr. Grand Master

Join the Texas Cornerstone State coordinator Kevin Binder's Facebook Group
<https://www.facebook.com/share/CiHNBv12zSaqwVhh/?mibextid=K35Xfp>

GRAND SECRETARY OFFICE STAFF DIRECTORY

Hours of Operation:

8:30 AM to 4:00 PM, Monday – Friday

Phone: 254-753-7395

Fax: 254-753-2944

Physical Address:

715 Columbus Ave
Waco, TX 76701

Mailing Address:

PO Box 446
Waco, TX 76703

Brad S. Billings - Grand Secretary

gs@grandsecretaryoftx.org

Legal Advice – Please DO NOT call our office asking questions on Masonic Jurisprudence. That is a question for your DDGM.

The Internet Committee is partnering with the Grand Secretary's office to offer technical support in the following areas:

- Access to the Grandview Member Portal or password reset
- DDGM, DCO, & DEO access to District-wide tools
- TX Mason APP - including registering or downloading

To seek help with the preceding, send an email to internet@grandlodgeoftexas.org and please leave a mobile number and your ID so they can reach you.

Dave McHam

dave@grandsecretaryoftx.org

In-State Affiliations
Specialized Reporting
GL & Lodge Procedures
Vanguard Application Collection

Cindy Huerta

cindy@grandsecretaryoftx.org

Annual Returns
Lodge By-law Revisions
Relief Assistance Request
Endowed Memberships

Jeff Frayser

fraternal@grandsecretaryoftx.org

Out-of-State Correspondence
Dispensations

Justin Hancock

justinh@grandsecretaryoftx.org

Honesty & Integrity Awards
Lamar Medals
Forms and Lodge Supply Orders
Grand Lodge Service Awards
Golden Trowel Awards
Community Builder Awards

Zachary Haston

zhaston@grandsecretaryoftx.org

Membership
Lodge Officer Maintenance
Esoteric Record Maintenance
Form 71 Collection
IRS Form 990's Collection

Jeremy Johnson

jjohnson@grandsecretaryoftx.org

Lodge Secretary Training & GS Newsletter

SECRETARY INSTRUCTIONS

The following information is intended primarily for the Secretary but may be meaningful to many of your members.

Lodge Suspense System:

Suspense Dates – Lodge Secretaries should create a suspense system (a reminder system) to alert the Lodge that certain documents are due. This list is offered as a “starter kit” for your consideration:

- a. January – The Worshipful Master should appoint a Committee on Members in Arrears (Article 319a).
- b. May 31 – W. B. and Brandon Carrell Award nominations may be submitted to the Grand Lodge Committee on Public Education for evaluation and recommendation to the Grand Lodge Trustees (Article 14b).
- c. Mid-June – Look for the Annual Returns Format from GL. (Downloaded from the Grand View System after June 24th. Notify the GS staff if you need the returns mailed as a printout).
- d. June 23 – Lodge elections must be completed at the last stated meeting prior to midnight of June 23 (Art. 292). Notify us of the new Lodge Officers immediately so they can be printed in the Directory of Constituent Lodges (do not wait for installation). Submission will be available on the Grand View System from May 24 through midnight June 23.
- e. June 23 – Endowed Membership checks must be in the Office of the Grand Secretary by June 23 to start earning interest in order to receive returns by the next year (Art. 318a). Changes to the amount of endowments must be voted on at the same meeting as the Lodge elections, and notification to the Grand Lodge must be before June 24th. Endowed Membership applications received at the Grand Lodge on or after June 24 must be for the amount that the Lodge reported.
- f. July 15 – Statements of Availability due GS Office. (6a).
- g. July 31 – Lodge installations must be performed from June 24 to prior to midnight July 31 (Art. 298).
- h. August 15 – Annual Returns Report due to Grand Lodge (Art. 493).
- i. August 15 – Resolutions due in GS Office (Art. 172).
- j. August 30 – Vanguard Applications are due to the DDGM electronically no later than August 30 and to the Committee on Masonic Education electronically via cme@grandlodgeoftx.org (refer to Vanguard Application Instructions).
- k. September 15 – Lodge Minimum Audit Report 71 is due to the GS Office NLT September 15 (Art. 284).
- l. October 1 – Lodge By-Laws that must be reviewed by the GL Committee on By-Laws due the GS Office NLT October 1 (Art. 219).
- m. Nov 15 – Form 990-N, Electronic Notice (e-Postcard), must be filed with the IRS by Lodges that have gross receipts of \$50,000 or less or do not meet the requirements for filing the IRS 990 or IRS 990EZ. (Lodges must file the appropriate Form 990 no later than the 15th day of the fifth month following the close of the organization’s fiscal year.)
- n. Dec. 28 – Proxy Certificates are due the GS Office NLT December 28 (Art. 4). You should always appoint a Proxy (in case of an emergency) but he would not vote if any of the top three officers were available. Remember, each brother can have no more than four votes. Therefore, a sitting Worshipful Master cannot be a proxy for another Lodge.