

OCULON  
READY ARCHITECTURE

# Oculon

## Profile & Design DNA

2026

REBRAND EDITION

▶ Architecture Made Accessible

02

# Why Oculon

We believe architecture should be clear, simple, and accessible.

Oculon exists to make design ready — not complicated.



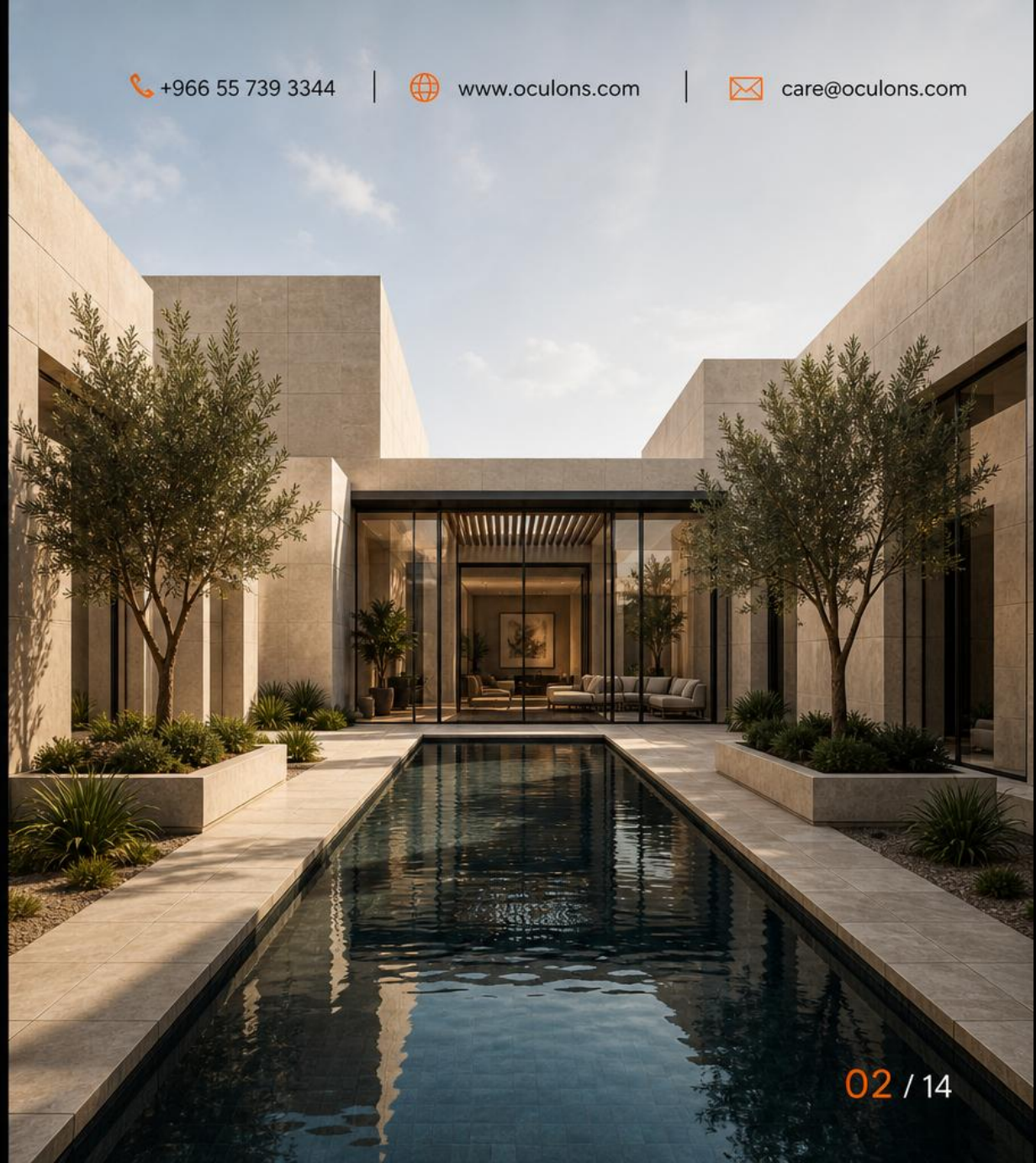
About



OCULON.Store



Guideline



03

# Who We Are

Oculon is a design platform built to simplify architecture and support better decisions.

We combine  
**design + advisory**  
in one system.



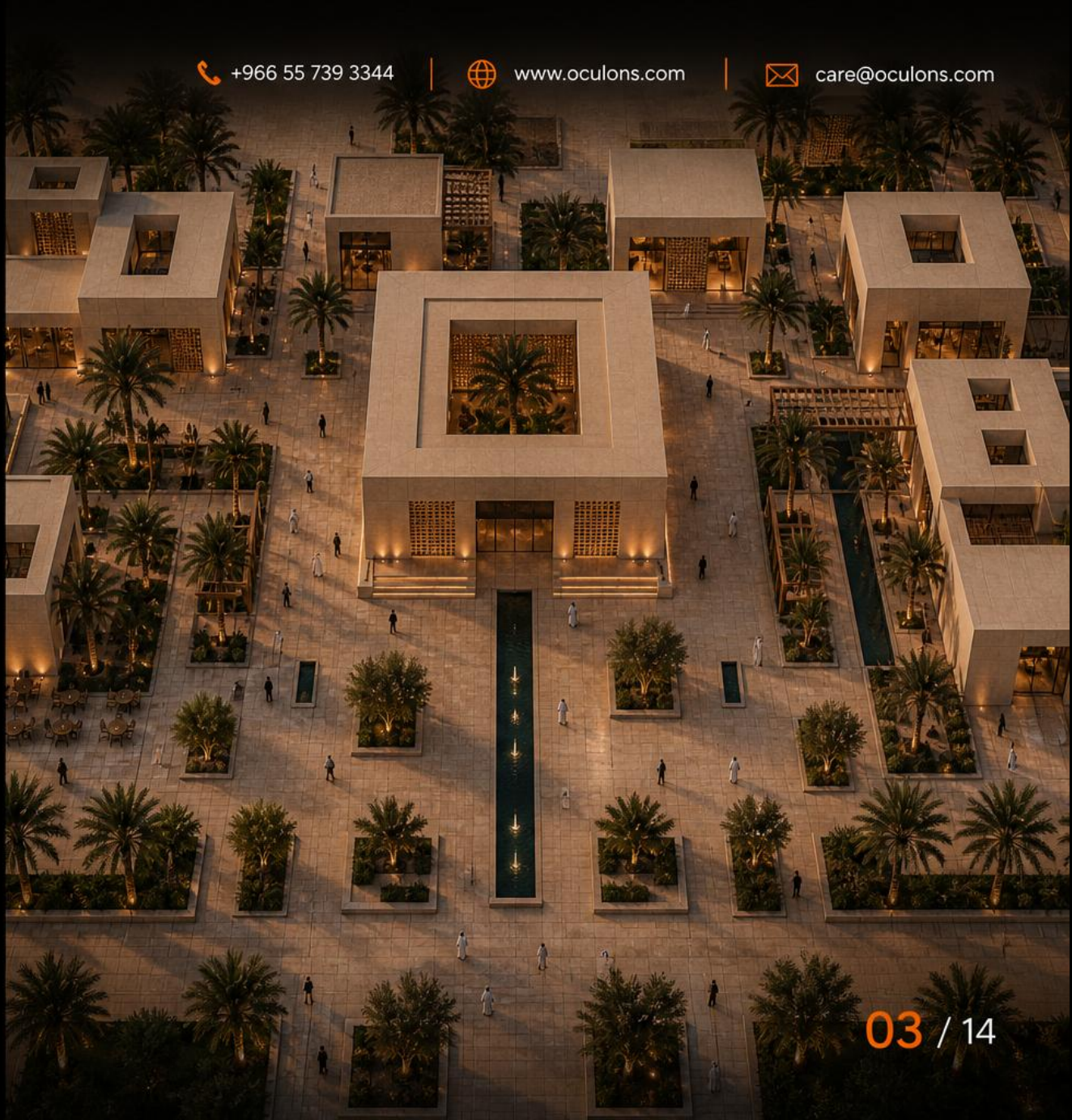
About



OCULON.Store



Guideline



04

# What We Do

Two core engines:



**Design Collection**  
Ready architecture solutions



**Advisory**  
Strategic & development support



About



OCULON.Store



Guideline



## Design Services

End-to-end design solutions shaped by clarity, function, and timeless architecture.

-  Villas
-  Apartments
-  Interiors
-  Workplace
-  Urban
-  Hospitality



About



OCULON.Store



Guideline



06

# Advisory

Strategic advisory that turns complexity into clarity. We help you make better decisions, faster.



Development Advisory  
Feasibility, concept & positioning



Investment Advisory  
Market studies & financial insights



Project Advisory  
Planning, risk & value management



Operational Advisory  
Processes, governance & efficiency



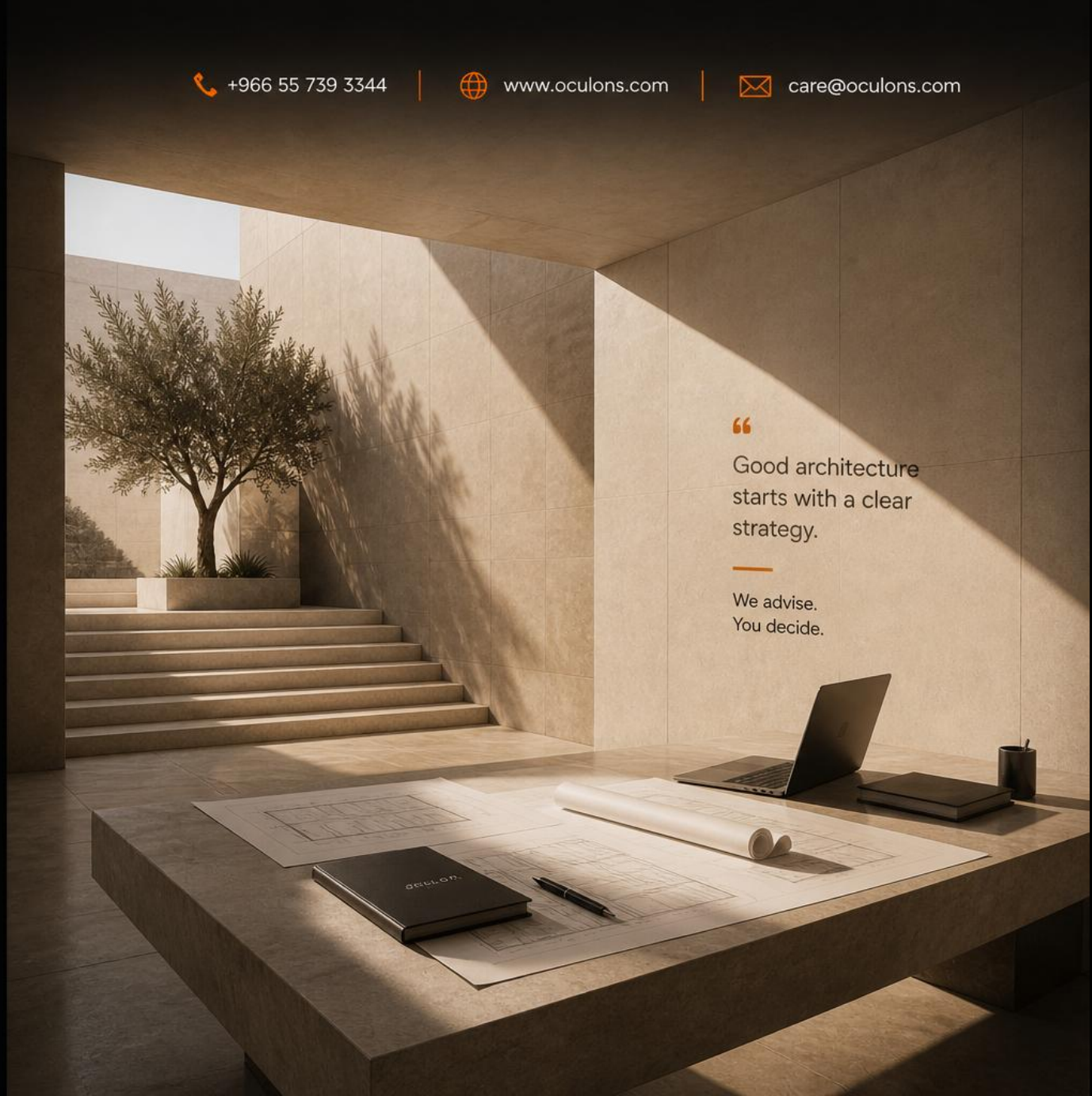
About



OCULON.Store



Guideline



“

Good architecture starts with a clear strategy.

—  
We advise.  
You decide.

07

# Why Oculon.

We use Artificial Intelligence combined with our expertise to generate unique ideas and move toward the future faster.

We design with a clear identity that reflects the environment we live in. Our collections are easy to access and created for everyone. **Quality design, within reach.**



AI-Powered  
Ideation



Environmentally  
Conscious



Curated  
Collections



Accessible  
for All



AI-POWERED  
IDEATION

Advanced AI tools analyze trends, needs, and context.



UNIQUE IDEAS  
GENERATED

Creative and original concepts tailored for real life.



HIGH-QUALITY  
DESIGNS

Expertly refined to ensure beauty, function, and detail.



DIGITAL PUBLISHING  
& ACCESS

Published online for easy browsing and instant access.



DESIGN FOR ALL  
BUDGETS

Thoughtful collections made for the majority, not the few.

# Our Design Process.

A smarter way to design — ready, refined, and within reach.

Choose from curated **Oculon** collections and purchase instantly, or customize a design tailored to your needs using our **DNA**.



About



OCULON.Store



Guideline



01

**Explore**

Browse our curated Oculon collections.



02

**Select**

Choose a ready-made design that fits your needs.



03

**Purchase**

Instant access — no delays, no complexity.



04

**Customize**

Adapt the design to your land and requirements.



05

**Refine**

We enhance and finalize based on Oculon DNA.



06

**Deliver**

Clear, buildable, and ready for execution.



**Clear Communication**  
Simple, transparent, direct.



**Quality First**  
Designed with precision and care.



**Fast Access**  
No waiting — ready when you are.



**Flexible Design**  
Customize with confidence.



**Long-Term Value**  
Built to last, designed to belong.

09

# DESIGN DNA.

Our architectural language.  
Timeless by intention.

At Oculon, design is not decoration.  
It is a system built on clarity, depth, and calm.

We shape rectilinear forms, protect openings,  
and use perforated screens to filter light  
and create privacy.

Courtyards, water, and landscaping are  
integrated as essential elements, connecting  
nature and architecture.

We use honest materials, warm palettes,  
and considered details to create spaces  
that feel rooted, enduring, and human.

**Calm. Clear. Human.**



**Architecture  
Rooted in Context**

Local identity.  
Global vision.



**Light as  
a Material**

Shaping mood.  
Enhancing experience.



**Privacy Through  
Design**

Protected openings.  
Thoughtful layers.



**Nature  
Integrated**

Courtyards, water,  
and landscape  
as essential.



**Honest  
Materials**

Natural.  
Timeless.  
Enduring.



**Details That  
Matter**

Care in every line.  
Purpose in every  
detail.

# 10 DESIGN DNA.

Design language. Rectilinear massing, protected openings, square perforated screens, and deep wall recesses create shade, depth, and permanence.

Calm lighting, desert courtyards, and restrained landscapes complete a balanced and timeless spatial experience.

Simple, honest architecture — shaped by light, shadow, and calm.



**01**  
**Square Perforated Screens**

Filter light. Add privacy.  
Create rhythm and depth.



**02**  
**Rectilinear Massing**

Clean geometry.  
Timeless presence.



**03**  
**Deep Recess & Thickness**

Creates shadow.  
Adds depth and permanence.



**04**  
**Protected Openings**

Shaded. Controlled.  
Intentional and secure.



**05**  
**Calm Lighting**

Soft, warm, and ambient.  
Comfort without glare.



**06**  
**Desert Courtyard**

Brings light inward.  
Water adds calm and reflection.



**07**  
**Desert Landscape**

Native. Resilient.  
Integrated, not added.

# 11

## ARCHITECTURAL FOUNDATION.



### Architectural foundation of Oculon.



#### A CALM, CLEAR, AND TIMELESS LANGUAGE

Inspired by desert architecture and contemporary Saudi modernism.



#### LIGHT AND SHADOW AS ARCHITECTURE

Rectilinear massing, deep square recesses, and perforated screens shape light and shadow as a core architectural element — not decoration.



#### HONEST AND WARM MATERIALS

Sand-toned plaster, local stone textures, and natural matte wood create spaces that feel grounded, enduring, and serene.



#### ARCHITECTURE IN HARMONY WITH NATURE

Palm trees, olive trees, and desert-adapted planting integrate architecture and landscape in perfect balance.



#### A DESIGN PHILOSOPHY

Oculon DNA is more than an aesthetic — it is a philosophy: clarity in form, authenticity in material, and simplicity that feels human and intentional.

**PROJECT SAMPLE.**

DESERT COURTYARD VILLA

A serene villa composed around shaded courtyards and water, where architecture, light, and landscape work in harmony.

 RECTILINEAR MASSING

 PROTECTED OPENINGS

 DEEP RECESSES & SHADOW

 NATURAL LANDSCAPE



PROJECT TYPE

Private Residence

LOCATION

Riyadh, KSA

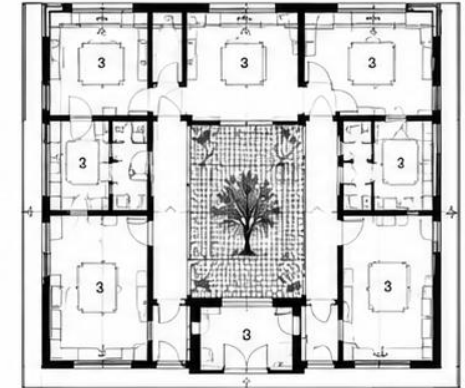
AREA

420 m<sup>2</sup>

YEAR

2025

FLOOR PLAN



- |               |                  |
|---------------|------------------|
| 1 LIVING AREA | 5 KITCHEN        |
| 2 DINING      | 6 MASTER BEDROOM |
| 3 COURTYARD   | 7 BEDROOM        |
| 4 MAJLIS      | 8 SERVICES       |

SECTION A-A



MATERIAL PALETTE



SAND-TONED PLASTER



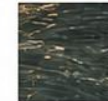
NATURAL STONE



WARM OAK WOOD



PERFORATED SCREEN



WATER FEATURE



DESERT PLANTING

OCULON DNA

Architecture shaped by clarity, light, and calm. Rectilinear masses, protected openings, and deep recesses create shade and privacy, while courtyards and water bring life and balance to every space.

SIMPLE. HONEST. TIMELESS.  
BUILT TO LAST.

# OCULON

READY ARCHITECTURE

## 13

### PRODUCT SAMPLE.

#### SMALL HOUSE PLAN

A compact and efficient house plan designed for comfort, privacy, and natural light.



#### EFFICIENT LAYOUT

Smart use of every square meter



#### NATURAL LIGHT

Strategic openings & courtyards



#### PRIVACY

Clear separation of private zones



#### WARM MATERIALS

Honest, natural, and timeless



#### PRODUCT TYPE

Residential Prototype

#### BUILT-UP AREA

85 m<sup>2</sup>

#### BEDROOMS

2

#### BATHROOMS

1

#### DIMENSIONS

10.00m x 10.00m

#### FLOOR PLAN



- |   |                 |   |            |
|---|-----------------|---|------------|
| 1 | LIVING & DINING | 5 | KITCHEN    |
| 2 | COURTYARD       | 6 | BEDROOM 02 |
| 3 | BEDROOM 01      | 7 | BATHROOM   |
| 4 | ENTRY           | 8 | SERVICES   |



#### SECTION A-A



#### AXONOMETRIC VIEW



#### MATERIAL PALETTE



LIMESTONE  
PLASTER



TRAVERTINE  
STONE



NATURAL  
WOOD



PERFORATED  
SCREEN



BRONZE  
ALUMINUM



DESERT  
PLANTING

#### OCULON DNA

Thoughtful proportions, natural materials, and a serene courtyard create a home that feels open, private, and timeless.

SIMPLE. HONEST. TIMELESS.  
BUILT TO LAST.

OCULON

READY ARCHITECTURE

14

## URBAN.

PLACES FOR LIFE

We design urban environments that bring people together. Timeless spaces that balance heritage, nature, and modern living.



### PEOPLE FIRST

Vibrant and walkable places



### NATURAL INTEGRATION

Greenery and water in harmony



### TIMELESS ARCHITECTURE

Rooted in context, built to last



### EXPERIENTIAL SPACES

Cafes, culture, and connection



### VIBRANT DESTINATION

Spaces that attract and bring communities together.



### GREEN & SHADED

Trees and water create comfort and beauty.



### LOCAL IDENTITY

Architecture inspired by place and culture.



### ACTIVE & SOCIAL

Cafes, retail, and gathering spaces for everyday life.



### DESIGNED TO LAST

Timeless, sustainable and future-ready.



15

## WORKPLACE.

SPACES THAT WORK

We design workplaces that inspire people, support focus, and encourage collaboration. Environments shaped by clarity, light, and balance.



### PEOPLE CENTRIC

Designed for comfort, wellbeing, and productivity.



### FLEXIBLE SPACES

Adaptable layouts for teams and growth.



### NATURAL ELEMENTS

Light, greenery, and materials that connect.



### FOCUSED & SECURE

Acoustic comfort and privacy where it matters.



### NATURAL LIGHT

Daylight and views boost energy and wellbeing.



### ACOUSTIC COMFORT

Thoughtful materials create calm and reduce distraction.



### BIOPHILIC DESIGN

Bringing nature inside for healthier work environments.



### MATERIAL INTEGRITY

Honest, tactile materials that age beautifully.



### COLLABORATION

Spaces that connect teams and spark meaningful ideas.



### SAFETY & SECURITY

Smart systems for a safe and secure workplace.



---

We design spaces that are calm,  
timeless, and built to last.

---

#### GET IN TOUCH

-  Riyadh, Saudi Arabia
-  +966 55 739 3344
-  <https://oculons.com/>
-  [care@oculons.com](mailto:care@oculons.com)
-  +966 55 739 3344

#### BUSINESS INFORMATION



CR NUMBER  
7050314454



SAUDI ENG. COUNCIL  
5100004886

---

SIMPLE. HONEST. TIMELESS.  
BUILT TO LAST.

