

# 7 PRINCIPLES FOR PLANNING AND DESIGNING FOR TSUNAMI HAZARDS



2. Avoid new developments in tsunami inundation areas.



4. Design and construct new buildings to minimize damage.

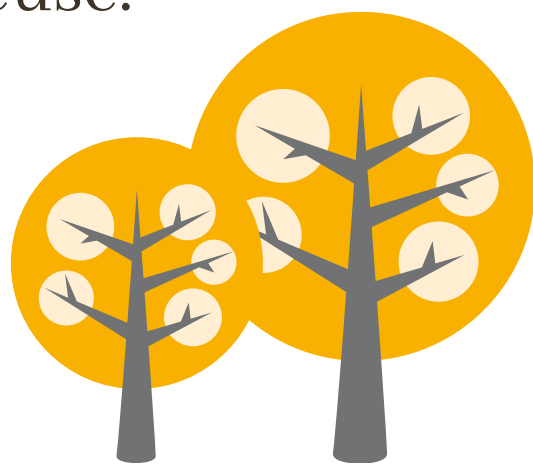
6. Locate and design infrastructure and critical facilities to minimize damage.

1. Know your community's tsunami risk.



3. Locate and configure new developments that do occur in tsunami inundation areas to minimize future losses.

5. Protect existing developments through redevelopment, retrofit, and land reuse.



7. Plan for evacuation.

