

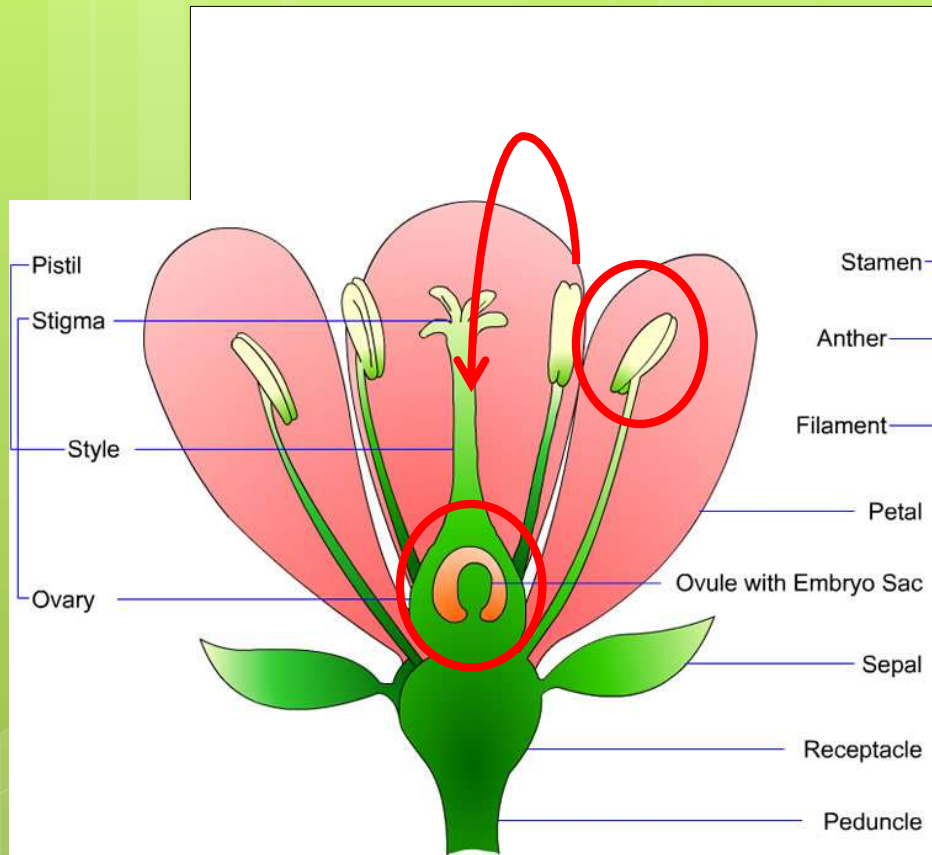


NATIVE BEES

POLLINATION

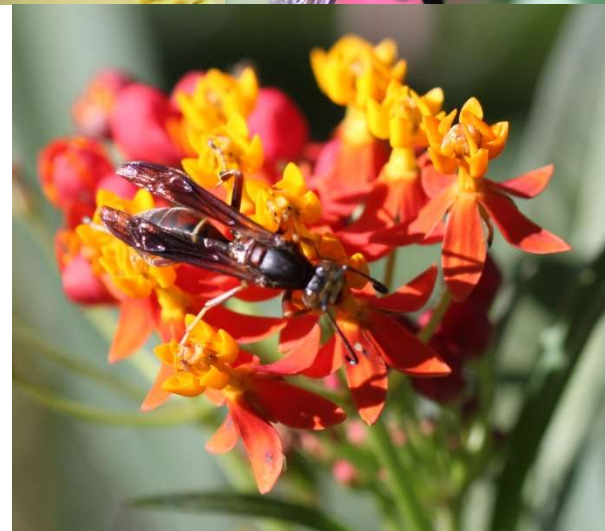
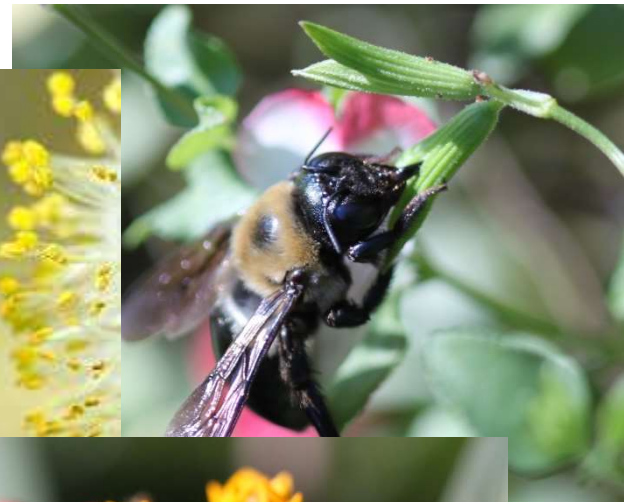
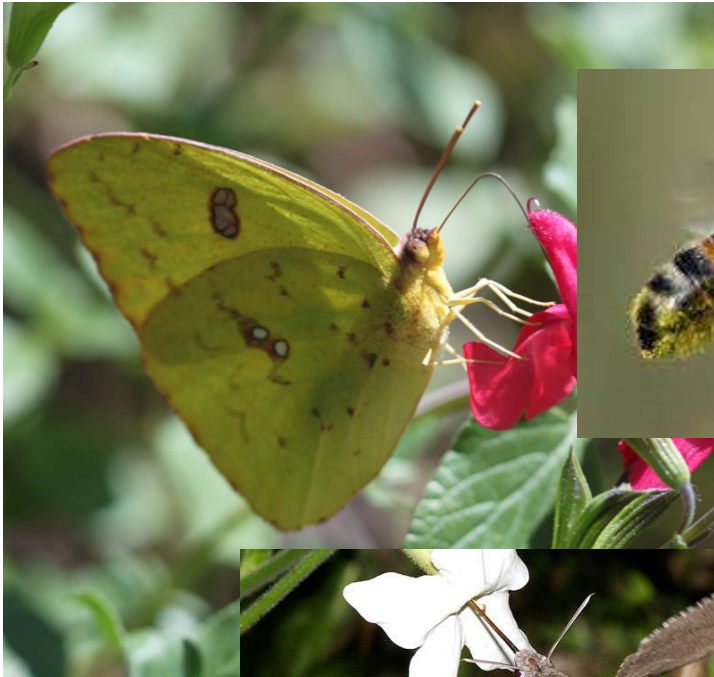
WHAT IS POLLINATION?

- To transfer pollen from a stamen to an ovule

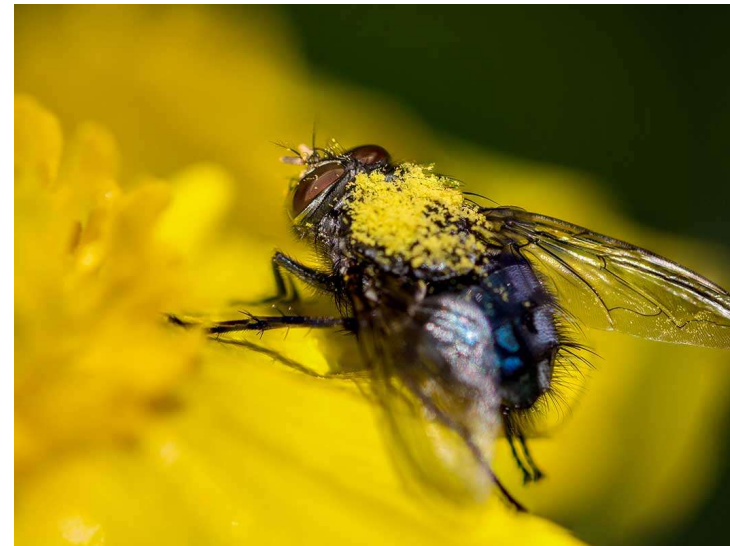


POLLINATORS

WHO ARE THE POLLINATORS?



POLLINATORS



Hand Pollination



What foods need pollination?



QUIZZ TIME!

POLLINATED CROPS



Alfalfa
Apple
Almond
Artichoke
Asparagus
Blackberry
Blueberry
Broccoli
Brussels
sprouts

Some crops pollinated by bees³

Cabbage
Cacao
Cantaloupe
Carrot
Cashew
Cauliflower
Celery
Cherry
Citrus
Dill
Eggplant/
Aubergine
Fennel
Garlic

Kale
Kola nut
Leek
Lychee
Macadamia
Mango
Mustard
Nutmeg
Onion
Passion fruit
Peach
Pear
Plum
Pumpkin

Raspberry
Sapote
Squash
Sunflower
Tangerine
Tea
Watermelon





**Without bees they'll
all be off the menu**

WHAT PLANTS DO NOT NEED POLLINATION?

- All leafy greens
- Below ground root veggies and tubers such as carrots, parsnips, potatoes, sweet potatoes, horseradish
- Ground level root veggies such as beets, turnips, rutabagas
- Most legumes including peas and beans
- Corn—like other wind-pollinated veggies, giving them a little shake helps distribute the pollen
- Celery
- Rice, wheat

If we die,
we're taking
you with us!

TheOrganicView™
www.TheOrganicView.com

Credit: John Kimbler





Image courtesy of Crown Bees

NATIVE VS. NON-NATIVE



NATIVE BEES

In the United States, there are over 4,000 species of native bees.



NATIVE BEES OF EASTERN NORTH AMERICA
PHOTOS BY CLAY BOY | BEESFORBEEBEE.ORG | WESTHOORNENGINERS.NET



BUMBLE BEES

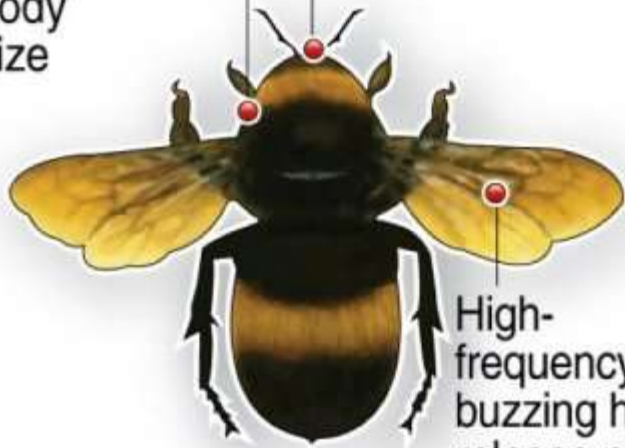


Bumble bee

Adapted to specialise in pollination of tomatoes and berries

Large body size

Long tongue



High-frequency buzzing helps release pollen from flowers

■ More than 90 percent drop in the US population within 20 years

Source: PNAS



Bumble Bee



Carpenter Bee



MASON BEES

- Quite small
- Bluish/black metallic
- Solitary
- Can sting but usually do not – non aggressive
- Do not make holes – use pre-existing holes – (Carpenter Bee is the drilling culprit)
- Do not make honey



MASON BEES



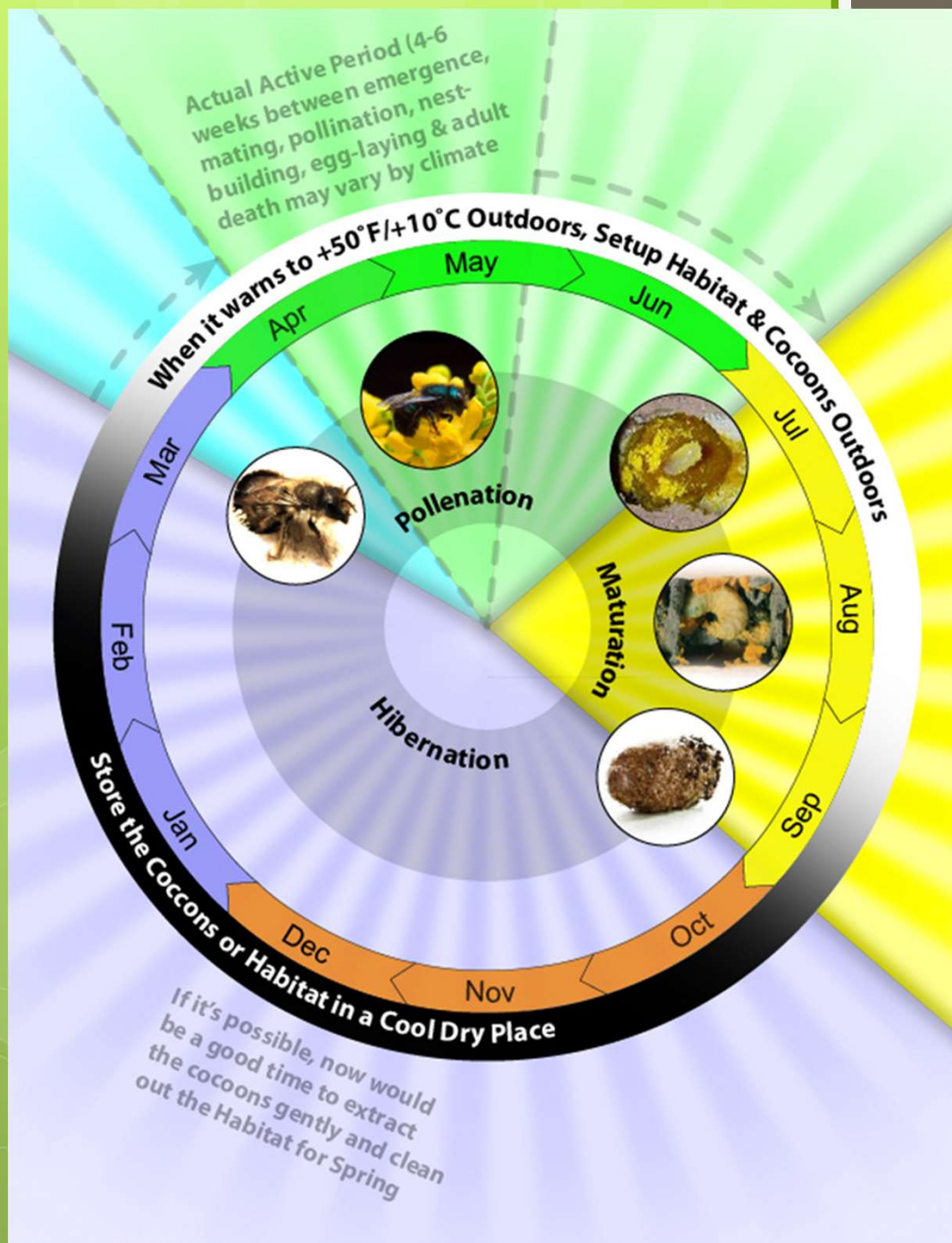
- Will lay female eggs first (2) and then lay 4 males
- Each cell is filled with pollen bread and an egg

- Caps the end of the tube with mud



MASON BEE LIFE CYCLE

- Super pollinators
- Active April – June
- Out pollinate honey bee 80 to 1
- Belly flop onto the flower
- 250 Mason bees to pollinate 1 acre of apple trees vs. 20,000 honey bees
- Females live around 8 to 10 weeks; drones (males) 2 to 3 weeks



BUILD YOUR OWN HOTEL



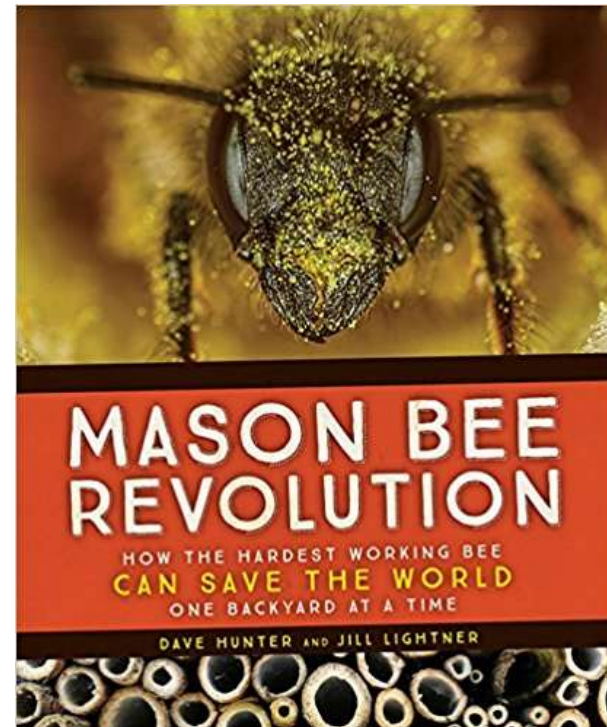
- 5-6" Deep
- Capped on one end
- Bamboo works well
- Cardboard tubes
- PVC tubes
- 3/8" or 5/16" is best
- 25-50 holes/ backyard
- Face east or SE
- Morning sun
- Sheltered
- Do Not Move until AFTER holes are filled (after August)

Google search “Mason Bees” – you will find lots of useful and helpful information.



Crown Bees Mason Bee Accessories Mud Mixture
by Crown Bees

\$8⁴⁵ + \$4.54 shipping



The Mason Bees : Taking the Sting Out of Beekeeping 2001

by Christopher O'Toole

Paperback

\$7.24 (8 used & new offers)

Resources:

Sherian A. Wright - \$19.84

Mason Bees for the Backyard Gardener Paperback – January 6, 2010

by Sherian A. Wright (Author)

★★★★☆ 12 customer reviews



▶ See all formats and editions

Paperback
\$19.84 ✓Prime

7 Used from \$19.20
24 New from \$15.74

In the beginning...it was all about the honeybee, but there's another bee out there that deserves equal - if not more - recognition. A true native American, she is called the mason bee (scientific name: *Osmia lignaria*). She does not produce honey, but she is a master pollinator whose skills far exceed those of the honeybee. If you've got fruit trees and want more fruit, then this is the bee for you! *Mason Bees for the Backyard Gardener* contains wonderful color photographs and illustrations. Step-by-step instructions get you started, choosing between an almost no-work method to a more involved method of winterizing your bees. In an era when people are asking "What's happening to the bees?" this book is indeed timely by focusing on a bee that requires no special equipment for its "beekeeping" criteria. This book contains

▼ Read more



See this image

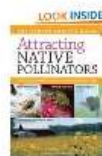
Customers Who Bought This Item Also Bought



The Orchard Mason Bee:
The Life History, ...
▶ Brian L. Griffin
★★★★☆ 17



Mason Bee House
★★★★★ 53
\$19.95



Attracting Native
Pollinators: The...
The Xerces Society
★★★★★ 43



Schrodt Designs Model
MB-L Mason Bee Lodge
★★★★★ 16
\$39.07 ✓Prime



Esschert Design WA02
Bee House
★★★★☆ 24
\$15.02 ✓Prime



Pollination
Bees: A C...
Margriet D...
★★★★☆

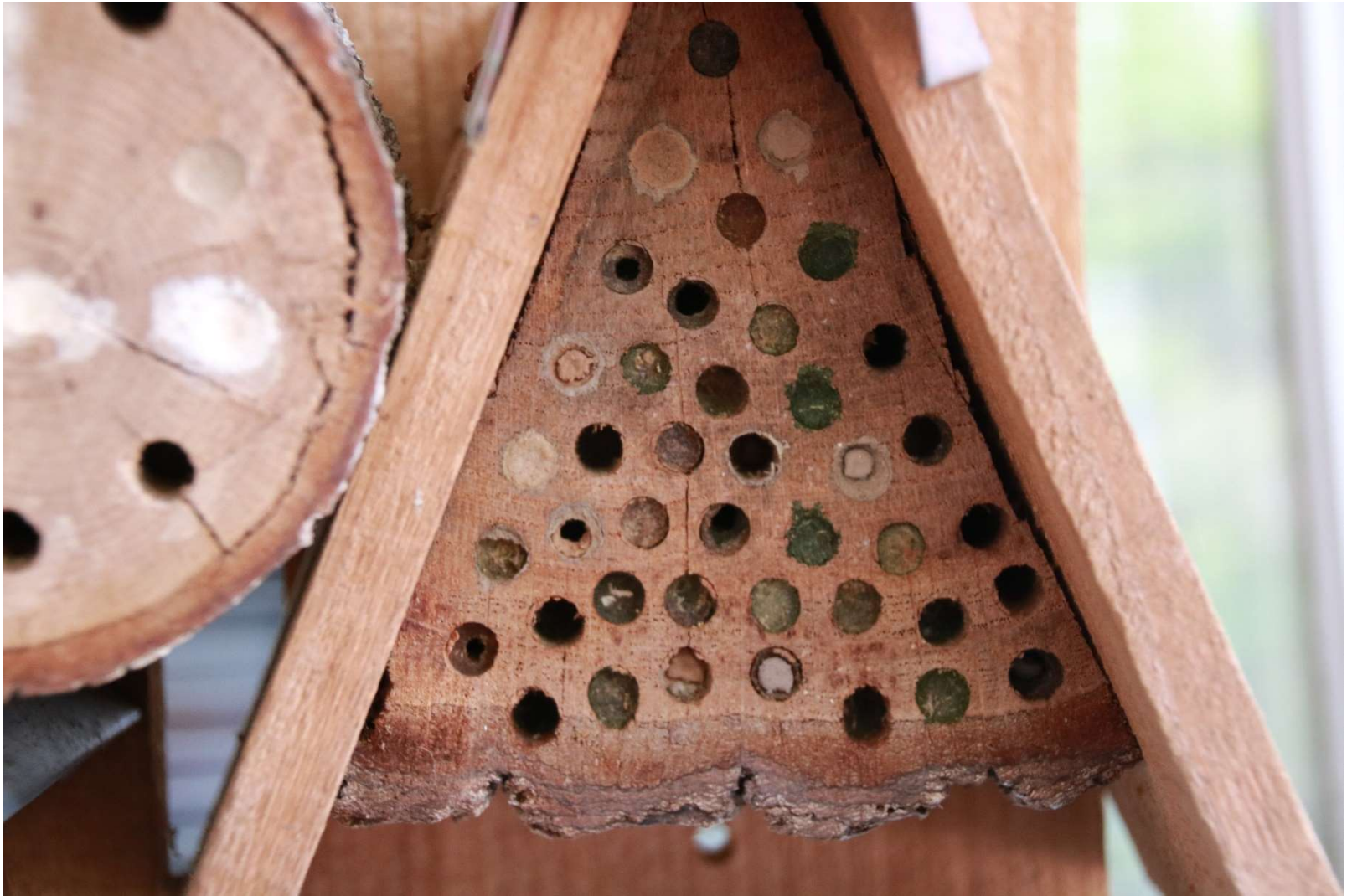


Try a
variety of
kinds of
bee
boxes.
**Bee
creative!**

One minute later....



One year later....

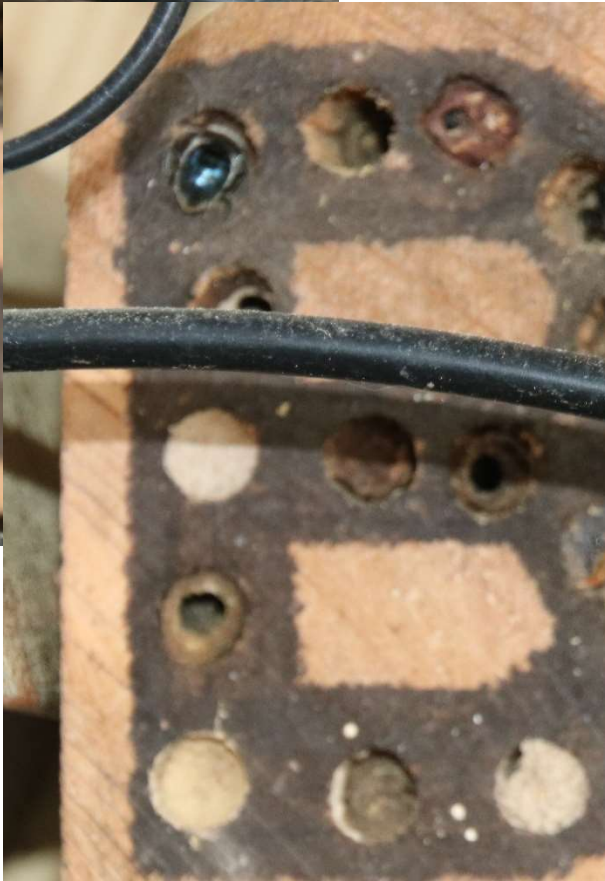
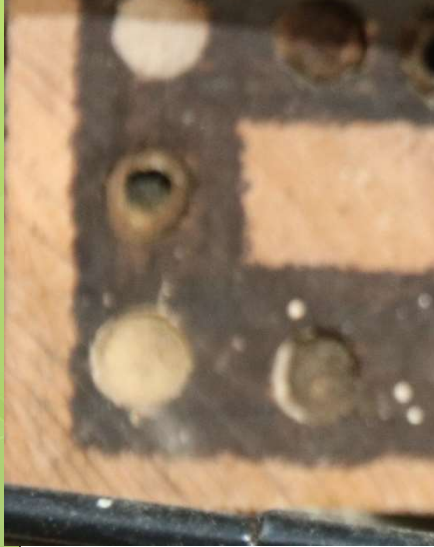






[Redacted area]





Where to find Insect Hotels

Amazon.com – search for “insect hotels” or “bee house”

1-24 of 278 results for Patio, Lawn & Garden : "bee house" Sort by Relevance

Show results for


< Any Category

Patio, Lawn & Garden


- Beekeeping Supplies (6)
- Birdhouses (47)
- Wild Bird Feeders (9)
- Butterflies (5)
- Pest Control Traps (8)
- Garden Border Edging (2)
- Birdbaths (1)
- Pool Maintenance Kits (1)
- Flags (75)
- Flowers (9)
- Lawn Mowers & Outdoor Power Tools (4)
- Outdoor Décor (97)
- Gardening & Lawn Care (34)

+ See more


Related Searches: [mason bee house](#).




Mason Bee House
\$19.95
More Buying Choices
\$19.95 new (2 offers)
★★★★★ 53




Esschert Design WA02 Bee House
\$15.02 ~~\$29.99~~ Prime
Get it by **Tuesday, Nov 4**
More Buying Choices
\$15.02 new (7 offers)
\$22.65 used (1 offer)
★★★★★ 24




Tierra Garden 37-565 A-Frame Mason Bee House
\$13.99 Prime
Get it by **Tuesday, Nov 4**
★★★★★ 9




Coveside Solitary Bee House
\$19.49 Prime
Only 10 left in stock - order soon.
More Buying Choices
\$19.49 new (8 offers)
★★★★★ 12




Wildlife World Interactive Mason Bee Management System House
\$35.99 Prime
Only 15 left in stock - order soon.
More Buying Choices
\$35.99 new (3 offers)




Kinsman Giant Solitary Bee Nester with 60 Tubes
\$12.00 Prime
Only 5 left in stock - order soon.
More Buying Choices
\$12.00 new (2 offers)



Two Group Bee House



Wild and Wolf Bee House



Blossom Bucket Bee House

Patio, Lawn & Garden Product

Hôtel à Abeilles



What do I plant to attract pollinators?

Native plants are best:

- Best adapted to our climate and rainfall
- Bees and butterflies are familiar with these plants

Bee Smart Pollinator App for Smartphones



MASON BEES

FAVORITE COLORS:

- **WHITE**
- **PURPLE**
- **YELLOW**
- **PINK**



They cannot see red.



As we see it.....



As bees see it.....

To Summarize...Easy as 1, 2, 3

1) Protect and create habitat



2) Provide housing



3) Avoid or limit pesticide use





Any Questions?

Stacy Blomquist, Kisatchie National Forest, 318-473-7242
stacy.blomquist@usda.gov or fsbuglady@gmail.com