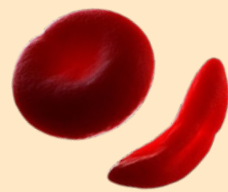


# 504 PLANS FOR STUDENTS WITH SCD

*Tips on creating your 504 plan for students with SCD*

[www.dreamsickle.org](http://www.dreamsickle.org)



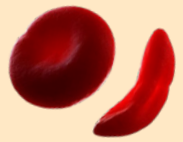
## ADDITIONAL ACCOMODATIONS

### WHAT TO INCLUDE IN 504

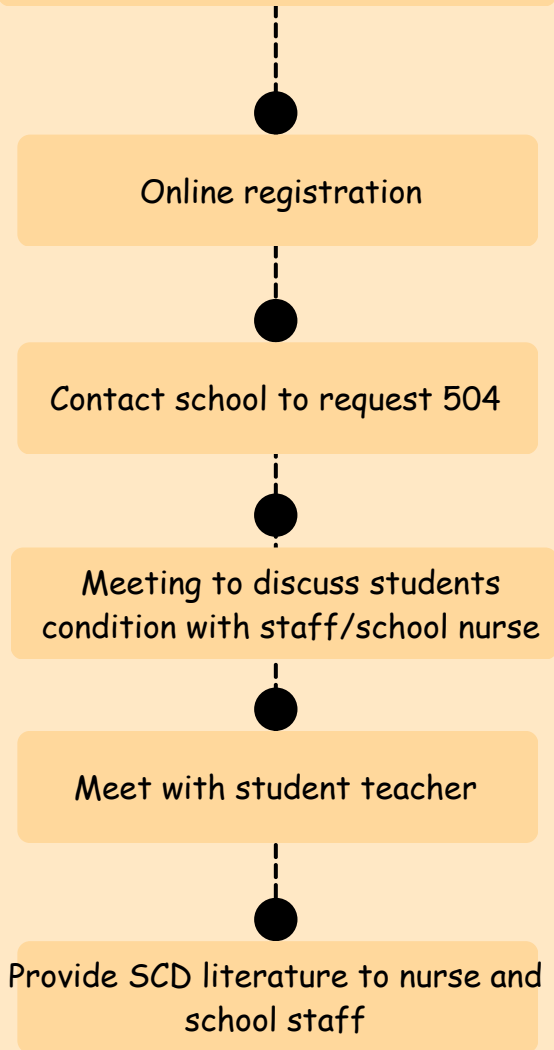
- **Medical Information:** Detailed information about the student's diagnosis, medical condition, and specific healthcare needs related to Sickle Cell Disease.
- **Accommodations:** A list of necessary accommodations to address the student's needs, such as frequent breaks, access to water, permission to carry medication, and additional time for completing assignments or exams.
- **Physical Activity:** Guidelines for modified physical education or physical activity participation to ensure the student's safety, including restrictions on intense or prolonged exertion.
- **Pain Management:** Strategies and procedures for managing pain episodes, including access to pain relief measures, rest periods, and communication with healthcare providers.
- **Attendance and Absences:** Guidelines for handling absences related to sickle cell complications, including procedures for makeup work and flexible attendance policies.
- **Emergency Response:** Clear instructions on recognizing and responding to sickle cell-related emergencies, including when to seek immediate medical attention and who to contact in case of an emergency.

- Blanket
- Class Temp Regulation
- Seating (away from doors/windows, front of class)
- Class Buddy (help to other classes, carry books/bag)
- Recorder to play back lesson
- Sanitation supplies (wipes, sanitizer, to clean desk daily)
- Face Mask
- Homebound Service Option
- Designated seat/locker/storage to limit contamination
- SCD Education/Awareness for class/ staff
- School bus seating (front)
- Roller backpack
- Case of water in class
- Any needs specific to your Warrior





## REGISTRATION PROCESS



**DON'T FORGET YOUR 504 THIS YEAR!**

It's important to note that each 504 plan should be individualized based on the specific needs and circumstances of the student with Sickle Cell Disease. Collaboration between parents/guardians, healthcare providers, and school personnel is crucial in developing a comprehensive and effective plan.



[www.dreamsicklekids.org](http://www.dreamsicklekids.org)

