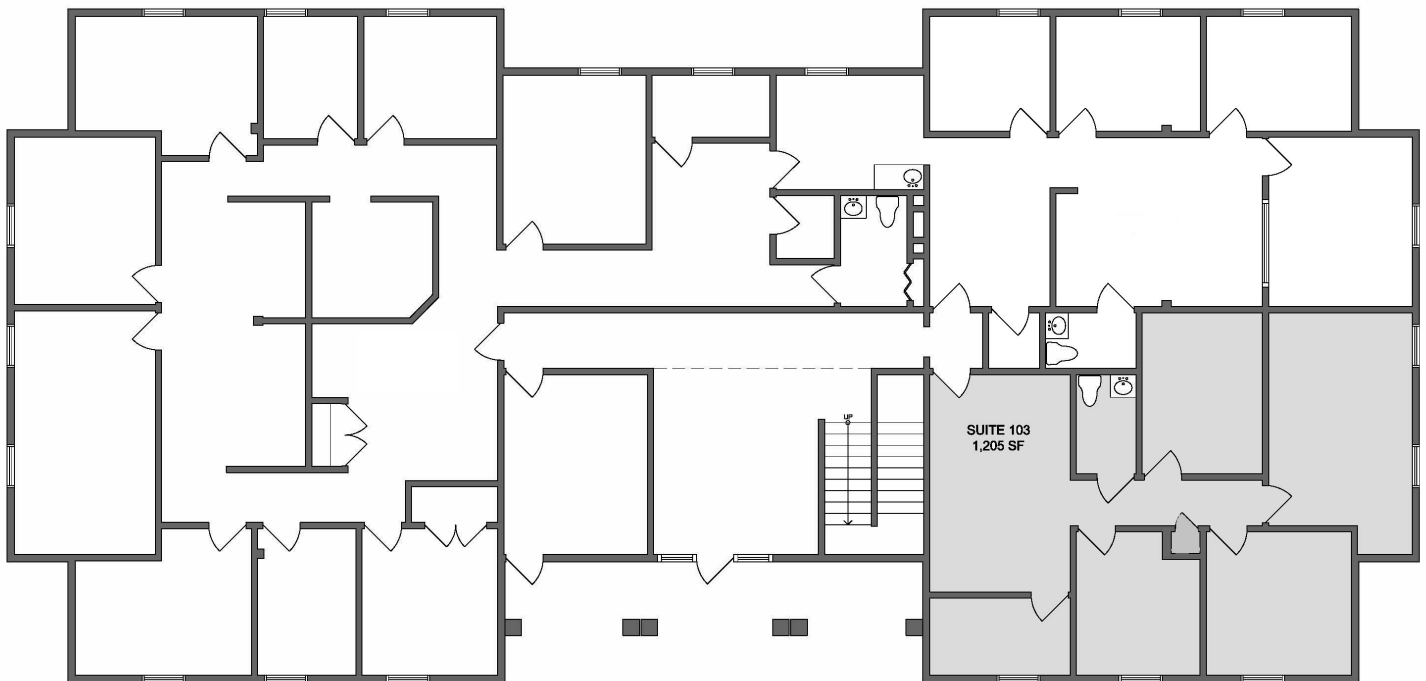


EXECUTIVE HOUSE | Kent Park

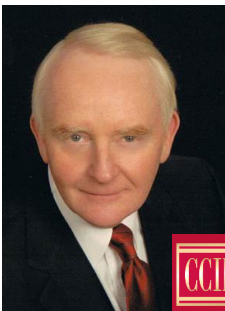
57 DANBURY ROAD
WILTON, CT 06897



AVAILABLE FOR LEASE



Suite 103 1,205 SF



BROKER:

Leland R. Wilson, CCIM
203.762.2200 | wilson@ccim.net
43 Danbury Road, Wilton, CT 06897
wilsonproperties.com



AVAILABLE FOR LEASE

- SPACE OFFERED** ● 1,205 SF Suite 103
- BUILDING TYPE** ● Executive Offices
- BUILDING SIZE** ● 10,800 SF
- ZONING** ● Design Enterprise
- OCCUPANCY** ● February 2024
- LEASE RATE** ● \$30/SF +elec.

FEATURES

- South Wilton, Route 7 Location
- Kent Park Executive House
- Newly Renovated Lobby & Landscaping
- 4.5 to 1 Parking Ratio
- EV Charging Station
- Keypad Entry
- 24-Hour Individual HVAC Control
- Cleaning Included
- Gas Heating
- City Water / City Sewer

AMENITIES

- ✓ Private Bath in Suite
- ✓ Onsite Storage Available
- ✓ Walk to Restaurants & Shopping

