

Segment 1 - North Palm Springs

Legend

- CV Link Route**
- Alignment Determined
 - Alignment with Alternatives
 - Community Connectors
 - Future Extensions

Destinations

- Commercial
- Public Amenities
- Development Opportunity
- Natural Features
- Schools

Access Points/Rest Areas

- Regional
- Local
- Commercial
- Neighborhood
- Highway/Freeway

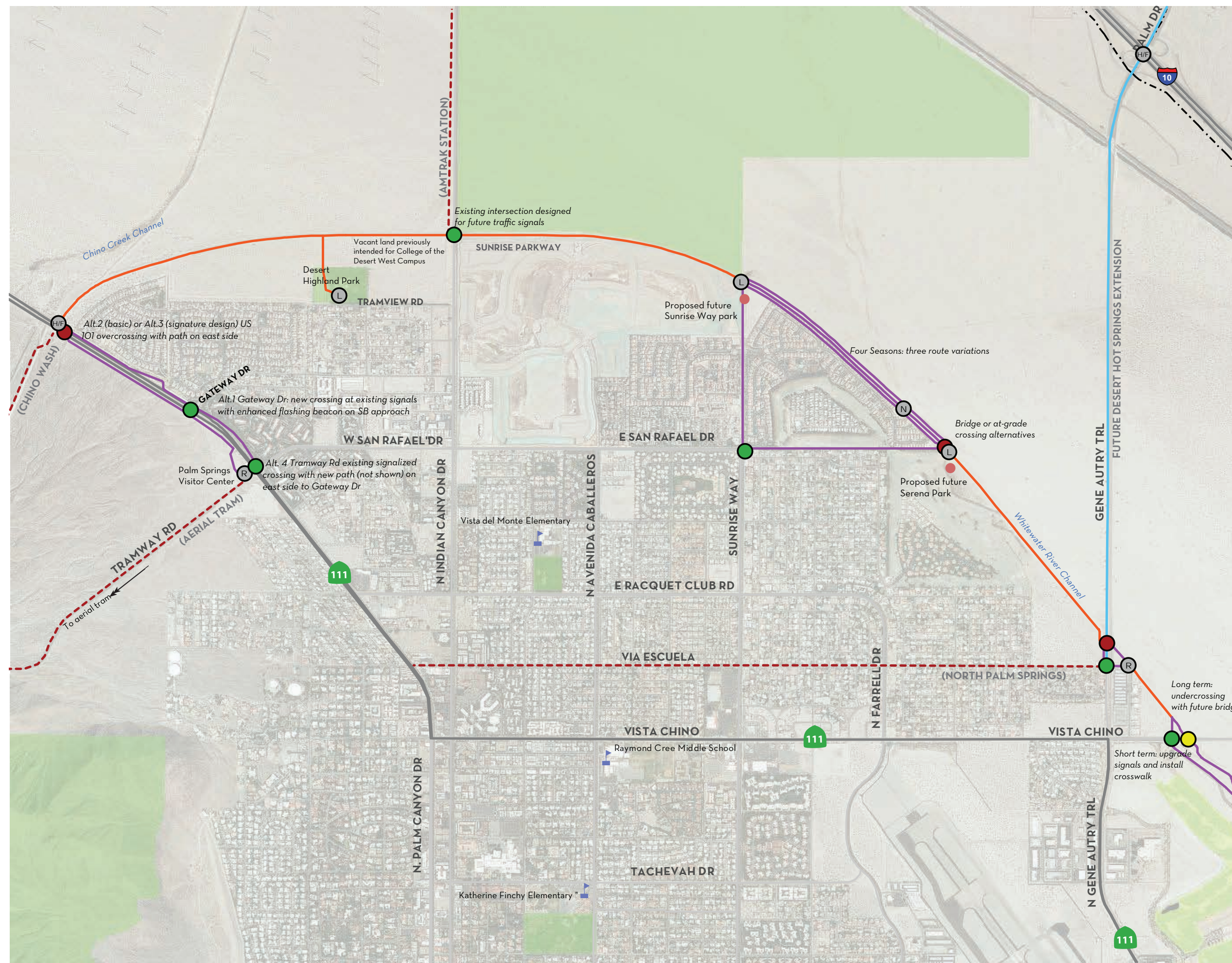
Crossings

- At-Grade Crossing
- Undercrossing
- Overcrossing/Bridge

- Parks
- Golf Courses
- City Boundary
- Existing Trails



Data obtained from CVAG & Riverside County Map revised November 18, 2015



Segment 2 - Central Palm Springs

Legend

- CV Link Route**
- Alignment Determined
 - Alignment with Alternatives
 - Community Connectors
 - Future Extensions

Destinations

- Commercial
- Public Amenities
- Development Opportunity
- Natural Features
- Schools

Access Points/Rest Areas

- Regional
- Local
- Commercial
- Neighborhood
- Highway/Freeway

Crossings

- At-Grade Crossing
- Undercrossing
- Overcrossing/Bridge

- Parks
- Golf Courses
- City Boundary
- Existing Trails



Data obtained from CVAG & Riverside County
Map revised November 18, 2015



Short term: upgrade signals and install crosswalk
Long term: undercrossing with future bridge

Low water undercrossing

Low water undercrossing

Segment 2a - Tahquitz Creek

Legend

- CV Link Route**
- Alignment Determined
 - Alignment with Alternatives
 - Community Connectors
 - Future Extensions

Destinations

- Commercial
- Public Amenities
- Development Opportunity
- Natural Features
- Schools

Access Points/Rest Areas

- Regional
- Local
- Commercial
- Neighborhood
- Highway/Freeway

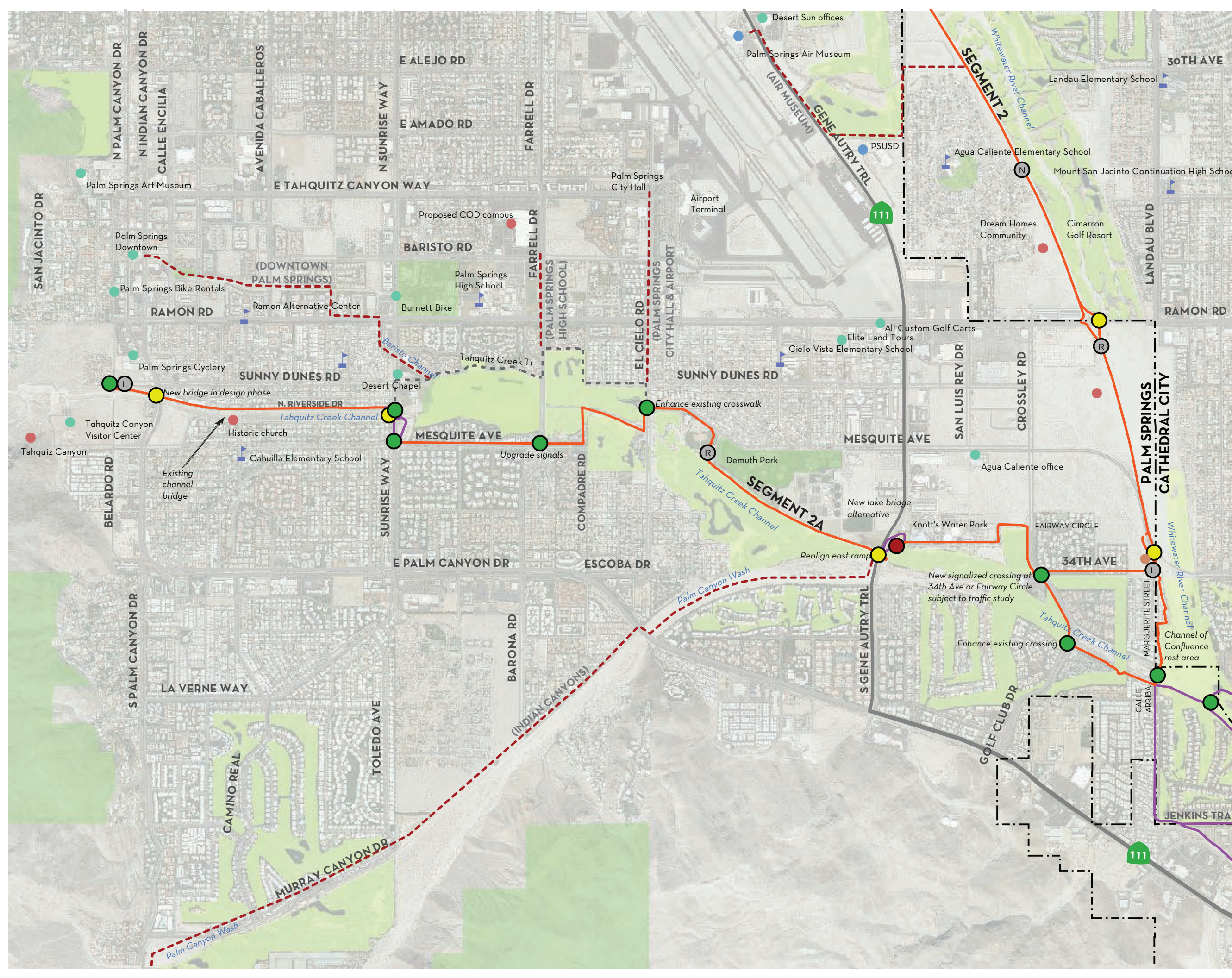
Crossings

- At-Grade Crossing
- Undercrossing
- Overcrossing/Bridge

- Parks
- Golf Courses
- City Boundary
- Existing Trails



Data obtained from CVAG & Riverside County
Map revised November 18, 2015



Segment 3 - Cathedral City

Legend

CV Link Route

- Alignment Determined
- Alignment with Alternatives
- - - Community Connectors
- Future Extensions

Destinations

- Commercial
- Public Amenities
- Development Opportunity
- Natural Features
- ▤ Schools

Access Points/Rest Areas

- R Regional
- L Local
- C Commercial
- N Neighborhood
- H/F Highway/Freeway

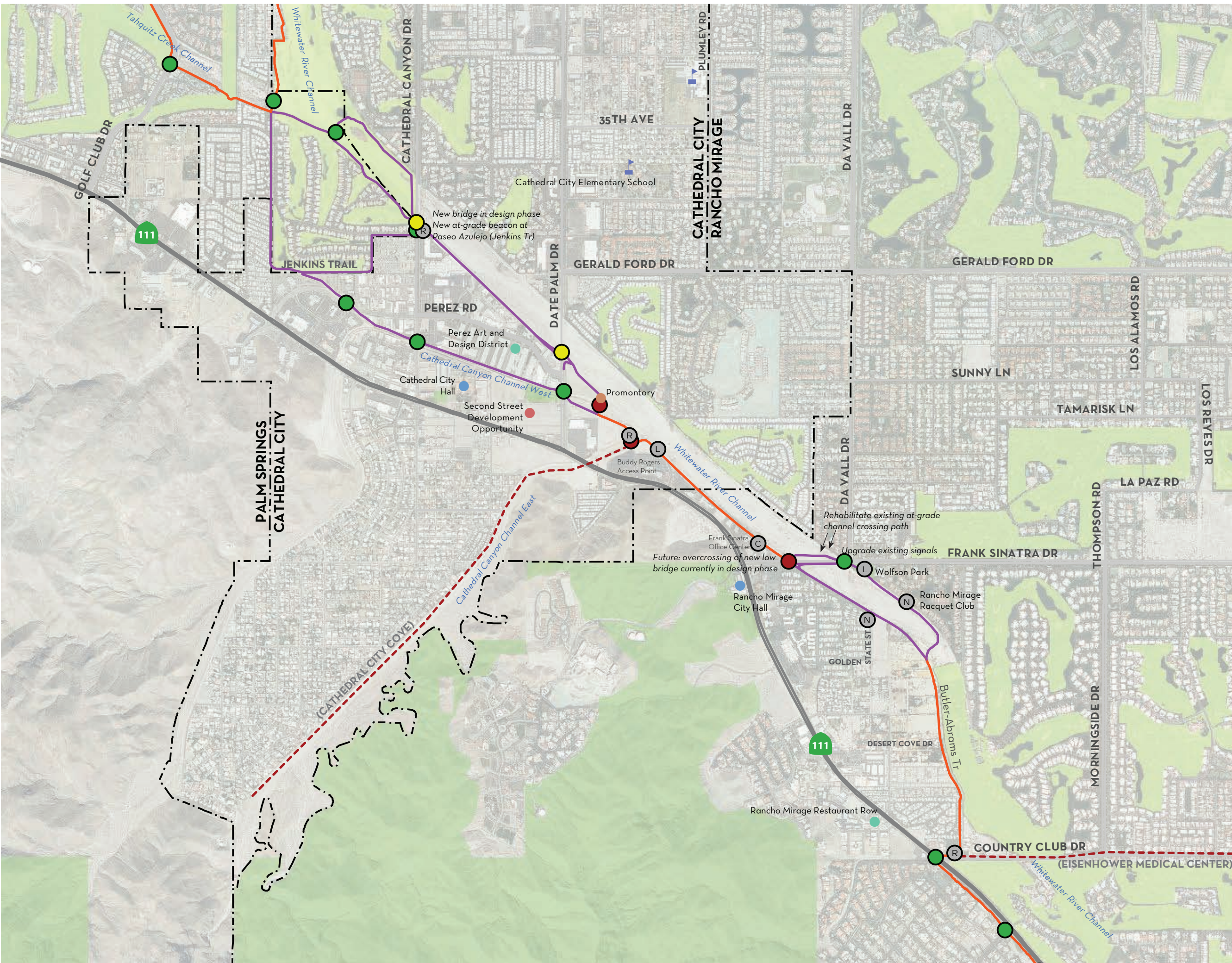
Crossings

- At-Grade Crossing
- Undercrossing
- Overcrossing/Bridge

- Parks
- Golf Courses
- City Boundary
- Existing Trails



Data obtained from CVAG & Riverside County
Map revised November 18, 2015



Segment 4 - Rancho Mirage

Legend

- CV Link Route**
- Alignment Determined
 - Alignment with Alternatives
 - Community Connectors
 - Future Extensions

Destinations

- Commercial
- Public Amenities / Health Care
- Development Opportunity
- Natural Features
- Schools

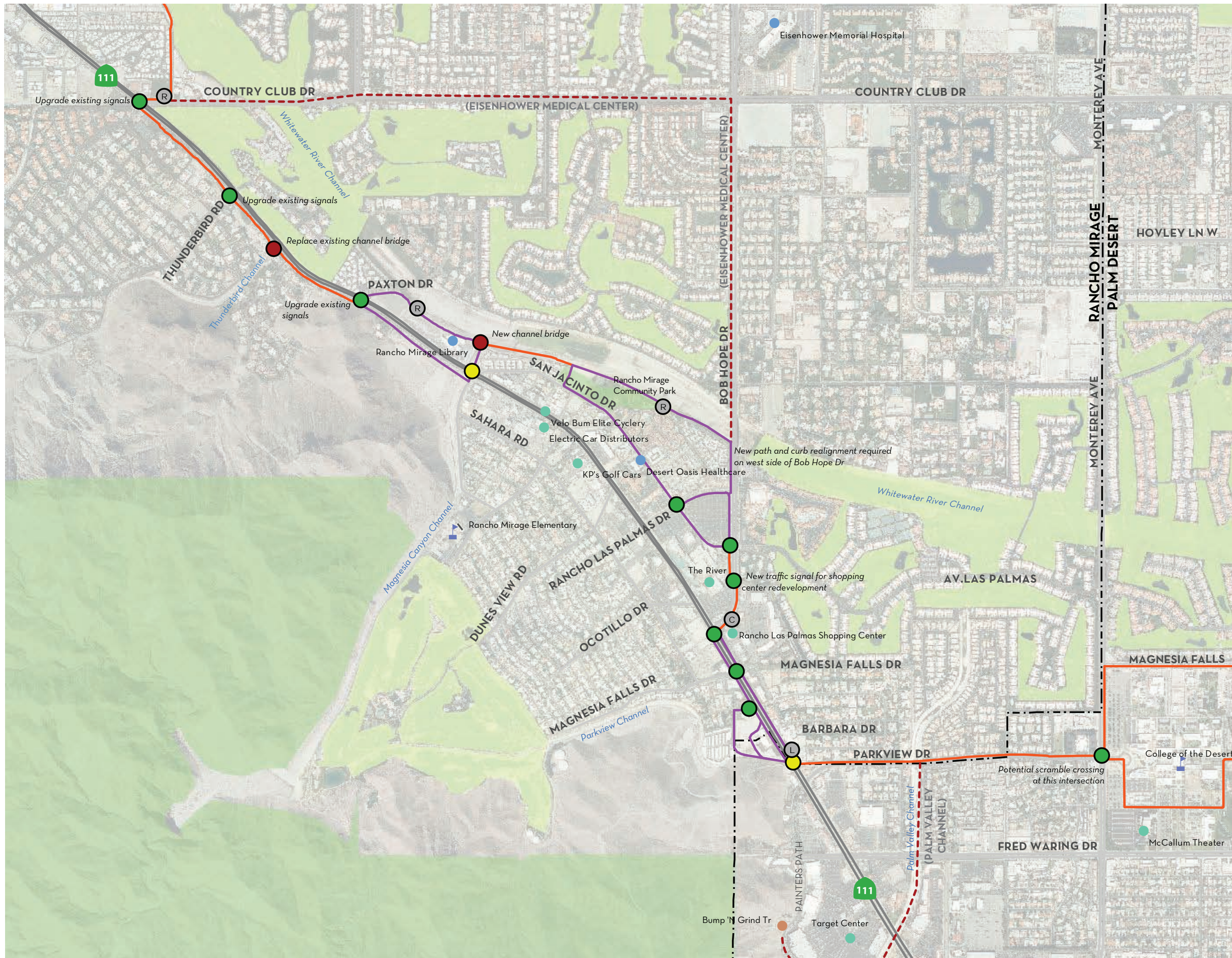
Access Points/Rest Areas

- Regional
- Local
- Commercial
- Neighborhood
- Highway/Freeway

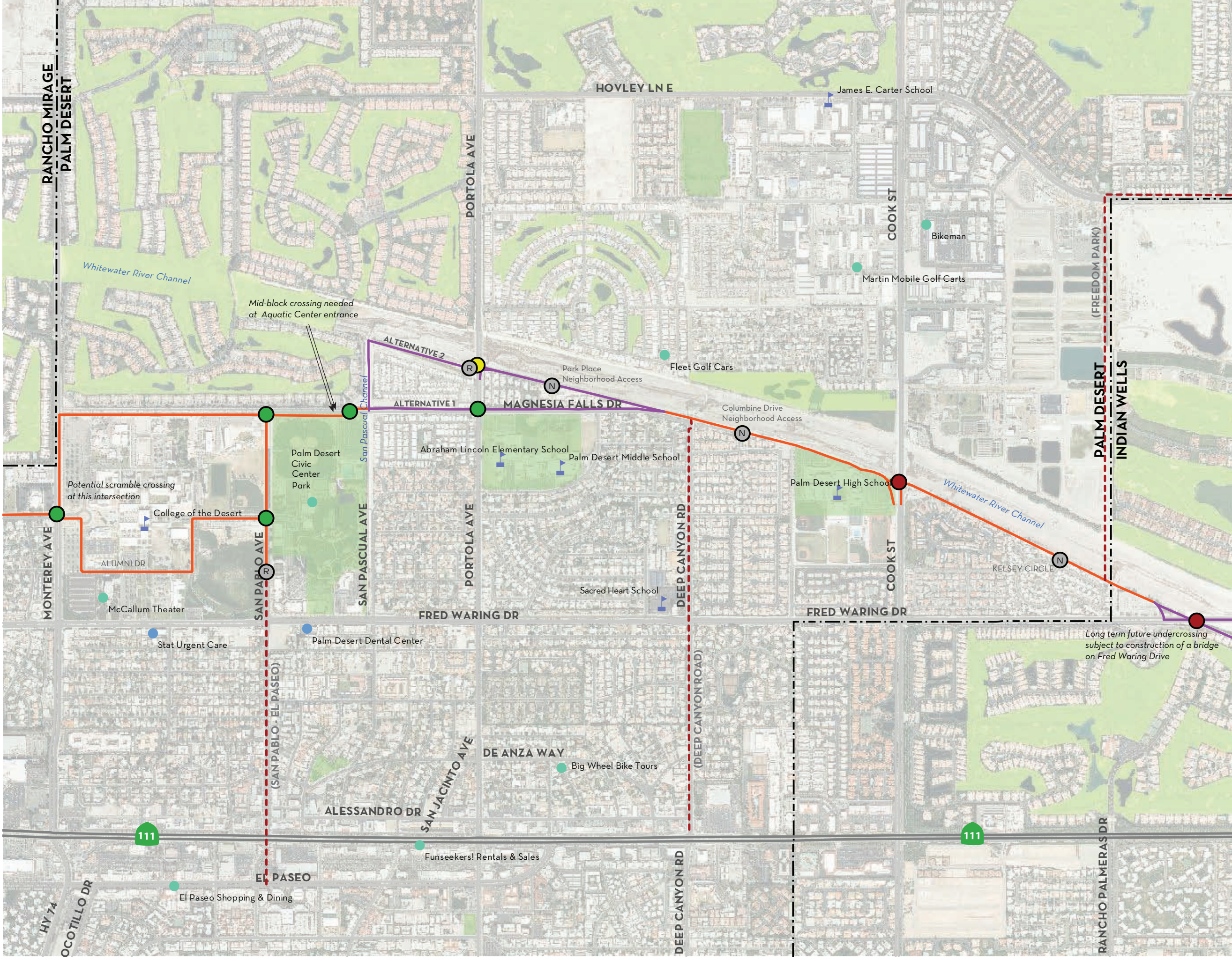
Crossings

- At-Grade Crossing
- Undercrossing
- Overcrossing/Bridge

- Parks
- Golf Courses
- City Boundary
- Existing Trails



Segment 5 - Palm Desert



Legend

- CV Link Route**
- Alignment Determined
 - Alignment with Alternatives
 - Community Connectors
 - Future Extensions

Destinations

- Commercial
- Public Amenities / Health Care
- Development Opportunity
- Natural Features
- ▬ Schools

Access Points/Rest Areas

- R Regional
- L Local
- C Commercial
- N Neighborhood
- H/F Highway/Freeway

Crossings

- At-Grade Crossing
- Undercrossing
- Overcrossing/Bridge

- Parks
- Golf Courses
- City Boundary
- Existing Trails



Segment 6 - Indian Wells

Legend

- CV Link Route**
- Alignment Determined
 - Alignment with Alternatives
 - Community Connectors
 - Future Extensions

Destinations

- Commercial
- Public Amenities / Health Care
- Development Opportunity
- Natural Features
- Schools

Access Points/Rest Areas

- Regional
- Local
- Commercial
- Neighborhood
- Highway/Freeway

Crossings

- At-Grade Crossing
- Undercrossing
- Overcrossing/Bridge

- Parks
- Golf Courses
- City Boundary
- Existing Trails



Data obtained from CVAG & Riverside County
Map revised November 18, 2015



Long term future undercrossing subject to construction of a bridge on Fred Waring Drive

111

111

Segment 7 - La Quinta

Legend

- CV Link Route**
- Alignment Determined
 - Alignment with Alternatives
 - Community Connectors
 - Future Extensions

- Destinations**
- Commercial
 - Public Amenities
 - Development Opportunity
 - Natural Features
 - Schools

- Access Points/Rest Areas**
- Regional
 - Local
 - Commercial
 - Neighborhood
 - Highway/Freeway

- Crossings**
- At-Grade Crossing
 - Undercrossing
 - Overcrossing/Bridge

- Parks
- Golf Courses
- City Boundary
- Existing Trails



Data obtained from CVAG & Riverside County Map revised November 18, 2015



Segment 8 - Indio

Legend

- CV Link Route**
- Alignment Determined
 - Alignment with Alternatives
 - Community Connectors
 - Future Extensions

- Destinations**
- Commercial
 - Public Amenities
 - Development Opportunity
 - Natural Features
 - Schools

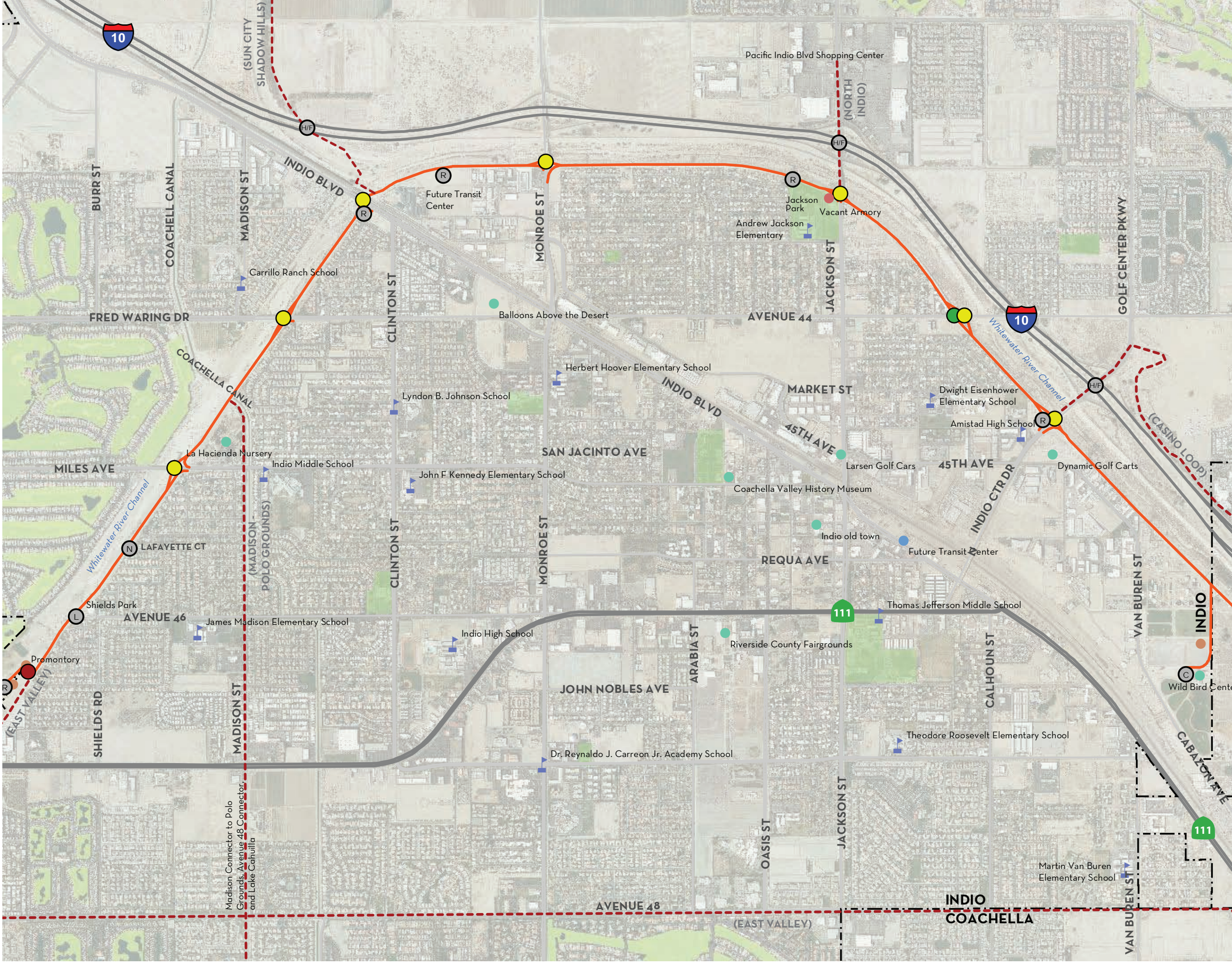
- Access Points/Rest Areas**
- Regional
 - Local
 - Commercial
 - Neighborhood
 - Highway/Freeway

- Crossings**
- At-Grade Crossing
 - Undercrossing
 - Overcrossing/Bridge

- Parks
- Golf Courses
- City Boundary
- Existing Trails



Data obtained from CVAG & Riverside County Map revised November 18, 2015



Segment 9 - East Native Lands

Legend

- CV Link Route**
- Alignment Determined
 - Alignment with Alternatives
 - Community Connectors
 - Future Extensions

Destinations

- Commercial
- Public Amenities
- Development Opportunity
- Natural Features
- ▤ Schools

Access Points/Rest Areas

- R Regional
- L Local
- C Commercial
- N Neighborhood
- H/F Highway/Freeway

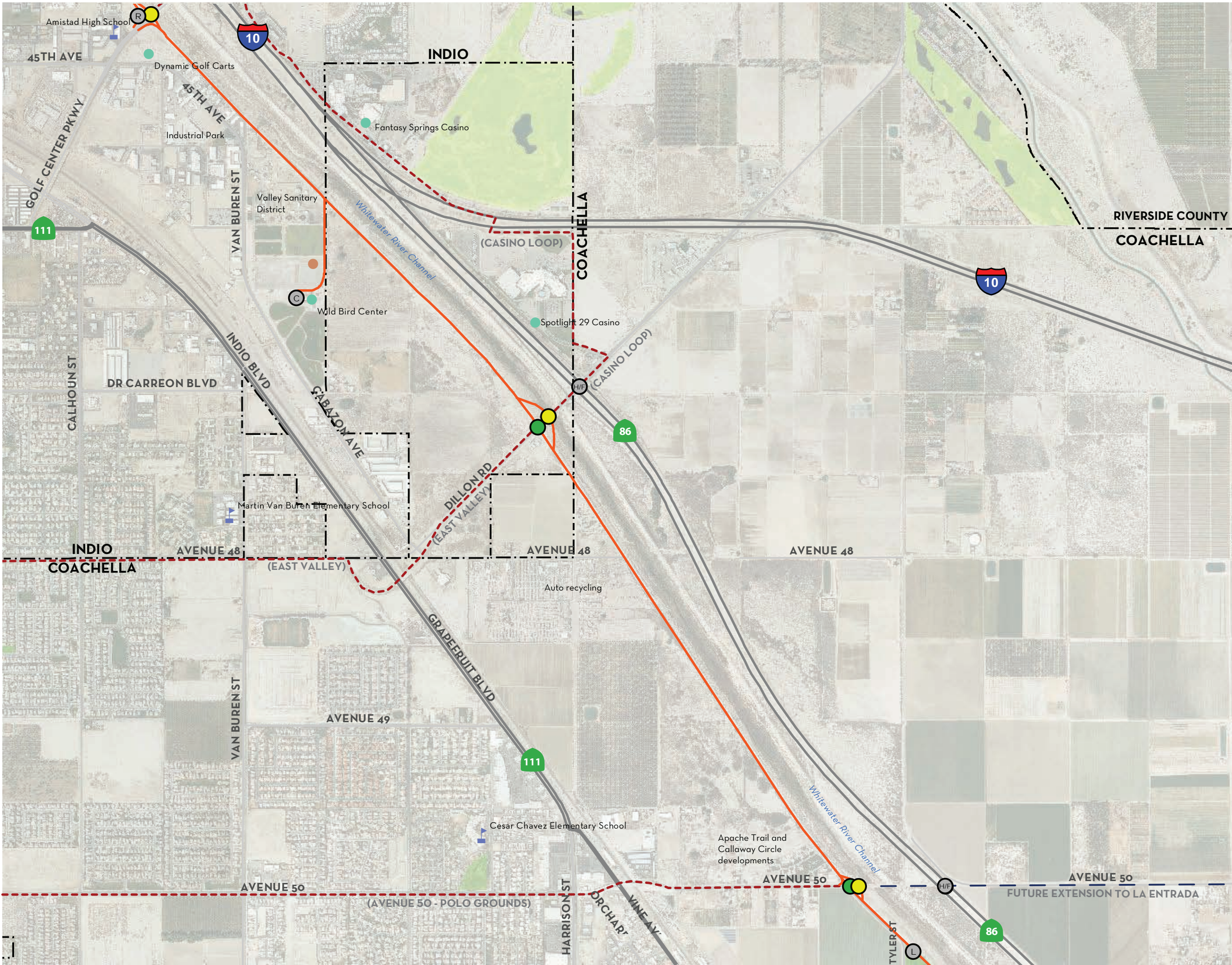
Crossings

- At-Grade Crossing
- Undercrossing
- Overcrossing/Bridge

- Parks
- Golf Courses
- City Boundary
- Existing Trails



Data obtained from CVAG & Riverside County Map revised November 18, 2015



Segment 10 - Coachella

Legend

- ### CV Link Route
- Alignment Determined
 - Alignment with Alternatives
 - Community Connectors
 - Future Extensions

Destinations

- Commercial
- Public Amenities
- Development Opportunity
- Natural Features
- ▤ Schools

Access Points/Rest Areas

- R Regional
- L Local
- C Commercial
- N Neighborhood
- H/F Highway/Freeway

Crossings

- At-Grade Crossing
- Undercrossing
- Overcrossing/Bridge

- Parks
- Golf Courses
- City Boundary
- Existing Trails



Data obtained from CVAG & Riverside County Map revised November 18, 2015

