



www.zxcollabs.com



Contents

Services

Past Projects

Team



Services



Services

- **Architectural and Interior Design**
 - Conceptual Design
 - Design Development
- **BIM Modeling and Documentation**
 - Design Development (LOD 100, 200, 300)
 - Construction and Tender Documentation (LOD 300, 350)
 - Quantity Take-Off
 - 4D/5D Scheduling
 - Shop Drawing (LOD 400)
 - As-Built Modeling (LOD 500)
 - Point Cloud / Scan to BIM
 - CAD to BIM
 - Dynamo, Revit API and Automation Services
- **Matterport Scans (in India Only)**
 - Project Monitoring and Reporting
 - Digital Twin Documentation



Past Projects



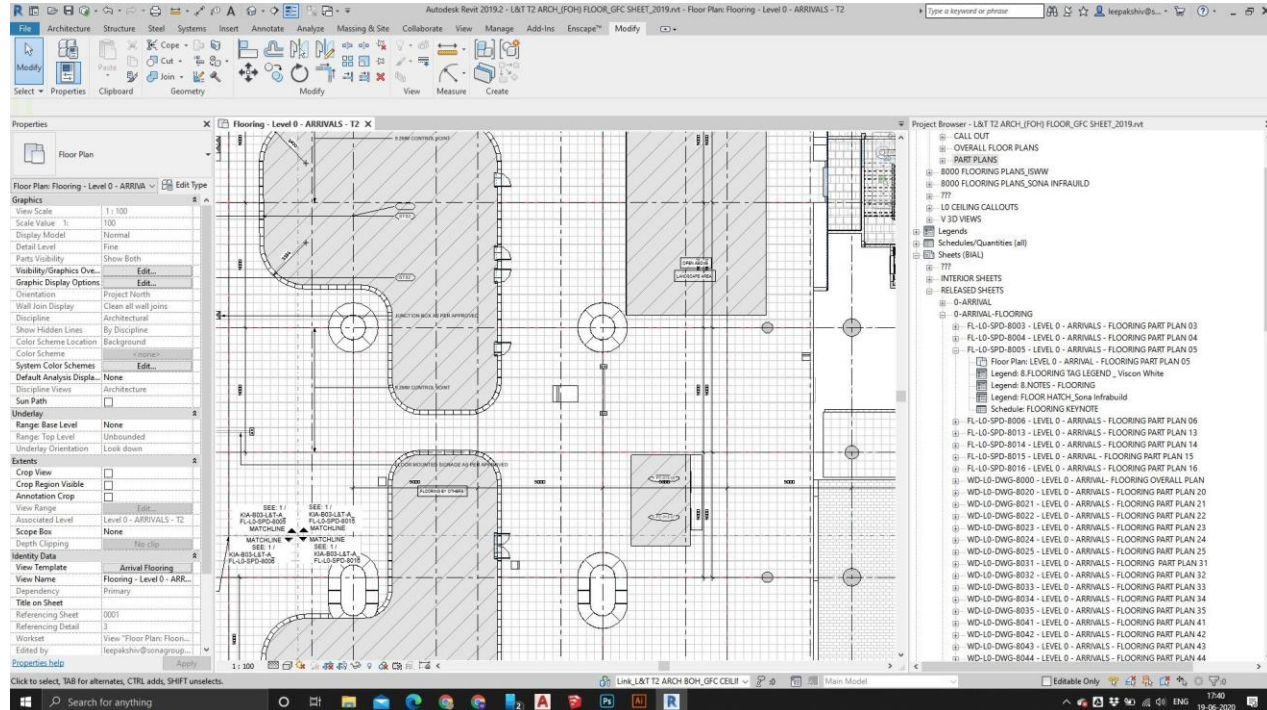
BIM Projects



Bangalore International Airport Ltd. (BIAL) (Terminal T2 Expansion)

LOD - 350, 400
Area - 200,000 sqft. approx.

- Design Development
- BIM Model Optimization
- Parametric Modeling
- Shop Drawing Preparation
- MEP Coordination
- Document Management

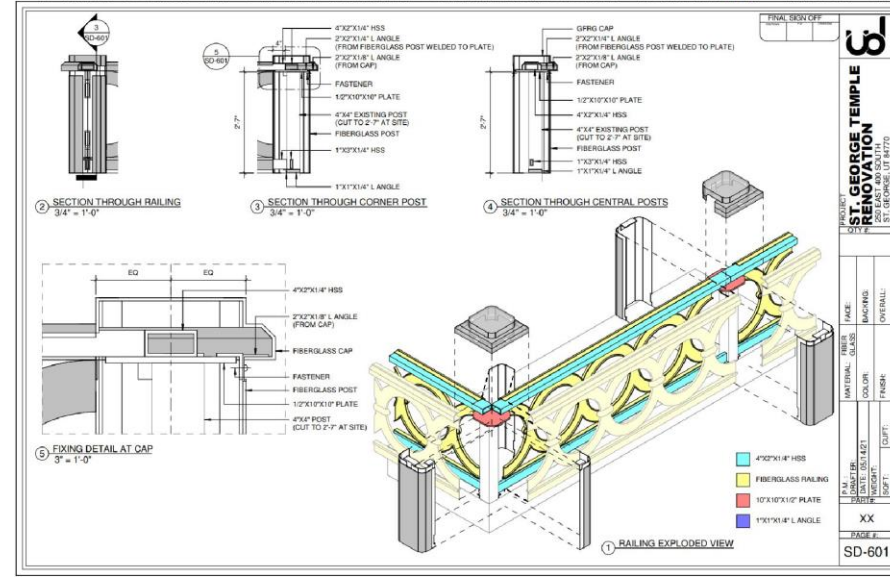
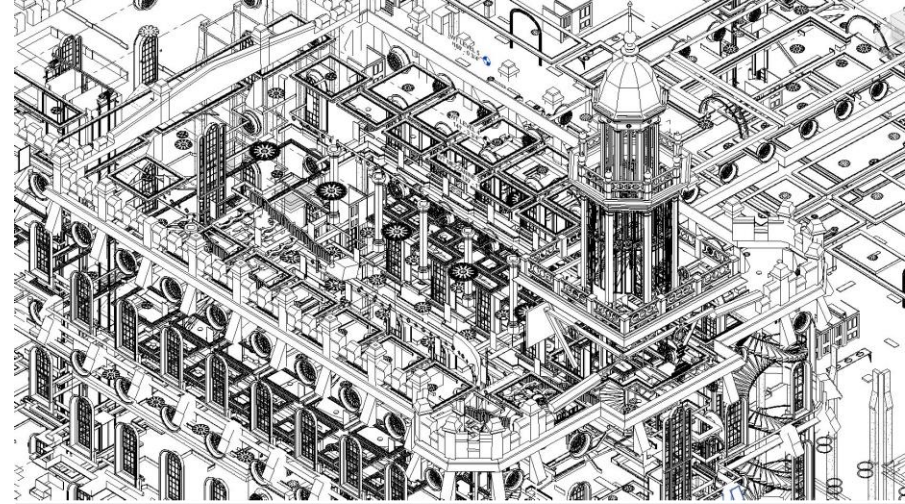


St. George Utah Temple

LOD - 400

Area - 110,000 sqft. approx.

- Quantity Takeoff
- RFI and Design Coordination
- Clash Detection
- Clash Resolution
- Parametric Modeling
- Family Development
- BIM Model Optimization
- Shop Drawing Preparation
- Shop Ticket Preparation

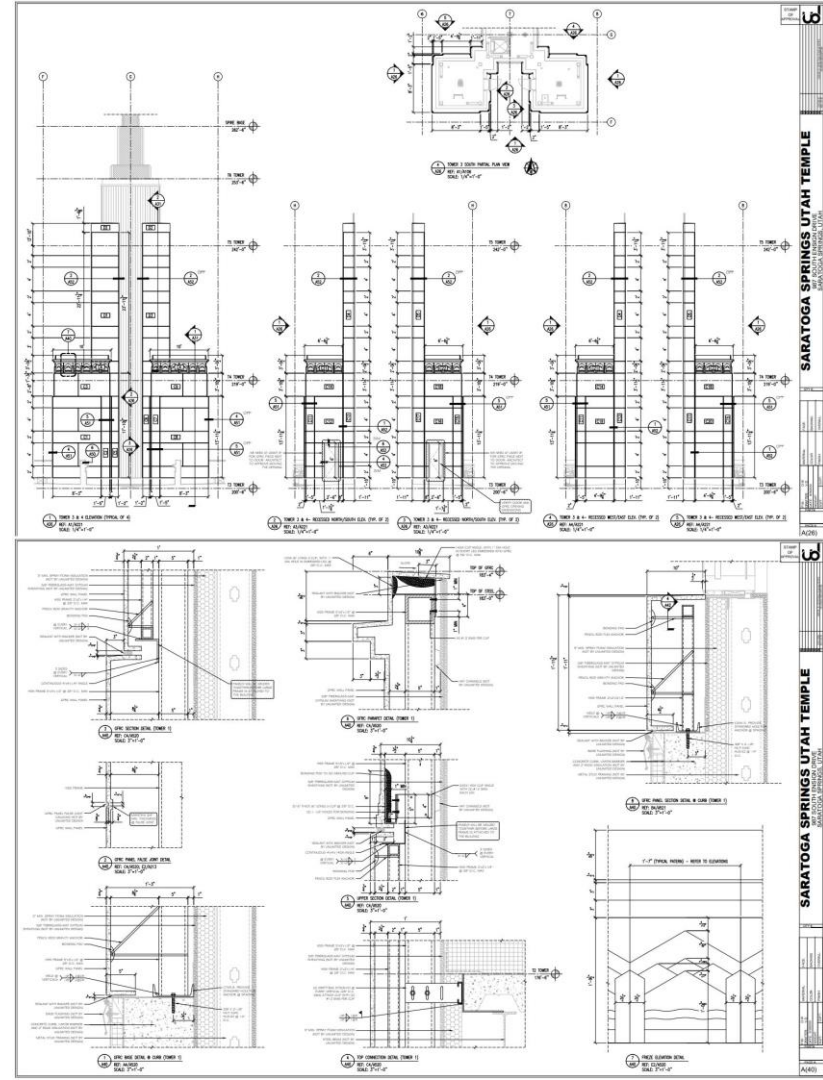


Saratoga Springs Utah Temple

LOD - 400

Area - 87,000 sqft. approx.

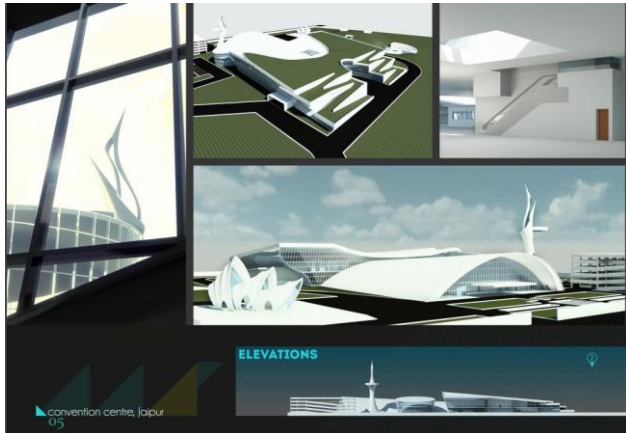
- Quantity Takeoff
- RFI and Design Coordination
- Shop Drawing Preparation
- Shop Ticket Preparation



Convention Centre

LOD - 200
 Area - 20,000 sqft. approx.

- Conceptual Design



CONVENTION CENTRE, JAIPUR

FORM | LANDMARK DESIGN | GREEN

AREA : 66600 SQM.
 FAR : 1.25
 MOS : 7.5M

LOCATION: JAIPUR, RAJASTHAN
 CLIMATE: SEMI ARID CLIMATE

1 GREENSCAPED TERRACE

1. Access from Ground Level via ramps with recreation functions at every landing and terrace
2. Low-e glass to restrict infrared but allows light
3. Greenscaped terrace help reduce the cooling load below by absorbing heat
4. Space below serves as main convention space

1 OAT

1. OAT for informal use in moderate conditions
2. Presence of water body helps in controlling humidity

2 ADMINISTRATION

2 PARKING

Approx. 600 cars

3 TOWER

1. Visual Connectivity element
2. Terrace sports a viewing deck

4 COMMON PARKING

1. Light wells to facilitate light and ventilation
2. Covered by landscape
3. 3 Floors of parking (approx. 350 cars)

5 ART PAVILION

1. Neo-futuristic pavilion

The location being in the midst of deserts, the form was imagined to blend and adapt to the surrounding forms of sand dunes. White colour was chosen to minimize the amount of heat that would be transferred through the thermal mass. The convention centre can host upto 4 events at a time which is an unconventional level of efficiency.

PLANS

GROUND FLOOR

- 1 PLEHARY HALL
- 2 AUDITORIUM
- 3 AV ROOM
- 4 CAFETERIA
- 5 KITCHEN
- 6 RECEPTION/ HELP DESK
- 7 SERVICE ROOM
- 8 TOILETS
- 9 BANQUET SPACE
- 10 EXHIBITION SPACE
- 11 SECURITY/ EMERGENCY LIFT
- 12 DISPENSARY/ FIRST AID ROOM
- 13 STAIRCASE/ ESCALATORS
- 14 ADMINISTRATION
- 15 TOWER LOBBY
- 16 VIP CONCOURSE
- 17 TRANSLATOR ROOM

FIRST FLOOR

- 1 CONVENTION ROOM
- 2 AUDITORIUM
- 3 BOARD ROOM
- 4 MEETING ROOM
- 5 VIP LOUNGE
- 6 RECEPTION/ HELP DESK
- 7 SERVICE ROOM
- 8 TOILETS
- 9 GENERATOR ROOM
- 10 SECURITY ROOM
- 11 SECURITY/ EMERGENCY LIFT
- 12 LIBRARY
- 13 STAIRCASE/ ESCALATORS

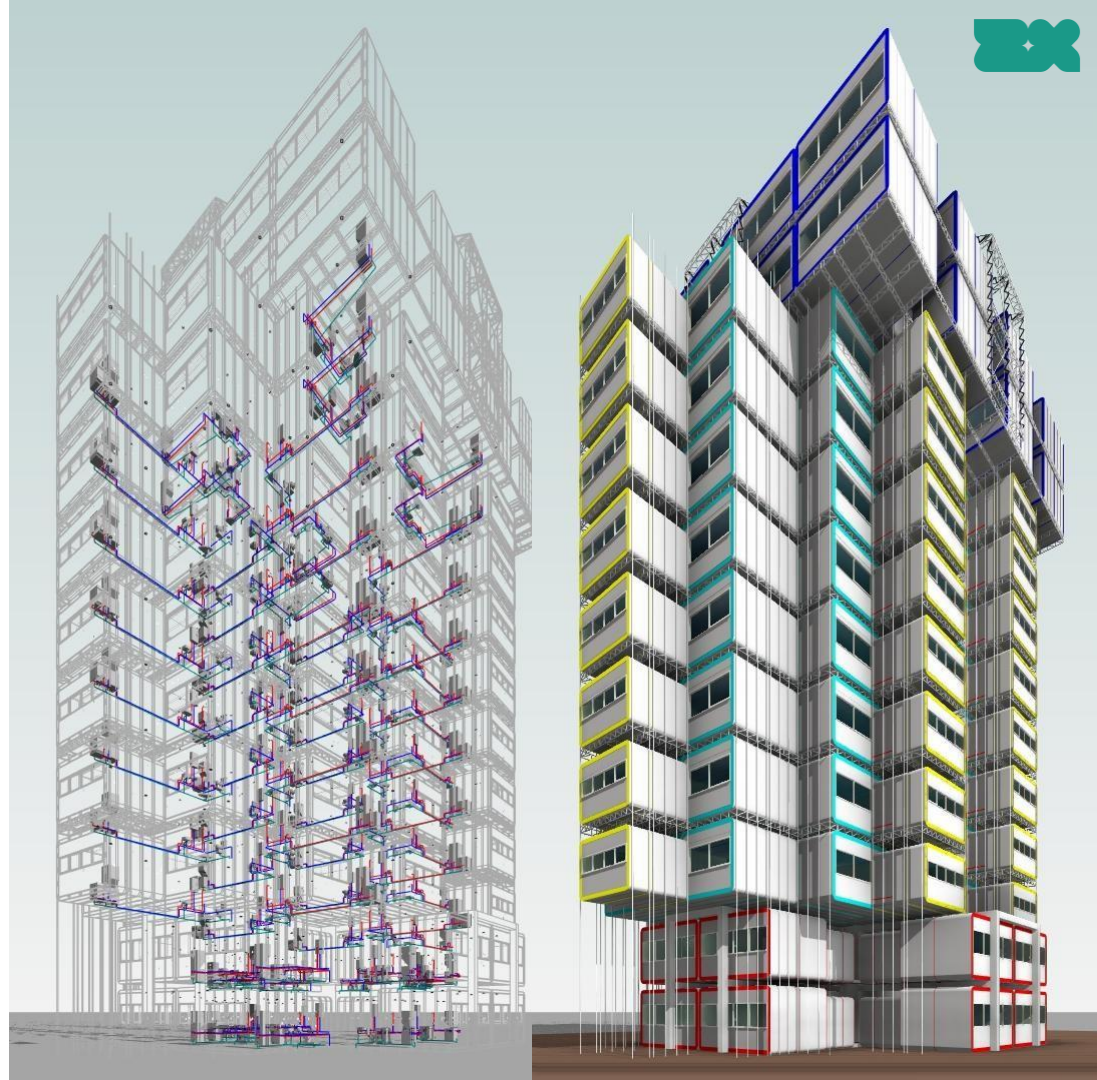
convention centre, jaipur 06

O-cube Modular Residential (G+11)

LOD - 100

Area - 60,000 sqft. approx.

- Concept Development
- Parametric Modeling
- Concept Visualization
- Plumbing Design
- Clash Detection
- Composite Panel Wall Design



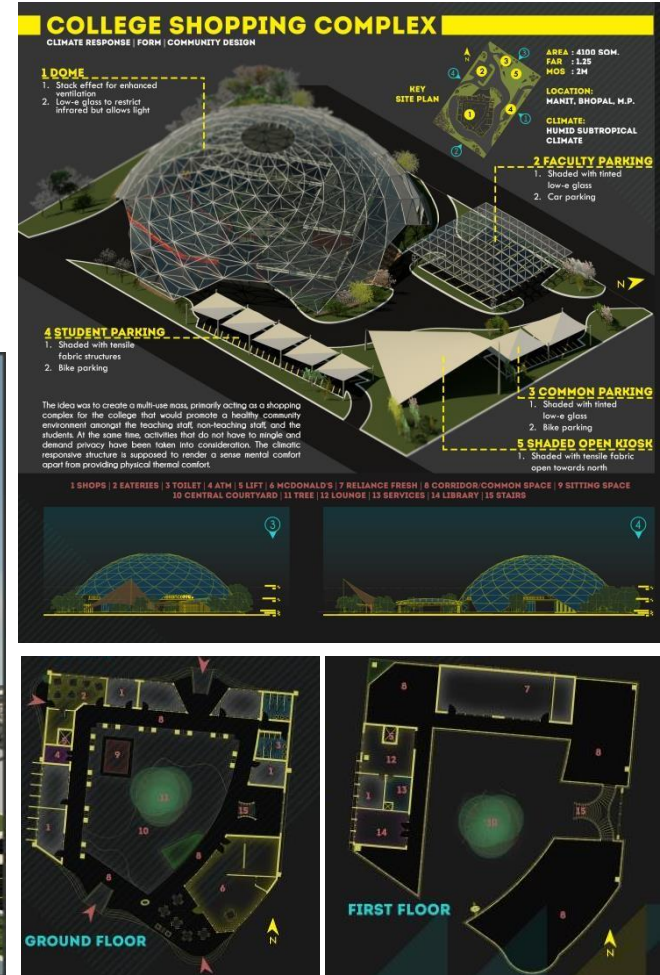
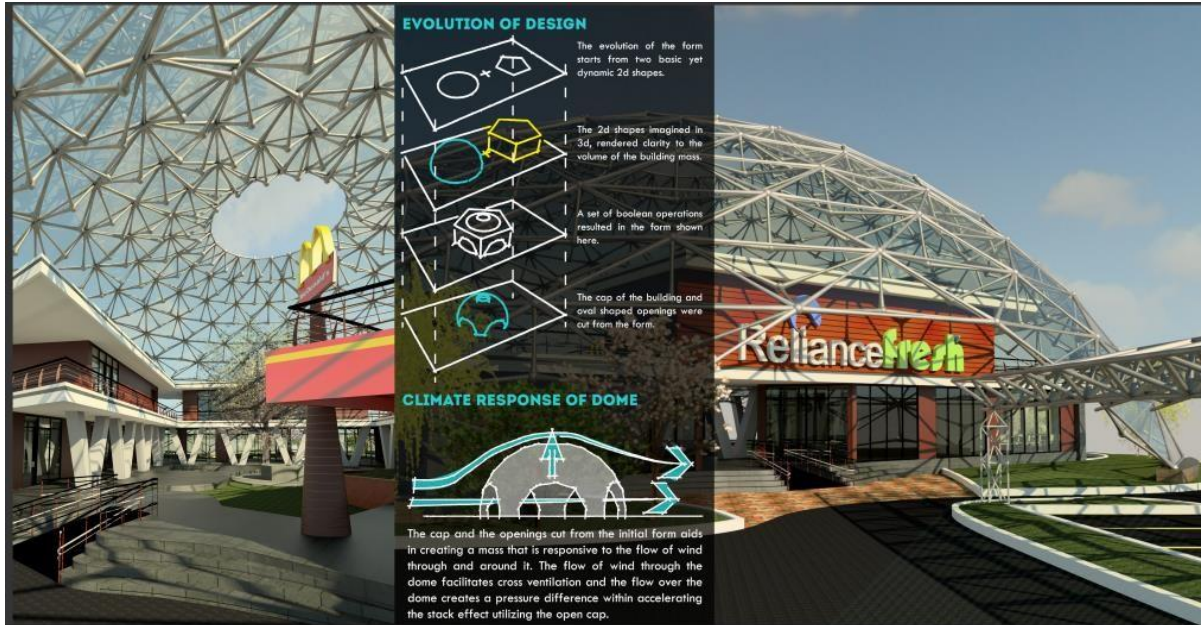


College Shopping Complex, Bhopal

LOD - 200

Area - 20,000 sqft. approx.

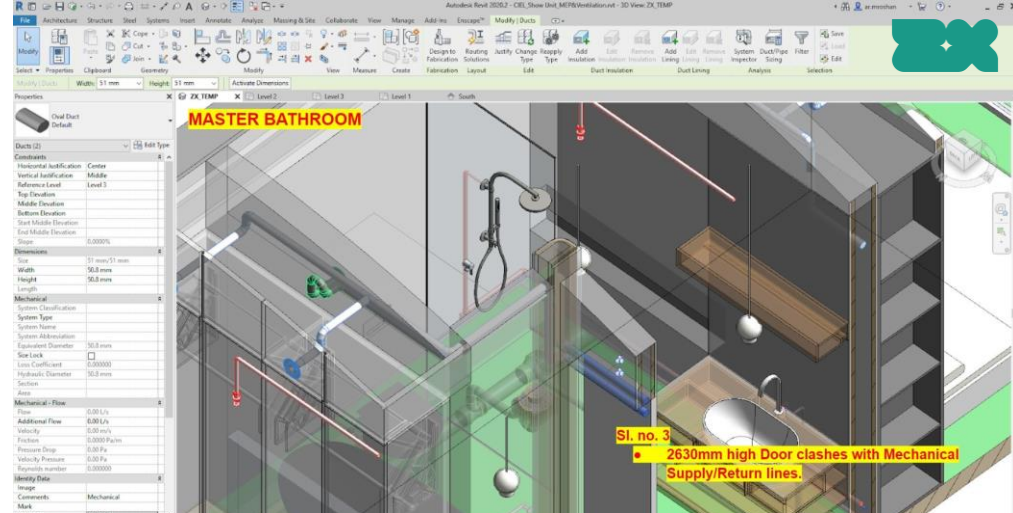
- Conceptual Design



S-cube Modular Residential (G+1)

LOD - 100, 350, 400
Area - 2,700 sqft. approx.

- Concept Development
- Parametric Modeling
- Concept Visualization
- Design Development & Progress Tracking
- Document and Access Management
- HVAC, Plumbing Design
- Permit Set Development
- Clash Detection
- Civil & MEP Coordination
- BamCore Wall Design
- Cut Sheet Design for CNC
- Quantity Takeoff
- Construction Documentation

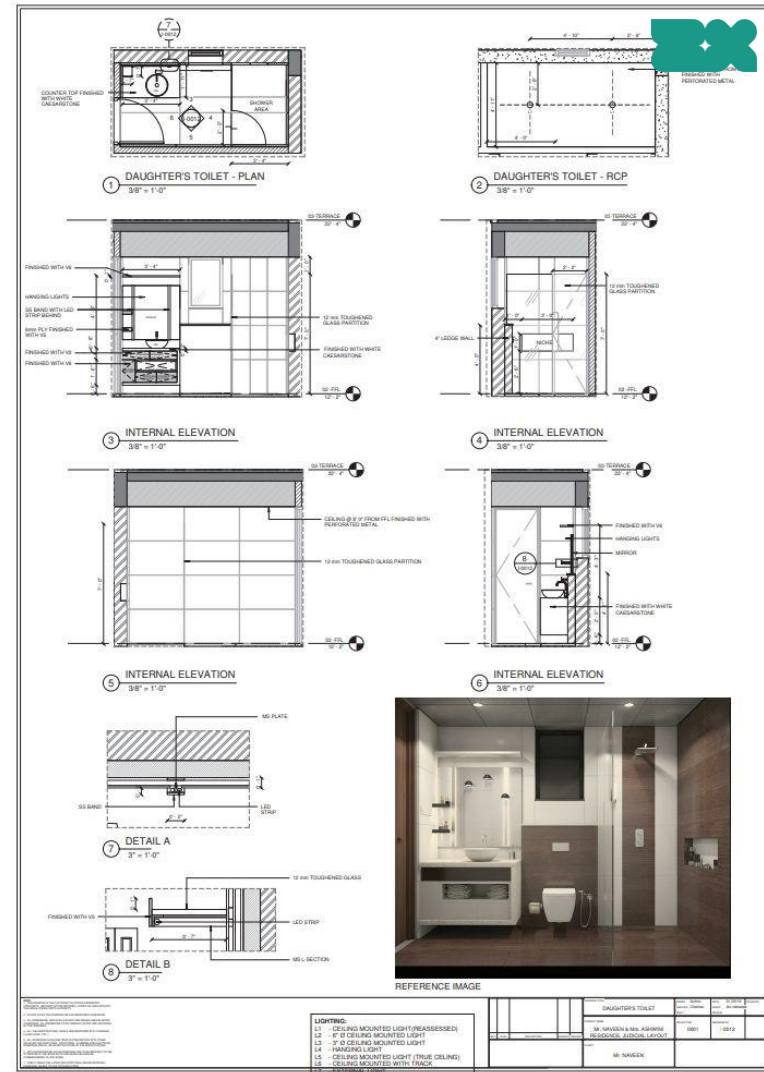


Naveen Kumar Residence, Bangalore

LOD - 400

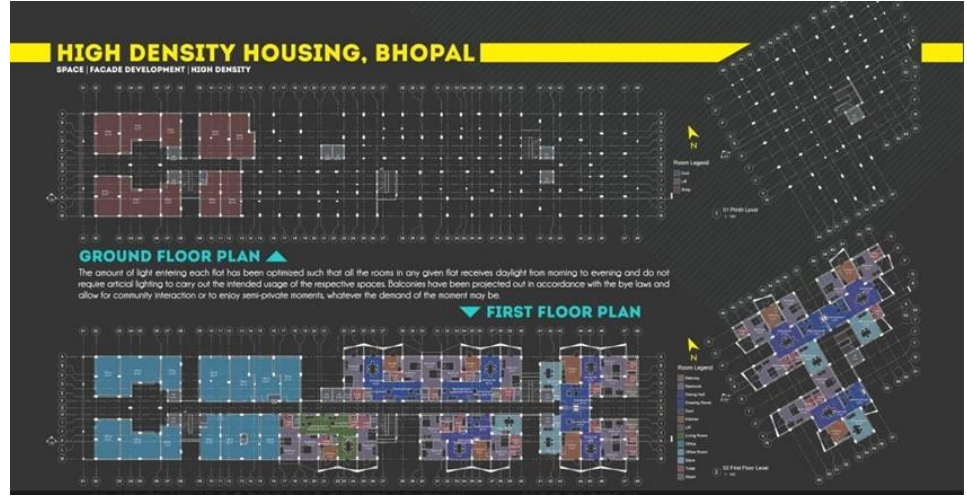
Area - 3600 sqft. approx.

- Architectural Design
- Interior Design
- Detail Development
- Visualization
- BIM Model Optimization
- Parametric Modeling
- Family Development
- MEP Coordination
- Construction Documentation
- Document Management



HIGH DENSITY HOUSING, BHOPAL

- LOD - 200
- Area - 61,000 sqft. approx.
- Concept Design



EVOLUTION OF DESIGN

The shape of the plot was challenging in that that the total width and the mos required by the bye-laws of Bhopal resulted in a significantly small effective width left for spatial design. The linear form also restricted the amount of diffused light that could potentially enter the habitable spaces and the sides/directions from which they could enter the building mass.

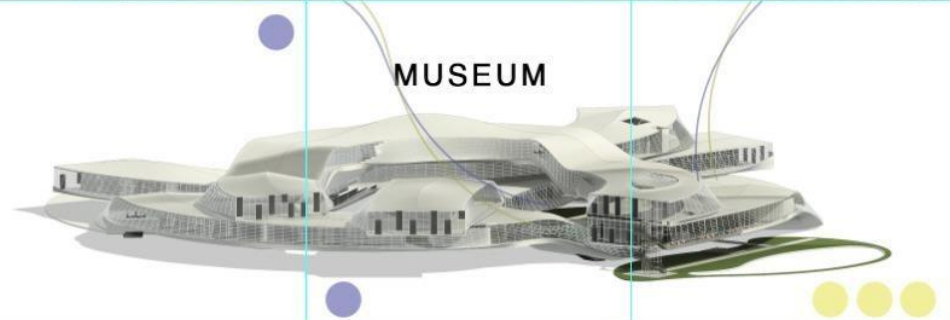
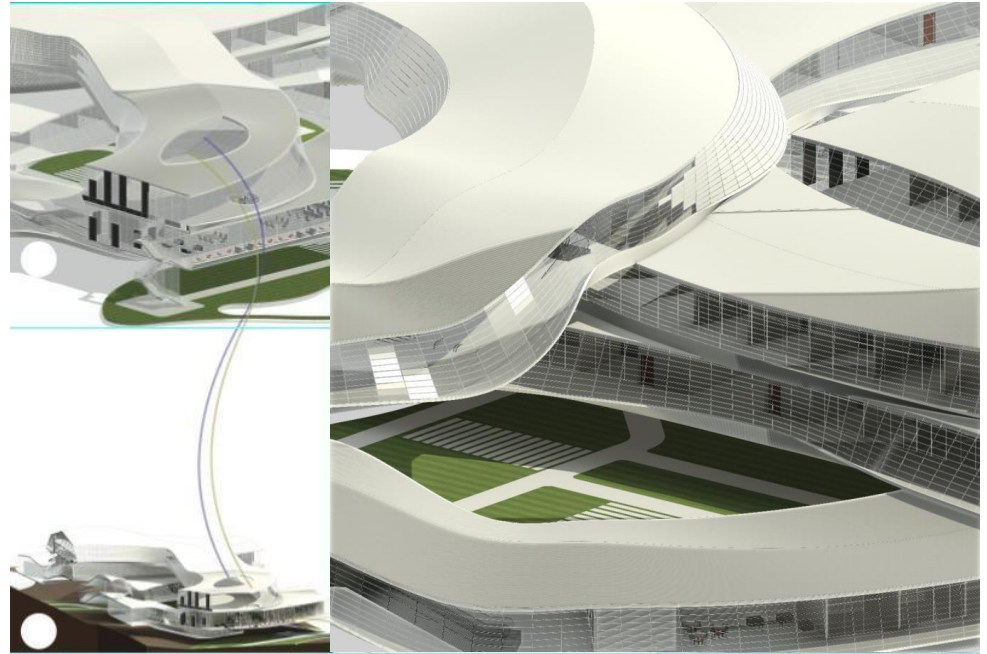
This resulted in a double banked linear distribution of flats. Small, Medium and Large flats of 2BHK, 3BHK, an 4BHK configuration were adopted after a detailed survey of the flat space requirements in the locality.

Museum

LOD - 200

Area - 3,00,000 sqft. approx.

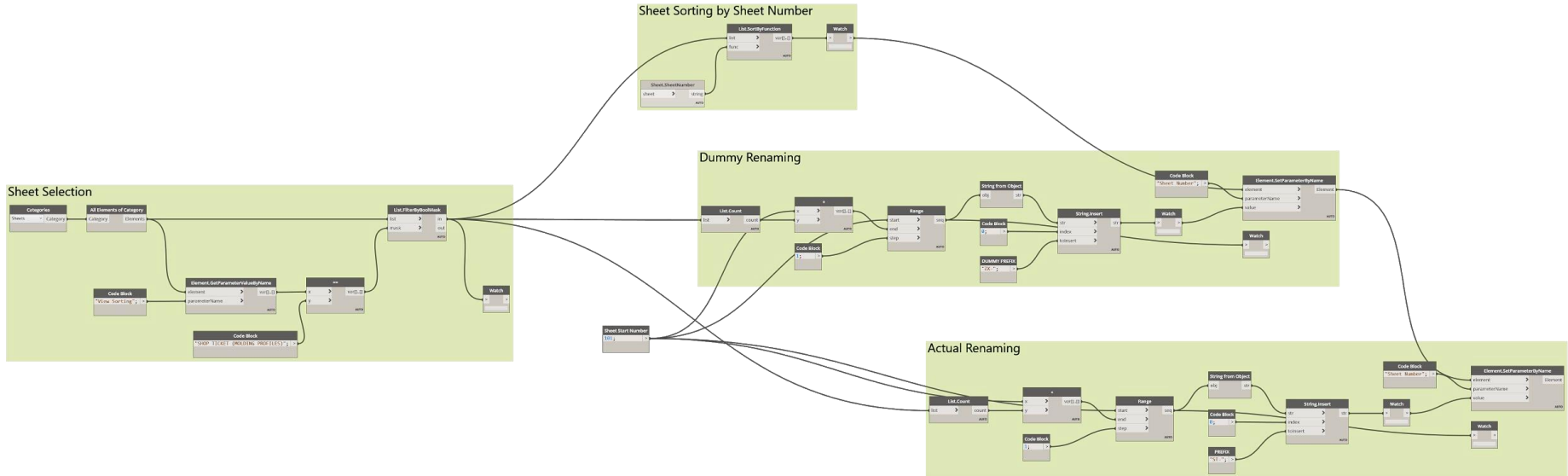
- Conceptual Design
- Massing and Parametric Modeling





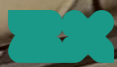
Dynamo and Revit API

Visual Programming using Dynamo and Revit API for Automation of Redundant Tasks that save hours of non-productive efforts.





Matterport Projects



VERIZON, BANGALORE



VERIZON, HYDERABAD



Solenis is committed to ensuring operational excellence
to create sustainable improvement with our associates

ENGAGE

SOLENIS, HYDERABAD



Visualization Projects

RENDER SAMPLES





[Click here for
walkthrough
sample](#)



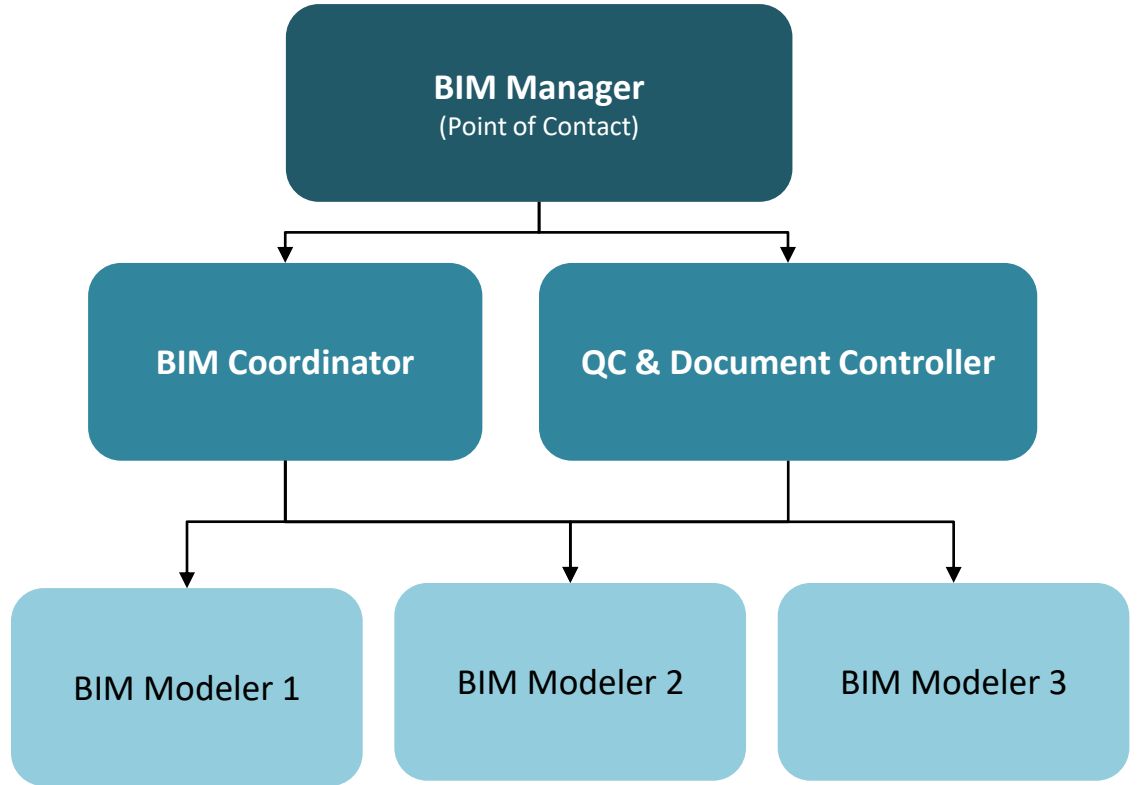


Team



Team

As per your scope of work, we will build you a dedicated team working within your time zone and that meets your technical expertise requirements.



A short horizontal line with a teal segment on the left and a yellow segment on the right, located above the 'Thank you.' text.

Thank you.

For more info, visit www.zxcollabs.com