

~316 FEET

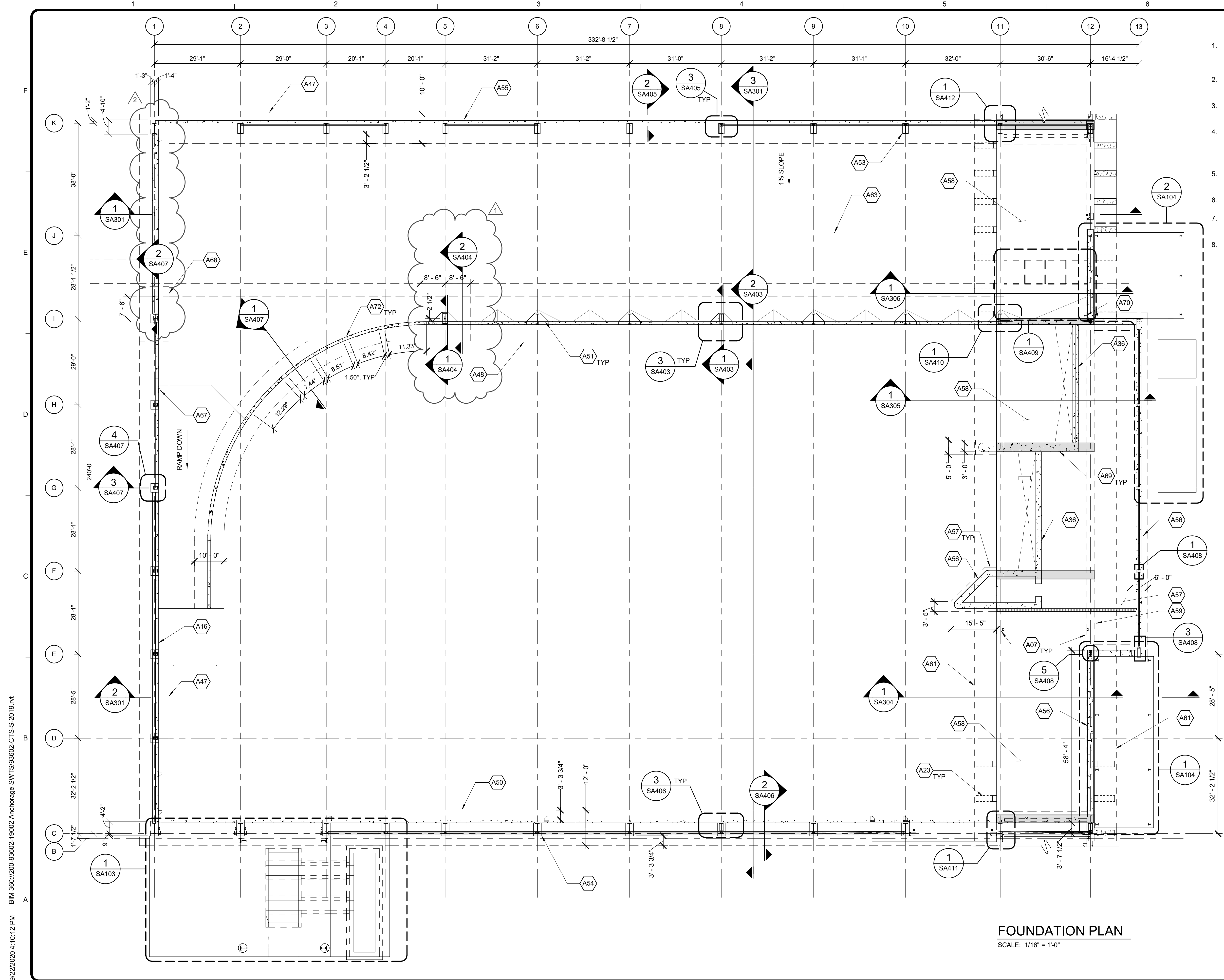
~240 FEET

~20 FEET DEEP  
LOADOUT TUNNEL

CONCRETE  
FOUNDATIONS

STEEL FRAMING  
(PURCHASE ONLY,  
NOT INSTALLATION)

WP2: TIPPING BUILDING CONCRETE  
FOUNDATIONS, TUNNEL, AND  
PURCHASE OF THE STEEL FRAMING



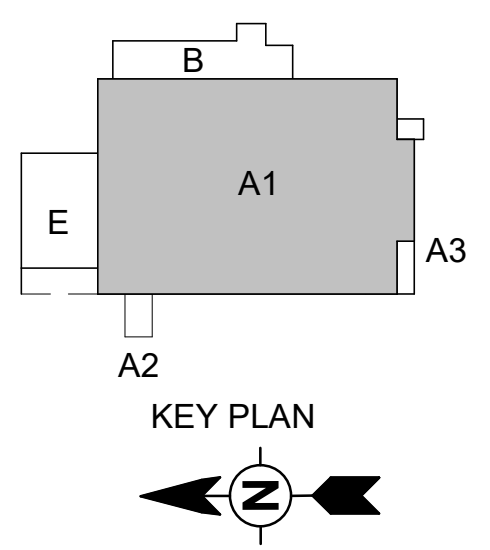
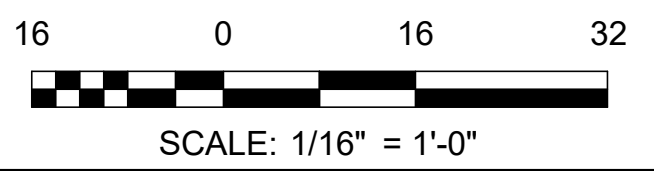
**GENERAL NOTES - BLDG A**

1. THE TRANSFER STATION BUILDING, ADMINISTRATION BUILDING, AND WARM STORAGE BUILDING ARE STRUCTURALLY INDEPENDENT.
2. REFER TO CIVIL FOR EXCAVATION AND BACKFILL, AND PIPE CONNECTIONS/PENETRATIONS AND ROUTING.
3. PLACE TIPPING FLOOR CONTROL JOINTS IN 10' X 10' GRID. SEE DETAIL 3&4/SA502 FOR TYPICAL CONTROL JOINT.
4. FRAME AND COLUMN SPACING TO BE DETERMINED BY BUILDING SUPPLIER. FOUNDATION SIZE AND REINFORCING TO BE FINALIZED UPON RECEIPT OF FINAL APPROVED METAL BUILDING DRAWINGS AND CALCULATIONS.
5. REFER TO ELECTRICAL DRAWINGS EA101, EA102, EA907 FOR CONDUIT ROUTING.
6. REFER TO PA100 FOR UNDERGROUND DUCT INFORMATION.
7. REFER TO MECHANICAL DRAWINGS M301 AND M302 FOR RADIANT HEAT CONDUIT ROUTING.
8. USE CLASS B NORMAL-WEIGHT CONCRETE AS APPLICABLE UNLESS OTHERWISE SHOWN ON SHEET SA108.

**KEYNOTES**

- A07 LOADOUT TUNNEL WALLS BELOW
- A16 CTS BUILDING 12" CONC WALL
- A23 CONCRETE COUNTERFORT
- A36 24" THICK CONCRETE PUSH WALL
- A47 10'-0" WIDE BY 2'-0" THICK CONTINUOUS FOOTING
- A48 15'-0" WIDE BY 2'-0" THICK CONTINUOUS FOOTING
- A50 12'-0" WIDE BY 2'-0" THICK CONTINUOUS FOOTING
- A51 CONC PEDESTAL - SEE DETAIL 3/SA403; SEE DETAIL 7/SA408 FOR ANCHOR REINFORCING REQUIREMENTS
- A53 CONC PEDESTAL - SEE DETAIL 3/SA405; SEE DETAIL 9/SA408 FOR ANCHOR REINFORCING REQUIREMENTS
- A54 CONC PEDESTAL - SEE DETAIL 3/SA406; SEE DETAIL 7/SA408 FOR ANCHOR REINFORCING REQUIREMENTS
- A55 CTS BUILDING 10" CONC WALL
- A56 CTS BUILDING 24" CONC WALL
- A57 36" CONC MAT FOUNDATION
- A58 36" THICK TUNNEL ROOF SLAB - SEE PLAN SECTIONS FOR REINFORCEMENT SIZE AND SPACING
- A59 30" THICK CONC TUNNEL WALL - SEE PLAN SECTIONS FOR REINFORCEMENT SIZE AND SPACING
- A61 EDGE OF TUNNEL SLAB BELOW
- A63 ELECTRICAL DUCT BANK, SEE DETAIL 6/SA503
- A67 UTILITY RECESS WITH ACCESS DOOR, SEE ARCH
- A68 CONTINUOUS FOOTING STEP - SEE DETAIL 2/SA405
- A69 BOND BEAM REGIONS - SEE DETAILS 3,4,6/SA501 FOR BEAM SIZE AND REINFORCEMENT
- A70 8" DIA PENETRATION IN TUNNEL ROOF SLAB FOR SPRINKLER SYSTEM PIPE
- A72 24" WIDE DRAINAGE OPENING IN INTERIOR WALL

**FOUNDATION PLAN**  
SCALE: 1/16" = 1'-0"



AECL1177  
  
**TETRA TECH**  
 3800 Centertown Drive  
 Suite 602  
 Anchorage, AK 99503  
 www.tetra-tech.com

AECL848  
  
**DOWL**  
 4041 B Street  
 Anchorage, Alaska 99503  
 907-562-2000  
 www.dowl.com

WORK PACKAGE 2  
  
 SEPTEMBER 9, 2020

BY

MARK	DATE	DESCRIPTION
1	9/4/20	TUNNEL DRAINAGE REVISION
2	9/22/20	REVISION 2

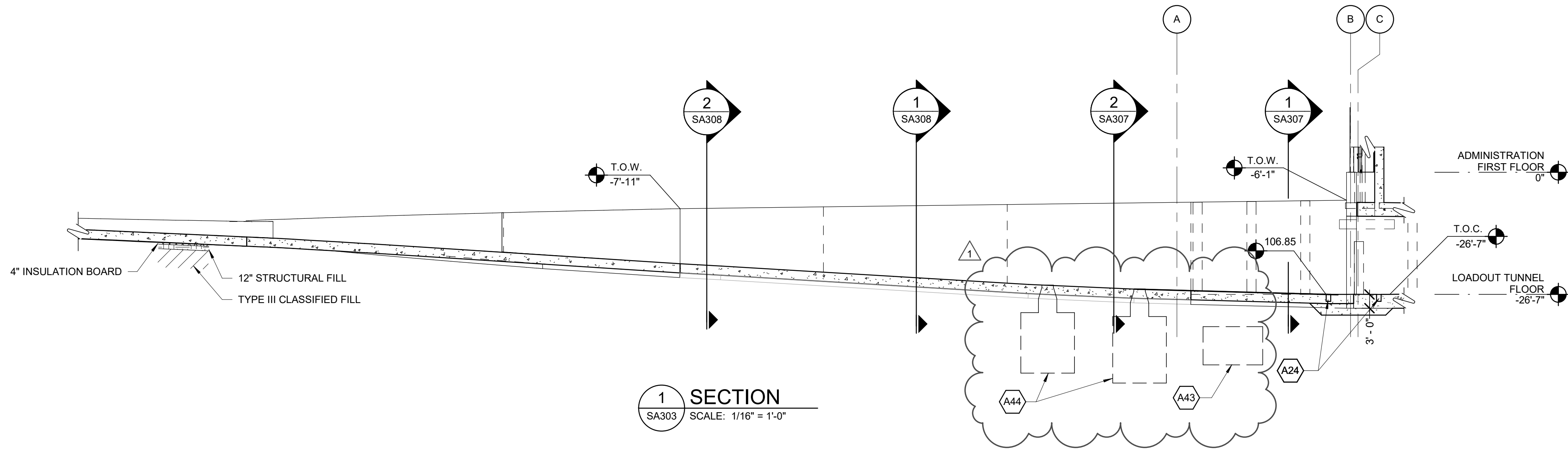
MUNICIPALITY OF ANCHORAGE  
 SOLID WASTE SERVICES  
 CENTRAL TRANSFER STATION  
 FOUNDATION PLAN

PROJ: 200-93602-19002  
 DESN: MSN  
 DRWN: MSN  
 CHKD: HRN

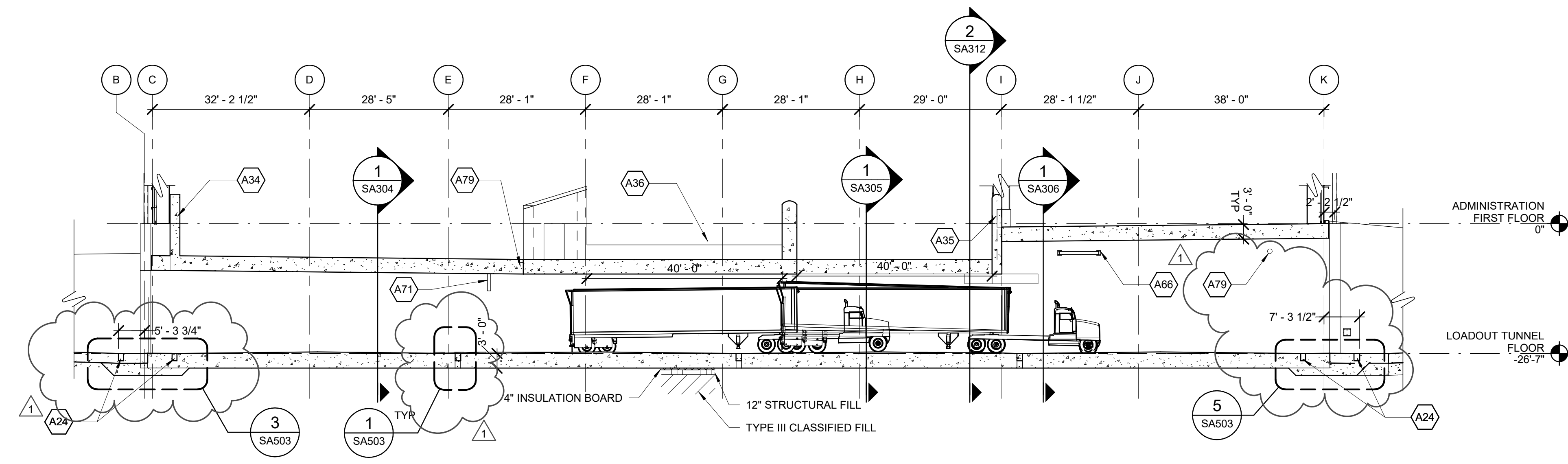
**SA101**

9/22/2020 4:10:12 PM BIM 360://200-93602-19002 Anchorage SVT/TS/93602-CTS-S-2019.rvt

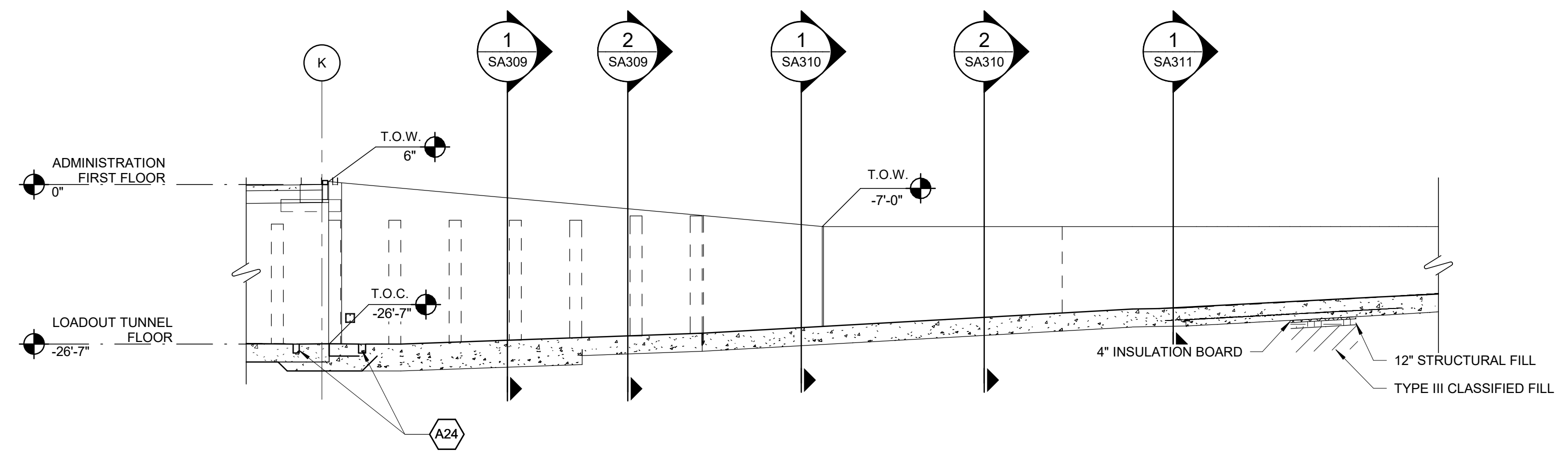
Copyright: Tetra Tech



**1 SECTION**  
SA303 SCALE: 1/16" = 1'-0"



**2 SECTION**  
SA303 SCALE: 1/16" = 1'-0"



**3 SECTION**  
SA303 SCALE: 1/16" = 1'-0"

- KEYNOTES**
- A24 STORM SEWER TRENCH DRAIN, SEE CIVIL FOR PIPE PENETRATIONS, ALIGNMENT, AND CONNECTIONS
  - A34 EXTERIOR WALL
  - A35 INTERIOR WALL
  - A36 24" THICK CONCRETE PUSH WALL
  - A43 SANITARY SEWER SAND-OIL SEPARATOR, FROM PRECAST MANUFACTURER - SEE CIVIL DRAWING
  - A44 SANITARY SEWER MANHOLE, FROM PRECAST MANUFACTURER - SEE CIVIL DRAWING
  - A66 ELECTRICAL CABLE SUPPORT, SEE SA408
  - A71 6" DEEP X 8" WIDE X 36" TALL RECESS FOR SPRINKLER DRAIN, EACH SIDE OF TUNNEL
  - A79 10" DIA STEEL PIPE SLEEVE, SEE PA901 FOR MECHANICAL LINK SEAL DETAIL

AECL1177  
  
**TETRA TECH**  
 3800 Centerville Drive  
 Suite 602  
 Anchorage, AK 99503  
 www.tetra-tech.com

AECL848  
  
**DOWL**  
 WWW.DOWL.COM  
 4041 B Street  
 Anchorage, Alaska 99503  
 907-562-2000

WORK PACKAGE 2  
  
 Erik N. Anderson  
 No. SE 13969  
 SEPTEMBER 9, 2020

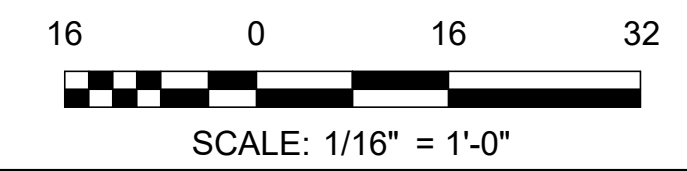
  
 SWS  
 PROFESSIONAL ENGINEER - CIVIL  
 No. SE 13969

MARK	DATE	DESCRIPTION	BY
1	9/4/20	TUNNEL DRAINAGE REVISION	

MUNICIPALITY OF ANCHORAGE  
 SOLID WASTE SERVICES  
 CENTRAL TRANSFER STATION  
**LOADOUT TUNNEL SECTIONS**

PROJ:	200-93602-19002
DESN:	MSN
DRWN:	MKS
CHKD:	HRN

**SA303**

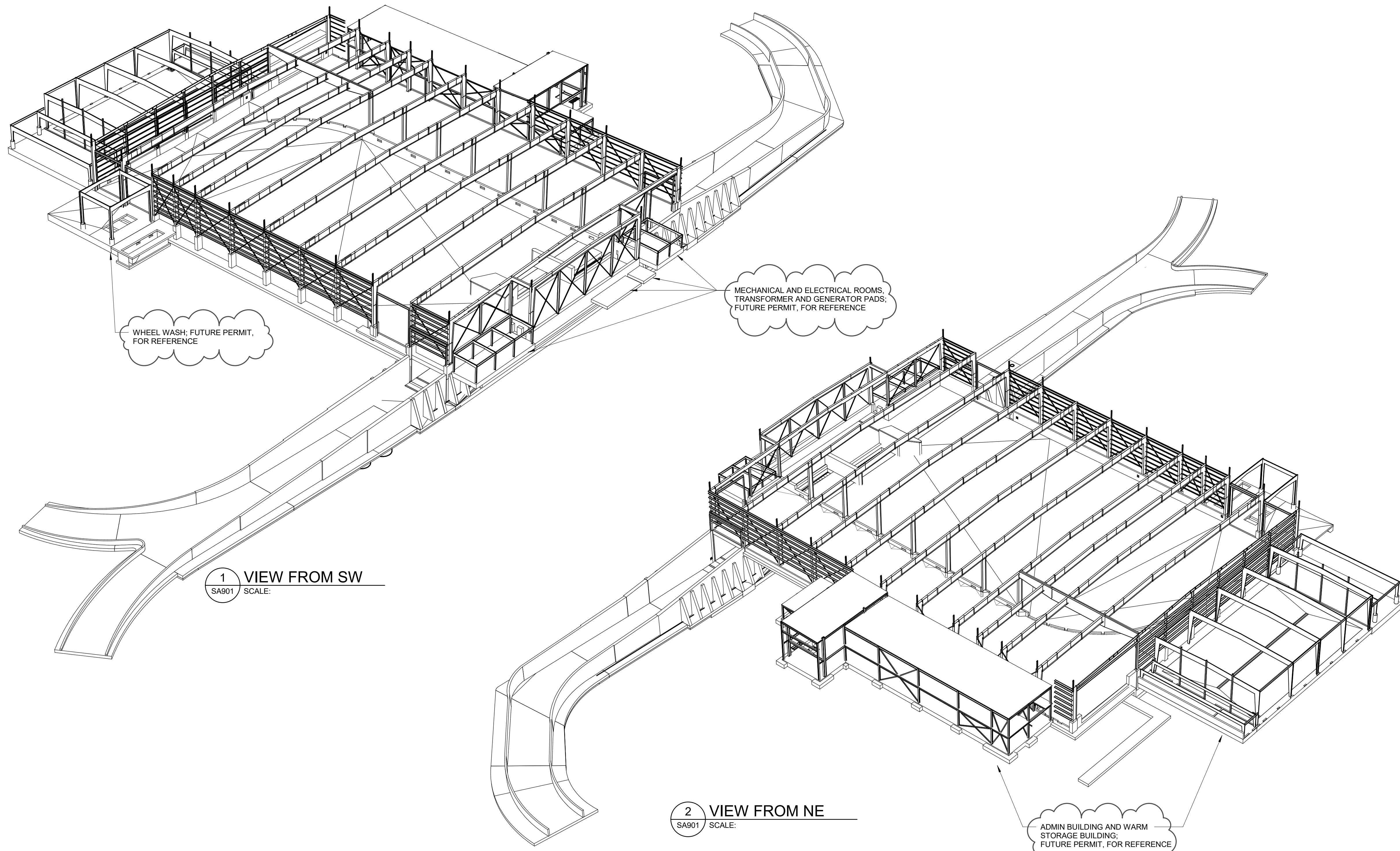


Bar measures 1 inch, otherwise drawing is not to scale



1 2 3 4 5 6 7

F  
E  
D  
C  
B  
A



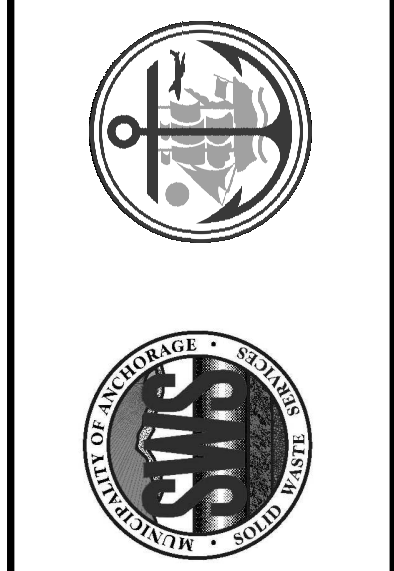
1 VIEW FROM SW  
SA901 SCALE:

2 VIEW FROM NE  
SA901 SCALE:

AECL1177  
  
**TETRA TECH**  
 3800 Centerpoint Drive  
 Suite 602  
 Anchorage, AK 99503  
 www.tetra-tech.com

AECL848  
  
**DOWL**  
 WWW.DOWL.COM  
 4041 B Street  
 Anchorage, Alaska 99503  
 907-562-2000

WORK PACKAGE 2  
  
 R. N. Nicks, P.E.  
 No. SE 13969  
 SEPTEMBER 9, 2020



MARK	DATE	DESCRIPTION	BY
1	9/4/20	TUNNEL DRAINAGE REVISION	

MUNICIPALITY OF ANCHORAGE  
 SOLID WASTE SERVICES  
 CENTRAL TRANSFER STATION  
**PEMB PERSPECTIVE VIEWS**

PROJ:	200-93602-19002
DESN:	MSN
DRWN:	TL, AW
CHKD:	HRN

**SA901**