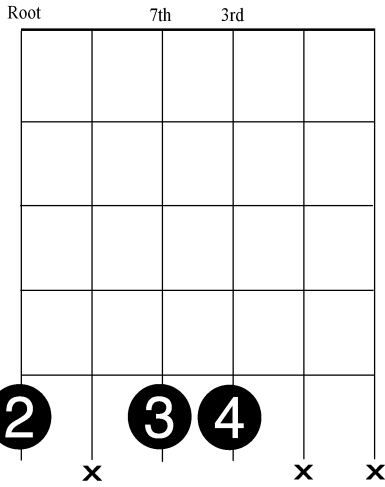
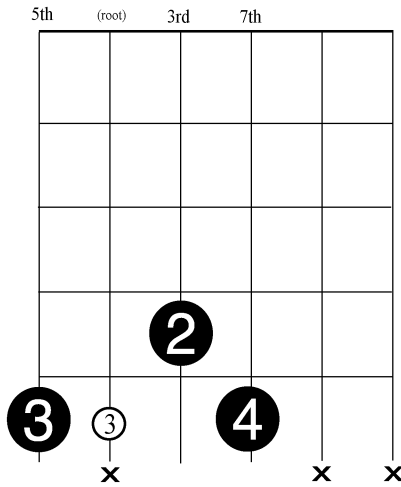


THE MAGIC NINE

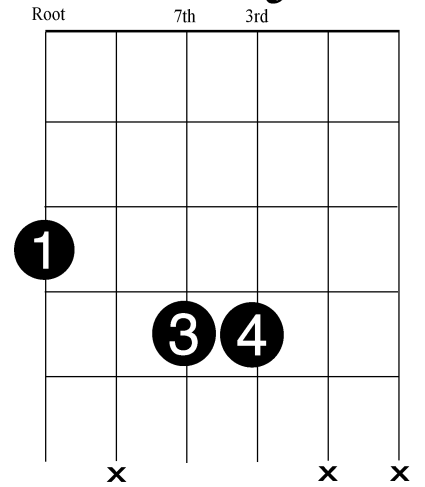
A^{mi}7



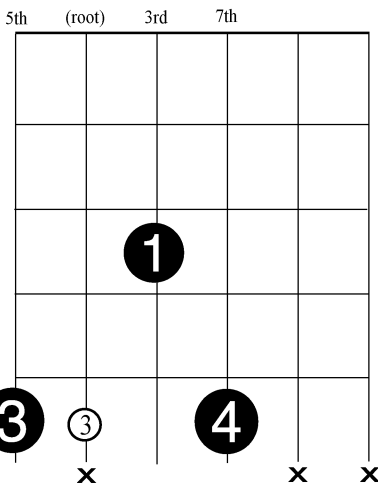
D7



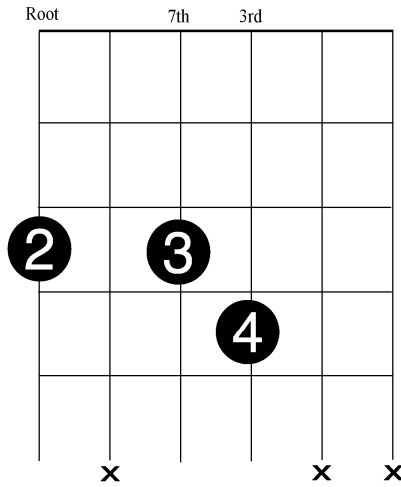
G^{Maj}7



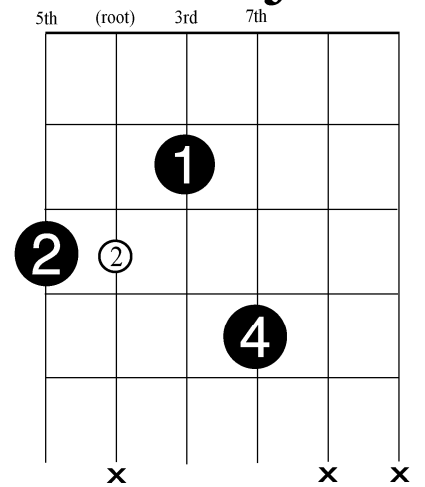
D^{mi}7



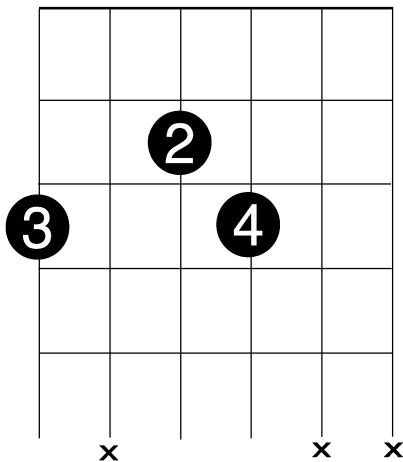
G7



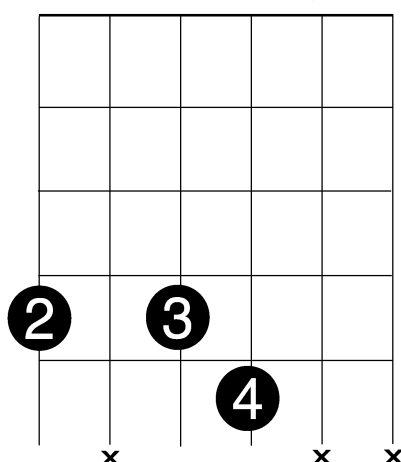
C^{Maj}7



This chord can be:
4 dim. chords, C7, G^{mi}6



This chord can be:
A^b7 or D7(b5)



This chord can be:
C^{Maj}7 or G6 or C^{#mi}7(b5)

