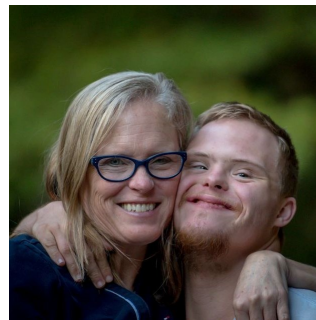
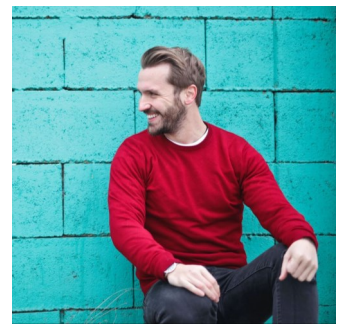




2020 Annual Report



MAKING A STRONGER COMMUNITY

Serving Bracken, Fleming, Lewis, Mason & Robertson Counties and Southern Ohio

Mason County
611 Forest Avenue
Maysville, KY 41056

Bracken County
429 Frankfort Street
Brooksville, KY 41004

Fleming County
610 Elizaville Avenue
Flemingsburg, KY 41041

Lewis County
83 Second Street
Vanceburg, KY 41176

A Premier Behavioral Healthcare Organization

“What lies behind us and what lies before us are tiny matters compared to what lies within us”—Ralph Waldo Emerson

This past year is certainly one we will likely remember for a long time. It has been a year of challenges, adaptations, and efforts to keep clients, staff, and communities safe while continuing to offer quality behavioral and physical healthcare. As an integral partner in the communities we serve, Comprehend, for 53 years, is the region’s longest sustained behavioral health provider serving the Buffalo Trace Region.

Comprehend, Inc.’s 2019-2020 year consisted of many positive contributions to the communities we serve including:

- Began occupancy of the Harriet Hord Cartmell Medical Building
- Opened primary care services through Buffalo Trace Medical Arts
- Acquired and re-located Magee’s as a competitive employment worksite for clients
- Increased utilization of telehealth services to assure continued care for clients
- Maintained an “Essential” workforce to meet the behavioral healthcare needs of our communities
- Obtained Ohio Medicaid in-network provider status, thus opening up services to Ohio

As the Regional Community Mental Health Center and the only comprehensive behavioral health provider in the Buffalo Trace region, Comprehend is committed to continual growth in both services and quality of care. The inclusion this past year of primary care services through BTMA has allowed for a fully integrated array of healthcare services. We are committed to providing high quality services in a welcoming and caring environment. Even with all the changes and challenges of this year, we have continued to keep our doors open. We have ensured access to care, availability to crisis services, collaboration and response to our community, and a deep commitment to the provision of quality healthcare for all those we serve.

Looking to the future, Comprehend is poised to continue leading the initiative for improved, sustainable, and innovative integrated healthcare for our communities. We recognize that needs change and we will continue to be on the forefront leading those changes. As your community behavioral healthcare organization, we have risen to the challenge this year has given and we will continue to endeavor to be your provider of choice.


Michael Berry
Chairman Board of Directors


Pamela Vaught, EdD
President/CEO

Telehealth Services



In response to the COVID-19 epidemic and the necessity to continue providing mental health and physical health services, Comprehend expanded its Telehealth Services program. This expansion allowed for more therapists to provide counseling services to clients in the safety of their home. For clients who did not have internet access, telehealth offices were set up in the offices in order to provide services office to office to minimize contact. In times like these, the mental wellbeing of individuals can be fragile and it is important for clients to be able to contact professionals to help them cope with this unforeseen pandemic. The Comprehend Leadership worked diligently to set up the parameters, equipment and promote these services in order for business to continue as usual with no delay to our clients. The success of this expansion of services, lead us to extend our telehealth services even further by allowing our school based therapist to utilize this service. During this time, Comprehend's Leadership team is meeting weekly and continually strives to stay on top of the latest guidelines and recommendations to keep our clients and staff healthy and safe.

Ohio Medicaid



Comprehend expanded its list of insurance providers by including Ohio Medicaid providers. Comprehend has provided services to Ohioans but was unable to bill Ohio residents Medicaid providers. Ohio Medicaid recently changed their provisions to allow out-of-state providers that are licensed, accredited or certified by their respective states to be considered eligible to provide services to Ohio Medicaid consumers. With this expansion, Comprehend is able to extend more of its service to Southern Ohio and increase its customer base. With this expansion, we are preparing to provide many of the same services we provide in Kentucky to the communities in Ohio. Southern Ohio is underserved when it comes to Mental Healthcare services and there is a great need. By becoming a community partner to the social service organization and schools in that region, we will work together to make a stronger community.

Buffalo Trace Medical Arts



In just a short time, Buffalo Trace Medical Arts (BTMA) has gone thru some staffing changes that have proven to be beneficial for the program. As with any new program, it takes a few years to see the numbers you desire and under the new leadership of Dr. Peter Egan we have seen patient numbers increase. Realizing that word of mouth is the best form of advertising, Comprehend has decided to allow staff to be patients of BTMA. New procedures and protocols are being implemented to insure confidentiality among staff. Additional targeted marketing efforts are planned to increase program awareness and patient numbers.

Harmony House



Comprehend was awarded a \$300,000 grant by the Kentucky Department of Behavioral Health, Developmental and Intellectual Disabilities in partnership with the Kentucky Office of Drug Control Policy to fund the expansion of Treatment and Recovery services for individuals with Opioid Use disorders. Comprehend is utilizing the grant dollars to provide a Women's Sober Living facility, called the Harmony House, in Mason County. The Harmony House is a sober living facility with the sole purpose of helping women transition to living independently without using drugs or alcohol. The residents of the Harmony house are women who are in recovery, are sober, and are committed to working their recovery program. While in our home, women in recovery are surrounded by others who share a common experience and support one another in sobriety. Each woman is connected with the resources that will assist her in remaining sober and meeting his individual goals. Women have access to the various programs offered by Comprehend and other community resources that will help them embrace a new future living a sober lifestyle. Programs like Harmony House make our communities stronger by giving women the tools and support they need to return to their communities and their families clean and sober.

TEAMWORK

*coming together is a beginning; keeping together is progress;
working together is success.*

-Henry Ford

Magee's Bakery



Magee's Bakery is an established business operating in Maysville, Ky. since the 1940's. Comprehend purchased the business from Ron and Judy Dickson in 2019. They had owned the business since 1973. Magee's Bakery is not only an icon in our community, but reaches far beyond this area. As most people know, the transparent tarts are a favorite of Augusta native and actor George Clooney. Magee's is also known for many other favorites such as; pies, cookies, cakes, cake squares, brownies, cinnamon crisps, and breads. Magee's Bakery is recognized as one of the top 100 places to visit in Kentucky and is on the state's "Bucket List". When Comprehend was given the opportunity to purchase Magee's Bakery, we were honored to keep the tradition alive, while giving back to our community and beyond, to have access to their favorite desserts and products. We also so it as an opportunity to expand our Intellectual and Developmental Disability program as an additional resource and service to the clients the program serves. After purchasing the bakery, we moved to the current location at 414 Market Square Maysville, with the hopes of a more accessible location and visible to visitors coming to our community. Magee's Bakery of Comprehend opened the doors October 21, 2019 for our customers. The community and beyond and has supported Magee's Bakery of Comprehend as we continue the tradition of this iconic business. Magee's Bakery was voted "Best Bakery" in the Ledger Independent's contest "Best of the Best" this year. We continue to carry on the tradition because of the support of the community. In turn, we strive for Magee's Bakery to continue to be a business that will make our community stronger, as visitors want to come to this area to visit us and see the great businesses that are available in our community.

Community Support Program



The Community Support Program provides community-based mentoring for children and adolescents receiving behavioral health services at Comprehend. The program pairs trained adult mentors, known as Community Support Associates (CSAs), with youth ages 5-17 to help them become more positively involved in their communities while supporting their therapeutic goals.

The overarching goal of the program is to increase socialization while decreasing the anxiety

many youth face about new experiences. CSAs work with community partners and local businesses to provide youth with opportunities to learn age-appropriate life skills and create connections within their communities. These opportunities, often limited for the youth we serve, also help to facilitate a sense of belonging and community attachment – a strong protective factor for youth against substance use, violence and other problem behaviors.

The program serves youth in all five counties within the Buffalo Trace region. Typically youth participate in the program for six months and work toward goals such as improving social skills, developing healthy habits and coping practices, and increasing compliance with rules and expectations. CSAs utilize various community settings including parks, libraries, churches and restaurants where they can teach important life skills and model positive, pro-social behaviors.

When asked how the program benefits our children and communities, our staff was eager to share their thoughts. Here's what some of them had to say...

“Community Support is a way of breaking down barriers for children in their communities by helping them improve their social skills and develop ways of overcoming fears and anxiety. Children who are a part of the program are better prepared to handle day to day community interactions.” -Shamar Humphrey, CSA

“Community Support improves children's self-esteem by allowing them to go out in the community and do positive things that help them feel good about themselves.” – Stacy Gray, CSA

“Children in our program learn how to engage and interact positively within their community. I've seen kids improve their mental health through the support of this program and their CSA.” -Ginny Bravard, Community Support Program Coordinator

Buffalo Trace Career Solutions



MAKING A DIFFERENCE - ISSAC'S STORY

My name is Isaac Reed and I am 26 years old. After suffering from Autism and Major Depressive Disorder for most of my teens and young adult years, I was discouraged that I would ever be able to get a job, much less be successful in keeping a job. After trying many different mental health treatment modalities with little success, I came into my first appointment with Supported Employment with little expectation. However, after talking to my employment specialist, Judy Tierney, for less than one hour, I actually felt hope for the first time in many, many years! I told her I felt like I had a weird brain and she told me that she loved my weird brain! I had never heard any person say anything particularly positive about my limitations! She assured me that



just because I may not be for EVERY employer, didn't mean I wouldn't be for SOME employers. Judy worked tirelessly to help me in every way possible, from completing a resume, to making sure I had clothing to be job ready. She taught me how to search for jobs, while she worked day and night searching for employment that may be suitable for me. After receiving a tip from Judy that Fast Track It, a local online auction warehouse, was hiring, I applied for the job and was hired! Judy made sure I had everything I needed for work, like steel-toed shoes and work clothes. She made sure I had transportation arrangements and that I was 100% work-ready. I LOVE my job and I love becoming more self-sufficient. Judy and the help of the Supported Employment Program have been, without a doubt, THE best thing that has

happened to me! Today, I can pay my own bills and hold my head high, thanks to all of the hard work that Judy did for me. She NEVER gave up on me, even when I was ready to give up on myself. I will forever be grateful for Judy and this program and how much this experience has

Financial Report



		As of June 30th	
ASSETS		2020	2019
	Cash & Near Equivalents	\$ 6,518,410.00	\$ 9,200,696.00
	Net Accounts Receivable	1,229,217.00	1,098,732.00
	Prepaid Expenses	106,500.00	93,579.00
	Property & Equipment (Less Accum. Depr.)	8,448,763.00	6,847,645.00
	Other Assets	5,208,427.00	5,192,005.00
TOTAL ASSETS		\$ 21,511,317.00	\$ 22,432,657.00
LIABILITIES			
	Accounts Payable	\$ 166,222.00	\$ 1,506,750.00
	Current Portion of Debt	151,815.00	33,327.00
	Accrued Payroll & Fringe	580,809.00	582,964.00
	Deferred/ Unearned Revenue	240,122.00	151,268.00
	Long Term Debt	10,997,575.00	11,115,947.00
TOTAL LIABILITIES		\$ 12,136,543.00	\$ 13,390,256.00
FUND BALANCES		\$ 9,374,774.00	\$ 9,042,401.00
TOTAL LIABILITIES & FUND BALANCES		\$ 21,511,317.00	\$ 22,432,657.00

Mission

Comprehends mission is to enhance the well-being of individuals, families, and communities by advocating for and providing behavioral healthcare services in a welcoming and caring environment.

Vision

Comprehend is committed to the continual pursuit of excellence in behavioral health services by providing the highest quality individualized care through a staff of dedicated and expert professionals, thereby becoming the employer, provider, and partner of choice.



Employee Overview



PROFESSIONAL CREDENTIALS	
Licensed Psychologist, Ph.D.	1
Licensed Psychological Associates, M.S.	3
Licensed Clinical Social Worker, MSW	4
Licensed Professional Counselors, M.ED	13
Licensed Professional Counseling Associate, M. Ed	7
Licensed Marriage & Family Therapist	1
Licensed Psychiatrist	1
Nurse Practitioner	4
Certified Alcohol and Drug Counselor	1
Certified Prevention Professionals	4
Licensed MD	1

STAFFING BREAKDOWN	
Executive Staff	10
Coordinators & Supervisors	15
Professional Staff	58
Administrative Support	20
Maintenance	5
Service Workers	63
Total Staff	171

2019-2020 Board of Directors



Dr. Michael Berry (*Chair*)
Mr. Earl Bush (*Vice Chair*)
Mr. Tracey Florer (*Treasurer*)
Ms. Lovell Knox (*Secretary*)
Mr. Dane Blankenship
Mr. John Byard
Ms. Rebecca Cartmell

Mr. James "Buddy" Gallenstein
Mr. Bill Henry
Ms. Kim Hester
Mr. Roger King
Mrs. Tracy Parker
Mr. David Reed
Ms. Vicki Haley-Rosser

Thank you for your service!