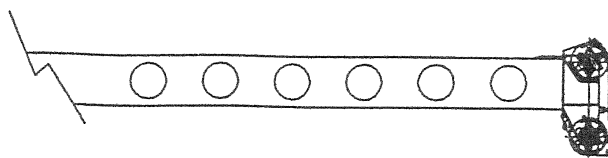


USE THIS CHART ONLY WHEN ALL OUTRIGGERS ARE FULLY EXTENDED

RATED LOAD ON OUTRIGGERS

LOAD RADIUS (FT)	LOADED BOOM ANGLE (DEG)	OVER REAR (LB)	360° (LB)	LOAD RADIUS (FT)	LOADED BOOM ANGLE (DEG)	OVER REAR (LB)	360° (LB)	LOAD RADIUS (FT)	LOADED BOOM ANGLE (DEG)	OVER REAR (LB)	360° (LB)
BOOM LENGTH 30 FT				BOOM LENGTH 39 FT				BOOM LENGTH 50 FT			
9.0	65.1	80000*	80000*								
10.0	63.0	70000*	70000*	10.0	69.4	46500*	46500*				
12.0	58.5	60900*	60900*	12.0	66.2	46500*	46500*	12.0	71.7	46500*	46500*
15.0	51.4	49300*	49300*	15.0	61.2	46500*	46500*	15.0	68.0	44200*	44200*
20.0	37.4	35200*	35200*	20.0	52.3	36000*	36000*	20.0	61.6	36500*	36500*
25.0	13.7	26600*	26600*	25.0	42.0	27500*	27500*	25.0	54.8	28000*	28000*
25.6	.0	25600*	25600*	30.0	28.8	21800*	19800	30.0	47.3	22300*	20300
				34.3	.0	17600	15000	35.0	38.7	17800	15200
BOOM LENGTH 61 FT				BOOM LENGTH 72 FT				40.0	27.9	14200	11700
								45.0	7.9	11400	9200
								45.3	.0	11200	9000
15.0	72.1	38000*	38000*					BOOM LENGTH 83 FT			
20.0	67.1	32900*	32900*	20.0	70.8	27300*	27300*				
25.0	61.9	27800*	27800*	25.0	66.5	23000*	23000*	25.0	69.8	21700*	21700*
30.0	56.3	22700*	20600	30.0	62.0	19800*	19800*	30.0	66.0	18200*	18200*
35.0	50.4	18100	15500	35.0	57.4	17300*	15700	35.0	62.2	15800*	15800*
40.0	43.9	14500	12100	40.0	52.5	14600	12200	40.0	58.1	13700*	12400
45.0	36.5	11800	9600	45.0	47.2	12000	9800	45.0	53.9	12000*	9900
50.0	27.3	9800	7700	50.0	41.4	10000	7900	50.0	49.5	10100	8100
55.0	13.0	8100	6300	55.0	34.8	8400	6500	55.0	44.7	8500	6600
56.3	.0	7700	5900	60.0	26.9	7100	5300	60.0	39.5	7200	5500
BOOM LENGTH 94 FT				65.0	15.5	6000	4400	65.0	33.6	6200	4500
				67.3	.0	5500	3900	70.0	26.6	5300	3700
25.0	72.2	17400*	17400*					75.0	17.0	4500	3100
30.0	69.0	14900*	14900*					78.3	.0	3900	2600
35.0	65.7	13000*	13000*								
40.0	62.2	11400*	11400*								
45.0	58.7	10000*	10000								
50.0	55.1	8900*	8200								
55.0	51.2	8100*	6700								
60.0	47.2	7200*	5600								
65.0	42.8	6200	4600								
70.0	38.0	5400	3900								
75.0	32.7	4600	3200								
80.0	26.4	3900	2600								
85.0	18.1	3300	2100								
89.3	.0	2800	1700								

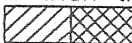


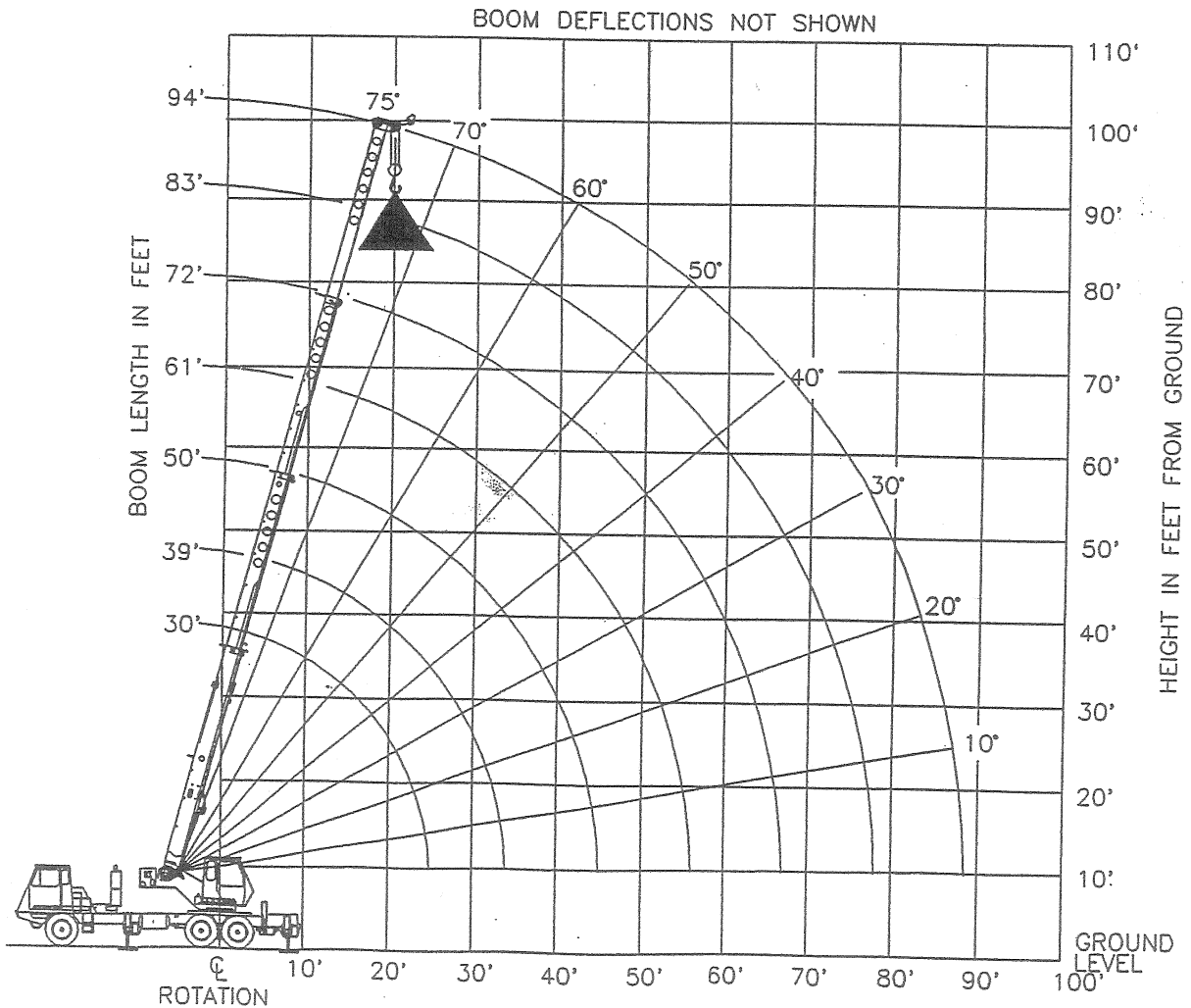
Add 100Lbs to the chart values if the AUX BOOM HEAD SHEAVE is NOT ERECTED.

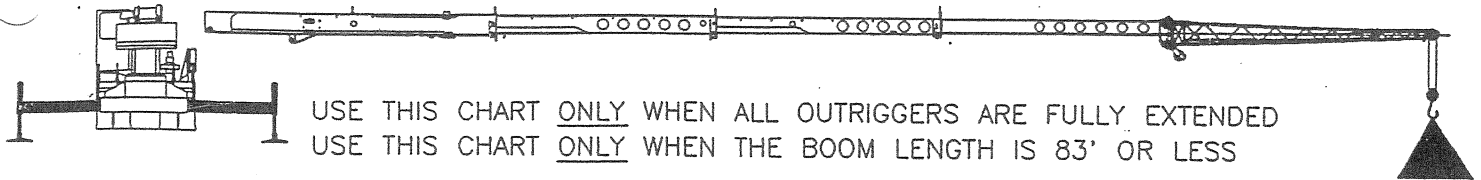
SET-UP:

1. Crane load ratings are based on the crane being leveled and standing on a firm, uniform supporting surface.
2. Crane load ratings on outriggers are based on all outrigger beams being fully extended and the tires raised free of the supporting surface.

OPERATION:

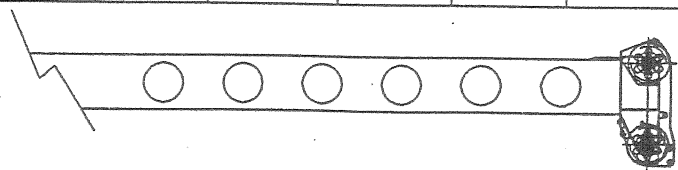
1. CRANE LOAD RATINGS MUST NOT BE EXCEEDED. DO NOT ATTEMPT TO TIP THE CRANE TO DETERMINE ALLOWABLE LOADS.
2. When either radius or boom length, or both, are between listed values, the smaller of the two listed load ratings shall be used.
3. Do not operate at longer radii than those listed on the applicable load rating chart (cross hatched  areas shown on range diagrams) as tipping can occur without a load on the hook.
4. The boom angles shown on the Capacity Chart give an approximation of the operating radius for a specified boom length. The boom angle, before loading, should be greater to account for boom deflection. It may be necessary to retract the boom if maximum boom angle is insufficient to maintain rated radius.
5. Power telescoping boom sections must be extended equally.





USE THIS CHART ONLY WHEN ALL OUTRIGGERS ARE FULLY EXTENDED
 USE THIS CHART ONLY WHEN THE BOOM LENGTH IS 83' OR LESS

83 FT BOOM LENGTH WITH A 32 FT OFFSET JIB									
LOADED BOOM ANGLE (DEG)	0° OFFSET			15° OFFSET			30° OFFSET		
	(REF) LOAD RADIUS (FT)	REAR ONLY (LB)	360° (LB)	(REF) LOAD RADIUS (FT)	REAR ONLY (LB)	360° (LB)	(REF) LOAD RADIUS (FT)	REAR ONLY (LB)	360° (LB)
75	34'	10500*	10500*	41'	7600*	7600*	49'	5800*	5800*
73	37'	10200*	9800	45'	7200*	7200*	51'	5700*	5700*
71	40'	9900*	9100	48'	7000*	7000*	54'	5600*	5600*
68	46'	9200*	8100	53'	6600*	6600*	58'	5400*	5400*
65	51'	8500*	7300	57'	6300*	6300*	62'	5200*	5200*
62	55'	7600*	6500	62'	5800*	5800*	66'	4900*	4900*
59	60'	6800	5700	66'	5400*	5200	70'	4600*	4600*
55	66'	6000	4700	71'	4800*	4400	76'	4300*	3800
51	72'	5200	3800	77'	4300*	3600	80'	3900*	3200
47	77'	4500	3200	82'	3800*	3100	85'	3600*	2800
43	82'	3900	2600	87'	3400*	2600	89'	3200*	2400
38	88'	3300	2000	92'	3000*	2100	94'	2900*	1900
32	95'	2700	1400	98'	2500	1500	99'	2500	1500
25	100'	2300	1000	103'	2100	1100			
17	106'	2000	700	107'	1800	900			
0	111'	1600							




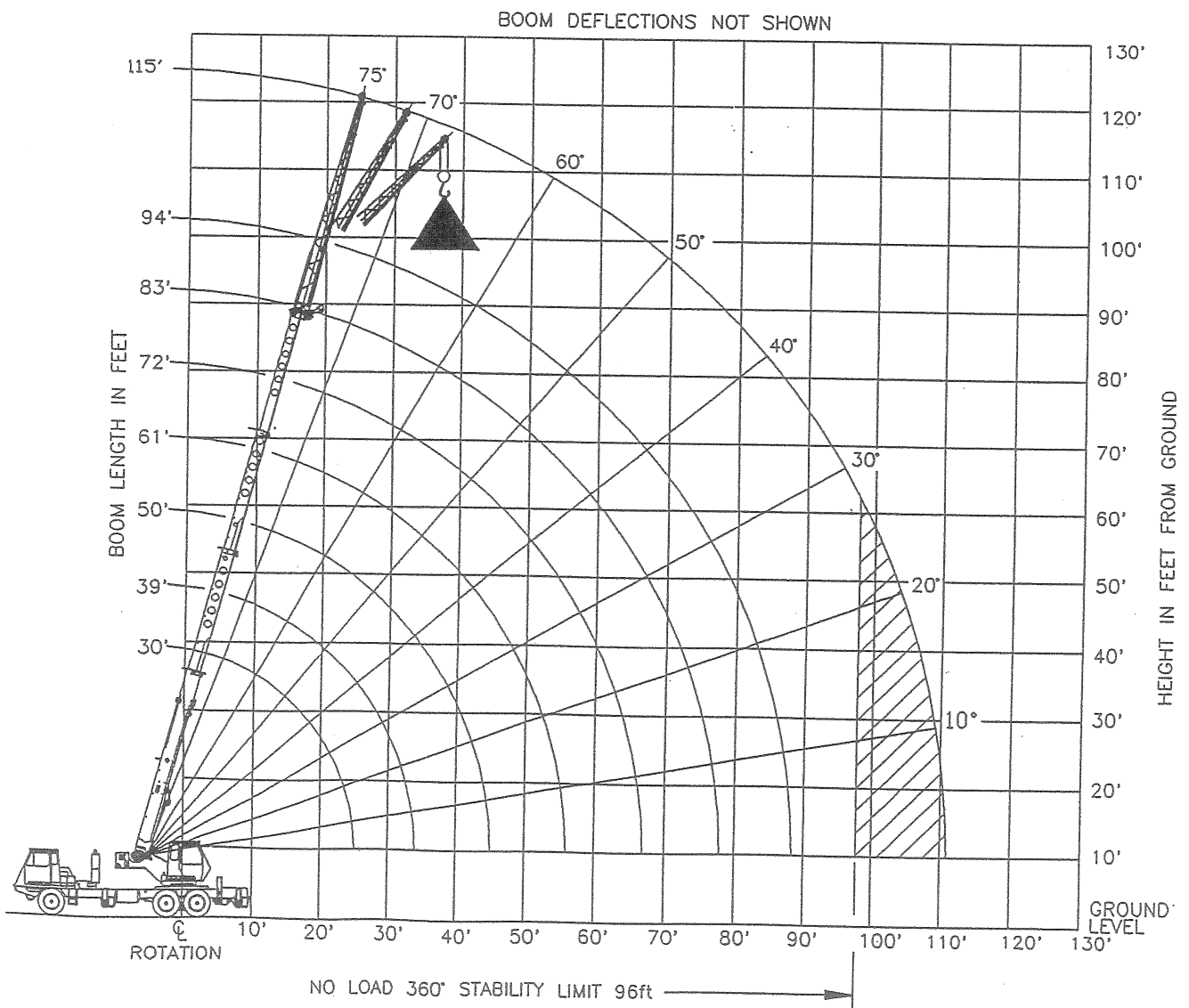
Add 100Lbs to the chart values if the AUX BOOM HEAD SHEAVE is NOT ERECTED.

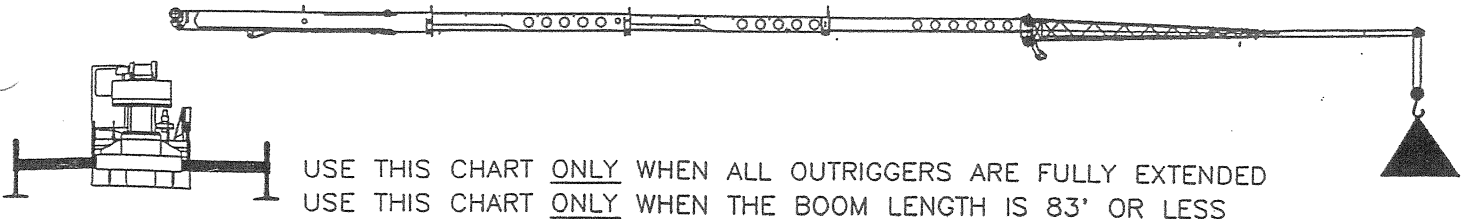
SET-UP:

1. Crane load ratings are based on the crane being leveled and standing on a firm, uniform supporting surface.
2. Crane load ratings on outriggers are based on all outrigger beams being fully extended and the tires raised free of the supporting surface.

OPERATION:

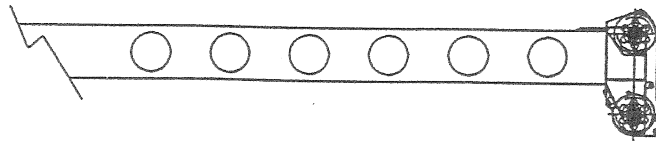
1. CRANE LOAD RATINGS MUST NOT BE EXCEEDED. DO NOT ATTEMPT TO TIP THE CRANE TO DETERMINE ALLOWABLE LOADS.
2. When either radius or boom angle, or both, are between listed values, the smaller of the two listed load ratings shall be used.
3. Do not operate at longer radii than those listed on the applicable load rating chart (cross hatched  areas shown on range diagrams) as tipping can occur without a load on the hook.
4. The boom angles shown on the Capacity Chart give an approximation of the operating radius for a fully extended boom. The boom angle, before loading, should be greater to account for boom deflection. It may be necessary to retract the boom if maximum boom angle is insufficient to maintain rated radius.
5. Power telescoping boom sections must be extended equally.
6. For all boom lengths less than the maximum with the jib erected, the rated loads are determined by boom angle only in the appropriate column.
7. For boom angles not shown, use the capacity of the next lower angle.
8. Listed radii are for fully extended boom only.





USE THIS CHART ONLY WHEN ALL OUTRIGGERS ARE FULLY EXTENDED
 USE THIS CHART ONLY WHEN THE BOOM LENGTH IS 83' OR LESS

83 FT BOOM LENGTH WITH A 49 FT OFFSET JIB									
LOADED BOOM ANGLE (DEG)	0° OFFSET			15° OFFSET			30° OFFSET		
	(REF) LOAD RADIUS (FT)	REAR ONLY (LB)	360° (LB)	(REF) LOAD RADIUS (FT)	REAR ONLY (LB)	360° (LB)	(REF) LOAD RADIUS (FT)	REAR ONLY (LB)	360° (LB)
75	39'	5000*	5000*	52'	3300*	3300*	59'	2600*	2600*
73	44'	4700*	4700*	56'	3200*	3200*	64'	2600*	2600*
71	49'	4400*	4400*	60'	3100*	3100*	68'	2500*	2500*
68	55'	4000*	4000*	66'	2900*	2900*	73'	2400*	2400*
65	61'	3700*	3700*	71'	2800*	2800*	78'	2400*	2400*
62	66'	3500*	3500*	76'	2700*	2700*	83'	2300*	2300*
59	71'	3300*	3300*	81'	2600*	2600*	87'	2300*	2300*
55	78'	3000*	3000*	87'	2500*	2500*	93'	2200*	2200*
51	84'	2800*	2800*	93'	2400*	2400*	98'	2200*	2200*
47	90'	2700*	2400	98'	2300*	2200	102'	2100*	2000
43	96'	2600*	2000	103'	2200*	1800	107'	2100*	1700
38	104'	2400*	1500	109'	2200*	1400	112'	2100*	1400
32	110'	2300*	1100	115'	2000	1000	115'	2000	1000
25	117'	1900	700	121'	1700	700			
17	123'	1600	500	124'	1400	500			
0	127'	1300							

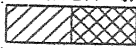


Add 100lbs to the chart values if the AUX BOOM HEAD SHEAVE is NOT ERECTED.

SET-UP:

1. Crane load ratings are based on the crane being leveled and standing on a firm, uniform supporting surface.
2. Crane load ratings on outriggers are based on all outrigger beams being fully extended and the tires raised free of the supporting surface.

OPERATION:

1. CRANE LOAD RATINGS MUST NOT BE EXCEEDED. DO NOT ATTEMPT TO TIP THE CRANE TO DETERMINE ALLOWABLE LOADS.
2. When either radius or boom angle, or both, are between listed values, the smaller of the two listed load ratings shall be used.
3. Do not operate at longer radii than those listed on the applicable load rating chart (cross hatched  areas shown on range diagrams) as tipping can occur without a load on the hook.
4. The boom angles shown on the Capacity Chart give an approximation of the operating radius for a fully extended boom. The boom angle, before loading, should be greater to account for boom deflection. It may be necessary to retract the boom if maximum boom angle is insufficient to maintain rated radius.
5. Power telescoping boom sections must be extended equally.
6. For all boom lengths less than the maximum with the jib erected, the rated loads are determined by boom angle only in the appropriate column.
7. For boom angles not shown, use the capacity of the next lower angle.
8. Listed radii are for fully extended boom only.

