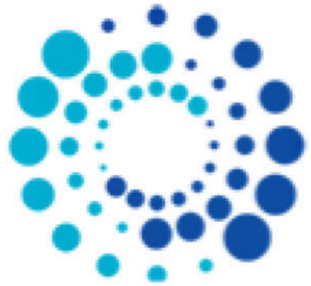


COMPANY PROFILE



Litwin ksa
Saudi Arabia

Process Automation
Safety & Control Solutions

Litwin Saudi Arabia Company Ltd .
Baghlaf Trade Center | 4th Floor | Office No: 406
P.O. Box 3739 | Al Khobar – KSA.
Tel: +966 (13) 893 8557- Ext – 201
Tel: +966 (13) 893 6889
E Mail : info@litwinksa.com www.litwinksa.com



Industrial Automation



Process & Control Solutions

Our Company

LITWIN KSA is a Saudi limited liability company established in March 2007. We are an ISO Certified company serving major Corporate Clients in KSA which includes Saudi ARAMCO, Saudi Electricity Company (SEC), MA'ADEN, SABIC, YASREF etc.

Our services portfolio consists of:

-  Automation
-  Industrial Supply Division
-  International Trading & Distribution
-  QA/QC Inspection Services
-  Pre-commissioning & Commissioning Services

Let's win together



LITWIN KSA Automation Division

Industrial
Automation

Safety

Process &
Control
Solutions

In Association with INPROTEC

INPROTEC Group

INPROTEC Milan

INPROTEC Algérie

INPROTEC Libya

Ciemme Progetti



INPROTEC, with headquarters in Milan, Italy, started its mission in 1992 getting advantage from a professional team over twenty five years of experience and competence in Automation and Controls in the Industrial Process environment.

INPROTEC core activities have always been associated with Control Solutions in the field of Critical Processes, by engineering and applying Control Systems designed and certified to provide reliability, Safety and Availability, with high focus on Oil & Gas, Chemical and Petrochemical.

The Company developed and grew in the recent years to become a Main Automation Supplier, with different Business Unit, where each Unit contributes by specific skills in terms of knowledge, products and solutions, providing complementary activities, allowing an availability of much more global solutions to be offered.

Company Standards

Our Standards

We develop and provide Control & Safety Systems Solutions according to the last International standards and regulations, Including mostly:

- IEC 61508
- IEC 61511
- IEC 6131-2-3
- NFPA72 & 496
- NFPA85
- EN-54
- IEC-60439; IEC-610006-1-2-3
- 2006/95/CE
- 2004/108/CE
- UL, FM
- CENELEC, ATEX



Company ISO Certificate



Certificate of Registration

Certificate No: 161020016621

This is to Certify that the Quality Management System of
LITWIN Saudi Arabia Co. Ltd.
 Office No: 406, 4th Floor, Baghlaif Trade Center, 16th Cross, Khobar - Dammam Highway,
 P.O. Box 3739, Al Khobar - Kingdom of Saudi Arabia
has been assessed and found to be in accordance with the requirements of
ISO 9001:2015
This Certificate is valid for the following scope
Providing Engineering, Procurement, Construction &
Trading of Industrial Material
(IAF Group -28 & 29)

Initial Registration Date	20 th Oct. 2016	Issue Date	21 st Oct. 2019
1 st Surveillance on or before	Completed	Valid Until	19 th Oct. 2022
2 nd Surveillance on or before	Completed	Issue No. Revision	02 00

Certification Cycle of this certificate is three (3) years from the issue date and validity of the certificate shall be subject to the successful completion of the surveillance audit as mentioned above, current status of the certificate can be verified on the official portal of Certification body
 i.e. www.tnwworld.com
"UAF is member of IAF"

Pragyesh Singh
 TNV Certification Pvt Ltd
 CIN: U74900UP2011PTC046719
Accredited by United Accreditation Foundation (UAF)

Accreditation Board Add: United Accreditation Foundation Inc, 400 North Center Dr Ste 202, Norfolk, Va 23502, United States of America

Certification Body Add. H.O.: TNV House, 537-B/187-B Amber Vihar, Lucknow-20, India. Mail: info@leolinda.org

*Validity of the certificate is subject to continued compliance of the management system standard and successful completion of audit as planned by TNV from time to time. Further clarification regarding the scope of this certificate and the applicability of standard may be obtained by consulting the organisation. This certificate remains property of the TNV and must be returned on request. For surveillance details, please visit www.aecordia.org. Registered Office: TNV House, 537-B/187-B Amber Vihar, Lucknow-20, UP, India.

CERTIFICATO

Nr. 50 100 3947 - Rev.006

Si attesta che / This is to certify that

IL SISTEMA QUALITÀ DI
 THE QUALITY SYSTEM OF

INPROTEC
INDUSTRIAL PROCESS TECHNOLOGIES S.r.l.

SEDE LEGALE E OPERATIVA:
 REGISTERED OFFICE AND OPERATIONAL SITE:
VIA BIZET 44/B
IT - 20092 CINISELLO BALSAMO (MI)

SEDE OPERATIVA:
 OPERATIONAL SITE:
VIA BEETHOVEN 24
IT - 20092 CINISELLO BALSAMO (MI)

E CONFORME AI REQUISITI DELLA NORMA
 HAS BEEN FOUND TO COMPLY WITH THE REQUIREMENTS OF

UNI EN ISO 9001:2015

QUESTO CERTIFICATO È VALIDO PER IL SEGUENTE CAMPO DI APPLICAZIONE
 THIS CERTIFICATE IS VALID FOR THE FOLLOWING SCOPE

Progettazione, assemblaggio ed assistenza di sistemi integrati per l'automazione industriale. Commercializzazione ed assistenza di sistemi di controllo e di automazione programmabili (IAF 19, 29)

Design, assembly and assistance of integrated process control systems for industrial automation.
Trade and assistance of programmable control and automation systems (IAF 19, 29)

Per l'Organismo di Certificazione For the Certification Body TUV Italia S.r.l.	Validità / Validity Dal / From: 2018-12-14 Al / To: 2021-11-20
SGQ N° 049A	
Membro degli Accordi di Mutuo Riconoscimento IAF, IAF e IAC Registry of SA, IAF and IAC Mutual Recognition Agreements	
Per la Direzione di Gestione Business Assurance Andrea Coscia Direttore di Gestione Business Assurance	Data emissione / Issuing Date 2018-12-14

PRIMA CERTIFICAZIONE / FIRST CERTIFICATION: 2003-12-03
 DATA DI SCADENZA DELL'ULTIMO CICLO DI CERTIFICAZIONE 2018-11-20
 EXPIRATION DATE OF THE LAST CERTIFICATION CYCLE 2018-11-20

"LA VALIDITÀ DEL PRESENTE CERTIFICATO È SOTTOPOSTA A SOVRVEGLIANZA PERIODICA A 12 MESI E AL RIESAME COMPLETO DEL SISTEMA DI GESTIONE AZIENDALE CON PERIODICITÀ TRIENNALE"
"THE VALIDITY OF THE PRESENT CERTIFICATE DEPENDS ON THE ANNUAL SURVEILLANCE EVERY 12 MONTHS AND ON THE COMPLETE REVIEW OF COMPANY'S MANAGEMENT SYSTEM AFTER THREE-YEARS"

TUV Italia S.r.l. • Gruppo TÜV SÜD • Via Carducci 125, Pal. 23 • 20089 Sesto San Giovanni (MI) • Italia • www.tuv.it TÜV®

Our Supported Markets

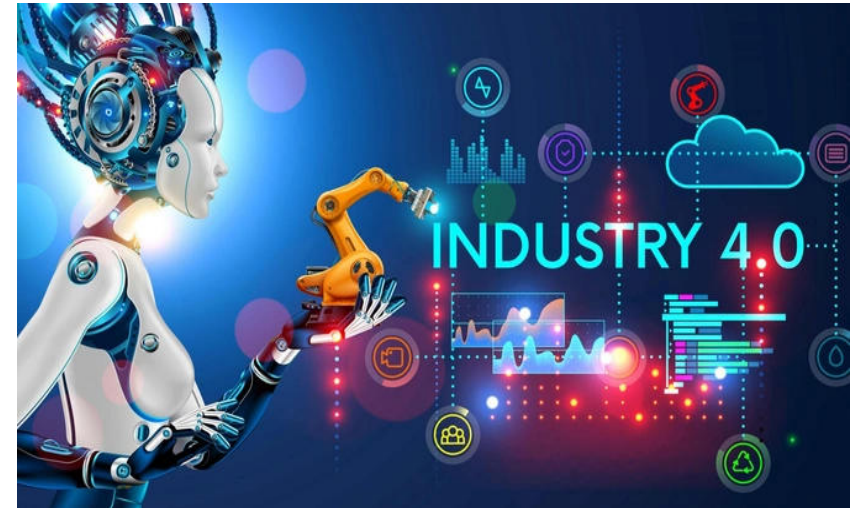
Our Supported markets

INPROTEC, Field Activities and Experience mainly resumed in :

- Oil & Gas
- Chemical
- Petrochemical-Power Generation
- Oil Terminals & Storage Facilities

Others:

- Water Treatment
- HVAC
- Pharma



Our Main References

EPC & OEM

Technip

Linde

**Maire
Tecnimont**

**SAMSUNG
SAMSUNG ENGINEERING**

MACCHI
STEAM & POWER GENERATION
A DIVISION OF SOFINTEP S.p.a.

FOSTER WHEELER

K T I

DAEWOO E&C

TECHINT
Engineering & Construction

PARESA

KELLOGG

TR
TECNICAS REUNIDAS

GE
Nuovo Pignone

Eni
GROUP
Saipem

Bonatti

HYUNDAI
ENGINEERING CO., LTD.

ve

DAELIM

SNC · LAVALIN

JGC

Petrofac

PIRECO
Société de Réalisations Industrielles et Pétrolières

KBR

SK E&C

ANSALDO
CALDAIE S.p.A.

CTJV

cosider کانسیڈر
Canalisations

IREM
FRANCE

Our Main References

END-USERS



Our Main Partners

Our Supplied Automation & Control Solutions, are mainly based on the following System Partners:



Other Vendor Expertise:



Our Competences & Activities

Our Competences :

INPROTEC provides global Solutions, for Industrial Automation, Safety & Process Control Plants, putting together skilled and experienced professionals trained to cover different competences within the whole life cycle of each project, covering:

- Feasibility Study
- Basic Design
- Material Requisitioning
- Project Management
- Control & Safety Systems Engineering
- Application Engineering and Software
- Development
- Control & Safety Systems Hardware Integration
- Inspection and Testing
- Commissioning and Start Up Assistance
- Application, Systems and Operational Training
- Technical Assistance & Maintenance SW & HW

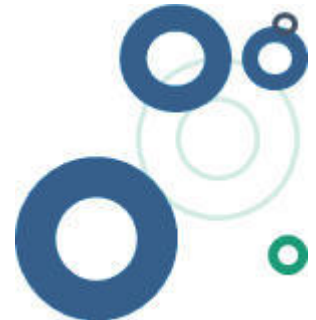
Our Competences & Activities

INPROTEC is a leading Italian company specialized in the Design, Engineering and Supply of Industrial Automation, Safety & Control Systems Solutions mainly for the global Oil & gas, Chemicals and Petrochemical Industries based on:

- ◇ Integrated Control & Safety System, ICSS
- ◇ Distributed Control System, DCS
- ◇ Supervisory and Control System SCADA, RTU
- ◇ Conventional PLC, various Hardware Configuration

- ◇ Emergency Shutdown and Fire & Gas System SIL Certified in accordance with, IEC61508 – 61511, NFPA standards, ESD and F&G
- ◇ Burner Management System, in accordance with NPFA Standard, BMS

- ◇ Leak Detection System, mass Volume or Fiber Optic
- ◇ Terminal Automation System, TAS
- ◇ Tank Gauging and Inventory Systems,
- ◇ Field Instrumentations, Process Control



Our Competences & Activities

INPROTEC act as “Main Automation Supplier” for Turnkey projects, offering a full range of services :

- Basic Design
- Engineering
- Procurement
- System Integration
- Tests , FAT , IFAT
- Site Supervision and Coordination
- SAT , Commissioning & Start up
- Technical Assistance & After Sales Service

Project Engineering & Development

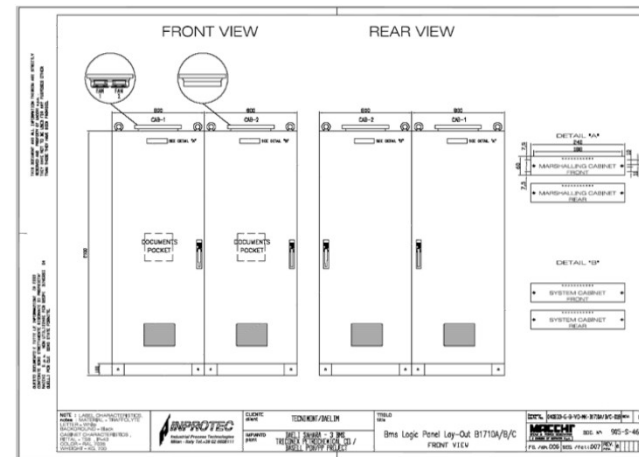
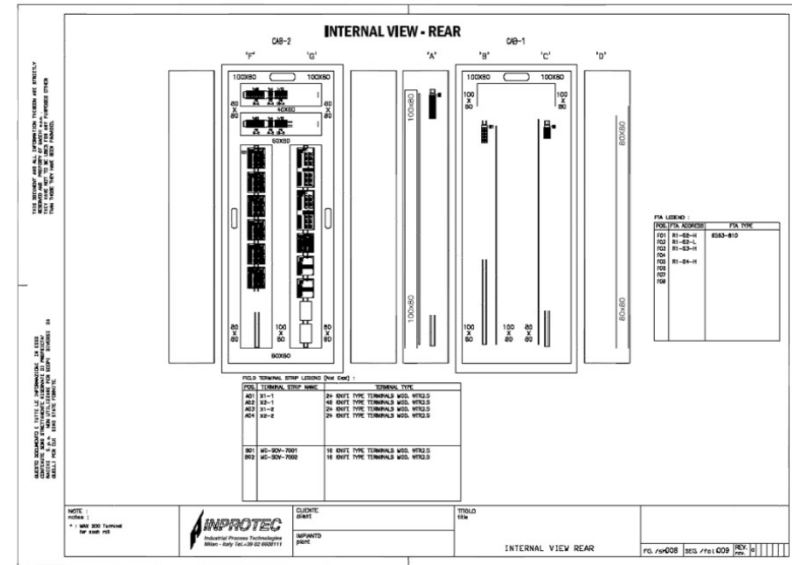
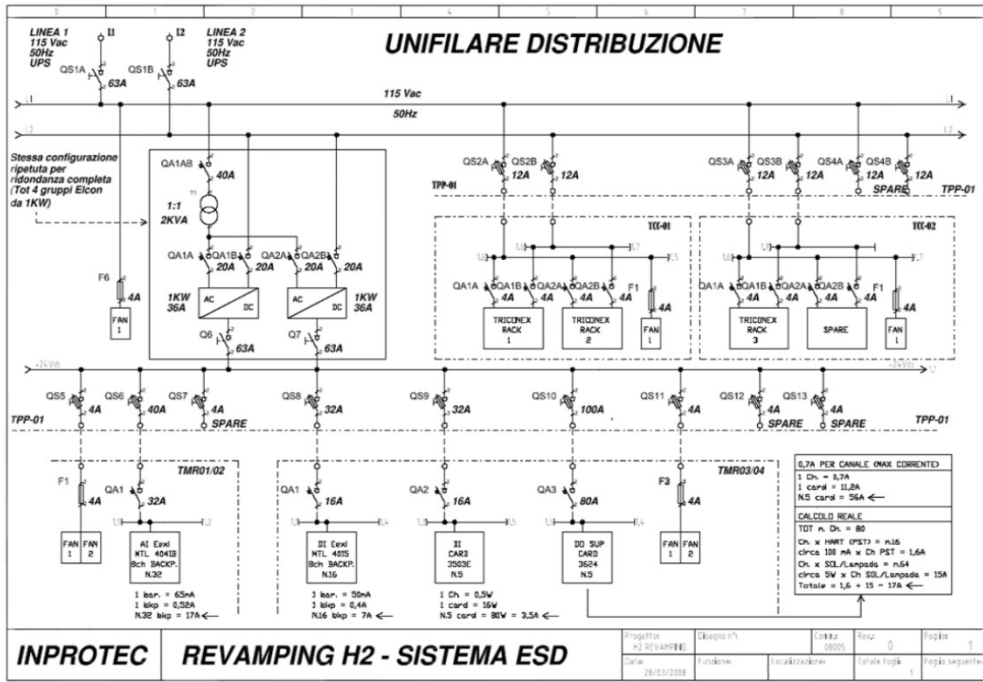
Industrial
Automation

Safety

Process &
Control
Solutions

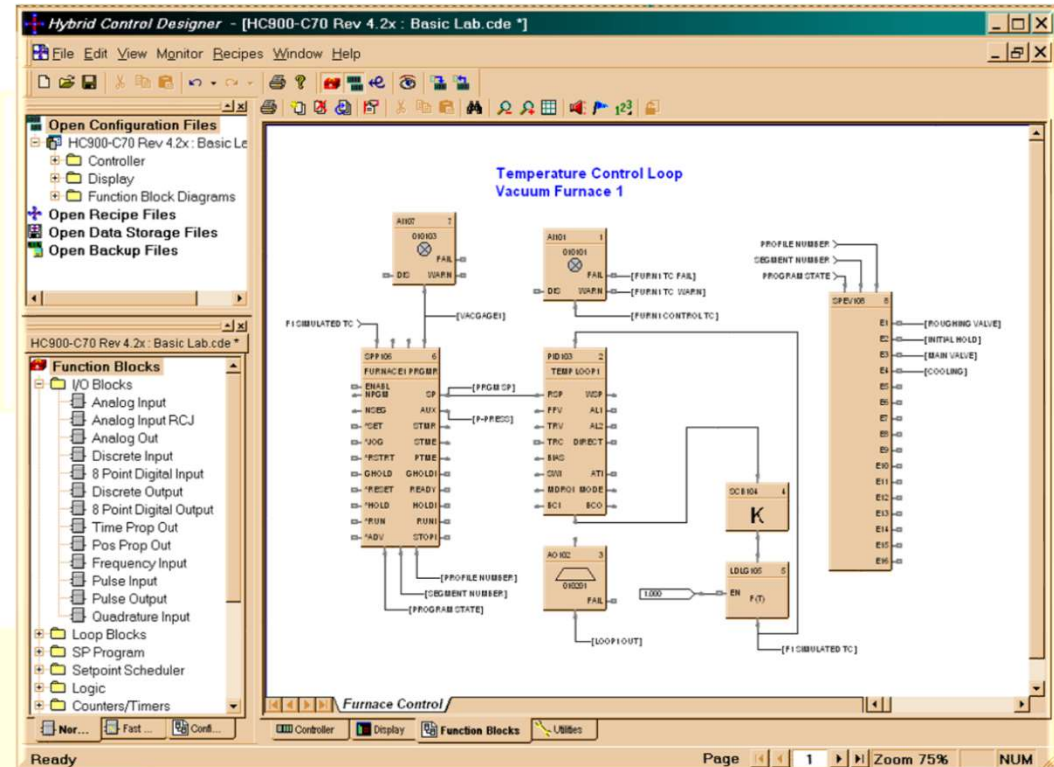
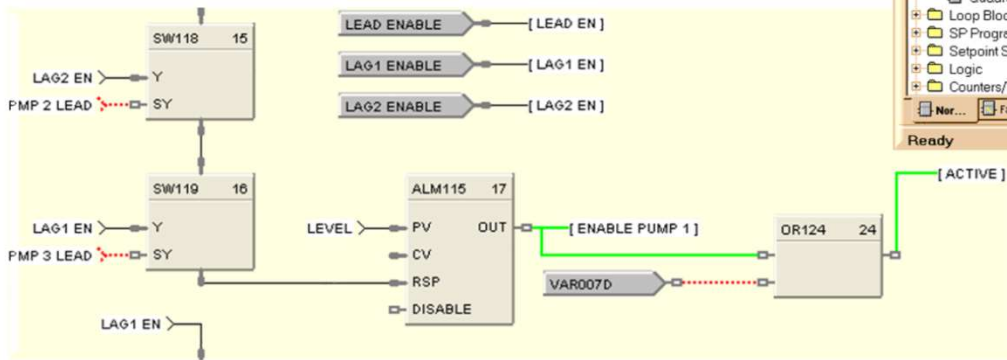
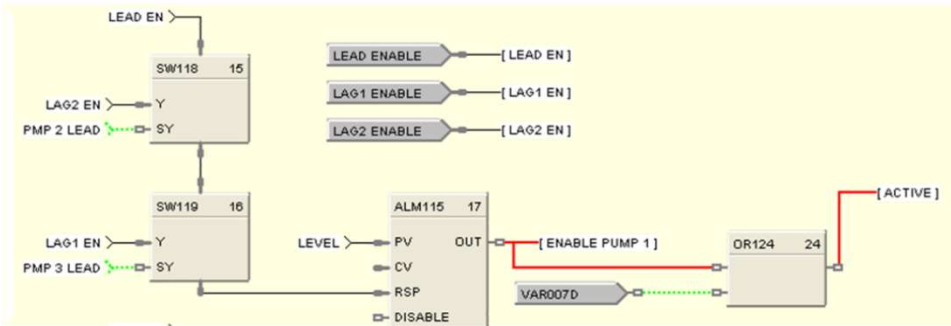
Our Competences & Activities

Project Engineering & Development



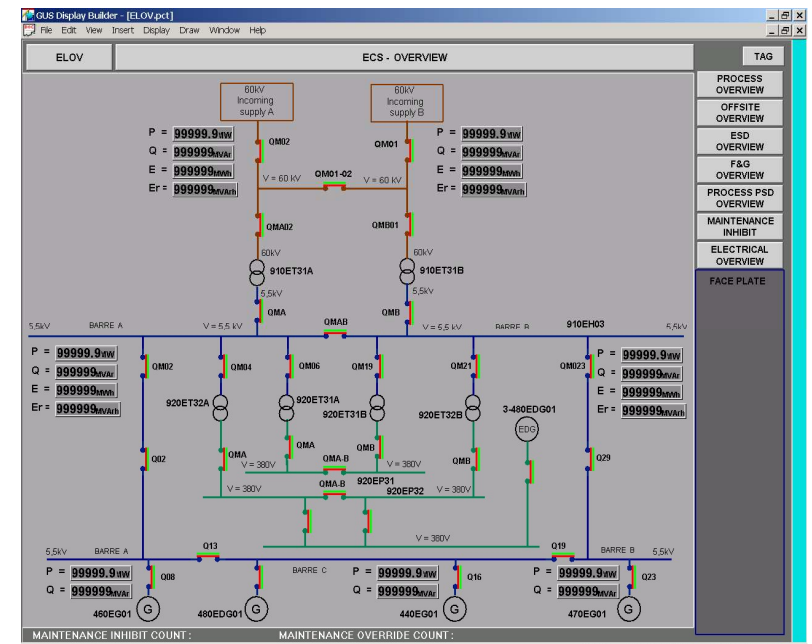
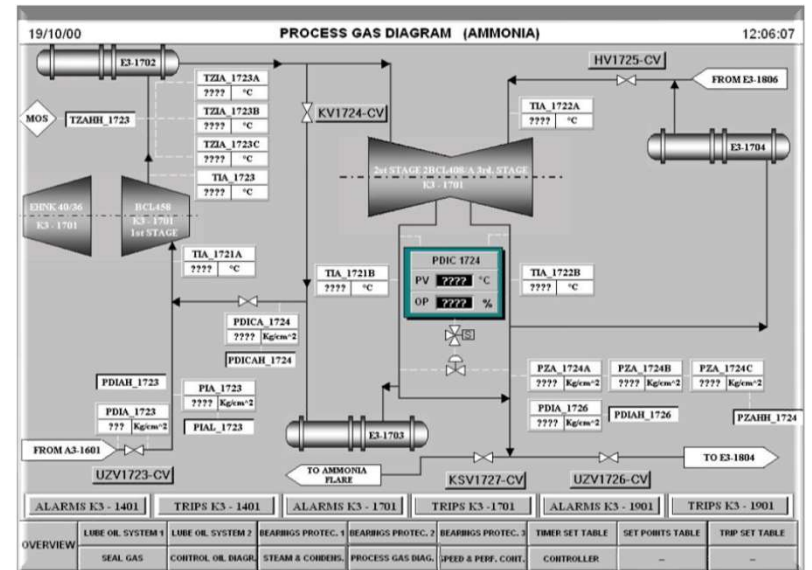
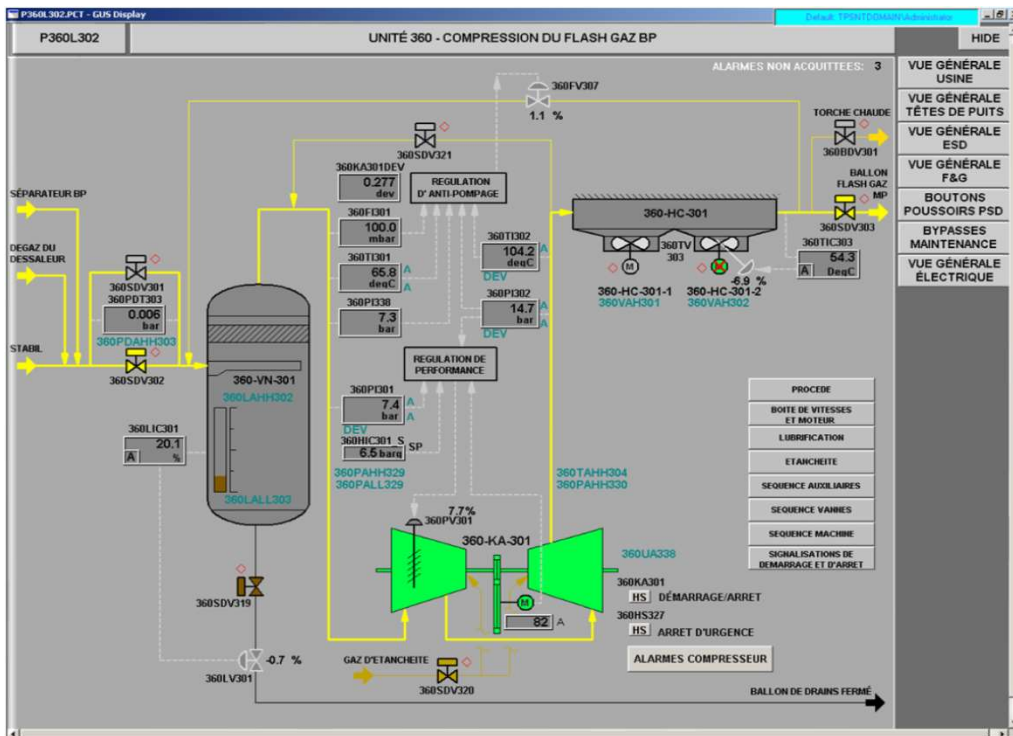
Our Competences & Activities

Software Development



Our Competences & Activities

Scada - HMI



Our Competences & Activities

Cabinets Assembling, Tests FAT, IFAT



Our Electrical & Instrumentation Engineering Activities



Industrial
Automation

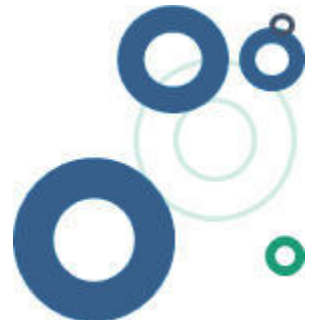
Safety

Process &
Control
Solutions

Our Competences & Activities

INPROTEC through their Electrical and Instrumentation Business Unit, provides Engineering Services, covering:

- Electrical Design and Supply for Process Plants
- Process Plant Instrumentation
- HAZOP Validation
- SIL Calculation and Validation
- Lighting design and building automation



Our Competences & Activities

Supplied Electrical Engineering activities, includes:

- Block diagram
- User list
- One line diagram
- Functional diagram
- Electrical connection sketch
- Cable tray run
- Cable list
- Cable data sheet
- Electrical material data sheet
- Grounding System

- Medium and Low Voltage Panel Engineering and Supply (Power Center, MCC)

Our Competences & Activities

Process Instruments Engineering activities, includes:

- P&ID diagram instrument section
- Instrument list & Instrument data sheet
- Logic, Functional and control diagram
- Loop diagram
- Interlock list
- I/O list
- Instrument distribution drawings
- Primary hook – up connection sketch
- Junction box data sheet

Our Competences & Activities

Process and Instrument Safety:

- Safety integration Level (SIL), Study, Design and Validation
- Hazardous area classifications
- EEx-i circuit coordination
- Lightning protection



Our Electrical Solutions

Industrial
Automation

Safety

Process &
Control
Solutions

Our Competences & Activities

INPROTEC through their Electrical and Instrumentation Business Unit, provides Electrical Solutions, covering mainly:

- MCC Panels
- Switchboard
- LV and MV Switchgears
- Surge Protection

- Power Distribution Panel
- Local Panels



Our Fire & Gas Solutions

Industrial
Automation

Safety

Process &
Control
Solutions

Our Fire & Gas Solutions

Fire & Gas Applications
Supplied Systems &
Solutions



Fire & Gas Systems Solutions Based on Certified Safety PLC
INPROTEC Supply are based on SIL/NFPA Certified Fire & Gas Systems, in
accordance with Client requirements, SIL2, SIL3, based mainly of the
below Systems:

Triconex



Hima



Honeywell



Siemens



Allen Bradley (Rockwell)



Our Fire & Gas Solutions

Honeywell Distributor & Certified Service Center for Honeywell Analytics

Honeywell Analytics
Experts in Gas Detection

Gas Detection
and Monitoring



SIL 2 Certified
Panel

Optical Flame Detectors



Our Fire & Gas Solutions

Fire & Gas Field Devices, Mimics,.....



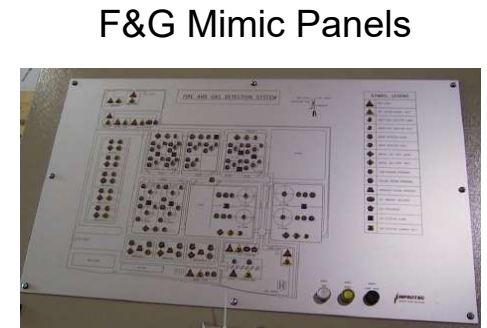
Gas Detectors



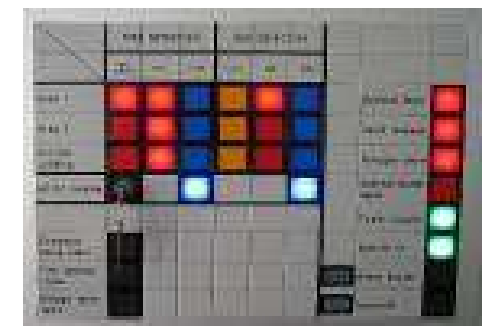
Push Button



Visual Alarm



F&G Mimic Panels



UV/IR Flamme Detectors



Manual Call Points



Horn



Linear Heat Detector



Smoke Detector

Our Field Instrumentation Solutions

Industrial
Automation

Safety

Process &
Control
Solutions

Our Field Instrumentation Solutions



Pressure, Temperature



Flow

Level,
Switches



Our Metering Skids Solutions

Industrial
Automation

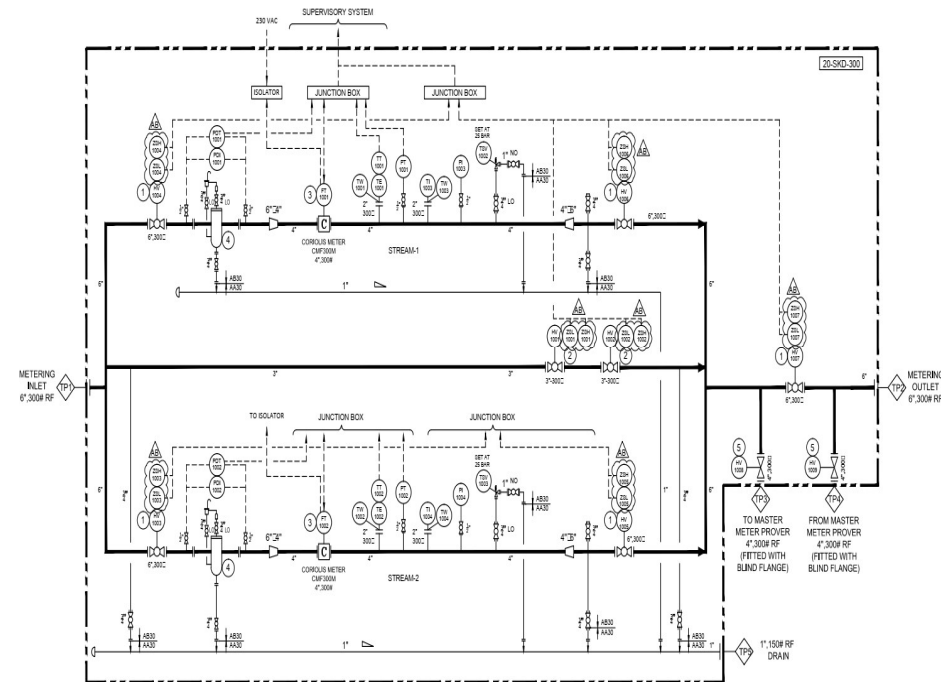
Safety

Process &
Control
Solutions

Our Competences & Activities

INPROTEC is responsible for the Engineering, Fabrication and Delivery of Custody Metering Skid, Single or Redundant Configuration in different Schedule #150, #300, #900,...

The Supply Includes in addition of the Mechanical Skids, all the Integration Services with the Flow Computer and Third party Control Systems.



Our Loading & Metering Solutions

Industrial
Automation

Safety

Process &
Control
Solutions

Our Metering & Loading Solutions

WHO WE SERVE?

- Power Plants
- Small to Large Terminals & Depots
- Bulk Plants
- Refineries
- Asphalt/Bitumen
- Transloading
- Chemical Applications
- Aviation Fueling



Our Metering & Loading Solutions

METERING SOLUTIONS

INPROTEC with their partner SAMPI offer a Complete Solutions, from loosed equipment up to Skid Solutions, including Design, Engineering Manufacturing and Integration.



SKIDS



COMPONENTS



Our Metering & Loading Solutions

- Manufacturers of Metering Components

Meters, Filters, Air eliminators, Valves, Pumps



Rotary Pumps



Pneumatic Valve



Series M- MS



LCSOUND
Air Detector



HPV Digital Version



FD75 Strainer
Air Eliminator

Our Metering & Loading Solutions

- Engineered Solutions for OIL TERMINALS

Including own design, Engineering Manufacturing and Integration

- Top / Bottom (un) Loading
- Custody Transfer
- Blending / Pumping
- Additive Injection
- LPG Skid solutions
- Jet Fuel Solutions



Our Commitment

Using our highly skilled Engineering capabilities, we shall serve our Customers with fully compliant, Technically Excellent, Safe, Reliable and Commercially Attractive Control System Solutions by,

Improving Operational Efficiency,
Increasing Safety & Profitability,
and Reducing risks



Our Major Corporate Clients

أرامكو السعودية
Saudi Aramco



معادن
MA'ADEN
Saudi Arabian Mining Company شركة التعدين العربية السعودية



الشركة السعودية للكهرباء
Saudi Electricity Company

التصنيع
TASNEE



سابك
SABIC

AIRBUS
DEFENCE & SPACE



ABB



لوبريف
luberef

الصحراء
للبتروكيماويات
sahara petrochemicals



NCMS

الحسيس
Al-Osais

TARGET

SAMSUNG

SAMSUNG
ENGINEERING

CONTACT US

Litwin Saudi Arabia Company Ltd

Baghlaf Trade Center | 4th Floor | Office No: 406
P.O. Box 3739 | Al Khobar – KSA.

Tel: +966 (13) 893 8557– Ext – 201

Tel: +966 (13) 893 6889

E Mail : info@litwinksa.com www.litwinksa.com

