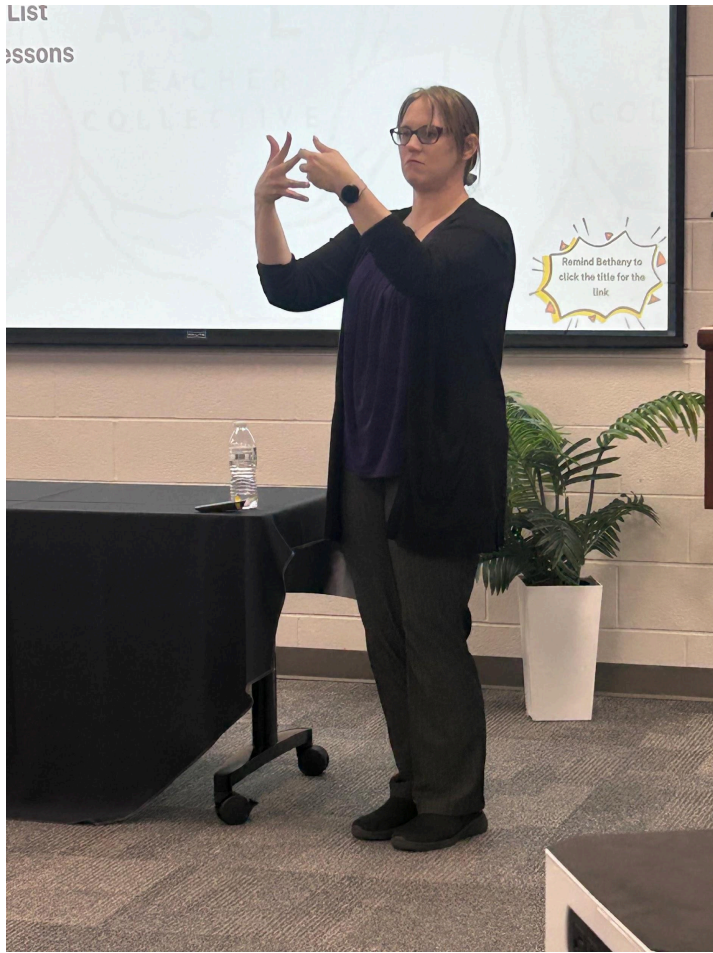


# ASL Teacher Collective



# Empowering ASL Educators

The ASL Teacher Collective was brought to life to ensure that teachers of American Sign Language have access to quality, applicable professional development options. Our goal is to give educators the skills, training and mindset they need to rejuvenate their classrooms and provide their students at all education levels with a dynamic learning environment.

# Who We Are



Jennifer Bennett

Jennifer has over 20 years of experience in the classroom and a Master's Degree in Teaching American Sign Language from the University of Northern Colorado. She currently teaches in the Sign Language Interpreting Program at Tarrant County College.



Bethany Davis

Bethany is dedicated to supporting fellow educators in navigating the challenges of our profession and committed to ongoing collaboration with ASL instructors and the Deaf community to promote best practices in ASL instruction and retention.



Pamela Farley

Pamela has taught in the private school sector since 2017 and given national level presentations since 2015. She is passionate about supporting ASL instructors through content creation to enhance the ASL experience. At home, Pamela's primary communication mode is ASL.



Rebekah Witt

Rebekah is an experienced ASL educator with seven years of teaching and curriculum leadership in high school settings. She is passionate about fostering dynamic, student-centered learning through innovative instruction, professional development, and standards-based practices.

## Session Menu

### Teaching with Immersion in Mind

Personal experience and training is shared to show why and how to teach ASL in a 100% voice off mode. Strategies for approaching the first day of school, minimizing English text and potential solutions for unique situations like the intercom and fire drills will be discussed.

### Creating Student-Centered Expressive Projects

Learn how to develop expressive presentations for students that are relevant, have frequent checkpoints to keep students on the right track, clear expectations, transparent grading, good examples, and flexibility to provide the opportunity for student ownership.

### Interventions and Accommodations

“Productive struggle” does not look the same for every student. Different strategies to assess understanding with techniques like QSSSA will be demonstrated as well as systems that can be scaled to match the needs of individual students.

### The Strategy Board: Executive Skills at Play

Executive Function is a set of skills that control and regulate other skills, enabling us to manage everyday tasks. We cannot assume all students have mastered things like planning, organizing and problem-solving. By using strategy boards and other tools, we can embed executive function into our existing schedule and empower students to succeed.

### Rubrics: Getting Your Squares in Order

Students may prefer the kind of assessment that has 4 answer choices and bubbles, but quality instruction means asking them to create real-world whole language presentations. Criterion-referenced rubrics can help us set expectations, eliminate bias and quickly calculate a grade we can stand behind.

### AI: Your New Player Two

We will explore various AI tools that can be used in lesson planning and educational tasks in an ASL classroom. Participants will have the opportunity to engage with these tools and address their individual needs.

### Choice Boards: Choose Your Own Adventure

Discover how to design and implement choice boards that foster student creativity and growth in expressive, receptive and interpersonal communication. Students have options to ways to show the mastery of content while pushing to new levels in their academic growth.

### Immersion that Inspires

This session explores practical strategies for building an engaging, fully immersive ASL environment without relying on auditory cues. Participants will learn how to establish strong visual norms, implement high-energy instructional routines that limit side conversations, and use nonverbal classroom management techniques that promote accountability and attention. The workshop also highlights sustainable practices that support teacher well-being, including student-led structures, reusable visual tools, and low-prep differentiation. Attendees will leave with a clear 5-point plan for increasing engagement, reducing off-task behavior, and strengthening immersion in the ASL classroom.

## Session Menu

### Emotional Engagement in ASL

This session explores the powerful intersection of Social-Emotional Learning (SEL) and American Sign Language to strengthen student–teacher relationships and enhance campus-wide understanding of ASL instruction. Participants will learn strategies for embedding emotional engagement into ASL lessons, creating more responsive and connected classroom environments. In addition, this session provides ways to advocate with administrators with valuable insight into the linguistic and cultural components of ASL, offering teachable moments that build empathy and support for ASL educators. Attendees will leave with practical tools for fostering meaningful connections through intentional, SEL-driven ASL instruction.

### Healing Through Habits

This session focuses on teacher well-being through sustainable, approachable self-care practices. Participants will examine how small, intentional changes to daily or weekly routines can significantly improve their emotional resilience, energy, and job satisfaction. Through guided reflection and practical examples, attendees will identify habits that nurture their personal and professional needs while reducing burnout. The session emphasizes proactive, manageable strategies that empower educators to care for themselves consistently—ultimately strengthening their capacity to care for others.

### Interactive Activities

This collaborative jigsaw session brings educators together to share, explore, and refine effective practices that support strong teaching and healthy professional relationships. Participants will rotate through focused discussions on teaching ASL in the target language, using SEL to enhance interactions with colleagues, and adopting time-saving systems that protect mental health. By learning from peers and contributing their own expertise, attendees will gain a diverse set of actionable strategies they can implement immediately. This session prioritizes practical exchange, professional connection, and sustainable teaching solutions.