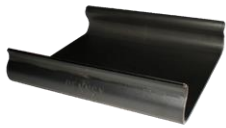


## TRUCKS/BOGIES



**Pedestal Roof Liner**  
PN2545



**Durabowl LT Polymer Horizontal Wear Liner**  
PN2529 (16" x 1/4" thick)  
PN2678 (16" x 1/8" thick)  
PN2531 (14" x 1/4" thick)  
PN2680 (14" x 1/8" thick)



**Durabowl LT Polymer Center Bowl Wear Liner**  
PN1563 (16" X 2")  
PN1565 (16" X 2-1/4")

## WHEEL CHOCKS



**Angled Long Handle**  
PN1739



**Adjustable Handle**  
PN2434



**Standard Long Handle**  
PN1033



**Heavy Duty**  
PN1037

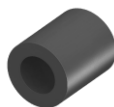
## MISC.



**Lumber Corner Protector**  
PN1466

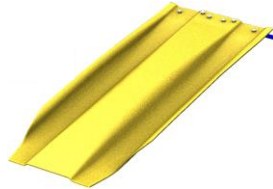


**Centerbeam Tie-Down**  
PN2772



**Uncoupling Lever Bracket Filler**  
PN2726

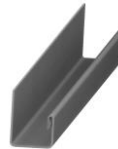
## AUTORACK



**Bridge Plate**  
PN2734 (53")  
PN2730 (56")



**Push-In Fastener**  
PN2736



**Side Screen Protector**  
PN2715



**Panel Corner Protector**  
PN2699

## SAFETY



**Lightweight Rerailer**  
Compatible with 90 to 155lbs rail  
PN2676



**Rerailer Carriers**  
Hook PN2674  
Rope PN2672  
Locomotive PN2631



**Polymer Rerailer**  
PN2752



**Jack Pad**  
PN2450

## COUPLER



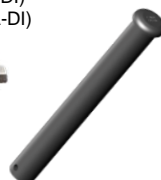
**Knuckle Lock**  
PN5500 (E42A-DI)  
PN5510 (F41A-DI)  
PN5512 (RF41A-DI)



**Coupler Carrier Wear Plate**  
PN2500 (1/2")  
PN2746 (3/8")  
PN2748 (5/8")  
PN2759 (Manganese 7/16")



**Knuckle Thrower**  
PN5600 (E30)  
PN5610 (F31)



**C-10 Knuckle Pin**  
PN5400



**Locklift**  
PN5300 (E24B)  
PN5310 (F7)

## BRAKE COMPONENTS



**Quick-Clip Air Hose Support**  
PN2764



**Forged Brake Shoe Key**  
PN2701



**Resilient Air Brake Hose Support Strap**  
PN2485



**Brake Actuator Indicator**  
PN2228



**Heavy Duty Air Brake Hose Support**  
PN2457



**Bottom Rod Support**  
PN2508 (31")  
PN2754 (44-1/2")



**Brake Beam Strut Protector**  
PN2432



**Trainline Trolley Loop**  
PN1807



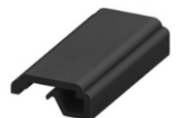
**Brake Beam Guide**  
PN1511



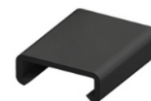
**Brake Rod Slider**  
PN2321



**Brake Rod Bracket Wear Protector**  
PN2393



**Brake Hanger Wear Protector**  
PN1719



**Brake Rod Wear Protector**  
PN2644



**Brake Rod Axle Protector**  
PN2505/PN2646

## PENNSY Corporation

515 S. Franklin Street, Ste 100  
West Chester, PA 19382  
(610) 692-8618 Phone (610) 692-6478 Fax

For more information about our products visit us online at  
[www.pennsy.com](http://www.pennsy.com)