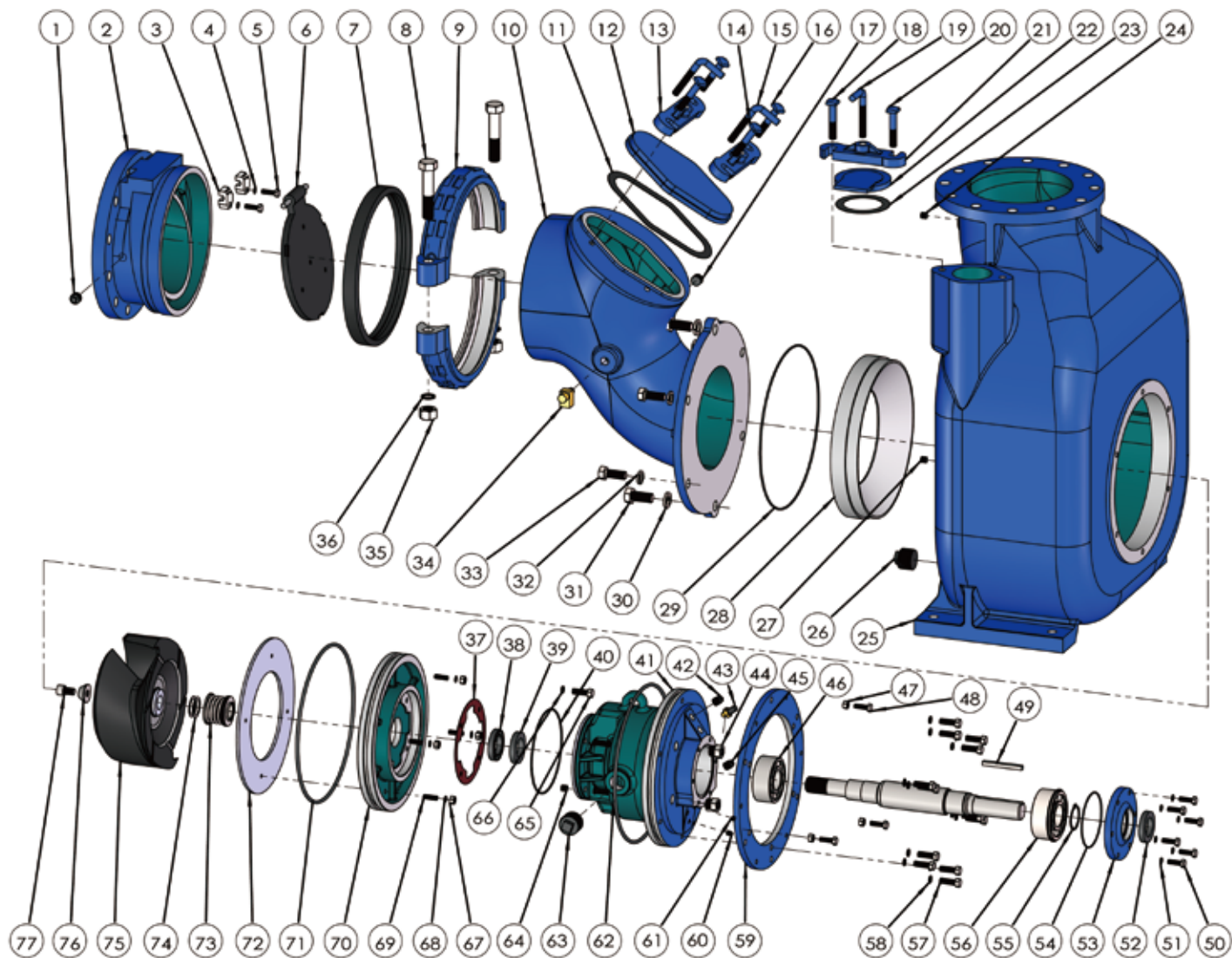


▲ MCST-10  
90° SECTIONAL VIEW



## PARTS LIST PUMP MODEL MCST 10"

| ITEM NO. | PART NAME                     | PART NUMBER   | MATI'L   | QTY. | ITEM NO. | PART NAME               | PART NUMBER   | MATI'L   | QTY. |
|----------|-------------------------------|---------------|----------|------|----------|-------------------------|---------------|----------|------|
| 1        | PIPE PLUG                     | 105101000012  | Q235     | 1    | 19       | CLAMP BAR SCREW         | 188200100000C | WCB      | 1    |
| 2        | SUCTION FLG                   | 347200000010A | HT250    | 1    | 20       | MACHINE BOLT            | 101380058003  | Q235     | 1    |
| 3        | PIVOT CAP                     | 344200000010A | HT250    | 2    | 21       | CLAMP BAR               | 345200300000B | QT450    | 1    |
| 4        | LOCK WASHER                   | 111010100038  | Q235     | 2    | 22       | FILL CVR                | 345200200000B | QT450-10 | 1    |
| 5        | HEX HD CAPSCREW               | 101001380112  | Q235     | 2    | 23       | GSKT, FILL CVR          | 118201110127  | NBR      | 1    |
| 6        | * CHECK VALVE                 | 118201210320  | NBR      | 1    | 24       | PIPE PLUG               | 105401000014  | Q235     | 1    |
| 7        | SEAL RING, SHOULDER TYPE CPLG | 188200600010  | RUBBER   | 1    | 25       | PUMP CASING             | 301201000010A | HT250    | 1    |
| 8        | HEX HD CAPSCREW               | 101001340512  | Q235     | 2    | 26       | PIPE PLUG               | 105101000114  | Q235     | 1    |
| 9        | SHOULDER TYPE CPLG            | 345200400010B | QT450-10 | 2    | 27       | PIPE PLUG               | 105101000012  | Q235     | 1    |
| 10       | SUCTION ELBOW                 | 345200510010A | HT250    | 1    | 28       | * FRONT WEAR PLATE ASSY | 338200000010B | QT450    | 1    |
| 11       | * GSKT, CLEAN OUT CVR         | 118201500314  | RUBBER   | 1    | 29       | * O-RING                | 131000390500  | NBR      | 1    |
| 12       | CLEAN OUT COVER               | 345200900010A | HT250    | 1    | 30       | LOCKWASHER              | 111010100708  | Q235     | 2    |
| 13       | CLAMP BAR                     | 345200300000B | QT450    | 2    | 31       | HEX HD CAPSCREW         | 101001780200  | Q235     | 2    |
| 14       | MACHINE BOLT                  | 101380058003  | Q235     | 2    | 32       | LOCKWASHER              | 111010100034  | Q235     | 4    |
| 15       | CLAMP BAR SCREW               | 188200100000C | WCB      | 2    | 33       | HEX HD CAPSCREW         | 101001340158  | Q235     | 4    |
| 16       | MACHINE BOLT                  | 101380058003  | Q235     | 2    | 34       | AIR VENT PLUG           | 199000000052  | BRASS    | 1    |
| 17       | PIPE PLUG                     | 105101000114  | Q235     | 1    | 35       | HEX NUT                 | 103001000034  | Q235     | 2    |
| 18       | MACHINE BOLT                  | 101380058003  | Q235     | 1    | 36       | LOCKWASHER              | 111010100034  | Q235     | 2    |

## PARTS LIST \*ROTATING ASSEMBLY

| ITEM NO. | PART NAME            | PART NUMBER   | MATI'L        | QTY. | ITEM NO. | PART NAME               | PART NUMBER   | MATI'L          | QTY. |
|----------|----------------------|---------------|---------------|------|----------|-------------------------|---------------|-----------------|------|
| 37       | * GSKT, SEAL PLATE   | 118200100206  | ARAMID FIBERS | 1    | 58       | LOCKWASHER              | 111010100012  | Q235            | 12   |
| 38       | * OIL SEAL           | 109020076120  | NBR           | 1    | 59       | ASSEMBLY PLATE          | 3452006108100 | Q235            | 1    |
| 39       | * OIL SEAL           | 109020076120  | NBR           | 1    | 60       | PIPE PLUG               | 105401000014  | Q235            | 1    |
| 40       | * O-RING             | 131000195355  | NBR           | 1    | 61       | PIPE PLUG               | 105401000014  | Q235            | 1    |
| 41       | BRG HOUSING          | 304201000010A | HT250         | 1    | 62       | O-RING                  | 131000360700  | NBR             | 1    |
| 42       | PIPE PLUG            | 105101000013  | Q235          | 1    | 63       | PIPE PLUG               | 105101000114  | Q235            | 1    |
| 43       | * PRESS RELIEF VALVE | 199000000052  | BRASS         | 1    | 64       | PIPE PLUG               | 105501000014  | Q235            | 1    |
| 44       | SIGHT GAUGE          | 114200000003  | 304SS         | 2    | 65       | HEX HD CAPSCREW         | 101002120134  | 304SS           | 4    |
| 45       | PIPE PLUG            | 105101100034  | Q235          | 1    | 66       | LOCKWASHER              | 111011100012  | 304SS           | 4    |
| 46       | * INBOARD BALL BRG   | 106020053100  | NA            | 1    | 67       | HEX NUT                 | 103011000038  | 304SS           | 4    |
| 47       | HEX NUT              | 103001000012  | Q235          | 3    | 68       | LOCKWASHER              | 111011100038  | 304SS           | 4    |
| 48       | HEX HD CAPSCREW      | 101001120112  | Q235          | 3    | 69       | STUD                    | 102201380114  | 304SS           | 4    |
| 49       | * SHAFT KEY          | 110011038400  | 304SS         | 1    | 70       | SEAL PLATE              | 303202000010A | HT250           | 1    |
| 50       | HEX HD CAPSCREW      | 101001380114  | Q235          | 6    | 71       | * O-RING                | 131000360700  | NBR             | 1    |
| 51       | LOCKWASHER           | 111010100038  | Q235          | 6    | 72       | * WEAR PLATE ASSY       | 3382010000100 | Q235            | 1    |
| 52       | * OIL SEAL           | 109020076120  | NBR           | 1    | 73       | * MECHANICAL SEAL       | 107420118751  | S-S-FKM-316-630 | 1    |
| 53       | BRG CVR, INBOARD     | 341200008106A | HT250         | 1    | 74       | * IMPELLER ADJ SHIM SET | 188200400505D | 304SS           | 7    |
| 54       | * O-RING             | 131000130355  | NBR           | 1    | 75       | * IMPELLER              | 302202000010B | QT450-10        | 1    |
| 55       | RETAINING RING       | 112040000055  | 65Mn          | 1    | 76       | * IMPELLER WASHER       | 111203000061  | 304SS           | 1    |
| 56       | * OUTBOARD BALL BRG  | 106020053110  | NA            | 1    | 77       | * SOCKET HD CAPSCREW    | 101111580001  | 304SS           | 1    |
| 57       | HEX HD CAPSCREW      | 101001120112  | Q235          | 12   |          |                         |               |                 |      |

\*INDICATES PARTS RECOMMENDED FOR STOCK.

IF YOUR PUMP IS NOT A STANDARD PRODUCTION MODEL, CONTACT THE M&C PUMPS CO.,LTD TO VERIFY PART NUMBERS.