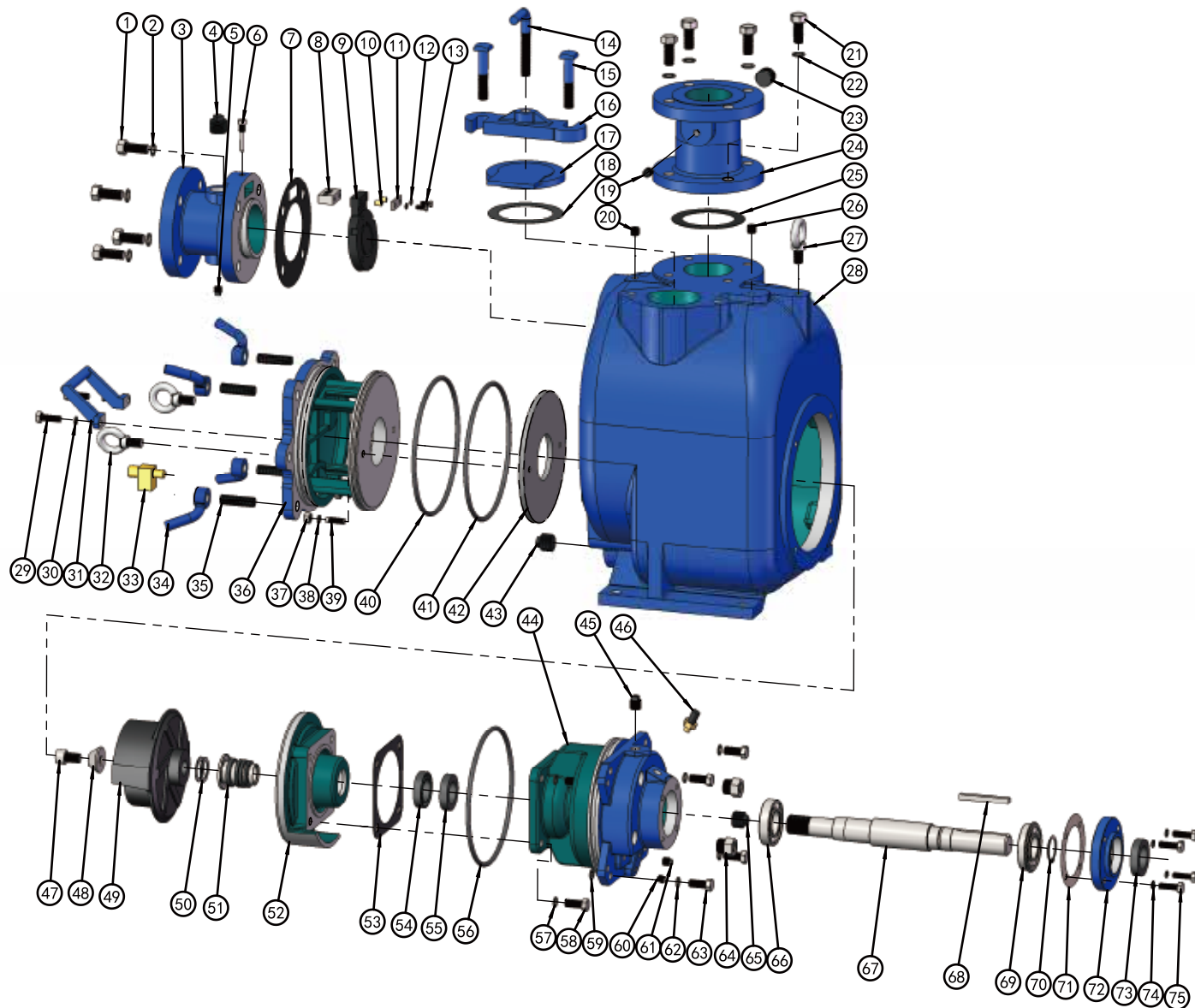


▲ MCST-3  
90° SECTIONAL VIEW



## PARTS LIST PUMP MODEL MCST 3"

ITEM NO.	PART NAME	PART NUMBER	MAT'L	QTY.	ITEM NO.	PART NAME	PART NUMBER	MAT'L	QTY.
1	HEXHD CAPSCREW	101001508134	Q235	4	23	PIPE PLUG	105101000001	Q235	1
2	LOCKWASHER	111010100058	Q235	4	24	DISCHARGE FLG	348200000003A	HT250	1
3	SUCTION FLG	347200000003A	HT250	1	25 *	GSKT, DISCH FLG	118201110127	NBR	1
4	PIPE PLUG	105101000001	Q235	1	26	PIPE PLUG	105501000014	Q235	1
5	PIPE PLUG	105401000014	Q235	1	27	LIFTING BOLT	104500000016	Q235	1
6	CHECK VALVE PIN	101410042018	304SS	1	28	PUMP CASING	301201000003A	HT250	1
7 *	SUCTION FLG GSKT	118200510188	NBR	1	29	HEXHD CAPSCREW	101001380001	Q235	2
8 *	PIVOT CAP	344200000003D	304SS	1	30	LOCKWASHER	111011100038	Q235	2
9 *	CHECK VALVE	118201210132	NBR	1	31	COVER PLATE HANDLE	313210003468C	WCB	1
10 *	BRONZE PIPE	188200200006N	BRONZE	2	32	LIFTING BOLT	104500000022	Q235	2
11 *	GSKT, PIVOT CAP	118201400044	SS304	1	33 *	PRESS RELIEF VALVE	188200300012N	BRONZE	1
12 *	LOCKWASHER	111011000006	SS304	2	34	HAND NUT	312200000034C	WCB	4
13 *	HEXHD CAPSCREW	101010006025	SS304	2	35	STUD	102301340003	Q235	4
14	CLAMP BAR SCREW	188200100000C	WCB	1	36	BACK COVER PLATE	339201000003A	HT250	1
15	MACHINE BOLT	101380058003	Q235	2	37	HEXNUT	103011000038	304SS	2
16	CLAMP BAR	345200300000B	QT450-10	1	38	LOCKWASHER	111011100038	304SS	2
17	FILL COVER	345200200000B	QT450-10	1	39	STUD	102011380112	304SS	2
18 *	GSKT, FILL COVER	118201110127	NBR	1	40 *	O-RING	131000229070	NBR	1
19	PIPE PLUG	105401000014	Q235	1	41 *	O-RING	131000002187	NBR	1
20	PIPE PLUG	105501000014	Q235	1	42 *	WEAR PLATE ASSY	338200000003O	Q235	1
21	HEX HD CAPSCREW	101001508134	Q235	4	43	PIPE PLUG	105101000001	Q235	1
22	LOCKWASHER	111010100058	Q235	4					

## PARTS LIST \*ROTATING ASSEMBLY

ITEM NO.	PART NAME	PART NUMBER	MAT'L	QTY.	ITEM NO.	PART NAME	PART NUMBER	MAT'L	QTY.
44	BEARING HOUSING	304201000003A	HT250	1	60	PIPE PLUG	105401000014	Q235	1
45	PIPE PLUG	105101000013	Q235	1	61	PIPE PLUG	105401000014	Q235	1
46	AIR VENT PLUG	199000000052	BRONZE	1	62	LOCKWASHER	111010100012	Q235	4
47 *	SOCKET HD CAPSCREW	101111580001	304SS	1	63	HEX HD CAPSCREW	101001120112	Q235	4
48 *	IMPELLER WASHER	302202000003B	304SS	1	64	SIGHT GAUGE	114200000003	SS304	2
49 *	IMPELLER	302202000003B	QT450-10	1	65	PIPE PLUG	105101100034	Q235	1
50 *	IMPELLER ADJ SHIM SET	188200400445D	304SS	7	66 *	INBOARD BALL BRG	106020062080	NA	1
51 *	MECHANICAL SEAL	107420115001	S-S-FKM-316-630	1	67 *	SHAFT	305201000003Q	4140	1
52	SEAL PLATE	303202000003A	HT250	1	68 *	SHAFT KEY	110011038312	304SS	1
53 *	SEAL PLATE GSKT	118200100151	ARAMID FIBERS	1	69 *	OUTBOARD BALL BRG	106021062087	NA	1
54 *	OIL SEAL	109010040013	NBR	1	70	RETAINING RING	112040000040	65Mn	1
55 *	OIL SEAL	109010040013	NBR	1	71 *	GSKT, BRG COVER	118201000092	ARAMID FIBERS	1
56 *	O-RING	131000229070	NBR	1	72	BRG COVER, INBOARD	341200000023A	HT250	1
57	LOCKWASHER	111011100012	304SS	4	73 *	OIL SEAL	109010040013	NBR	1
58	HEX HD CAPSCREW	101011120114	304SS	4	74	LOCKWASHER	111010100038	Q235	4
59	FLAT WASHER	111000251316	Q235	8	75	HEX HD CAPSCREW	101001380114	Q235	4

\*INDICATES PARTS RECOMMENDED FOR STOCK.

IF YOUR PUMP IS NOT A STANDARD PRODUCTION MODEL, CONTACT THE M&C PUMPS CO.,LTD TO VERIFY PART NUMBERS.