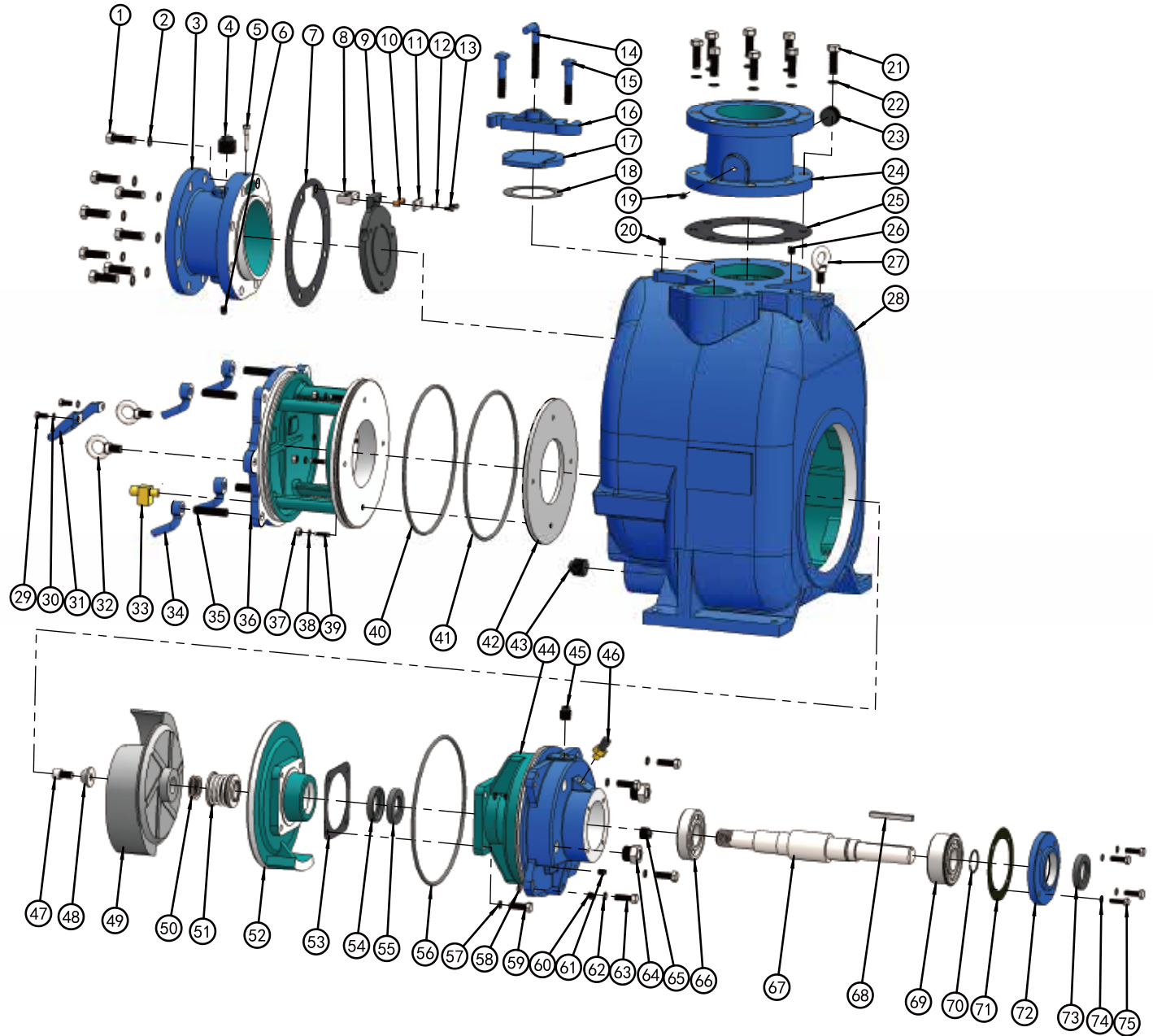


▲ MCST-6
90° SECTIONAL VIEW



PARTS LIST PUMP MODEL MCST 6"

ITEM NO.	PART NAME	PART NUMBER	MAT'L	QTY.	ITEM NO.	PART NAME	PART NUMBER	MAT'L	QTY.
1	HEX HD CAPSCREW	101001340002	Q235	8	23	PIPE PLUG	105101000001	Q235	1
2	LOCKWASHER	111010100034	Q235	8	24	DISCH FLG	348200000006A	HT250	1
3	SUCTION FLG	347200000006A	HT250	1	25 *	GSKT, DISCH FLG	118200610217	NBR	1
4	PIPE PLUG	105101000001	Q235	1	26	PIPE PLUG	105501000014	Q235	1
5 *	CHECK VALVE PIN	101410042014	304SS	1	27	LIFTING BOLT	104500000016	Q235	1
6	PIPE PLUG	105401000014	Q235	1	28	PUMP CASING	301201000006E	HT250	1
7	SUCTION FLG GSKT	118200510275	NBR	1	29	HEX HD CAPSCREW	101001380001	Q235	2
8	PIVOT CAP	344200000006D	304SS	1	30	LOCKWASHER	111011100038	Q235	2
9 *	CHECK VALVE	118201210218	NBR	1	31	CVR PLATE HANDLE	313210003468C	WCB	1
10 *	BRONZE PIPE	188200200010N	BRONZE	2	32	LIFTING BOLT	104500000022	Q235	2
11 *	GSKT, PIVOT CAP	118201400050	304SS	1	33 *	PRESS RELIEF VALVE	188200300012N	BRONZE	1
12 *	LOCKWASHER	111011000008	304SS	2	34	HAND NUT	312200000034D	WCB	4
13 *	HEX HD CAPSCREW	101010008030	304SS	2	35	STUD	102101340312	Q235	4
14	CLAMP BAR SCREW	188200100000D	WCB	1	36	BACK COVER PLATE	339201000006A	HT250	1
15	MACHINE BOLT	101380058003	Q235	2	37	HAND NUT	103011000038	304SS	4
16	CLAMP BAR	345200300000B	QT450	1	38	LOCKWASHER	111011100038	304SS	4
17	FILL COVER PLATE	345200200000B	QT450	1	39	STUD	102011380158	304SS	4
18 *	GSKT, FILL COVER	118201110127	NBR	1	40 *	O-RING	131000316070	NBR	1
19	PIPE PLUG	105401000014	Q235	1	41 *	O-RING	131000316070	NBR	1
20	PIPE PLUG	105501000014	Q235	1	42 *	WEAR PLATE ASSY	338200000006O	Q235	1
21	HEX HD CAPSCREW	101001340002	Q235	8	43	PIPE PLUG	105101000114	Q235	1
22	LOCKWASHER	111010100034	Q235	8					

PARTS LIST *ROTATING ASSEMBLY

ITEM NO.	PART NAME	PART NUMBER	MAT'L	QTY.	ITEM NO.	PART NAME	PART NUMBER	MAT'L	QTY.
44	BRG HOUSING	304201000006A	HT250	1	60	PIPE PLUG	105401000014	Q235	1
45	PIPE PLUG	105101000013	Q235	1	61	PIPE PLUG	105401000014	Q235	1
46	AIR VENT PLUG	199000000052	BRONZE	1	62	LOCKWASHER	111010100012	Q235	4
47 *	SOCKET HD CAPSCREW	101111580001	304SS	1	63	HEX HD CAPSCREW	101001120158	Q235	4
48 *	IMPELLER NUT	111203000061	304SS	1	64	SIGHT GAUGE	114200000003	304SS	2
49 *	IMPELLER	302201000006B	QT450	1	65	PIPE PLUG	105101100034	Q235	1
50 *	IMPELLER ADJ SHIM SET	188200400505D	304SS	7	66 *	INBOARD BALL BRG	106020063101	NA	1
51 *	MECHANICAL SEAL	107420118751	S-S-FKM-316-630	1	67 *	SHAFT	305201000006Q	4140	1
52	SEAL PLATE	303201000006A	HT250	1	68 *	SHAFT KEY	110011038312	304SS	1
53 *	GSKT, SEAL PLATE	118200100151	ARAMID FIBERS	1	69 *	OUTBOARD BALL BRG	106020053101	NA	1
54 *	OIL SEAL	109020076120	NBR	1	70	RETAINING RING	112040005032	65Mn	1
55 *	OIL SEAL	109020076120	NBR	1	71 *	GSKT, BRG COVER	118201000152	ARAMID FIBERS	1
56	O-RING	131000316070	NBR	1	72	BRG COVER, INBOARD	341200000006A	HT250	1
57	LOCK WASHER	111011100012	304SS	4	73 *	OIL SEAL	109020076120	NBR	1
58	FLAT WASHER	111000251316	Q235	8	74	LOCKWASHER	111010100038	Q235	4
59	HEX HD CAPSCREW	101011120112	304SS	4	75	HEX HD CAPSCREW	101001380114	Q235	4

*INDICATES PARTS RECOMMENDED FOR STOCK.

IF YOUR PUMP IS NOT A STANDARD PRODUCTION MODEL. CONTACT THE M&C PUMPS CO.,LTD TO VERIFY PART NUMBERS.