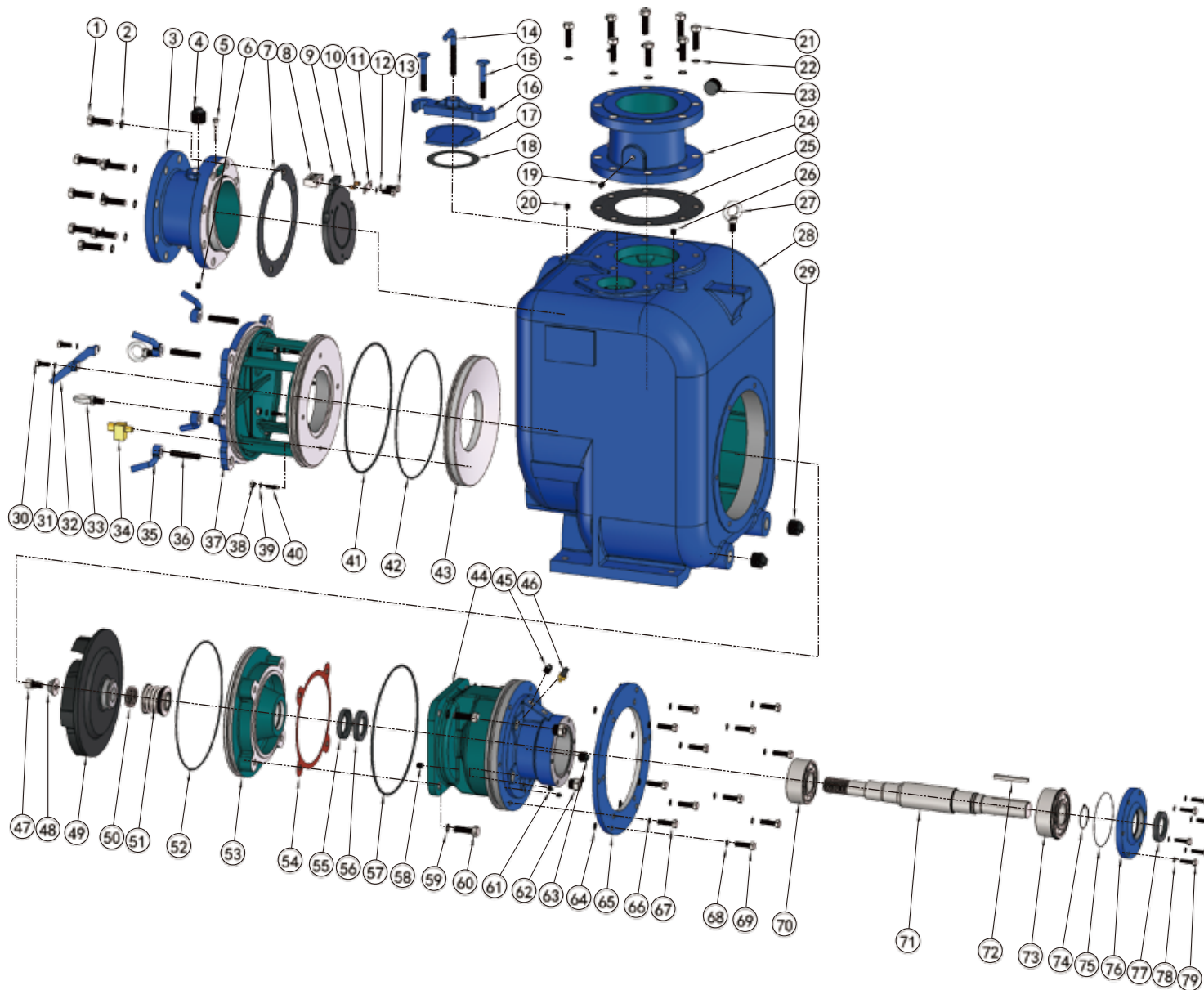


▲ MCSU-6
90° SECTIONAL VIEW



PARTS LIST PUMP MODEL MCSU 6"

ITEM NO.	PART NAME	PART NUMBER	MAT'L	QTY.	ITEM NO.	PART NAME	PART NUMBER	MAT'L	QTY.
1	HEX HD CAPSCREW	101001340002	Q235	8	23	PIPE PLUG	105101000001	Q235	1
2	LOCKWASHER	111010100034	Q235	8	24	DISCH FLG	348200000006A	HT250	1
3	SUCTION FLG	347200000006A	HT250	1	25 *	DISCH FLG GSKT	118200610217	NBR	1
4	PIPE PLUG	105101000001	Q235	1	26	PIPE PLUG	105501000014	Q235	1
5 *	CHECK VALVE PIN	101410042014	304SS	1	27	LIFTING BOLT	104500000016	Q235	1
6	PIPE PLUG	105401000014	Q235	1	28	PUMP CASING	301211000006A	HT250	1
7 *	GSKT,SUCTION FLG	118200510275	NBR	1	29	PIPE PLUG	105101000114	Q235	2
8 *	PIVOT CAP	344200000006D	304SS	1	30	HEX HD CAPSCREW	101001380001	Q235	2
9 *	CHECK VALVE	118201210218	NBR	1	31	LOCKWASHER	111010100038	Q235	2
10 *	BRONZE PIPE	188200200010N	BRONZE	2	32	CVR PLATE HANDLE	313210003468C	WCB	1
11 *	GASKET,PIVOT CAP	118201400050	304SS	1	33	EYE BOLT	104500000022	Q235	2
12 *	LOCKWASHER	111011000008	304SS	2	34 *	PRESS RELIEF VALVE	188200300012N	BRASS	1
13 *	HEX HD CAPSCREW	101010008030	304SS	2	35	HAND NUT	312200000034C	WCB	4
14	CLAMP BAR SCREW	188200100000C	WCB	1	36	STUD	102101340314	Q235	4
15	MACHINE BOLT	101380058003	Q235	2	37	BACK COVER PLATE	339211000006A	HT250	1
16	CLAMP BAR	345200300000B	QT450	1	38	HAND NUT	103011000038	304SS	4
17	FILL COVER PLATE	345200200000B	QT450	1	39	LOCKWASHER	111011100038	304SS	4
18 *	GSKT,FILL COVER PLATE	118201110127	NBR	1	40	STUD	102011380158	304SS	4
19	PIPE PLUG	105401000014	Q235	1	41 *	O-RING	131000340571	NBR	1
20	PIPE PLUG	105501000014	Q235	1	42 *	O-RING	131000340570	NBR	1
21	HEX HD CAPSCREW	101001340002	Q235	8	43 *	WEAR PLATE ASSY	338210000006B	QT450	1
22	LOCKWASHER	111010100034	Q235	8					

PARTS LIST *ROTATING ASSEMBLY

ITEM NO.	PART NAME	PART NUMBER	MAT'L	QTY.	ITEM NO.	PART NAME	PART NUMBER	MAT'L	QTY.
44	BRG HOUSING	304211000006A	HT250	1	62	SIGHT GAUGE	114200000003	304SS	2
45	PIPE PLUG	105101000013	Q235	1	63	PIPE PLUG	105101100034	Q235	1
46	AIR VENT PLUG	199000000052	BRASS	1	64	FLAT WASHER	111000251316	Q235	12
47 *	SOCKET HD CAPSCREW	101111580001	304SS	1	65	ASSEMBLY PLATE	345210010006O	Q235	1
48 *	IMPELLER NUT	111203000061	304SS	1	66	LOCKWASHER	111010100012	Q235	6
49 *	IMPELLER	302212000006B	QT450	1	67	HEX HD CAPSCREW	101001120112	Q235	6
50 *	IMPELLER ADJ SHIM SET	188200400505D	304SS	7	68	LOCKWASHER	111010100012	Q235	6
51 *	MECHANICAL SEAL	107420118751	S-S-FKM-316-630	1	69	HEX HD CAPSCREW	101001120114	Q235	6
52	O-RING	131000340571	NBR	1	70	INBOARD BALL BRG	106020053100	NA	1
53	SEAL PLATE	303212000006A	HT250	1	71 *	IMPELLER SHAFT	305211000006Q	4140	1
54 *	GASKET, SEAL PLATE	118200100312	ARAMID FIBERS	1	72 *	SHAFT KEY	110011038312	304SS	1
55 *	OIL SEAL	109020076120	NBR	1	73 *	OUTBOARD BALL BRG	106020053110	NA	1
56 *	OIL SEAL	109020076120	NBR	1	74	BRG SNAP RING	112040000055	65Mn	1
57 *	O-RING	131000340570	NBR	1	75 *	O-RING	131000130355	NBR	1
58	SOCKET HD CAPSCREW	105501000014	Q235	1	76	BRG COVER, INBOARD	341200008106A	HT250	1
59	LOCKWASHER	111011100058	304SS	4	77 *	OIL SEAL	109020076120	NBR	1
60	HEX HD CAPSCREW	101011508134	304SS	4	78	LOCKWASHER	111010100038	Q235	6
61	PIPE PLUG	105401000014	Q235	2	79	HEX HD CAPSCREW	101001380114	Q235	6

*INDICATES PARTS RECOMMENDED FOR STOCK.

IF YOUR PUMP IS NOT A STANDARD PRODUCTION MODEL. CONTACT THE M&C PUMPS CO.,LTD TO VERIFY PART NUMBERS.