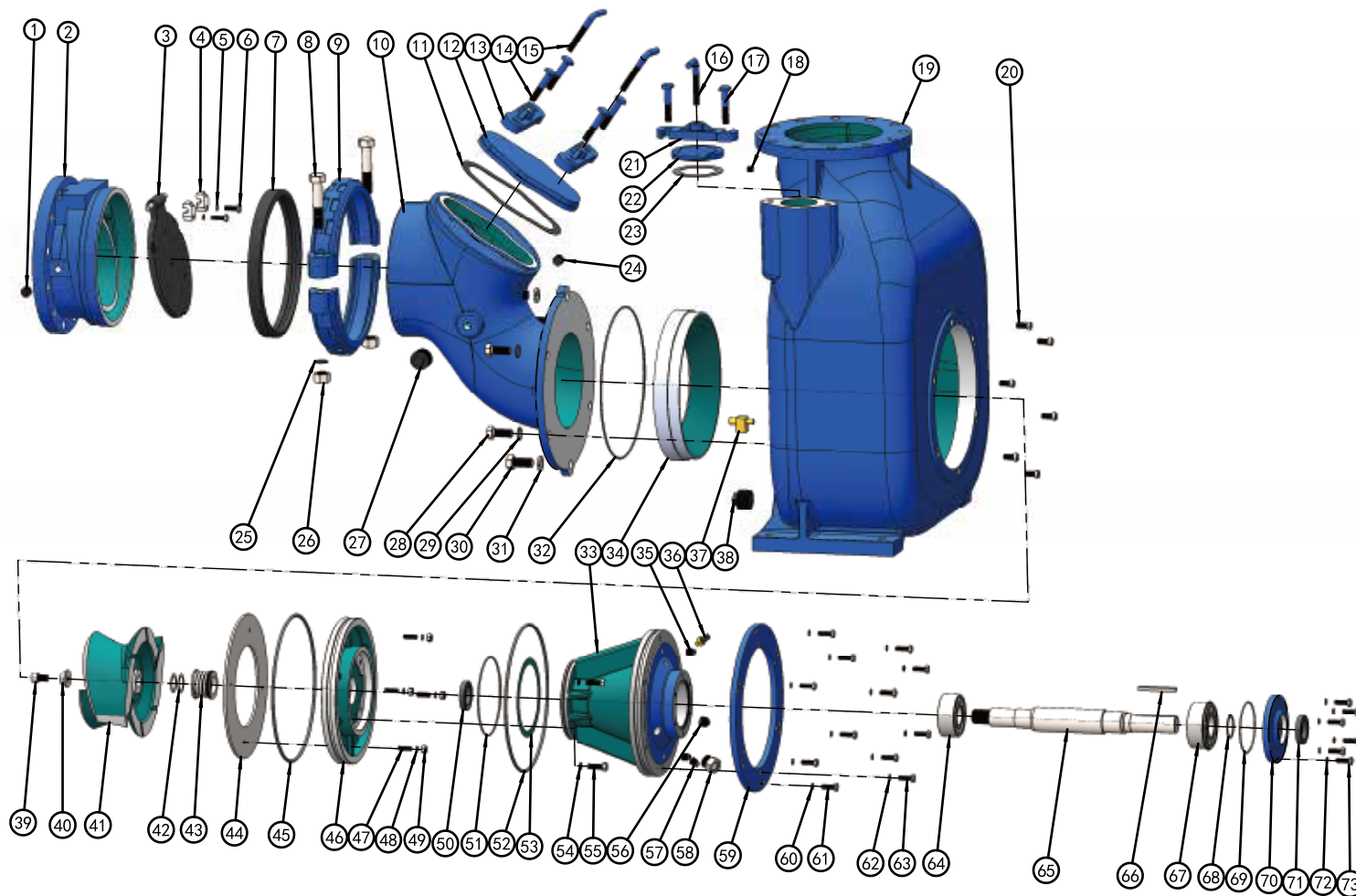


▲ MCT-10  
90° SECTIONAL VIEW



## PARTS LIST PUMP MODEL MCT 10"

ITEM NO.	PART NAME	PART NUMBER	MAT'L	QTY.	ITEM NO.	PART NAME	PART NUMBER	MAT'L	QTY.
1	PIPE PLUG	105101000012	Q235	1	19	PUMP CASING	301201000010A	HT250	1
2	SUCTION FLANGE	347200000010A	HT250	1	20	SOCKET HD CAPSCREW	10111121100	304SS	6
3	* CHECK VALVE	118201210320	NBR	1	21	CLAMP BAR	345200300000B	QT450-10	1
4	* PIVOT CAP	344200000010A	HT250	2	22	FILL COVER PLATE	345200200000B	QT450-10	1
5	* LOCKWASHER	111010100038	Q235	2	23	* GSKT, FILL CVR PLATE	118201110127	NBR	1
6	* HEX HD CAPSCREW	101001380112	Q235	2	24	PIPE PLUG	105101000114	Q235	1
7	CPLG RING	188200600010	RUBBER	1	25	LOCKWASHER	111010100034	Q235	2
8	HEX HD CAPSCREW	101001340512	Q235	2	26	HEX NUT	103001000034	Q235	2
9	SHOULDER TYPE CPLG	345200400010B	QT450-10	2	27	PIPE PLUG	105101000114	Q235	1
10	SUCTION ELBOW	345200500010A	HT250	1	28	HEX HD CAPSCREW	101001340158	Q235	4
11	* GSKT, CLEAN OUT CVR	118201500314	RUBBER	1	29	LOCKWASHER	111010100034	Q235	4
12	CLEAN OUT COVER	345200900010A	HT250	1	30	HEX HD CAPSCREW	101001780200	Q235	2
13	CLAMP BAR	345200300000B	QT450-10	2	31	LOCKWASHER	111010100708	Q235	2
14	MACHINE BOLT	101380058003	Q235	4	32	* O-RING	131000390500	NBR	1
15	CLAMP BAR SCREW	188200100000C	WCB	2	34	* WEAR PLATE ASSY	338200000010B	QT450-10	1
16	CLAMP BAR SCREW	188200100000C	WCB	1	37	* PRESS RELIEF VALVE	188200300012N	BRASS	1
17	MACHINE BOLT	101380058003	Q235	2	38	PIPE PLUG	105101000114	Q235	1
18	PIPE PLUG	105401000014	Q235	1					

## PARTS LIST \*ROTATING ASSEMBLY

ITEM NO.	PART NAME	PART NUMBER	MAT'L	QTY.	ITEM NO.	PART NAME	PART NUMBER	MAT'L	QTY.
33	BRG HOUSING	304200000010A	HT250	1	55	HEX HD CAPSCREW	101002120134	304SS	4
35	PIPE PLUG	105101000013	Q235	1	56	PIPE PLUG	105101100034	Q235	1
36	AIR VENT PLUG	199000000052	BRASS	1	57	PIPE PLUG	105101000012	Q235	2
39	* SOCKET HD CAPSCREW	101111580001	304SS	1	58	SIGHT GAUGE	114200000003	304SS	1
40	* IMPELLER NUT	111203000061	304SS	1	59	ASSEMBLY PLATE	3452006008100	Q235	1
41	* IMPELLER	302202000010B	QT450-10	1	60	LOCKWASHER	111010100012	Q235	6
42	* IMPELLER ADJ SHIM SET	188200400505D	304SS	7	61	HEX HD CAPSCREW	101001120112	Q235	6
43	* MECHANICAL SEAL	107420118752	S-S-FKM-316	1	62	LOCKWASHER	111010100012	Q235	6
44	* WEAR PLATE ASSY, SEAL PLATE	3382010000100	Q235	1	63	HEX HD CAPSCREW	101001120112	Q235	6
45	* O-RING	131000360700	NBR	1	64	* INBOARD BALL BRG	106020053100	NSK	1
46	SEAL PLATE	303202000010A	HT250	1	65	* SHAFT	305200100010Q	4140	1
47	STUD	102201380114	304SS	4	66	* SHAFT KEY	110011038400	304SS	1
48	LOCKWASHER	111011100038	304SS	4	67	* OUTBOARD BALL BRG	106020053110	NSK	1
49	HEX NUT	103011000038	304SS	4	68	RETAINING RING	112040000055	65Mn	1
50	* OIL SEAL	109020076120	NBR	1	69	* O-RING	131000130355	NBR	1
51	* O-RING	131000195355	NBR	1	70	* BRG COVER, INBOARD	341200008106A	HT250	1
52	* O-RING	131000360700	NBR	1	71	* OIL SEAL	109020076120	NBR	1
53	* GSKT, SEAL PLATE	118200100206	ARAMID FIBERS	1	72	LOCKWASHER	111010100038	Q235	6
54	LOCKWASHER	111011000012	304SS	4	73	HEX HD CAPSCREW	101001380114	Q235	6

\*INDICATES PARTS RECOMMENDED FOR STOCK.

IF YOUR PUMP IS NOT A STANDARD PRODUCTION MODEL, CONTACT THE M&C PUMPS CO.,LTD TO VERIFY PART NUMBERS.