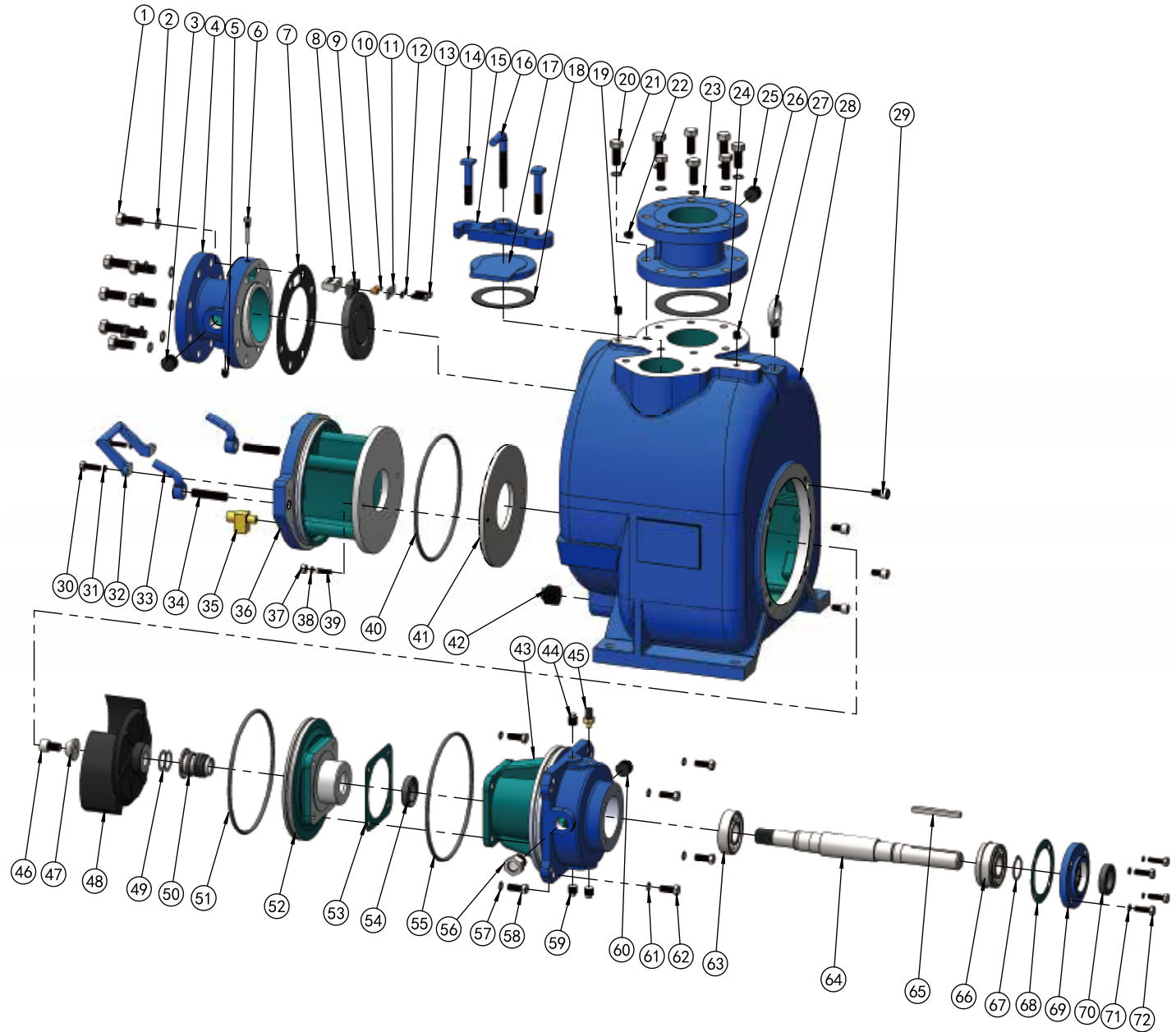


▲ MCT-4  
90° SECTIONAL VIEW



## PARTS LIST PUMP MODEL MCT 4"

ITEM NO.	PART NAME	PART NUMBER	MAT'L	QTY.	ITEM NO.	PART NAME	PART NUMBER	MAT'L	QTY.
1	HEX HD CAPSCREW	101001508002	Q235	8	22	PIPE PLUG	105401000014	Q235	1
2	LOCKWASHER	111010100058	Q235	8	23	DISCH FLANGE	348200000004A	HT250	1
3	PIPE PLUG	105101000001	Q235	1	24 *	GSKT, DISCH FLANGE	118200610155	NBR	1
4	SUCTION FLANGE	347200000004A	HT250	1	25	PIPE PLUG	105101000001	Q235	1
5	PIPE PLUG	105401000014	Q235	1	26	PIPE PLUG	105501000014	Q235	1
6 *	CHECK VALVE PIN	101410042018	304SS	1	27	LIFTING BOLT	104500000016	Q235	1
7 *	GSKT, SUCTION FLANGE	118200510225	NBR	1	28	PUMP CASING	301200000004A	HT250	1
8 *	PIVOT CAP	344200000004D	304SS	1	29	SOCKET HD CAPSCREW	101111121100	304SS	4
9 *	CHECK VALVE	118201210166	NBR	1	30	HEX HD CAPSCREW	101001380001	Q235	2
10 *	BRONZE PIPE	188200200010N	BRONZE	2	31	LOCKWASHER	111010100038	Q235	2
11 *	WASHER, PIVOT CAP	118201400139	304SS	1	32	CVR PLATE HANDLE	313210003468C	WCB	1
12 *	LOCKWASHER	111011000008	304SS	2	33	HAND NUT	312200000058C	WCB	2
13 *	HEX HD CAPSCREW	101010008030	304SS	2	34	STUD	102001508300	Q235	2
14	MACHINE BOLT	101380058003	Q235	2	35 *	PRESS RELIEF VALVE	188200300012N	BRASS	1
15	CLAMP BAR	345200300000B	QT450-10	1	36	COVER PLATE	339200000004A	HT250	1
16	CLAMP BAR SCREW	188200100000C	WCB	1	37	HEX NUT	103011000038	304SS	2
17	FILL COVER PLATE	345200200000B	QT450-10	1	38	LOCKWASHER	111011100038	304SS	2
18 *	GSKT, FILL CVR PLATE	118201110127	NBR	1	39	STUD	102011380158	304SS	2
19	PIPE PLUG	105501000014	Q235	1	40 *	O-RING	131000252070	NBR	1
20	HEX HD CAPSCREW	101001508002	Q235	8	41 *	WEAR PLATE ASSY	338200000004O	Q235	1
21	LOCKWASHER	111010100058	Q235	8	42	PIPE PLUG	105101000114	Q235	1

## PARTS LIST \*ROTATING ASSEMBLY

ITEM NO.	PART NAME	PART NUMBER	MAT'L	QTY.	ITEM NO.	PART NAME	PART NUMBER	MAT'L	QTY.
43	BRG HOUSING	304200000004A	HT250	1	58	HEX HD CAPSCREW	101011120114	304SS	4
44	PIPE PLUG	105101000013	Q235	1	59	PIPE PLUG	105101000012	Q235	2
45	AIR VENT PLUG	199000000052	BRASS	1	60	PIPE PLUG	105101100034	Q235	1
46 *	SOCKET HD CAPSCREW	101111580001	304SS	1	61	LOCKWASHER	111010100012	Q235	4
47 *	IMPELLER WASHER	111203000061	304SS	1	62	HEX HD CAPSCREW	101001120112	Q235	4
48 *	IMPELLER	302202000004B	QT450-10	1	63 *	INBOARD BALL BRG	106020063080	NA	1
49 *	IMPELLER ADJ SHIM SET	188200400445D	304SS	7	64 *	SHAFT	305200000046Q	4140	1
50 *	MECHANICAL SEAL	107420115001	S-S-FKM-316-630	1	65 *	SHAFT KEY	110011038400	304SS	1
51 *	O-RING	131000248035	NBR	1	66 *	OUTBOARD BALL BRG	106020053086	NA	1
52	SEAL PLATE	303202000004A	HT250	1	67	RETAINING RING	112040000040	65Mn	1
53 *	GSKT, SEAL PLATE	118200100151	ARAMID FIBERS	1	68 *	GSKT, BRG COVER	118201000136	ARAMID FIBERS	1
54 *	OIL SEAL	109010040013	NBR	1	69	BRG COVER, INBOARD	341200004634A	HT250	1
55 *	O-RING	131000252070	NBR	1	70 *	OIL SEAL	109010040013	NBR	1
56	SIGHT GAUGE	114200000003	304SS	1	71	LOCKWASHER	111010100038	Q235	4
57	LOCKWASHER	111011100012	304SS	4	72	HEX HD CAPSCREW	101001380114	Q235	4

\*INDICATES PARTS RECOMMENDED FOR STOCK.

IF YOUR PUMP IS NOT A STANDARD PRODUCTION MODEL. CONTACT THE M&C PUMPS CO.,LTD TO VERIFY PART NUMBERS.