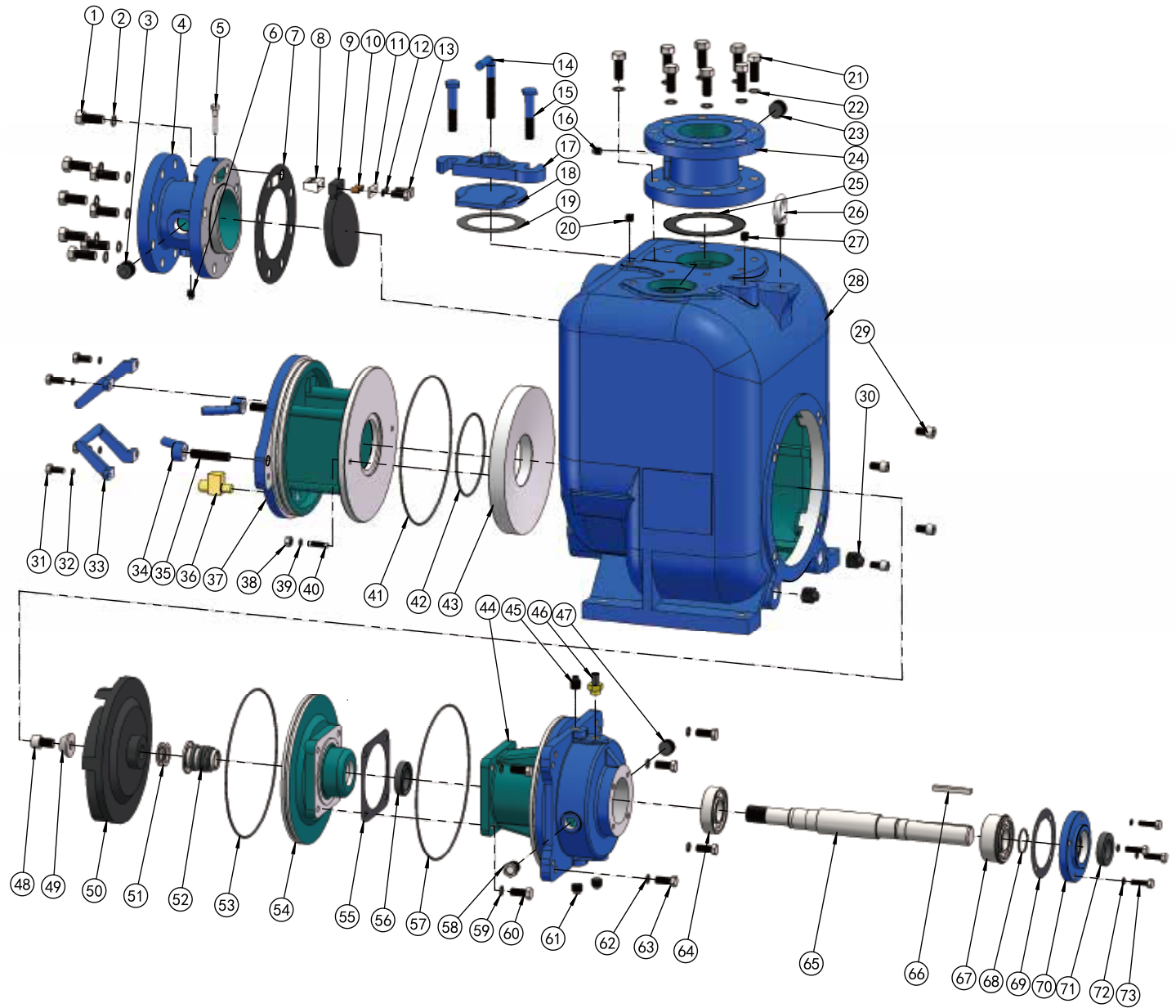


▲ MCU-4  
90° SECTIONAL VIEW



## PARTS LIST PUMP MODEL MCU 4"

ITEM NO.	PART NAME	PART NUMBER	MAT'L	QTY.	ITEM NO.	PART NAME	PART NUMBER	MAT'L	QTY.
1	HEX HD CAPSCREW	101001508002	Q235	8	23	PIPE PLUG	105101000001	Q235	1
2	LOCKWASHER	111010100058	Q235	8	24	DISCH FLANGE	348200000004A	HT250	1
3	PIPE PLUG	105101000001	Q235	1	25 *	GSKT, DISCH FLANGE	118200610155	NBR	1
4	SUCTION FLANGE	347200000004A	HT250	1	26	LIFTING BOLT	104500000016	Q235	1
5 *	CHECK VALVE PIN	101410042018	304SS	1	27	PIPE PLUG	105501000014	Q235	1
6	PIPE PLUG	105401000014	Q235	1	28	PUMP CASING	301210000004A	HT250	1
7 *	GSKT, SUCTION FLANGE	118200510225	NBR	1	29 *	SOCKET HD CAPSCREW	101111211100	304SS	4
8 *	PIVOT CAP	344200000004D	304SS	1	30	PIPE PLUG	105101000001	Q235	2
9 *	CHECK VALVE	118201400139	NBR	1	31	HEX HD CAPSCREW	101001380001	Q235	4
10	BRONZE PIPE	188200200010N	BRONZE	2	32	LOCKWASHER	111010100038	Q235	4
11 *	GSKT, PIVOT CAP	118201400139	NBR	1	33	CVR PLATE HANDLE	313210003468C	WCB	2
12 *	LOCKWASHER	111011000008	304SS	2	34	HAND NUT	312200000058C	WCB	2
13 *	HEX HD CAPSCREW	101010008030	304SS	2	35	STUD	102001508300	Q235	2
14	CLAMP BAR SCREW	188200100000C	WCB	1	36 *	PRESS RELIEF VALVE	188200300012N	BRASS	1
15	MACHINE BOLT	101380058003	Q235	2	37	COVER PLATE	339210000004A	HT250	1
16	PIPE PLUG	105401000014	Q235	1	38	HEX NUT	103011000038	304SS	2
17	CLAMP BAR	345200300000B	QT450-10	1	39	LOCKWASHER	111011100038	304SS	2
18	FILL COVER PLATE	345200200000B	QT450-10	1	40	STUD	102011380158	304SS	2
19 *	GSKT, FILL CVR PLATE	118201110127	NBR	1	41 *	O-RING	131000290355	NBR	1
20	PIPE PLUG	105501000014	Q235	1	42 *	O-RING	131000150355	NBR	1
21	HEX HD CAPSCREW	101001508002	Q235	8	43 *	WEAR PLATE ASSY	338210000004B	QT450-10	1
22	LOCKWASHER	111010100058	Q235	8					

## PARTS LIST \*ROTATING ASSEMBLY

ITEM NO.	PART NAME	PART NUMBER	MAT'L	QTY.	ITEM NO.	PART NAME	PART NUMBER	MAT'L	QTY.
44	BRG HOUSING	304210000034A	HT250	1	59	LOCKWASHER	111011100012	304SS	4
45	PIPE PLUG	105101000013	Q235	1	60	HEX HD CAPSCREW	10101120114	304SS	4
46	AIR VENT PLUG	199000000052	BRASS	1	61	PIPE PLUG	105101000012	Q235	2
47	PIPE PLUG	105101100034	Q235	1	62	LOCKWASHER	111010100012	Q235	4
48	SOCKET HD CAPSCREW	101111580001	304SS	1	63	HEX HD CAPSCREW	101001120112	Q235	4
49 *	IMPELLER WASHER	111203000061	304SS	1	64 *	INBOARD BALL BRG	106020063080	NA	1
50 *	IMPELLER	302212000004B	QT450-10	1	65 *	SHAFT	305200000046Q	4140	1
51 *	IMPELLER ADJ SHIM SET	188200400445D	304SS	7	66 *	SHAFT KEY	110011038300	304SS	1
52 *	MECHANICAL SEAL	107420115001	S-S-FKM-316-630	1	67 *	OUTBOARD BALL BRG	106020053086	NA	1
53	O-RING	131000280355	NBR	1	68	RETAINING RING	112040000040	65Mn	1
54	SEAL PLATE	303212000004A	HT250	1	69 *	GSKT, BRG COVER	118201000136	ARAMID FIBERS	1
55 *	GSKT, SEAL PLATE	118200100151	ARAMID FIBERS	1	70	BRG COVER, INBOARD	341200004634A	HT250	1
56 *	OIL SEAL	109010040013	NBR	1	71 *	OIL SEAL	109010040013	NBR	1
57 *	O-RING	131000290355	NBR	1	72	LOCKWASHER	111010100038	Q235	4
58	SIGHT GAUGE	114200000003	304SS	1	73	HEX HD CAPSCREW	101001380114	Q235	4

\*INDICATES PARTS RECOMMENDED FOR STOCK.

IF YOUR PUMP IS NOT A STANDARD PRODUCTION MODEL, CONTACT THE M&C PUMPS CO.,LTD TO VERIFY PART NUMBERS.